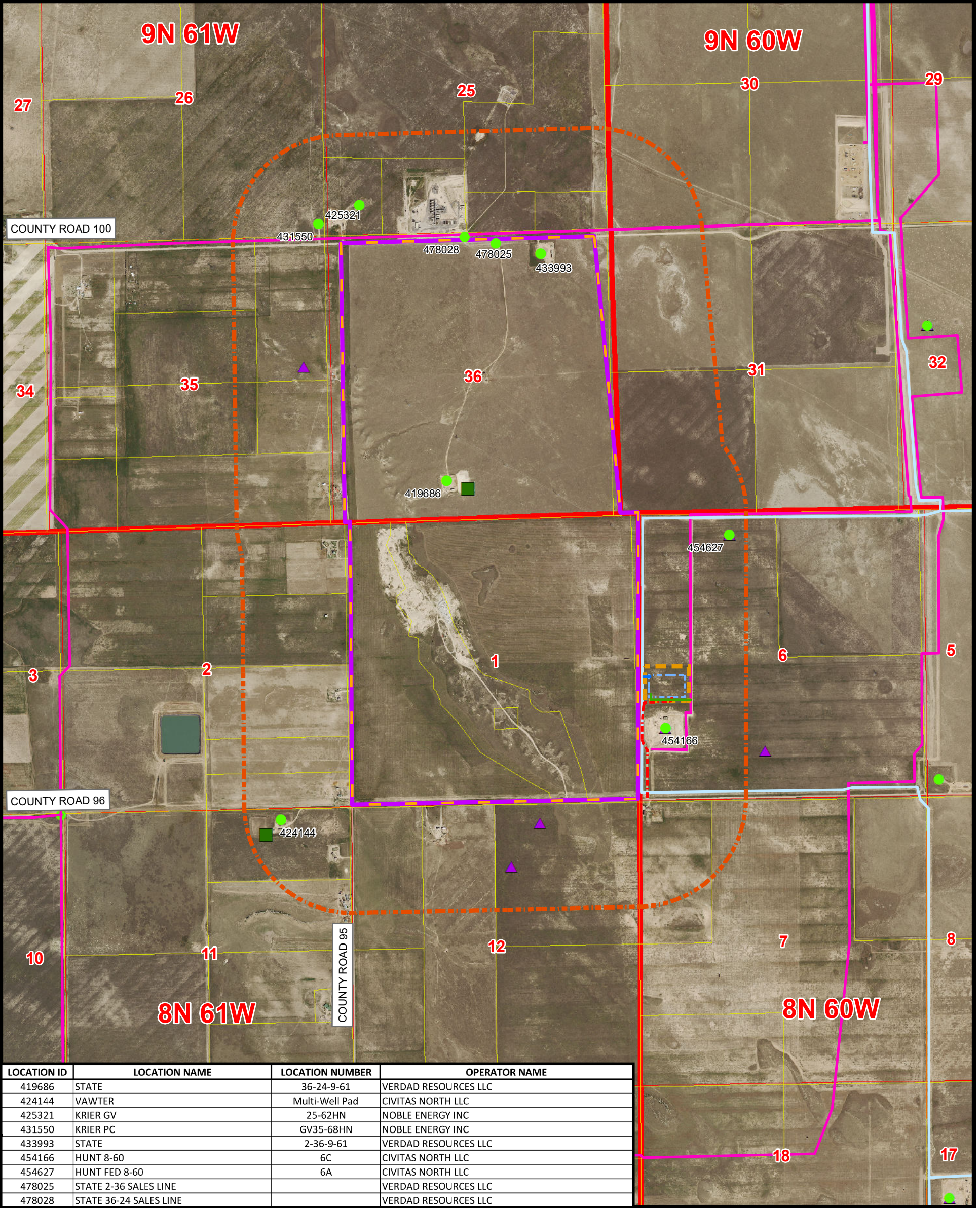


RELATED LOCATION & FLOWLINE MAP

HORNET 0136

SECTION 6, TOWNSHIP 8 NORTH, RANGE 60 WEST, 6TH P.M., WELD COUNTY, COLORADO



LOCATION ID	LOCATION NAME	LOCATION NUMBER	OPERATOR NAME
419686	STATE	36-24-9-61	VERDAD RESOURCES LLC
424144	VAWTER	Multi-Well Pad	CIVITAS NORTH LLC
425321	KRIER GV	25-62HN	NOBLE ENERGY INC
431550	KRIER PC	GV35-68HN	NOBLE ENERGY INC
433993	STATE	2-36-9-61	VERDAD RESOURCES LLC
454166	HUNT 8-60	6C	CIVITAS NORTH LLC
454627	HUNT FED 8-60	6A	CIVITAS NORTH LLC
478025	STATE 2-36 SALES LINE		VERDAD RESOURCES LLC
478028	STATE 36-24 SALES LINE		VERDAD RESOURCES LLC

Legend	
	PROPOSED WORKING PAD SURFACE
	PROPOSED OGDG BOUNDARY
	PROPOSED MINERAL BOUNDARY
	2000' BUFFER - PROPOSED OGDG BOUNDARY
	PROPOSED ACCESS ROAD
	EXISTING GAS PIPELINE
	EXISTING OIL & WATER PIPELINE
	PROPOSED GAS PIPELINE
	PROPOSED OIL & WATER PIPELINE
	PARCEL BOUNDARY
	WELD OIL AND GAS LOCATION ASSESSMENT (WOGLA)
	PENDING WELL PERMIT (FORM 2)
	APPROVED WELL PERMIT (FORM 2)
	PENDING LOCATION PERMIT (FORM 2A)
	ACTIVE LOCATION
	APPROVED LOCATION PERMIT (FORM 2A)
	VISIBLE LOCATION ON AERIAL NOT IN COGCC GIS
	CLOSED PIT
	TANK BATTERY

NOTE: THIS MAP IS A COMPILATION OF PUBLICLY AVAILABLE DATA. THE ACCURACY AND COMPLETENESS OF SAID DATA HAS NOT BEEN VERIFIED BY 609 CONSULTING, LLC. EXISTING CONDITIONS MAY DIFFER FROM WHAT IS SHOWN.



VERDAD RESOURCES

1125 17th Street, Suite 550
Denver, Colorado 80202



609 Consulting, LLC

LOVELAND OFFICE
6706 North Franklin Avenue
Loveland, Colorado 80538
Phone 970-776-4331

SHERIDAN OFFICE
1095 Saberton Avenue
Sheridan, Wyoming 82801
Phone 307-674-0609



N

Drawn by: AK
Revised:

Date: 19 Apr 2024
Date:

NAD83 CO-Nft
Scale: 1" = 1,800ft

K:\VERDAD\2023_145_HUNT_T8N_R60W_SEC_6\GIS\FORM 2A\HORNET_MAP\FLOWLINE_MAP.mxd 4/19/2024 5:01:12 PM