

SPRINGDALE UNIT BANNEY STATE #16-15

API # 075-09269

Loc. # 312304

FIELD NAME SPRINGDALE - #78300

Spud Date 6/12/1993

Basin DENVER - JULESBURG

Location SWSE 16 8N 53W 6

Elevation GL (ft) 4173

Elevation KB (ft) 4183

TD (ft) 5003

PBTD (ft) 4983

Formation Tops

Base of Upper Pierre - 1390'

No SUSSEX Fm Production w/in 1 mi.
No SHANNON Fm Production w/in 1 mi.

NIOBRARA - 3996'

per Geologic Report doc #210859

FORT HAYS - 4304'

CARLILE - 4316'

GREENHORN - 4520'

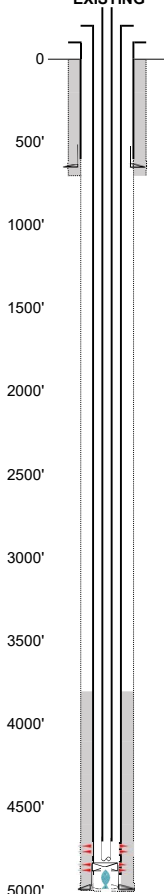
D SAND - 4766'

HUNTSMAN - 4792'

J SAND - 4866'

SCULL CREEK - 4963'

EXISTING



Existing Casing and Cement Coverage

SURF: Size: 8.625", Hole Size: 12.25 in.

Depth: 665 ft., Weight: 24

Cement: 350 sx, Top: 0 ft., Method: Vis

Deepest DWR w/in 1 mi. = 614'

Base of Upper Pierre - 1390'

1ST, Size: 5.5", Hole Size: 7.875"
Depth: 5003', Weight: 15.5
Cement: 235 sx, TOC: 3800', Method: CBL

2-7/8" tubing set at 4827'

TOC = 3800' (CBL)

D Sand Perfs 4766' - 4770' (sqz'd per doc #1131460)

J Sand Perfs 4861' - 4878'

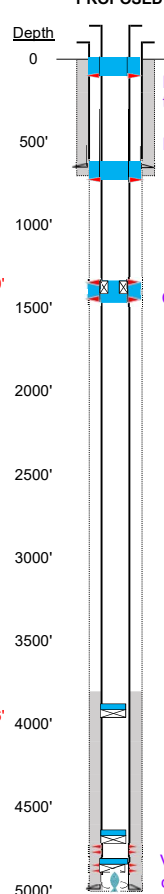
CIBP @ 4880' (per doc #1131460)

Top of Fish @ 4893'

PBTD (ft) 4983'

TD (ft) 5003'

PROPOSED



Plug Placement

Perf at 100', pump 35 sx through perfs to surface.

Perf at 715', pump 20 sx through perfs. Leave 15 sx inside. Tag above 615' reqd.

Perf at 1440' & 1340' CIBP @ 1350', pump 40 sx through perfs. Leave 10 sx on top.

CBL Required
VERIFY TOC w/ CBL

CIBP w/ 3 sx @ 3921' (75' above NBRR).

Pressure test casing after setting CIBP.

CIBP w/ 3 sx @ 4691' (75' above top perf).

Verify CIBP depth before dumping 3 sx on existing plug @ 4880'