

SPRINGDALE PARTNERS LLC - 10487
SPRINGDALE UNIT BANAY STATE #16-11
API # 075-09256 Loc. # 312298

Prepared DTA 4/5/2024
QC MHH

FIELD NAME SPRINGDALE - #78300
Spud Date 7/22/1993
Basin DENVER - JULESBURG
Location SENW 16 8N 53W 6
Elevation GL (ft) 4173
Elevation KB (ft) 4183
TD (ft) 5006
PBTD (ft) 4979
Formation Tops

Base of Upper Pierre - 1425'

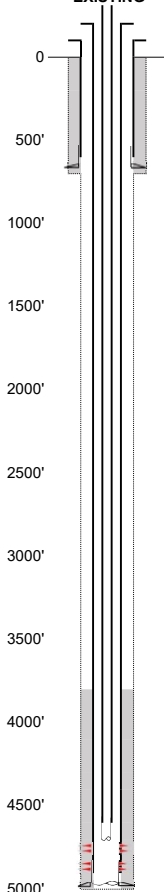
No SUSSEX Fm Production w/in 1 mi.
No SHANNON Fm Production w/in 1 mi.

NIOBRARA - 3946'
in Geologic Report doc #210826

FORT HAYS - 4272'
CARLILE - 4321'

GREENHORN - 4529'
D SAND - 4773'
HUNTSMAN - 4779'
J SAND - 4878'
SCULL CREEK - 4952'

EXISTING



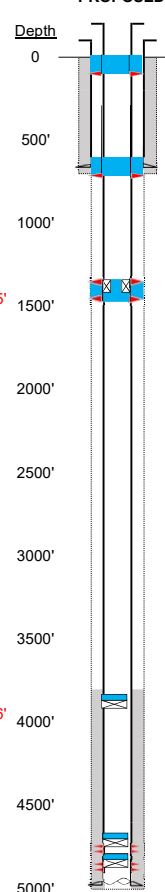
Existing Casing and Cement Coverage
SURF: Size: 8.625", Hole Size: 12.25 in.
Depth: 664 ft., Weight: 24
Cement: 370 sx, Top: 0 ft., Method: Vis

Deepest DWR w/in 1 mi. = 614'

1ST. Size: 5.5", Hole Size: 7.875"
Depth: 5000' (per doc #1131467), Weight: 15.5
Cement: 235 sx, TOC: 3750', Method: CBL

2-7/8" tubing set at 4892'
TOC = 3750' (CBL)
D Sand Perfs 4774' - 4778' (sqz'd per doc #1131467)
J Sand Perfs 4880' - 4892'
PBTD (ft) 4979'
TD (ft) 5002'

PROPOSED



Plug Placement

Perf at 100', pump 35 sx through perfs to surface.

Perf at 714', pump 20 sx through perfs. Leave 15 sx inside. Tag above 614' reqd.

Perf at 1475' & 1375' CICR @ 1385', pump 40 sx through perfs. Leave 10 sx on top.

CBL Required
VERIFY TOC w/ CBL

CIBP w/ 3 sx @ 3871' (75' above NBRR).

CIBP w/ 3 sx @ 4699' (75' above top perf).

Pressure test casing after setting CIBP.

CIBP w/ 3 sx @ 4805' (75' above top JSND perf).