

SPRINGDALE #9

API # 075-09256

Loc. # 312298

FIELD NAME SPRINGDALE - #78300

Spud Date 7/22/1993

Basin DENVER - JULESBURG

Location SENW 16 8N 53W 6

Elevation GL (ft) 4173

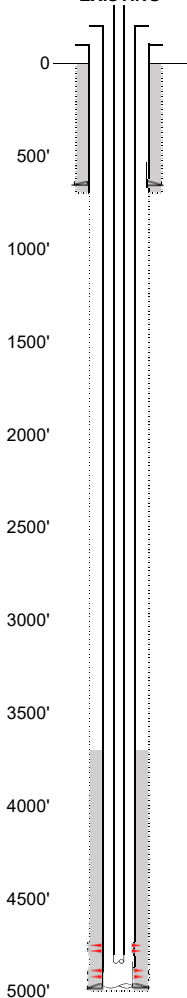
Elevation KB (ft) 4183

TD (ft) 5006

PBTD (ft) 4979

Formation Tops

EXISTING



Existing Casing and Cement Coverage

SURF: Size: 8.625", Hole Size: 12.25 in.
Depth: 657 ft., Weight: 24
Cement: 450 sx, Top: 0 ft., Method: Vis

Deepest DWR w/in 1 mi. = 614'

Base of Upper Pierre - 1350'

1ST, Size: 5.5", Hole Size: 7.875"
Depth: 5000', Weight: 15.5
Cement: 135 sx, TOC: 3710', Method: CBL

Base of Upper Pierre - 1350'

No SUSSEX Fm Production w/in 1 mi.
No SHANNON Fm Production w/in 1 mi.

From offset Springdale Storage #3 (075-05807)
NIOBRARA - 3947'

GREENHORN - 4540'

D SAND - 4748'

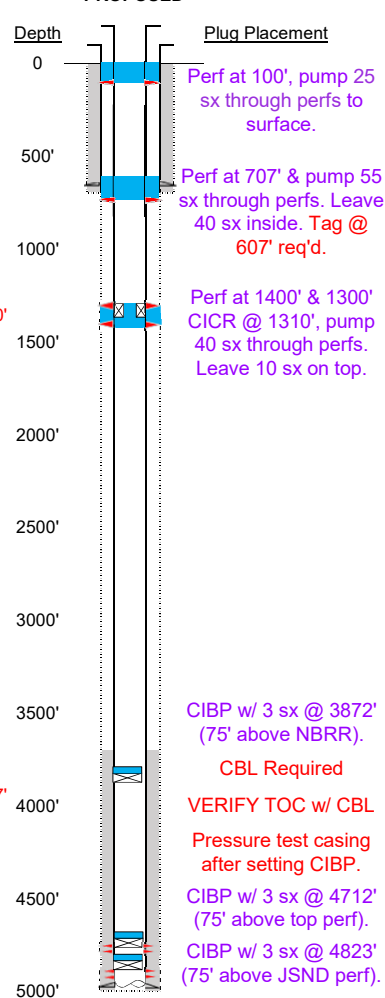
HUNTSMAN - 4820'

J SAND - 4890'

SCULL CREEK - 4982'

2-3/8" tubing set at 4850'
TOC = 3710' (CBL)
D Sand Perfs 4787' - 4802' sqz'd doc #210736
J Sand Perfs 4898' - 4914'
PBTD (ft) 4979'
TD (ft) 5006'

PROPOSED



Plug Placement

Perf at 100', pump 25
sx through perfs to
surface.

Perf at 707' & pump 55
sx through perfs. Leave
40 sx inside. Tag @
607' req'd.

Perf at 1400' & 1300'
CICR @ 1310', pump
40 sx through perfs.
Leave 10 sx on top.

CIBP w/ 3 sx @ 3872'
(75' above NBRR).

CBL Required

VERIFY TOC w/ CBL

Pressure test casing
after setting CIBP.

CIBP w/ 3 sx @ 4712'
(75' above top perf).

CIBP w/ 3 sx @ 4823'
(75' above JSND perf).