

SPRINGDALE #7

API # 075-09254

Loc. # 312297

FIELD NAME SPRINGDALE - #78300

Spud Date 1/25/1993

Basin DENVER - JULESBURG

Location SWNE 16 8N 53W 6

Elevation GL (ft) 4165

Elevation KB (ft) 4175

TD (ft) 5014

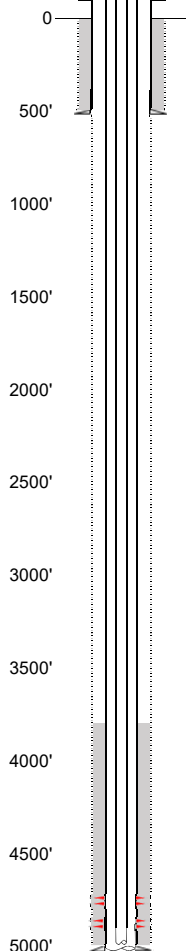
PBTD (ft) 4966

Formation Tops

Prepared DTA 4/5/2024

QC MHH

EXISTING



Base of Upper Pierre - 1380'

No SUSSEX Fm Production w/in 1 mi.
No SHANNON Fm Production w/in 1 mi.

NIOBRARA - 3942'

reported in Geological Report doc# 210746

GREENHORN - 4527'

D SAND - 4770'

HUNTSMAN SHALE - 4793'

J SAND - 4868'

SCULL CREEK - 4976'

Existing Casing and Cement Coverage

SURF: Size: 8.625", Hole Size: 12.25 in.

Depth: 516 ft., Weight: 23

Cement: 290 sx, Top: 0 ft., Method: Vis

Deepest DWR w/in 1 mi. = 582'

Base of Upper Pierre - 1380'

1ST, Size: 5.5", Hole Size: 7.875"

Depth: 5003', Weight: 15.5

Cement: 235 sx, TOC: 3832', Method: CBL

NBRR CICR is slightly above max (100') due to poor
cement quality (doc #210748)

NIOBRARA - 3942'

2-3/8" tubing UNK

TOC = 3832' (CBL)

D Sand Perfs 4772' - 4776' (sqz'd doc #210740)

J Sand Perfs 4875' - 4894'

PBTD (ft) 4966'

TD (ft) 5014'

PROPOSED

Plug Placement



Perf at 100', pump 35 sx
through perfs to surface.

Perf at 632', pump 35 sx
through perfs. Leave 25
sx inside. Tag above
466' reqd.

Perf at 1430' & 1330'
CICR @ 1340', pump 40
sx through perfs. Leave
10 sx on top.

Perf at 3790' & 3690'
CICR @ 3700', pump 40
sx through perfs. Leave
10 sx on top.

CBL Required

VERIFY TOC w/ CBL

Pressure test casing
after setting CIBP.

CIBP w/ 3 sx @ 4703'
(75' above top perfs).

CIBP w/ 3 sx @ 4800'
(75' above JSND perfs).