

KT Resources LLC
An Hill Unit 30-42
Location ID: 316154



Well name incorrect



Weeds



**KT Resources LLC
An Hill Unit 30-42
Location ID: 316154**



Erosion and sediment migration

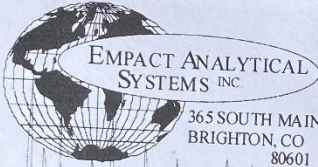


Erosion and sediment migration

KT Resources LLC
An Hill Unit 30-42
Location ID: 316154

Jul 30, 2024 at 4:38:45 PM

Ful. 6002 No Blanco Rec 503

 **EMPACT ANALYTICAL SYSTEMS INC.**
365 SOUTH MAIN
BRIGHTON, CO 80601
303-637-0150 www.empactanalytical.com

Meter S/N
15113460
D-374934A

Station Name Ant Hill Unit 30-42
Station No. 120275546 Producer 310P
Sec 30 Township 2N Range 96W
Diff 250" Temp Range 0-50° Tube Size 2.068
Static 200# Absolute 11.82 psig

	Date	Orifice Plate Size	Meter Test Date	Sample Date
GM	3-6-18	0.625 ✓	3-6-18	3-6-18
KB	2-26-19	1625	2-26-19	3-18-19



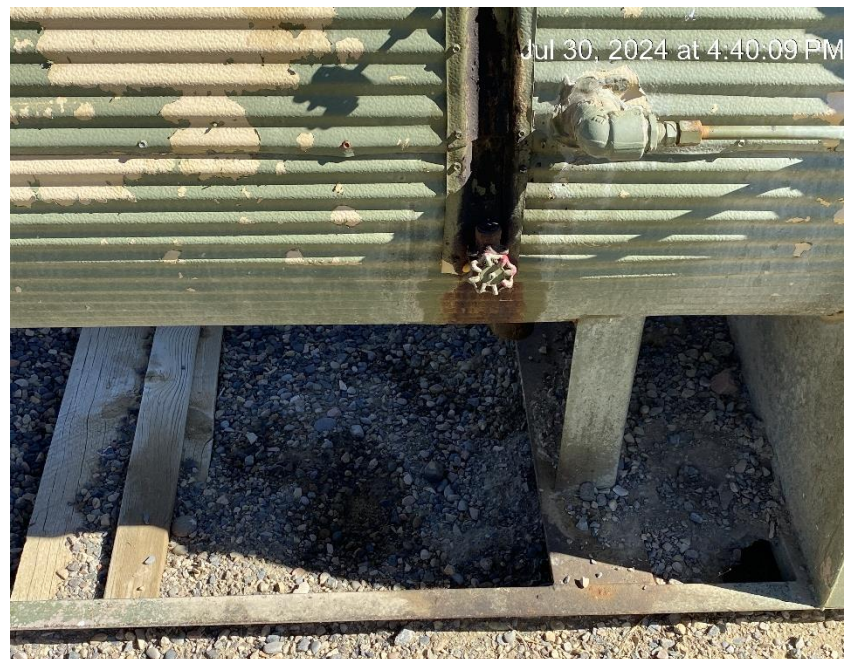
Calibration overdue

Erosion and sediment migration

**KT Resources LLC
An Hill Unit 30-42
Location ID: 316154**



Oily waste and stained soil



Stained soil

**KT Resources LLC
An Hill Unit 30-42
Location ID: 316154**



Erosion and sediment migration



Debris

**KT Resources LLC
An Hill Unit 30-42
Location ID: 316154**



No chemical labels



Oily waste on top of containment

**KT Resources LLC
An Hill Unit 30-42
Location ID: 316154**



Containment is full. No freeboard.



When replaced additional information is required

**KT Resources LLC
An Hill Unit 30-42
Location ID: 316154**



Weeds



Equipment leakage and stained soil

**KT Resources LLC
An Hill Unit 30-42
Location ID: 316154**

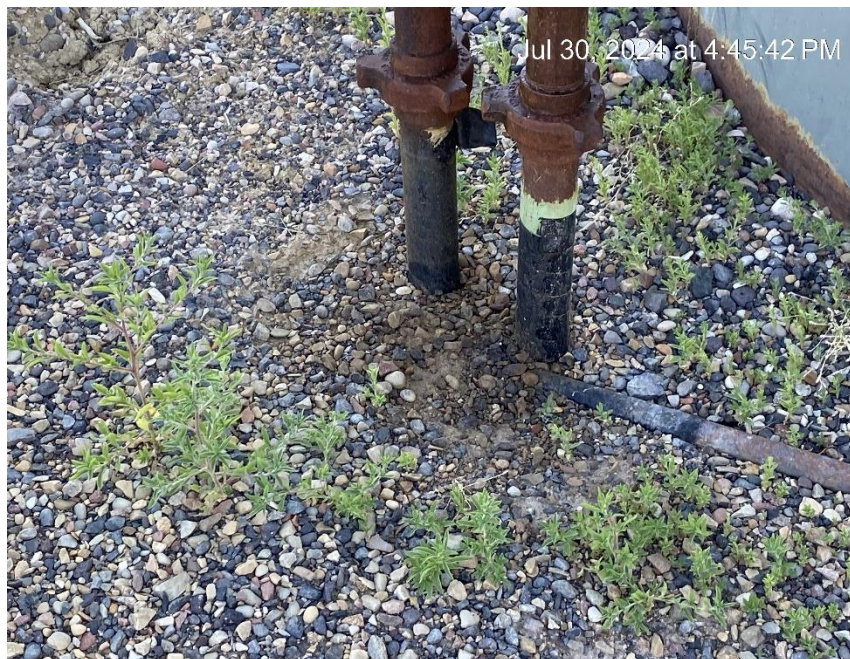


Damaged tank containment



Damaged tank containment with hole

KT Resources LLC
An Hill Unit 30-42
Location ID: 316154



Stained soil



Stained soil

KT Resources LLC
An Hill Unit 30-42
Location ID: 316154



Tank battery signage



Repair or replace damaged labels

**KT Resources LLC
An Hill Unit 30-42
Location ID: 316154**



Location from Southwest corner



Location from Southeast corner

**KT Resources LLC
An Hill Unit 30-42
Location ID: 316154**



Location from Northeast corner



Location from Northwest corner