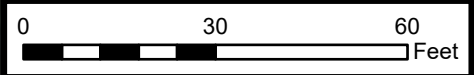
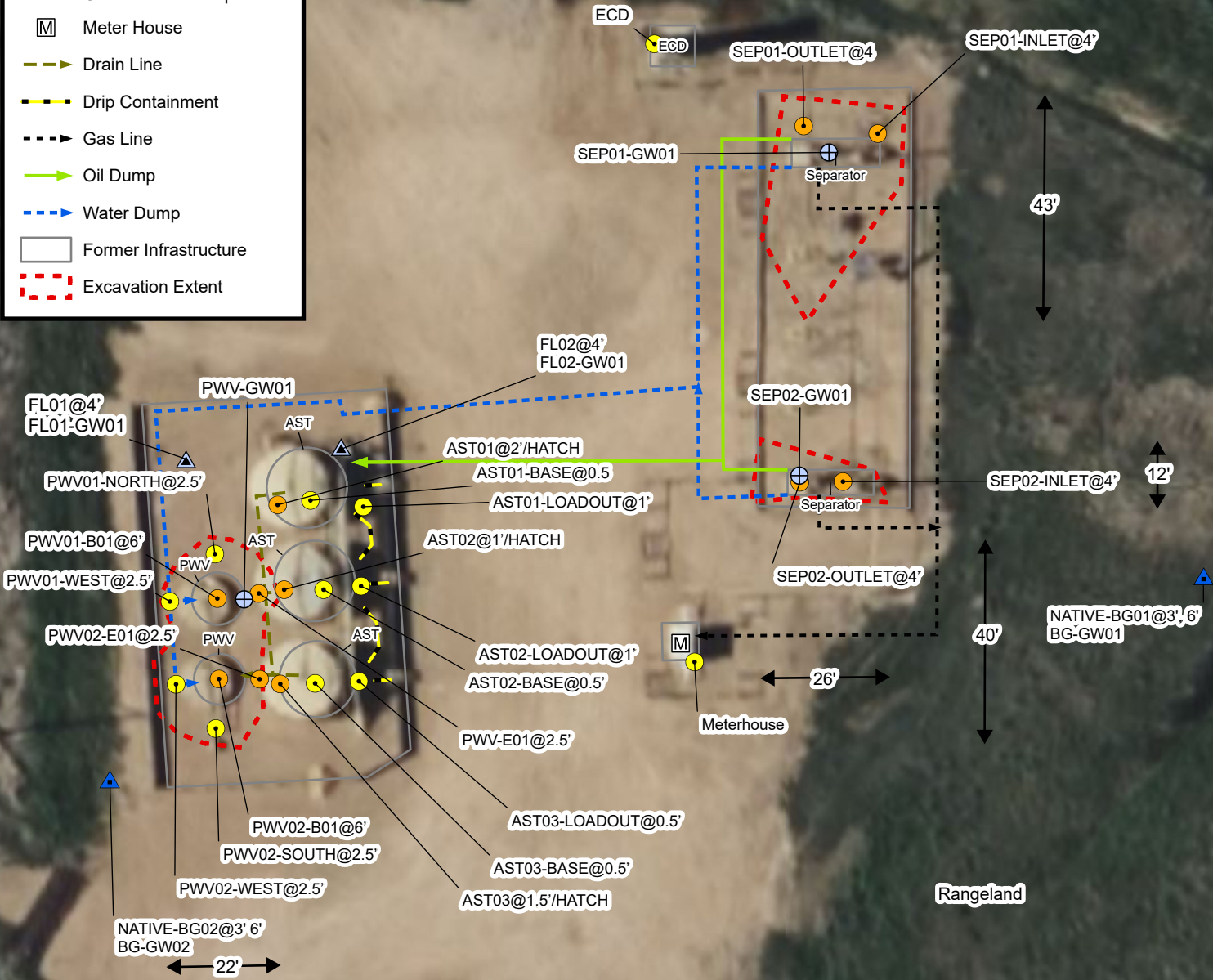


Legend

- ▲ Background Soil Sample
- ⊕ Groundwater Sample
- Soil Sample
- Soil Screening
- ▲ Soil Sample/Groundwater Sample
- ▲ Background Soil Sample/ Groundwater Sample
- M Meter House
- Drain Line
- Drip Containment
- - - Gas Line
- Oil Dump
- Water Dump
- Former Infrastructure
- Excavation Extent



Rangeland



Sources: Environmental Systems Research Institute (ESRI)

Default Folder: C:\Users\Owner\OneDrive - ENSOLUM, LLC\Documents\GIS\ - Projects\Kerr-McGee Oil and Gas Onshore, LP\09A1417396 - Sharkey8& 9-35 & 10-3 O SA Facility



Excavation Site Map (12/28/24 - 12/29/24)
 Sharkey8& 9-35 & 10-3 O SA Facility Kerr-McGee Oil and Gas
 Onshore, LP
 SESE SEC 35-T4N-R67W
 Weld County, Colorado
 Project Number: 09A1417396

**FIGURE
1A**