

PHOTO LOG
SHARKEY 8 & 9-35 & 10-3 O SA FACILITY
WELD COUNTY, COLORADO
KERR-MCGEE OIL & GAS ONSHORE, LP

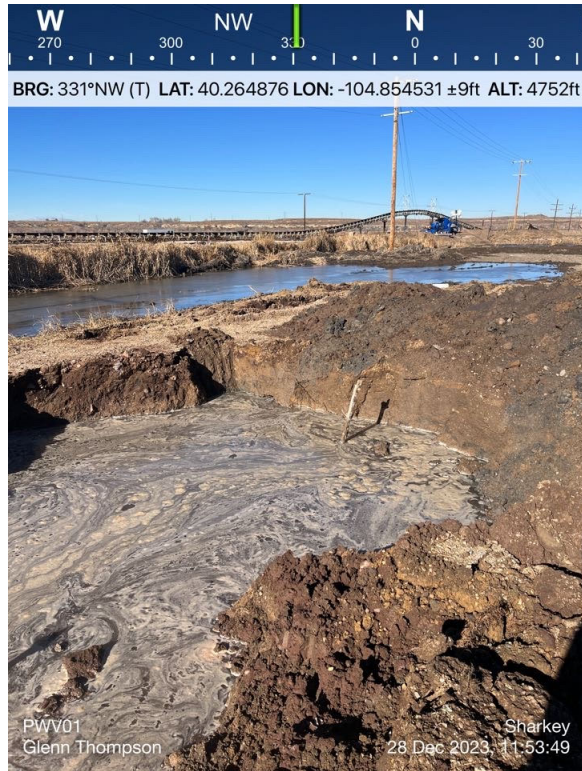


AST 02 Footprint

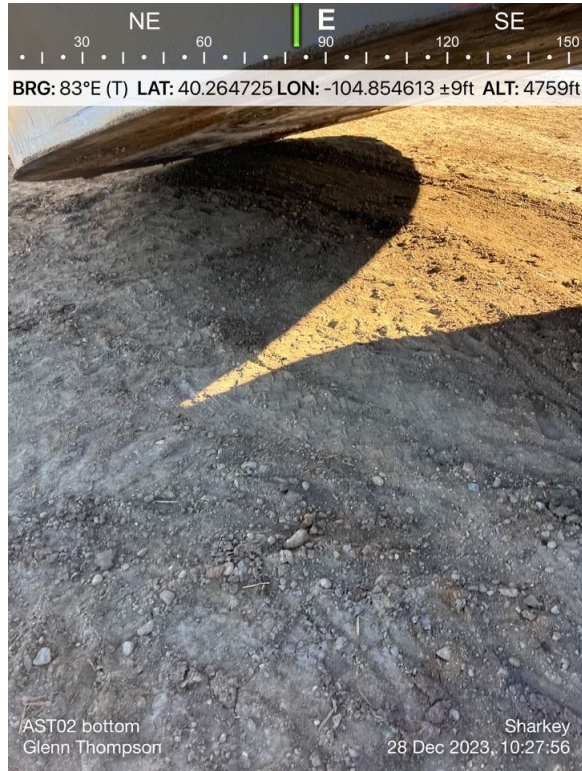


AST 01 Bottom

PHOTO LOG
SHARKEY 8 & 9-35 & 10-3 O SA FACILITY
WELD COUNTY, COLORADO
KERR-MCGEE OIL & GAS ONSHORE, LP



PWV 01 Excavation
(Groundwater Present in Excavation)



AST02 Bottom

PHOTO LOG
SHARKEY 8 & 9-35 & 10-3 O SA FACILITY
WELD COUNTY, COLORADO
KERR-MCGEE OIL & GAS ONSHORE, LP

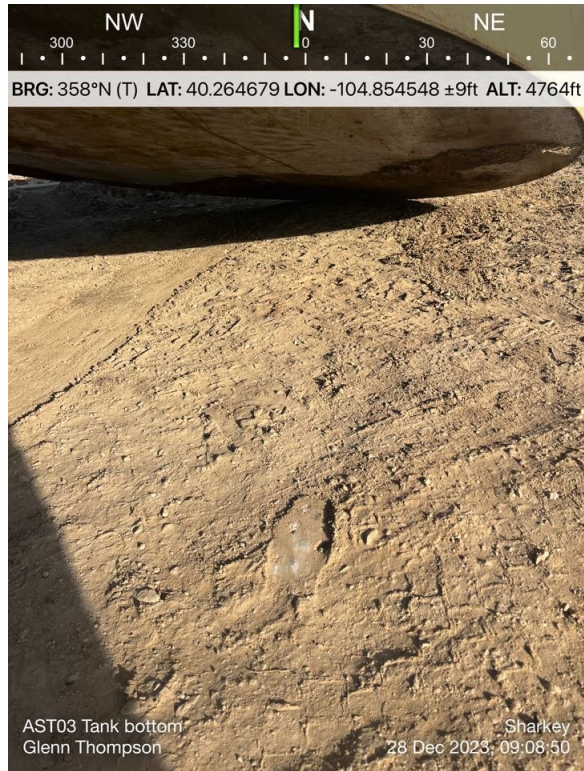


PWV 02 Excavation
(Groundwater Present in Excavation)

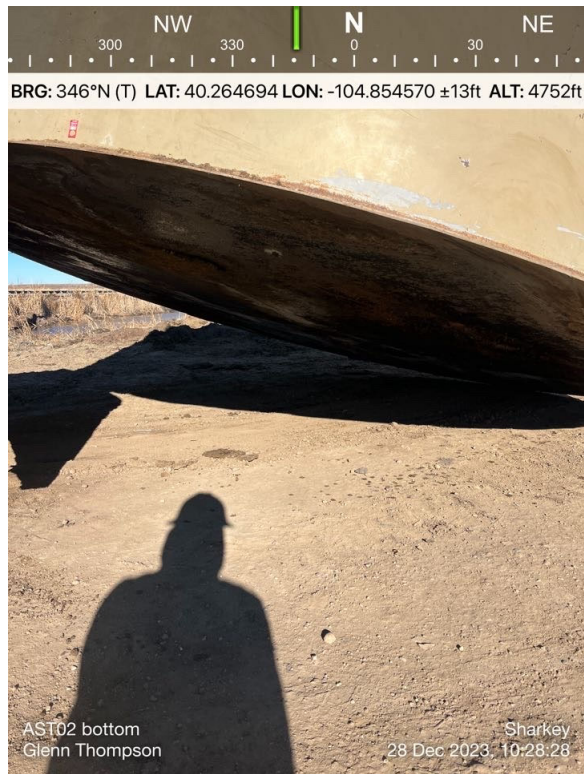


AST 03 Bottom

PHOTO LOG
SHARKEY 8 & 9-35 & 10-3 O SA FACILITY
WELD COUNTY, COLORADO
KERR-MCGEE OIL & GAS ONSHORE, LP



AST 03 Bottom



AST 02 Bottom

PHOTO LOG
SHARKEY 8 & 9-35 & 10-3 O SA FACILITY
WELD COUNTY, COLORADO
KERR-MCGEE OIL & GAS ONSHORE, LP



AST 01 Footprint



AST 01 Bottom

PHOTO LOG
SHARKEY 8 & 9-35 & 10-3 O SA FACILITY
WELD COUNTY, COLORADO
KERR-MCGEE OIL & GAS ONSHORE, LP



AST 03 Footprint



SEP01-OUTLET

PHOTO LOG
SHARKEY 8 & 9-35 & 10-3 O SA FACILITY
WELD COUNTY, COLORADO
KERR-MCGEE OIL & GAS ONSHORE, LP



BG01



BG02

PHOTO LOG
SHARKEY 8 & 9-35 & 10-3 O SA FACILITY
WELD COUNTY, COLORADO
KERR-MCGEE OIL & GAS ONSHORE, LP



SEP01



Dumplines

PHOTO LOG
SHARKEY 8 & 9-35 & 10-3 O SA FACILITY
WELD COUNTY, COLORADO
KERR-MCGEE OIL & GAS ONSHORE, LP



Meterhouse



ECD

PHOTO LOG
SHARKEY 8 & 9-35 & 10-3 O SA FACILITY
WELD COUNTY, COLORADO
KERR-MCGEE OIL & GAS ONSHORE, LP



AST 03 Footprint

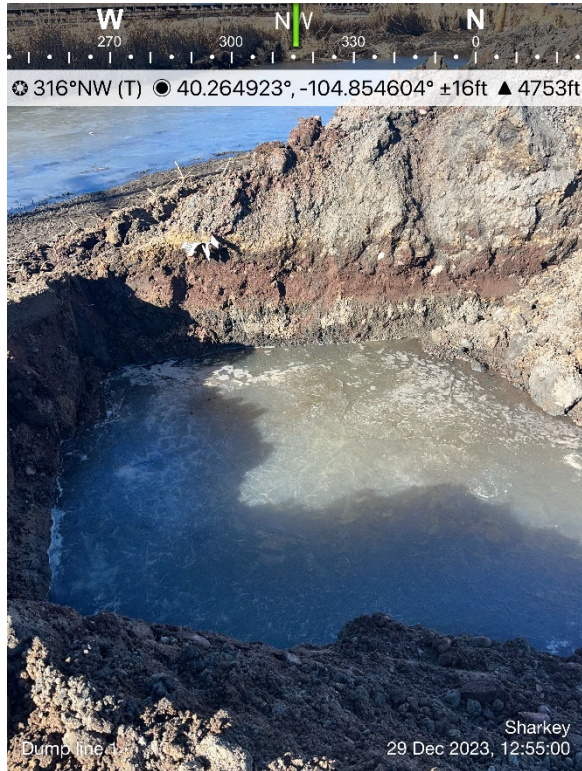


SEP02

PHOTO LOG
SHARKEY 8 & 9-35 & 10-3 O SA FACILITY
WELD COUNTY, COLORADO
KERR-MCGEE OIL & GAS ONSHORE, LP



Sep 02



SEP02

PHOTO LOG
SHARKEY 8 & 9-35 & 10-3 O SA FACILITY
WELD COUNTY, COLORADO
KERR-MCGEE OIL & GAS ONSHORE, LP



ECD



Meter House

PHOTO LOG
SHARKEY 8 & 9-35 & 10-3 O SA FACILITY
WELD COUNTY, COLORADO
KERR-MCGEE OIL & GAS ONSHORE, LP

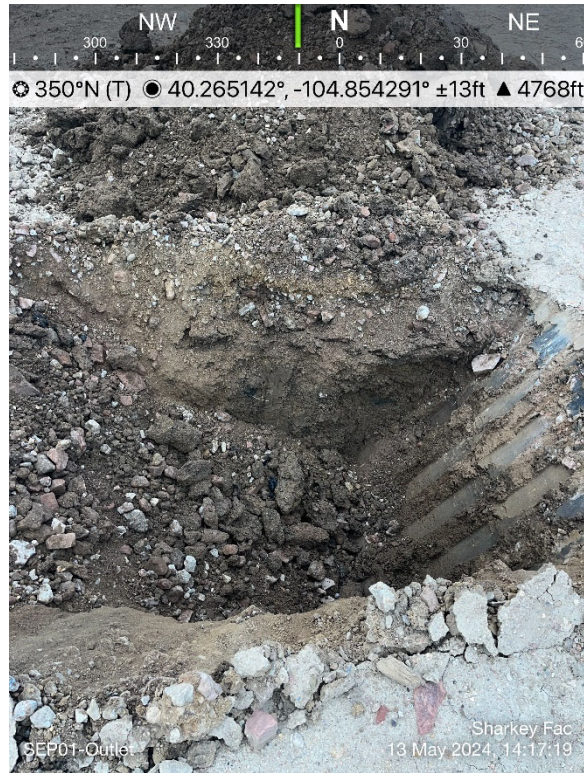


Dumplines



Sep 01

PHOTO LOG
SHARKEY 8 & 9-35 & 10-3 O SA FACILITY
WELD COUNTY, COLORADO
KERR-MCGEE OIL & GAS ONSHORE, LP



Seperator 01 Outlet



B01

PHOTO LOG
SHARKEY 8 & 9-35 & 10-3 O SA FACILITY
WELD COUNTY, COLORADO
KERR-MCGEE OIL & GAS ONSHORE, LP



B01 Backfilled



B02

PHOTO LOG
SHARKEY 8 & 9-35 & 10-3 O SA FACILITY
WELD COUNTY, COLORADO
KERR-MCGEE OIL & GAS ONSHORE, LP



B03



B04

PHOTO LOG
SHARKEY 8 & 9-35 & 10-3 O SA FACILITY
WELD COUNTY, COLORADO
KERR-MCGEE OIL & GAS ONSHORE, LP



B05

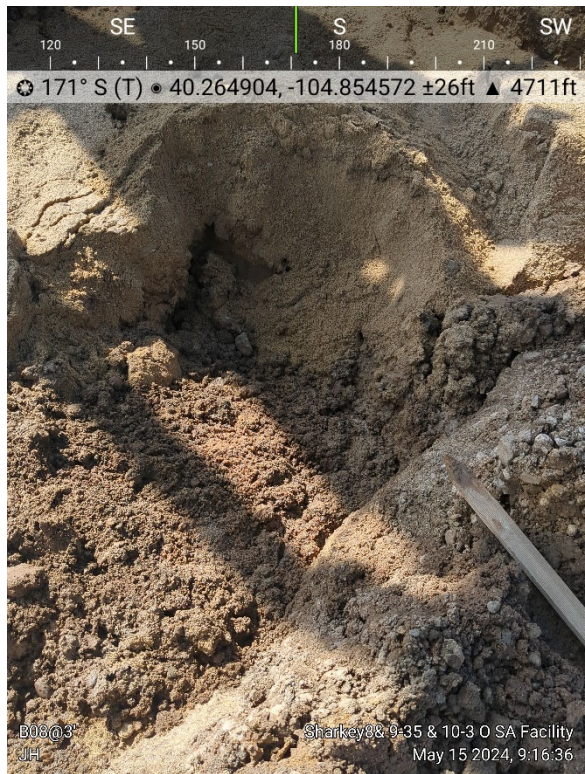


B06

PHOTO LOG
SHARKEY 8 & 9-35 & 10-3 O SA FACILITY
WELD COUNTY, COLORADO
KERR-MCGEE OIL & GAS ONSHORE, LP

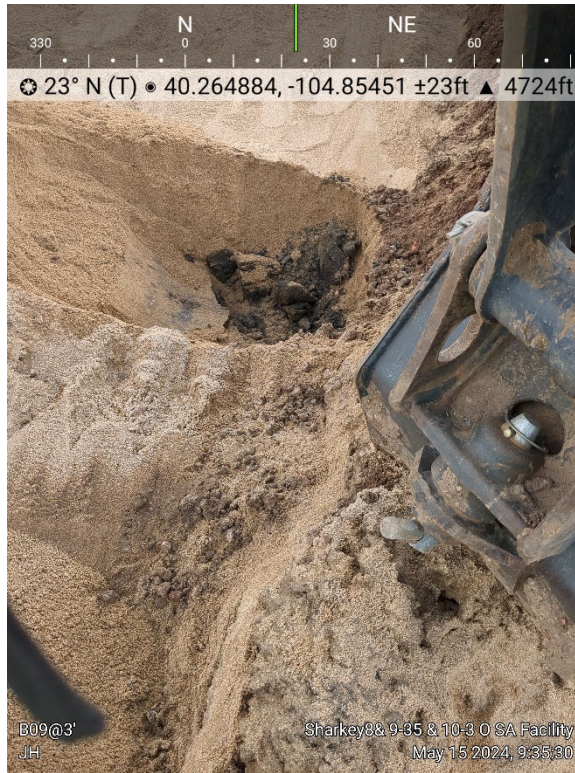


B07



B08

PHOTO LOG
SHARKEY 8 & 9-35 & 10-3 O SA FACILITY
WELD COUNTY, COLORADO
KERR-MCGEE OIL & GAS ONSHORE, LP



B09

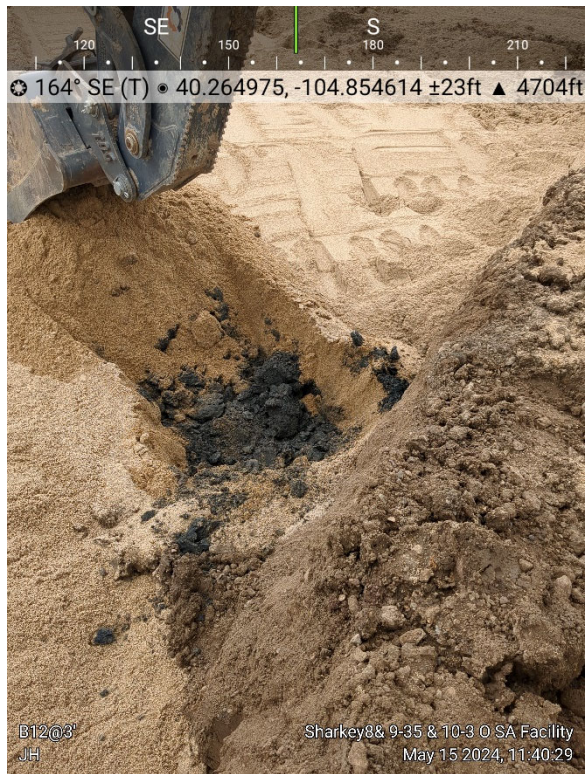


B10

PHOTO LOG
SHARKEY 8 & 9-35 & 10-3 O SA FACILITY
WELD COUNTY, COLORADO
KERR-MCGEE OIL & GAS ONSHORE, LP



B11 w/ GW



B12

PHOTO LOG
SHARKEY 8 & 9-35 & 10-3 O SA FACILITY
WELD COUNTY, COLORADO
KERR-MCGEE OIL & GAS ONSHORE, LP



B13



B14

PHOTO LOG
SHARKEY 8 & 9-35 & 10-3 O SA FACILITY
WELD COUNTY, COLORADO
KERR-MCGEE OIL & GAS ONSHORE, LP



B15



B07-B10

PHOTO LOG
SHARKEY 8 & 9-35 & 10-3 O SA FACILITY
WELD COUNTY, COLORADO
KERR-MCGEE OIL & GAS ONSHORE, LP



B13&B14



Backfill in process

PHOTO LOG
SHARKEY 8 & 9-35 & 10-3 O SA FACILITY
WELD COUNTY, COLORADO
KERR-MCGEE OIL & GAS ONSHORE, LP

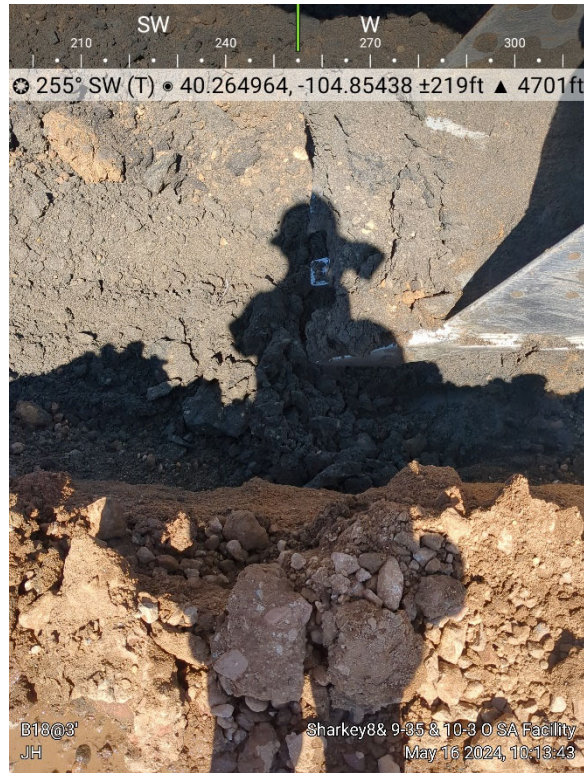


B16

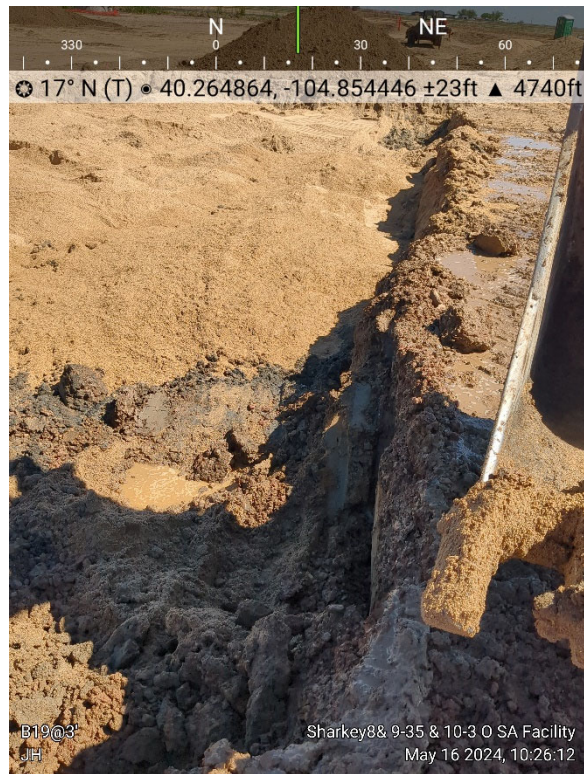


B17

PHOTO LOG
SHARKEY 8 & 9-35 & 10-3 O SA FACILITY
WELD COUNTY, COLORADO
KERR-MCGEE OIL & GAS ONSHORE, LP

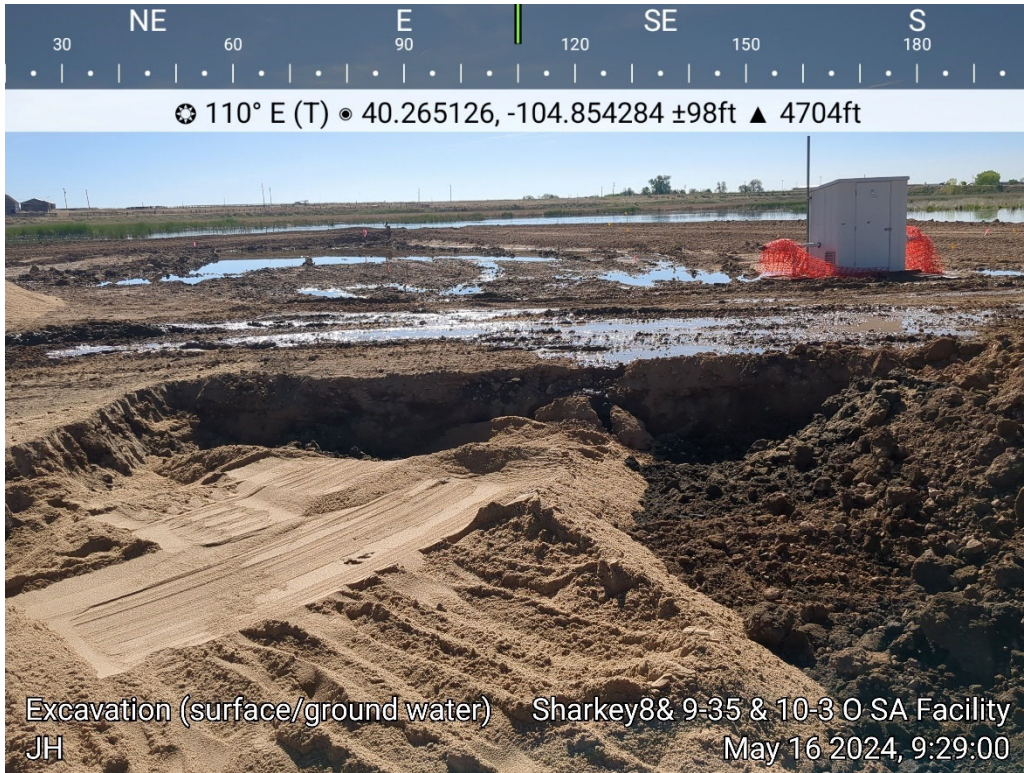


B18



B19

PHOTO LOG
SHARKEY 8 & 9-35 & 10-3 O SA FACILITY
WELD COUNTY, COLORADO
KERR-MCGEE OIL & GAS ONSHORE, LP



B16,B18&B19



Backfill in process

PHOTO LOG
SHARKEY 8 & 9-35 & 10-3 O SA FACILITY
WELD COUNTY, COLORADO
KERR-MCGEE OIL & GAS ONSHORE, LP



B20



B21

PHOTO LOG
SHARKEY 8 & 9-35 & 10-3 O SA FACILITY
WELD COUNTY, COLORADO
KERR-MCGEE OIL & GAS ONSHORE, LP



B25



B25 Backfill in process

PHOTO LOG
SHARKEY 8 & 9-35 & 10-3 O SA FACILITY
WELD COUNTY, COLORADO
KERR-MCGEE OIL & GAS ONSHORE, LP



B29



B30