



<<< Fold Here >>>

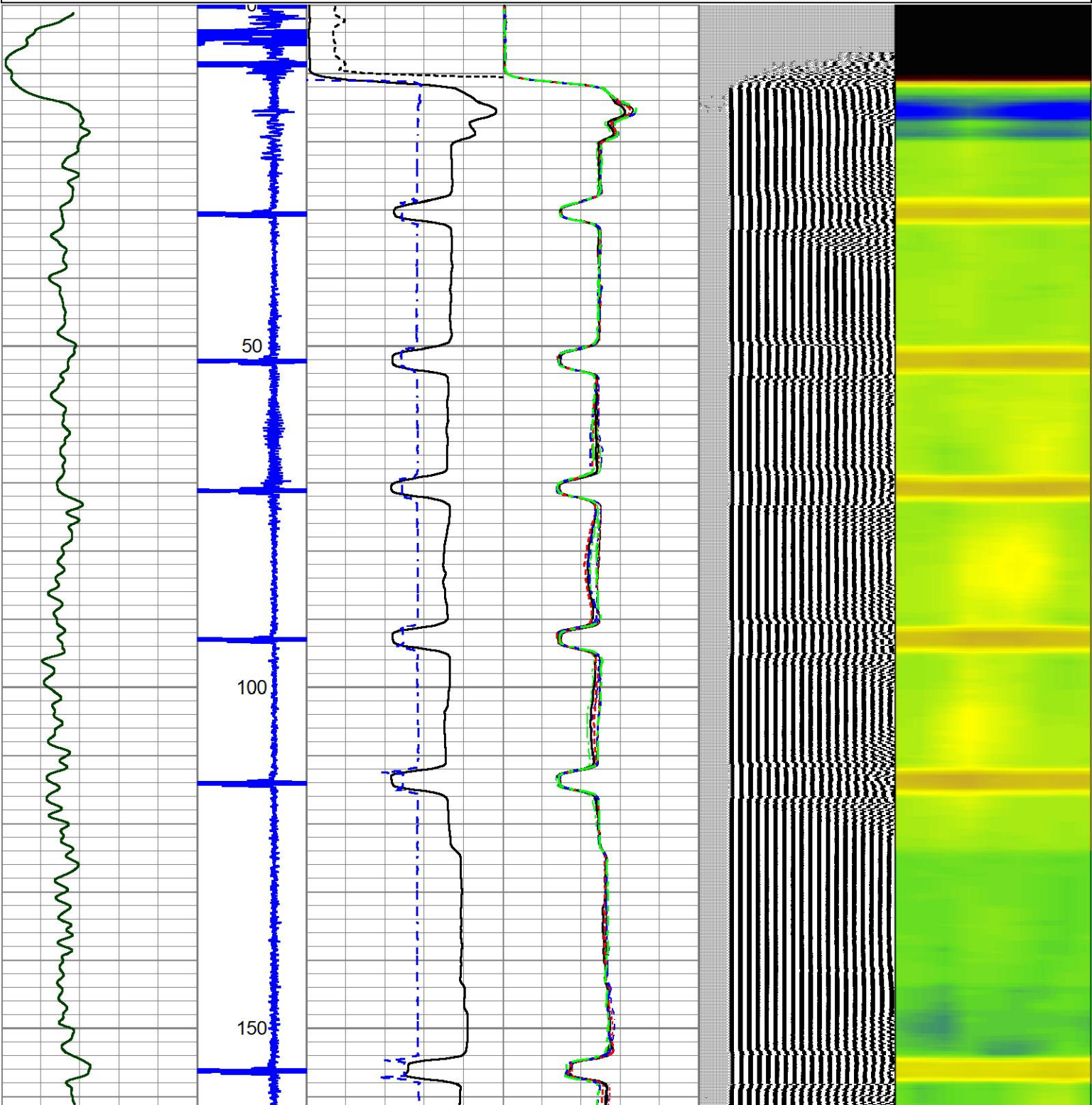
Comments

THANK YOU FOR USING A-PLUS P&A LLC

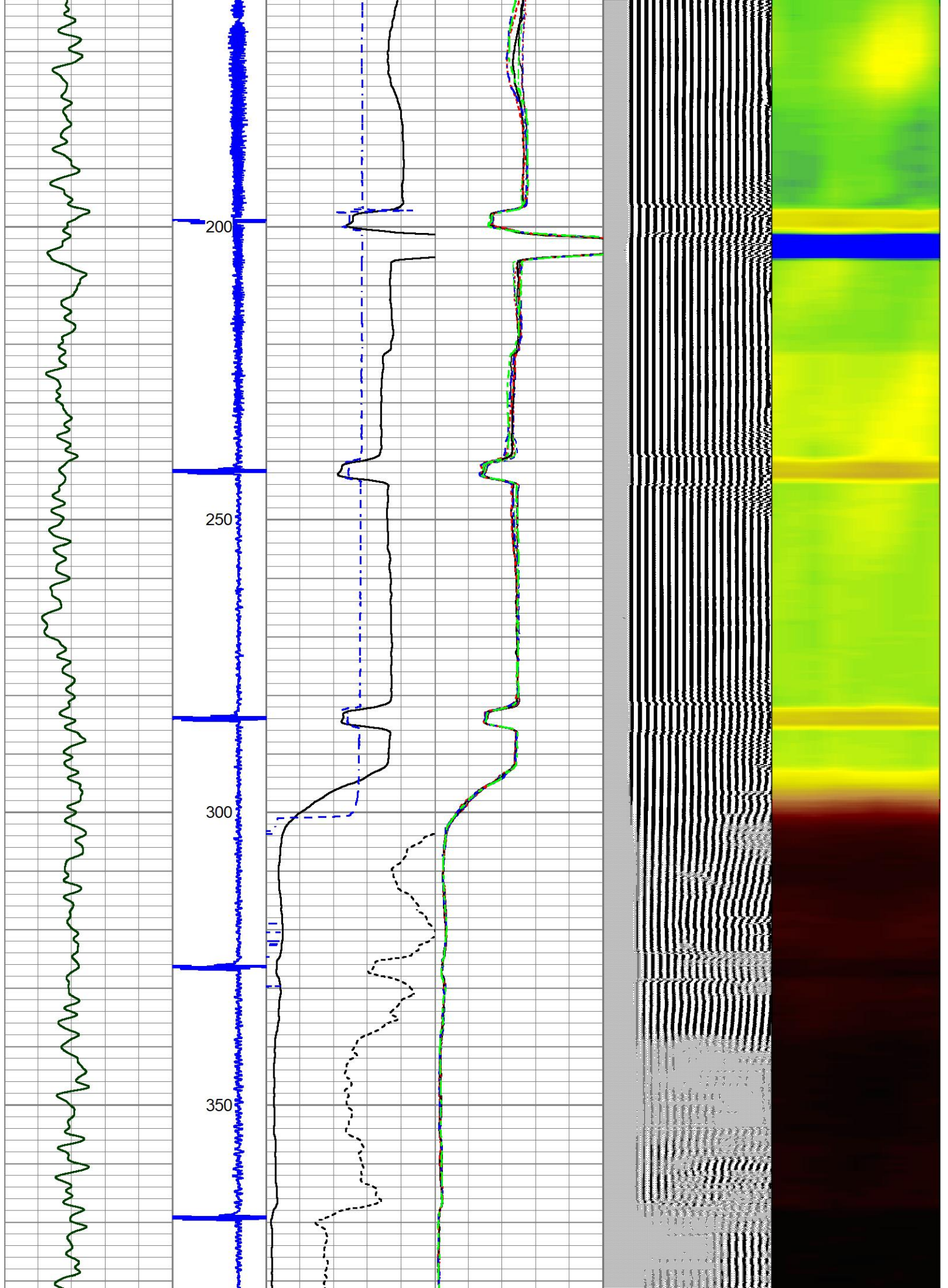


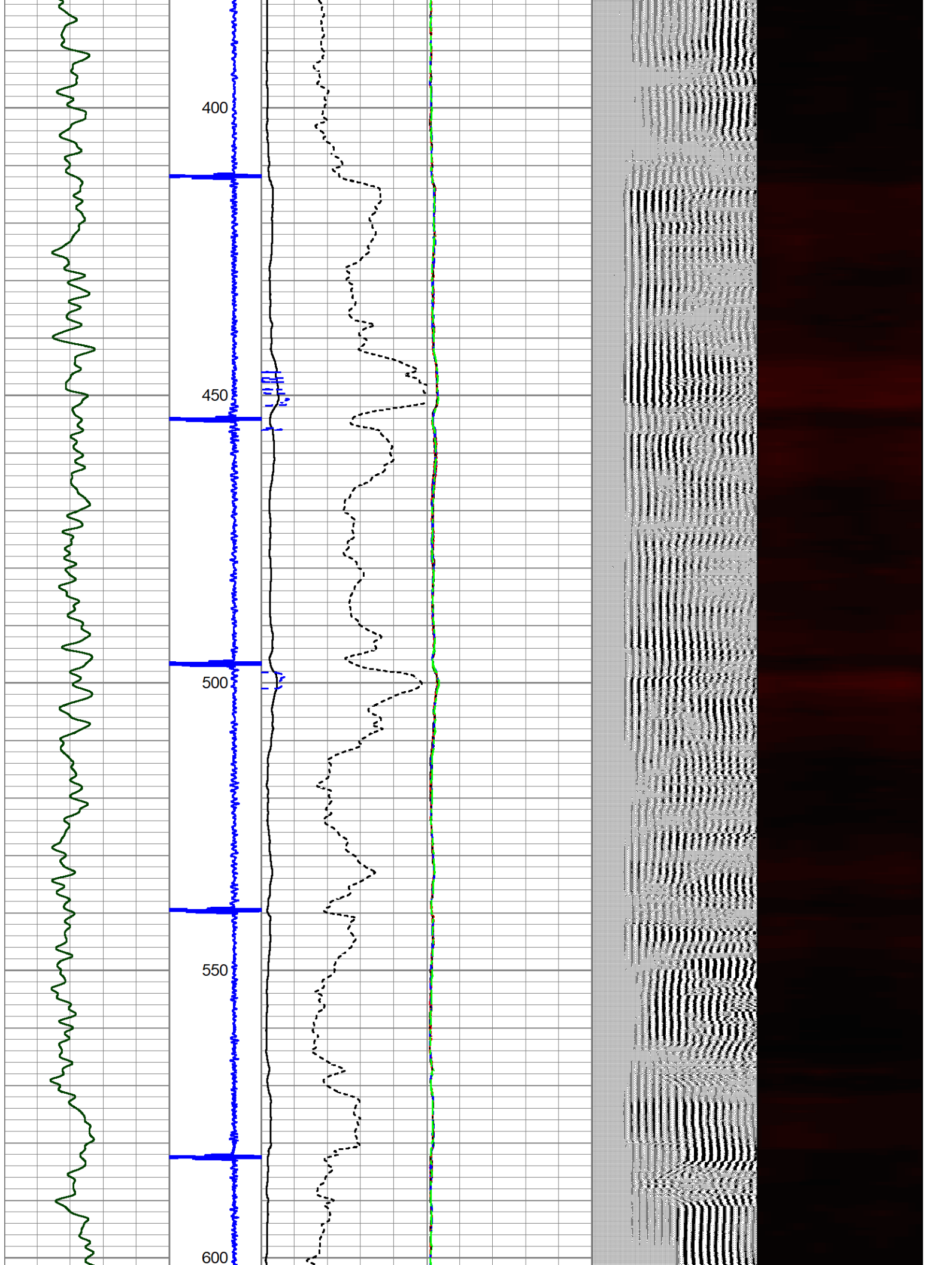
Database File	5-17-24 wells ranch rbl.db
Dataset Pathname	pass6
Presentation Format	rbl pres
Dataset Creation	Fri May 17 08:06:26 2024
Charted by	Depth in Feet scaled 1:240

0	GR (GAPI)	200	-4	DCCL	1	0	AMP (mV)	100	0	AMPS1	150	200	VDL (usec)	1200	1	Cement Map	8
						0	AMPx10 (mV)	10	0	AMPS2	150						
						350	TT (usec)	250	0	AMPS3	150						
									0	AMPS4	150						
									0	AMPS5	150						
									0	AMPS6	150						
									0	AMPS7	150						
									0	AMPS8	150						

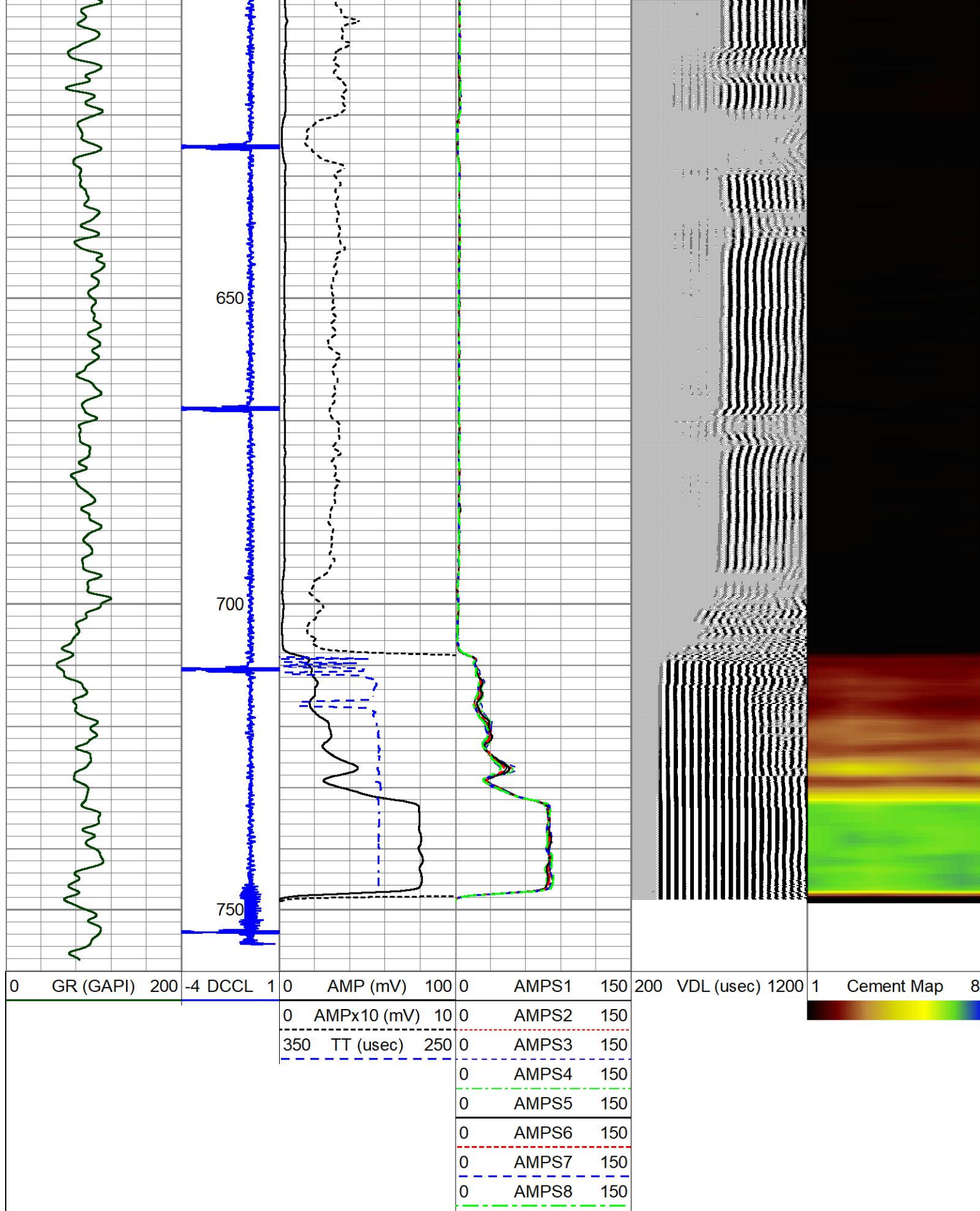








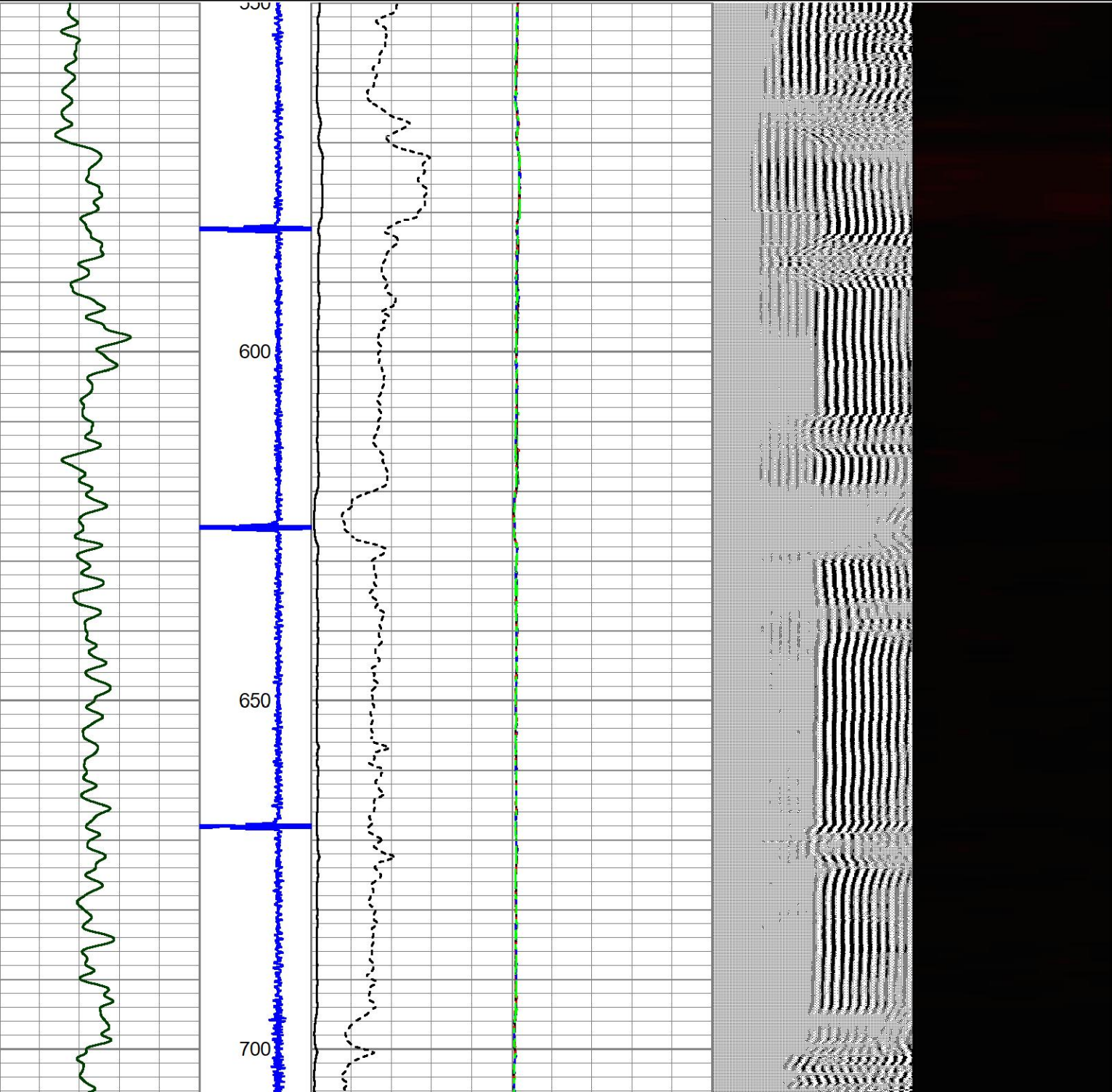




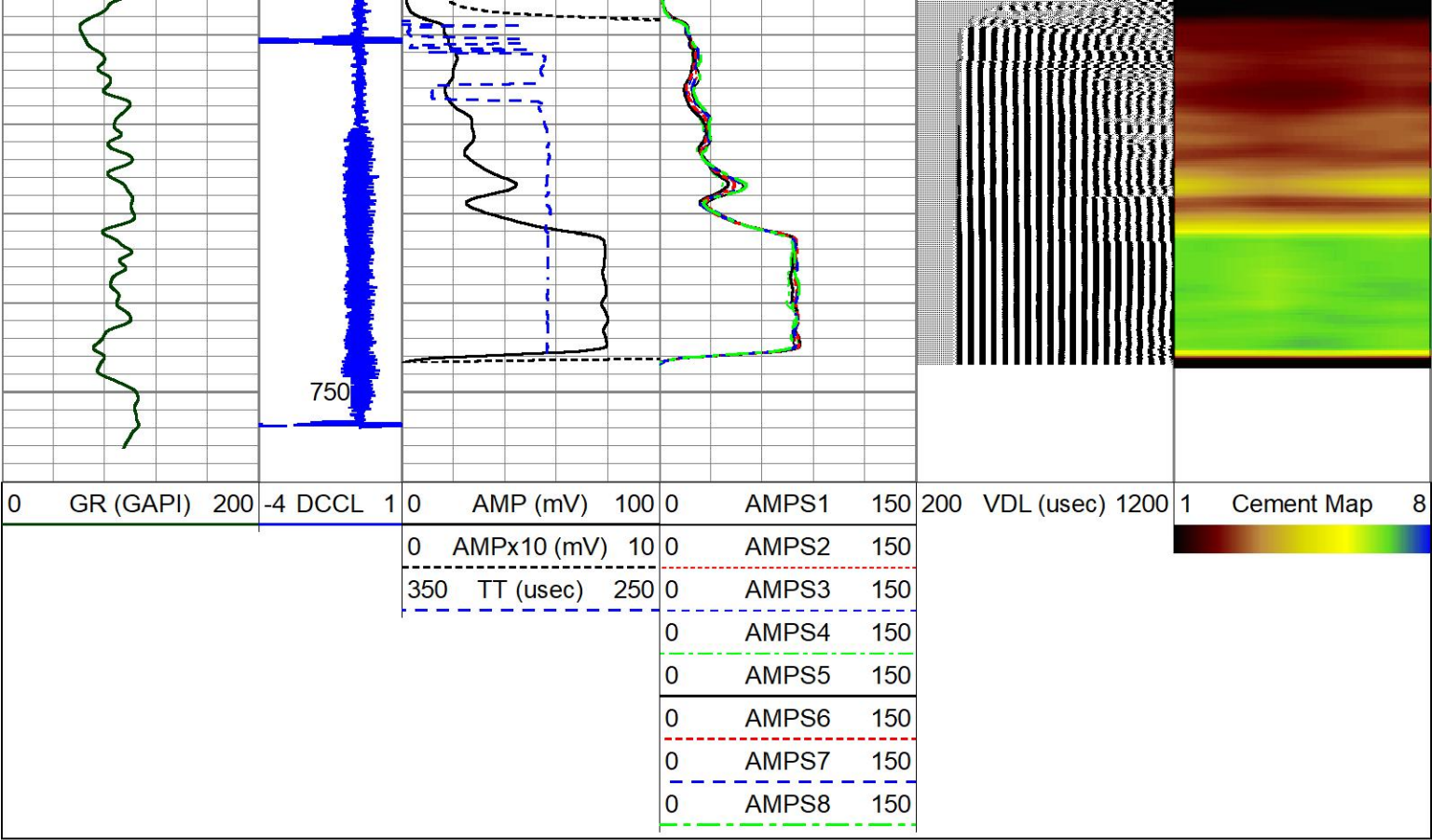
REPEAT PASS

Database File 5-17-24 wells ranch rbl.db  
Dataset Pathname pass4  
Presentation Format rbl pres  
Dataset Creation Fri May 17 08:00:13 2024  
Charted by Depth in Feet scaled 1:240

0	GR (GAPI)	200	-4	DCCL	1	0	AMP (mV)	100	0	AMPS1	150	200	VDL (usec)	1200	1	Cement Map	8
						0	AMPx10 (mV)	10	0	AMPS2	150						
						350	TT (usec)	250	0	AMPS3	150						
									0	AMPS4	150						
									0	AMPS5	150						
									0	AMPS6	150						
									0	AMPS7	150						
									0	AMPS8	150						

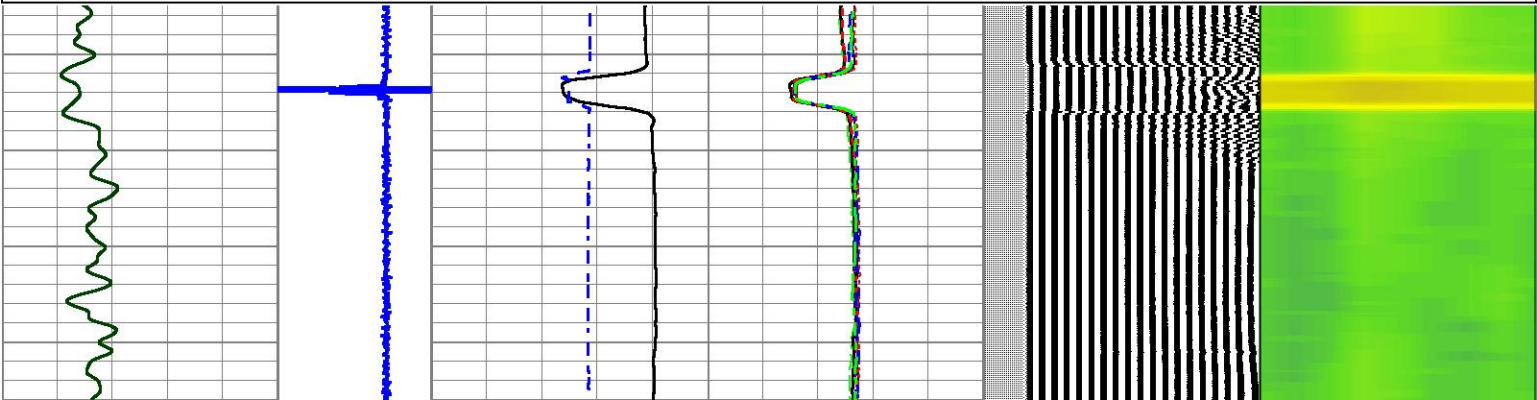
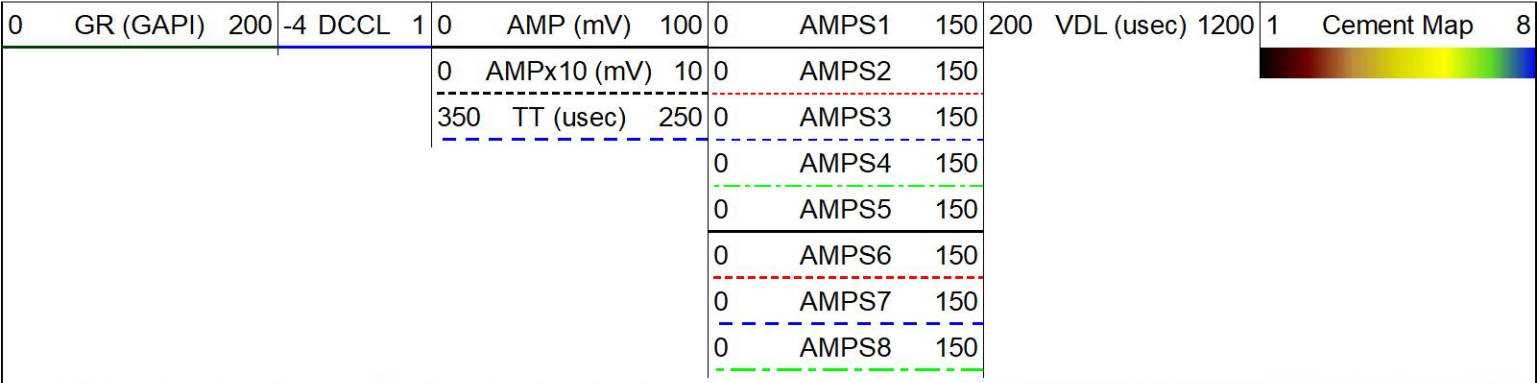


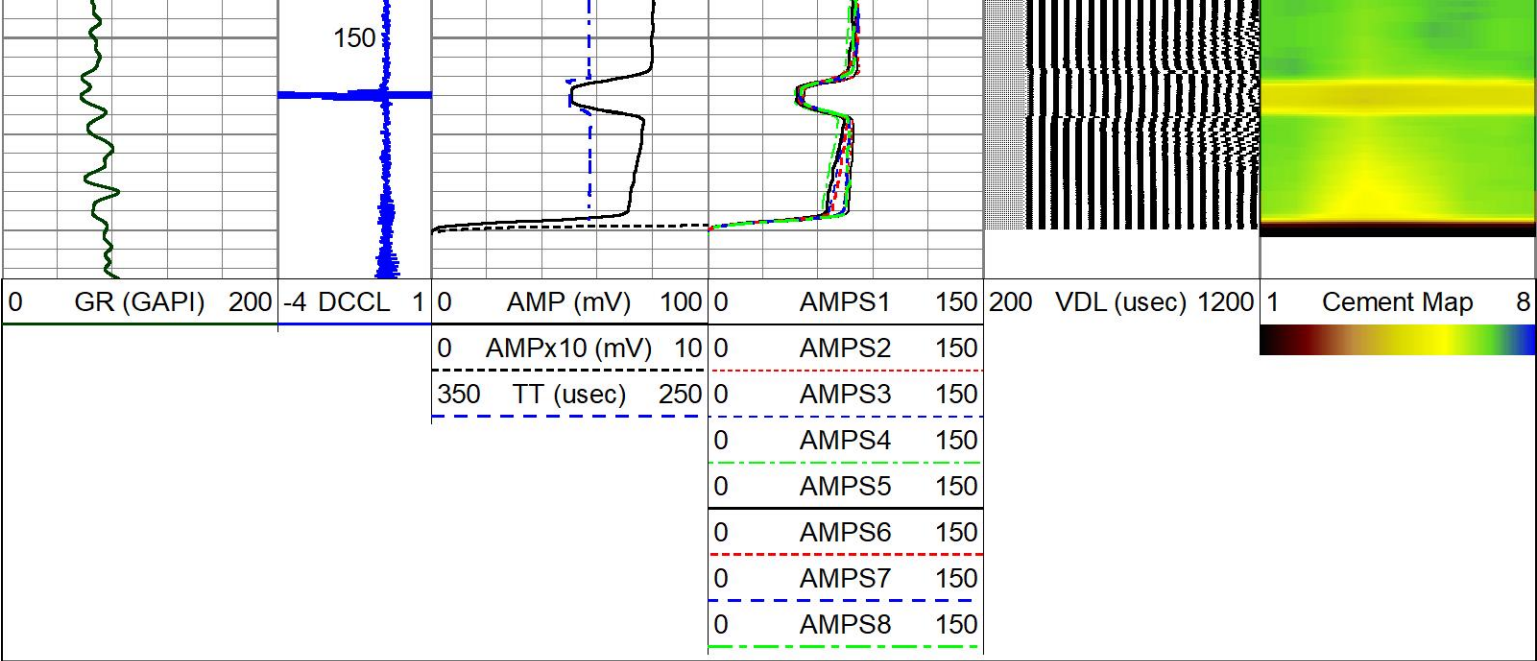




# CALIBRATION PASS

Database File 5-17-24 wells ranch rbl.db  
Dataset Pathname pass2  
Presentation Format rbl pres  
Dataset Creation Fri May 17 07:50:12 2024  
Charted by Depth in Feet scaled 1:240





Calibration Report		
Database File	5-17-24 wells ranch rbl.db	
Dataset Pathname	pass6	
Dataset Creation	Fri May 17 08:06:26 2024	

Gamma Ray Calibration Report		
Serial Number:	GCL004_base	
Tool Model:	GCL004	
Performed:	(Not Performed)	
Calibrator Value:	1.0	GAPI
Background Reading:	0.0	cps
Calibrator Reading:	1.0	cps
Sensitivity:	1.0000	GAPI/cps

Segmented Cement Bond Log Calibration Report		
Serial Number:	FW2001-30	
Tool Model:	HTRCB-275	
Calibration Casing Diameter:	4.500	in
Calibration Depth:	145.408	ft

Master Calibration, performed Fri May 17 07:49:14 2024:						
	Raw (v)		Calibrated (mv)		Results	
	Zero	Cal	Zero	Cal	Gain	Offset
3'	-0.001	1.072	0.000	81.196	75.630	0.092
CAL	-0.002	1.396				
5'	-0.002	1.099	0.000	81.196	73.770	0.138
SUM						
S1	-0.002	1.049	0.000	81.196	77.215	0.170
S2	-0.002	1.027	0.000	81.196	78.872	0.189
S3	-0.002	1.032	0.000	81.196	78.472	0.192
S4	-0.002	1.086	0.000	81.196	74.625	0.153
S5	-0.002	1.118	0.000	81.196	72.540	0.114
S6	-0.002	1.116	0.000	81.196	72.612	0.146
S7	-0.002	1.077	0.000	81.196	75.193	0.178
S8	-0.002	1.038	0.000	81.196	78.092	0.140



Internal Reference Calibration, performed Fri May 17 07:34:26 2024:						
CAL	Raw (v)		Calibrated (v)		Results	
	Zero	Cal	Zero	Cal	Gain	Offset
	0.000	0.000	-0.002	1.396	1.000	0.000

Air Zero Calibration, performed (Not Performed):						
	Raw (v)		Calibrated (v)		Results	
	Zero		Zero		Offset	
3'	0.000		0.000		0.000	
5'	0.000		0.000		0.000	
SUM						
S1	0.000		0.000		0.000	
S2	0.000		0.000		0.000	
S3	0.000		0.000		0.000	
S4	0.000		0.000		0.000	
S5	0.000		0.000		0.000	
S6	0.000		0.000		0.000	
S7	0.000		0.000		0.000	
S8	0.000		0.000		0.000	

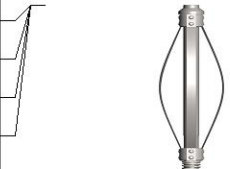
Inclinometer Calibration Report						
Performed:	(Not Performed)					
	Low Read.	High Read.		Low Ref.	High Ref.	
X Accelerometer	0.00	1.00		0.00	1.00	gee
Y Accelerometer	0.00	1.00		0.00	1.00	gee
Z Accelerometer	0.00	1.00		0.00	1.00	gee

Log Variables

DatabaseC:\ProgramData\Warrior\Data\5-17-24 wells ranch rbl.db  
Dataset field/well/run1/pass6/\_vars\_

Top - Bottom

BOREID in 7.875	BOTTEMP degF 100	CASEOD in 4.5	CASETHCK in 0	CASEWGHT lb/ft 11.6	MAXAMPL mV 0	MINAMPL mV 1	MINATTN db/ft 0.8
PERFS  No	PPT usec 0	SRFTEMP degF 0	TDEPTH ft 0				

Sensor	Offset (ft)	Schematic	Description	Length (ft)	O.D. (in)	Weight (lb)
GCT_FMWR	24.36		CENT-BC275-0000 Probe 2.75" Bowspring Centralizer	2.83	2.75	24.00
mSec_Count	24.36					
RBT_Status	24.36					
Error_Ct	24.36					

