

WGS84 40.07109, -104.89985 Δ _{±12ft}^{ft} 5013 \angle _{±10}^{°T} W277
±15ft



ECMC
Environmental
Field Inspection



RMF Consolidation
© 22-Jul-24 12:31:14 PM
ECMC Environmental Inspection

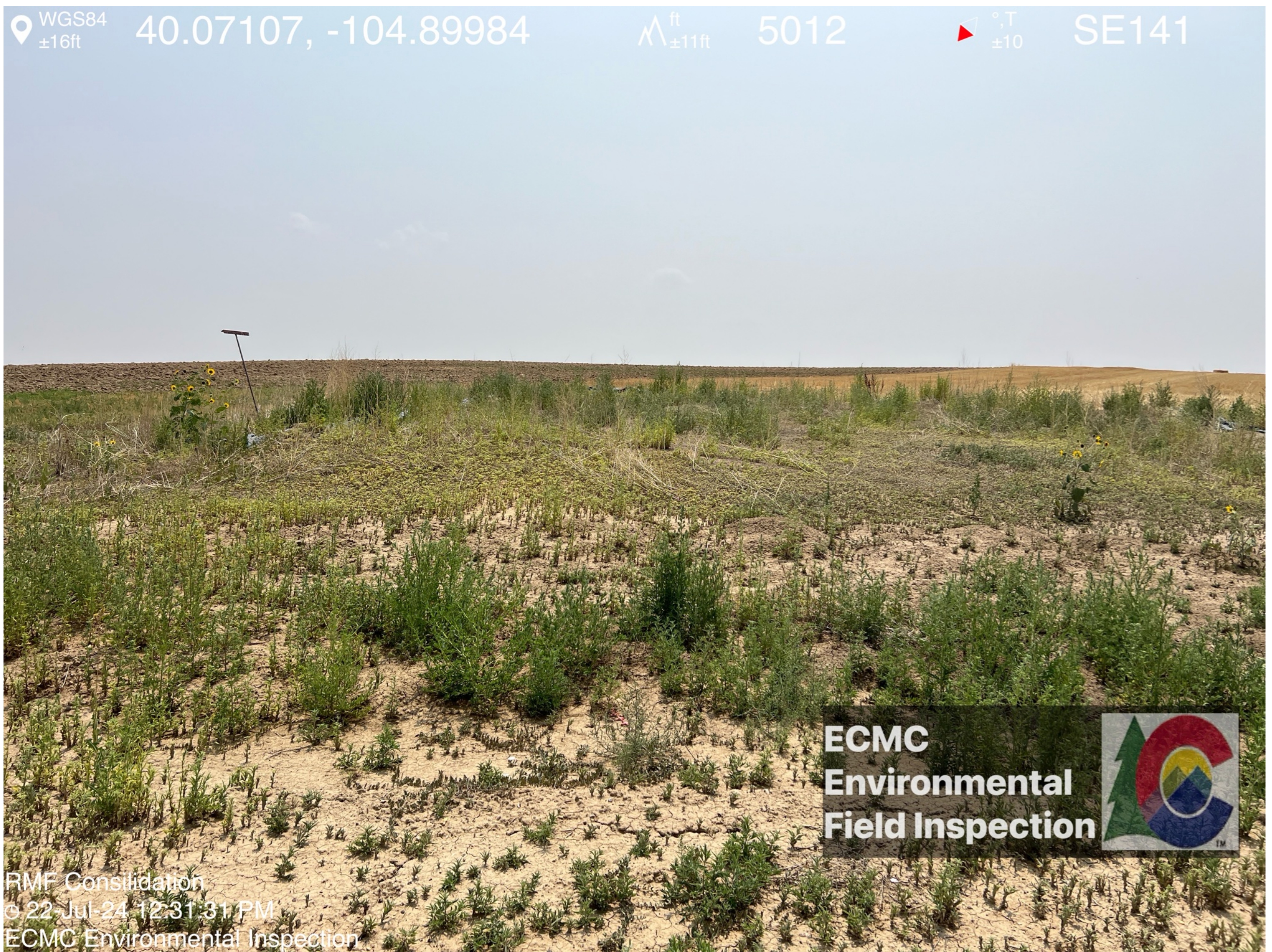
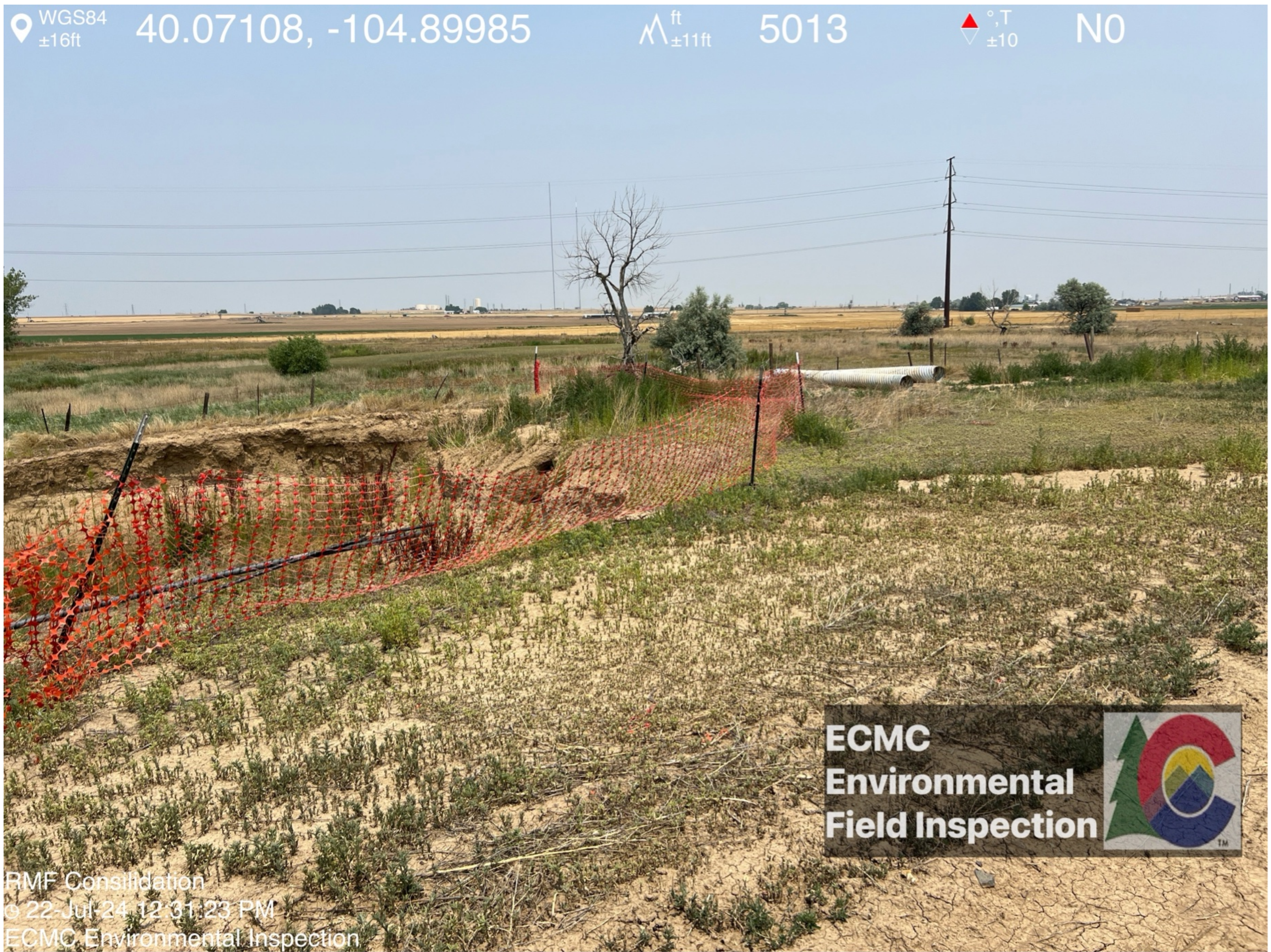
WGS84 40.07108, -104.89986 Δ _{±11ft}^{ft} 5014 \angle _{±10}^{°T} NW317
±16ft

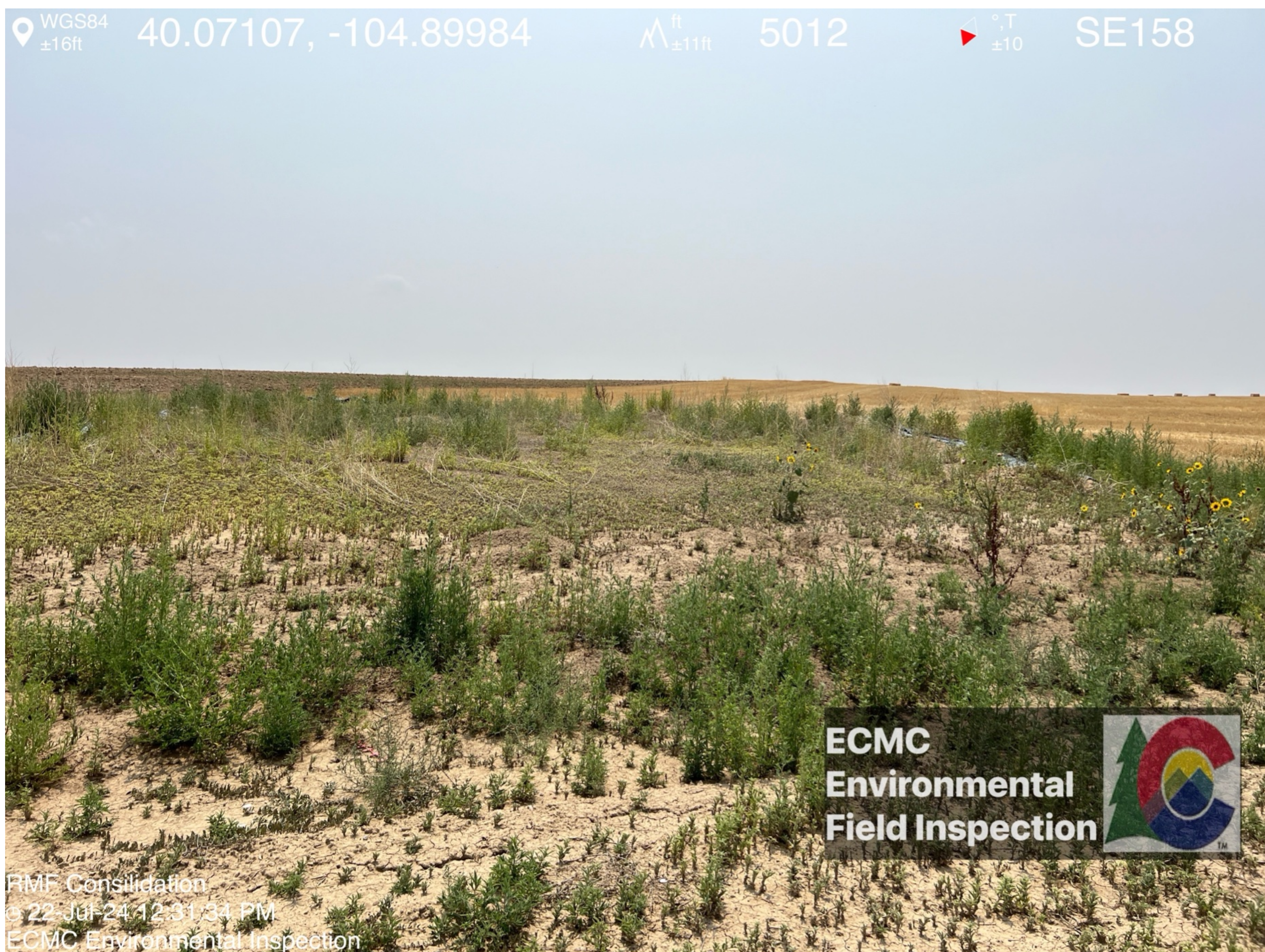


ECMC
Environmental
Field Inspection



RMF Consolidation
© 22-Jul-24 12:31:17 PM
ECMC Environmental Inspection





WGS84 40.07107, -104.89984 $\Delta_{\pm 11\text{ft}}^{\text{ft}}$ 5012 $\Delta_{\pm 10}^{\circ, \text{T}}$ SE158

**ECMC
Environmental
Field Inspection**



RMF Consolidation
© 22 Jul 24 12:31:34 PM
ECMC Environmental Inspection