



Bayswater Exploration & Production LLC

SURFACE POST JOB REPORT

Onyx Federal #2 05-123-52198
S:26 T:7N R:66W Weld CO

CallSheet #: 89689
Proposal #: 73188



SURFACE Post Job Report

Attention: Jeff Overman | joverman@bayswater.us
Bayswater Exploration & Production LLC
730 17TH STREET | DENVER, CO 80202

Dear Jeff Overman,

Thank you for the opportunity to provide cementing services on this well. American Cementing strives to achieve complete customer satisfaction. If you have any questions regarding the services or data provided, please contact American Cementing at any time.

Sincerely,

Aimee Sankovich

Field Engineer I | (307) 689-0323 | aimee.sankovich@americacementing.com

Field Office 1716 E Allison Rd, Cheyenne, WY 82007
Phone: (307) 414-0049

Job Details & Summary

Geometry

Type	Function	OD (in)	ID (in)	Weight (lb/ft)	Top (ft)	Bottom (ft)	Excess (%)
Open Hole	Outer		13.5		0	1731	25
Casing	Inner	9.625	8.921	36	0	1720	0

Equipment / People

Unit Type	Unit
Field Storage Silo	FSS-460
Cement Trailer Float	CTF-566
Cement Pump Float	CPF-184
Cement Utility Float	CUF-161

Timing

Event	Date/Time
ERTS	12/24/2023 00:00
Call Out	12/22/2023 23:00
Depart Facility	12/23/2023 03:00
On Location	12/23/2023 05:00
Rig Up Iron	12/23/2023 05:30
Job Started	12/23/2023 07:05
Job Completed	12/23/2023 09:57
Rig Down Iron	12/23/2023 10:00
Depart Location	12/23/2023 12:00

General Job Information

Metrics	Value
Well Fluid Density	8.8 lb/gal
Well Fluid Type	Water
Rig Circulation Vol	300 bbls
Rig Circulation Time	0.5 hours
Calculated Displacement	130 bbls
Actual Displacement	130 bbls
Total Spacer to Surface	20 bbls
Total CMT to Surface	30 bbls
Well Topped Out	No

Casing Equipment

Type	Description	Qty
CENTRALIZER,9-5/8"NON-WELD		20

Job Details

Metrics	Value
Flare Prior to Job	No
Flare Prior to Job	0 units
Flare During Job	No
Flare During Job	0 units
Flare at End of Job	No
Flare at End of Job	0 units
Well Full Prior to Job	Yes
Well Fluid Density Into Well	8.8 lb/gal
Well Fluid Density Out of Well	8.8 lb/gal

Job Details (cont.)

Metrics	Value
BHCT	86 °F
BHST	110 °F

Water Analysis

Metrics	Value	Recommended
Water Source	Upright Rig Tank	
Temperature	60 °F	50-80 °F
pH Level	7	5.5-8.5
Chlorides	0 mg/L	0-3000 mg/L
Total Alkalinity	140	0-1000
Total Hardness	250 mg/L	0-500 mg/L
Carbonates	40 mg/L	0-100 mg/L
Sulfates	<200 mg/L	0-1500 mg/L
Potassium	0 mg/L	0-3000 mg/L
Iron	0 mg/L	0-300 mg/L

Circulation

Lost Circulation Experienced
No

Job Execution Information

Fluid	Product	Function	Density (lb/gal)	Yield (ft ³ /sk)	Water Rq. (gal/sk)	Water Rq. (gal/bbl)	Volume (sks)	Volume (bbl)	Designed Top (ft)
1	Fresh Water	Flush	8.34			42.00		20.00	0
2	Surface Lead	Lead	12.50	2.24	12.66		328.00	130.85	0
3	Surface Tail	Tail	13.00	1.99	10.80		168.00	59.54	1200
4	Neoflo	DisplacementFinal	7.30					130.00	0

Job Fluid Details

Fluid	Type	Fluid	Product	Function	Conc.	Uom
2	Lead	Surface Lead	CLASS G	Cement	100.00	%
2	Lead	Surface Lead	A-10	Accelerator	5.00	%BWOB
2	Lead	Surface Lead	A-2	Accelerator	3.00	lb/sk
2	Lead	Surface Lead	A-7P	Accelerator	2.00	lb/sk
2	Lead	Surface Lead	FP-24	Defoamer	0.30	%BWOB
3	Tail	Surface Tail	CLASS G	Cement	100.00	%
3	Tail	Surface Tail	A-10	Accelerator	5.00	%BWOB
3	Tail	Surface Tail	A-2	Accelerator	2.00	lb/sk
3	Tail	Surface Tail	A-7P	Accelerator	2.00	lb/sk
3	Tail	Surface Tail	FP-24	Defoamer	0.30	%BWOB

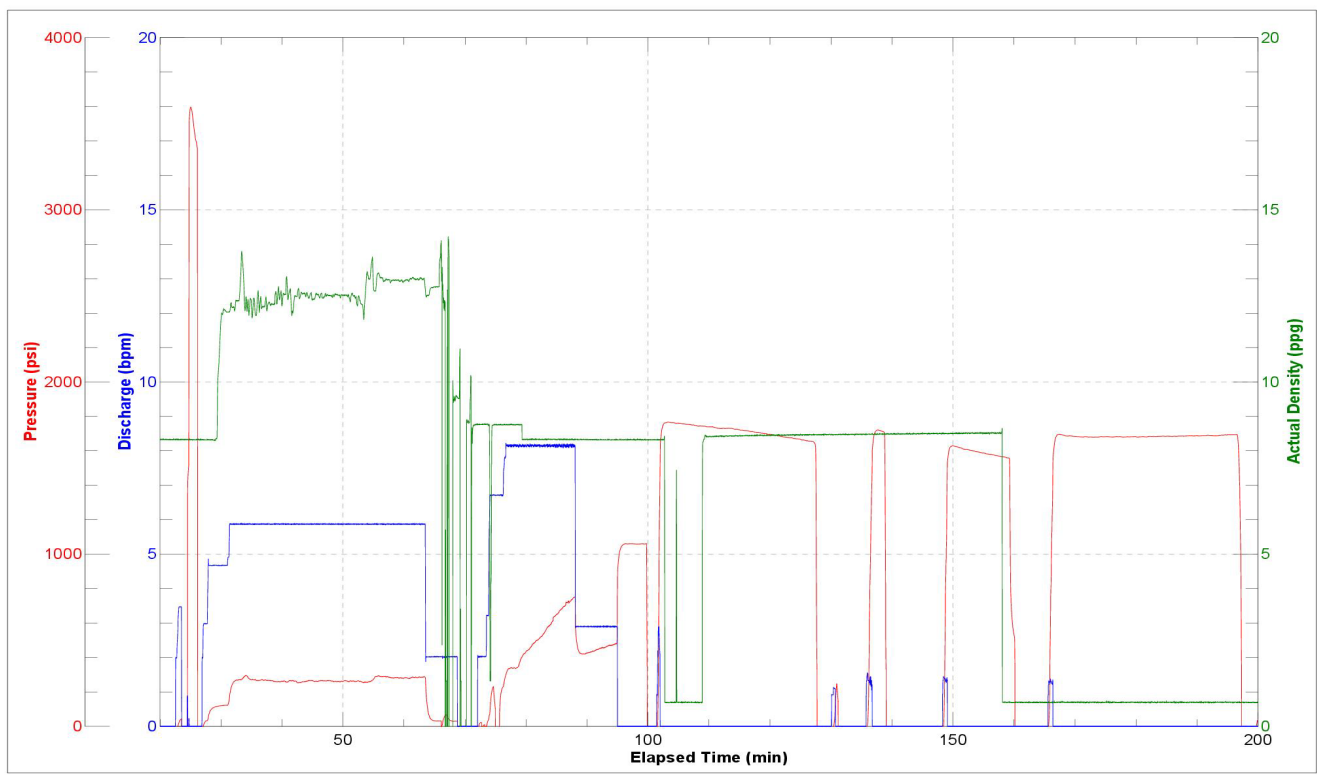
Job Logs

Line	Event	Date (MM/DD/YY)	Time (HH:MM)	Density (lb/gal)	Pump Rate (bpm)	Pump Volume (bbls)	Pipe Pressure (psi)	Comment
1	Call Out	12/22/2023	23:00					ACC gets called out requested time o/l was 0500
2	Depart Facility	12/23/2023	03:00					ACC departs facility
3	Arrive To Location	12/23/2023	05:00					ACC arrives to location rig is currently running casing
4	Rig Up	12/23/2023	05:30					ACC spots in units and gets rigged up
5	Safety Meeting	12/23/2023	06:40					ACC had a pre job safety meeting with rig hands and OSR, Went over job procedure
6	Pressure Test	12/23/2023	07:05				3600	Pressure test pumps and lines to 3600 psi
7	Pump FW W/Dye	12/23/2023	07:07	8.33	4.5	20	100	Pumped 20 bbls of of blue dye at 4.5 bpm w/ 100 psi
8	Pump Lead Cement	12/23/2023	07:11	12.5	6	130.85	270	Pumped 130.85 bbls Lead cmt (12.5 PPG 12.7 g/sk 2.24 yld 328 sks) at 6 bpm w/ 270 psi
9	Pump Tail Cement	12/23/2023	07:35	13	6	59.54	300	Pumped 59.54 bbls Tail cmt (13 PPG 10.8 g/sk 1.99 yld 168 sks) at 6 bpm w/ 300 psi
10	Shut Down	12/23/2023	07:48					Shut down pumping
11	Drop Plug	12/23/2023	07:50					Dropped plug
12	Pump Disp	12/23/2023	07:52	7.3	8		345	Start pumping disp at 8 bpm w/ 345 psi
13	Dye Tracer To Surface	12/23/2023	08:05	7.3	8	80	645	At 80 bbls away into disp got blue dye to surface at 8 bpm w/ 645 psi
14	Cement To Surface	12/23/2023	08:07	7.3	8	100	725	At 100 bbls away into disp got cmt back to surface at 8 bpm w/ 725 psi
15	Slow Rate	12/23/2023	08:09	7.3	3	110	450	At 110 bbls away into disp, slowed rate to 3 bpm w/ 450 psi
16	Land Plug	12/23/2023	08:16	7.3	3	130	445	Landed plug at 130 bbls away into disp FCP was 445 psi, Bumped plug to 1025 psi
17	Check Floats	12/23/2023	08:21					Check floats got .5 BBL back
18	Casing Test	12/23/2023	08:23				1690	20 minutes into casing test, swedge started to leak
19	Bleed Back	12/23/2023	09:15					Bleed back pressure, as swedge on cmt head was leaking and were losing psi, also had to replace a valve on pump
20	Casing Test	12/23/2023	09:27				1614	Held a 30 minute casing test
21	Rig Down	12/23/2023	10:00					ACC rigged down equipment and iron
22	Depart Location	12/23/2023	12:00					ACC departs location
23	Other	12/23/2023	12:01			30		Total CMT to Surface - 30 BBLS

Pump Diagrams



JobMaster Program Version 5.01C1
Job Number: 89689
Customer: Bayswater
Well Name: Onyx 2



Job Start: Saturday, December 23, 2023