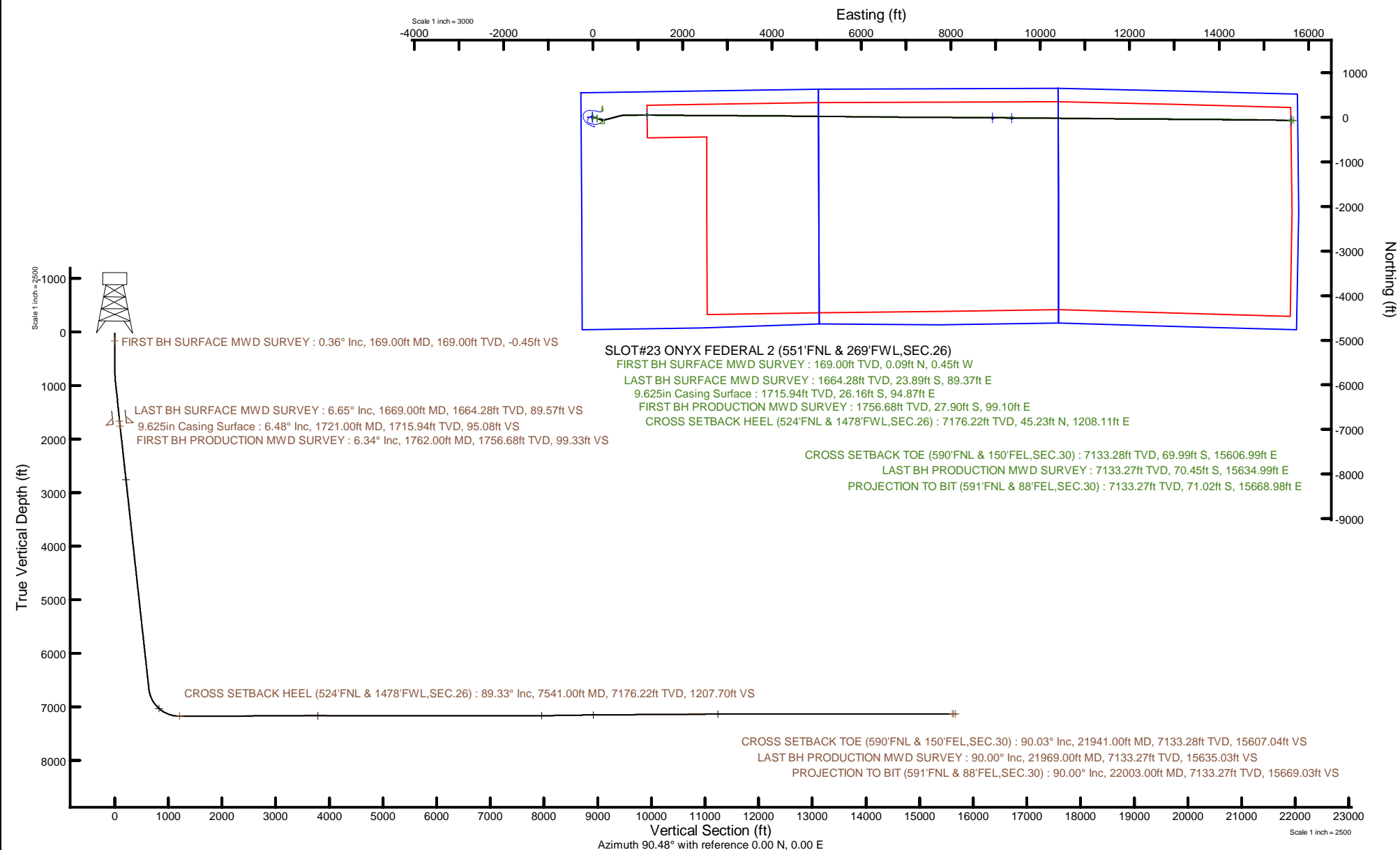


BAYSWATER E&P, LLC

Location: COLORADO Slot: SLOT#23 ONYX FEDERAL 2 (551°FNL & 269°FWL,SEC.26)
Field: WELD COUNTY (NAD83/TRUE NORTH) Well: ONYX FEDERAL 2
Facility: SEC.26-T07N-R66W Wellbore: ONYX FEDERAL 2 PWB



Plot reference wellpath is ONYX FEDERAL 2 PWP Rev-C.0	Grid System: NAD83 / Lambert Colorado SP, Northern Zone (501), US feet
True vertical depths are referenced to Ensign 153 (23) (RKB)	North Reference: True north
Reference wellpath measured depths are referenced to Ensign 153 (23) (RKB)	Scale: True distance
Ensign 153 (23) (RKB) to Mean Sea Level: 4919 feet	Coordinates are in feet referenced to Slot
Mean Sea Level to Ground level (At Slot: SLOT#23 ONYX FEDERAL 2 (551°FNL & 269°FWL,SEC.26)) : -4896 feet	Depths are in feet
Offset wellpath MDs are referenced to each path's default MD datum	Created by: painsetr on 2024-04-04; Database: WellArchitectDB





Actual Wellpath Report

ONYX FEDERAL 2 AWP

Page 1 of 9



REFERENCE WELLPATH IDENTIFICATION

Operator	BAYSWATER E&P, LLC	Well	ONYX FEDERAL 2
Field	WELD COUNTY (NAD83/TRUE NORTH)	API	0512352198
Facility	SEC.26-T07N-R66W	Wellbore	ONYX FEDERAL 2 AWB
Slot	SLOT#23 ONYX FEDERAL 2 (551'FNL & 269'FWL,SEC.26)		

REPORT SETUP INFORMATION

Projection System	NAD83 / Lambert Colorado SP, Northern Zone (501), US feet	Software System	WellArchitect® 6.0
North Reference	True	User	Painsetr
Scale	0.999971	Report Generated	4/4/2024 at 8:14:34 AM
Convergence at slot	0.48° East	Database	WellArchitectDB

WELLPATH LOCATION

	Local coordinates		Grid coordinates		Geographic coordinates	
	North[ft]	East[ft]	Easting[US ft]	Northing[US ft]	Latitude	Longitude
Slot Location	-349.90	-694.71	3207496.24	1444757.34	40.5518606°	-104.7532969°
Facility Reference Pt			3208187.94	1445113.08	40.5528210°	-104.7507970°
Field Reference Pt			3174587.00	1430859.71	40.5144139°	-104.8720750°

WELLPATH DATUM

Calculation method	Minimum curvature	Ensign 153 (23') (RKB) to Facility Vertical Datum	4919.00ft
Horizontal Reference Pt	Slot	Ensign 153 (23') (RKB) to Mean Sea Level	4919.00ft
Vertical Reference Pt	Ensign 153 (23') (RKB)	Ensign 153 (23') (RKB) to Ground Level at Slot (SLOT#23 ONYX FEDERAL 2 (551'FNL & 269'FWL,SEC.26))	23.00ft
MD Reference Pt	Ensign 153 (23') (RKB)	Section Origin	N 0.00, E 0.00 ft
Field Vertical Reference	Mean Sea Level	Section Azimuth	90.48°

REFERENCE WELLPATH IDENTIFICATION

Operator	BAYSWATER E&P, LLC	Well	ONYX FEDERAL 2
Field	WELD COUNTY (NAD83/TRUE NORTH)	API	0512352198
Facility	SEC.26-T07N-R66W	Wellbore	ONYX FEDERAL 2 AWB
Slot	SLOT#23 ONYX FEDERAL 2 (551'FNL & 269'FWL,SEC.26)		

WELLPATH DATA (249 stations) † = interpolated, ‡ = extrapolated station

MD [ft]	Inclination [°]	Azimuth [°]	TVD [ft]	Vert Sect [ft]	North [ft]	East [ft]	Grid East [US ft]	Grid North [US ft]	Latitude	Longitude	DLS ["/100ft]	Comments
0.00†	0.000	281.420	0.00	0.00	0.00	0.00	3207496.24	1444757.34	40.5518606	-104.7532969	0.00	
23.00	0.000	281.420	23.00	0.00	0.00	0.00	3207496.24	1444757.34	40.5518606	-104.7532969	0.00	
169.00	0.360	281.420	169.00	-0.45	0.09	-0.45	3207495.79	1444757.42	40.5518608	-104.7532985	0.25	FIRST BH SURFACE MWD SURVEY
230.00	0.570	268.620	230.00	-0.94	0.12	-0.94	3207495.29	1444757.45	40.5518609	-104.7533003	0.38	
323.00	0.220	65.780	323.00	-1.24	0.18	-1.24	3207494.99	1444757.51	40.5518611	-104.7533014	0.84	
413.00	0.560	82.500	412.99	-0.65	0.31	-0.65	3207495.59	1444757.64	40.5518614	-104.7532992	0.39	
503.00	0.520	77.820	502.99	0.18	0.46	0.19	3207496.42	1444757.79	40.5518618	-104.7532962	0.07	
593.00	0.590	87.790	592.99	1.05	0.56	1.05	3207497.28	1444757.91	40.5518621	-104.7532931	0.13	
683.00	0.720	79.930	682.98	2.06	0.68	2.07	3207498.30	1444758.03	40.5518624	-104.7532894	0.18	
773.00	1.830	120.090	772.96	3.87	0.05	3.87	3207500.11	1444757.42	40.5518607	-104.7532830	1.51	
862.00	3.180	111.590	861.87	7.41	-1.57	7.40	3207503.65	1444755.83	40.5518563	-104.7532703	1.57	
951.00	5.940	107.990	950.58	14.10	-3.90	14.07	3207510.34	1444753.56	40.5518499	-104.7532462	3.12	
1041.00	7.440	103.330	1039.97	24.23	-6.68	24.17	3207520.46	1444750.86	40.5518422	-104.7532099	1.77	
1131.00	6.430	103.930	1129.31	34.81	-9.24	34.73	3207531.05	1444748.39	40.5518352	-104.7531719	1.13	
1221.00	6.100	103.700	1218.77	44.37	-11.58	44.27	3207540.60	1444746.13	40.5518288	-104.7531376	0.37	
1310.00	5.820	99.760	1307.29	53.42	-13.47	53.31	3207549.66	1444744.32	40.5518236	-104.7531050	0.56	
1400.00	5.650	95.430	1396.84	62.34	-14.66	62.22	3207558.58	1444743.20	40.5518203	-104.7530730	0.52	
1490.00	5.490	108.950	1486.42	70.84	-16.48	70.70	3207567.07	1444741.46	40.5518153	-104.7530425	1.47	
1579.00	6.820	112.320	1574.90	79.78	-19.87	79.62	3207576.02	1444738.14	40.5518060	-104.7530104	1.55	
1669.00	6.650	112.540	1664.28	89.57	-23.89	89.37	3207585.81	1444734.20	40.5517950	-104.7529753	0.19	LAST BH SURFACE MWD SURVEY
1762.00	6.340	112.180	1756.68	99.33	-27.90	99.10	3207595.57	1444730.28	40.5517840	-104.7529403	0.34	FIRST BH PRODUCTION MWD SURVEY
1807.00	7.040	109.660	1801.38	104.24	-29.76	104.00	3207600.48	1444728.45	40.5517789	-104.7529226	1.69	
1897.00	6.820	109.170	1890.72	114.52	-33.37	114.24	3207610.75	1444724.93	40.5517690	-104.7528858	0.25	
1986.00	6.750	108.090	1979.10	124.51	-36.73	124.21	3207620.74	1444721.65	40.5517597	-104.7528499	0.16	
2076.00	6.900	109.000	2068.46	134.67	-40.13	134.35	3207630.91	1444718.34	40.5517504	-104.7528135	0.21	
2166.00	6.830	113.490	2157.81	144.73	-44.03	144.36	3207640.96	1444714.53	40.5517397	-104.7527774	0.60	
2256.00	6.810	112.520	2247.18	154.60	-48.20	154.20	3207650.83	1444710.44	40.5517282	-104.7527420	0.13	
2346.00	6.860	112.790	2336.54	164.52	-52.33	164.09	3207660.75	1444706.39	40.5517169	-104.7527064	0.07	
2436.00	6.880	113.100	2425.89	174.46	-56.53	174.00	3207670.70	1444702.28	40.5517054	-104.7526708	0.05	
2526.00	6.780	117.000	2515.25	184.19	-61.05	183.69	3207680.43	1444697.83	40.5516930	-104.7526359	0.53	
2615.00	6.860	114.740	2603.62	193.74	-65.66	193.20	3207689.98	1444693.31	40.5516803	-104.7526017	0.31	
2704.00	6.890	110.620	2691.98	203.60	-69.77	203.02	3207699.83	1444689.28	40.5516691	-104.7525663	0.56	
2794.00	6.900	96.740	2781.34	214.04	-72.30	213.45	3207710.28	1444686.84	40.5516621	-104.7525288	1.85	
2883.00	6.480	75.860	2869.75	224.21	-71.70	223.63	3207720.45	1444687.52	40.5516637	-104.7524922	2.76	
2973.00	6.480	74.630	2959.17	234.01	-69.12	233.45	3207730.25	1444690.19	40.5516708	-104.7524568	0.15	
3063.00	6.490	75.350	3048.60	243.81	-66.48	243.27	3207740.05	1444692.91	40.5516781	-104.7524215	0.09	
3153.00	6.440	74.890	3138.02	253.58	-63.88	253.06	3207749.82	1444695.59	40.5516852	-104.7523863	0.08	
3243.00	6.370	74.810	3227.46	263.25	-61.26	262.75	3207759.49	1444698.30	40.5516924	-104.7523514	0.08	
3333.00	6.480	74.920	3316.90	272.95	-58.63	272.47	3207769.19	1444701.01	40.5516996	-104.7523164	0.12	
3427.00	6.310	75.930	3410.31	283.06	-55.99	282.61	3207779.29	1444703.73	40.5517069	-104.7522799	0.22	
3516.00	6.470	75.310	3498.76	292.63	-53.53	292.20	3207788.87	1444706.27	40.5517136	-104.7522454	0.20	
3606.00	6.340	75.530	3588.20	302.33	-51.01	301.92	3207798.56	1444708.88	40.5517205	-104.7522104	0.15	
3696.00	6.370	75.260	3677.64	311.95	-48.49	311.56	3207808.18	1444711.47	40.5517274	-104.7521758	0.05	
3785.00	6.380	75.500	3766.09	321.49	-46.00	321.12	3207817.72	1444714.05	40.5517343	-104.7521414	0.03	
3874.00	6.360	75.040	3854.54	331.02	-43.49	330.67	3207827.25	1444716.64	40.5517412	-104.7521070	0.06	

REFERENCE WELLPATH IDENTIFICATION

Operator	BAYSWATER E&P, LLC	Well	ONYX FEDERAL 2
Field	WELD COUNTY (NAD83/TRUE NORTH)	API	0512352198
Facility	SEC.26-T07N-R66W	Wellbore	ONYX FEDERAL 2 AWB
Slot	SLOT#23 ONYX FEDERAL 2 (551'FNL & 269'FWL,SEC.26)		

WELLPATH DATA (249 stations) † = interpolated, ‡ = extrapolated station

MD [ft]	Inclination [°]	Azimuth [°]	TVD [ft]	Vert Sect [ft]	North [ft]	East [ft]	Grid East [US ft]	Grid North [US ft]	Latitude	Longitude	DLS [°/100ft]	Comments
3964.00	6.440	74.450	3943.98	340.67	-40.85	340.35	3207836.91	1444719.36	40.5517484	-104.7520722	0.12	
4054.00	6.460	75.680	4033.41	350.42	-38.24	350.12	3207846.65	1444722.05	40.5517556	-104.7520370	0.16	
4143.00	6.350	74.720	4121.86	360.00	-35.71	359.71	3207856.23	1444724.66	40.5517625	-104.7520025	0.17	
4233.00	6.330	74.870	4211.31	369.57	-33.10	369.31	3207865.80	1444727.35	40.5517697	-104.7519680	0.03	
4322.00	6.370	74.970	4299.76	379.05	-30.54	378.81	3207875.28	1444729.99	40.5517767	-104.7519338	0.05	
4412.00	6.350	75.250	4389.21	388.66	-27.98	388.44	3207884.89	1444732.63	40.5517838	-104.7518991	0.04	
4502.00	6.260	74.870	4478.66	398.19	-25.43	397.99	3207894.42	1444735.26	40.5517907	-104.7518647	0.11	
4592.00	6.440	74.880	4568.11	407.78	-22.83	407.60	3207904.01	1444737.94	40.5517979	-104.7518301	0.20	
4682.00	6.350	74.970	4657.55	417.44	-20.23	417.28	3207913.66	1444740.63	40.5518050	-104.7517953	0.10	
4771.00	6.510	75.080	4745.99	427.04	-17.65	426.91	3207923.27	1444743.28	40.5518121	-104.7517607	0.18	
4860.00	6.380	75.150	4834.43	436.68	-15.08	436.57	3207932.90	1444745.93	40.5518191	-104.7517259	0.15	
4949.00	6.450	74.710	4922.87	446.26	-12.50	446.17	3207942.48	1444748.60	40.5518262	-104.7516914	0.10	
5039.00	6.400	75.550	5012.31	455.97	-9.91	455.90	3207952.19	1444751.26	40.5518333	-104.7516563	0.12	
5128.00	6.450	75.210	5100.75	465.58	-7.40	465.54	3207961.81	1444753.86	40.5518402	-104.7516217	0.07	
5308.00	6.370	74.660	5279.62	484.95	-2.18	484.94	3207981.17	1444759.24	40.5518546	-104.7515518	0.06	
5398.00	6.390	75.500	5369.06	494.59	0.40	494.61	3207990.81	1444761.90	40.5518616	-104.7515171	0.11	
5487.00	6.200	75.290	5457.53	504.01	2.86	504.05	3208000.23	1444764.44	40.5518684	-104.7514831	0.22	
5576.00	6.480	75.460	5545.98	513.50	5.34	513.56	3208009.72	1444767.00	40.5518752	-104.7514489	0.32	
5666.00	6.450	75.500	5635.41	523.29	7.88	523.37	3208019.51	1444769.62	40.5518822	-104.7514136	0.03	
5756.00	6.570	71.840	5724.83	533.05	10.75	533.16	3208029.27	1444772.58	40.5518900	-104.7513783	0.48	
5845.00	6.630	74.840	5813.24	542.82	13.68	542.95	3208039.04	1444775.59	40.5518981	-104.7513431	0.39	
5934.00	6.470	75.990	5901.66	552.62	16.24	552.78	3208048.84	1444778.23	40.5519051	-104.7513077	0.23	
6024.00	6.480	76.290	5991.09	562.46	18.67	562.63	3208058.67	1444780.74	40.5519118	-104.7512723	0.04	
6114.00	6.470	74.490	6080.51	572.26	21.23	572.45	3208068.47	1444783.39	40.5519188	-104.7512369	0.23	
6203.00	6.420	75.520	6168.95	581.88	23.81	582.10	3208078.10	1444786.05	40.5519259	-104.7512022	0.14	
6293.00	6.490	75.570	6258.38	591.66	26.34	591.90	3208087.87	1444788.66	40.5519328	-104.7511670	0.08	
6382.00	6.420	75.680	6346.81	601.33	28.82	601.59	3208097.55	1444791.23	40.5519397	-104.7511321	0.08	
6471.00	6.430	76.470	6435.26	610.98	31.22	611.26	3208107.19	1444793.70	40.5519462	-104.7510973	0.10	
6561.00	6.420	76.140	6524.69	620.74	33.60	621.04	3208116.95	1444796.17	40.5519528	-104.7510621	0.04	
6651.00	6.310	76.000	6614.14	630.41	36.01	630.73	3208126.62	1444798.65	40.5519594	-104.7510272	0.12	
6740.00	9.630	83.010	6702.27	642.53	38.10	642.87	3208138.74	1444800.84	40.5519651	-104.7509835	3.88	
6830.00	18.980	88.110	6789.38	664.66	39.50	665.01	3208160.87	1444802.43	40.5519689	-104.7509038	10.47	
6920.00	27.830	88.900	6871.89	700.36	40.39	700.72	3208196.57	1444803.62	40.5519714	-104.7507754	9.84	
7009.00	36.830	90.000	6947.02	747.90	40.79	748.26	3208244.11	1444804.42	40.5519725	-104.7506043	10.13	
7099.00	46.080	89.000	7014.40	807.40	41.35	807.78	3208303.61	1444805.49	40.5519740	-104.7503901	10.30	
7189.00	55.250	89.770	7071.39	876.93	42.07	877.31	3208373.13	1444806.79	40.5519760	-104.7501399	10.21	
7279.00	64.470	89.910	7116.53	954.67	42.28	955.06	3208450.87	1444807.66	40.5519766	-104.7498601	10.25	
7369.00	73.100	88.890	7149.07	1038.48	43.18	1038.87	3208534.67	1444809.26	40.5519790	-104.7495585	9.65	
7459.00	80.940	88.840	7169.27	1126.07	44.92	1126.49	3208622.27	1444811.74	40.5519838	-104.7492432	8.71	
7541.00†	89.329	90.716	7176.22	1207.70	45.23	1208.11	3208703.89	1444812.73	40.5519846	-104.7489495	10.48	CROSS SETBACK HEEL (524'FNL & 1478'FWL,SEC.26)
7550.00	90.250	90.920	7176.25	1216.70	45.10	1217.11	3208712.89	1444812.68	40.5519843	-104.7489171	10.48	
7639.00	90.120	90.880	7175.96	1305.69	43.70	1306.10	3208801.88	1444812.03	40.5519804	-104.7485969	0.15	
7729.00	90.060	90.850	7175.82	1395.69	42.34	1396.09	3208891.88	1444811.43	40.5519767	-104.7482731	0.07	
7819.00	90.120	90.810	7175.68	1485.69	41.04	1486.08	3208981.87	1444810.88	40.5519731	-104.7479493	0.08	
7909.00	90.000	90.770	7175.59	1575.69	39.80	1576.07	3209071.87	1444810.40	40.5519696	-104.7476254	0.14	

REFERENCE WELLPATH IDENTIFICATION

Operator	BAYSWATER E&P, LLC	Well	ONYX FEDERAL 2
Field	WELD COUNTY (NAD83/TRUE NORTH)	API	0512352198
Facility	SEC.26-T07N-R66W	Wellbore	ONYX FEDERAL 2 AWB
Slot	SLOT#23 ONYX FEDERAL 2 (551'FNL & 269'FWL,SEC.26)		

WELLPATH DATA (249 stations)

MD [ft]	Inclination [°]	Azimuth [°]	TVD [ft]	Vert Sect [ft]	North [ft]	East [ft]	Grid East [US ft]	Grid North [US ft]	Latitude	Longitude	DLS [°/100ft]	Comments
7999.00	89.910	90.830	7175.66	1665.69	38.54	1666.06	3209161.86	1444809.90	40.5519662	-104.7473016	0.12	
8089.00	90.030	90.780	7175.70	1755.68	37.27	1756.05	3209251.86	1444809.40	40.5519627	-104.7469778	0.14	
8179.00	90.030	90.860	7175.66	1845.68	35.99	1846.04	3209341.86	1444808.87	40.5519591	-104.7466539	0.09	
8268.00	90.090	90.880	7175.56	1934.68	34.64	1935.03	3209430.85	1444808.26	40.5519554	-104.7463337	0.07	
8357.00	90.090	90.790	7175.42	2023.68	33.34	2024.03	3209519.85	1444807.72	40.5519518	-104.7460135	0.10	
8447.00	90.250	89.850	7175.16	2113.68	32.84	2114.02	3209609.84	1444807.97	40.5519504	-104.7456896	1.06	
8536.00	90.280	89.940	7174.74	2202.67	33.00	2203.02	3209698.83	1444808.88	40.5519509	-104.7453694	0.11	
8626.00	90.250	89.850	7174.33	2292.67	33.16	2293.02	3209788.82	1444809.81	40.5519513	-104.7450455	0.11	
8715.00	90.310	89.950	7173.89	2381.66	33.32	2382.02	3209877.82	1444810.71	40.5519517	-104.7447252	0.13	
8805.00	90.280	90.190	7173.43	2471.66	33.21	2472.02	3209967.81	1444811.36	40.5519514	-104.7444014	0.27	
8894.00	90.310	90.200	7172.97	2560.65	32.91	2561.02	3210056.80	1444811.81	40.5519505	-104.7440811	0.04	
8984.00	90.340	90.040	7172.46	2650.65	32.72	2651.01	3210146.80	1444812.38	40.5519500	-104.7437573	0.18	
9073.00	90.180	90.000	7172.06	2739.65	32.69	2740.01	3210235.79	1444813.09	40.5519499	-104.7434370	0.19	
9163.00	90.490	90.010	7171.53	2829.64	32.68	2830.01	3210325.78	1444813.84	40.5519498	-104.7431131	0.34	
9252.00	90.400	89.960	7170.84	2918.64	32.70	2919.01	3210414.77	1444814.62	40.5519498	-104.7427929	0.12	
9342.00	90.370	89.890	7170.23	3008.63	32.82	3009.01	3210504.77	1444815.49	40.5519501	-104.7424690	0.08	
9432.00	90.370	89.940	7169.65	3098.62	32.95	3099.00	3210594.76	1444816.38	40.5519505	-104.7421452	0.06	
9522.00	90.370	89.950	7169.07	3188.62	33.04	3189.00	3210684.75	1444817.23	40.5519507	-104.7418213	0.01	
9611.00	90.340	89.960	7168.52	3277.61	33.11	3278.00	3210773.74	1444818.05	40.5519508	-104.7415011	0.04	
9701.00	90.830	89.840	7167.60	3367.60	33.27	3368.00	3210863.73	1444818.96	40.5519512	-104.7411772	0.56	
9790.00	91.080	89.900	7166.12	3456.59	33.47	3456.98	3210952.71	1444819.91	40.5519518	-104.7408570	0.29	
9879.00	90.220	90.090	7165.11	3545.58	33.48	3545.98	3211041.69	1444820.67	40.5519517	-104.7405367	0.99	
9969.00	90.370	90.280	7164.65	3635.57	33.19	3635.97	3211131.69	1444821.14	40.5519509	-104.7402129	0.27	
10058.00	89.970	89.940	7164.38	3724.57	33.01	3724.97	3211220.68	1444821.72	40.5519504	-104.7398926	0.59	
10148.00	89.630	90.010	7164.70	3814.57	33.05	3814.97	3211310.68	1444822.51	40.5519505	-104.7395688	0.39	
10237.00	89.720	89.900	7165.20	3903.56	33.12	3903.97	3211399.67	1444823.33	40.5519506	-104.7392485	0.16	
10327.00	89.570	89.780	7165.76	3993.55	33.38	3993.97	3211489.66	1444824.34	40.5519513	-104.7389247	0.21	
10416.00	89.690	89.950	7166.33	4082.55	33.58	4082.97	3211578.65	1444825.30	40.5519518	-104.7386044	0.23	
10506.00	89.720	89.960	7166.80	4172.54	33.66	4172.97	3211668.64	1444826.13	40.5519520	-104.7382805	0.04	
10596.00	89.660	90.680	7167.28	4262.54	33.15	4262.96	3211758.64	1444826.38	40.5519505	-104.7379567	0.80	
10685.00	89.630	90.910	7167.83	4351.54	31.92	4351.95	3211847.63	1444825.90	40.5519471	-104.7376365	0.26	
10774.00	89.750	90.780	7168.32	4440.53	30.61	4440.94	3211936.62	1444825.34	40.5519435	-104.7373162	0.20	
10863.00	89.820	90.790	7168.65	4529.53	29.39	4529.93	3212025.62	1444824.87	40.5519401	-104.7369960	0.08	
10953.00	90.120	90.870	7168.70	4619.53	28.08	4619.92	3212115.61	1444824.32	40.5519364	-104.7366722	0.34	
11043.00	90.060	90.700	7168.56	4709.53	26.85	4709.91	3212205.61	1444823.84	40.5519330	-104.7363483	0.20	
11132.00	90.000	90.790	7168.51	4798.53	25.69	4798.91	3212294.61	1444823.44	40.5519298	-104.7360281	0.12	
11221.00	90.000	90.700	7168.51	4887.53	24.54	4887.90	3212383.60	1444823.03	40.5519266	-104.7357079	0.10	
11311.00	90.120	90.810	7168.42	4977.53	23.35	4977.89	3212473.60	1444822.60	40.5519233	-104.7353840	0.18	
11400.00	90.090	90.880	7168.25	5066.52	22.04	5066.88	3212562.59	1444822.04	40.5519196	-104.7350638	0.09	
11490.00	90.030	90.610	7168.16	5156.52	20.87	5156.87	3212652.59	1444821.63	40.5519163	-104.7347400	0.31	
11579.00	90.030	90.780	7168.11	5245.52	19.79	5245.87	3212741.59	1444821.30	40.5519133	-104.7344197	0.19	
11668.00	90.090	90.800	7168.02	5334.52	18.56	5334.86	3212830.58	1444820.82	40.5519099	-104.7340995	0.07	
11758.00	90.150	90.900	7167.83	5424.52	17.22	5424.85	3212920.58	1444820.24	40.5519062	-104.7337757	0.13	
11848.00	90.120	90.740	7167.62	5514.52	15.94	5514.84	3213010.57	1444819.71	40.5519026	-104.7334518	0.18	
11938.00	90.090	90.880	7167.45	5604.51	14.66	5604.83	3213100.57	1444819.20	40.5518991	-104.7331280	0.16	

REFERENCE WELLPATH IDENTIFICATION

Operator	BAYSWATER E&P, LLC	Well	ONYX FEDERAL 2
Field	WELD COUNTY (NAD83/TRUE NORTH)	API	0512352198
Facility	SEC.26-T07N-R66W	Wellbore	ONYX FEDERAL 2 AWB
Slot	SLOT#23 ONYX FEDERAL 2 (551'FNL & 269'FWL,SEC.26)		

WELLPATH DATA (249 stations)

MD [ft]	Inclination [°]	Azimuth [°]	TVD [ft]	Vert Sect [ft]	North [ft]	East [ft]	Grid East [US ft]	Grid North [US ft]	Latitude	Longitude	DLS ["/100ft]	Comments
12028.00	90.120	90.660	7167.29	5694.51	13.45	5694.82	3213190.56	1444818.74	40.5518957	-104.7328042	0.25	
12117.00	90.150	90.690	7167.08	5783.51	12.41	5783.82	3213279.56	1444818.44	40.5518927	-104.7324839	0.05	
12207.00	90.220	90.920	7166.79	5873.51	11.14	5873.81	3213369.56	1444817.94	40.5518892	-104.7321601	0.27	
12296.00	89.820	90.970	7166.76	5962.51	9.67	5962.79	3213458.55	1444817.22	40.5518851	-104.7318399	0.45	
12386.00	89.880	91.000	7166.99	6052.50	8.13	6052.78	3213548.54	1444816.43	40.5518808	-104.7315161	0.07	
12476.00	89.880	90.920	7167.18	6142.50	6.62	6142.77	3213638.54	1444815.68	40.5518766	-104.7311923	0.09	
12564.00	90.120	91.130	7167.18	6230.50	5.04	6230.75	3213726.53	1444814.85	40.5518722	-104.7308757	0.36	
12654.00	90.030	90.890	7167.06	6320.49	3.46	6320.74	3213816.52	1444814.02	40.5518678	-104.7305518	0.28	
12744.00	90.090	90.580	7166.97	6410.49	2.30	6410.73	3213906.52	1444813.62	40.5518646	-104.7302280	0.35	
12833.00	90.120	90.900	7166.81	6499.49	1.15	6499.72	3213995.52	1444813.22	40.5518614	-104.7299078	0.36	
12922.00	90.000	90.720	7166.71	6588.49	-0.10	6588.71	3214084.51	1444812.71	40.5518579	-104.7295875	0.24	
13011.00	89.780	90.580	7166.88	6677.49	-1.11	6677.71	3214173.51	1444812.45	40.5518550	-104.7292673	0.29	
13101.00	89.940	90.710	7167.10	6767.49	-2.13	6767.70	3214263.50	1444812.20	40.5518522	-104.7289435	0.23	
13190.00	89.910	90.680	7167.22	6856.49	-3.21	6856.70	3214352.50	1444811.87	40.5518491	-104.7286232	0.05	
13279.00	89.910	89.950	7167.36	6945.48	-3.70	6945.69	3214441.50	1444812.13	40.5518477	-104.7283030	0.82	
13369.00	90.000	89.900	7167.43	7035.48	-3.58	7035.69	3214531.49	1444813.00	40.5518480	-104.7279791	0.11	
13458.00	89.910	89.880	7167.50	7124.48	-3.41	7124.69	3214620.48	1444813.92	40.5518484	-104.7276588	0.10	
13548.00	89.910	89.760	7167.64	7214.47	-3.12	7214.69	3214710.47	1444814.96	40.5518491	-104.7273350	0.13	
13638.00	89.940	90.030	7167.76	7304.47	-2.96	7304.69	3214800.47	1444815.89	40.5518495	-104.7270111	0.30	
13727.00	89.970	89.810	7167.83	7393.46	-2.83	7393.69	3214889.46	1444816.76	40.5518497	-104.7266908	0.25	
13817.00	90.000	89.800	7167.85	7483.45	-2.53	7483.69	3214979.45	1444817.82	40.5518505	-104.7263670	0.04	
13906.00	89.880	89.760	7167.95	7572.45	-2.19	7572.69	3215068.44	1444818.92	40.5518514	-104.7260467	0.14	
13995.00	90.000	91.260	7168.04	7661.45	-2.98	7661.69	3215157.43	1444818.87	40.5518491	-104.7257265	1.69	
14085.00	90.090	89.910	7167.97	7751.44	-3.90	7751.68	3215247.43	1444818.71	40.5518465	-104.7254026	1.50	
14175.00	89.940	89.870	7167.94	7841.44	-3.72	7841.68	3215337.42	1444819.64	40.5518469	-104.7250788	0.17	
14264.00	89.850	89.870	7168.11	7930.43	-3.52	7930.68	3215426.41	1444820.59	40.5518474	-104.7247585	0.10	
14354.00	90.860	89.990	7167.55	8020.43	-3.41	8020.67	3215516.40	1444821.46	40.5518476	-104.7244347	1.13	
14444.00	90.890	90.060	7166.18	8110.41	-3.45	8110.66	3215606.39	1444822.18	40.5518474	-104.7241108	0.08	
14533.00	90.800	89.890	7164.86	8199.40	-3.41	8199.65	3215695.37	1444822.97	40.5518474	-104.7237906	0.22	
14623.00	90.890	89.950	7163.54	8289.39	-3.29	8289.64	3215785.36	1444823.85	40.5518477	-104.7234668	0.12	
14712.00	90.860	89.910	7162.18	8378.37	-3.18	8378.63	3215874.34	1444824.71	40.5518479	-104.7231466	0.06	
14802.00	90.890	89.830	7160.80	8468.36	-2.97	8468.62	3215964.32	1444825.67	40.5518484	-104.7228227	0.09	
14891.00	90.860	89.730	7159.44	8557.34	-2.63	8557.61	3216053.30	1444826.76	40.5518492	-104.7225025	0.12	
14981.00	90.830	89.810	7158.12	8647.32	-2.27	8647.60	3216143.28	1444827.88	40.5518502	-104.7221787	0.09	
15071.00	90.830	89.820	7156.81	8737.31	-1.98	8737.59	3216233.26	1444828.93	40.5518509	-104.7218549	0.01	
15160.00	90.860	89.820	7155.50	8826.29	-1.70	8826.58	3216322.24	1444829.96	40.5518515	-104.7215346	0.03	
15250.00	90.430	90.780	7154.49	8916.28	-2.17	8916.57	3216412.23	1444830.25	40.5518502	-104.7212108	1.17	
15339.00	90.430	90.540	7153.82	9005.28	-3.20	9005.57	3216501.23	1444829.97	40.5518473	-104.7208906	0.27	
15429.00	90.460	90.690	7153.12	9095.28	-4.16	9095.56	3216591.22	1444829.76	40.5518445	-104.7205667	0.17	
15518.00	90.430	90.520	7152.43	9184.28	-5.10	9184.55	3216680.22	1444829.57	40.5518418	-104.7202465	0.19	
15607.00	90.460	90.570	7151.74	9273.27	-5.95	9273.54	3216769.21	1444829.47	40.5518394	-104.7199262	0.07	
15696.00	90.430	90.620	7151.05	9362.27	-6.87	9362.54	3216858.20	1444829.30	40.5518368	-104.7196060	0.07	
15786.00	90.430	90.690	7150.37	9452.27	-7.90	9452.53	3216948.20	1444829.03	40.5518339	-104.7192822	0.08	
15875.00	90.430	90.730	7149.70	9541.26	-9.01	9541.52	3217037.19	1444828.67	40.5518308	-104.7189620	0.04	
15965.00	90.430	90.650	7149.03	9631.26	-10.09	9631.51	3217127.19	1444828.35	40.5518277	-104.7186381	0.09	

REFERENCE WELLPATH IDENTIFICATION

Operator	BAYSWATER E&P, LLC	Well	ONYX FEDERAL 2
Field	WELD COUNTY (NAD83/TRUE NORTH)	API	0512352198
Facility	SEC.26-T07N-R66W	Wellbore	ONYX FEDERAL 2 AWB
Slot	SLOT#23 ONYX FEDERAL 2 (551'FNL & 269'FWL,SEC.26)		

WELLPATH DATA (249 stations)

MD [ft]	Inclination [°]	Azimuth [°]	TVD [ft]	Vert Sect [ft]	North [ft]	East [ft]	Grid East [US ft]	Grid North [US ft]	Latitude	Longitude	DLS [°/100ft]	Comments
16054.00	90.430	90.630	7148.36	9720.26	-11.08	9720.50	3217216.18	1444828.10	40.5518249	-104.7183179	0.02	
16144.00	90.520	90.740	7147.61	9810.25	-12.16	9810.49	3217306.17	1444827.79	40.5518218	-104.7179941	0.16	
16234.00	90.460	90.660	7146.84	9900.25	-13.26	9900.48	3217396.17	1444827.44	40.5518187	-104.7176702	0.11	
16324.00	90.460	90.810	7146.12	9990.25	-14.41	9990.47	3217486.16	1444827.05	40.5518154	-104.7173464	0.17	
16413.00	90.550	90.760	7145.34	10079.24	-15.63	10079.46	3217575.15	1444826.58	40.5518120	-104.7170262	0.12	
16503.00	90.460	90.650	7144.54	10169.24	-16.74	10169.45	3217665.15	1444826.23	40.5518088	-104.7167024	0.16	
16592.00	90.430	90.650	7143.85	10258.23	-17.75	10258.44	3217754.14	1444825.97	40.5518060	-104.7163821	0.03	
16682.00	90.490	90.830	7143.13	10348.23	-18.91	10348.43	3217844.13	1444825.56	40.5518027	-104.7160583	0.21	
16772.00	90.490	90.670	7142.36	10438.23	-20.09	10438.42	3217934.13	1444825.14	40.5517993	-104.7157345	0.18	
16862.00	90.460	90.410	7141.61	10528.22	-20.94	10528.41	3218024.12	1444825.05	40.5517969	-104.7154107	0.29	
16952.00	90.460	90.770	7140.89	10618.22	-21.87	10618.40	3218114.11	1444824.88	40.5517943	-104.7150868	0.40	
17041.00	90.430	90.730	7140.20	10707.22	-23.03	10707.39	3218203.11	1444824.47	40.5517910	-104.7147666	0.06	
17131.00	90.370	90.560	7139.57	10797.21	-24.04	10797.39	3218293.10	1444824.21	40.5517881	-104.7144428	0.20	
17221.00	90.400	90.480	7138.97	10887.21	-24.86	10887.38	3218383.10	1444824.15	40.5517857	-104.7141189	0.09	
17310.00	90.520	90.750	7138.25	10976.21	-25.82	10976.37	3218472.09	1444823.95	40.5517830	-104.7137987	0.33	
17399.00	90.430	90.490	7137.51	11065.20	-26.78	11065.36	3218561.09	1444823.73	40.5517802	-104.7134785	0.31	
17488.00	90.490	90.760	7136.80	11154.20	-27.75	11154.35	3218650.08	1444823.51	40.5517775	-104.7131582	0.31	
17577.00	90.460	90.670	7136.06	11243.20	-28.86	11243.34	3218739.07	1444823.15	40.5517743	-104.7128380	0.11	
17667.00	90.000	90.740	7135.70	11333.19	-29.97	11333.34	3218829.07	1444822.80	40.5517711	-104.7125142	0.52	
17757.00	89.970	90.660	7135.72	11423.19	-31.07	11423.33	3218919.07	1444822.46	40.5517680	-104.7121903	0.09	
17846.00	90.030	90.730	7135.72	11512.19	-32.15	11512.32	3219008.06	1444822.13	40.5517649	-104.7118701	0.10	
17936.00	90.000	90.740	7135.70	11602.19	-33.30	11602.32	3219098.06	1444821.73	40.5517617	-104.7115463	0.04	
18026.00	90.030	90.480	7135.68	11692.19	-34.26	11692.31	3219188.06	1444821.53	40.5517589	-104.7112224	0.29	
18117.00	89.970	89.820	7135.68	11783.19	-34.50	11783.31	3219279.05	1444822.06	40.5517581	-104.7108950	0.73	
18206.00	90.000	89.760	7135.70	11872.18	-34.17	11872.31	3219368.04	1444823.14	40.5517589	-104.7105747	0.08	
18293.00	90.000	89.850	7135.70	11959.18	-33.88	11959.31	3219455.03	1444824.17	40.5517596	-104.7102616	0.10	
18384.00	90.000	89.770	7135.70	12050.17	-33.57	12050.31	3219546.02	1444825.23	40.5517603	-104.7099342	0.09	
18474.00	90.030	89.840	7135.68	12140.17	-33.27	12140.31	3219636.01	1444826.30	40.5517610	-104.7096103	0.08	
18563.00	90.030	90.010	7135.63	12229.16	-33.15	12229.31	3219725.01	1444827.16	40.5517612	-104.7092900	0.19	
18653.00	89.970	89.740	7135.63	12319.16	-32.95	12319.31	3219815.00	1444828.12	40.5517616	-104.7089662	0.31	
18743.00	90.000	89.770	7135.65	12409.15	-32.57	12409.31	3219904.99	1444829.26	40.5517626	-104.7086423	0.05	
18833.00	89.970	89.900	7135.68	12499.14	-32.31	12499.31	3219994.98	1444830.28	40.5517632	-104.7083185	0.15	
18922.00	90.030	90.760	7135.68	12588.14	-32.82	12588.30	3220083.98	1444830.51	40.5517616	-104.7079982	0.97	
19012.00	90.000	90.740	7135.65	12678.14	-34.00	12678.30	3220173.97	1444830.09	40.5517583	-104.7076744	0.04	
19102.00	90.030	90.820	7135.63	12768.14	-35.23	12768.29	3220263.97	1444829.63	40.5517548	-104.7073505	0.09	
19192.00	89.940	90.550	7135.65	12858.14	-36.30	12858.28	3220353.96	1444829.31	40.5517517	-104.7070267	0.32	
19282.00	90.060	90.910	7135.65	12948.14	-37.45	12948.27	3220443.96	1444828.92	40.5517484	-104.7067029	0.42	
19371.00	90.120	90.770	7135.51	13037.14	-38.75	13037.26	3220532.96	1444828.36	40.5517447	-104.7063826	0.17	
19461.00	90.590	90.790	7134.96	13127.13	-39.98	13127.25	3220622.95	1444827.90	40.5517412	-104.7060588	0.52	
19551.00	89.880	90.020	7134.59	13217.13	-40.61	13217.25	3220712.95	1444828.02	40.5517393	-104.7057350	1.16	
19641.00	89.910	89.870	7134.75	13307.13	-40.53	13307.25	3220802.94	1444828.86	40.5517395	-104.7054111	0.17	
19731.00	89.820	90.010	7134.96	13397.12	-40.43	13397.25	3220892.93	1444829.72	40.5517396	-104.7050873	0.18	
19820.00	89.880	89.920	7135.20	13486.12	-40.38	13486.25	3220981.92	1444830.52	40.5517396	-104.7047670	0.12	
19910.00	89.850	89.990	7135.41	13576.12	-40.31	13576.25	3221071.92	1444831.35	40.5517396	-104.7044431	0.08	
20000.00	89.850	89.930	7135.64	13666.11	-40.25	13666.25	3221161.91	1444832.17	40.5517397	-104.7041193	0.07	

Actual Wellpath Report

ONYX FEDERAL 2 AWP

Page 7 of 9

REFERENCE WELLPATH IDENTIFICATION

Operator	BAYSWATER E&P, LLC	Well	ONYX FEDERAL 2
Field	WELD COUNTY (NAD83/TRUE NORTH)	API	0512352198
Facility	SEC.26-T07N-R66W	Wellbore	ONYX FEDERAL 2 AWB
Slot	SLOT#23 ONYX FEDERAL 2 (551'FNL & 269'FWL,SEC.26)		

WELLPATH DATA (249 stations) † = interpolated, ‡ = extrapolated station

MD [ft]	Inclination [°]	Azimuth [°]	TVD [ft]	Vert Sect [ft]	North [ft]	East [ft]	Grid East [US ft]	Grid North [US ft]	Latitude	Longitude	DLS ["/100ft]	Comments
20089.00	89.820	89.900	7135.90	13755.11	-40.11	13755.25	3221250.90	1444833.05	40.5517399	-104.7037990	0.05	
20178.00	89.880	91.000	7136.13	13844.10	-40.81	13844.24	3221339.90	1444833.10	40.5517379	-104.7034788	1.24	
20267.00	89.910	90.990	7136.30	13933.10	-42.36	13933.23	3221428.89	1444832.30	40.5517335	-104.7031585	0.04	
20357.00	89.850	90.810	7136.49	14023.10	-43.77	14023.22	3221518.89	1444831.65	40.5517295	-104.7028347	0.21	
20446.00	89.850	90.970	7136.72	14112.10	-45.15	14112.21	3221607.88	1444831.02	40.5517255	-104.7025145	0.18	
20535.00	89.850	90.890	7136.95	14201.09	-46.60	14201.20	3221696.88	1444830.32	40.5517214	-104.7021943	0.09	
20625.00	89.850	90.990	7137.19	14291.09	-48.08	14291.18	3221786.87	1444829.60	40.5517172	-104.7018705	0.11	
20714.00	90.220	90.900	7137.13	14380.09	-49.54	14380.17	3221875.86	1444828.88	40.5517131	-104.7015503	0.43	
20804.00	90.280	91.010	7136.74	14470.08	-51.04	14470.16	3221965.86	1444828.14	40.5517088	-104.7012264	0.14	
20894.00	90.180	90.920	7136.38	14560.08	-52.56	14560.14	3222055.85	1444827.38	40.5517045	-104.7009026	0.15	
20983.00	90.180	91.070	7136.10	14649.07	-54.10	14649.13	3222144.84	1444826.59	40.5517001	-104.7005824	0.17	
21073.00	90.220	90.920	7135.79	14739.07	-55.67	14739.12	3222234.84	1444825.78	40.5516957	-104.7002586	0.17	
21163.00	90.180	90.900	7135.47	14829.07	-57.10	14829.10	3222324.83	1444825.11	40.5516916	-104.6999348	0.05	
21252.00	90.180	90.910	7135.19	14918.06	-58.50	14918.09	3222413.82	1444824.45	40.5516876	-104.6996146	0.01	
21342.00	90.220	90.930	7134.88	15008.06	-59.95	15008.08	3222503.82	1444823.77	40.5516835	-104.6992908	0.05	
21431.00	90.340	90.950	7134.44	15097.06	-61.41	15097.07	3222592.81	1444823.06	40.5516793	-104.6989706	0.14	
21521.00	90.250	91.000	7133.98	15187.05	-62.94	15187.05	3222682.80	1444822.28	40.5516750	-104.6986467	0.11	
21610.00	90.180	90.990	7133.65	15276.05	-64.48	15276.04	3222771.80	1444821.49	40.5516706	-104.6983265	0.08	
21700.00	90.060	91.020	7133.46	15366.04	-66.06	15366.02	3222861.79	1444820.67	40.5516661	-104.6980027	0.14	
21790.00	90.000	90.860	7133.41	15456.04	-67.54	15456.01	3222951.79	1444819.95	40.5516619	-104.6976789	0.19	
21879.00	90.090	90.960	7133.34	15545.04	-68.95	15545.00	3223040.78	1444819.28	40.5516578	-104.6973587	0.15	
21941.00†	90.028	90.953	7133.28	15607.04	-69.99	15606.99	3223102.78	1444818.77	40.5516549	-104.6971356	0.10	CROSS SETBACK TOE (590'FNL & 150'FEL,SEC.30)
21969.00	90.000	90.950	7133.27	15635.03	-70.45	15634.99	3223130.77	1444818.54	40.5516536	-104.6970349	0.10	LAST BH PRODUCTION MWD SURVEY
22003.00‡	90.000	90.950	7133.27	15669.03	-71.02	15668.98	3223164.77	1444818.26	40.5516520	-104.6969125	0.00	PROJECTION TO BIT (591'FNL & 88'FEL,SEC.30)

HOLE & CASING SECTIONS - Ref Wellbore: ONYX FEDERAL 2 AWB Ref Wellpath: ONYX FEDERAL 2 AWP

String/Diameter	Start MD [ft]	End MD [ft]	Interval [ft]	Start TVD [ft]	End TVD [ft]	Start N/S [ft]	Start E/W [ft]	End N/S [ft]	End E/W [ft]
9.625in Casing Surface	23.00	1721.00	1698.00	23.00	1715.94	0.00	0.00	-26.16	94.87

REFERENCE WELLPATH IDENTIFICATION

Operator	BAYSWATER E&P, LLC	Well	ONYX FEDERAL 2
Field	WELD COUNTY (NAD83/TRUE NORTH)	API	0512352198
Facility	SEC.26-T07N-R66W	Wellbore	ONYX FEDERAL 2 AWB
Slot	SLOT#23 ONYX FEDERAL 2 (551'FNL & 269'FWL,SEC.26)		

TARGETS

Name	TVD [ft]	North [ft]	East [ft]	Grid East [US ft]	Grid North [US ft]	Latitude	Longitude	Shape
SEC.25-T07N-R66W	-4.00	0.16	-14.76	3207481.48	1444757.38	40.5518610	-104.7533500	polygon
	2D Polygon: dimensions not calculated							
SEC.26-T07N-R66W	-4.00	0.16	-14.76	3207481.48	1444757.38	40.5518610	-104.7533500	polygon
	2D Polygon: dimensions not calculated							
SEC.30-T07N-R65W	-4.00	0.16	-14.76	3207481.48	1444757.38	40.5518610	-104.7533500	polygon
	2D Polygon: dimensions not calculated							
ONYX FEDERAL DSU BOUNDARY	0.00	0.02	-14.87	3207481.37	1444757.23	40.5518606	-104.7533504	polygon
	2D Polygon: dimensions not calculated							
ONYX FEDERAL WSU BOUNDARY	0.00	0.02	-14.87	3207481.37	1444757.23	40.5518606	-104.7533504	polygon
	2D Polygon: dimensions not calculated							
ONYX FEDERAL 2 BHL REV-1(590'FNL & 150'FEL,SEC.30)	7134.00	-70.31	15607.44	3223103.23	1444818.45	40.5516540	-104.6971340	point
ONYX FEDERAL 2 FED ENTRY POINT	7146.00	-14.98	8934.31	3216430.07	1444817.59	40.5518150	-104.7211470	point
ONYX FEDERAL 2 FED EXIT POINT	7146.00	-18.46	9362.27	3216858.03	1444817.71	40.5518050	-104.7196070	point
ONYX FEDERAL 2 LP REV-1(520'FNL & 1478'FWL,SEC.26)	7179.00	49.37	1208.25	3208704.00	1444816.88	40.5519960	-104.7489490	point

WELLPATH COMPOSITION - Ref Wellbore: ONYX FEDERAL 2 AWB Ref Wellpath: ONYX FEDERAL 2 AWP

Start MD [ft]	End MD [ft]	Positional Uncertainty Model	Log Name/Comment	Wellbore	Survey Date
23.00	1669.00	OWSG MWD rev2 + IFR1 + Multi-Station Correction	OWSG MWD rev2+IFR1+MS 13-1/2" <169 - 1669>	ONYX FEDERAL 2 AWB	12/6/2023
1669.00	22003.00	OWSG MWD rev2 + IFR1 + Multi-Station Correction	OWSG MWD rev2+IFR1+MS 8-1/2" <1762 - 21969>	ONYX FEDERAL 2 AWB	12/6/2023

REFERENCE WELLPATH IDENTIFICATION

Operator	BAYSWATER E&P, LLC	Well	ONYX FEDERAL 2
Field	WELD COUNTY (NAD83/TRUE NORTH)	API	0512352198
Facility	SEC.26-T07N-R66W	Wellbore	ONYX FEDERAL 2 AWB
Slot	SLOT#23 ONYX FEDERAL 2 (551'FNL & 269'FWL,SEC.26)		

WELLPATH COMMENTS

MD [ft]	Inclination [°]	Azimuth [°]	TVD [ft]	Comment
169.00	0.360	281.420	169.00	FIRST BH SURFACE MWD SURVEY
1669.00	6.650	112.540	1664.28	LAST BH SURFACE MWD SURVEY
1762.00	6.340	112.180	1756.68	FIRST BH PRODUCTION MWD SURVEY
7541.00	89.329	90.716	7176.22	CROSS SETBACK HEEL (524'FNL & 1478'FWL,SEC.26)
21941.00	90.028	90.953	7133.28	CROSS SETBACK TOE (590'FNL & 150'FEL,SEC.30)
21969.00	90.000	90.950	7133.27	LAST BH PRODUCTION MWD SURVEY
22003.00	90.000	90.950	7133.27	PROJECTION TO BIT (591'FNL & 88'FEL,SEC.30)