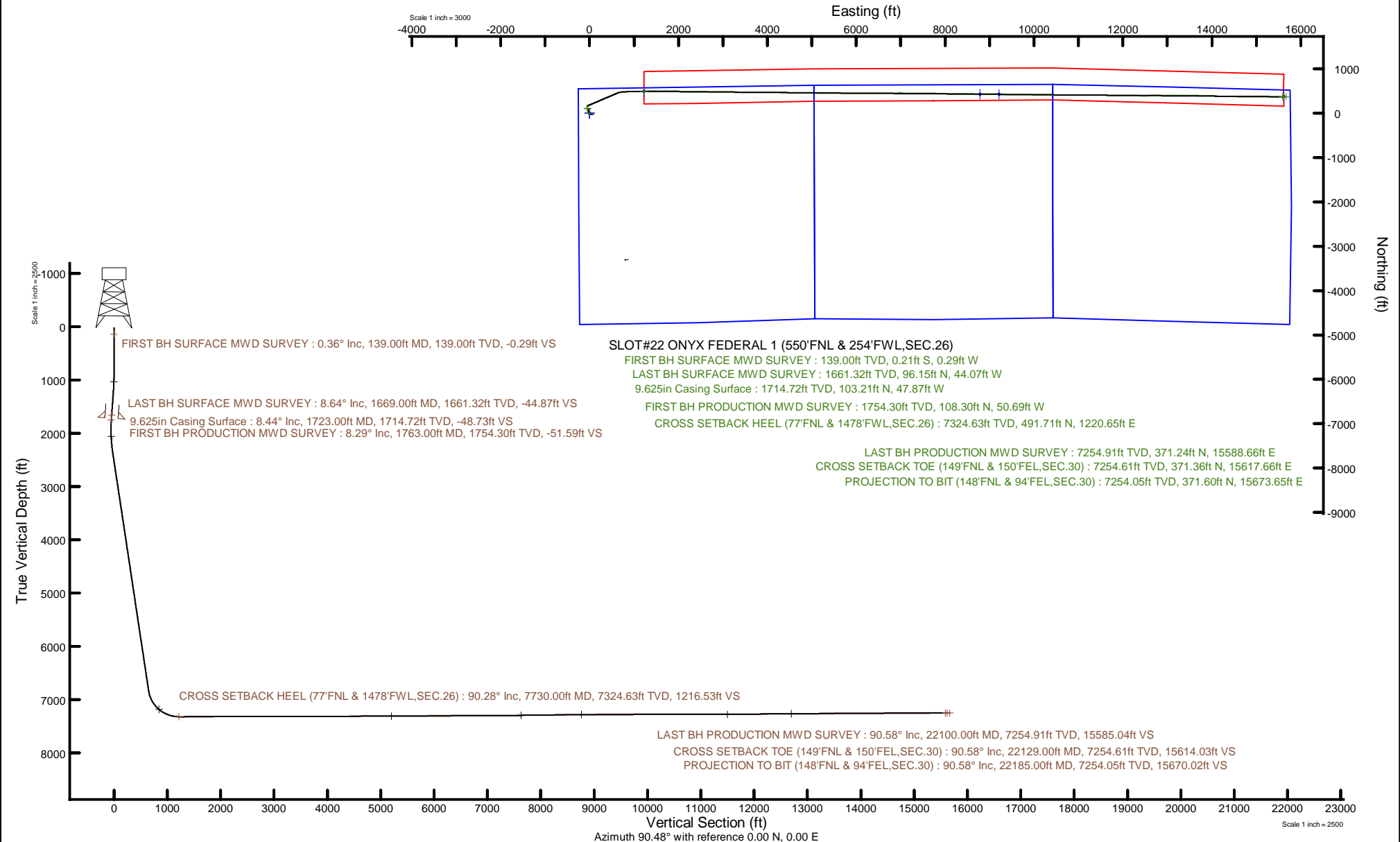


# BAYSWATER E&P, LLC

Location: COLORADO Slot: SLOT#22 ONYX FEDERAL 1 (550'FNL & 254'FWL,SEC.26)  
Field: WELD COUNTY (NAD83/TRUE NORTH) Well: ONYX FEDERAL 1  
Facility: SEC.26-T07N-R66W Wellbore: ONYX FEDERAL 1 PWB



Plot reference wellpath is ONYX FEDERAL 1 PWP Rev-C.0	Grid System: NAD83 / Lambert Colorado SP, Northern Zone (501), US feet
True vertical depths are referenced to Ensign 153 (23) (RKB)	North Reference: True north
Reference wellpath measured depths are referenced to Ensign 153 (23) (RKB)	Scale: True distance
Ensign 153 (23) (RKB) to Mean Sea Level: 4919 feet	Coordinates are in feet referenced to Slot
Mean Sea Level to Ground level (At Slot: SLOT#22 ONYX FEDERAL 1 (550'FNL & 254'FWL,SEC.26)) : -4896 feet	Depths are in feet
Offset wellpath MDs are referenced to each path's default MD datum	Created by: painsetr on 2024-04-03; Database: WellArchitect:DB



# Actual Wellpath Report

ONYX FEDERAL 1 AWP

Page 1 of 9

REFERENCE WELLPATH IDENTIFICATION			
Operator	BAYSWATER E&P, LLC	Well	ONYX FEDERAL 1
Field	WELD COUNTY (NAD83/TRUE NORTH)	API	0512352197
Facility	SEC.26-T07N-R66W	Wellbore	ONYX FEDERAL 1 AWB
Slot	SLOT#22 ONYX FEDERAL 1 (550'FNL & 254'FWL,SEC.26)		

REPORT SETUP INFORMATION			
Projection System	NAD83 / Lambert Colorado SP, Northern Zone (501), US feet	Software System	WellArchitect® 6.0
North Reference	True	User	Painsetr
Scale	0.999971	Report Generated	4/3/2024 at 10:36:42 AM
Convergence at slot	0.48° East	Database	WellArchitectDB

WELLPATH LOCATION						
	Local coordinates		Grid coordinates		Geographic coordinates	
	North[ft]	East[ft]	Easting[US ft]	Northing[US ft]	Latitude	Longitude
Slot Location	-349.88	-709.57	3207481.37	1444757.23	40.5518606°	-104.7533504°
Facility Reference Pt			3208187.94	1445113.08	40.5528210°	-104.7507970°
Field Reference Pt			3174587.00	1430859.71	40.5144139°	-104.8720750°

WELLPATH DATUM			
Calculation method	Minimum curvature	Ensign 153 (23') (RKB) to Facility Vertical Datum	4919.00ft
Horizontal Reference Pt	Slot	Ensign 153 (23') (RKB) to Mean Sea Level	4919.00ft
Vertical Reference Pt	Ensign 153 (23') (RKB)	Ensign 153 (23') (RKB) to Ground Level at Slot (SLOT#22 ONYX FEDERAL 1 (550'FNL & 254'FWL,SEC.26))	23.00ft
MD Reference Pt	Ensign 153 (23') (RKB)	Section Origin	N 0.00, E 0.00 ft
Field Vertical Reference	Mean Sea Level	Section Azimuth	90.48°

### REFERENCE WELLPATH IDENTIFICATION

Operator	BAYSWATER E&P, LLC	Well	ONYX FEDERAL 1
Field	WELD COUNTY (NAD83/TRUE NORTH)	API	0512352197
Facility	SEC.26-T07N-R66W	Wellbore	ONYX FEDERAL 1 AWP
Slot	SLOT#22 ONYX FEDERAL 1 (550'FNL & 254'FWL,SEC.26)		

### WELLPATH DATA (249 stations) † = interpolated, ‡ = extrapolated station

MD [ft]	Inclination [°]	Azimuth [°]	TVD [ft]	Vert Sect [ft]	North [ft]	East [ft]	Grid East [US ft]	Grid North [US ft]	Latitude	Longitude	DLS [°/100ft]	Comments
0.00†	0.000	233.850	0.00	0.00	0.00	0.00	3207481.37	1444757.23	40.5518606	-104.7533504	0.00	
23.00	0.000	233.850	23.00	0.00	0.00	0.00	3207481.37	1444757.23	40.5518606	-104.7533504	0.00	
139.00	0.360	233.850	139.00	-0.29	-0.21	-0.29	3207481.08	1444757.02	40.5518600	-104.7533514	0.31	FIRST BH SURFACE MWD SURVEY
230.00	0.300	236.370	230.00	-0.72	-0.52	-0.72	3207480.65	1444756.71	40.5518592	-104.7533530	0.07	
323.00	0.540	245.380	323.00	-1.32	-0.83	-1.32	3207480.05	1444756.39	40.5518583	-104.7533552	0.27	
413.00	0.340	359.800	412.99	-1.70	-0.74	-1.71	3207479.67	1444756.48	40.5518586	-104.7533565	0.83	
503.00	0.480	13.850	502.99	-1.62	-0.11	-1.62	3207479.75	1444757.11	40.5518603	-104.7533562	0.19	
593.00	0.500	14.990	592.99	-1.44	0.64	-1.43	3207479.93	1444757.86	40.5518624	-104.7533555	0.02	
683.00	0.490	6.970	682.98	-1.29	1.40	-1.28	3207480.08	1444758.62	40.5518644	-104.7533550	0.08	
773.00	0.660	12.150	772.98	-1.14	2.29	-1.13	3207480.23	1444759.51	40.5518669	-104.7533544	0.20	
862.00	1.700	331.610	861.96	-1.68	3.95	-1.65	3207479.69	1444761.17	40.5518714	-104.7533563	1.43	
951.00	2.920	334.550	950.89	-3.31	7.16	-3.25	3207478.06	1444764.36	40.5518803	-104.7533621	1.38	
1041.00	3.890	332.330	1040.73	-5.75	11.93	-5.65	3207475.62	1444769.11	40.5518934	-104.7533707	1.09	
1131.00	5.200	335.250	1130.44	-8.93	18.34	-8.78	3207472.44	1444775.50	40.5519109	-104.7533820	1.48	
1221.00	6.730	337.940	1219.95	-12.69	26.93	-12.46	3207468.68	1444784.06	40.5519345	-104.7533952	1.73	
1310.00	8.780	339.390	1308.13	-17.13	38.12	-16.81	3207464.24	1444795.21	40.5519653	-104.7534109	2.31	
1400.00	11.000	335.280	1396.79	-23.26	52.35	-22.82	3207458.11	1444809.39	40.5520043	-104.7534325	2.59	
1490.00	11.410	334.540	1485.08	-30.81	68.19	-30.24	3207450.56	1444825.16	40.5520478	-104.7534592	0.48	
1579.00	10.060	333.870	1572.52	-38.14	83.12	-37.45	3207443.22	1444840.03	40.5520888	-104.7534852	1.52	
1669.00	8.640	332.120	1661.32	-44.87	96.15	-44.07	3207436.49	1444853.01	40.5521245	-104.7535090	1.61	LAST BH SURFACE MWD SURVEY
1763.00	8.290	330.670	1754.30	-51.59	108.30	-50.69	3207429.77	1444865.10	40.5521579	-104.7535328	0.44	FIRST BH PRODUCTION MWD SURVEY
1807.00	8.550	337.370	1797.82	-54.45	114.09	-53.51	3207426.91	1444870.86	40.5521738	-104.7535429	2.31	
1897.00	7.440	354.220	1886.96	-57.71	126.06	-56.67	3207423.64	1444882.81	40.5522066	-104.7535543	2.87	
1986.00	7.120	11.660	1975.25	-57.27	137.20	-56.13	3207424.09	1444893.95	40.5522372	-104.7535524	2.50	
2076.00	6.940	23.520	2064.58	-54.06	147.64	-52.84	3207427.29	1444904.42	40.5522659	-104.7535405	1.62	
2166.00	7.140	38.990	2153.91	-48.45	156.98	-47.15	3207432.90	1444913.80	40.5522915	-104.7535200	2.11	
2256.00	7.860	51.280	2243.14	-40.20	165.18	-38.83	3207441.16	1444922.07	40.5523140	-104.7534901	1.95	
2346.00	8.780	62.170	2332.20	-29.38	172.23	-27.95	3207451.97	1444929.22	40.5523334	-104.7534510	2.02	
2436.00	9.400	67.190	2421.07	-16.58	178.29	-15.10	3207464.77	1444935.38	40.5523500	-104.7534047	1.12	
2526.00	9.530	66.990	2509.85	-3.00	184.05	-1.47	3207478.35	1444941.26	40.5523658	-104.7533557	0.15	
2616.00	9.590	66.540	2598.60	10.69	189.95	12.27	3207492.04	1444947.27	40.5523820	-104.7533062	0.11	
2705.00	8.970	67.530	2686.43	23.86	195.55	25.48	3207505.20	1444952.98	40.5523974	-104.7532587	0.72	
2794.00	9.490	66.400	2774.28	36.94	201.14	38.62	3207518.29	1444958.68	40.5524127	-104.7532114	0.62	
2883.00	9.480	67.140	2862.06	50.37	206.92	52.09	3207531.72	1444964.58	40.5524286	-104.7531629	0.14	
2973.00	9.570	66.930	2950.82	64.04	212.74	65.80	3207545.38	1444970.51	40.5524445	-104.7531136	0.11	
3063.00	9.520	67.030	3039.58	77.72	218.57	79.54	3207559.07	1444976.46	40.5524606	-104.7530642	0.06	
3153.00	9.520	67.080	3128.34	91.38	224.37	93.25	3207572.72	1444982.38	40.5524765	-104.7530148	0.01	
3243.00	9.560	67.090	3217.09	105.07	230.18	106.99	3207586.41	1444988.30	40.5524924	-104.7529654	0.04	
3333.00	9.600	66.360	3305.84	118.78	236.10	120.75	3207600.12	1444994.33	40.5525087	-104.7529159	0.14	
3427.00	9.570	66.740	3398.52	133.09	242.33	135.11	3207614.43	1445000.68	40.5525258	-104.7528642	0.07	
3517.00	9.250	67.100	3487.31	146.58	248.10	148.64	3207627.91	1445006.57	40.5525416	-104.7528155	0.36	
3606.00	9.250	66.180	3575.16	159.66	253.77	161.77	3207641.00	1445012.35	40.5525572	-104.7527682	0.17	
3696.00	9.200	67.190	3663.99	172.86	259.48	175.02	3207654.20	1445018.17	40.5525728	-104.7527206	0.19	
3785.00	9.250	66.710	3751.84	185.94	265.07	188.15	3207667.28	1445023.87	40.5525882	-104.7526733	0.10	
3875.00	9.190	66.410	3840.68	199.13	270.80	201.38	3207680.46	1445029.71	40.5526039	-104.7526257	0.09	

### REFERENCE WELLPATH IDENTIFICATION

Operator	BAYSWATER E&P, LLC	Well	ONYX FEDERAL 1
Field	WELD COUNTY (NAD83/TRUE NORTH)	API	0512352197
Facility	SEC.26-T07N-R66W	Wellbore	ONYX FEDERAL 1 AWB
Slot	SLOT#22 ONYX FEDERAL 1 (550'FNL & 254'FWL,SEC.26)		

### WELLPATH DATA (249 stations)

MD [ft]	Inclination [°]	Azimuth [°]	TVD [ft]	Vert Sect [ft]	North [ft]	East [ft]	Grid East [US ft]	Grid North [US ft]	Latitude	Longitude	DLS ["/100ft]	Comments
3964.00	9.350	67.030	3928.52	212.25	276.47	214.55	3207693.58	1445035.49	40.5526195	-104.7525783	0.21	
4054.00	9.230	66.780	4017.34	225.57	282.17	227.92	3207706.90	1445041.30	40.5526351	-104.7525302	0.14	
4144.00	9.260	67.040	4106.17	238.82	287.84	241.22	3207720.15	1445047.08	40.5526507	-104.7524824	0.06	
4233.00	9.200	66.670	4194.01	251.90	293.45	254.34	3207733.23	1445052.80	40.5526661	-104.7524351	0.09	
4323.00	9.250	66.420	4282.85	265.09	299.19	267.58	3207746.41	1445058.66	40.5526818	-104.7523875	0.07	
4413.00	9.290	66.950	4371.67	278.35	304.93	280.89	3207759.68	1445064.51	40.5526976	-104.7523396	0.10	
4502.00	9.250	67.120	4459.51	291.50	310.52	294.09	3207772.83	1445070.21	40.5527129	-104.7522921	0.05	
4592.00	9.240	66.680	4548.34	304.76	316.20	307.39	3207786.08	1445076.00	40.5527285	-104.7522442	0.08	
4682.00	9.220	66.800	4637.18	317.97	321.90	320.66	3207799.30	1445081.81	40.5527442	-104.7521965	0.03	
4771.00	9.230	66.800	4725.03	331.04	327.52	333.77	3207812.36	1445087.54	40.5527596	-104.7521493	0.01	
4860.00	9.160	66.040	4812.88	344.02	333.21	346.80	3207825.35	1445093.34	40.5527752	-104.7521024	0.16	
4949.00	9.150	66.990	4900.75	356.96	338.85	359.79	3207838.28	1445099.09	40.5527907	-104.7520557	0.17	
5039.00	9.250	67.060	4989.59	370.17	344.47	373.04	3207851.48	1445104.82	40.5528061	-104.7520080	0.11	
5129.00	9.170	66.570	5078.43	383.36	350.14	386.28	3207864.68	1445110.60	40.5528217	-104.7519603	0.12	
5218.00	9.170	67.300	5166.29	396.36	355.69	399.33	3207877.68	1445116.27	40.5528369	-104.7519134	0.13	
5308.00	9.170	66.350	5255.14	409.50	361.34	412.52	3207890.82	1445122.02	40.5528524	-104.7518659	0.17	
5398.00	9.050	67.280	5344.01	422.55	366.95	425.61	3207903.87	1445127.74	40.5528678	-104.7518188	0.21	
5487.00	9.170	66.730	5431.89	435.48	372.45	438.58	3207916.79	1445133.35	40.5528829	-104.7517721	0.17	
5577.00	9.350	67.290	5520.71	448.76	378.11	451.92	3207930.07	1445139.12	40.5528984	-104.7517241	0.22	
5666.00	9.370	66.440	5608.53	462.02	383.80	465.23	3207943.33	1445144.92	40.5529141	-104.7516763	0.16	
5756.00	9.490	66.710	5697.31	475.50	389.66	478.76	3207956.82	1445150.90	40.5529301	-104.7516276	0.14	
5845.00	9.350	68.140	5785.11	488.91	395.25	492.21	3207970.22	1445156.60	40.5529455	-104.7515792	0.31	
5935.00	9.440	68.050	5873.90	502.49	400.73	505.84	3207983.80	1445162.20	40.5529605	-104.7515301	0.10	
6024.00	9.420	68.080	5961.70	515.97	406.18	519.36	3207997.28	1445167.76	40.5529755	-104.7514814	0.02	
6114.00	9.330	67.980	6050.50	529.52	411.66	532.96	3208010.83	1445173.36	40.5529905	-104.7514325	0.10	
6204.00	9.290	67.400	6139.31	542.95	417.19	546.43	3208024.25	1445179.00	40.5530057	-104.7513840	0.11	
6293.00	9.260	67.620	6227.15	556.15	422.68	559.68	3208037.46	1445184.60	40.5530208	-104.7513363	0.05	
6382.00	9.190	67.440	6315.00	569.29	428.13	572.87	3208050.60	1445190.16	40.5530357	-104.7512889	0.09	
6471.00	9.260	67.980	6402.85	582.45	433.54	586.07	3208063.75	1445195.68	40.5530506	-104.7512414	0.13	
6561.00	9.350	67.120	6491.66	595.85	439.10	599.52	3208077.15	1445201.35	40.5530658	-104.7511930	0.18	
6651.00	8.940	67.750	6580.52	609.01	444.59	612.73	3208090.31	1445206.95	40.5530809	-104.7511455	0.47	
6741.00	8.790	67.590	6669.45	621.80	449.86	625.56	3208103.10	1445212.33	40.5530954	-104.7510993	0.17	
6831.00	9.320	67.640	6758.32	634.85	455.25	638.65	3208116.15	1445217.83	40.5531102	-104.7510522	0.59	
6920.00	10.040	68.300	6846.06	648.67	460.86	652.53	3208129.97	1445223.56	40.5531256	-104.7510022	0.82	
7010.00	18.260	77.640	6933.26	669.73	466.79	673.63	3208151.02	1445229.67	40.5531419	-104.7509263	9.45	
7100.00	27.660	83.470	7016.05	704.29	472.20	708.24	3208185.58	1445235.37	40.5531567	-104.7508018	10.73	
7189.00	36.660	83.410	7091.32	751.26	477.61	755.25	3208232.55	1445241.17	40.5531715	-104.7506326	10.11	
7279.00	45.000	88.410	7159.37	809.84	481.59	813.87	3208291.13	1445245.64	40.5531824	-104.7504216	9.95	
7369.00	54.450	88.850	7217.49	878.39	483.21	882.44	3208359.68	1445247.84	40.5531869	-104.7501749	10.51	
7459.00	63.050	88.860	7264.13	955.23	484.74	959.29	3208436.52	1445250.02	40.5531911	-104.7498983	9.56	
7550.00	72.310	88.730	7298.66	1039.29	486.51	1043.36	3208520.57	1445252.50	40.5531959	-104.7495958	10.18	
7640.00	82.040	88.420	7318.61	1126.89	488.70	1130.98	3208608.16	1445255.42	40.5532019	-104.7492805	10.82	
7730.00	90.280	87.730	7324.63	1216.53	491.71	1220.65	3208697.80	1445259.19	40.5532102	-104.7489578	9.19	CROSS SETBACK HEEL (77'FNL & 1478'FWL,SEC.26)
7820.00	90.000	87.630	7324.41	1306.42	495.36	1310.58	3208787.69	1445263.59	40.5532202	-104.7486342	0.33	
7910.00	89.880	87.940	7324.51	1396.32	498.84	1400.51	3208877.59	1445267.83	40.5532297	-104.7483106	0.37	

### REFERENCE WELLPATH IDENTIFICATION

Operator	BAYSWATER E&P, LLC	Well	ONYX FEDERAL 1
Field	WELD COUNTY (NAD83/TRUE NORTH)	API	0512352197
Facility	SEC.26-T07N-R66W	Wellbore	ONYX FEDERAL 1 AWB
Slot	SLOT#22 ONYX FEDERAL 1 (550'FNL & 254'FWL,SEC.26)		

### WELLPATH DATA (249 stations)

MD [ft]	Inclination [°]	Azimuth [°]	TVD [ft]	Vert Sect [ft]	North [ft]	East [ft]	Grid East [US ft]	Grid North [US ft]	Latitude	Longitude	DLS ["/100ft]	Comments
7999.00	89.880	90.890	7324.69	1485.29	499.74	1489.50	3208966.56	1445269.49	40.5532322	-104.7479904	3.31	
8089.00	90.520	90.930	7324.38	1575.29	498.32	1579.49	3209056.55	1445268.81	40.5532283	-104.7476665	0.71	
8179.00	90.090	90.880	7323.90	1665.29	496.89	1669.47	3209146.55	1445268.15	40.5532243	-104.7473427	0.48	
8268.00	89.820	90.640	7323.97	1754.29	495.71	1758.46	3209235.54	1445267.72	40.5532211	-104.7470225	0.41	
8357.00	90.340	90.860	7323.84	1843.28	494.55	1847.46	3209324.54	1445267.30	40.5532179	-104.7467022	0.63	
8447.00	90.180	90.650	7323.44	1933.28	493.36	1937.45	3209414.53	1445266.88	40.5532146	-104.7463784	0.29	
8536.00	90.460	90.490	7322.94	2022.28	492.48	2026.44	3209503.53	1445266.74	40.5532121	-104.7460581	0.36	
8626.00	90.710	91.070	7322.02	2112.27	491.25	2116.43	3209593.52	1445266.27	40.5532088	-104.7457343	0.70	
8716.00	90.650	90.620	7320.95	2202.27	489.93	2206.41	3209683.51	1445265.70	40.5532051	-104.7454105	0.50	
8805.00	90.120	90.160	7320.35	2291.26	488.32	2295.41	3209772.50	1445265.85	40.5532034	-104.7450902	0.79	
8894.00	90.400	91.040	7319.95	2380.26	488.39	2384.40	3209861.50	1445265.66	40.5532008	-104.7447700	1.04	
8984.00	90.430	91.300	7319.30	2470.25	486.55	2474.38	3209951.49	1445264.58	40.5531958	-104.7444462	0.29	
9074.00	91.230	91.350	7317.99	2560.23	484.47	2564.35	3210041.47	1445263.26	40.5531900	-104.7441225	0.89	
9163.00	90.090	90.790	7316.97	2649.22	482.81	2653.32	3210130.45	1445262.35	40.5531854	-104.7438023	1.43	
9253.00	90.090	90.470	7316.83	2739.22	481.82	2743.32	3210220.45	1445262.12	40.5531827	-104.7434784	0.36	
9343.00	89.820	90.880	7316.90	2829.22	480.76	2833.31	3210310.44	1445261.81	40.5531798	-104.7431546	0.55	
9432.00	89.910	90.730	7317.11	2918.22	479.51	2922.30	3210399.44	1445261.31	40.5531763	-104.7428343	0.20	
9522.00	90.400	91.350	7316.86	3008.21	477.87	3012.29	3210489.43	1445260.44	40.5531718	-104.7425105	0.88	
9611.00	90.000	90.690	7316.55	3097.21	476.29	3101.27	3210578.42	1445259.60	40.5531674	-104.7421903	0.87	
9701.00	90.220	90.980	7316.38	3187.20	474.98	3191.26	3210668.42	1445259.05	40.5531638	-104.7418665	0.40	
9790.00	89.940	90.920	7316.26	3276.20	473.50	3280.25	3210757.41	1445258.32	40.5531597	-104.7415463	0.32	
9879.00	90.180	90.560	7316.16	3365.20	472.35	3369.24	3210846.41	1445257.92	40.5531565	-104.7412260	0.49	
9969.00	89.320	90.580	7316.56	3455.20	471.46	3459.23	3210936.40	1445257.78	40.5531540	-104.7409022	0.96	
10059.00	89.290	90.670	7317.65	3545.19	470.48	3549.22	3211026.39	1445257.56	40.5531513	-104.7405783	0.11	
10148.00	89.450	90.690	7318.63	3634.18	469.42	3638.21	3211115.38	1445257.25	40.5531483	-104.7402581	0.18	
10238.00	90.180	90.670	7318.92	3724.18	468.35	3728.20	3211205.38	1445256.94	40.5531454	-104.7399343	0.81	
10327.00	90.180	90.500	7318.64	3813.18	467.44	3817.20	3211294.38	1445256.78	40.5531428	-104.7396140	0.19	
10417.00	90.280	90.690	7318.28	3903.18	466.51	3907.19	3211384.37	1445256.61	40.5531402	-104.7392902	0.24	
10507.00	90.340	90.410	7317.79	3993.18	465.64	3997.19	3211474.37	1445256.50	40.5531378	-104.7389663	0.32	
10596.00	90.460	90.580	7317.17	4082.18	464.88	4086.18	3211563.36	1445256.48	40.5531357	-104.7386461	0.23	
10686.00	90.030	90.440	7316.78	4172.18	464.07	4176.18	3211653.36	1445256.44	40.5531334	-104.7383222	0.50	
10774.00	90.310	91.020	7316.52	4260.17	462.95	4264.17	3211741.36	1445256.06	40.5531303	-104.7380056	0.73	
10863.00	90.370	90.710	7315.99	4349.17	461.61	4353.16	3211830.35	1445255.46	40.5531266	-104.7376854	0.35	
10953.00	90.400	90.660	7315.39	4439.17	460.53	4443.15	3211920.34	1445255.15	40.5531236	-104.7373615	0.06	
11043.00	90.310	90.530	7314.83	4529.17	459.60	4533.14	3212010.34	1445254.97	40.5531210	-104.7370377	0.18	
11132.00	90.490	90.760	7314.21	4618.16	458.60	4622.13	3212099.33	1445254.72	40.5531182	-104.7367174	0.33	
11221.00	90.370	90.330	7313.54	4707.16	457.75	4711.13	3212188.33	1445254.62	40.5531158	-104.7363972	0.50	
11311.00	90.800	90.820	7312.62	4797.16	456.85	4801.12	3212278.32	1445254.47	40.5531133	-104.7360734	0.72	
11400.00	89.880	90.740	7312.10	4886.15	455.64	4890.11	3212367.31	1445254.01	40.5531099	-104.7357531	1.04	
11490.00	90.030	90.710	7312.17	4976.15	454.50	4980.10	3212457.31	1445253.63	40.5531067	-104.7354293	0.17	
11580.00	90.120	90.660	7312.05	5066.15	453.42	5070.09	3212547.31	1445253.31	40.5531037	-104.7351054	0.11	
11669.00	90.000	90.840	7311.96	5155.15	452.26	5159.08	3212636.30	1445252.90	40.5531005	-104.7347852	0.24	
11758.00	90.060	90.730	7311.91	5244.15	451.04	5248.08	3212725.30	1445252.43	40.5530971	-104.7344650	0.14	
11848.00	90.340	90.620	7311.59	5334.15	449.98	5338.07	3212815.29	1445252.12	40.5530941	-104.7341411	0.33	
11938.00	90.370	90.490	7311.04	5424.14	449.10	5428.06	3212905.29	1445252.01	40.5530917	-104.7338173	0.15	

### REFERENCE WELLPATH IDENTIFICATION

Operator	BAYSWATER E&P, LLC	Well	ONYX FEDERAL 1
Field	WELD COUNTY (NAD83/TRUE NORTH)	API	0512352197
Facility	SEC.26-T07N-R66W	Wellbore	ONYX FEDERAL 1 AWB
Slot	SLOT#22 ONYX FEDERAL 1 (550'FNL & 254'FWL,SEC.26)		

### WELLPATH DATA (249 stations)

MD [ft]	Inclination [°]	Azimuth [°]	TVD [ft]	Vert Sect [ft]	North [ft]	East [ft]	Grid East [US ft]	Grid North [US ft]	Latitude	Longitude	DLS ["/100ft]	Comments
12028.00	90.430	90.420	7310.41	5514.14	448.39	5518.06	3212995.28	1445252.05	40.5530897	-104.7334934	0.10	
12118.00	90.430	90.670	7309.73	5604.14	447.53	5608.05	3213085.28	1445251.95	40.5530873	-104.7331696	0.28	
12207.00	90.650	90.720	7308.89	5693.14	446.45	5697.04	3213174.27	1445251.62	40.5530842	-104.7328493	0.25	
12296.00	90.550	90.620	7307.96	5782.13	445.41	5786.03	3213263.26	1445251.33	40.5530813	-104.7325291	0.16	
12386.00	90.550	90.540	7307.10	5872.13	444.50	5876.02	3213353.26	1445251.18	40.5530788	-104.7322053	0.09	
12476.00	91.170	90.470	7305.75	5962.12	443.71	5966.01	3213443.24	1445251.14	40.5530765	-104.7318815	0.69	
12565.00	89.850	89.510	7304.96	6051.11	443.73	6055.00	3213532.23	1445251.91	40.5530765	-104.7315612	1.83	
12654.00	89.850	89.870	7305.19	6140.10	444.21	6144.00	3213621.22	1445253.14	40.5530778	-104.7312409	0.40	
12744.00	89.850	89.490	7305.42	6230.09	444.71	6234.00	3213711.21	1445254.40	40.5530791	-104.7309171	0.42	
12834.00	90.030	89.850	7305.52	6320.08	445.23	6324.00	3213801.19	1445255.68	40.5530805	-104.7305932	0.45	
12923.00	90.030	86.600	7305.47	6409.00	447.98	6412.94	3213890.11	1445259.18	40.5530880	-104.7302731	3.65	
13012.00	89.940	89.740	7305.50	6497.91	450.83	6501.88	3213979.02	1445262.77	40.5530957	-104.7299531	3.53	
13101.00	89.910	89.580	7305.61	6586.91	451.35	6590.88	3214068.01	1445264.05	40.5530971	-104.7296328	0.18	
13190.00	89.750	89.900	7305.88	6675.90	451.76	6679.88	3214157.00	1445265.20	40.5530981	-104.7293125	0.40	
13280.00	89.850	90.190	7306.19	6765.89	451.69	6769.88	3214246.99	1445265.89	40.5530979	-104.7289887	0.34	
13369.00	90.460	89.640	7305.95	6854.89	451.82	6858.88	3214335.99	1445266.77	40.5530982	-104.7286684	0.92	
13459.00	90.310	89.330	7305.34	6944.87	452.63	6948.87	3214425.97	1445268.34	40.5531003	-104.7283446	0.38	
13548.00	90.520	90.730	7304.70	7033.87	452.58	7037.87	3214514.96	1445269.04	40.5531001	-104.7280243	1.59	
13638.00	90.310	90.890	7304.05	7123.86	451.31	7127.86	3214604.95	1445268.53	40.5530965	-104.7277005	0.29	
13728.00	90.520	90.620	7303.40	7213.86	450.12	7217.85	3214694.94	1445268.10	40.5530932	-104.7273766	0.38	
13817.00	91.170	90.580	7302.08	7302.85	449.19	7306.83	3214783.93	1445267.92	40.5530906	-104.7270564	0.73	
13906.00	90.860	90.970	7300.51	7391.83	447.99	7395.81	3214872.91	1445267.46	40.5530872	-104.7267362	0.56	
13996.00	90.400	90.590	7299.52	7481.83	446.76	7485.80	3214962.90	1445266.99	40.5530838	-104.7264124	0.66	
14085.00	90.830	90.640	7298.56	7570.82	445.81	7574.78	3215051.90	1445266.79	40.5530811	-104.7260922	0.49	
14175.00	90.580	90.820	7297.45	7660.81	444.66	7664.77	3215141.88	1445266.40	40.5530779	-104.7257684	0.34	
14264.00	90.520	90.970	7296.60	7749.81	443.27	7753.76	3215230.88	1445265.76	40.5530740	-104.7254482	0.18	
14354.00	90.400	90.850	7295.88	7839.80	441.84	7843.74	3215320.87	1445265.09	40.5530700	-104.7251243	0.19	
14444.00	90.430	90.700	7295.23	7929.80	440.62	7933.73	3215410.86	1445264.63	40.5530665	-104.7248005	0.17	
14534.00	90.460	90.790	7294.53	8019.79	439.45	8023.72	3215500.85	1445264.21	40.5530633	-104.7244767	0.11	
14623.00	90.430	90.570	7293.84	8108.79	438.40	8112.71	3215589.85	1445263.91	40.5530603	-104.7241564	0.25	
14712.00	90.280	90.910	7293.28	8197.79	437.25	8201.70	3215678.84	1445263.51	40.5530570	-104.7238362	0.42	
14802.00	90.520	90.820	7292.66	8287.78	435.89	8291.69	3215768.84	1445262.91	40.5530532	-104.7235124	0.28	
14892.00	90.800	90.100	7291.62	8377.78	435.17	8381.68	3215858.83	1445262.94	40.5530512	-104.7231886	0.86	
14981.00	90.830	90.410	7290.35	8466.77	434.77	8470.67	3215947.81	1445263.30	40.5530500	-104.7228683	0.35	
15071.00	91.230	90.860	7288.74	8556.75	433.77	8560.65	3216037.80	1445263.06	40.5530472	-104.7225445	0.67	
15202.00	91.020	90.480	7286.16	8687.72	432.24	8691.62	3216168.77	1445262.63	40.5530428	-104.7220732	0.33	
15291.00	90.680	90.630	7284.84	8776.71	431.38	8780.60	3216257.75	1445262.51	40.5530404	-104.7217530	0.42	
15381.00	90.400	91.100	7283.99	8866.71	430.02	8870.59	3216347.74	1445261.91	40.5530366	-104.7214292	0.61	
15471.00	90.740	90.720	7283.10	8956.70	428.59	8960.57	3216437.73	1445261.24	40.5530326	-104.7211054	0.57	
15560.00	90.800	90.680	7281.90	9045.69	427.51	9049.56	3216526.72	1445260.90	40.5530295	-104.7207852	0.08	
15649.00	89.690	90.740	7281.52	9134.69	426.40	9138.55	3216615.72	1445260.55	40.5530264	-104.7204650	1.25	
15738.00	90.030	90.920	7281.74	9223.69	425.11	9227.54	3216704.71	1445260.01	40.5530227	-104.7201447	0.43	
15827.00	90.550	91.100	7281.29	9312.68	423.54	9316.52	3216793.70	1445259.19	40.5530183	-104.7198245	0.62	
15917.00	90.490	91.090	7280.47	9402.67	421.82	9406.50	3216883.69	1445258.23	40.5530135	-104.7195007	0.07	
16007.00	90.550	91.000	7279.66	9492.66	420.18	9496.48	3216973.68	1445257.35	40.5530089	-104.7191769	0.12	

### REFERENCE WELLPATH IDENTIFICATION

Operator	BAYSWATER E&P, LLC	Well	ONYX FEDERAL 1
Field	WELD COUNTY (NAD83/TRUE NORTH)	API	0512352197
Facility	SEC.26-T07N-R66W	Wellbore	ONYX FEDERAL 1 AWB
Slot	SLOT#22 ONYX FEDERAL 1 (550'FNL & 254'FWL,SEC.26)		

### WELLPATH DATA (249 stations)

MD [ft]	Inclination [°]	Azimuth [°]	TVD [ft]	Vert Sect [ft]	North [ft]	East [ft]	Grid East [US ft]	Grid North [US ft]	Latitude	Longitude	DLS [°/100ft]	Comments
16096.00	90.860	91.090	7278.56	9581.65	418.56	9585.46	3217062.67	1445256.47	40.5530044	-104.7188567	0.36	
16186.00	89.080	90.660	7278.61	9671.65	417.19	9675.45	3217152.66	1445255.86	40.5530005	-104.7185329	2.03	
16275.00	89.420	90.780	7279.77	9760.64	416.07	9764.43	3217241.65	1445255.49	40.5529973	-104.7182127	0.41	
16365.00	89.380	90.610	7280.72	9850.63	414.98	9854.42	3217331.64	1445255.15	40.5529942	-104.7178889	0.19	
16455.00	90.550	91.840	7280.77	9940.62	413.05	9944.40	3217421.62	1445253.99	40.5529889	-104.7175651	1.89	
16544.00	90.220	93.390	7280.17	10029.55	408.99	10033.30	3217510.55	1445250.67	40.5529776	-104.7172452	1.78	
16634.00	90.120	89.770	7279.91	10119.52	406.51	10123.25	3217600.52	1445248.95	40.5529707	-104.7169215	4.02	
16724.00	90.060	89.740	7279.76	10209.52	406.90	10213.25	3217690.51	1445250.09	40.5529717	-104.7165976	0.07	
16814.00	90.180	90.190	7279.58	10299.51	406.95	10303.25	3217780.50	1445250.91	40.5529717	-104.7162738	0.52	
16903.00	89.780	89.830	7279.61	10388.51	406.93	10392.25	3217869.50	1445251.64	40.5529716	-104.7159535	0.60	
16993.00	89.690	88.500	7280.02	10478.48	408.25	10482.23	3217959.47	1445253.71	40.5529751	-104.7156297	1.48	
17083.00	90.030	89.740	7280.24	10568.45	409.63	10572.22	3218049.44	1445255.85	40.5529787	-104.7153058	1.43	
17172.00	90.030	89.810	7280.20	10657.45	409.98	10661.22	3218138.43	1445256.95	40.5529796	-104.7149856	0.08	
17262.00	90.060	90.070	7280.13	10747.44	410.07	10751.22	3218228.42	1445257.80	40.5529798	-104.7146617	0.29	
17351.00	90.180	89.790	7279.94	10836.44	410.18	10840.22	3218317.41	1445258.66	40.5529799	-104.7143414	0.34	
17441.00	90.180	89.930	7279.66	10926.43	410.40	10930.22	3218407.40	1445259.64	40.5529804	-104.7140176	0.16	
17530.00	90.090	90.650	7279.45	11015.43	409.95	11019.22	3218496.40	1445259.93	40.5529791	-104.7136973	0.82	
17619.00	90.250	90.660	7279.18	11104.43	408.93	11108.21	3218585.40	1445259.67	40.5529762	-104.7133771	0.18	
17708.00	90.060	90.860	7278.94	11193.43	407.75	11197.20	3218674.39	1445259.24	40.5529728	-104.7130568	0.31	
17798.00	90.030	90.520	7278.87	11283.43	406.67	11287.20	3218764.39	1445258.91	40.5529698	-104.7127330	0.38	
17888.00	90.150	90.480	7278.73	11373.43	405.88	11377.19	3218854.39	1445258.88	40.5529675	-104.7124091	0.14	
17978.00	90.120	90.950	7278.52	11463.43	404.76	11467.19	3218944.38	1445258.52	40.5529643	-104.7120853	0.52	
18068.00	90.490	90.650	7278.04	11553.42	403.50	11557.18	3219034.38	1445258.02	40.5529607	-104.7117615	0.53	
18158.00	90.370	90.770	7277.36	11643.42	402.39	11647.17	3219124.37	1445257.66	40.5529575	-104.7114376	0.19	
18248.00	90.280	90.980	7276.85	11733.42	401.01	11737.15	3219214.36	1445257.04	40.5529537	-104.7111138	0.25	
18335.00	90.280	90.670	7276.43	11820.41	399.76	11824.14	3219301.36	1445256.52	40.5529501	-104.7108008	0.36	
18426.00	90.400	90.680	7275.89	11911.41	398.69	11915.14	3219392.35	1445256.22	40.5529470	-104.7104733	0.13	
18516.00	90.250	90.720	7275.38	12001.41	397.59	12005.13	3219482.35	1445255.88	40.5529439	-104.7101495	0.17	
18605.00	90.400	90.760	7274.87	12090.41	396.44	12094.12	3219571.34	1445255.48	40.5529406	-104.7098293	0.17	
18785.00	90.370	90.690	7273.66	12270.40	394.16	12274.10	3219751.33	1445254.71	40.5529341	-104.7091816	0.04	
18874.00	90.250	90.980	7273.18	12359.40	392.87	12363.09	3219840.33	1445254.17	40.5529304	-104.7088614	0.35	
18964.00	90.340	89.850	7272.72	12449.40	392.21	12453.08	3219930.32	1445254.27	40.5529285	-104.7085375	1.26	
19054.00	90.370	89.730	7272.16	12539.39	392.54	12543.08	3220020.31	1445255.36	40.5529293	-104.7082137	0.14	
19144.00	90.180	89.980	7271.73	12629.38	392.77	12633.08	3220110.30	1445256.35	40.5529298	-104.7078898	0.35	
19233.00	90.460	89.730	7271.23	12718.38	393.00	12722.08	3220199.29	1445257.32	40.5529303	-104.7075695	0.42	
19323.00	90.180	89.900	7270.73	12808.37	393.29	12812.08	3220289.28	1445258.37	40.5529310	-104.7072457	0.36	
19413.00	90.460	89.810	7270.23	12898.36	393.52	12902.08	3220379.27	1445259.35	40.5529315	-104.7069218	0.33	
19503.00	90.680	89.720	7269.33	12988.35	393.88	12992.07	3220469.26	1445260.48	40.5529324	-104.7065980	0.26	
19593.00	90.650	90.020	7268.29	13078.34	394.09	13082.06	3220559.24	1445261.44	40.5529328	-104.7062741	0.33	
19683.00	90.090	89.540	7267.70	13168.33	394.43	13172.06	3220649.23	1445262.55	40.5529336	-104.7059503	0.82	
19773.00	90.400	89.720	7267.32	13258.32	395.02	13262.06	3220739.22	1445263.88	40.5529351	-104.7056264	0.40	
19862.00	90.650	89.780	7266.50	13347.31	395.40	13351.05	3220828.20	1445265.02	40.5529360	-104.7053061	0.29	
19952.00	90.280	89.760	7265.77	13437.30	395.76	13441.05	3220918.19	1445266.14	40.5529369	-104.7049823	0.41	
20041.00	90.490	91.030	7265.18	13526.29	395.15	13530.04	3221007.18	1445266.28	40.5529350	-104.7046620	1.45	
20131.00	90.280	90.730	7264.57	13616.29	393.77	13620.03	3221097.17	1445265.65	40.5529311	-104.7043382	0.41	

# Actual Wellpath Report

ONYX FEDERAL 1 AWP

Page 7 of 9

## REFERENCE WELLPATH IDENTIFICATION

Operator	BAYSWATER E&P, LLC	Well	ONYX FEDERAL 1
Field	WELD COUNTY (NAD83/TRUE NORTH)	API	0512352197
Facility	SEC.26-T07N-R66W	Wellbore	ONYX FEDERAL 1 AWP
Slot	SLOT#22 ONYX FEDERAL 1 (550'FNL & 254'FWL,SEC.26)		

## WELLPATH DATA (249 stations) † = interpolated, ‡ = extrapolated station

MD [ft]	Inclination [°]	Azimuth [°]	TVD [ft]	Vert Sect [ft]	North [ft]	East [ft]	Grid East [US ft]	Grid North [US ft]	Latitude	Longitude	DLS [°/100ft]	Comments
20220.00	90.680	90.930	7263.83	13705.28	392.48	13709.02	3221186.17	1445265.11	40.5529274	-104.7040180	0.50	
20309.00	90.340	91.070	7263.03	13794.28	390.93	13798.00	3221275.16	1445264.31	40.5529230	-104.7036978	0.41	
20424.00	90.150	91.550	7262.54	13909.26	388.30	13912.97	3221390.14	1445262.65	40.5529156	-104.7032841	0.45	
20488.00	90.490	91.730	7262.18	13973.25	386.47	13976.94	3221454.12	1445261.35	40.5529105	-104.7030539	0.60	
20577.00	90.090	91.610	7261.73	14062.23	383.87	14065.90	3221543.10	1445259.51	40.5529033	-104.7027338	0.47	
20666.00	90.220	90.730	7261.49	14151.22	382.06	14154.88	3221632.09	1445258.44	40.5528981	-104.7024136	1.00	
20756.00	90.250	89.860	7261.12	14241.22	381.59	14244.88	3221722.09	1445258.74	40.5528967	-104.7020897	0.97	
20846.00	90.120	92.330	7260.83	14331.21	379.87	14334.86	3221812.07	1445257.77	40.5528918	-104.7017659	2.75	
20936.00	90.250	93.020	7260.54	14421.14	375.67	14424.76	3221902.00	1445254.33	40.5528802	-104.7014424	0.78	
21025.00	90.220	90.320	7260.18	14510.11	373.08	14513.71	3221990.97	1445252.49	40.5528729	-104.7011223	3.03	
21114.00	90.180	91.550	7259.87	14599.10	371.63	14602.70	3222079.96	1445251.78	40.5528688	-104.7008021	1.38	
21204.00	90.030	89.390	7259.70	14689.10	370.89	14692.69	3222169.95	1445251.80	40.5528666	-104.7004783	2.41	
21294.00	90.120	90.550	7259.58	14779.09	370.93	14782.69	3222259.94	1445252.61	40.5528666	-104.7001544	1.29	
21383.00	89.690	89.190	7259.73	14868.09	371.14	14871.68	3222348.93	1445253.56	40.5528670	-104.6998341	1.60	
21473.00	90.460	89.900	7259.61	14958.07	371.85	14961.68	3222438.92	1445255.03	40.5528688	-104.6995103	1.16	
21562.00	90.430	90.140	7258.92	15047.07	371.82	15050.68	3222527.91	1445255.75	40.5528686	-104.6991900	0.27	
21652.00	90.520	89.840	7258.18	15137.06	371.84	15140.67	3222617.90	1445256.52	40.5528685	-104.6988662	0.35	
21742.00	90.310	90.120	7257.52	15227.06	371.87	15230.67	3222707.89	1445257.31	40.5528684	-104.6985423	0.39	
21831.00	90.620	90.050	7256.80	15316.05	371.74	15319.67	3222796.88	1445257.93	40.5528679	-104.6982221	0.36	
21921.00	90.520	90.350	7255.91	15406.04	371.42	15409.66	3222886.88	1445258.37	40.5528669	-104.6978982	0.35	
22011.00	90.090	90.060	7255.43	15496.04	371.10	15499.66	3222976.87	1445258.81	40.5528658	-104.6975744	0.58	
22100.00	90.580	89.760	7254.91	15585.04	371.24	15588.66	3223065.86	1445259.70	40.5528661	-104.6972541	0.65	LAST BH PRODUCTION MWD SURVEY
22129.00†	90.580	89.760	7254.61	15614.03	371.36	15617.66	3223094.86	1445260.06	40.5528663	-104.6971497	0.00	CROSS SETBACK TOE (149'FNL & 150'FEL,SEC.30)
22185.00‡	90.580	89.760	7254.05	15670.02	371.60	15673.65	3223150.85	1445260.77	40.5528669	-104.6969482	0.00	PROJECTION TO BIT (148'FNL & 94'FEL,SEC.30)

## HOLE & CASING SECTIONS - Ref Wellbore: ONYX FEDERAL 1 AWP Ref Wellpath: ONYX FEDERAL 1 AWP

String/Diameter	Start MD [ft]	End MD [ft]	Interval [ft]	Start TVD [ft]	End TVD [ft]	Start N/S [ft]	Start E/W [ft]	End N/S [ft]	End E/W [ft]
9.625in Casing Surface	23.00	1723.00	1700.00	23.00	1714.72	0.00	0.00	103.21	-47.87

### REFERENCE WELLPATH IDENTIFICATION

Operator	BAYSWATER E&P, LLC	Well	ONYX FEDERAL 1
Field	WELD COUNTY (NAD83/TRUE NORTH)	API	0512352197
Facility	SEC.26-T07N-R66W	Wellbore	ONYX FEDERAL 1 AWB
Slot	SLOT#22 ONYX FEDERAL 1 (550'FNL & 254'FWL,SEC.26)		

### TARGETS

Name	TVD [ft]	North [ft]	East [ft]	Grid East [US ft]	Grid North [US ft]	Latitude	Longitude	Shape
SEC.25-T07N-R66W	-4.00	0.14	0.11	3207481.48	1444757.38	40.5518610	-104.7533500	polygon
	2D Polygon: dimensions not calculated							
SEC.26-T07N-R66W	-4.00	0.14	0.11	3207481.48	1444757.38	40.5518610	-104.7533500	polygon
	2D Polygon: dimensions not calculated							
SEC.30-T07N-R65W	-4.00	0.14	0.11	3207481.48	1444757.38	40.5518610	-104.7533500	polygon
	2D Polygon: dimensions not calculated							
ONYX FEDERAL DSU BOUNDARY	0.00	0.00	0.00	3207481.37	1444757.23	40.5518606	-104.7533504	polygon
	2D Polygon: dimensions not calculated							
ONYX FEDERAL WSU BOUNDARY	0.00	0.00	0.00	3207481.37	1444757.23	40.5518606	-104.7533504	polygon
	2D Polygon: dimensions not calculated							
ONYX FEDERAL 1 BHL REV-1(150'FNL & 150'FEL,SEC.30)	7249.00	369.78	15617.59	3223094.80	1445258.48	40.5528620	-104.6971500	point
ONYX FEDERAL 1 FED ENTRY POINT	7296.00	426.51	8786.17	3216263.36	1445257.69	40.5530270	-104.7217330	point
ONYX FEDERAL 1 FED EXIT POINT	7296.00	423.02	9213.29	3216690.48	1445257.80	40.5530170	-104.7201960	point
ONYX FEDERAL 1 LP REV-1(80'FNL & 1478'FWL,SEC.26)	7324.00	489.46	1220.88	3208698.04	1445256.94	40.5532040	-104.7489570	point

### WELLPATH COMPOSITION - Ref Wellbore: ONYX FEDERAL 1 AWB Ref Wellpath: ONYX FEDERAL 1 AWP

Start MD [ft]	End MD [ft]	Positional Uncertainty Model	Log Name/Comment	Wellbore	Survey Date
23.00	1669.00	OWSG MWD rev2 + IFR1 + Multi-Station Correction	OWSG MWD rev2+IFR1+MS 13-1/2" <139 - 1669>	ONYX FEDERAL 1 AWB	12/6/2023
1669.00	22185.00	OWSG MWD rev2 + IFR1 + Multi-Station Correction	OWSG MWD rev2+IFR1+MS 8-1/2" <1763 - 22100>	ONYX FEDERAL 1 AWB	12/6/2023

### REFERENCE WELLPATH IDENTIFICATION

Operator	BAYSWATER E&P, LLC	Well	ONYX FEDERAL 1
Field	WELD COUNTY (NAD83/TRUE NORTH)	API	0512352197
Facility	SEC.26-T07N-R66W	Wellbore	ONYX FEDERAL 1 AWB
Slot	SLOT#22 ONYX FEDERAL 1 (550'FNL & 254'FWL,SEC.26)		

### WELLPATH COMMENTS

MD [ft]	Inclination [°]	Azimuth [°]	TVD [ft]	Comment
139.00	0.360	233.850	139.00	FIRST BH SURFACE MWD SURVEY
1669.00	8.640	332.120	1661.32	LAST BH SURFACE MWD SURVEY
1763.00	8.290	330.670	1754.30	FIRST BH PRODUCTION MWD SURVEY
7730.00	90.280	87.730	7324.63	CROSS SETBACK HEEL (77'FNL & 1478'FWL,SEC.26)
22100.00	90.580	89.760	7254.91	LAST BH PRODUCTION MWD SURVEY
22129.00	90.580	89.760	7254.61	CROSS SETBACK TOE (149'FNL & 150'FEL,SEC.30)
22185.00	90.580	89.760	7254.05	PROJECTION TO BIT (148'FNL & 94'FEL,SEC.30)