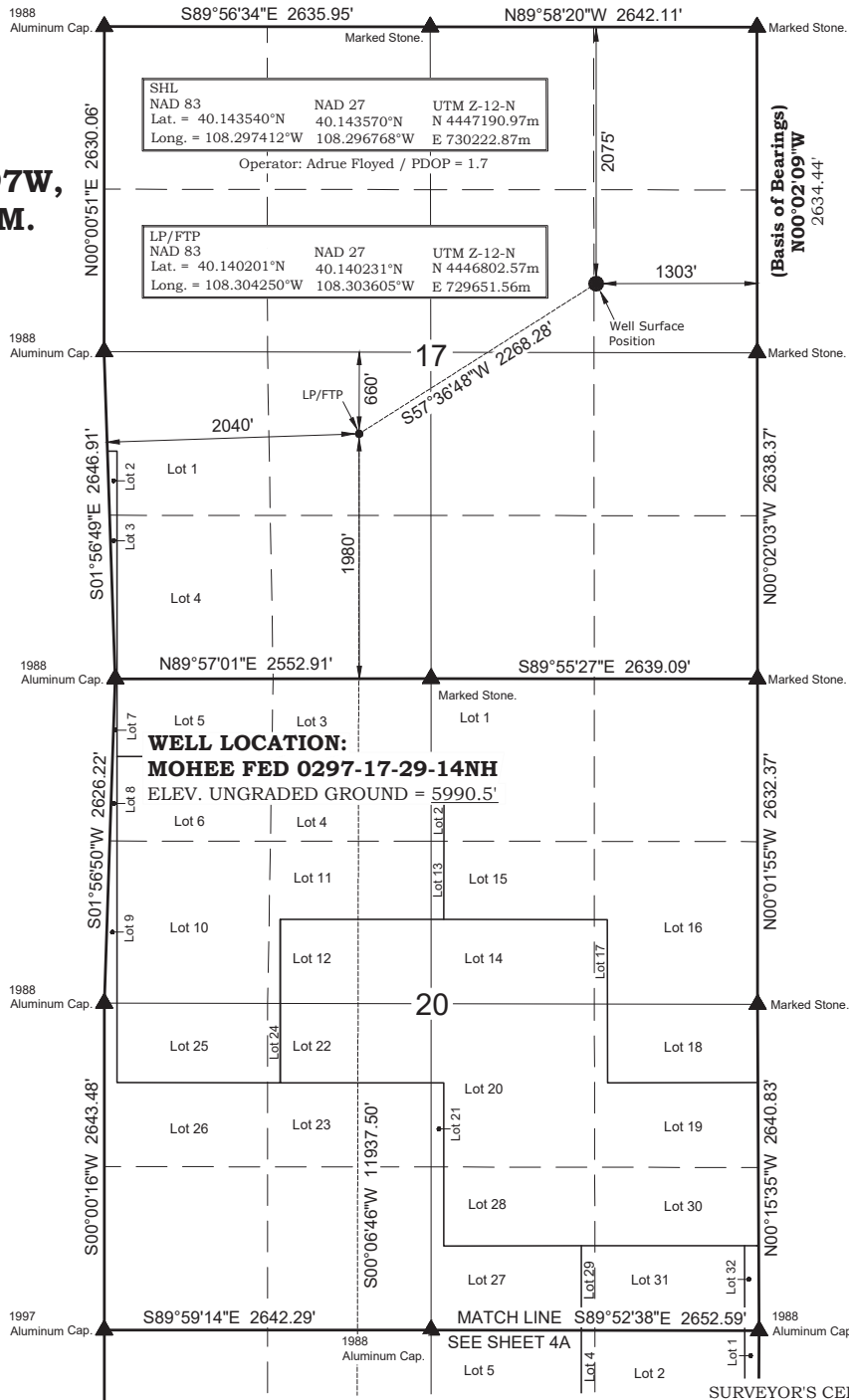


**T2N, R97W,  
6th P.M.**



SHL  
NAD 83                      NAD 27                      UTM Z-12-N  
Lat. = 40.143540°N      40.143570°N      N 4447190.97m  
Long. = 108.297412°W    108.296768°W    E 730222.87m  
Operator: Adrue Floyed / PDOP = 1.7

LP/FTP  
NAD 83                      NAD 27                      UTM Z-12-N  
Lat. = 40.140201°N      40.140231°N      N 4446802.57m  
Long. = 108.304250°W    108.303605°W    E 729651.56m

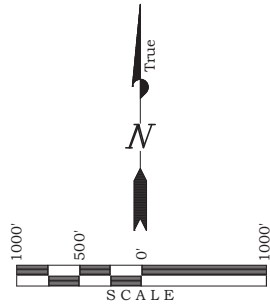
**WELL LOCATION:**  
**MOHEE FED 0297-17-29-14NH**  
ELEV. UNGRADED GROUND = 5990.5'

**NOTES:**

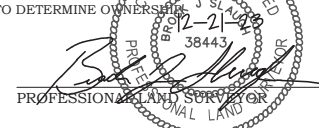
- ▲ = Section Corners Located
- △ = Section Corners Located Not Monumented
- 1. Well footages are measured at right angles to the Section Lines.
- 2. Bearings and distances shown on this plat are based upon a local Cartesian Grid which is oriented to Geodetic North at the SE Corner of Section 36, T2N, R97W, 6th P.M. The grid having a mean project height of 6,250'. Lineal units used are U.S. Survey Foot. Trimble G.P.S. equipment was used in performance of this survey.
- 3. Latitude and Longitude are NAD 83 (2011) Epoch 2010. Elevations are NAVD 88. Which are derived from an NGS OPUS Report.

**ANSCHUTZ  
EXPLORATION CORPORATION**  
555 17th Street, Suite 2400 - Denver, Colorado 80202

**WELL PLAT**  
**MOHEE FED 0297-17-29-14NH**  
**600' FSL & 2040' FWL (Bottom Hole)**  
**SE ¼ SW ¼ OF SECTION 29, T2N, R97W,**  
**6th P.M., RIO BLANCO COUNTY, COLORADO**

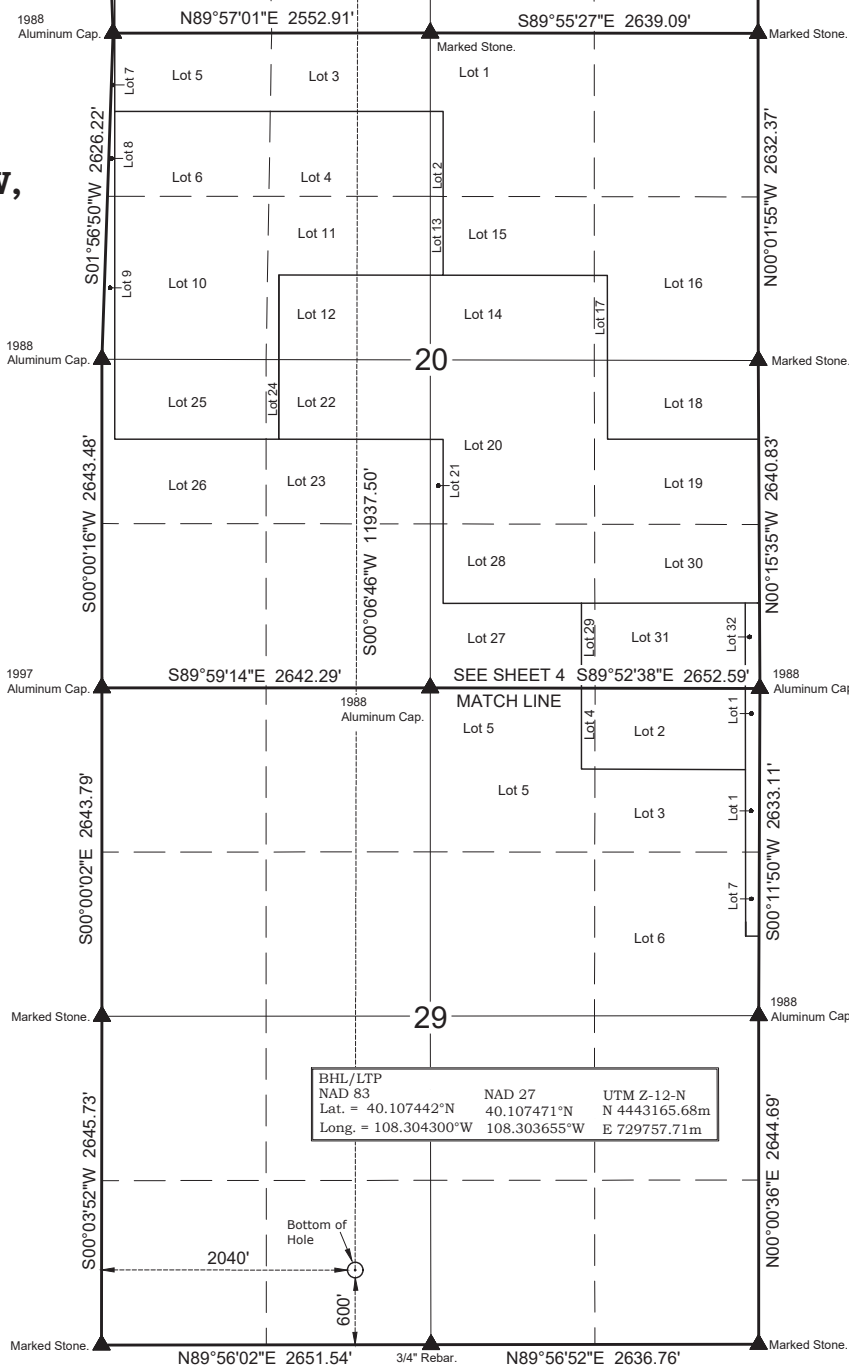


**SURVEYOR'S CERTIFICATE**  
I, BROCK J. SLAUGH, DO HEREBY CERTIFY THAT I AM A PROFESSIONAL LAND SURVEYOR AND THAT I HOLD CERTIFICATE #38443 AS PRESCRIBED BY THE LAWS OF THE STATE OF COLORADO. I FURTHER CERTIFY THAT THIS PLAT AND ITS COMPUTATIONS AND FIELD SURVEYS NECESSARY FOR THE DATA COMPILED HEREON WERE MADE BY ME OR UNDER MY SUPERVISION AND THE SAME ARE TRUE AND CORRECT TO THE BEST OF MY KNOWLEDGE AND BELIEF; THAT THE SURVEY WAS PERFORMED IN ACCORDANCE WITH APPLICABLE STANDARDS OF PRACTICE AND I DO NOT MAKE A GUARANTY OR WARRANTY, EITHER EXPRESSED OR IMPLIED, BY THIS CERTIFICATE DOES NOT REPRESENT A LAND SURVEY PLAT OR IMPROVEMENT SURVEY PLAT AS DEFINED BY C.R.S. § 5-1-102. THIS CERTIFICATE CANNOT BE RELIED UPON TO DETERMINE OWNERSHIP.



<b>TIMBERLINE</b>		
ENGINEERING & LAND SURVEYING, INC. 209 NORTH 300 WEST - VERNAL, UTAH 84078		
DATE SURVEYED: 7-11-23	SURVEYED BY: C.S.	SHEET <b>4</b>
DATE DRAWN: 8-29-23	DRAWN BY: S.A.	
SCALE: 1" = 1000'	Date Last Revised: 12-21-23 S.A.	OF 39

**T2N, R97W,  
6th P.M.**



BHL/LTP	NAD 83	NAD 27	UTM Z-12-N
Lat. = 40.107442°N	40.107442°N	40.107471°N	N 4443165.68m
Long. = 108.304300°W	108.303655°W	E 729757.71m	

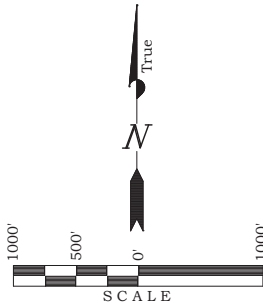
**NOTES:**

- ▲ = Section Corners Located
- △ = Section Corners Located Not Monumented
- 1. Well footages are measured at right angles to the Section Lines.
- 2. Bearings and distances shown on this plat are based upon a local Cartesian Grid which is oriented to Geodetic North at the SE Corner of Section 36, T2N, R97W, 6th P.M. The grid having a mean project height of 6,250'. Lineal units used are U.S. Survey Foot. Trimble G.P.S. equipment was used in performance of this survey.
- 3. Latitude and Longitude are NAD 83 (2011) Epoch 2010. Elevations are NAVD 88. Which are derived from an NGS OPUS Report.

**ANSCHUTZ  
EXPLORATION CORPORATION**  
555 17th Street, Suite 2400 - Denver, Colorado 80202

**WELL PLAT**

**MOHEE FED 0297-17-29-14NH  
600' FSL & 2040' FWL (Bottom Hole)  
SE ¼ SW ¼ OF SECTION 29, T2N, R97W,  
6th P.M., RIO BLANCO COUNTY, COLORADO**



**SURVEYOR'S CERTIFICATE**

I, BROCK J. SLAUGH, DO HEREBY CERTIFY THAT I AM A PROFESSIONAL LAND SURVEYOR AND THAT I HOLD CERTIFICATE #38443 AS PRESCRIBED BY THE LAWS OF THE STATE OF COLORADO. I FURTHER CERTIFY THAT THIS PLAT AND ITS COMPUTATIONS AND FIELD SURVEYS NECESSARY FOR THE DATA COMPILED HEREON WERE MADE BY ME OR UNDER MY SUPERVISION AND THE SAME ARE TRUE AND CORRECT TO THE BEST OF MY KNOWLEDGE AND BELIEF; THAT THE SURVEY WAS PERFORMED IN ACCORDANCE WITH APPLICABLE STANDARDS OF PRACTICE AND I DO NOT MAKE A GUARANTY OR WARRANTY, EITHER EXPRESSED OR IMPLIED, THIS CERTIFICATE DOES NOT REPRESENT A LAND SURVEY PLAT OR IMPROVEMENT SURVEY PLAT AS DEFINED BY C.R.S. § 5-5-102 AND CANNOT BE RELIED UPON TO DETERMINE OWNERSHIP.

*Brock J. Slough*  
PROFESSIONAL LAND SURVEYOR  
38443  
7-11-23

<b>TIMBERLINE</b>		
ENGINEERING & LAND SURVEYING, INC. 209 NORTH 300 WEST - VERNAL, UTAH 84078		
DATE SURVEYED: 7-11-23	SURVEYED BY: C.S.	SHEET
DATE DRAWN: 8-29-23	DRAWN BY: S.A.	<b>4A</b>
SCALE: 1" = 1000'	Date Last Revised: 12-21-23 S.A.	OF 39