

Chevron DJ Basin

GEORGE 17N

George Pad

North American Datum 1983 , US State Plane 1983, Colorado Northern Zone

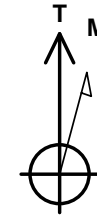
Ground Elevation: 4718.0

+N/-S	+E/-W	Northing	Easting	Latitude	Longitude
0.0	0.0	1353469.08	3263765.52	40.299812	-104.554321

T41 - RKB 25' Well @ 4743.0ft (T41 - RKB 25')



George Pad
GEORGE 17N
George 17N Final Surveys
12:50, April 29 2024



Azimuths to True North
Magnetic North: 7.65°

Magnetic Field
Strength: 51602.3nT
Dip Angle: 66.53°
Date: 04/04/2024
Model: HRGM

ANNOTATIONS

MD	TVD	Annotation
7862.0	6705.0	LPL - 1652' FSL & 798' FEL
17397.0	6752.1	BHL - 1662' FSL & 206' FWL

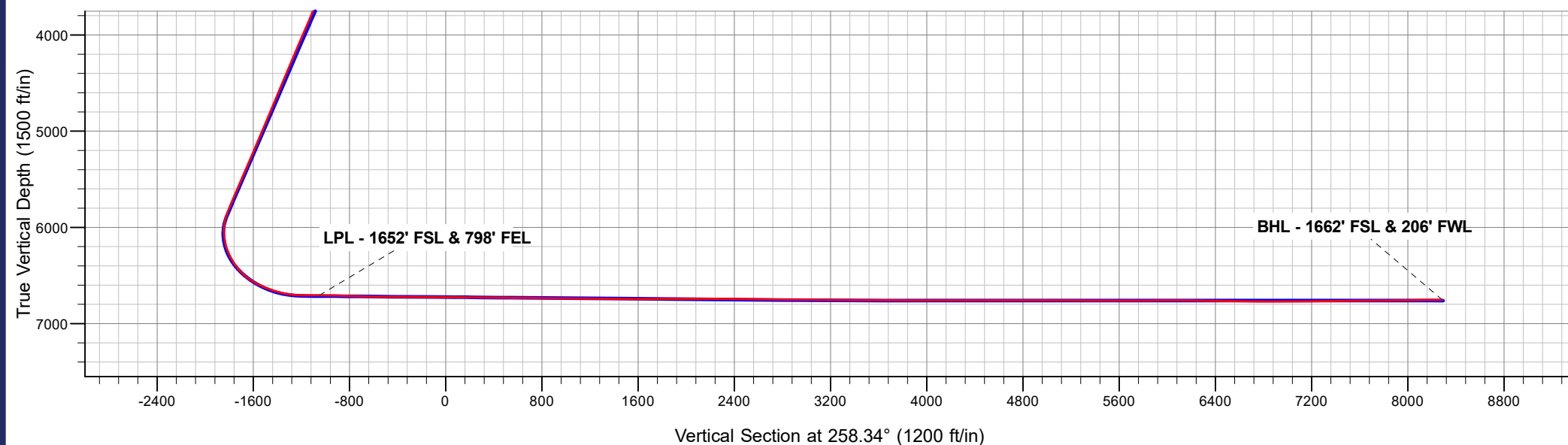
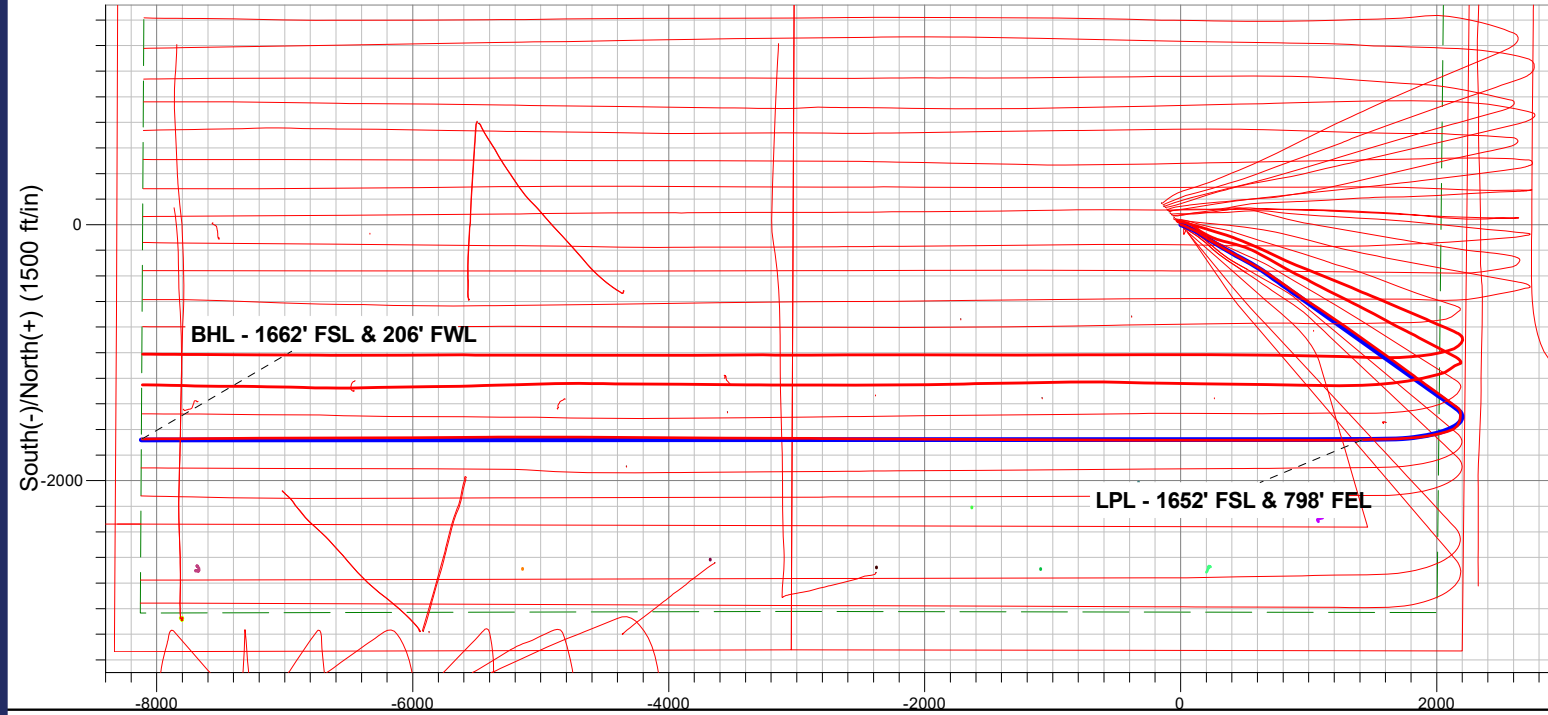
FINAL SURVEY

Projected Bottom Hole Location

17397.0' MD / 6752.1' TVD

90.63° INC / 269.67° AZM

1662' FSL / 206' FWL



Chevron DJ Basin

SEC.21-T4N-R64W

George Pad

GEORGE 17N

George 17N

Design: George 17N Final Surveys

Survey Report - Geographic

29 April, 2024

Ensign

Survey Report - Geographic

Company: Chevron DJ Basin	Local Co-ordinate Reference: Well GEORGE 17N
Project: SEC.21-T4N-R64W	TVD Reference: Well @ 4743.0ft (T41 - RKB 25')
Site: George Pad	MD Reference: Well @ 4743.0ft (T41 - RKB 25')
Well: GEORGE 17N	North Reference: True
Wellbore: George 17N	Survey Calculation Method: Minimum Curvature
Design: George 17N Final Surveys	Database: US_EDM

Project SEC.21-T4N-R64W, Weld County, CO			
Map System: US State Plane 1983	System Datum: Mean Sea Level		
Geo Datum: North American Datum 1983			
Map Zone: Colorado Northern Zone		Using geodetic scale factor	

Site George Pad			
Site Position:	Northing: 1,353,524.28 usft	Latitude: 40.299965	
From: Lat/Long	Easting: 3,263,715.11 usft	Longitude: -104.554500	
Position Uncertainty: 0.0 ft	Slot Radius: 13-3/16 "	Grid Convergence: 0.61 °	

Well GEORGE 17N					
Well Position	+N/-S 0.0 ft	Northing: 1,353,469.08 usft	Latitude: 40.299812		
	+E/-W 0.0 ft	Easting: 3,263,765.52 usft	Longitude: -104.554322		
Position Uncertainty	0.0 ft	Wellhead Elevation: ft	Ground Level: 4,718.0 ft		

Wellbore George 17N					
Magnetics	Model Name	Sample Date	Declination (°)	Dip Angle (°)	Field Strength (nT)
	HRGM	04/04/2024	7.65	66.53	51,602.33353710

Design George 17N Final Surveys					
Audit Notes:					
Version: 1.0	Phase: ACTUAL	Tie On Depth: 0.0			
Vertical Section:	Depth From (TVD) (ft)	+N/-S (ft)	+E/-W (ft)	Direction (°)	
	0.0	0.0	0.0	258.34	

Survey Program Date 04/29/2024					
From (ft)	To (ft)	Survey (Wellbore)	Tool Name	Description	
208.0	17,397.0	Survey #1 (George 17N)	MWD+IFR1+SAG+MS	OWSG MWD + IFR1 + Sag + Multi-Station Corre	

Survey										
Measured Depth (ft)	Inclination (°)	Azimuth (°)	Vertical Depth (ft)	+N/-S (ft)	+E/-W (ft)	Map Northing (usft)	Map Easting (usft)	Latitude	Longitude	
0.0	0.00	0.00	0.0	0.0	0.0	1,353,469.08	3,263,765.52	40.299812	-104.554322	
208.0	0.09	23.48	208.0	0.1	0.1	1,353,469.23	3,263,765.58	40.299812	-104.554321	
300.0	2.73	117.00	300.0	-0.8	2.0	1,353,468.32	3,263,767.57	40.299810	-104.554314	
394.0	4.84	110.14	393.8	-3.2	7.8	1,353,466.00	3,263,773.32	40.299803	-104.554294	
488.0	6.24	108.56	487.3	-6.2	16.3	1,353,463.10	3,263,781.92	40.299795	-104.554263	
582.0	6.77	105.92	580.7	-9.3	26.5	1,353,460.06	3,263,792.12	40.299787	-104.554227	
677.0	8.88	112.43	674.8	-13.6	38.7	1,353,455.86	3,263,804.33	40.299775	-104.554183	
771.0	10.38	115.94	767.5	-20.1	53.0	1,353,449.54	3,263,818.72	40.299757	-104.554132	
864.0	13.28	114.71	858.5	-28.2	70.2	1,353,441.59	3,263,836.04	40.299735	-104.554070	
958.0	15.56	114.36	949.5	-38.0	91.5	1,353,432.11	3,263,857.44	40.299708	-104.553994	
1,052.0	18.64	116.29	1,039.4	-49.8	116.5	1,353,420.52	3,263,882.52	40.299675	-104.553904	
1,145.0	21.98	120.16	1,126.6	-65.1	144.9	1,353,405.49	3,263,911.07	40.299633	-104.553802	

Ensign

Survey Report - Geographic

Company:	Chevron DJ Basin	Local Co-ordinate Reference:	Well GEORGE 17N
Project:	SEC.21-T4N-R64W	TVD Reference:	Well @ 4743.0ft (T41 - RKB 25')
Site:	George Pad	MD Reference:	Well @ 4743.0ft (T41 - RKB 25')
Well:	GEORGE 17N	North Reference:	True
Wellbore:	George 17N	Survey Calculation Method:	Minimum Curvature
Design:	George 17N Final Surveys	Database:	US_EDM

Survey										
Measured Depth (ft)	Inclination (°)	Azimuth (°)	Vertical Depth (ft)	+N/-S (ft)	+E/-W (ft)	Map Northing (usft)	Map Easting (usft)	Latitude	Longitude	
1,239.0	22.51	124.03	1,213.6	-84.0	175.0	1,353,386.90	3,263,941.39	40.299581	-104.553694	
1,333.0	21.37	125.61	1,300.8	-104.1	203.8	1,353,367.17	3,263,970.44	40.299526	-104.553591	
1,428.0	24.18	121.74	1,388.4	-124.4	234.5	1,353,347.18	3,264,001.28	40.299471	-104.553481	
1,522.0	28.23	119.81	1,472.7	-145.6	270.1	1,353,326.37	3,264,037.18	40.299412	-104.553353	
1,616.0	29.11	121.39	1,555.2	-168.6	308.9	1,353,303.83	3,264,076.23	40.299349	-104.553214	
1,710.0	30.07	119.98	1,636.9	-192.2	348.9	1,353,280.58	3,264,116.40	40.299284	-104.553071	
1,804.0	30.60	120.51	1,718.0	-216.2	389.9	1,353,257.10	3,264,157.66	40.299219	-104.552924	
1,897.0	31.74	118.58	1,797.6	-239.9	431.7	1,353,233.83	3,264,199.78	40.299154	-104.552774	
2,048.0	31.81	118.14	1,926.0	-277.6	501.7	1,353,196.81	3,264,270.15	40.299050	-104.552523	
2,142.0	28.93	116.75	2,007.1	-299.6	543.9	1,353,175.34	3,264,312.54	40.298990	-104.552372	
2,236.0	29.54	120.91	2,089.1	-321.7	584.1	1,353,153.63	3,264,352.96	40.298929	-104.552228	
2,330.0	28.70	119.09	2,171.2	-344.6	623.7	1,353,131.18	3,264,392.80	40.298866	-104.552086	
2,423.0	28.39	124.82	2,252.9	-368.1	661.3	1,353,108.10	3,264,430.72	40.298802	-104.551951	
2,517.0	28.50	122.09	2,335.6	-392.7	698.7	1,353,083.82	3,264,468.33	40.298734	-104.551817	
2,611.0	28.40	125.70	2,418.3	-417.7	735.8	1,353,059.26	3,264,505.75	40.298665	-104.551684	
2,705.0	27.72	123.28	2,501.2	-442.7	772.3	1,353,034.61	3,264,542.44	40.298597	-104.551553	
2,800.0	26.22	126.72	2,585.9	-467.4	807.6	1,353,010.32	3,264,578.00	40.298529	-104.551426	
2,894.0	27.50	126.61	2,669.7	-492.8	841.6	1,352,985.32	3,264,612.33	40.298459	-104.551304	
2,987.0	26.49	123.51	2,752.6	-517.0	876.2	1,352,961.44	3,264,647.12	40.298393	-104.551181	
3,081.0	27.62	125.79	2,836.3	-541.4	911.3	1,352,937.49	3,264,682.53	40.298326	-104.551055	
3,174.0	27.18	125.18	2,918.9	-566.2	946.2	1,352,913.02	3,264,717.64	40.298258	-104.550930	
3,268.0	27.24	123.09	3,002.5	-590.3	981.8	1,352,889.29	3,264,753.47	40.298192	-104.550802	
3,362.0	26.90	121.48	3,086.2	-613.2	1,017.9	1,352,866.83	3,264,789.87	40.298129	-104.550672	
3,456.0	26.12	124.35	3,170.3	-635.9	1,053.1	1,352,844.43	3,264,825.33	40.298066	-104.550546	
3,550.0	26.37	125.31	3,254.6	-659.7	1,087.3	1,352,821.05	3,264,859.69	40.298001	-104.550424	
3,645.0	27.04	124.03	3,339.5	-684.0	1,122.4	1,352,797.15	3,264,895.06	40.297935	-104.550298	
3,739.0	26.75	121.68	3,423.3	-707.0	1,158.1	1,352,774.46	3,264,931.02	40.297871	-104.550170	
3,832.0	25.89	125.02	3,506.7	-729.7	1,192.5	1,352,752.19	3,264,965.70	40.297809	-104.550047	
3,926.0	26.60	125.66	3,591.0	-753.7	1,226.4	1,352,728.51	3,264,999.86	40.297743	-104.549925	
4,021.0	27.30	126.49	3,675.7	-779.1	1,261.2	1,352,703.52	3,265,034.92	40.297673	-104.549800	
4,114.0	26.06	124.18	3,758.8	-803.2	1,295.3	1,352,679.73	3,265,069.22	40.297607	-104.549678	
4,208.0	26.11	125.01	3,843.2	-826.7	1,329.3	1,352,656.63	3,265,103.49	40.297543	-104.549556	
4,302.0	26.51	123.42	3,927.5	-850.1	1,363.7	1,352,633.57	3,265,138.19	40.297478	-104.549433	
4,396.0	26.60	125.17	4,011.6	-873.8	1,398.5	1,352,610.27	3,265,173.15	40.297413	-104.549308	
4,490.0	26.45	124.95	4,095.7	-897.9	1,432.8	1,352,586.53	3,265,207.77	40.297347	-104.549185	
4,584.0	26.83	125.08	4,179.7	-922.1	1,467.3	1,352,562.71	3,265,242.54	40.297281	-104.549061	
4,678.0	26.74	127.31	4,263.6	-947.1	1,501.5	1,352,538.07	3,265,276.98	40.297212	-104.548939	
4,771.0	26.46	124.43	4,346.8	-971.5	1,535.2	1,352,514.03	3,265,310.97	40.297145	-104.548818	
4,864.0	25.89	126.63	4,430.2	-995.3	1,568.6	1,352,490.56	3,265,344.61	40.297080	-104.548698	
4,958.0	26.92	126.51	4,514.4	-1,020.3	1,602.2	1,352,466.02	3,265,378.44	40.297011	-104.548578	
5,052.0	26.46	126.95	4,598.4	-1,045.5	1,636.0	1,352,441.13	3,265,412.55	40.296942	-104.548457	
5,146.0	26.33	126.68	4,682.6	-1,070.5	1,669.5	1,352,416.45	3,265,446.27	40.296873	-104.548337	
5,239.0	26.40	125.48	4,765.9	-1,094.9	1,702.9	1,352,392.49	3,265,479.90	40.296807	-104.548217	
5,333.0	27.23	126.29	4,849.8	-1,119.7	1,737.2	1,352,368.00	3,265,514.51	40.296738	-104.548094	
5,426.0	27.00	126.79	4,932.6	-1,145.0	1,771.3	1,352,343.13	3,265,548.84	40.296669	-104.547972	
5,520.0	27.27	125.00	5,016.2	-1,170.1	1,806.0	1,352,318.37	3,265,583.83	40.296600	-104.547847	
5,613.0	26.29	127.13	5,099.3	-1,194.7	1,839.9	1,352,294.08	3,265,617.96	40.296532	-104.547726	
5,707.0	26.98	125.66	5,183.3	-1,219.7	1,873.8	1,352,269.45	3,265,652.15	40.296464	-104.547604	
5,800.0	27.32	126.01	5,266.1	-1,244.6	1,908.2	1,352,244.97	3,265,686.81	40.296396	-104.547481	
5,894.0	27.17	125.38	5,349.6	-1,269.7	1,943.2	1,352,220.24	3,265,722.03	40.296327	-104.547356	
5,987.0	26.69	124.83	5,432.5	-1,293.9	1,977.6	1,352,196.38	3,265,756.74	40.296260	-104.547232	
6,079.0	26.75	127.25	5,514.7	-1,318.2	2,011.1	1,352,172.41	3,265,790.44	40.296193	-104.547112	
6,173.0	27.24	126.27	5,598.5	-1,343.8	2,045.2	1,352,147.24	3,265,824.89	40.296123	-104.546990	
6,267.0	26.89	126.29	5,682.2	-1,369.1	2,079.7	1,352,122.31	3,265,859.63	40.296054	-104.546866	
6,361.0	26.98	126.24	5,766.0	-1,394.3	2,114.1	1,352,097.49	3,265,894.23	40.295985	-104.546743	

Ensign

Survey Report - Geographic

Company:	Chevron DJ Basin	Local Co-ordinate Reference:	Well GEORGE 17N
Project:	SEC.21-T4N-R64W	TVD Reference:	Well @ 4743.0ft (T41 - RKB 25')
Site:	George Pad	MD Reference:	Well @ 4743.0ft (T41 - RKB 25')
Well:	GEORGE 17N	North Reference:	True
Wellbore:	George 17N	Survey Calculation Method:	Minimum Curvature
Design:	George 17N Final Surveys	Database:	US_EDM

Survey									
Measured Depth (ft)	Inclination (°)	Azimuth (°)	Vertical Depth (ft)	+N/-S (ft)	+E/-W (ft)	Map Northing (usft)	Map Easting (usft)	Latitude	Longitude
6,455.0	24.15	125.51	5,850.8	-1,418.1	2,146.9	1,352,074.06	3,265,927.34	40.295919	-104.546625
6,549.0	17.80	136.67	5,938.5	-1,439.7	2,172.5	1,352,052.69	3,265,953.11	40.295860	-104.546534
6,642.0	14.38	169.10	6,028.1	-1,461.4	2,184.4	1,352,031.09	3,265,965.31	40.295800	-104.546491
6,736.0	22.62	182.54	6,117.2	-1,491.0	2,185.8	1,352,001.52	3,265,967.03	40.295719	-104.546486
6,830.0	28.27	194.07	6,202.1	-1,530.7	2,179.6	1,351,961.75	3,265,961.24	40.295610	-104.546508
6,923.0	28.11	214.77	6,284.2	-1,570.2	2,161.7	1,351,922.11	3,265,943.77	40.295502	-104.546572
7,017.0	26.20	243.17	6,368.2	-1,597.9	2,130.4	1,351,894.10	3,265,912.79	40.295426	-104.546684
7,110.0	35.89	252.67	6,447.8	-1,615.3	2,086.0	1,351,876.19	3,265,868.50	40.295378	-104.546844
7,204.0	46.18	255.10	6,518.7	-1,632.3	2,026.7	1,351,858.59	3,265,809.45	40.295331	-104.547056
7,298.0	55.32	260.46	6,578.1	-1,647.4	1,955.7	1,351,842.66	3,265,738.55	40.295290	-104.547311
7,392.0	63.74	263.39	6,625.7	-1,658.7	1,875.5	1,351,830.53	3,265,658.54	40.295259	-104.547598
7,486.0	68.48	265.57	6,663.8	-1,667.0	1,790.0	1,351,821.39	3,265,573.12	40.295236	-104.547905
7,580.0	77.57	267.56	6,691.2	-1,672.3	1,700.4	1,351,815.09	3,265,483.54	40.295222	-104.548226
7,674.0	85.56	268.60	6,705.0	-1,675.4	1,607.5	1,351,810.99	3,265,390.72	40.295213	-104.548559
7,767.0	93.18	268.82	6,706.0	-1,677.5	1,514.6	1,351,807.91	3,265,297.85	40.295207	-104.548892
7,862.0	87.98	268.36	6,705.0	-1,679.8	1,419.7	1,351,804.56	3,265,202.95	40.295201	-104.549232
LPL - 1652' FSL & 798' FEL									
7,957.0	88.30	268.21	6,708.1	-1,682.7	1,324.8	1,351,800.71	3,265,108.09	40.295193	-104.549573
8,050.0	88.12	269.34	6,711.0	-1,684.7	1,231.8	1,351,797.73	3,265,015.19	40.295188	-104.549906
8,143.0	88.20	270.31	6,714.0	-1,684.9	1,138.9	1,351,796.46	3,264,922.25	40.295187	-104.550239
8,237.0	87.94	269.88	6,717.2	-1,684.8	1,044.9	1,351,795.61	3,264,828.31	40.295187	-104.550576
8,331.0	89.22	270.10	6,719.5	-1,684.8	951.0	1,351,794.59	3,264,734.35	40.295187	-104.550913
8,425.0	89.37	270.14	6,720.7	-1,684.6	857.0	1,351,793.79	3,264,640.36	40.295188	-104.551250
8,519.0	89.43	270.11	6,721.7	-1,684.4	763.0	1,351,792.99	3,264,546.38	40.295188	-104.551587
8,614.0	89.52	270.20	6,722.5	-1,684.1	668.0	1,351,792.23	3,264,451.39	40.295189	-104.551927
8,708.0	89.33	269.92	6,723.5	-1,684.0	574.0	1,351,791.33	3,264,357.40	40.295189	-104.552264
8,802.0	89.38	270.04	6,724.5	-1,684.1	480.0	1,351,790.29	3,264,263.42	40.295189	-104.552601
8,895.0	89.56	269.84	6,725.4	-1,684.2	387.0	1,351,789.20	3,264,170.43	40.295189	-104.552934
8,988.0	89.15	269.96	6,726.4	-1,684.3	294.0	1,351,788.05	3,264,077.45	40.295189	-104.553268
9,083.0	89.29	270.08	6,727.7	-1,684.3	199.0	1,351,787.07	3,263,982.47	40.295189	-104.553608
9,176.0	89.58	270.00	6,728.6	-1,684.2	106.0	1,351,786.14	3,263,889.48	40.295189	-104.553942
9,270.0	89.49	270.36	6,729.4	-1,683.9	12.0	1,351,785.44	3,263,795.49	40.295190	-104.554279
9,363.0	89.35	269.86	6,730.3	-1,683.8	-81.0	1,351,784.62	3,263,702.50	40.295190	-104.554612
9,457.0	89.26	270.07	6,731.5	-1,683.8	-175.0	1,351,783.56	3,263,608.52	40.295190	-104.554949
9,550.0	89.27	269.90	6,732.7	-1,683.8	-268.0	1,351,782.55	3,263,515.54	40.295190	-104.555282
9,644.0	89.16	270.27	6,734.0	-1,683.7	-362.0	1,351,781.68	3,263,421.56	40.295190	-104.555619
9,738.0	89.19	270.15	6,735.3	-1,683.4	-455.9	1,351,781.03	3,263,327.57	40.295191	-104.555956
9,832.0	89.17	270.18	6,736.7	-1,683.1	-549.9	1,351,780.29	3,263,233.59	40.295192	-104.556293
9,925.0	89.46	270.47	6,737.8	-1,682.6	-642.9	1,351,779.83	3,263,140.60	40.295194	-104.556626
10,020.0	89.35	270.31	6,738.8	-1,681.9	-737.9	1,351,779.46	3,263,045.61	40.295195	-104.556967
10,113.0	89.59	270.31	6,739.6	-1,681.4	-830.9	1,351,778.98	3,262,952.62	40.295197	-104.557300
10,207.0	89.26	270.36	6,740.6	-1,680.9	-924.9	1,351,778.52	3,262,858.63	40.295198	-104.557637
10,301.0	89.20	270.30	6,741.8	-1,680.3	-1,018.9	1,351,778.06	3,262,764.64	40.295200	-104.557974
10,395.0	89.15	270.48	6,743.2	-1,679.7	-1,112.9	1,351,777.70	3,262,670.66	40.295201	-104.558311
10,489.0	90.25	270.40	6,743.7	-1,679.0	-1,206.9	1,351,777.42	3,262,576.67	40.295203	-104.558648
10,582.0	90.20	270.22	6,743.3	-1,678.5	-1,299.9	1,351,776.93	3,262,483.67	40.295205	-104.558982
10,676.0	90.17	270.06	6,743.0	-1,678.2	-1,393.9	1,351,776.16	3,262,389.68	40.295205	-104.559318
10,770.0	89.95	269.94	6,742.9	-1,678.2	-1,487.9	1,351,775.15	3,262,295.69	40.295205	-104.559655
10,865.0	90.27	270.35	6,742.7	-1,678.0	-1,582.9	1,351,774.38	3,262,200.70	40.295206	-104.559996
10,958.0	90.46	270.22	6,742.1	-1,677.5	-1,675.9	1,351,773.85	3,262,107.71	40.295207	-104.560329
11,052.0	90.69	270.04	6,741.2	-1,677.3	-1,769.9	1,351,773.06	3,262,013.72	40.295208	-104.560666
11,146.0	89.06	270.39	6,741.4	-1,677.0	-1,863.9	1,351,772.41	3,261,919.73	40.295209	-104.561003
11,239.0	88.96	270.54	6,743.0	-1,676.2	-1,956.8	1,351,772.18	3,261,826.75	40.295211	-104.561337
11,334.0	89.44	270.21	6,744.3	-1,675.6	-2,051.8	1,351,771.79	3,261,731.76	40.295212	-104.561677
11,428.0	89.29	270.45	6,745.4	-1,675.0	-2,145.8	1,351,771.33	3,261,637.77	40.295214	-104.562014

Ensign

Survey Report - Geographic

Company:	Chevron DJ Basin	Local Co-ordinate Reference:	Well GEORGE 17N
Project:	SEC.21-T4N-R64W	TVD Reference:	Well @ 4743.0ft (T41 - RKB 25')
Site:	George Pad	MD Reference:	Well @ 4743.0ft (T41 - RKB 25')
Well:	GEORGE 17N	North Reference:	True
Wellbore:	George 17N	Survey Calculation Method:	Minimum Curvature
Design:	George 17N Final Surveys	Database:	US_EDM

Survey									
Measured Depth (ft)	Inclination (°)	Azimuth (°)	Vertical Depth (ft)	+N/-S (ft)	+E/-W (ft)	Map Northing (usft)	Map Easting (usft)	Latitude	Longitude
11,523.0	89.49	270.15	6,746.4	-1,674.5	-2,240.8	1,351,770.81	3,261,542.78	40.295215	-104.562355
11,617.0	89.47	270.36	6,747.2	-1,674.1	-2,334.8	1,351,770.23	3,261,448.79	40.295216	-104.562692
11,711.0	89.37	270.17	6,748.2	-1,673.7	-2,428.8	1,351,769.66	3,261,354.80	40.295218	-104.563029
11,805.0	89.23	270.65	6,749.3	-1,673.0	-2,522.8	1,351,769.33	3,261,260.82	40.295219	-104.563365
11,899.0	89.28	270.77	6,750.6	-1,671.9	-2,616.8	1,351,769.49	3,261,166.83	40.295223	-104.563702
11,993.0	89.27	270.13	6,751.7	-1,671.1	-2,710.8	1,351,769.23	3,261,072.84	40.295225	-104.564039
12,087.0	89.40	270.29	6,752.8	-1,670.8	-2,804.8	1,351,768.57	3,260,978.85	40.295225	-104.564376
12,181.0	89.14	270.75	6,754.0	-1,669.9	-2,898.8	1,351,768.42	3,260,884.87	40.295228	-104.564713
12,275.0	89.80	270.09	6,754.9	-1,669.2	-2,992.7	1,351,768.11	3,260,790.88	40.295230	-104.565050
12,368.0	88.94	270.52	6,755.9	-1,668.7	-3,085.7	1,351,767.61	3,260,697.89	40.295231	-104.565384
12,462.0	89.57	270.55	6,757.2	-1,667.9	-3,179.7	1,351,767.48	3,260,603.90	40.295233	-104.565720
12,556.0	89.61	270.12	6,757.8	-1,667.3	-3,273.7	1,351,767.03	3,260,509.91	40.295235	-104.566057
12,650.0	90.02	270.31	6,758.1	-1,667.0	-3,367.7	1,351,766.38	3,260,415.92	40.295236	-104.566394
12,743.0	90.10	270.06	6,758.0	-1,666.7	-3,460.7	1,351,765.69	3,260,322.92	40.295237	-104.566728
12,836.0	90.08	270.41	6,757.9	-1,666.3	-3,553.7	1,351,765.08	3,260,229.93	40.295238	-104.567061
12,930.0	90.03	270.28	6,757.8	-1,665.7	-3,647.7	1,351,764.64	3,260,135.94	40.295239	-104.567398
13,024.0	90.32	270.43	6,757.5	-1,665.1	-3,741.7	1,351,764.22	3,260,041.94	40.295241	-104.567735
13,118.0	89.73	270.10	6,757.5	-1,664.7	-3,835.7	1,351,763.66	3,259,947.95	40.295242	-104.568072
13,212.0	89.93	270.39	6,757.7	-1,664.3	-3,929.7	1,351,763.06	3,259,853.95	40.295243	-104.568409
13,306.0	90.08	270.09	6,757.7	-1,663.9	-4,023.7	1,351,762.45	3,259,759.96	40.295244	-104.568746
13,399.0	89.87	270.36	6,757.8	-1,663.5	-4,116.7	1,351,761.82	3,259,666.97	40.295245	-104.569079
13,493.0	90.37	270.16	6,757.6	-1,663.1	-4,210.7	1,351,761.24	3,259,572.97	40.295246	-104.569416
13,587.0	89.65	270.47	6,757.6	-1,662.6	-4,304.7	1,351,760.76	3,259,478.98	40.295247	-104.569753
13,681.0	90.02	269.94	6,757.8	-1,662.2	-4,398.7	1,351,760.09	3,259,384.99	40.295248	-104.570090
13,775.0	89.63	270.78	6,758.1	-1,661.7	-4,492.7	1,351,759.68	3,259,290.99	40.295250	-104.570427
13,869.0	89.74	270.77	6,758.6	-1,660.4	-4,586.7	1,351,759.95	3,259,197.00	40.295253	-104.570764
13,962.0	90.45	270.57	6,758.5	-1,659.3	-4,679.7	1,351,760.05	3,259,104.00	40.295256	-104.571098
14,056.0	89.73	270.33	6,758.3	-1,658.6	-4,773.7	1,351,759.78	3,259,010.01	40.295258	-104.571435
14,149.0	90.01	270.81	6,758.5	-1,657.6	-4,866.7	1,351,759.71	3,258,917.02	40.295261	-104.571768
14,242.0	90.36	269.28	6,758.2	-1,657.6	-4,959.7	1,351,758.80	3,258,824.03	40.295261	-104.572101
14,337.0	89.60	270.21	6,758.3	-1,658.0	-5,054.7	1,351,757.36	3,258,729.04	40.295260	-104.572442
14,430.0	89.83	269.78	6,758.7	-1,658.0	-5,147.7	1,351,756.36	3,258,636.06	40.295260	-104.572775
14,524.0	89.49	269.78	6,759.3	-1,658.4	-5,241.7	1,351,755.00	3,258,542.07	40.295258	-104.573112
14,617.0	89.95	269.61	6,759.8	-1,658.8	-5,334.7	1,351,753.51	3,258,449.09	40.295257	-104.573446
14,710.0	89.53	269.23	6,760.2	-1,659.8	-5,427.7	1,351,751.58	3,258,356.11	40.295254	-104.573779
14,804.0	90.12	269.50	6,760.5	-1,660.8	-5,521.7	1,351,749.53	3,258,262.14	40.295251	-104.574116
14,898.0	89.90	269.52	6,760.4	-1,661.6	-5,615.6	1,351,747.73	3,258,168.16	40.295249	-104.574453
14,992.0	90.93	269.50	6,759.8	-1,662.4	-5,709.6	1,351,745.92	3,258,074.19	40.295247	-104.574790
15,087.0	90.87	270.21	6,758.3	-1,662.7	-5,804.6	1,351,744.67	3,257,979.21	40.295246	-104.575130
15,181.0	89.65	269.65	6,757.8	-1,662.8	-5,898.6	1,351,743.55	3,257,885.23	40.295246	-104.575467
15,274.0	89.33	269.77	6,758.7	-1,663.3	-5,991.6	1,351,742.09	3,257,792.25	40.295245	-104.575801
15,369.0	88.76	269.85	6,760.3	-1,663.6	-6,086.6	1,351,740.76	3,257,697.27	40.295244	-104.576141
15,463.0	88.43	269.74	6,762.6	-1,663.9	-6,180.6	1,351,739.42	3,257,603.32	40.295243	-104.576478
15,557.0	88.80	269.76	6,764.8	-1,664.3	-6,274.5	1,351,738.01	3,257,509.36	40.295241	-104.576815
15,651.0	88.69	269.89	6,766.9	-1,664.6	-6,368.5	1,351,736.72	3,257,415.39	40.295241	-104.577152
15,746.0	88.84	269.59	6,768.9	-1,665.0	-6,463.5	1,351,735.28	3,257,320.43	40.295239	-104.577492
15,839.0	88.56	269.86	6,771.1	-1,665.5	-6,556.5	1,351,733.84	3,257,227.47	40.295238	-104.577826
15,933.0	90.90	269.62	6,771.5	-1,665.9	-6,650.5	1,351,732.41	3,257,133.49	40.295237	-104.578162
16,027.0	90.67	269.78	6,770.2	-1,666.4	-6,744.5	1,351,730.92	3,257,039.52	40.295235	-104.578499
16,121.0	90.60	269.85	6,769.2	-1,666.7	-6,838.5	1,351,729.61	3,256,945.54	40.295234	-104.578836
16,215.0	90.56	269.93	6,768.2	-1,666.9	-6,932.4	1,351,728.43	3,256,851.55	40.295234	-104.579173
16,309.0	90.76	269.64	6,767.1	-1,667.2	-7,026.4	1,351,727.07	3,256,757.57	40.295233	-104.579510
16,404.0	90.69	269.63	6,765.9	-1,667.9	-7,121.4	1,351,725.45	3,256,662.60	40.295231	-104.579851
16,498.0	90.97	269.53	6,764.6	-1,668.5	-7,215.4	1,351,723.76	3,256,568.63	40.295229	-104.580188
16,592.0	90.89	269.71	6,763.0	-1,669.2	-7,309.4	1,351,722.14	3,256,474.66	40.295227	-104.580525

Ensign

Survey Report - Geographic

Company: Chevron DJ Basin	Local Co-ordinate Reference: Well GEORGE 17N
Project: SEC.21-T4N-R64W	TVD Reference: Well @ 4743.0ft (T41 - RKB 25')
Site: George Pad	MD Reference: Well @ 4743.0ft (T41 - RKB 25')
Well: GEORGE 17N	North Reference: True
Wellbore: George 17N	Survey Calculation Method: Minimum Curvature
Design: George 17N Final Surveys	Database: US_EDM

Survey									
Measured Depth (ft)	Inclination (°)	Azimuth (°)	Vertical Depth (ft)	+N/-S (ft)	+E/-W (ft)	Map Northing (usft)	Map Easting (usft)	Latitude	Longitude
16,685.0	90.57	269.84	6,761.9	-1,669.5	-7,402.4	1,351,720.78	3,256,381.68	40.295226	-104.580858
16,778.0	90.86	269.70	6,760.7	-1,669.9	-7,495.4	1,351,719.42	3,256,288.70	40.295225	-104.581191
16,872.0	90.66	269.57	6,759.5	-1,670.5	-7,589.4	1,351,717.81	3,256,194.73	40.295223	-104.581528
16,966.0	90.85	269.80	6,758.2	-1,671.0	-7,683.4	1,351,716.30	3,256,100.75	40.295222	-104.581865
17,060.0	90.95	269.49	6,756.7	-1,671.6	-7,777.4	1,351,714.71	3,256,006.78	40.295220	-104.582202
17,248.0	90.79	269.69	6,753.9	-1,672.9	-7,965.3	1,351,711.36	3,255,818.84	40.295216	-104.582876
17,342.0	90.63	269.67	6,752.7	-1,673.5	-8,059.3	1,351,709.83	3,255,724.87	40.295215	-104.583213
17,397.0	90.63	269.67	6,752.1	-1,673.8	-8,114.3	1,351,708.93	3,255,669.88	40.295214	-104.583410
BHL - 1662' FSL & 206' FWL									

Casing Points					
Measured Depth (ft)	Vertical Depth (ft)	Name	Casing Diameter (")	Hole Diameter (")	
50.0	50.0	13 3/8"	13-3/8	17-1/2	

Design Annotations					
Measured Depth (ft)	Vertical Depth (ft)	Local Coordinates		Comment	
		+N/-S (ft)	+E/-W (ft)		
7,862.0	6,705.0	-1,679.8	1,419.7	LPL - 1652' FSL & 798' FEL	
17,397.0	6,752.1	-1,673.8	-8,114.3	BHL - 1662' FSL & 206' FWL	

Checked By: _____ Approved By: _____ Date: _____

Chevron DJ Basin

SEC.21-T4N-R64W

George Pad

GEORGE 17N

George 17N

George 17N Final Surveys

Anticollision Summary Report

29 April, 2024

Ensign

Anticollision Summary Report

Company:	Chevron DJ Basin	Local Co-ordinate Reference:	Well GEORGE 17N
Project:	SEC.21-T4N-R64W	TVD Reference:	Well @ 4743.0ft (T41 - RKB 25')
Reference Site:	George Pad	MD Reference:	Well @ 4743.0ft (T41 - RKB 25')
Site Error:	0.0 ft	North Reference:	True
Reference Well:	GEORGE 17N	Survey Calculation Method:	Minimum Curvature
Well Error:	0.0 ft	Output errors are at	3.50 sigma
Reference Wellbore	George 17N	Database:	US_EDM
Reference Design:	George 17N Final Surveys	Offset TVD Reference:	Offset Datum

Reference	George 17N Final Surveys		
Filter type:	NO GLOBAL FILTER: Using user defined selection & filtering criteria		
Interpolation Method:	MD Interval 100.0ft	Error Model:	ISCWSA
Depth Range:	Unlimited	Scan Method:	Closest Approach 3D
Results Limited by:	Maximum ellipse separation of 1,000.0 ft	Error Surface:	Combined Pedal Curve
Warning Levels Evaluated at:	3.50 Sigma	Casing Method:	N/A Unknown

Survey Program	Date	04/29/2024		
From (ft)	To (ft)	Survey (Wellbore)	Tool Name	Description
208.0	17,397.0	Survey #1 (George 17N)	MWD+IFR1+SAG+MS	OWSG MWD + IFR1 + Sag + Multi-Station Corre

Site Name Offset Well - Wellbore - Design	Reference Measured Depth (ft)	Offset Measured Depth (ft)	Distance Between Centres (ft)	Distance Between Ellipses (ft)	Separation Factor	Warning
Balboa C20-24D Pad Sec.20-T4N-R64W						
Balboa C20-24D - Wellbore #1 - Wellbore #1	14,868.0	6,958.5	312.6	133.5	1.756	CC, ES, SF
Chenoweth C20-25D - Wellbore #1 - Wellbore #1	16,300.0	7,056.0	418.1	207.1	1.993	CC, ES, SF
Borys Pad						
BORYS C22-783 - BORYS C22-783 - BORYS C22-783	6,726.4	6,645.2	852.2	783.6	12.839	CC, ES
BORYS C22-783 - BORYS C22-783 - BORYS C22-783	6,800.0	6,698.2	857.4	787.5	12.675	SF
George Offsets South						
JOHNSON C32-725 - JOHNSON C32-725 - JOHNSON C32-725	13,534.5	6,697.0	1,510.6	1,359.6	10.157	CC, ES
JOHNSON C32-725 - JOHNSON C32-725 - JOHNSON C32-725	13,700.0	6,697.0	1,519.8	1,366.4	10.050	SF
JOHNSON C32-735 - JOHNSON C32-735 - JOHNSON C32-735	14,100.0	6,603.0	1,575.2	1,412.0	9.787	CC
JOHNSON C32-735 - JOHNSON C32-735 - JOHNSON C32-735	14,117.3	6,603.0	1,575.3	1,411.8	9.768	ES
JOHNSON C32-735 - JOHNSON C32-735 - JOHNSON C32-735	14,300.0	6,603.0	1,586.5	1,420.4	9.684	SF
JOHNSON C32-745 - JOHNSON C32-745 - JOHNSON C32-745	14,701.2	6,467.2	1,573.6	1,400.1	9.184	CC
JOHNSON C32-745 - JOHNSON C32-745 - JOHNSON C32-745	14,717.6	6,466.8	1,573.7	1,399.9	9.169	ES
JOHNSON C32-745 - JOHNSON C32-745 - JOHNSON C32-745	14,800.0	6,464.8	1,576.7	1,401.7	9.124	SF
JOHNSON C32-755 - JOHNSON C32-755 - JOHNSON C32-755	15,395.1	6,606.0	1,594.6	1,407.3	8.614	CC
JOHNSON C32-755 - JOHNSON C32-755 - JOHNSON C32-755	15,417.6	6,606.0	1,594.7	1,407.0	8.594	ES
JOHNSON C32-755 - JOHNSON C32-755 - JOHNSON C32-755	15,500.0	6,606.0	1,597.9	1,408.8	8.550	SF
JOHNSON C32-765 - JOHNSON C32-765 - JOHNSON C32-765	16,011.8	6,510.0	1,579.6	1,380.7	8.030	CC
JOHNSON C32-765 - JOHNSON C32-765 - JOHNSON C32-765	16,018.6	6,510.0	1,579.6	1,380.6	8.025	ES
JOHNSON C32-765 - JOHNSON C32-765 - JOHNSON C32-765	16,100.0	6,510.0	1,582.2	1,381.8	7.983	SF
JOHNSON C32-775 - JOHNSON C32-775 - JOHNSON C32-775	16,609.0	6,458.1	1,584.9	1,374.6	7.613	CC
JOHNSON C32-775 - JOHNSON C32-775 - JOHNSON C32-775	16,618.5	6,458.1	1,585.0	1,374.4	7.606	ES
JOHNSON C32-775 - JOHNSON C32-775 - JOHNSON C32-775	16,700.0	6,458.2	1,587.7	1,375.9	7.572	SF
JOHNSON C32-785 - JOHNSON C32-785 - JOHNSON C32-785	17,200.0	6,556.6	1,560.5	1,336.4	7.031	CC
JOHNSON C32-785 - JOHNSON C32-785 - JOHNSON C32-785	17,216.8	6,557.0	1,560.6	1,336.2	7.021	ES
JOHNSON C32-785 - JOHNSON C32-785 - JOHNSON C32-785	17,300.0	6,559.0	1,563.9	1,338.3	6.997	SF

CC - Min centre to center distance or convergent point, SF - min separation factor, ES - min ellipse separation

Ensign

Anticollision Summary Report

Company:	Chevron DJ Basin	Local Co-ordinate Reference:	Well GEORGE 17N
Project:	SEC.21-T4N-R64W	TVD Reference:	Well @ 4743.0ft (T41 - RKB 25')
Reference Site:	George Pad	MD Reference:	Well @ 4743.0ft (T41 - RKB 25')
Site Error:	0.0 ft	North Reference:	True
Reference Well:	GEORGE 17N	Survey Calculation Method:	Minimum Curvature
Well Error:	0.0 ft	Output errors are at	3.50 sigma
Reference Wellbore	George 17N	Database:	US_EDM
Reference Design:	George 17N Final Surveys	Offset TVD Reference:	Offset Datum

Summary						
Site Name	Reference Measured Depth (ft)	Offset Measured Depth (ft)	Distance Between Centres (ft)	Distance Between Ellipses (ft)	Separation Factor	Warning
Offset Well - Wellbore - Design						
George Pad						
GEORGE 02N - GEORGE 02N - GEORGE 02N Final Su	215.4	215.8	224.1	215.9	38.152	CC, ES
GEORGE 02N - GEORGE 02N - GEORGE 02N Final Su	1,100.0	1,105.5	342.5	329.4	32.110	SF
GEORGE 03NA - GEORGE 03NA - GEORGE 03NA Fina	235.8	238.0	208.1	199.9	35.212	CC, ES
GEORGE 03NA - GEORGE 03NA - GEORGE 03NA Fina	1,000.0	1,011.3	279.6	267.3	28.232	SF
GEORGE 04N - GEORGE 04N - GEORGE 04N Final Su	210.4	210.2	194.3	186.0	33.050	CC, ES
GEORGE 04N - GEORGE 04N - GEORGE 04N Final Su	1,100.0	1,123.5	285.8	272.8	26.930	SF
GEORGE 05N - GEORGE 05N - GEORGE 05N Final Su	213.8	213.8	179.1	170.9	30.416	CC, ES
GEORGE 05N - GEORGE 05N - GEORGE 05N Final Su	1,000.0	1,011.9	258.5	246.3	26.256	SF
GEORGE 06N - GEORGE 06N - GEORGE 06N Final Su	225.3	226.0	163.8	155.5	27.702	CC, ES
GEORGE 06N - GEORGE 06N - GEORGE 06N Final Su	900.0	907.1	219.7	208.2	24.091	SF
GEORGE 07NA - GEORGE 07NA - GEORGE 07NA Finz	202.0	201.1	149.7	141.4	25.405	CC, ES
GEORGE 07NA - GEORGE 07NA - GEORGE 07NA Finz	700.0	698.6	188.3	178.1	24.149	SF
GEORGE 08N - GEORGE 08N - GEORGE 08N Final Su	0.0	0.0	134.8			
GEORGE 08N - GEORGE 08N - GEORGE 08N Final Su	1,100.0	1,120.5	193.8	180.7	17.950	SF
GEORGE 09N - GEORGE 09N - GEORGE 09N Final Su	202.2	201.3	119.7	111.5	20.231	CC, ES
GEORGE 09N - GEORGE 09N - GEORGE 09N Final Su	17,397.0	17,953.0	1,738.9	1,405.3	5.244	SF
GEORGE 10N - GEORGE 10N - GEORGE 10N Final Su	600.0	609.6	94.1	84.6	12.956	CC, ES
GEORGE 10N - GEORGE 10N - GEORGE 10N Final Su	17,397.0	17,935.1	1,534.7	1,199.9	4.610	SF
GEORGE 11N - GEORGE 11N - GEORGE 11N Final Su	213.9	214.4	89.2	80.9	14.930	CC, ES
GEORGE 11N - GEORGE 11N - GEORGE 11N Final Su	17,397.0	17,992.0	1,317.9	983.6	3.965	SF
GEORGE 12N - GEORGE 12N - GEORGE 12N Final Su	214.1	214.5	74.1	65.9	12.339	CC, ES
GEORGE 12N - GEORGE 12N - GEORGE 12N Final Su	17,397.0	18,042.6	1,089.5	752.8	3.253	SF
GEORGE 13N - GEORGE 13N - GEORGE 13N Final Su	213.9	214.2	59.1	50.9	9.756	CC, ES
GEORGE 13N - GEORGE 13N - GEORGE 13N Final Su	17,397.0	17,319.0	880.6	557.6	2.739	SF
GEORGE 14N - GEORGE 14N - GEORGE 14N Final Su	219.6	220.0	43.8	35.5	7.104	CC, ES
GEORGE 14N - GEORGE 14N - GEORGE 14N Final Su	17,397.0	17,312.0	663.3	339.1	2.054	SF
GEORGE 15NA - GEORGE 15NA - GEORGE 15NA Finz	210.8	210.9	29.3	21.2	4.657	CC, ES
GEORGE 15NA - GEORGE 15NA - GEORGE 15NA Finz	17,397.0	17,373.4	431.8	113.0	1.357	Collision Monitoring, SF
GEORGE 16N - GEORGE 16N - GEORGE 16N Final Su	220.8	220.9	13.7	5.4	1.934	CC
GEORGE 16N - GEORGE 16N - GEORGE 16N Final Su	15,800.0	15,812.6	183.5	-80.6	0.692	Authorization, SF
GEORGE 16N - GEORGE 16N - GEORGE 16N Final Su	17,397.0	17,412.2	214.8	-87.8	0.707	Authorization, ES
GEORGE 17N - George 17N - GEORGE 17N Plan #3 4-	10,629.0	10,630.5	0.7	-61.1	-0.030	Unacceptable Path, SF
GEORGE 17N - George 17N - GEORGE 17N Plan #3 4-	10,700.0	10,701.5	0.4	-79.8	-0.026	Unacceptable Path, CC
GEORGE 17N - George 17N - GEORGE 17N Plan #3 4-	16,800.0	16,801.1	11.0	-275.2	0.030	Unacceptable Path, ES
GEORGE 18N - GEORGE 18N - GEORGE 18N	0.0	0.0	15.2			
GEORGE 18N - GEORGE 18N - GEORGE 18N Plan #3	0.0	0.0	15.2			
GEORGE 18N - GEORGE 18N - GEORGE 18N Plan #3	17,397.0	17,503.2	239.9	-66.9	0.780	Shut in, ES, SF
GEORGE 19NA - GEORGE 19NA - GEORGE 19NA	0.0	0.0	30.2			
GEORGE 19NA - GEORGE 19NA - GEORGE 19NA Plar	0.0	0.0	30.2			
GEORGE 19NA - GEORGE 19NA - GEORGE 19NA Plar	17,397.0	17,495.5	445.8	122.5	1.382	Collision Monitoring, SF
GEORGE 20N - GEORGE 20N - GEORGE 20N Plan #2	0.0	0.0	45.2			
GEORGE 20N - GEORGE 20N - GEORGE 20N Plan #2	100.0	100.0	45.2	37.2	7.455	ES
GEORGE 20N - GEORGE 20N - GEORGE 20N Plan #2	17,397.0	27,159.1	667.9	297.0	1.806	SF
GEORGE 21N - GEORGE 21N - George 21N Plan #2 4-	583.1	579.8	55.0	45.5	7.234	CC, ES
GEORGE 21N - GEORGE 21N - George 21N Plan #2 4-	800.0	794.5	60.7	49.8	6.771	SF
GEORGE 22N - GEORGE 22N - GEORGE 22N Plan #2	0.0	0.0	75.2			
GEORGE 22N - GEORGE 22N - GEORGE 22N Plan #2	100.0	100.0	75.2	67.0	12.620	ES
GEORGE 22N - GEORGE 22N - GEORGE 22N Plan #2	17,397.0	17,658.7	1,102.9	780.1	3.435	SF
GEORGE 23N - GEORGE 23N - GEORGE 23N Plan #2	0.0	0.0	90.0			
GEORGE 23N - GEORGE 23N - GEORGE 23N Plan #2	17,397.0	17,835.4	1,284.3	739.9	2.365	SF

CC - Min centre to center distance or convergent point, SF - min separation factor, ES - min ellipse separation

Ensign

Anticollision Summary Report

Company:	Chevron DJ Basin	Local Co-ordinate Reference:	Well GEORGE 17N
Project:	SEC.21-T4N-R64W	TVD Reference:	Well @ 4743.0ft (T41 - RKB 25')
Reference Site:	George Pad	MD Reference:	Well @ 4743.0ft (T41 - RKB 25')
Site Error:	0.0 ft	North Reference:	True
Reference Well:	GEORGE 17N	Survey Calculation Method:	Minimum Curvature
Well Error:	0.0 ft	Output errors are at	3.50 sigma
Reference Wellbore	George 17N	Database:	US_EDM
Reference Design:	George 17N Final Surveys	Offset TVD Reference:	Offset Datum

Site Name Offset Well - Wellbore - Design	Reference Measured Depth (ft)	Offset Measured Depth (ft)	Distance Between Centres (ft)	Distance Between Ellipses (ft)	Separation Factor	Warning
Hanscome C28-30D Pad SEC.20-T4N-R64W						
Hanscome C29-27D 03-24-09 - Hanscome C29-27D - H:	13,630.6	6,892.5	1,534.5	1,379.7	10.052	CC, ES
Hanscome C29-27D 03-24-09 - Hanscome C29-27D - H:	13,800.0	6,891.9	1,543.9	1,386.5	9.950	SF
Long C20-18 Pad Sec.20-T4N-R64W						
Long C20-21D - Wellbore #1 - Wellbore #1	14,833.3	6,982.0	1,072.9	894.6	6.088	CC, ES
Long C20-21D - Wellbore #1 - Wellbore #1	14,900.0	6,982.0	1,074.9	895.4	6.055	SF
Long C20-22D - Wellbore #1 - Wellbore #1	13,641.8	7,040.7	1,132.5	974.1	7.247	CC, ES
Long C20-22D - Wellbore #1 - Wellbore #1	13,800.0	7,038.9	1,143.3	981.5	7.159	SF
SEC.15-T4N-R64W (Existing)						
STOCKLEY C22-79HN - STOCKLEY C22-79HN - STOC	7,156.2	10,046.4	360.3	251.3	3.360	CC
STOCKLEY C22-79HN - STOCKLEY C22-79HN - STOC	7,200.0	10,054.9	364.7	247.8	3.166	ES, SF
SEC.19-T4N-R64W (Exist)						
OSTER PM C19-8 (Vert) - OSTER PM C19-8 - OSTER F	17,397.0	6,808.1	1,765.8	1,242.5	3.386	CC, ES, SF
VICTOR C19-9 - VICTOR C19-9 - VICTOR C19-9	17,397.0	6,802.2	965.4	849.2	8.465	CC, ES, SF
VICTOR C19-16 (Vert) - VICTOR C19-16 - VICTOR C19-	17,397.0	6,830.1	1,308.6	796.9	2.565	CC, ES, SF
SEC.20-T4N-R64W (Exist)						
API 20-614 (Vert) - API 20-614 - API 20-614	15,611.4	6,788.0	1,599.0	1,405.2	8.341	CC, ES
API 20-614 (Vert) - API 20-614 - API 20-614	15,800.0	6,792.1	1,610.3	1,413.5	8.271	SF
BALBOA 20-1 (Vert) - BALBOA 20-1 - BALBOA 20-1	12,952.7	6,772.7	947.0	452.3	1.919	CC, ES, SF
BALBOA 20-3 - BALBOA 20-3 - BALBOA 20-3	14,095.7	6,763.9	296.0	133.4	1.833	CC, ES, SF
BALBOA C-20-2 (Vert) - BALBOA C-20-2 - BALBOA C-2	12,823.9	6,749.9	203.9	66.2	1.490	Collision Monitoring, CC,
BALBOA C20-23 (Vert) - BALBOA C20-23 - BALBOA C2	13,609.8	6,764.7	225.1	71.9	1.477	Collision Monitoring, CC,
BALBOA C20-24D - BALBOA C20-24D - BALBOA 20C-2	14,876.4	6,958.5	308.9	129.7	1.733	CC, ES, SF
BALBOA C20-4 (Vert) - BALBOA C20-4 - BALBOA C20-4	14,425.3	6,770.8	1,027.2	857.6	6.131	CC, ES
BALBOA C20-4 (Vert) - BALBOA C20-4 - BALBOA C20-4	14,500.0	6,771.1	1,029.7	859.3	6.114	SF
BALBOA C20-9X - BALBOA C20-9X - BALBOA C20-9X	12,844.5	6,765.4	477.4	339.7	3.513	CC, ES, SF
CHENOWETH 2 - CHENOWETH 2 - CHENOWETH 2	16,972.6	6,806.2	994.7	773.1	4.527	CC, ES
CHENOWETH 2 - CHENOWETH 2 - CHENOWETH 2	17,000.0	6,806.0	995.2	773.1	4.521	SF
CHENOWETH C20-25D - CHENOWETH C20-25D - CHI	16,303.6	7,055.9	414.4	203.3	1.974	CC, ES, SF
HANSCOME C29-27D - HANSCOME C29-27D - HANSC	13,633.4	6,891.5	1,529.1	1,374.1	10.013	CC
HANSCOME C29-27D - HANSCOME C29-27D - HANSC	13,700.0	6,891.1	1,530.2	1,374.1	9.943	ES
HANSCOME C29-27D - HANSCOME C29-27D - HANSC	13,800.0	6,890.9	1,538.2	1,380.8	9.911	SF
HIGHLAND 11-20 - HIGHLAND 11-20 - HIGHLAND 11-2	15,732.0	6,770.5	445.4	249.7	2.292	CC, ES, SF
HIGHLAND 12-20 - HIGHLAND 12-20 - HIGHLAND 12-2	16,960.4	6,785.5	290.4	68.5	1.312	Collision Monitoring, CC,
JOHNSON C29-28 (Vert) - JOHNSON C29-28 - JOHNS	15,157.8	6,793.7	1,517.8	1,007.6	2.985	CC, ES
JOHNSON C29-28 (Vert) - JOHNSON C29-28 - JOHNS	15,200.0	6,794.0	1,518.2	1,007.8	2.984	SF
KLINGENBERG C20-780 - KLINGENBERG C20-780 (Pi	17,105.5	6,815.0	1,402.1	1,177.4	6.298	CC, ES
KLINGENBERG C20-780 - KLINGENBERG C20-780 (Pi	17,200.0	6,813.1	1,405.3	1,179.4	6.276	SF
KLINGENBERG C20-780 - KLINGENBERG C20-780 (S	17,000.0	8,362.9	453.4	354.5	4.678	SF
KLINGENBERG C20-780 - KLINGENBERG C20-780 (S	17,100.0	8,361.8	444.3	348.3	4.724	CC, ES
KLINGENBERG C20-780 - KLINGENBERG C20-780 (S	17,000.0	8,362.9	453.3	354.5	4.678	SF
KLINGENBERG C20-780 - KLINGENBERG C20-780 (S	17,100.0	8,361.8	444.3	348.3	4.724	CC, ES
LONG C20-21D - LONG C20-21D - LONG C20-21D	14,836.0	6,982.0	1,076.5	898.2	6.106	CC, ES
LONG C20-21D - LONG C20-21D - LONG C20-21D	14,900.0	6,982.0	1,078.4	898.8	6.073	SF
LONG C20-22D - LONG C20-22D - LONG C20-22D	13,644.4	7,040.7	1,132.4	974.0	7.245	CC, ES
LONG C20-22D - LONG C20-22D - LONG C20-22D	13,800.0	7,038.9	1,142.9	981.1	7.156	SF
PREBISH 2 - PREBISH 2 - PREBISH 2	16,837.4	6,800.0	1,682.8	1,463.8	7.759	CC
PREBISH 2 - PREBISH 2 - PREBISH 2	16,900.0	6,800.0	1,684.0	1,463.8	7.720	ES
PREBISH 2 - PREBISH 2 - PREBISH 2	17,000.0	6,800.0	1,690.6	1,468.9	7.699	SF

CC - Min centre to center distance or convergent point, SF - min separation factor, ES - min ellipse separation

Ensign

Anticollision Summary Report

Company:	Chevron DJ Basin	Local Co-ordinate Reference:	Well GEORGE 17N
Project:	SEC.21-T4N-R64W	TVD Reference:	Well @ 4743.0ft (T41 - RKB 25')
Reference Site:	George Pad	MD Reference:	Well @ 4743.0ft (T41 - RKB 25')
Site Error:	0.0 ft	North Reference:	True
Reference Well:	GEORGE 17N	Survey Calculation Method:	Minimum Curvature
Well Error:	0.0 ft	Output errors are at	3.50 sigma
Reference Wellbore	George 17N	Database:	US_EDM
Reference Design:	George 17N Final Surveys	Offset TVD Reference:	Offset Datum

Summary						
Site Name Offset Well - Wellbore - Design	Reference Measured Depth (ft)	Offset Measured Depth (ft)	Distance Between Centres (ft)	Distance Between Ellipses (ft)	Separation Factor	Warning
SEC.21-T4N-R64W (Exist)						
HAMLIN C21-22 (Vert) - HAMLIN C21-22 - HAMLIN C21	3,662.0	3,316.7	164.1	-72.0	0.692	Authorization, CC
HAMLIN C21-22 (Vert) - HAMLIN C21-22 - HAMLIN C21	3,700.0	3,350.5	165.1	-73.4	0.689	Authorization, ES, SF
HANSCOME C21-20 (Vert) - HANSCOME C21-20 - HAN	11,002.1	6,743.8	941.2	457.6	1.951	CC, ES, SF
HANSCOME C21-21 (Vert) - HANSCOME C21-21 - HAN	0.0	0.0	811.8			
HANSCOME C21-21 (Vert) - HANSCOME C21-21 - HAN	9,668.3	6,730.3	968.2		2.028	ES, SF
HANSCOME C21-24 (Vert) - HANSCOME C21-24 - HAN	9,610.5	6,730.5	325.7	-152.8	0.679	Authorization, CC, ES, SF
HANSCOME C21-79HN - HANSCOME C21-79HN - HAN	12,400.0	7,780.7	27.0	-35.4	0.409	Unacceptable Path, CC, ES, SF
JULIE C21-25 (Vert) - JULIE C21-25 - JULIE C21-25	10,911.0	6,769.5	527.0	41.7	1.086	Collision Monitoring, CC, ES, SF
KLEIN 1 (Vert) - KLEIN 1 - KLEIN 1	11,654.2	6,772.6	1,000.7	512.4	2.055	CC, ES, SF
KLEIN 21-12 (Vert) - KLEIN 21-12 - KLEIN 21-12	11,668.2	6,748.8	343.6	-143.2	0.704	Authorization, CC, ES, SF
LEONARD 1 - LEONARD 1 - LEONARD 1	9,076.2	6,677.0	1,025.9		956.3	15.249 CC, ES
LEONARD 1 - LEONARD 1 - LEONARD 1	9,100.0	6,677.6	1,026.2		956.5	15.241 SF
LEONARD 21-10 (Vert) - LEONARD 21-10 - LEONARD 21-10	9,019.4	6,706.9	332.0	-143.8	0.696	Authorization, CC, ES, SF
LEONARD 21-1414 (Vert) - LEONARD 21-1414 - LEONARD 21-1414	10,369.0	6,757.8	1,006.9		524.2	2.091 CC, ES, SF
LEONARD 21-1614 - LEONARD 21-1614 - LEONARD 21-1614	8,100.0	6,683.3	633.3		571.8	10.671 SF
LEONARD 21-1614 - LEONARD 21-1614 - LEONARD 21-1614	8,200.0	6,686.0	623.6		563.1	10.691 ES
LEONARD 21-1614 - LEONARD 21-1614 - LEONARD 21-1614	8,212.2	6,686.3	623.5		563.1	10.717 CC
LEONARD 3 (Vert) - LEONARD 3 - LEONARD 3	10,366.4	6,762.8	327.6	-155.2	0.677	Authorization, CC, ES, SF
THOUTT 2 - THOUTT 2 - THOUTT 2	7,700.0	6,827.4	125.1	63.7	2.079	CC, ES, SF

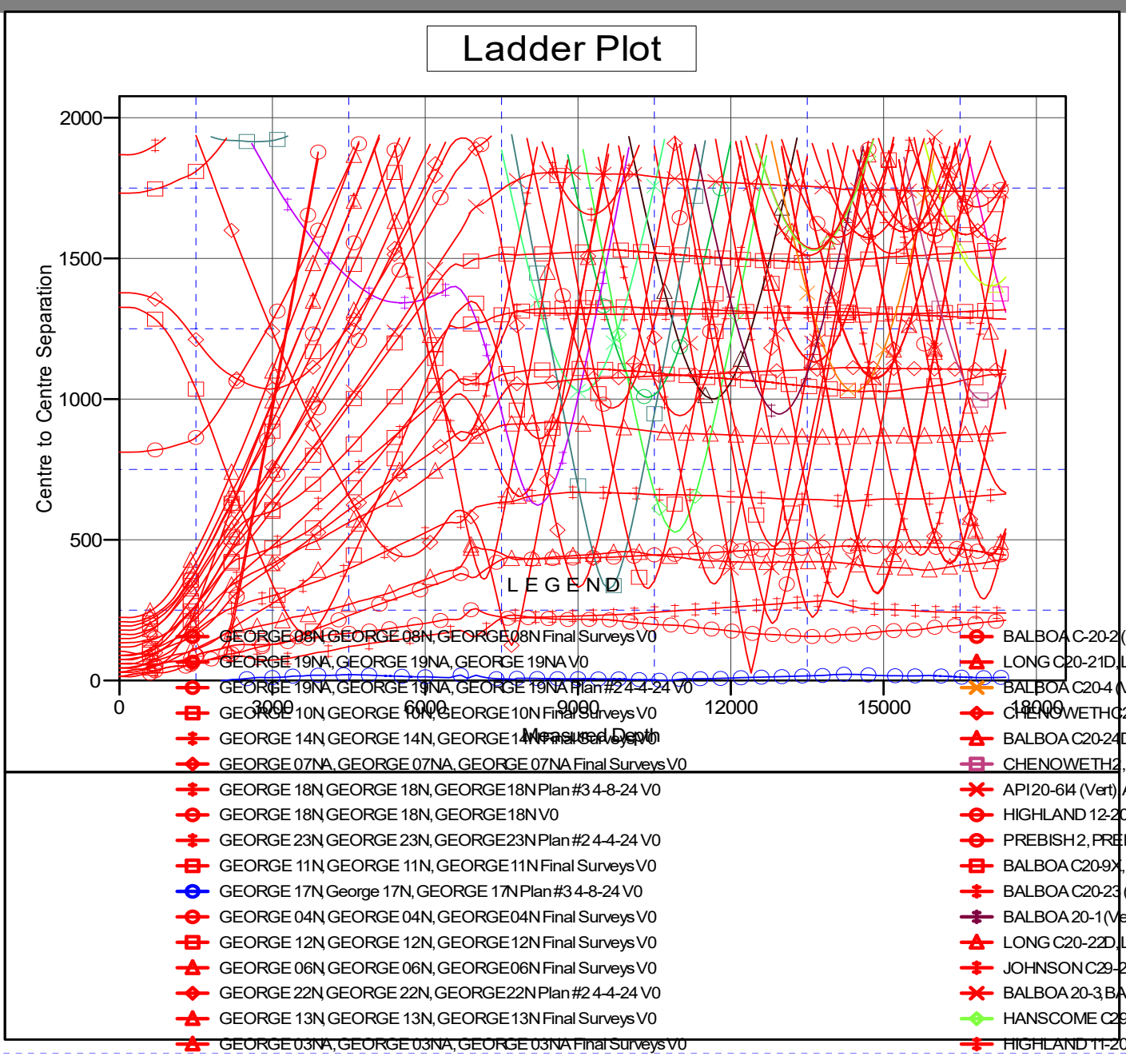
CC - Min centre to center distance or convergent point, SF - min separation factor, ES - min ellipse separation

Ensign

Anticollision Summary Report

Company:	Chevron DJ Basin	Local Co-ordinate Reference:	Well GEORGE 17N
Project:	SEC.21-T4N-R64W	TVD Reference:	Well @ 4743.0ft (T41 - RKB 25')
Reference Site:	George Pad	MD Reference:	Well @ 4743.0ft (T41 - RKB 25')
Site Error:	0.0 ft	North Reference:	True
Reference Well:	GEORGE 17N	Survey Calculation Method:	Minimum Curvature
Well Error:	0.0 ft	Output errors are at	3.50 sigma
Reference Wellbore	George 17N	Database:	US_EDM
Reference Design:	George 17N Final Surveys	Offset TVD Reference:	Offset Datum

Reference Depths are relative to Well @ 4743.0ft (T41 - RKB 25') Coordinates are relative to: GEORGE 17N
 Offset Depths are relative to Offset Datum Coordinate System is US State Plane 1983, Colorado Northern Zone
 Central Meridian is -105.500000 Grid Convergence at Surface is: 0.61°



Ensign

Anticollision Summary Report

Company:	Chevron DJ Basin	Local Co-ordinate Reference:	Well GEORGE 17N
Project:	SEC.21-T4N-R64W	TVD Reference:	Well @ 4743.0ft (T41 - RKB 25')
Reference Site:	George Pad	MD Reference:	Well @ 4743.0ft (T41 - RKB 25')
Site Error:	0.0 ft	North Reference:	True
Reference Well:	GEORGE 17N	Survey Calculation Method:	Minimum Curvature
Well Error:	0.0 ft	Output errors are at	3.50 sigma
Reference Wellbore	George 17N	Database:	US_EDM
Reference Design:	George 17N Final Surveys	Offset TVD Reference:	Offset Datum

Reference Depths are relative to Well @ 4743.0ft (T41 - RKB 25') Coordinates are relative to: GEORGE 17N
 Offset Depths are relative to Offset Datum Coordinate System is US State Plane 1983, Colorado Northern Zone
 Central Meridian is -105.500000 Grid Convergence at Surface is: 0.61°

