

Cement Post Job Report

Client: PDC Energy

Well Name: George 10N

API #: 05-123-51767

Job Date: April 3, 2024

Job Type: New Well - 5.5" Production String

Cement Company & Contact: EXERO Well Integrity -
Cheve Meyer 720-239-3819

EXERO

TREATMENT REPORT

CLIENT	WELL	RIG	JOB TYPE	THREAD TYPE	WELLHEAD CONNECTION
PDC Energy	George 10N	True 41	Production	Buttress	5 1/2" HP Cement Head

WELL MD (FT)	WELL TVD (FT)	DEVIATION (DEG)	NUMBER OF STAGES	BHST (DEG)	BHCT (DEG)
17,950	6755	90	1	230	230

PACKER/RETAINER/CIBP/DV TOOL DEPTHS (FT)	TOOL TYPE	TOP OF PERFS (FT)	BOTTOM OF PERFS (FT)	NUMBER OF HOLES

CASING/TUBING/DP DETAILS								
STRING TYPE	GRADE	OD"	WT/FT	ID"	OH SIZE"	% EXCESS LEAD	% EXCESS TAIL	TOTAL DEPTH (FT)
Surface	J55	9.625	36	8.921	12.25			1987
Production	P110	5.5	20	4.778	8.5	0	0	17,936
MAXIMUM CASING/TUBING/DP PSI						MAXIMUM ANNULAR PSI		

Mud Type	OBM	Rotate Y,N	Yes	Circulation Data				Water Requirements (bbls)		
Mud ppg	10.3	Rate (rpm)	30	Circulate Time (hrs)		2	Spacers		160	
Flow Temp		Torque Val.	12	Circulation Rate (bpm)		10	PSI	1200	Stage 1 Lead	148
Vis. Sec/qt	55	Time (hr)	2	Full Circulation ? (Y,N,P)		Yes		Stage 1 Tail	244	
PV (cP)		Pipe Reciprocation		Gas Present (Y,N)		Units		Stage 2 Lead		
Yield Pt	14	Recip Y,N	No	Centralizers/Plugs				Stage 2 Tail		
10 sec gel		Stroke (ft)		Quantity & Type		Customer Provided		Displacement	398	
10 min gel		Recip time		Top Plug/Type		Customer Provided		Wash up	20	
30 min gel		Stuck ?		Bottom Plug/Type		Customer Provided		Total + 10% Safety	1067	

Preflush & Spacers		Stage 1 Lead - Class G		Stage 1 Tail - Class G		Stage 2 Lead		Stage 2 Tail		Displacement	
Spacer 1	Spacer	Density	12.9	Density	13.7	Density		Density		Fluid Type	Water
Density	12	Sacks	1643	Sacks	1521	Sacks		Sacks		Dens. ppg	8.33
Volume	160	Vol/bbls	319.0	Vol/bbls	371.1	Vol/bbls	0.0	Vol/bbls	0.0	Vol. bbl	398
Rate	10	Rate	10	Rate	10	Rate		Rate		Rate bpm	10
Spacer 2		Yield	1.09	Yield	1.37	Yield		Yield		Clay Stay?	No
Density		Gal/Sk	3.77	Gal/Sk	6.63	Gal/Sk		Gal/Sk		Biocide ?	Yes
Volume		% Excess	0	% Excess	0	% Excess		% Excess		Slow @ bbl	275
Rate		TOL (ft)	1006	TOT (ft)	8647	TOL (ft)		TOT (ft)		Bump PSI	3500

Final Displacement (bbls)	398
Bump Plug?	Yes
Final Bump Pressure (psi)	3500
Full Returns throughout job?	Full
Vol. away/Time when returns lost	-
Vol. away when returns were regained	-
Spacer to Surface?	Yes
Spacer volume returned (bbls)	112
Cement to surface?	No
Cement volume to surface stage 1	-
Cement volume to surface stage 2	-

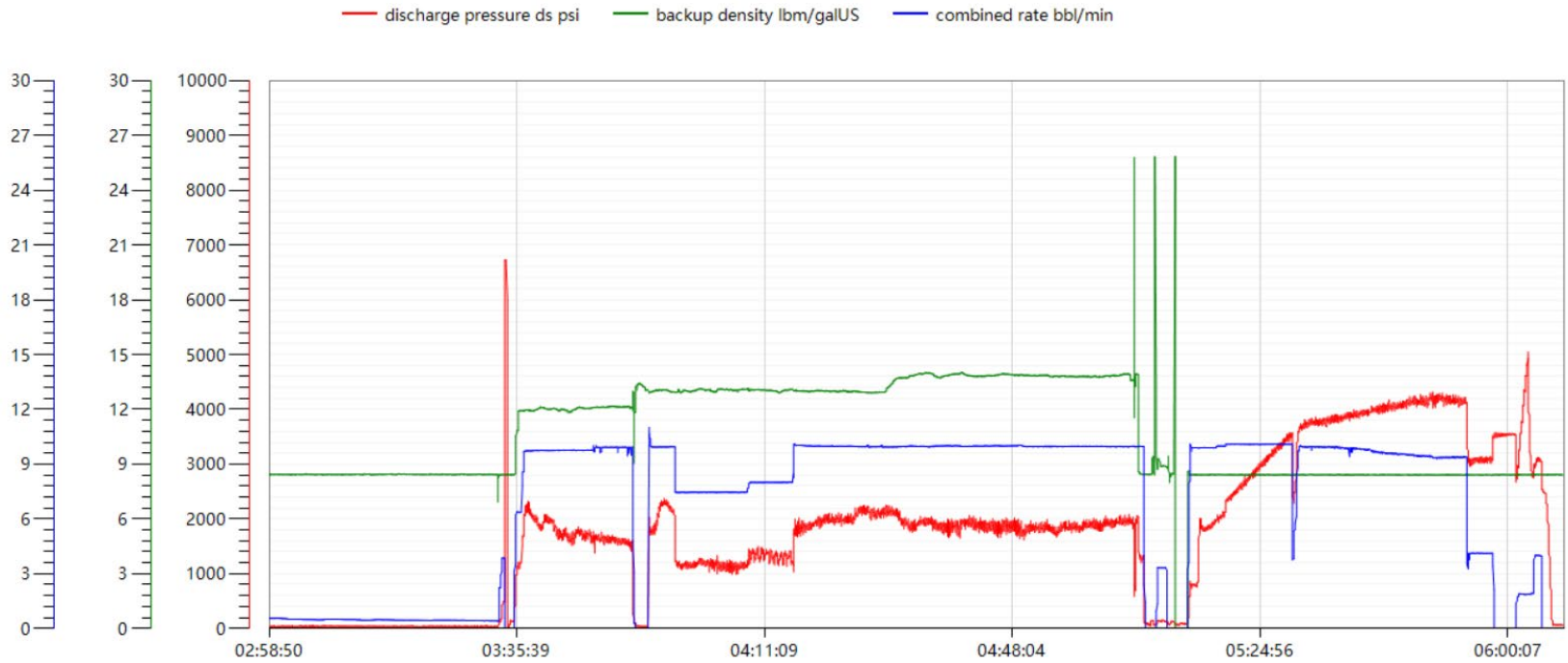
Surface Top Out Details-Pumped		Job Summary & Chems Used	
Cement Type		MFC 47 (gal)	112
Dens. ppg		MFC 67 (gal)	160
Sacks qty		Defoamer (gal)	35
Gal/sk		Biocide (gal)	20
Yield		Corr. Inhib (gal)	
Lbs. of chloride used		Fiber (lbs)	145
Top out pipe used ?		Chloride (lbs)	
Feet of top out pipe		Retarder (lbs)	
Annulus holding?		Clay Stay (gal)	
Sodium Silicate Used		Other	

JOB LOG

CLIENT	WELL	RIG	JOB TYPE	START DATE	Ambient Conditions		
PDC Energy	George 10N	True 41	Production	4/3/2024	Temp / Hum / Air Press 70 Deg F / 16% / 24.94 in		
DATE (dd/mm)	TIME (hh:mm)	DENSITY (ppg)	RATE (bpm)	VOL. (bbl)	TOTAL VOL.	PRESSURE	TREATMENT COMMENTS
4/2/2024	4:00:00 PM						Called out, requested by 01:00 on 04/03/2024.
4/3/2024	9:30:00 PM						Arrived on location.
4/3/2024	1:00:00 AM						Spotted equipment.
4/3/2024	3:10:00 AM						Safety meeting.
4/3/2024	3:31:00 AM	8.33	4.0	3	3	450	Filled lines.
4/3/2024	3:33:00 AM					6500	Pressure tested, no leaks.
4/3/2024	3:34:00 AM						Dropped bottom plug.
4/3/2024	3:35:00 AM	12	10.0	160	160	1800	Mixed and pumped spacer @ 112.0ppg, with fiber and surfactant.
4/3/2024	3:51:00 AM						Shutdown, dropped bottom plug 2.
4/3/2024	3:55:00 AM	12.9	10.0	319	319	2000	Mixed an pumped lead cmt @ 12.9ppg. (1643sks, 1.09yld, 3.77gl/sk.) TOLC 1006'.
4/3/2024	4:30:00 AM	13.7	10.0	371	371	1750	Mixed and pumped tail cmt @ 13.7ppg. (1521sks, 1.37yld, 6.63gl/sk) TOTC 8647'.
4/3/2024	5:07:00 AM	8.33	10.0	8	8	1500	Mixed and pumped sugar water.
4/3/2024	5:08:00 AM						Shutdown, washed pumps and lines.
4/3/2024	5:09:00 AM						Dropped top plug, verified by company man.
4/3/2024	5:13:00 AM	8.33	10.0	10	398	700	Fresh water displacement with biocide.
4/3/2024	5:19:00 AM	8.33	10.0	50	398	2000	Fresh water displacement with biocide.
4/3/2024	5:24:00 AM	8.33	10.0	100	398	2800	Fresh water displacement with biocide.
4/3/2024	5:30:00 AM	8.33	10.0	150	398	3500	Fresh water displacement with biocide.
4/3/2024	5:35:00 AM	8.33	10.0	200	398	3700	Fresh water displacement with biocide.
4/3/2024	5:40:00 AM	8.33	10.0	250	398	3800	Fresh water displacement with biocide.
4/3/2024	5:46:00 AM	8.33	9.5	300	398	3900	Fresh water displacement with biocide.
4/3/2024	5:51:00 AM	8.33	9.3	350	398	4000	Fresh water displacement with biocide.
4/3/2024	5:57:00 AM			398	398	3500	Landed plug @ calculated displacement. Received 112bbl of cmt back. FCP 3000psi.
4/3/2024	6:03:00 AM					4900	Pressured up and burst top plug.
4/3/2024	6:04:00 AM	8.33	4.0	5	5	3000	Pumped 5bbl wet shoe.
4/3/2024	6:06:00 PM						Shutdown.
4/3/2024	6:07:00 AM						Checked floats, 3.5bbl back. Floats held.
4/3/2024	6:10:00 AM						Rig begins Inflow test.
4/3/2024	6:15:00 AM						Flushed stack, verified clean by rig crew.
4/3/2024	6:30:00 AM						Rig down.
4/3/2024	7:15:00 AM						Depart location.

George 10N Production Pump Chart – Pressure / Rate / Density

Chart Report



ate:4/3/2024 Well Name:GEORGE 10N Location: Country: Operators:CHEVRON Supervisor:LUKE CASCIATO Jobtype:PRODUCTION Address: Comment: