

Chevron DJ Basin

GEORGE 09N

George Pad

North American Datum 1983 , US State Plane 1983, Colorado Northern Zone

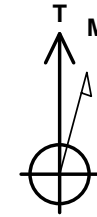
Ground Elevation: 4717.0

+N/-S	+E/-W	Northing	Easting	Latitude	Longitude
0.0	0.0	1353557.82	3263685.05	40.300058	-104.554607

T41 - RKB 25' Well @ 4742.0ft (T41 - RKB 25')



George Pad
GEORGE 09N
GEORGE 09N Final Surveys
10:32, April 12 2024



Azimuths to True North
Magnetic North: 7.66°

Magnetic Field
Strength: 51620.6nT
Dip Angle: 66.54°
Date: 02/15/2024
Model: HRGM

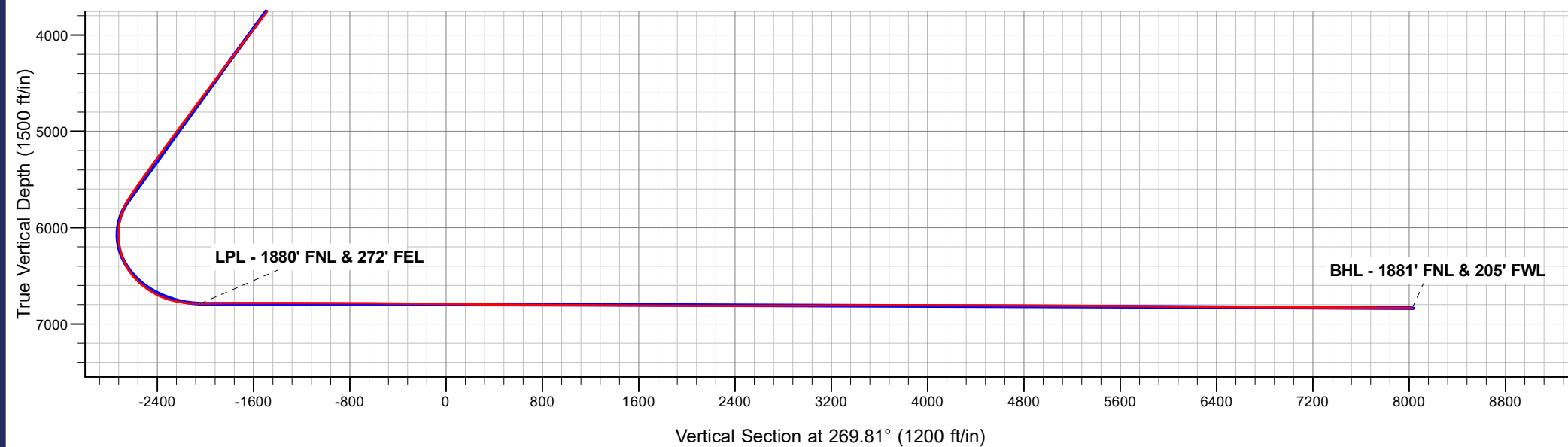
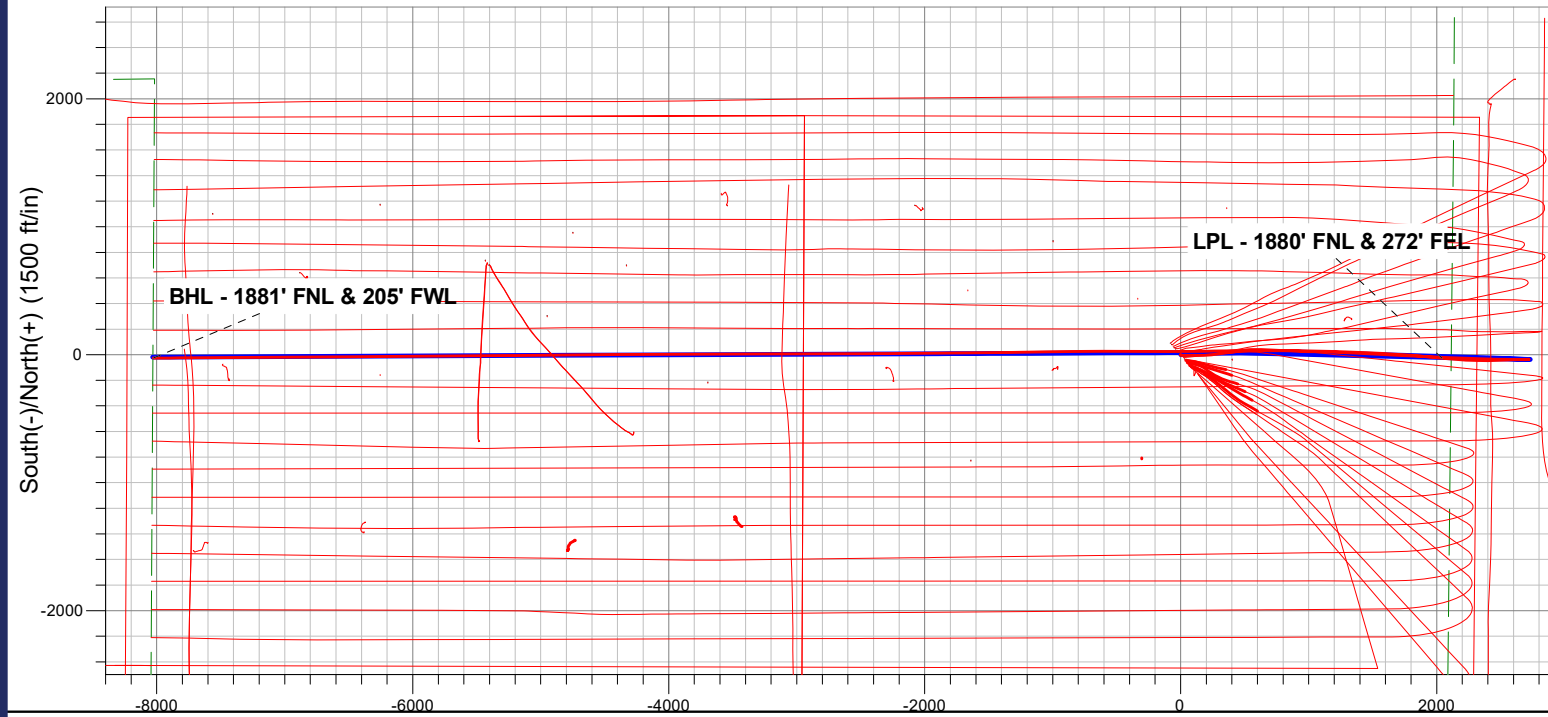
ANNOTATIONS

MD	TVD	Annotation
7881.0	6788.5	LPL - 1880' FNL & 272' FEL
17953.0	6833.3	BHL - 1881' FNL & 205' FWL

FINAL SURVEY

Projected Bottom Hole Location

**17953.0' MD / 6833.3' TVD
89.55° INC / 269.57° AZM
1881' FNL / 205' FWL**



Chevron DJ Basin

SEC.21-T4N-R64W

George Pad

GEORGE 09N

GEORGE 09N

Design: GEORGE 09N Final Surveys

Survey Report - Geographic

12 April, 2024

Ensign

Survey Report - Geographic

Company: Chevron DJ Basin	Local Co-ordinate Reference: Well GEORGE 09N
Project: SEC.21-T4N-R64W	TVD Reference: Well @ 4742.0ft (T41 - RKB 25')
Site: George Pad	MD Reference: Well @ 4742.0ft (T41 - RKB 25')
Well: GEORGE 09N	North Reference: True
Wellbore: GEORGE 09N	Survey Calculation Method: Minimum Curvature
Design: GEORGE 09N Final Surveys	Database: US_EDM

Project SEC.21-T4N-R64W, Weld County, CO	
Map System: US State Plane 1983	System Datum: Mean Sea Level
Geo Datum: North American Datum 1983	
Map Zone: Colorado Northern Zone	Using geodetic scale factor

Site George Pad	
Site Position:	Northing: 1,353,524.28 usft
From: Lat/Long	Easting: 3,263,715.11 usft
Position Uncertainty: 0.0 ft	Slot Radius: 13-3/16 "
	Latitude: 40.299965
	Longitude: -104.554500
	Grid Convergence: 0.61 °

Well GEORGE 09N	
Well Position +N/-S 0.0 ft	Northing: 1,353,557.82 usft
+E/-W 0.0 ft	Easting: 3,263,685.05 usft
Position Uncertainty 0.0 ft	Wellhead Elevation: ft
	Latitude: 40.300058
	Longitude: -104.554607
	Ground Level: 4,717.0 ft

Wellbore GEORGE 09N					
Magnetics	Model Name	Sample Date	Declination (°)	Dip Angle (°)	Field Strength (nT)
	HRGM	02/15/2024	7.66	66.54	51,620.61728837

Design GEORGE 09N Final Surveys				
Audit Notes:				
Version: 1.0	Phase: ACTUAL			
	Tie On Depth: 0.0			
Vertical Section:	Depth From (TVD) (ft)	+N/-S (ft)	+E/-W (ft)	Direction (°)
	0.0	0.0	0.0	269.81

Survey Program		Date 04/12/2024
From (ft)	To (ft)	Survey (Wellbore)
208.0	17,953.0	Survey #1 (GEORGE 09N)
		Tool Name MWD+IFR1+SAG+MS
		Description OWSG MWD + IFR1 + Sag + Multi-Station Corre

Survey									
Measured Depth (ft)	Inclination (°)	Azimuth (°)	Vertical Depth (ft)	+N/-S (ft)	+E/-W (ft)	Map Northing (usft)	Map Easting (usft)	Latitude	Longitude
0.0	0.00	0.00	0.0	0.0	0.0	1,353,557.82	3,263,685.05	40.300058	-104.554607
208.0	0.53	225.45	208.0	-0.7	-0.7	1,353,557.14	3,263,684.37	40.300056	-104.554609
300.0	0.35	228.09	300.0	-1.2	-1.2	1,353,556.65	3,263,683.86	40.300055	-104.554611
394.0	0.53	210.86	394.0	-1.7	-1.6	1,353,556.08	3,263,683.43	40.300053	-104.554613
488.0	1.49	114.01	488.0	-2.6	-0.7	1,353,555.22	3,263,684.34	40.300051	-104.554609
582.0	2.99	104.69	581.9	-3.7	2.7	1,353,554.14	3,263,687.84	40.300048	-104.554597
677.0	5.10	94.14	676.7	-4.6	9.4	1,353,553.28	3,263,694.45	40.300045	-104.554573
771.0	7.30	89.57	770.1	-4.9	19.5	1,353,553.13	3,263,704.60	40.300045	-104.554537
865.0	9.58	88.70	863.1	-4.7	33.3	1,353,553.50	3,263,718.39	40.300045	-104.554487
958.0	11.78	89.22	954.5	-4.4	50.5	1,353,553.98	3,263,735.61	40.300046	-104.554426
1,052.0	13.54	89.22	1,046.2	-4.1	71.1	1,353,554.48	3,263,756.21	40.300047	-104.554352
1,146.0	15.83	90.98	1,137.1	-4.2	94.9	1,353,554.67	3,263,780.03	40.300047	-104.554266

Ensign

Survey Report - Geographic

Company:	Chevron DJ Basin	Local Co-ordinate Reference:	Well GEORGE 09N
Project:	SEC.21-T4N-R64W	TVD Reference:	Well @ 4742.0ft (T41 - RKB 25')
Site:	George Pad	MD Reference:	Well @ 4742.0ft (T41 - RKB 25')
Well:	GEORGE 09N	North Reference:	True
Wellbore:	GEORGE 09N	Survey Calculation Method:	Minimum Curvature
Design:	GEORGE 09N Final Surveys	Database:	US_EDM

Survey										
Measured Depth (ft)	Inclination (°)	Azimuth (°)	Vertical Depth (ft)	+N/-S (ft)	+E/-W (ft)	Map Northing (usft)	Map Easting (usft)	Latitude	Longitude	
1,239.0	16.71	90.98	1,226.4	-4.6	121.0	1,353,554.50	3,263,806.08	40.300045	-104.554173	
1,334.0	17.59	91.33	1,317.2	-5.2	149.0	1,353,554.23	3,263,834.09	40.300044	-104.554073	
1,428.0	17.85	87.82	1,406.7	-5.0	177.6	1,353,554.76	3,263,862.68	40.300044	-104.553970	
1,522.0	18.91	87.64	1,495.9	-3.8	207.2	1,353,556.25	3,263,892.28	40.300048	-104.553864	
1,616.0	21.63	83.07	1,584.1	-1.1	239.6	1,353,559.31	3,263,924.68	40.300055	-104.553748	
1,710.0	23.74	82.37	1,670.8	3.5	275.6	1,353,564.30	3,263,960.58	40.300068	-104.553619	
1,804.0	27.00	82.72	1,755.7	8.8	315.5	1,353,569.94	3,264,000.45	40.300082	-104.553476	
1,897.0	29.90	82.72	1,837.5	14.4	359.5	1,353,576.02	3,264,044.33	40.300097	-104.553318	
2,054.0	28.92	81.15	1,974.2	25.2	435.8	1,353,587.63	3,264,120.54	40.300127	-104.553044	
2,147.0	28.46	79.80	2,055.8	32.5	479.8	1,353,595.49	3,264,164.48	40.300147	-104.552887	
2,240.0	29.53	85.65	2,137.2	38.2	524.5	1,353,601.62	3,264,209.09	40.300163	-104.552726	
2,334.0	30.77	88.22	2,218.5	40.7	571.6	1,353,604.63	3,264,256.19	40.300170	-104.552557	
2,427.0	31.16	91.40	2,298.2	40.9	619.5	1,353,605.29	3,264,304.02	40.300170	-104.552386	
2,522.0	31.18	93.32	2,379.5	38.8	668.6	1,353,603.79	3,264,353.16	40.300165	-104.552210	
2,616.0	31.26	93.35	2,459.9	36.0	717.2	1,353,601.48	3,264,401.83	40.300157	-104.552035	
2,710.0	31.76	91.33	2,540.0	34.0	766.3	1,353,600.00	3,264,450.92	40.300151	-104.551859	
2,803.0	30.59	91.82	2,619.6	32.7	814.4	1,353,599.19	3,264,499.06	40.300148	-104.551687	
2,898.0	30.34	92.92	2,701.5	30.7	862.6	1,353,597.72	3,264,547.19	40.300142	-104.551514	
2,991.0	30.17	92.56	2,781.8	28.5	909.4	1,353,595.98	3,264,594.02	40.300136	-104.551347	
3,085.0	29.63	93.55	2,863.3	26.0	956.2	1,353,593.98	3,264,640.83	40.300129	-104.551179	
3,179.0	31.57	91.73	2,944.2	23.8	1,003.9	1,353,592.31	3,264,688.64	40.300123	-104.551008	
3,274.0	30.64	89.88	3,025.6	23.1	1,053.0	1,353,592.13	3,264,737.71	40.300121	-104.550832	
3,368.0	31.15	91.38	3,106.2	22.5	1,101.3	1,353,592.11	3,264,785.97	40.300120	-104.550659	
3,462.0	30.84	90.40	3,186.8	21.8	1,149.7	1,353,591.87	3,264,834.37	40.300118	-104.550485	
3,556.0	31.23	93.87	3,267.4	20.0	1,198.1	1,353,590.58	3,264,882.80	40.300113	-104.550312	
3,650.0	30.06	91.58	3,348.2	17.7	1,245.9	1,353,588.79	3,264,930.67	40.300106	-104.550140	
3,744.0	31.20	93.38	3,429.1	15.6	1,293.8	1,353,587.22	3,264,978.53	40.300101	-104.549968	
3,838.0	31.25	92.39	3,509.5	13.2	1,342.4	1,353,585.28	3,265,027.21	40.300094	-104.549794	
3,932.0	30.04	91.72	3,590.4	11.4	1,390.3	1,353,584.07	3,265,075.11	40.300089	-104.549622	
4,026.0	31.19	94.15	3,671.3	9.0	1,438.1	1,353,582.11	3,265,122.93	40.300083	-104.549451	
4,120.0	31.14	92.66	3,751.7	6.1	1,486.7	1,353,579.74	3,265,171.51	40.300075	-104.549277	
4,213.0	31.32	92.80	3,831.2	3.8	1,534.8	1,353,577.96	3,265,219.69	40.300068	-104.549104	
4,307.0	31.20	93.32	3,911.6	1.2	1,583.5	1,353,575.88	3,265,268.42	40.300061	-104.548930	
4,401.0	31.31	92.61	3,991.9	-1.4	1,632.3	1,353,573.87	3,265,317.15	40.300054	-104.548755	
4,496.0	30.97	92.16	4,073.3	-3.4	1,681.3	1,353,572.35	3,265,366.25	40.300049	-104.548579	
4,590.0	31.13	93.66	4,153.8	-5.9	1,729.8	1,353,570.40	3,265,414.69	40.300042	-104.548405	
4,684.0	31.18	92.44	4,234.2	-8.4	1,778.3	1,353,568.34	3,265,463.27	40.300035	-104.548231	
4,778.0	31.43	92.73	4,314.5	-10.7	1,827.1	1,353,566.65	3,265,512.08	40.300029	-104.548056	
4,871.0	31.42	92.97	4,393.9	-13.1	1,875.5	1,353,564.76	3,265,560.53	40.300022	-104.547883	
4,965.0	31.05	91.81	4,474.3	-15.1	1,924.2	1,353,563.24	3,265,609.25	40.300016	-104.547708	
5,059.0	31.22	93.39	4,554.7	-17.3	1,972.8	1,353,561.55	3,265,657.82	40.300010	-104.547534	
5,153.0	30.81	93.44	4,635.3	-20.2	2,021.1	1,353,559.18	3,265,706.19	40.300002	-104.547361	
5,247.0	30.46	92.96	4,716.2	-22.9	2,069.0	1,353,557.02	3,265,754.04	40.299995	-104.547189	
5,342.0	30.35	91.80	4,798.1	-24.9	2,117.0	1,353,555.54	3,265,802.09	40.299990	-104.547017	
5,436.0	30.91	91.65	4,879.0	-26.3	2,164.9	1,353,554.60	3,265,849.97	40.299986	-104.546846	
5,530.0	30.82	91.79	4,959.7	-27.7	2,213.1	1,353,553.67	3,265,898.19	40.299982	-104.546673	
5,625.0	30.83	91.68	5,041.3	-29.2	2,261.7	1,353,552.72	3,265,946.85	40.299978	-104.546498	
5,719.0	30.82	91.68	5,122.0	-30.6	2,309.9	1,353,551.82	3,265,995.01	40.299974	-104.546326	
5,813.0	30.44	91.03	5,202.9	-31.8	2,357.7	1,353,551.19	3,266,042.90	40.299971	-104.546154	
5,906.0	30.14	91.61	5,283.2	-32.8	2,404.6	1,353,550.61	3,266,089.80	40.299968	-104.545986	
6,001.0	29.23	92.24	5,365.7	-34.4	2,451.7	1,353,549.54	3,266,136.83	40.299963	-104.545817	
6,095.0	30.21	91.57	5,447.3	-36.0	2,498.2	1,353,548.49	3,266,183.42	40.299959	-104.545650	
6,189.0	29.19	91.96	5,529.0	-37.4	2,544.8	1,353,547.56	3,266,229.98	40.299955	-104.545484	
6,283.0	29.76	91.04	5,610.8	-38.6	2,591.0	1,353,546.84	3,266,276.22	40.299952	-104.545318	
6,376.0	26.63	88.15	5,692.8	-38.4	2,634.9	1,353,547.56	3,266,320.13	40.299952	-104.545160	

Ensign

Survey Report - Geographic

Company:	Chevron DJ Basin	Local Co-ordinate Reference:	Well GEORGE 09N
Project:	SEC.21-T4N-R64W	TVD Reference:	Well @ 4742.0ft (T41 - RKB 25')
Site:	George Pad	MD Reference:	Well @ 4742.0ft (T41 - RKB 25')
Well:	GEORGE 09N	North Reference:	True
Wellbore:	GEORGE 09N	Survey Calculation Method:	Minimum Curvature
Design:	GEORGE 09N Final Surveys	Database:	US_EDM

Survey									
Measured Depth (ft)	Inclination (°)	Azimuth (°)	Vertical Depth (ft)	+N/-S (ft)	+E/-W (ft)	Map Northing (usft)	Map Easting (usft)	Latitude	Longitude
6,471.0	19.72	87.60	5,780.1	-37.0	2,672.3	1,353,549.32	3,266,357.45	40.299956	-104.545026
6,565.0	12.95	88.35	5,870.2	-36.0	2,698.7	1,353,550.57	3,266,383.85	40.299959	-104.544932
6,659.0	6.74	89.76	5,962.8	-35.7	2,714.7	1,353,551.07	3,266,399.90	40.299960	-104.544874
6,752.0	0.66	115.59	6,055.6	-35.9	2,720.7	1,353,550.92	3,266,405.85	40.299959	-104.544853
6,846.0	4.34	270.12	6,149.5	-36.1	2,717.6	1,353,550.66	3,266,402.78	40.299958	-104.544864
6,941.0	11.05	262.63	6,243.6	-37.3	2,705.0	1,353,549.37	3,266,390.16	40.299955	-104.544909
7,035.0	17.18	266.58	6,334.7	-39.3	2,682.2	1,353,547.14	3,266,367.37	40.299950	-104.544991
7,129.0	25.15	271.14	6,422.3	-39.7	2,648.3	1,353,546.35	3,266,333.49	40.299949	-104.545112
7,224.0	33.70	270.91	6,505.0	-38.9	2,601.7	1,353,546.67	3,266,286.86	40.299951	-104.545280
7,317.0	42.48	267.19	6,578.1	-40.0	2,544.4	1,353,544.93	3,266,229.60	40.299948	-104.545485
7,411.0	49.30	266.62	6,643.5	-43.7	2,477.0	1,353,540.55	3,266,162.29	40.299938	-104.545726
7,505.0	57.14	269.18	6,699.7	-46.4	2,401.9	1,353,537.08	3,266,087.16	40.299930	-104.545996
7,599.0	68.10	271.55	6,742.9	-45.7	2,318.5	1,353,536.81	3,266,003.83	40.299932	-104.546295
7,693.0	77.54	273.53	6,770.6	-41.7	2,228.9	1,353,539.87	3,265,914.18	40.299943	-104.546616
7,787.0	84.82	274.85	6,785.0	-34.9	2,136.3	1,353,545.67	3,265,821.55	40.299962	-104.546948
7,881.0	90.90	275.35	6,788.5	-26.6	2,042.8	1,353,553.02	3,265,727.95	40.299985	-104.547283
LPL - 1880' FNL & 272' FEL									
7,975.0	91.21	275.71	6,786.8	-17.5	1,949.3	1,353,561.08	3,265,634.31	40.300010	-104.547618
8,069.0	90.98	274.91	6,785.0	-8.8	1,855.7	1,353,568.78	3,265,540.65	40.300034	-104.547954
8,163.0	90.23	274.09	6,784.0	-1.5	1,762.0	1,353,575.15	3,265,446.88	40.300054	-104.548290
8,257.0	90.57	273.30	6,783.4	4.6	1,668.2	1,353,580.21	3,265,353.02	40.300071	-104.548626
8,350.0	90.19	273.11	6,782.7	9.8	1,575.3	1,353,584.42	3,265,260.13	40.300085	-104.548959
8,444.0	90.19	272.28	6,782.4	14.2	1,481.4	1,353,587.84	3,265,166.19	40.300097	-104.549296
8,538.0	89.68	272.53	6,782.5	18.2	1,387.5	1,353,590.78	3,265,072.24	40.300108	-104.549632
8,633.0	89.74	273.17	6,783.0	22.9	1,292.6	1,353,594.49	3,264,977.32	40.300121	-104.549973
8,727.0	89.90	270.99	6,783.3	26.3	1,198.7	1,353,596.90	3,264,883.36	40.300130	-104.550309
8,821.0	89.98	270.38	6,783.4	27.4	1,104.7	1,353,597.02	3,264,789.37	40.300133	-104.550646
8,914.0	89.75	271.20	6,783.6	28.7	1,011.7	1,353,597.31	3,264,696.37	40.300137	-104.550980
9,008.0	89.55	271.38	6,784.2	30.8	917.8	1,353,598.43	3,264,602.39	40.300143	-104.551317
9,102.0	90.11	270.31	6,784.5	32.2	823.8	1,353,598.81	3,264,508.39	40.300146	-104.551653
9,195.0	90.11	269.32	6,784.3	31.9	730.8	1,353,597.52	3,264,415.41	40.300146	-104.551987
9,289.0	89.66	269.31	6,784.5	30.8	636.8	1,353,595.39	3,264,321.44	40.300143	-104.552324
9,383.0	89.52	269.84	6,785.2	30.1	542.8	1,353,593.70	3,264,227.46	40.300141	-104.552661
9,476.0	89.30	269.73	6,786.1	29.7	449.8	1,353,592.35	3,264,134.48	40.300140	-104.552994
9,570.0	89.06	269.45	6,787.5	29.1	355.8	1,353,590.68	3,264,040.51	40.300138	-104.553331
9,663.0	89.51	269.11	6,788.6	27.9	262.8	1,353,588.52	3,263,947.54	40.300135	-104.553665
9,757.0	89.25	269.45	6,789.6	26.7	168.8	1,353,586.34	3,263,853.58	40.300131	-104.554001
9,851.0	89.37	269.75	6,790.8	26.1	74.8	1,353,584.68	3,263,759.60	40.300130	-104.554338
9,944.0	89.28	269.58	6,791.9	25.5	-18.2	1,353,583.14	3,263,666.63	40.300128	-104.554672
10,038.0	89.02	270.19	6,793.3	25.3	-112.1	1,353,581.95	3,263,572.65	40.300128	-104.555009
10,132.0	89.25	270.22	6,794.7	25.7	-206.1	1,353,581.29	3,263,478.67	40.300128	-104.555346
10,226.0	89.46	270.27	6,795.7	26.1	-300.1	1,353,580.69	3,263,384.68	40.300130	-104.555683
10,320.0	89.43	269.77	6,796.7	26.1	-394.1	1,353,579.72	3,263,290.69	40.300130	-104.556020
10,414.0	89.11	270.53	6,797.9	26.3	-488.1	1,353,578.96	3,263,196.71	40.300130	-104.556357
10,508.0	88.90	270.20	6,799.5	26.9	-582.1	1,353,578.56	3,263,102.73	40.300132	-104.556694
10,601.0	89.27	269.84	6,801.0	27.0	-675.1	1,353,577.60	3,263,009.75	40.300132	-104.557027
10,695.0	89.46	269.50	6,802.0	26.4	-769.1	1,353,576.06	3,262,915.77	40.300131	-104.557364
10,790.0	89.41	269.02	6,803.0	25.2	-864.1	1,353,573.82	3,262,820.81	40.300127	-104.557704
10,884.0	89.43	268.81	6,803.9	23.4	-958.0	1,353,571.04	3,262,726.86	40.300122	-104.558041
10,978.0	89.46	269.19	6,804.8	21.8	-1,052.0	1,353,568.39	3,262,632.91	40.300118	-104.558378
11,071.0	89.24	269.29	6,805.9	20.6	-1,145.0	1,353,566.17	3,262,539.94	40.300114	-104.558712
11,164.0	89.93	269.24	6,806.5	19.4	-1,238.0	1,353,563.99	3,262,446.97	40.300111	-104.559045
11,259.0	90.13	268.72	6,806.5	17.7	-1,333.0	1,353,561.28	3,262,352.02	40.300106	-104.559386
11,353.0	89.63	269.63	6,806.7	16.3	-1,427.0	1,353,558.93	3,262,258.05	40.300103	-104.559723
11,447.0	89.87	269.56	6,807.1	15.7	-1,521.0	1,353,557.26	3,262,164.07	40.300101	-104.560060

Ensign

Survey Report - Geographic

Company:	Chevron DJ Basin	Local Co-ordinate Reference:	Well GEORGE 09N
Project:	SEC.21-T4N-R64W	TVD Reference:	Well @ 4742.0ft (T41 - RKB 25')
Site:	GEORGE Pad	MD Reference:	Well @ 4742.0ft (T41 - RKB 25')
Well:	GEORGE 09N	North Reference:	True
Wellbore:	GEORGE 09N	Survey Calculation Method:	Minimum Curvature
Design:	GEORGE 09N Final Surveys	Database:	US_EDM

Survey										
Measured Depth (ft)	Inclination (°)	Azimuth (°)	Vertical Depth (ft)	+N/-S (ft)	+E/-W (ft)	Map Northing (usft)	Map Easting (usft)	Latitude	Longitude	
11,542.0	89.63	268.86	6,807.5	14.3	-1,616.0	1,353,554.94	3,262,069.11	40.300097	-104.560400	
11,636.0	89.74	269.76	6,808.0	13.2	-1,709.9	1,353,552.80	3,261,975.14	40.300094	-104.560737	
11,730.0	89.53	270.26	6,808.6	13.2	-1,803.9	1,353,551.82	3,261,881.15	40.300094	-104.561074	
11,824.0	88.96	268.64	6,809.9	12.3	-1,897.9	1,353,549.91	3,261,787.18	40.300092	-104.561411	
11,918.0	89.56	269.89	6,811.1	11.1	-1,991.9	1,353,547.71	3,261,693.23	40.300088	-104.561748	
12,012.0	89.46	270.00	6,811.9	11.0	-2,085.9	1,353,546.61	3,261,599.24	40.300088	-104.562085	
12,106.0	89.90	269.41	6,812.4	10.5	-2,179.9	1,353,545.13	3,261,505.26	40.300087	-104.562422	
12,200.0	90.28	269.15	6,812.3	9.4	-2,273.9	1,353,542.95	3,261,411.29	40.300083	-104.562759	
12,294.0	90.36	269.58	6,811.7	8.3	-2,367.9	1,353,540.90	3,261,317.32	40.300081	-104.563096	
12,388.0	90.34	269.56	6,811.2	7.6	-2,461.9	1,353,539.19	3,261,223.34	40.300079	-104.563433	
12,481.0	90.23	270.34	6,810.7	7.5	-2,554.9	1,353,538.12	3,261,130.35	40.300078	-104.563766	
12,575.0	90.39	269.39	6,810.2	7.3	-2,648.9	1,353,536.90	3,261,036.36	40.300078	-104.564103	
12,669.0	90.06	270.10	6,809.8	6.9	-2,742.9	1,353,535.48	3,260,942.38	40.300077	-104.564440	
12,762.0	89.99	269.82	6,809.8	6.8	-2,835.9	1,353,534.42	3,260,849.39	40.300076	-104.564774	
12,855.0	90.33	270.53	6,809.5	7.1	-2,928.9	1,353,533.71	3,260,756.40	40.300077	-104.565107	
12,950.0	90.43	269.53	6,808.9	7.2	-3,023.9	1,353,532.75	3,260,661.41	40.300077	-104.565448	
13,043.0	90.02	269.96	6,808.5	6.8	-3,116.9	1,353,531.35	3,260,568.43	40.300076	-104.565781	
13,138.0	90.11	269.99	6,808.4	6.7	-3,211.9	1,353,530.29	3,260,473.44	40.300076	-104.566122	
13,231.0	90.33	269.38	6,808.1	6.2	-3,304.9	1,353,528.79	3,260,380.45	40.300074	-104.566455	
13,325.0	90.42	270.05	6,807.4	5.7	-3,398.9	1,353,527.32	3,260,286.47	40.300073	-104.566792	
13,418.0	90.16	269.54	6,807.0	5.4	-3,491.9	1,353,526.00	3,260,193.49	40.300072	-104.567125	
13,512.0	90.39	269.49	6,806.5	4.6	-3,585.9	1,353,524.20	3,260,099.51	40.300070	-104.567462	
13,606.0	90.26	269.47	6,806.0	3.7	-3,679.8	1,353,522.34	3,260,005.53	40.300068	-104.567799	
13,700.0	90.18	269.58	6,805.6	3.0	-3,773.8	1,353,520.56	3,259,911.56	40.300065	-104.568136	
13,794.0	90.49	270.64	6,805.1	3.1	-3,867.8	1,353,519.74	3,259,817.57	40.300066	-104.568473	
13,888.0	90.32	269.50	6,804.4	3.3	-3,961.8	1,353,518.85	3,259,723.58	40.300066	-104.568810	
13,981.0	89.90	270.30	6,804.2	3.1	-4,054.8	1,353,517.70	3,259,630.59	40.300066	-104.569144	
14,075.0	89.34	269.72	6,804.9	3.1	-4,148.8	1,353,516.71	3,259,536.60	40.300066	-104.569481	
14,168.0	89.69	269.57	6,805.7	2.5	-4,241.8	1,353,515.15	3,259,443.62	40.300064	-104.569814	
14,262.0	89.54	269.72	6,806.3	2.0	-4,335.8	1,353,513.56	3,259,349.64	40.300062	-104.570151	
14,356.0	89.69	270.54	6,806.9	2.2	-4,429.8	1,353,512.77	3,259,255.66	40.300063	-104.570488	
14,449.0	89.48	269.84	6,807.6	2.5	-4,522.8	1,353,512.09	3,259,162.66	40.300064	-104.570821	
14,544.0	89.52	268.95	6,808.4	1.5	-4,617.8	1,353,510.07	3,259,067.70	40.300061	-104.571162	
14,636.0	89.69	269.29	6,809.1	0.1	-4,709.8	1,353,507.68	3,258,975.73	40.300057	-104.571492	
14,729.0	89.52	269.10	6,809.7	-1.2	-4,802.8	1,353,505.38	3,258,882.77	40.300053	-104.571825	
14,824.0	89.85	268.88	6,810.2	-2.9	-4,897.8	1,353,502.70	3,258,787.81	40.300049	-104.572166	
14,917.0	89.62	269.47	6,810.6	-4.3	-4,990.8	1,353,500.37	3,258,694.85	40.300045	-104.572499	
15,011.0	89.96	269.43	6,811.0	-5.2	-5,084.7	1,353,498.46	3,258,600.87	40.300042	-104.572836	
15,105.0	89.74	269.90	6,811.2	-5.7	-5,178.7	1,353,496.91	3,258,506.89	40.300041	-104.573173	
15,200.0	89.43	269.71	6,811.9	-6.0	-5,273.7	1,353,495.57	3,258,411.90	40.300040	-104.573514	
15,293.0	89.59	268.91	6,812.7	-7.1	-5,366.7	1,353,493.46	3,258,318.94	40.300037	-104.573847	
15,388.0	89.62	269.72	6,813.4	-8.3	-5,461.7	1,353,491.31	3,258,223.97	40.300034	-104.574188	
15,481.0	89.37	270.11	6,814.2	-8.4	-5,554.7	1,353,490.18	3,258,130.98	40.300033	-104.574521	
15,576.0	89.59	269.67	6,815.1	-8.6	-5,649.7	1,353,488.99	3,258,036.00	40.300033	-104.574861	
15,670.0	89.53	269.60	6,815.8	-9.2	-5,743.7	1,353,487.39	3,257,942.02	40.300031	-104.575198	
15,765.0	89.58	269.18	6,816.5	-10.2	-5,838.7	1,353,485.36	3,257,847.05	40.300028	-104.575539	
15,859.0	89.61	268.77	6,817.2	-11.9	-5,932.7	1,353,482.68	3,257,753.09	40.300023	-104.575876	
15,952.0	89.36	269.95	6,818.0	-12.9	-6,025.7	1,353,480.65	3,257,660.13	40.300021	-104.576209	
16,046.0	89.92	268.98	6,818.6	-13.8	-6,119.7	1,353,478.77	3,257,566.15	40.300018	-104.576546	
16,140.0	89.42	269.78	6,819.1	-14.8	-6,213.7	1,353,476.75	3,257,472.18	40.300015	-104.576883	
16,234.0	89.73	269.45	6,819.8	-15.5	-6,307.7	1,353,475.12	3,257,378.20	40.300013	-104.577220	
16,328.0	89.27	270.04	6,820.7	-15.9	-6,401.6	1,353,473.70	3,257,284.22	40.300012	-104.577557	
16,422.0	89.32	269.98	6,821.8	-15.9	-6,495.6	1,353,472.71	3,257,190.24	40.300012	-104.577894	
16,516.0	89.45	269.49	6,822.8	-16.3	-6,589.6	1,353,471.28	3,257,096.26	40.300011	-104.578231	
16,610.0	89.67	269.61	6,823.6	-17.0	-6,683.6	1,353,469.54	3,257,002.28	40.300009	-104.578568	

Ensign

Survey Report - Geographic

Company: Chevron DJ Basin	Local Co-ordinate Reference: Well GEORGE 09N
Project: SEC.21-T4N-R64W	TVD Reference: Well @ 4742.0ft (T41 - RKB 25')
Site: George Pad	MD Reference: Well @ 4742.0ft (T41 - RKB 25')
Well: GEORGE 09N	North Reference: True
Wellbore: GEORGE 09N	Survey Calculation Method: Minimum Curvature
Design: GEORGE 09N Final Surveys	Database: US_EDM

Survey									
Measured Depth (ft)	Inclination (°)	Azimuth (°)	Vertical Depth (ft)	+N/-S (ft)	+E/-W (ft)	Map Northing (usft)	Map Easting (usft)	Latitude	Longitude
16,704.0	89.50	269.58	6,824.2	-17.7	-6,777.6	1,353,467.87	3,256,908.30	40.300007	-104.578905
16,797.0	89.66	269.51	6,824.9	-18.4	-6,870.6	1,353,466.14	3,256,815.33	40.300005	-104.579238
16,891.0	89.53	269.93	6,825.6	-18.9	-6,964.6	1,353,464.68	3,256,721.34	40.300003	-104.579575
16,985.0	89.56	269.66	6,826.3	-19.2	-7,058.6	1,353,463.34	3,256,627.36	40.300002	-104.579912
17,078.0	89.85	268.95	6,826.8	-20.4	-7,151.6	1,353,461.22	3,256,534.39	40.299999	-104.580246
17,173.0	89.72	269.50	6,827.2	-21.6	-7,246.6	1,353,458.92	3,256,439.42	40.299996	-104.580586
17,267.0	89.54	269.64	6,827.8	-22.4	-7,340.6	1,353,457.22	3,256,345.45	40.299994	-104.580923
17,361.0	89.75	269.77	6,828.4	-22.8	-7,434.6	1,353,455.73	3,256,251.46	40.299992	-104.581260
17,454.0	89.36	269.77	6,829.1	-23.2	-7,527.6	1,353,454.37	3,256,158.48	40.299991	-104.581594
17,548.0	89.47	269.81	6,830.0	-23.6	-7,621.6	1,353,453.02	3,256,064.50	40.299990	-104.581931
17,642.0	89.55	269.50	6,830.8	-24.1	-7,715.6	1,353,451.45	3,255,970.52	40.299989	-104.582268
17,736.0	89.52	269.62	6,831.6	-24.8	-7,809.6	1,353,449.73	3,255,876.54	40.299986	-104.582605
17,829.0	89.55	269.57	6,832.4	-25.5	-7,902.6	1,353,448.08	3,255,783.57	40.299985	-104.582938
17,953.0	89.55	269.57	6,833.3	-26.4	-8,026.6	1,353,445.83	3,255,659.60	40.299982	-104.583383
BHL - 1881' FNL & 205' FWL									

Casing Points					
Measured Depth (ft)	Vertical Depth (ft)	Name	Casing Diameter (")	Hole Diameter (")	
50.0	50.0	13 3/8"	13-3/8	17-1/2	

Design Annotations				
Measured Depth (ft)	Vertical Depth (ft)	Local Coordinates		Comment
		+N/-S (ft)	+E/-W (ft)	
7,881.0	6,788.5	-26.6	2,042.8	LPL - 1880' FNL & 272' FEL
17,953.0	6,833.3	-26.4	-8,026.6	BHL - 1881' FNL & 205' FWL

Checked By: _____	Approved By: _____	Date: _____
-------------------	--------------------	-------------

Chevron DJ Basin

SEC.21-T4N-R64W

George Pad

GEORGE 09N

GEORGE 09N

GEORGE 09N Final Surveys

Anticollision Summary Report

12 April, 2024

Ensign

Anticollision Summary Report

Company:	Chevron DJ Basin	Local Co-ordinate Reference:	Well GEORGE 09N
Project:	SEC.21-T4N-R64W	TVD Reference:	Well @ 4742.0ft (T41 - RKB 25')
Reference Site:	George Pad	MD Reference:	Well @ 4742.0ft (T41 - RKB 25')
Site Error:	0.0 ft	North Reference:	True
Reference Well:	GEORGE 09N	Survey Calculation Method:	Minimum Curvature
Well Error:	0.0 ft	Output errors are at	3.50 sigma
Reference Wellbore	GEORGE 09N	Database:	US_EDM
Reference Design:	GEORGE 09N Final Surveys	Offset TVD Reference:	Offset Datum

Reference	GEORGE 09N Final Surveys		
Filter type:	GLOBAL FILTER APPLIED: All wellpaths within 200'+ 100/1000 of refere		
Interpolation Method:	MD Interval 100.0ft	Error Model:	ISCWSA
Depth Range:	Unlimited	Scan Method:	Closest Approach 3D
Results Limited by:	Maximum ellipse separation of 1,000.0 ft	Error Surface:	Combined Pedal Curve
Warning Levels Evaluated at:	3.50 Sigma	Casing Method:	N/A Unknown

Survey Program	Date	04/12/2024		
From (ft)	To (ft)	Survey (Wellbore)	Tool Name	Description
208.0	17,953.0	Survey #1 (GEORGE 09N)	MWD+IFR1+SAG+MS	OWSG MWD + IFR1 + Sag + Multi-Station Corre

Site Name Offset Well - Wellbore - Design	Reference Measured Depth (ft)	Offset Measured Depth (ft)	Distance Between Centres (ft)	Distance Between Ellipses (ft)	Separation Factor	Warning
Borys Pad						
BORYS C22-775 - BORYS C22-775 - BORYS C22-775	7,110.6	7,828.0	733.0	675.3	13.228	CC, ES
BORYS C22-775 - BORYS C22-775 - BORYS C22-775	7,200.0	7,827.8	744.4	684.5	12.912	SF
BORYS C22-783 - BORYS C22-783 - BORYS C22-783	7,255.4	8,007.5	297.5	242.7	5.634	CC, ES
BORYS C22-783 - BORYS C22-783 - BORYS C22-783	7,300.0	8,007.2	302.4	244.4	5.402	SF
Drake Pad						
DRAKE 24N - Drake 24N - Drake 24N Final Surveys	14,466.6	11,573.5	1,973.2	1,774.8	10.057	CC
DRAKE 24N - Drake 24N - Drake 24N Final Surveys	17,900.0	8,182.5	1,986.8	1,738.8	8.080	ES
DRAKE 24N - Drake 24N - Drake 24N Final Surveys	17,953.0	8,147.0	1,988.4	1,739.4	8.054	SF
George Pad						
GEORGE 01N - GEORGE 01N - GEORGE 01N Final Su	232.8	233.0	119.6	111.3	20.070	CC, ES
GEORGE 01N - GEORGE 01N - GEORGE 01N Final Su	17,953.0	18,298.9	1,759.8	1,414.1	5.119	SF
GEORGE 02N - GEORGE 02N - GEORGE 02N Final Su	419.3	420.3	102.5	93.7	15.808	CC, ES
GEORGE 02N - GEORGE 02N - GEORGE 02N Final Su	17,953.0	17,978.3	1,554.3	1,211.3	4.557	SF
GEORGE 03NA - GEORGE 03NA - GEORGE 03NA Finz	438.2	439.6	85.3	76.5	12.937	CC, ES
GEORGE 03NA - GEORGE 03NA - GEORGE 03NA Finz	17,953.0	18,154.0	1,318.8	972.8	3.832	SF
GEORGE 04N - GEORGE 04N - GEORGE 04N Final Su	423.4	424.1	74.2	65.4	11.295	CC, ES
GEORGE 04N - GEORGE 04N - GEORGE 04N Final Su	17,953.0	17,945.0	1,074.4	731.5	3.148	SF
GEORGE 05N - GEORGE 05N - GEORGE 05N Final Su	266.0	266.1	59.3	50.9	9.643	CC
GEORGE 05N - GEORGE 05N - GEORGE 05N Final Su	400.0	400.0	59.6	50.9	9.126	ES
GEORGE 05N - GEORGE 05N - GEORGE 05N Final Su	17,953.0	18,129.0	899.9	553.2	2.607	SF
GEORGE 06N - GEORGE 06N - GEORGE 06N Final Su	523.0	524.3	40.4	31.2	5.615	CC, ES
GEORGE 06N - GEORGE 06N - GEORGE 06N Final Su	17,953.0	17,947.0	674.3	330.5	1.968	SF
GEORGE 07NA - GEORGE 07NA - GEORGE 07NA Finz	0.0	0.0	30.0			
GEORGE 07NA - GEORGE 07NA - GEORGE 07NA Finz	100.0	100.0	30.0	21.8	4.785	ES
GEORGE 07NA - GEORGE 07NA - GEORGE 07NA Finz	17,953.0	18,088.0	460.9	121.1	1.359	Collision Monitoring, SF
GEORGE 08N - GEORGE 08N - GEORGE 08N Final Su	317.8	318.0	14.7	6.3	2.044	CC
GEORGE 08N - GEORGE 08N - GEORGE 08N Final Su	17,953.0	17,984.0	230.9	-100.6	0.694	Authorization, ES, SF
GEORGE 09N - GEORGE 09N - GEORGE 09N Plan #1	100.0	100.0	0.2	-8.0	-0.385	CC, SF
GEORGE 09N - GEORGE 09N - GEORGE 09N Plan #1	17,953.0	17,932.0	8.7	-320.8	0.019	Unacceptable Path, ES
GEORGE 10N - GEORGE 10N - GEORGE 10N Plan #1	100.0	103.0	15.0	7.0	2.215	CC
GEORGE 10N - GEORGE 10N - GEORGE 10N Plan #1	17,953.0	17,973.1	225.3	-100.5	0.689	Authorization, ES, SF
GEORGE 11N - GEORGE 11N - GEORGE 11N Plan #1 :	786.1	786.2	17.4	6.5	1.759	CC, ES
GEORGE 11N - GEORGE 11N - GEORGE 11N Plan #1 :	17,953.0	17,995.1	430.0	85.0	1.248	Collision Monitoring, SF
GEORGE 12N - GEORGE 12N - GEORGE 12N Plan #1	846.1	845.1	29.8	18.5	3.074	CC, ES
GEORGE 12N - GEORGE 12N - GEORGE 12N Plan #1	17,953.0	18,072.0	654.0	309.4	1.904	SF

CC - Min centre to center distance or convergent point, SF - min separation factor, ES - min ellipse separation

Ensign

Anticollision Summary Report

Company:	Chevron DJ Basin	Local Co-ordinate Reference:	Well GEORGE 09N
Project:	SEC.21-T4N-R64W	TVD Reference:	Well @ 4742.0ft (T41 - RKB 25')
Reference Site:	George Pad	MD Reference:	Well @ 4742.0ft (T41 - RKB 25')
Site Error:	0.0 ft	North Reference:	True
Reference Well:	GEORGE 09N	Survey Calculation Method:	Minimum Curvature
Well Error:	0.0 ft	Output errors are at	3.50 sigma
Reference Wellbore	GEORGE 09N	Database:	US_EDM
Reference Design:	GEORGE 09N Final Surveys	Offset TVD Reference:	Offset Datum

Site Name Offset Well - Wellbore - Design	Reference Measured Depth (ft)	Offset Measured Depth (ft)	Distance Between Centres (ft)	Distance Between Ellipses (ft)	Separation Factor	Warning
George Pad						
GEORGE 13N - GEORGE 13N - GEORGE 13N	1,108.1	1,102.3	48.2	35.3	4.383	CC, ES
GEORGE 13N - GEORGE 13N - GEORGE 13N	1,200.0	1,192.6	49.6	36.0	4.228	SF
GEORGE 13N - GEORGE 13N - GEORGE 13N Plan #3	1,108.1	1,102.3	48.2	35.3	4.383	CC, ES
GEORGE 13N - GEORGE 13N - GEORGE 13N Plan #3	17,953.0	17,358.3	868.1	533.3	2.605	SF
GEORGE 14N - GEORGE 14N - GEORGE 14N	656.7	653.3	74.4	64.6	9.692	CC
GEORGE 14N - GEORGE 14N - GEORGE 14N	900.0	892.7	75.1	63.8	8.168	ES
GEORGE 14N - GEORGE 14N - GEORGE 14N	1,300.0	1,285.0	84.8	70.5	6.929	SF
GEORGE 14N - GEORGE 14N - GEORGE 14N Plan #3	656.7	653.3	74.4	64.6	9.692	CC
GEORGE 14N - GEORGE 14N - GEORGE 14N Plan #3	900.0	892.7	75.1	63.8	8.168	ES
GEORGE 14N - GEORGE 14N - GEORGE 14N Plan #3	17,953.0	17,309.5	1,089.6	755.7	3.280	SF
GEORGE 15NA - GEORGE 15NA - GEORGE 15NA	0.0	1.0	90.0			
GEORGE 15NA - GEORGE 15NA - GEORGE 15NA	1,200.0	1,171.0	114.4	101.0	10.235	SF
GEORGE 15NA - GEORGE 15NA - GEORGE 15NA Plar	0.0	1.0	90.0			
GEORGE 15NA - GEORGE 15NA - GEORGE 15NA Plar	17,953.0	17,408.7	1,306.3	972.5	3.935	SF
GEORGE 16N - GEORGE 16N - GEORGE 16N	0.0	1.0	105.0			
GEORGE 16N - GEORGE 16N - GEORGE 16N	1,200.0	1,160.8	162.3	149.0	14.699	SF
GEORGE 16N - GEORGE 16N - GEORGE 16N Plan #3	0.0	1.0	105.0			
GEORGE 16N - GEORGE 16N - GEORGE 16N Plan #3	17,953.0	17,433.1	1,525.4	1,191.3	4.591	SF
GEORGE 17N - George 17N - George 17N	209.7	210.6	119.7	111.4	20.202	CC, ES
GEORGE 17N - George 17N - George 17N	1,100.0	1,052.0	184.6	172.1	18.067	SF
GEORGE 17N - George 17N - GEORGE 17N Plan #3 4-	209.7	210.6	119.7	111.4	20.202	CC, ES
GEORGE 17N - George 17N - GEORGE 17N Plan #3 4-	17,953.0	17,388.8	1,746.0	1,412.5	5.266	SF
GEORGE 18N - GEORGE 18N - GEORGE 18N	0.0	0.0	135.0			
GEORGE 18N - GEORGE 18N - GEORGE 18N Plan #3	0.0	0.0	135.0			
GEORGE 18N - GEORGE 18N - GEORGE 18N Plan #3	17,953.0	17,500.8	1,963.6	1,630.0	5.921	SF
GEORGE 19NA - GEORGE 19NA - GEORGE 19NA	0.0	0.0	150.0			
GEORGE 19NA - GEORGE 19NA - GEORGE 19NA	1,200.0	1,118.6	267.9	254.8	24.820	SF
GEORGE 19NA - GEORGE 19NA - GEORGE 19NA Plar	0.0	0.0	150.0			
GEORGE 19NA - GEORGE 19NA - GEORGE 19NA Plar	3,300.0	3,080.7	816.8	780.8	24.316	SF
GEORGE 20N - GEORGE 20N - GEORGE 20N Plan #2	100.0	100.0	165.0	157.0	28.229	CC, ES
GEORGE 20N - GEORGE 20N - GEORGE 20N Plan #2	1,200.0	1,116.2	287.8	274.6	25.980	SF
GEORGE 21N - GEORGE 21N - George 21N Plan #2 4-	9,823.5	6,793.5	144.3	48.5	1.518	CC, ES, SF
GEORGE 22N - GEORGE 22N - GEORGE 22N Plan #2	100.0	100.0	195.0	186.8	33.394	CC, ES
GEORGE 22N - GEORGE 22N - GEORGE 22N Plan #2	1,200.0	1,100.0	323.1	309.8	29.382	SF
GEORGE 23N - GEORGE 23N - GEORGE 23N Plan #2	100.0	100.0	209.8	201.6	36.035	CC, ES
GEORGE 23N - GEORGE 23N - GEORGE 23N Plan #2	5,300.0	4,740.7	1,979.9	1,899.6	25.426	SF
Long C20-18 Pad Sec.20-T4N-R64W						
Long C20-21D - Wellbore #1 - Wellbore #1	15,408.8	7,045.3	669.2	475.9	3.492	CC, ES, SF
Long C20-22D - Wellbore #1 - Wellbore #1	14,203.1	7,156.8	618.4	445.6	3.615	CC, ES, SF
SEC.15-T4N-R64W (Existing)						
STOCKLEY C22-79HN - STOCKLEY C22-79HN - STOC	7,500.0	8,367.6	23.3	-43.0	0.326	Unacceptable Path, CC, ES
SEC.19-T4N-R64W (Exist)						
CPC-OSTER 19-01 - CPC-OSTER 19-01 - CPC-OSTER	17,953.0	6,936.5	1,491.9	1,288.1	7.396	CC, ES, SF
OSTER PM C19-8 (Vert) - OSTER PM C19-8 - OSTER F	17,953.0	6,890.3	697.0	208.5	1.429	Collision Monitoring, CC, ES
VCTOR C19-9 - VICTOR C19-9 - VICTOR C19-9	17,953.0	6,900.0	1,576.1	1,368.0	7.652	CC, ES, SF

CC - Min centre to center distance or convergent point, SF - min separation factor, ES - min ellipse separation

Ensign

Anticollision Summary Report

Company:	Chevron DJ Basin	Local Co-ordinate Reference:	Well GEORGE 09N
Project:	SEC.21-T4N-R64W	TVD Reference:	Well @ 4742.0ft (T41 - RKB 25')
Reference Site:	George Pad	MD Reference:	Well @ 4742.0ft (T41 - RKB 25')
Site Error:	0.0 ft	North Reference:	True
Reference Well:	GEORGE 09N	Survey Calculation Method:	Minimum Curvature
Well Error:	0.0 ft	Output errors are at	3.50 sigma
Reference Wellbore	GEORGE 09N	Database:	US_EDM
Reference Design:	GEORGE 09N Final Surveys	Offset TVD Reference:	Offset Datum

Site Name Offset Well - Wellbore - Design	Reference Measured Depth (ft)	Offset Measured Depth (ft)	Distance Between Centres (ft)	Distance Between Ellipses (ft)	Separation Factor	Warning
SEC.20-T4N-R64W (Exist)						
Agricultural Products Inc 20-414 (Vert) - Agricultural Prodi	17,484.8	6,874.3	1,125.4	589.7	2.106	CC
Agricultural Products Inc 20-414 (Vert) - Agricultural Prodi	17,500.0	6,874.6	1,125.5	589.7	2.105	ES, SF
API 20-614 (Vert) - API 20-614 - API 20-614	16,182.1	6,842.4	139.9	-68.9	0.666	Authorization, CC, ES, SF
BALBOA 20-3 - BALBOA 20-3 - BALBOA 20-3	14,678.4	6,806.6	1,451.6	1,273.9	8.268	CC
BALBOA 20-3 - BALBOA 20-3 - BALBOA 20-3	14,700.0	6,806.6	1,451.9	1,273.8	8.253	ES
BALBOA 20-3 - BALBOA 20-3 - BALBOA 20-3	14,800.0	6,807.0	1,456.6	1,277.4	8.225	SF
BALBOA C20-9X - BALBOA C20-9X - BALBOA C20-9X	13,415.1	6,755.1	1,284.7	1,132.2	8.549	CC, ES
BALBOA C20-9X - BALBOA C20-9X - BALBOA C20-9X	13,500.0	6,755.8	1,287.3	1,133.7	8.499	SF
HIGHLAND 11-20 - HIGHLAND 11-20 - HIGHLAND 11-2	16,301.7	6,834.1	1,293.0	1,082.4	6.199	CC, ES
HIGHLAND 11-20 - HIGHLAND 11-20 - HIGHLAND 11-2	16,400.0	6,835.5	1,296.9	1,085.0	6.179	SF
HIGHLAND 12-20 - HIGHLAND 12-20 - HIGHLAND 12-2	17,532.4	6,864.0	1,446.5	1,209.7	6.162	CC, ES
HIGHLAND 12-20 - HIGHLAND 12-20 - HIGHLAND 12-2	17,600.0	6,864.1	1,448.1	1,210.3	6.142	SF
KLINGENBERG C20-780 - KLINGENBERG C20-780 (S	17,600.0	10,097.8	373.0	260.9	3.379	SF
KLINGENBERG C20-780 - KLINGENBERG C20-780 (S	17,700.0	10,109.8	358.3	252.0	3.426	CC, ES
KLINGENBERG C20-780 - KLINGENBERG C20-780 (S	17,600.0	10,099.7	393.2	284.2	3.668	ES, SF
KLINGENBERG C20-780 - KLINGENBERG C20-780 (S	17,700.0	10,112.0	390.9	287.1	3.833	CC
LONG C20-17 (Vert) - LONG C20-17 - LONG C20-17	14,254.3	6,770.2	698.5	528.9	4.163	CC, ES
LONG C20-17 (Vert) - LONG C20-17 - LONG C20-17	14,300.0	6,770.6	700.1	529.7	4.154	SF
LONG C20-18 (Vert) - LONG C20-18 - LONG C20-18	15,349.7	6,818.1	745.3	553.6	3.925	CC, ES
LONG C20-18 (Vert) - LONG C20-18 - LONG C20-18	15,400.0	6,818.5	746.7	554.2	3.915	SF
LONG C20-21D - LONG C20-21D - LONG C20-21D	15,411.4	7,045.3	665.6	472.1	3.472	CC, ES, SF
LONG C20-22D - LONG C20-22D - LONG C20-22D	14,205.7	7,156.8	618.4	445.5	3.614	CC, ES, SF
PREBISH 1 (Vert) - PREBISH 1 - PREBISH 1	16,170.9	6,821.3	1,189.8	668.0	2.286	CC
PREBISH 1 (Vert) - PREBISH 1 - PREBISH 1	16,200.0	6,821.7	1,189.9	667.8	2.285	ES, SF
PREBISH 2 - PREBISH 2 - PREBISH 2	17,410.9	6,877.7	53.6	-180.3	0.221	Unacceptable Path, CC, ES, SF
PREBISH C20-19 - PREBISH C20-19 - PREBISH C20-1	16,746.8	6,842.2	618.8	400.0	2.849	CC, ES, SF
TODD 1 - TODD 1 - TODD 1	13,499.9	6,741.6	1,251.0	1,096.3	8.199	CC, ES
TODD 1 - TODD 1 - TODD 1	13,600.0	6,740.8	1,254.7	1,098.2	8.125	SF
TODD 2 (Vert) - TODD 2 - TODD 2	14,871.4	6,805.5	307.2	-202.9	0.600	Authorization, CC, ES, SF
TODD 20-2 (Vert) - TODD 20-2 - TODD 20-2	14,660.4	6,801.3	955.0	446.6	1.883	CC, ES, SF
TODD 20-8 (Vert) - TODD 20-8 - TODD 20-8	13,622.2	6,795.9	219.0	-282.3	0.434	Unacceptable Path, CC, ES, SF
SEC.21-T4N-R64W (Exist)						
CHENOWETH 1 (Vert) - CHENOWETH 1 - CHENOWETH	10,906.0	6,791.1	866.8	379.2	1.782	CC, ES, SF
CHENOWETH 21-2 (Vert) - CHENOWETH 21-2 - CHENOWETH	9,556.8	6,756.2	1,119.2	637.8	2.332	CC, ES, SF
CHENOWETH 21-4 - CHENOWETH 21-4 - CHENOWETH	11,939.7	6,749.3	1,132.0	1,007.3	9.236	CC, ES
CHENOWETH 21-4 - CHENOWETH 21-4 - CHENOWETH	12,100.0	6,752.2	1,143.1	1,016.0	9.155	SF
HANSCOME C21-18 (Vert) - HANSCOME C21-18 - HANSCOME	10,261.7	6,772.1	414.7	318.0	4.373	CC, ES
HANSCOME C21-18 (Vert) - HANSCOME C21-18 - HANSCOME	10,300.0	6,772.5	416.4	319.2	4.367	SF
HANSCOME C21-19 (Vert) - HANSCOME C21-19 - HANSCOME	11,583.8	6,795.7	492.1	1.6	1.003	Collision Monitoring, CC, ES, SF
HANSCOME C21-20 (Vert) - HANSCOME C21-20 - HANSCOME	11,573.7	6,810.6	840.0	348.5	1.713	CC
HANSCOME C21-20 (Vert) - HANSCOME C21-20 - HANSCOME	11,600.0	6,810.9	840.1	348.5	1.712	ES, SF
HANSCOME C21-21 (Vert) - HANSCOME C21-21 - HANSCOME	10,227.6	6,792.8	831.2	345.8	1.716	CC, ES, SF
HANSCOME C21-79HN - HANSCOME C21-79HN - HANSCOME	13,041.9	9,546.9	75.5	0.4	1.006	Collision Monitoring, CC, ES, SF
LEONARD 2 - LEONARD 2 - LEONARD 2	12,169.4	6,785.0	215.6	87.0	1.690	CC, ES, SF
LEONARD 21-614 - LEONARD 21-614 - LEONARD 21-614	10,932.4	6,785.4	143.2	36.8	1.354	Collision Monitoring, CC, ES, SF
LEONARD 4 (Vert) - LEONARD 4 - LEONARD 4	1,971.0	1,874.8	55.5	-78.7	0.403	Unacceptable Path, CC, ES, SF
LEONARD 4 (Vert) - LEONARD 4 - LEONARD 4	9,522.7	6,759.7	65.2	-416.2	0.131	Unacceptable Path, ES, SF
TRAVELERS 21-814 - TRAVELERS 21-814 - TRAVELERS	8,656.8	6,723.5	244.8	170.1	3.353	CC, ES, SF
SEC.22-T4N-R64W (Exist)						
LYMAN 1 - LYMAN 1 - LYMAN 1	6,765.8	5,992.8	244.7	196.3	5.277	CC, ES
LYMAN 1 - LYMAN 1 - LYMAN 1	6,800.0	6,027.5	245.4	196.8	5.267	SF

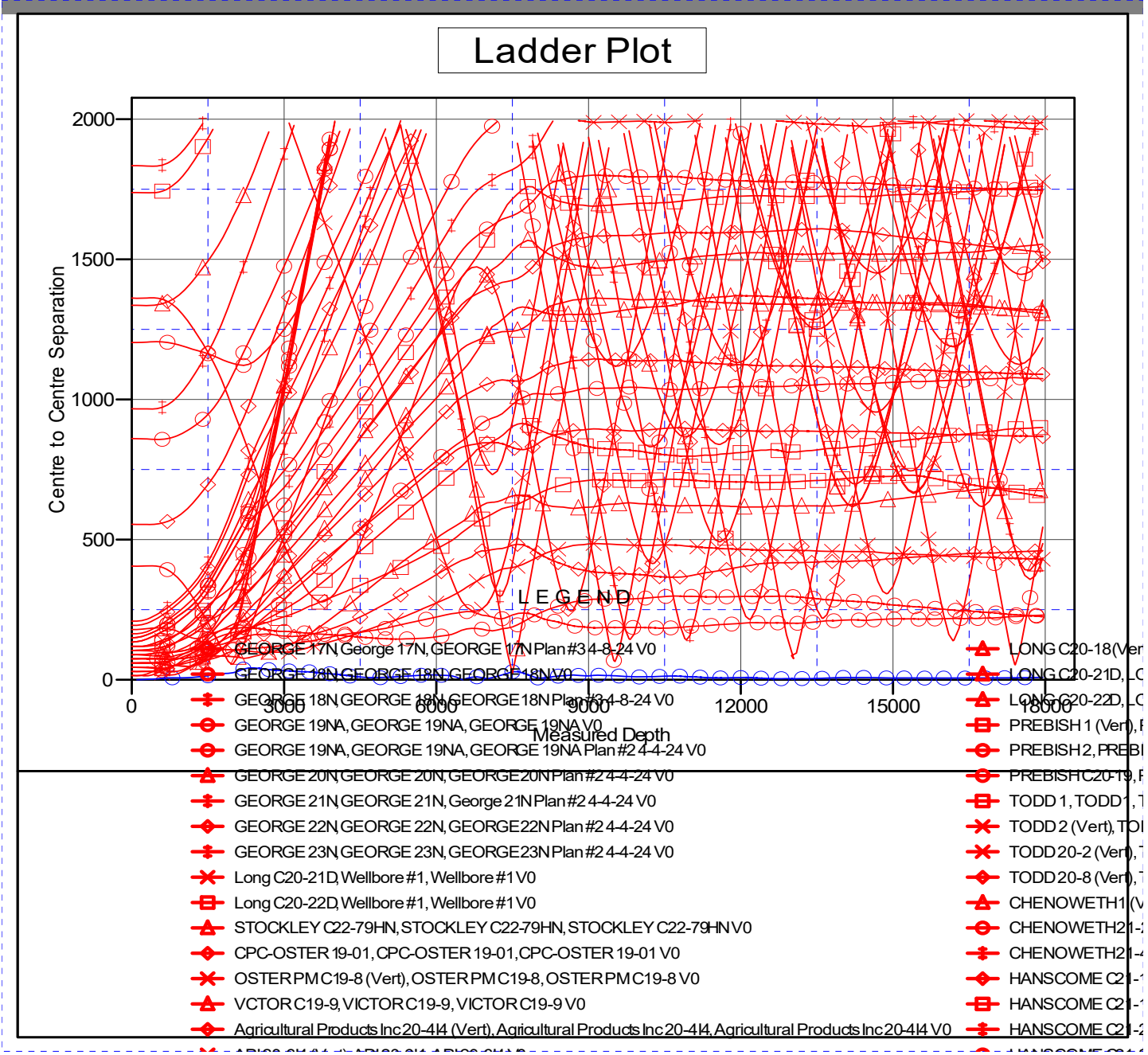
CC - Min centre to center distance or convergent point, SF - min separation factor, ES - min ellipse separation

Ensign

Anticollision Summary Report

Company:	Chevron DJ Basin	Local Co-ordinate Reference:	Well GEORGE 09N
Project:	SEC.21-T4N-R64W	TVD Reference:	Well @ 4742.0ft (T41 - RKB 25')
Reference Site:	George Pad	MD Reference:	Well @ 4742.0ft (T41 - RKB 25')
Site Error:	0.0 ft	North Reference:	True
Reference Well:	GEORGE 09N	Survey Calculation Method:	Minimum Curvature
Well Error:	0.0 ft	Output errors are at	3.50 sigma
Reference Wellbore	GEORGE 09N	Database:	US_EDM
Reference Design:	GEORGE 09N Final Surveys	Offset TVD Reference:	Offset Datum

Reference Depths are relative to Well @ 4742.0ft (T41 - RKB 25') Coordinates are relative to: GEORGE 09N
 Offset Depths are relative to Offset Datum Coordinate System is US State Plane 1983, Colorado Northern Zone
 Central Meridian is -105.500000 Grid Convergence at Surface is: 0.61°



Ensign

Anticollision Summary Report

Company:	Chevron DJ Basin	Local Co-ordinate Reference:	Well GEORGE 09N
Project:	SEC.21-T4N-R64W	TVD Reference:	Well @ 4742.0ft (T41 - RKB 25')
Reference Site:	George Pad	MD Reference:	Well @ 4742.0ft (T41 - RKB 25')
Site Error:	0.0 ft	North Reference:	True
Reference Well:	GEORGE 09N	Survey Calculation Method:	Minimum Curvature
Well Error:	0.0 ft	Output errors are at	3.50 sigma
Reference Wellbore	GEORGE 09N	Database:	US_EDM
Reference Design:	GEORGE 09N Final Surveys	Offset TVD Reference:	Offset Datum

Reference Depths are relative to Well @ 4742.0ft (T41 - RKB 25') Coordinates are relative to: GEORGE 09N
 Offset Depths are relative to Offset Datum Coordinate System is US State Plane 1983, Colorado Northern Zone
 Central Meridian is -105.500000 Grid Convergence at Surface is: 0.61°

Separation Factor Plot

