

Inspection Photos

Location Name: TEP ROCKY MOUNTAIN LLC DEVER C Pad

Location #: 335551



Photo # 3324 From entrance to location



Photo # 3325 Location



Inspection Photos

Location Name: TEP ROCKY MOUNTAIN LLC DEVER C Pad

Location #: 335551



Photo # 3326 Location



Photo # 3327 Location

Inspection Photos

Location Name: TEP ROCKY MOUNTAIN LLC DEVER C Pad

Location #: 335551



Jul 25, 2024 at 1:02:28 PM
CO

Photo # 3328 Location



Jul 25, 2024 at 1:07:51 PM
CO

Photo # 3329 Location

Inspection Photos

Location Name: TEP ROCKY MOUNTAIN LLC DEVER C Pad

Location #: 335551



Photo # 3330 Location



Photo # 3331 Mechanical Condition - Possible leak on load line & staining in secondary containment

Inspection Photos

Location Name: TEP ROCKY MOUNTAIN LLC DEVER C Pad

Location #: 335551

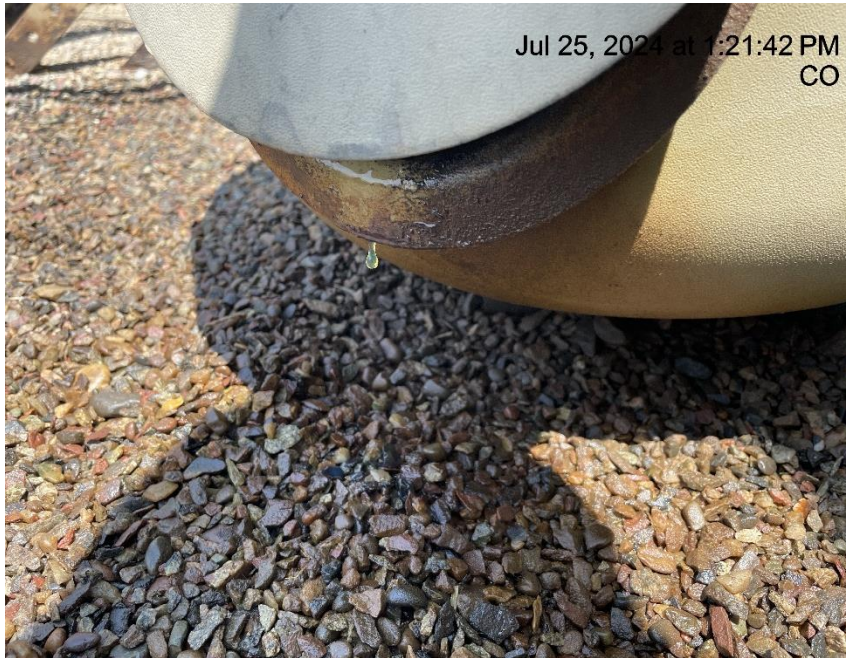


Photo # 3332 Mechanical Condition - Possible leak on load line for production tank



Photo # 3333 Mechanical Condition - Possible leak on load line for production tank

Inspection Photos

Location Name: TEP ROCKY MOUNTAIN LLC DEVER C Pad

Location #: 335551



Photo # 3334 Mechanical Condition - Possible leak on load line for production tank



Photo # 3335 Mechanical Condition - Possible leak on load line for production tank

Inspection Photos

Location Name: TEP ROCKY MOUNTAIN LLC DEVER C Pad

Location #: 335551



Photo # 3336 Mechanical Condition - Possible leak on load line for production tank



Photo # 3337 Staining in secondary containment

Inspection Photos

Location Name: TEP ROCKY MOUNTAIN LLC DEVER C Pad

Location #: 335551



Photo # 3338 Staining in secondary containment



Photo # 3339 Staining near production unit

Inspection Photos

Location Name: TEP ROCKY MOUNTAIN LLC DEVER C Pad

Location #: 335551



Photo # 3340 Staining near production unit



Photo # 3341 Dead weeds/debris near wellheads that is causing a fire hazard

Inspection Photos

Location Name: TEP ROCKY MOUNTAIN LLC DEVER C Pad

Location #: 335551



Photo # 3342 Dead weeds/debris near wellheads that is causing a fire hazard



Photo # 3343 Dead weeds/debris near wellheads that is causing a fire hazard

Inspection Photos

Location Name: TEP ROCKY MOUNTAIN LLC DEVER C Pad

Location #: 335551



Photo # 3344 Weeds/undesirable plant species on location



Photo # 3345 Weeds/undesirable plant species on location

Inspection Photos

Location Name: TEP ROCKY MOUNTAIN LLC DEVER C Pad

Location #: 335551



Photo # 3346 Weeds/undesirable plant species on location



Photo # 3347 Small amount of weeds in secondary containment

Inspection Photos

Location Name: TEP ROCKY MOUNTAIN LLC DEVER C Pad
Location #: 335551

Jul 25, 2024 at 1:25:52 PM
CO

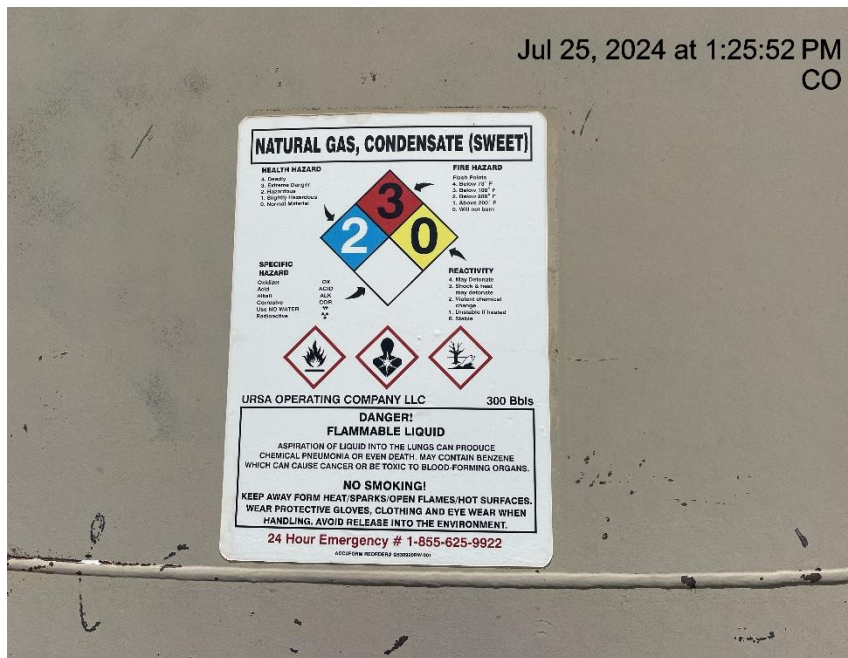


Photo # 3348 Tank label contains inaccurate info/does not comply with CECMC rules

Jul 25, 2024 at 1:25:36 PM
CO



Photo # 3349 Tank label contains inaccurate info/does not comply with CECMC rules

Inspection Photos

Location Name: TEP ROCKY MOUNTAIN LLC DEVER C Pad

Location #: 335551



Photo # 3350 Hole in liner/liner needs maintenance



Photo # 3351 Hole in liner/liner needs maintenance

Inspection Photos

Location Name: TEP ROCKY MOUNTAIN LLC DEVER C Pad

Location #: 335551



Photo # 3352 Unused hose



Photo # 3353 Unused hose

Inspection Photos

Location Name: TEP ROCKY MOUNTAIN LLC DEVER C Pad

Location #: 335551



Photo # 3354 PRV vent line does not comply with CECMC pressure safety device rules



Photo # 3355 PRV vent line does not comply with CECMC pressure safety device rules

Inspection Photos

Location Name: TEP ROCKY MOUNTAIN LLC DEVER C Pad

Location #: 335551



Photo # 3356 Sign at entrance to location has an emergency # that is disconnected/sign does not comply with CECMC signage rules



COLORADO
Energy & Carbon Management
Commission
Department of Natural Resources