



Site overview; excavation over-topped with stormwater and groundwater, weeds, inadequate BMPs.



Open excavation filled with water.



Contaminated Soil (E&P Waste) Stockpile with inadequate BMPs.



Open excavation filled with water (groundwater and surface water). Inadequate BMPs to control run-in/run-off around the excavation.



Crews returned to continue hydrovacuuming water from open excavation (Second truckload). Inadequate stormwater BMPs.



Open excavation filled with water (groundwater and surface water). Inadequate BMPs to control run-in/run-off around the excavation.



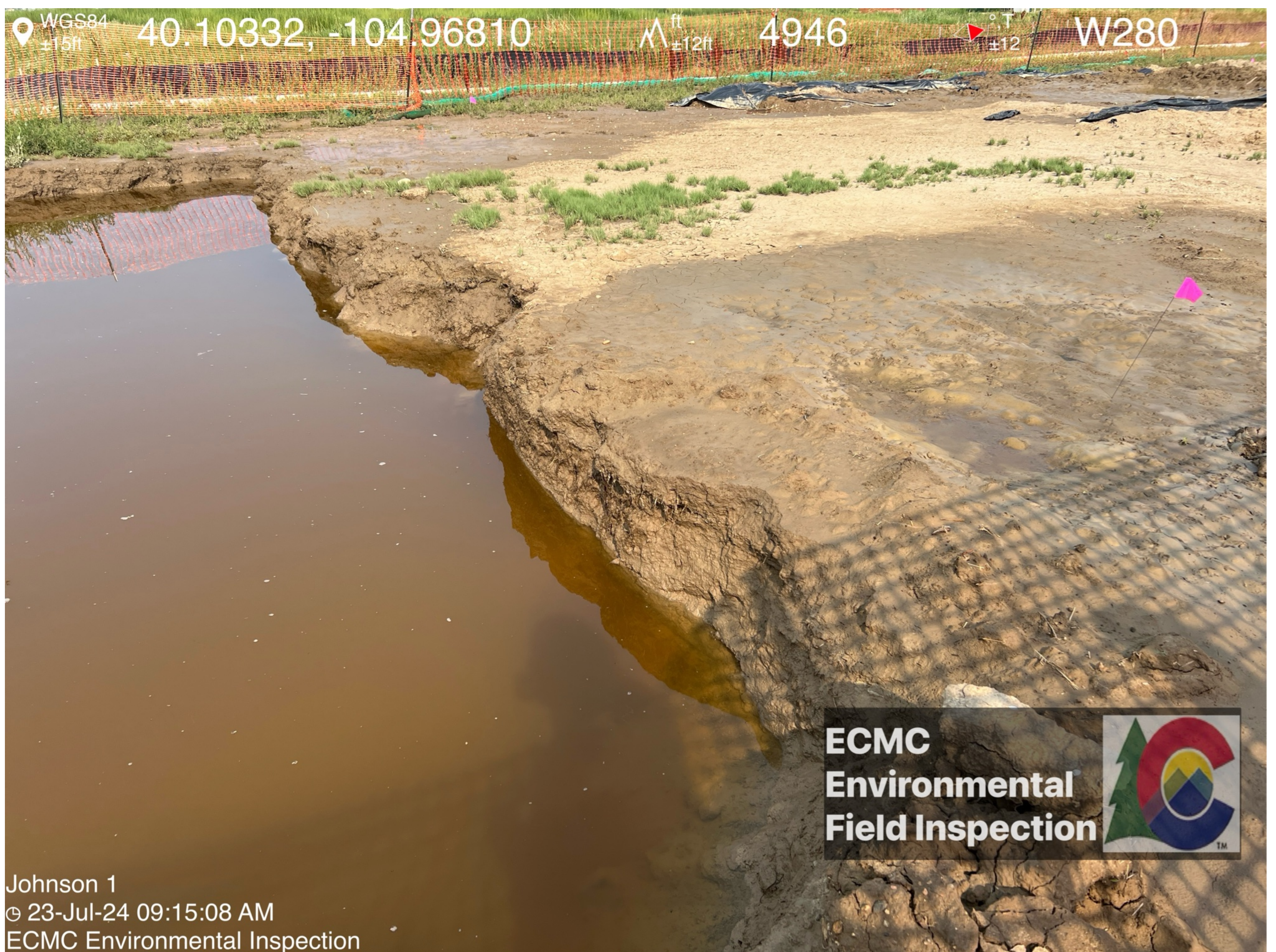
Publicly accessible walking path, inadequate BMPs to control runoff.



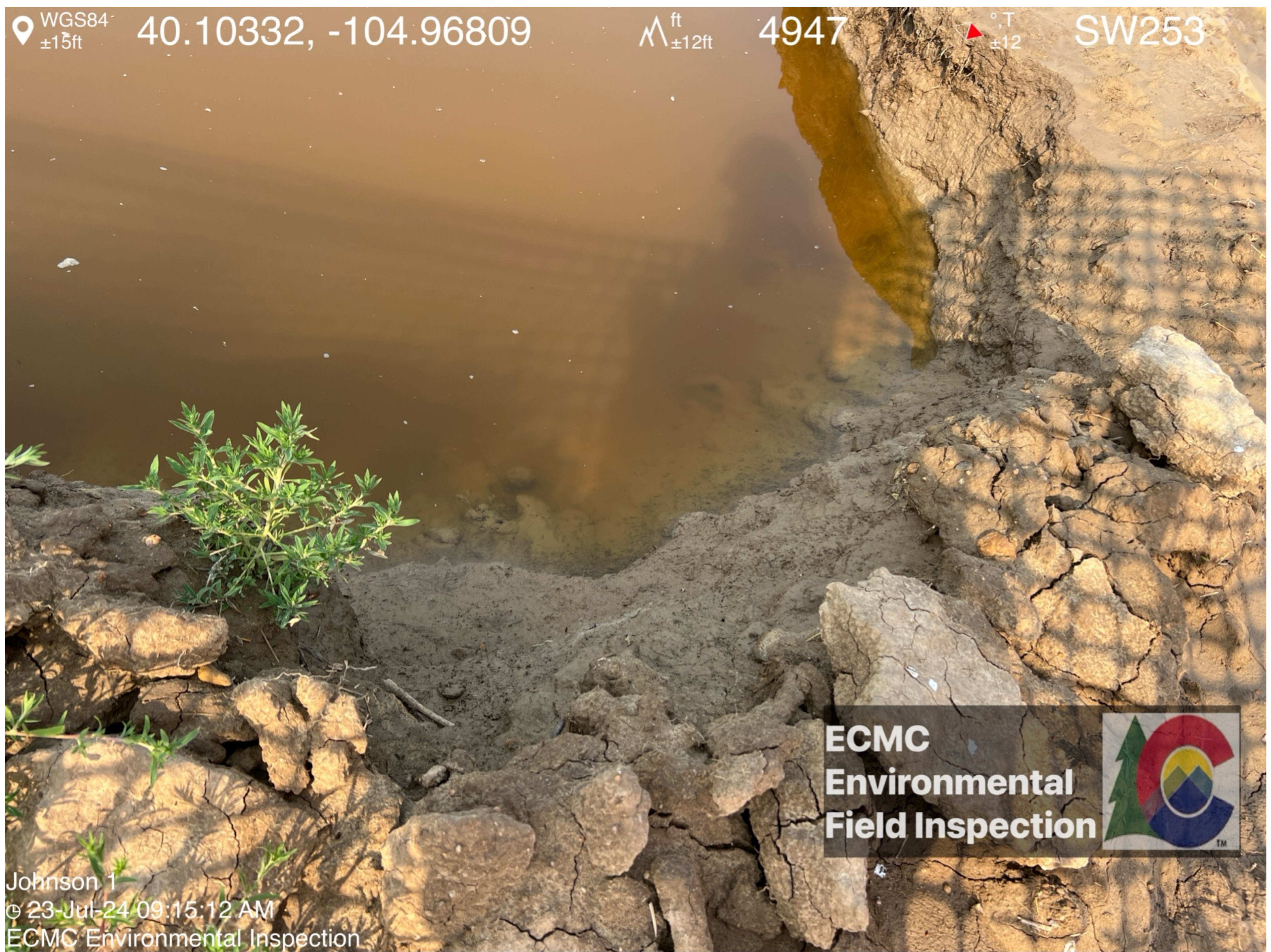
Excavation filled with surface and groundwater; note flowline bend visible in excavation, field personnel indicated additional repairs will be conducted once excavation drawn down.



Excavation filled with surface and groundwater; note flowline bend visible in excavation, field personnel indicated additional repairs will be conducted once excavation drawn down.



Soil sample location



Johnson 1
© 23-Jul-24 09:15:12 AM
ECMC Environmental Inspection

Weed growth on sidewall of excavation