



PDC Energy, Inc.
Second Quarter 2024 Groundwater Monitoring Summary

June 26, 2024

Former J&L Farms 14, 24-29 Tank Battery
SWSW Section 29 T6N R63W
Remediation # 10537

This groundwater monitoring summary has been prepared by Tasman, Inc. for the former J&L Farms 14, 24-29 tank battery.

Site History and Background

On July 19, 2017, historic hydrocarbon impacts were discovered beneath the produced water vessel during plug and abandonment activities. Following the discovery, mitigation activities were initiated and between July 19, and August 25, 2017, approximately 860 cubic yards of hydrocarbon impacted material were removed from location. During excavation activities, groundwater was encountered within the former excavation at a depth of approximately 18 feet below ground surface (bgs). Groundwater vacuum recovery activities removed approximately 220 barrels (bbls) of impacted groundwater from location. Based on conditions of approval (COAs) issued by the ECMC, seven (7) additional monitoring wells (BH07 – BH13) were installed down-gradient of the existing well network to establish point of compliance (POC) between March 2018, and September 2020. On September 14, 2021, four replacement monitoring wells (BH01R, BH04R, and BH06R – BH07R) were installed to replace monitoring wells destroyed during reclamation activities. On December 9, 2021, three (3) monitoring wells (BH07R and BH14 – BH15) were installed to replace dry well BH07R and establish POC down-gradient of monitoring well BH13. Per the approved Supplemental Form 27 (Document No. 402843224), inorganic parameters were removed from the quarterly sampling and analysis plan following the third quarter 2021.

Groundwater Monitoring Activities

On June 12, 2024, groundwater monitoring was conducted at all 15 monitoring well locations (BH01R – BH15). Monitoring well BH08 was dry upon arrival and consequently, no sample was collected from this monitoring well during the second quarter 2024. Fourteen (14) groundwater samples were submitted to Summit Scientific Laboratories for analysis of benzene, toluene, ethylbenzene, total xylenes (BTEX), naphthalene, 1,2,4-trimethylbenzene (TMB), and 1, 3, 5-TMB by EPA Method 8260B.

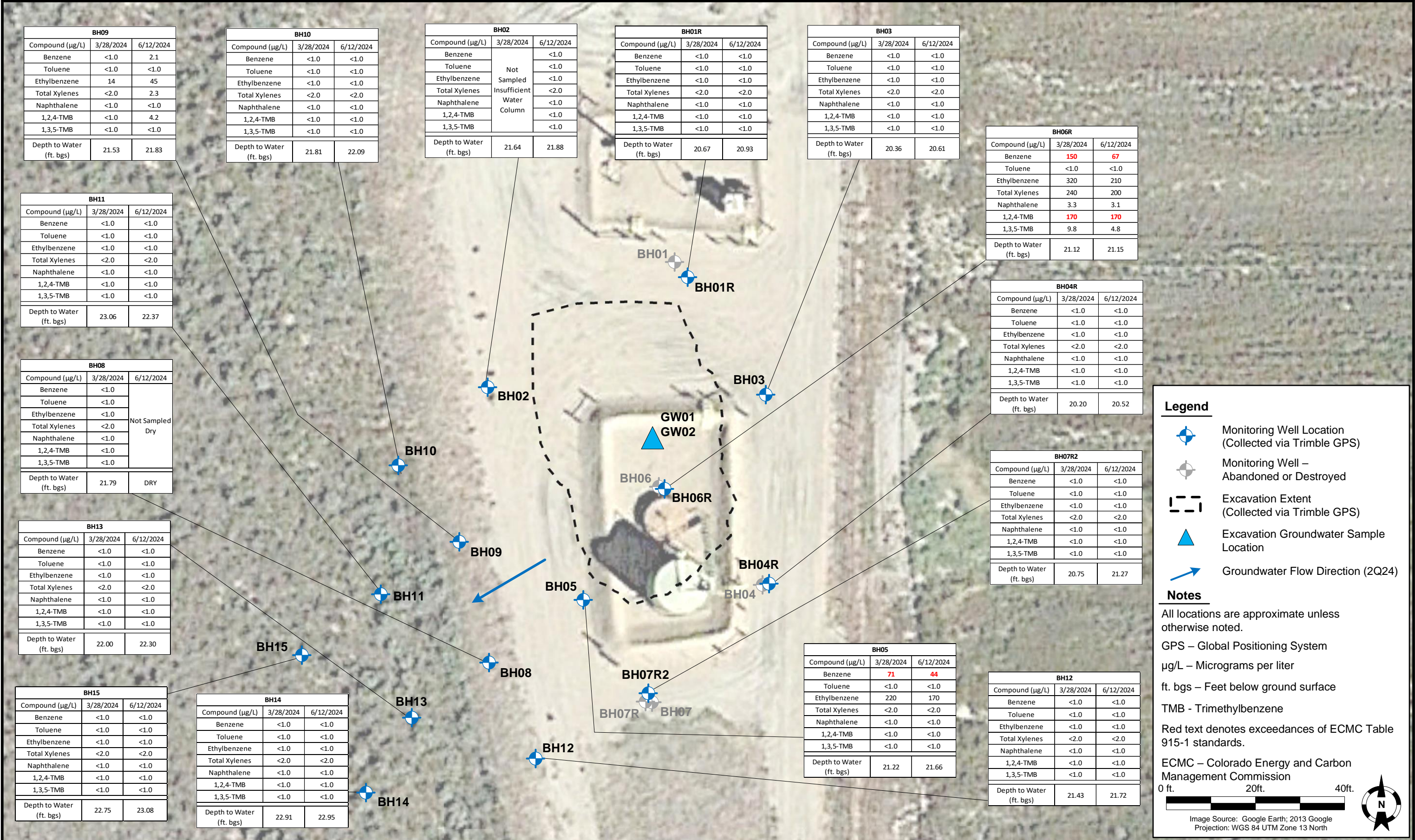
Second quarter 2024 analytical results indicated that organic compound concentrations were in exceedance of the applicable ECMC Table 915-1 groundwater standards in monitoring wells BH05 and BH06R. Organic compound concentrations were in compliance with the applicable regulatory standards in the remaining 12 sampled monitoring well locations. Sample locations and corresponding analytical

results are illustrated in Figure 1. Groundwater elevation data is illustrated in Figure 2. Groundwater analytical results are summarized in Table 1. The laboratory analytical report is included as Attachment A.

Current Remediation Activities and Path Forward

Monitored natural attenuation (MNA) was selected as the remediation strategy for this site during the fourth quarter 2017 and will continue as the selected remediation strategy through the third quarter 2024.

Third quarter 2024 groundwater sampling will be conducted during September 2024.





DATE: June 21, 2024

DESIGNED BY: C. Hamlin

DRAWN BY: J. Woffinden



TASMAN

Tasman, Inc.
6855 W. 119th Ave
Broomfield, CO 80020

PDC Energy, Inc. – DJ Basin
Former J&L Farms 14, 24-29 Tank Battery
SWSW, Section 29, Township 6 North, Range 63 West
Weld County, Colorado

**GROUNDWATER
ELEVATION CONTOUR
MAP (06/12/2024)**

**FIGURE
2**

TABLE 1
FORMER J&L FARMS 14, 24-29 TANK BATTERY
GROUNDWATER ANALYTICAL RESULTS SUMMARY TABLE
ORGANIC COMPOUNDS

Sample ID	Date Sampled	Benzene (µg/L)	Toluene (µg/L)	Ethylbenzene (µg/L)	Total Xylenes (µg/L)	Naphthalene (µg/L)	1,2,4-TMB (µg/L)	1,3,5-TMB (µg/L)	Depth to Water ⁽²⁾ (ft.)	Groundwater Elevation (ft. AMSL)
ECMC Table 915-1 Groundwater Standard (µg/L) ⁽¹⁾		5	560	700	1,400	140	67	67	-	-
BH01	3/8/2021	<1.0	<1.0	<1.0	<2.0	<1.0	<1.0	<1.0	19.21	4641.36
BH01	6/16/2021	Not Sampled - Well Destroyed							NM	NM
BH01R	9/17/2021	<1.0	<1.0	<1.0	<2.0	<1.0	<1.0	<1.0	19.44	4639.71
BH01R	12/28/2021	<1.0	<1.0	<1.0	<2.0	<1.0	<1.0	<1.0	19.80	4639.35
BH01R	3/23/2022	<1.0	<1.0	<1.0	<2.0	<1.0	<1.0	<1.0	20.19	4638.96
BH01R	6/20/2022	<1.0	<1.0	<1.0	<2.0	<1.0	<1.0	<1.0	20.20	4638.95
BH01R	9/12/2022	<1.0	<1.0	<1.0	<2.0	<1.0	<1.0	<1.0	19.64	4639.51
BH01R	12/12/2022	<1.0	<1.0	<1.0	<2.0	<1.0	<1.0	<1.0	19.76	4639.39
BH01R	3/9/2023	<1.0	<1.0	<1.0	<2.0	<1.0	<1.0	<1.0	20.45	4638.70
BH01R	6/9/2023	<1.0	<1.0	<1.0	<2.0	<1.0	<1.0	<1.0	20.22	4638.93
BH01R	9/11/2023	<1.0	<1.0	<1.0	<2.0	<1.0	<1.0	<1.0	20.24	4638.91
BH01R	12/4/2023	<1.0	<1.0	<1.0	<2.0	<1.0	<1.0	<1.0	19.99	4639.16
BH01R	3/28/2024	<1.0	<1.0	<1.0	<2.0	<1.0	<1.0	<1.0	20.67	4638.48
BH01R	6/12/2024	<1.0	<1.0	<1.0	<2.0	<1.0	<1.0	<1.0	20.93	4638.22
BH02	3/8/2021	<1.0	<1.0	<1.0	<2.0	<1.0	<1.0	<1.0	20.32	4641.26
BH02	6/29/2021	<1.0	<1.0	<1.0	<2.0	<1.0	<1.0	<1.0	20.16	4641.42
BH02	9/17/2021	<1.0	<1.0	<1.0	<2.0	<1.0	<1.0	<1.0	20.44	4639.41
BH02	12/28/2021	<1.0	<1.0	<1.0	<2.0	<1.0	<1.0	<1.0	20.62	4639.23
BH02	3/23/2022	<1.0	<1.0	<1.0	<2.0	<1.0	<1.0	<1.0	21.08	4638.77
BH02	6/20/2022	<1.0	<1.0	<1.0	<2.0	<1.0	<1.0	<1.0	21.21	4638.64
BH02	9/12/2022	<1.0	<1.0	<1.0	<2.0	<1.0	<1.0	<1.0	20.71	4639.14
BH02	12/12/2022	<1.0	<1.0	<1.0	<2.0	<1.0	<1.0	<1.0	20.72	4639.13
BH02	3/9/2023	<1.0	<1.0	<1.0	<2.0	<1.0	<1.0	<1.0	21.35	4638.50
BH02	6/9/2023	<1.0	<1.0	<1.0	<2.0	<1.0	<1.0	<1.0	21.18	4638.67
BH02	9/11/2023	<1.0	<1.0	<1.0	<2.0	<1.0	<1.0	<1.0	20.68	4639.17
BH02	12/4/2023	<1.0	<1.0	<1.0	<2.0	<1.0	<1.0	<1.0	20.94	4638.91
BH02	3/28/2024	Monitoring Well Not Sampled - Insufficient Water Column							21.64	4638.21
BH02	6/12/2024	<1.0	<1.0	<1.0	<2.0	<1.0	<1.0	<1.0	21.88	4637.97
BH03	3/8/2021	<1.0	<1.0	<1.0	<2.0	4.0	<1.0	<1.0	19.66	4641.35
BH03	6/16/2021	<1.0	<1.0	<1.0	<2.0	<1.0	<1.0	<1.0	19.64	4641.37
BH03	9/17/2021	<1.0	<1.0	<1.0	<2.0	<1.0	<1.0	<1.0	19.17	4639.67
BH03	12/28/2021	<1.0	<1.0	<1.0	<2.0	<1.0	<1.0	<1.0	19.38	4639.46
BH03	3/23/2022	<1.0	<1.0	<1.0	<2.0	<1.0	<1.0	<1.0	19.86	4638.98
BH03	6/20/2022	<1.0	<1.0	<1.0	<2.0	<1.0	<1.0	<1.0	19.91	4638.93
BH03	9/12/2022	<1.0	<1.0	<1.0	<2.0	<1.0	<1.0	<1.0	19.40	4639.44
BH03	12/12/2022	<1.0	<1.0	<1.0	<2.0	<1.0	<1.0	<1.0	19.46	4639.38
BH03	3/9/2023	<1.0	<1.0	<1.0	<2.0	<1.0	<1.0	<1.0	20.12	4638.72
BH03	6/9/2023	<1.0	<1.0	<1.0	<2.0	<1.0	<1.0	<1.0	19.84	4639.00
BH03	9/11/2023	<1.0	<1.0	<1.0	<2.0	<1.0	<1.0	<1.0	19.42	4639.42
BH03	12/4/2023	<1.0	<1.0	<1.0	<2.0	<1.0	<1.0	<1.0	19.70	4639.14
BH03	3/28/2024	<1.0	<1.0	<1.0	<2.0	<1.0	<1.0	<1.0	20.36	4638.48
BH03	6/12/2024	<1.0	<1.0	<1.0	<2.0	<1.0	<1.0	<1.0	20.61	4638.23
BH04	3/8/2021	<1.0	<1.0	<1.0	<2.0	<1.0	<1.0	<1.0	19.52	4641.26
BH04	6/16/2021	Not Sampled - Well Destroyed							NM	NM
BH04R	9/17/2021	<1.0	<1.0	<1.0	<2.0	<1.0	<1.0	<1.0	19.24	4639.46
BH04R	12/28/2021	<1.0	<1.0	<1.0	<2.0	<1.0	<1.0	<1.0	19.46	4639.24
BH04R	3/23/2022	<1.0	<1.0	<1.0	<2.0	<1.0	<1.0	<1.0	19.82	4638.88
BH04R	6/20/2022	<1.0	<1.0	<1.0	<2.0	<1.0	<1.0	<1.0	19.91	4638.79
BH04R	9/12/2022	<1.0	<1.0	<1.0	<2.0	<1.0	<1.0	<1.0	19.49	4639.21
BH04R	12/12/2022	<1.0	<1.0	<1.0	<2.0	<1.0	<1.0	<1.0	19.44	4639.26
BH04R	3/9/2023	<1.0	<1.0	<1.0	<2.0	<1.0	<1.0	<1.0	20.06	4638.64

TABLE 1
FORMER J&L FARMS 14, 24-29 TANK BATTERY
GROUNDWATER ANALYTICAL RESULTS SUMMARY TABLE
ORGANIC COMPOUNDS

Sample ID	Date Sampled	Benzene (µg/L)	Toluene (µg/L)	Ethylbenzene (µg/L)	Total Xylenes (µg/L)	Naphthalene (µg/L)	1,2,4-TMB (µg/L)	1,3,5-TMB (µg/L)	Depth to Water ⁽²⁾ (ft.)	Groundwater Elevation (ft. AMSL)
ECMC Table 915-1 Groundwater Standard (µg/L) ⁽¹⁾		5	560	700	1,400	140	67	67	-	-
BH04R	6/9/2023	<1.0	<1.0	<1.0	<2.0	<1.0	<1.0	<1.0	19.71	4638.99
BH04R	9/11/2023	<1.0	<1.0	<1.0	<2.0	<1.0	<1.0	<1.0	19.42	4639.28
BH04R	12/4/2023	<1.0	<1.0	<1.0	<2.0	<1.0	<1.0	<1.0	19.67	4639.03
BH04R	3/28/2024	<1.0	<1.0	<1.0	<2.0	<1.0	<1.0	<1.0	20.20	4638.50
BH04R	6/12/2024	<1.0	<1.0	<1.0	<2.0	<1.0	<1.0	<1.0	20.52	4638.18
BH05	3/8/2021	2.6	<1.0	<1.0	<2.0	<1.0	<1.0	<1.0	20.07	4641.14
BH05	6/29/2021	130	<1.0	190	210	<1.0	230	2.5	20.13	4641.08
BH05	9/17/2021	110	<1.0	150	110	17	140	7.9	20.31	4639.32
BH05	12/28/2021	130	<1.0	170	12	<1.0	150	<1.0	20.46	4639.17
BH05	3/23/2022	140	<1.0	240	<2.0	<1.0	150	<1.0	20.86	4638.77
BH05	6/20/2022	55	<1.0	97	<2.0	<1.0	27	<1.0	21.01	4638.62
BH05	9/12/2022	280	<1.0	300	230	<1.0	7.2	<1.0	20.62	4639.01
BH05	12/12/2022	370	<1.0	330	<2.0	<1.0	<1.0	<1.0	20.59	4639.04
BH05	3/9/2023	120	<1.0	380	<2.0	<1.0	5.1	<1.0	21.17	4638.46
BH05	6/9/2023	14	<1.0	68	<2.0	<1.0	<1.0	<1.0	20.88	4638.75
BH05	9/11/2023	100	<1.0	51	<2.0	<1.0	<1.0	<1.0	20.57	4639.06
BH05	12/4/2023	100	<1.0	260	<2.0	<1.0	<1.0	<1.0	20.78	4638.85
BH05	3/28/2024	71	<1.0	220	<2.0	<1.0	<1.0	<1.0	21.22	4638.41
BH05	6/12/2024	44	<1.0	170	<2.0	<1.0	<1.0	<1.0	21.66	4637.97
BH06	3/8/2021	140	22	180	780	<1.0	320	27	19.94	4641.26
BH06	6/16/2021	Not Sampled - Well Destroyed							NM	NM
BH06R	9/17/2021	170	54	310	1,900	150	410	130	19.75	4639.50
BH06R	12/28/2021	240	16	170	690	29	180	28	20.03	4639.22
BH06R	3/23/2022	300	34	330	850	40	270	24	20.40	4638.85
BH06R	6/20/2022	120	2.5	120	180	19	93	4.8	20.50	4638.75
BH06R	9/12/2022	270	9.4	380	1,100	79	300	60	20.03	4639.22
BH06R	12/12/2022	290	1.5	350	910	39	270	48	20.03	4639.22
BH06R	3/9/2023	150	<1.0	280	420	24	190	43	20.66	4638.59
BH06R	6/9/2023	160	<1.0	320	460	4.1	230	11	20.37	4638.88
BH06R	9/11/2023	120	<1.0	270	440	<10	190	15	19.98	4639.27
BH06R	12/4/2023	180	<1.0	300	350	17	230	20	20.28	4638.97
BH06R	3/28/2024	150	<1.0	320	240	3.3	170	9.8	21.12	4638.13
BH06R	6/12/2024	67	<1.0	210	200	3.1	170	4.8	21.15	4638.10
BH07	3/8/2021	Not Sampled - Insufficient Volume							19.28	4641.46
BH07	6/16/2021	Not Sampled - Well Destroyed							NM	NM
BH07R	9/17/2021	Not Sampled - Dry - Abandoned							Dry	Dry
BH07R2	12/28/2021	<1.0	<1.0	<1.0	<2.0	<1.0	<1.0	<1.0	20.48	4639.13
BH07R2	3/23/2022	<1.0	<1.0	<1.0	<2.0	<1.0	<1.0	<1.0	20.87	4638.74
BH07R2	6/20/2022	<1.0	<1.0	<1.0	<2.0	<1.0	<1.0	<1.0	21.07	4638.54
BH07R2	9/12/2022	<1.0	<1.0	<1.0	<2.0	<1.0	<1.0	<1.0	20.73	4638.88
BH07R2	12/12/2022	<1.0	<1.0	<1.0	<2.0	<1.0	<1.0	<1.0	20.62	4638.99
BH07R2	3/9/2023	<1.0	<1.0	<1.0	<2.0	<1.0	<1.0	<1.0	21.14	4638.47
BH07R2	6/9/2023	<1.0	<1.0	<1.0	<2.0	<1.0	<1.0	<1.0	20.79	4638.82
BH07R2	9/11/2023	<1.0	<1.0	<1.0	<2.0	<1.0	<1.0	<1.0	20.60	4639.01
BH07R2	12/4/2023	<1.0	<1.0	<1.0	<2.0	<1.0	<1.0	<1.0	20.75	4638.86
BH07R2	3/28/2024	<1.0	<1.0	<1.0	<2.0	<1.0	<1.0	<1.0	20.75	4638.34
BH07R2	6/12/2024	<1.0	<1.0	<1.0	<2.0	<1.0	<1.0	<1.0	21.27	4637.94
BH08	3/8/2021	<1.0	<1.0	<1.0	<2.0	<1.0	<1.0	<1.0	20.54	4641.02
BH08	6/16/2021	<1.0	<1.0	<1.0	<2.0	<1.0	<1.0	<1.0	20.74	4640.82
BH08	9/17/2021	16	<1.0	2.2	<2.0	<1.0	<1.0	<1.0	20.78	4639.16

TABLE 1
FORMER J&L FARMS 14, 24-29 TANK BATTERY
GROUNDWATER ANALYTICAL RESULTS SUMMARY TABLE
ORGANIC COMPOUNDS

Sample ID	Date Sampled	Benzene (µg/L)	Toluene (µg/L)	Ethylbenzene (µg/L)	Total Xylenes (µg/L)	Naphthalene (µg/L)	1,2,4-TMB (µg/L)	1,3,5-TMB (µg/L)	Depth to Water ⁽²⁾ (ft.)	Groundwater Elevation (ft. AMSL)
ECMC Table 915-1 Groundwater Standard (µg/L) ⁽¹⁾		5	560	700	1,400	140	67	67	-	-
BH08	12/28/2021	<1.0	<1.0	<1.0	<2.0	<1.0	<1.0	<1.0	20.85	4639.09
BH08	3/23/2022	<1.0	<1.0	<1.0	<2.0	<1.0	<1.0	<1.0	21.27	4638.67
BH08	6/20/2022	<1.0	<1.0	<1.0	<2.0	<1.0	<1.0	<1.0	21.46	4638.48
BH08	9/12/2022	79	<1.0	5.6	<2.0	<1.0	1.1	<1.0	21.12	4638.82
BH08	12/12/2022	18	<1.0	16	<2.0	<1.0	<1.0	<1.0	21.01	4638.93
BH08	3/9/2023	<1.0	<1.0	<1.0	<2.0	<1.0	<1.0	<1.0	21.59	4638.35
BH08	6/9/2023	<1.0	<1.0	<1.0	<2.0	<1.0	<1.0	<1.0	21.31	4638.63
BH08	9/11/2023	<1.0	<1.0	<1.0	<2.0	<1.0	<1.0	<1.0	21.04	4638.90
BH08	12/4/2023	<1.0	<1.0	<1.0	<2.0	<1.0	<1.0	<1.0	21.15	4638.79
BH08	3/28/2024	<1.0	<1.0	<1.0	<2.0	<1.0	<1.0	<1.0	21.79	4638.15
BH08	6/12/2024	Not Sampled - Dry							Dry	Dry
BH09	3/8/2021	<1.0	<1.0	1.1	<2.0	<1.0	<1.0	<1.0	20.35	4641.07
BH09	6/16/2021	<1.0	<1.0	20	<2.0	1.2	3.4	<1.0	20.46	4640.96
BH09	9/17/2021	<1.0	<1.0	9.5	<2.0	<1.0	2.4	<1.0	20.45	4639.27
BH09	12/28/2021	1.2	<1.0	14	<2.0	<1.0	<1.0	<1.0	21.53	4638.19
BH09	3/23/2022	1.1	<1.0	41	3.3	<1.0	23	<1.0	21.02	4638.70
BH09	6/20/2022	1.4	<1.0	16	<2.0	<1.0	1.4	<1.0	21.18	4638.54
BH09	9/12/2022	1.6	<1.0	25	<2.0	<1.0	4.0	<1.0	20.76	4638.96
BH09	12/12/2022	<1.0	<1.0	28	<2.0	<1.0	<1.0	<1.0	20.71	4639.01
BH09	3/9/2023	<1.0	<1.0	32	<2.0	<1.0	<1.0	<1.0	21.28	4638.44
BH09	6/9/2023	<1.0	<1.0	38	<2.0	<1.0	<1.0	<1.0	21.08	4638.64
BH09	9/11/2023	<1.0	<1.0	16	<2.0	<1.0	<1.0	<1.0	20.72	4639.00
BH09	12/4/2023	<1.0	<1.0	17	<2.0	<1.0	<1.0	<1.0	20.92	4638.80
BH09	3/28/2024	<1.0	<1.0	14	<2.0	<1.0	<1.0	<1.0	21.53	4638.19
BH09	6/12/2024	2.1	<1.0	45	2.3	<1.0	4.2	<1.0	21.83	4637.89
BH10	3/8/2021	<1.0	<1.0	<1.0	<2.0	<1.0	<1.0	<1.0	20.47	4641.17
BH10	6/16/2021	<1.0	<1.0	<1.0	<2.0	<1.0	<1.0	<1.0	20.65	4640.99
BH10	9/17/2021	<1.0	<1.0	<1.0	<2.0	<1.0	<1.0	<1.0	20.68	4639.28
BH10	12/28/2021	<1.0	<1.0	<1.0	<2.0	<1.0	<1.0	<1.0	20.92	4639.04
BH10	3/23/2022	<1.0	<1.0	<1.0	<2.0	<1.0	<1.0	<1.0	21.26	4638.70
BH10	6/20/2022	<1.0	<1.0	<1.0	<2.0	<1.0	<1.0	<1.0	21.39	4638.57
BH10	9/12/2022	<1.0	<1.0	<1.0	<2.0	<1.0	<1.0	<1.0	20.97	4638.99
BH10	12/12/2022	<1.0	<1.0	<1.0	<2.0	<1.0	<1.0	<1.0	20.95	4639.01
BH10	3/9/2023	<1.0	<1.0	<1.0	<2.0	<1.0	<1.0	<1.0	21.55	4638.41
BH10	6/9/2023	<1.0	<1.0	<1.0	<2.0	<1.0	<1.0	<1.0	21.37	4638.59
BH10	9/11/2023	<1.0	<1.0	<1.0	<2.0	<1.0	<1.0	<1.0	20.94	4639.02
BH10	12/4/2023	<1.0	<1.0	<1.0	<2.0	<1.0	<1.0	<1.0	22.14	4637.82
BH10	3/28/2024	<1.0	<1.0	<1.0	<2.0	<1.0	<1.0	<1.0	21.81	4638.15
BH10	6/12/2024	<1.0	<1.0	<1.0	<2.0	<1.0	<1.0	<1.0	22.09	4637.87
BH11	3/8/2021	<1.0	<1.0	<1.0	<2.0	<1.0	<1.0	<1.0	20.90	4641.01
BH11	6/16/2021	<1.0	<1.0	<1.0	<2.0	<1.0	<1.0	<1.0	21.10	4640.81
BH11	9/17/2021	<1.0	<1.0	4.9	<2.0	<1.0	<1.0	<1.0	21.00	4639.16
BH11	12/28/2021	<1.0	<1.0	<1.0	<2.0	<1.0	<1.0	<1.0	21.31	4638.85
BH11	3/23/2022	<1.0	<1.0	<1.0	<2.0	<1.0	<1.0	<1.0	21.53	4638.63
BH11	6/20/2022	<1.0	<1.0	<1.0	<2.0	<1.0	<1.0	<1.0	21.71	4638.45
BH11	9/12/2022	<1.0	<1.0	<1.0	<2.0	<1.0	<1.0	<1.0	21.35	4638.81
BH11	12/12/2022	<1.0	<1.0	<1.0	<2.0	<1.0	<1.0	<1.0	21.26	4638.90
BH11	3/9/2023	<1.0	<1.0	<1.0	<2.0	<1.0	<1.0	<1.0	21.82	4638.34
BH11	6/9/2023	<1.0	<1.0	<1.0	<2.0	<1.0	<1.0	<1.0	21.62	4638.54
BH11	9/11/2023	<1.0	<1.0	<1.0	<2.0	<1.0	<1.0	<1.0	21.29	4638.87
BH11	12/4/2023	<1.0	<1.0	<1.0	<2.0	<1.0	<1.0	<1.0	21.42	4638.74
BH11	3/28/2024	<1.0	<1.0	<1.0	<2.0	<1.0	<1.0	<1.0	23.06	4637.10

TABLE 1
FORMER J&L FARMS 14, 24-29 TANK BATTERY
GROUNDWATER ANALYTICAL RESULTS SUMMARY TABLE
ORGANIC COMPOUNDS

Sample ID	Date Sampled	Benzene (µg/L)	Toluene (µg/L)	Ethylbenzene (µg/L)	Total Xylenes (µg/L)	Naphthalene (µg/L)	1,2,4-TMB (µg/L)	1,3,5-TMB (µg/L)	Depth to Water ⁽²⁾ (ft.)	Groundwater Elevation (ft. AMSL)
ECMC Table 915-1 Groundwater Standard (µg/L) ⁽¹⁾		5	560	700	1,400	140	67	67	-	-
BH11	6/12/2024	<1.0	<1.0	<1.0	<2.0	<1.0	<1.0	<1.0	22.37	4637.79
BH12	3/8/2021	<1.0	<1.0	<1.0	<2.0	<1.0	<1.0	<1.0	20.37	4640.98
BH12	6/16/2021	<1.0	<1.0	<1.0	<2.0	<1.0	<1.0	<1.0	20.52	4640.83
BH12	9/17/2021	<1.0	<1.0	<1.0	<2.0	<1.0	<1.0	<1.0	20.45	4639.11
BH12	12/28/2021	<1.0	<1.0	<1.0	<2.0	<1.0	<1.0	<1.0	20.52	4639.04
BH12	3/23/2022	<1.0	<1.0	<1.0	<2.0	<1.0	<1.0	<1.0	20.92	4638.64
BH12	6/20/2022	<1.0	<1.0	<1.0	<2.0	<1.0	<1.0	<1.0	21.13	4638.43
BH12	9/12/2022	<1.0	<1.0	<1.0	<2.0	<1.0	<1.0	<1.0	20.82	4638.74
BH12	12/12/2022	<1.0	<1.0	<1.0	<2.0	<1.0	<1.0	<1.0	20.68	4638.88
BH12	3/9/2023	<1.0	<1.0	<1.0	<2.0	<1.0	<1.0	<1.0	21.19	4638.37
BH12	6/9/2023	<1.0	<1.0	<1.0	<2.0	<1.0	<1.0	<1.0	20.88	4638.68
BH12	9/11/2023	<1.0	<1.0	<1.0	<2.0	<1.0	<1.0	<1.0	20.70	4638.86
BH12	12/4/2023	<1.0	<1.0	<1.0	<2.0	<1.0	<1.0	<1.0	21.81	4637.75
BH12	3/28/2024	<1.0	<1.0	<1.0	<2.0	<1.0	<1.0	<1.0	21.43	4638.13
BH12	6/12/2024	<1.0	<1.0	<1.0	<2.0	<1.0	<1.0	<1.0	21.72	4637.84
BH13	3/8/2021	<1.0	<1.0	<1.0	<2.0	<1.0	<1.0	<1.0	20.89	4640.97
BH13	6/16/2021	<1.0	<1.0	<1.0	<2.0	<1.0	<1.0	<1.0	21.09	4640.77
BH13	9/17/2021	19	<1.0	<1.0	<2.0	<1.0	<1.0	<1.0	21.01	4639.05
BH13	12/28/2021	1.2	<1.0	<1.0	<2.0	<1.0	<1.0	<1.0	21.07	4638.99
BH13	3/23/2022	<1.0	<1.0	<1.0	<2.0	<1.0	<1.0	<1.0	21.47	4638.59
BH13	6/20/2022	<1.0	<1.0	<1.0	<2.0	<1.0	<1.0	<1.0	21.69	4638.37
BH13	9/12/2022	<1.0	<1.0	<1.0	<2.0	<1.0	<1.0	<1.0	21.36	4638.70
BH13	12/12/2022	<1.0	<1.0	<1.0	<2.0	<1.0	<1.0	<1.0	21.23	4638.83
BH13	3/9/2023	<1.0	<1.0	<1.0	<2.0	<1.0	<1.0	<1.0	21.82	4638.24
BH13	6/9/2023	<1.0	<1.0	<1.0	<2.0	<1.0	<1.0	<1.0	21.50	4638.56
BH13	9/11/2023	<1.0	<1.0	<1.0	<2.0	<1.0	<1.0	<1.0	21.27	4638.79
BH13	12/4/2023	<1.0	<1.0	<1.0	<2.0	<1.0	<1.0	<1.0	21.38	4638.68
BH13	3/28/2024	<1.0	<1.0	<1.0	<2.0	<1.0	<1.0	<1.0	22.00	4638.06
BH13	6/12/2024	<1.0	<1.0	<1.0	<2.0	<1.0	<1.0	<1.0	22.30	4637.76
BH14	12/28/2021	<1.0	<1.0	<1.0	<2.0	<1.0	<1.0	<1.0	21.75	4638.89
BH14	3/23/2022	<1.0	<1.0	<1.0	<2.0	<1.0	<1.0	<1.0	22.14	4638.50
BH14	6/20/2022	<1.0	<1.0	<1.0	<2.0	<1.0	<1.0	<1.0	22.37	4638.27
BH14	9/12/2022	<1.0	<1.0	<1.0	<2.0	<1.0	<1.0	<1.0	22.07	4638.57
BH14	12/12/2022	<1.0	<1.0	<1.0	<2.0	<1.0	<1.0	<1.0	21.91	4638.73
BH14	3/9/2023	<1.0	<1.0	<1.0	<2.0	<1.0	<1.0	<1.0	22.41	4638.23
BH14	6/9/2023	<1.0	<1.0	<1.0	<2.0	<1.0	<1.0	<1.0	22.13	4638.51
BH14	9/11/2023	<1.0	<1.0	<1.0	<2.0	<1.0	<1.0	<1.0	21.96	4638.68
BH14	12/4/2023	<1.0	<1.0	<1.0	<2.0	<1.0	<1.0	<1.0	22.03	4638.61
BH14	3/28/2024	<1.0	<1.0	<1.0	<2.0	<1.0	<1.0	<1.0	22.91	4637.73
BH14	6/12/2024	<1.0	<1.0	<1.0	<2.0	<1.0	<1.0	<1.0	22.95	4637.69
BH15	12/28/2021	<1.0	<1.0	<1.0	<2.0	<1.0	<1.0	<1.0	21.85	4638.92
BH15	3/23/2022	<1.0	<1.0	<1.0	<2.0	<1.0	<1.0	<1.0	22.25	4638.52
BH15	6/20/2022	<1.0	<1.0	<1.0	<2.0	<1.0	<1.0	<1.0	22.46	4638.31
BH15	9/12/2022	<1.0	<1.0	<1.0	<2.0	<1.0	<1.0	<1.0	22.13	4638.64
BH15	12/12/2022	<1.0	<1.0	<1.0	<2.0	<1.0	<1.0	<1.0	21.99	4638.78
BH15	3/9/2023	<1.0	<1.0	<1.0	<2.0	<1.0	<1.0	<1.0	22.53	4638.24
BH15	6/9/2023	<1.0	<1.0	<1.0	<2.0	<1.0	<1.0	<1.0	22.33	4638.44
BH15	9/11/2023	<1.0	<1.0	<1.0	<2.0	<1.0	<1.0	<1.0	22.06	4638.71
BH15	12/4/2023	<1.0	<1.0	<1.0	<2.0	<1.0	<1.0	<1.0	22.15	4638.62
BH15	3/28/2024	<1.0	<1.0	<1.0	<2.0	<1.0	<1.0	<1.0	22.75	4638.02
BH15	6/12/2024	<1.0	<1.0	<1.0	<2.0	<1.0	<1.0	<1.0	23.08	4637.69

TABLE 1
FORMER J&L FARMS 14, 24-29 TANK BATTERY
GROUNDWATER ANALYTICAL RESULTS SUMMARY TABLE
ORGANIC COMPOUNDS

Sample ID	Date Sampled	Benzene (µg/L)	Toluene (µg/L)	Ethylbenzene (µg/L)	Total Xylenes (µg/L)	Naphthalene (µg/L)	1,2,4-TMB (µg/L)	1,3,5-TMB (µg/L)	Depth to Water ⁽²⁾ (ft.)	Groundwater Elevation (ft. AMSL)
ECMC Table 915-1 Groundwater Standard (µg/L) ⁽¹⁾		5	560	700	1,400	140	67	67	-	-

Notes:

1. Groundwater standards referenced from 2 CCR 404-1, Table 915-1, January 15, 2021.

2. Depth to water measurements were measured from ground surface for excavation samples. Monitoring well measurements were collected from top of casing and adjusted using survey data to reflect depth of water from ground surface.

TMB = Trimethylbenzene

ECMC = Colorado Energy and Carbon Management Commission

µg/L = Micrograms per liter

(<) = Analytical result is less than the indicated laboratory reporting limit.

ft. = Feet

AMSL = Above Mean Sea Level

NM = Not measured

BOLD = Analytical result is in exceedance of applicable standard.

Attachment A

Summit Scientific

4653 Table Mountain Drive, Golden, Colorado 80403

303.277.9310

June 25, 2024

Karen Olson

Tasman Geosciences

6855 W. 119th Ave.

Broomfield, CO 80020

RE: PDC - J&L Farms 14,24-29 Tank Battery

Work Order #2406173

Enclosed are the results of analyses for samples received by Summit Scientific on 06/12/24 17:44. If you have any questions concerning this report, please feel free to contact me.

Sincerely,

A handwritten signature in black ink, appearing to read "Natalie Tessier". The signature is fluid and cursive, with the first name being more prominent.

Natalie Tessier For Paul Shrewsbury

President



Tasman Geosciences
6855 W. 119th Ave.
Broomfield CO, 80020

Project: PDC - J&L Farms 14,24-29 Tank Battery

Project Number: [none]
Project Manager: Karen Olson

Reported:
06/25/24 08:43


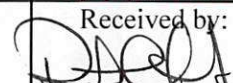
ANALYTICAL REPORT FOR SAMPLES

Sample ID	Laboratory ID	Matrix	Date Sampled	Date Received
BH01R	2406173-01	Water	06/12/24 10:47	06/12/24 17:44
BH02	2406173-02	Water	06/12/24 10:48	06/12/24 17:44
BH03	2406173-03	Water	06/12/24 11:01	06/12/24 17:44
BH04R	2406173-04	Water	06/12/24 11:05	06/12/24 17:44
BH05	2406173-05	Water	06/12/24 12:07	06/12/24 17:44
BH06R	2406173-06	Water	06/12/24 12:18	06/12/24 17:44
BH07R2	2406173-07	Water	06/12/24 11:15	06/12/24 17:44
BH09	2406173-08	Water	06/12/24 11:16	06/12/24 17:44
BH10	2406173-09	Water	06/12/24 11:26	06/12/24 17:44
BH11	2406173-10	Water	06/12/24 11:31	06/12/24 17:44
BH12	2406173-11	Water	06/12/24 11:35	06/12/24 17:44
BH13	2406173-12	Water	06/12/24 11:45	06/12/24 17:44
BH14	2406173-13	Water	06/12/24 11:47	06/12/24 17:44
BH15	2406173-14	Water	06/12/24 12:02	06/12/24 17:44

Summit Scientific

The results in this report apply to the samples analyzed in accordance with the chain of custody document. This analytical report must be reproduced in its entirety.

Client: PDC/Tasman				Send Data To: Project Manager: Karen Olson				Send Invoice To: Company: PDC Energy																
Address: 6855 W 119th Ave				E-Mail: karen.olson@chevron.com				Project Name/Location:																
City/State/Zip: Broomfield / CO / 80020								AFE#:																
Phone: 970-214-7901				Project Name: J + L Farms 14, 24-29				PO/Billing Codes:																
Sampler Name: Lillian Buck				Project Number: Tanu Battery				Contact: Karen Olson																
				Preservative		Matrix		Analysis Requested				Special Instructions												
ID	Sample Description	Date Sampled	Time Sampled	# of containers	HCl	HNO3	None	Other	Water	Soil	Air-Canister #	Other	BTEXN - 8260B	1,2,4 & 1,3,5 TMB	TDS, Cl, SO4									pH, EC, SAR by saturated paste
1	BH01R	6/12/24	1047	3	X				X				X	X										
2	BH02		1048	1																				
3	BH03		1101	3																				
4	BH04R		1105	1																				
5	BH05		1207	1																				
6	BH06R		1218	1																				
7	BH07R2		1115	1																				
8	BH09		1116	1																				
9	BH10		1126	1																				
10	BH11		1131	1																				
11	BH12		1135	1																				
12	BH13		1145	1																				
13	BH14		1147	3																				
14	BH15		1202	1																				
15																								

Relinquished by: 	Date/Time: 6/12/24 1434	Received by: Tasman Lochbox	Date/Time: 6/12/24 1434	TAT Business Days	Field DO	Notes:
Relinquished by: Tasman Lochbox	Date/Time: 6/12/24 1744	Received by: 	Date/Time: 6/12/24 1744	Same Day	Field EC	
				1 Day	Field ORP	
				2 Days	Field pH	
				3 Days	Field Temp.	
				Standard	Field Turb.	
Temperature Upon Receipt: 7.0	Corrected Temperature: 0	IR gun #: 1	HNO3 lot #:			

S₂

Sample Receipt Checklist

S2 Work Order# 2406173Client: PortasmanClient Project ID: J+L FarmsTank Battery
14,24-29Shipped Via: H.D./P.U./FedEx/UPS/USPS/Other ☐Airbill #: ☐

<input type="checkbox"/>	<input type="checkbox"/>	<input type="checkbox"/>	<input type="checkbox"/>	<input type="checkbox"/>
--------------------------	--------------------------	--------------------------	--------------------------	--------------------------

Matrix (Check all that apply)

Air ☐Soil/Solid ☐Water ☒Other ☐

Temp (°C)

7.0

Thermometer #

1

	Yes	No	N/A	Comments (if any)
If samples require cooling, is the temperature < 6°C? ⁽¹⁾ NOTE: If samples are delivered the same day of sampling, this requirement is met if there is evidence that cooling has begun.	<input checked="" type="checkbox"/>	<input type="checkbox"/>	<input type="checkbox"/>	<u>on ice</u>
If custody seals are present, are they intact? ⁽¹⁾	<input checked="" type="checkbox"/>	<input type="checkbox"/>	<input type="checkbox"/>	
Are samples due within 48 hours present?	<input type="checkbox"/>	<input checked="" type="checkbox"/>	<input type="checkbox"/>	
Are water samples with short hold times present? Note the short hold analysis in the comments column - pH, Nitrate/Nitrite, Ferrous Iron (Fe ²⁺), Hexavalent Chromium (Cr ⁶⁺ , Cr VI), COD/BOD, Total Coliform, E. Coli, Total Residual Chlorine (TRC), Dissolved Oxygen	<input type="checkbox"/>	<input checked="" type="checkbox"/>	<input type="checkbox"/>	
Is a chain-of-custody (COC) form present and filled out Completely? ⁽¹⁾	<input checked="" type="checkbox"/>	<input type="checkbox"/>	<input type="checkbox"/>	
Is the COC properly relinquished by the client w/ date and time recorded? ⁽¹⁾	<input checked="" type="checkbox"/>	<input type="checkbox"/>	<input type="checkbox"/>	
Were all samples received intact? ⁽¹⁾	<input checked="" type="checkbox"/>	<input type="checkbox"/>	<input type="checkbox"/>	
Was adequate sample volume provided? ⁽¹⁾	<input checked="" type="checkbox"/>	<input type="checkbox"/>	<input type="checkbox"/>	
Does the COC agree with the number and type of sample bottles received? ⁽¹⁾	<input checked="" type="checkbox"/>	<input type="checkbox"/>	<input type="checkbox"/>	
Do the sample IDs on the bottle labels match the COC? ⁽¹⁾	<input checked="" type="checkbox"/>	<input type="checkbox"/>	<input type="checkbox"/>	
For volatiles in water – is there headspace present? If yes, contact client and note in narrative.	<input type="checkbox"/>	<input checked="" type="checkbox"/>	<input type="checkbox"/>	
Are samples preserved that require preservation (excluding cooling)? ⁽¹⁾ Note the type of preservative in the comments column – HCl, H ₂ SO ₄ , NaOH, HNO ₃ , etc.	<input checked="" type="checkbox"/>	<input type="checkbox"/>	<input type="checkbox"/>	<u>HCl</u>
If samples are acid preserved for metals, is the pH ≤ 2? ⁽¹⁾ Record the pH in Comments.	<input type="checkbox"/>	<input type="checkbox"/>	<input checked="" type="checkbox"/>	
If dissolved metals are requested, were samples field filtered?	<input type="checkbox"/>	<input type="checkbox"/>	<input checked="" type="checkbox"/>	
Additional Comments (if any):				

⁽¹⁾ If NO, then contact the client before proceeding with analysis and note in case narrative.
AS
Custodian Printed Name

6/12/24
Date/Time



Tasman Geosciences
6855 W. 119th Ave.
Broomfield CO, 80020

Project: PDC - J&L Farms 14,24-29 Tank Battery

Project Number: [none]
Project Manager: Karen Olson

Reported:
06/25/24 08:43

BH01R
2406173-01 (Water)

Summit Scientific

Volatile Organic Compounds by EPA Method 8260B

Date Sampled: **06/12/24 10:47**

Analyte	Result	Reporting		Dilution	Batch	Prepared	Analyzed	Method	Notes
		Limit	Units						
Benzene	ND	1.0	ug/l	1	BHF0370	06/13/24	06/14/24	EPA 8260B	
Toluene	ND	1.0	"	"	"	"	"	"	
Ethylbenzene	ND	1.0	"	"	"	"	"	"	
Xylenes (total)	ND	2.0	"	"	"	"	"	"	
Naphthalene	ND	1.0	"	"	"	"	"	"	
1,2,4-Trimethylbenzene	ND	1.0	"	"	"	"	"	"	
1,3,5-Trimethylbenzene	ND	1.0	"	"	"	"	"	"	

Date Sampled: **06/12/24 10:47**

Analyte	Result	Reporting		Dilution	Batch	Prepared	Analyzed	Method	Notes
		Limit	Units						
Surrogate: 1,2-Dichloroethane-d4	11.1	83.4 %	23-173		"	"	"	"	
Surrogate: Toluene-d8	12.9	96.9 %	20-170		"	"	"	"	
Surrogate: 4-Bromofluorobenzene	12.6	94.4 %	21-167		"	"	"	"	

Summit Scientific

The results in this report apply to the samples analyzed in accordance with the chain of custody document. This analytical report must be reproduced in its entirety.



Tasman Geosciences
6855 W. 119th Ave.
Broomfield CO, 80020

Project: PDC - J&L Farms 14,24-29 Tank Battery

Project Number: [none]
Project Manager: Karen Olson

Reported:
06/25/24 08:43

BH02
2406173-02 (Water)

Summit Scientific

Volatile Organic Compounds by EPA Method 8260B

Date Sampled: **06/12/24 10:48**

Analyte	Result	Reporting	Units	Dilution	Batch	Prepared	Analyzed	Method	Notes
		Limit							
Benzene	ND	1.0	ug/l	1	BHF0370	06/13/24	06/14/24	EPA 8260B	
Toluene	ND	1.0	"	"	"	"	"	"	
Ethylbenzene	ND	1.0	"	"	"	"	"	"	
Xylenes (total)	ND	2.0	"	"	"	"	"	"	
Naphthalene	ND	1.0	"	"	"	"	"	"	
1,2,4-Trimethylbenzene	ND	1.0	"	"	"	"	"	"	
1,3,5-Trimethylbenzene	ND	1.0	"	"	"	"	"	"	

Date Sampled: **06/12/24 10:48**

Analyte	Result	Reporting	Units	Dilution	Batch	Prepared	Analyzed	Method	Notes
		Limit							
Surrogate: 1,2-Dichloroethane-d4	11.2	83.6 %	23-173		"	"	"	"	
Surrogate: Toluene-d8	12.8	96.2 %	20-170		"	"	"	"	
Surrogate: 4-Bromofluorobenzene	12.4	92.9 %	21-167		"	"	"	"	

Summit Scientific

The results in this report apply to the samples analyzed in accordance with the chain of custody document. This analytical report must be reproduced in its entirety.



Tasman Geosciences
6855 W. 119th Ave.
Broomfield CO, 80020

Project: PDC - J&L Farms 14,24-29 Tank Battery

Project Number: [none]
Project Manager: Karen Olson

Reported:
06/25/24 08:43

BH03
2406173-03 (Water)

Summit Scientific

Volatile Organic Compounds by EPA Method 8260B

Date Sampled: **06/12/24 11:01**

Analyte	Result	Reporting	Units	Dilution	Batch	Prepared	Analyzed	Method	Notes
		Limit							
Benzene	ND	1.0	ug/l	1	BHF0370	06/13/24	06/14/24	EPA 8260B	
Toluene	ND	1.0	"	"	"	"	"	"	
Ethylbenzene	ND	1.0	"	"	"	"	"	"	
Xylenes (total)	ND	2.0	"	"	"	"	"	"	
Naphthalene	ND	1.0	"	"	"	"	"	"	
1,2,4-Trimethylbenzene	ND	1.0	"	"	"	"	"	"	
1,3,5-Trimethylbenzene	ND	1.0	"	"	"	"	"	"	

Date Sampled: **06/12/24 11:01**

Analyte	Result	Reporting	Units	Dilution	Batch	Prepared	Analyzed	Method	Notes
		Limit							
Surrogate: 1,2-Dichloroethane-d4	11.1	83.0 %	23-173		"	"	"	"	
Surrogate: Toluene-d8	13.0	97.3 %	20-170		"	"	"	"	
Surrogate: 4-Bromofluorobenzene	12.4	93.2 %	21-167		"	"	"	"	

Summit Scientific

The results in this report apply to the samples analyzed in accordance with the chain of custody document. This analytical report must be reproduced in its entirety.



Tasman Geosciences
6855 W. 119th Ave.
Broomfield CO, 80020

Project: PDC - J&L Farms 14,24-29 Tank Battery

Project Number: [none]
Project Manager: Karen Olson

Reported:
06/25/24 08:43

BH04R
2406173-04 (Water)

Summit Scientific

Volatile Organic Compounds by EPA Method 8260B

Date Sampled: **06/12/24 11:05**

Analyte	Result	Reporting	Units	Dilution	Batch	Prepared	Analyzed	Method	Notes
		Limit							
Benzene	ND	1.0	ug/l	1	BHF0370	06/13/24	06/14/24	EPA 8260B	
Toluene	ND	1.0	"	"	"	"	"	"	
Ethylbenzene	ND	1.0	"	"	"	"	"	"	
Xylenes (total)	ND	2.0	"	"	"	"	"	"	
Naphthalene	ND	1.0	"	"	"	"	"	"	
1,2,4-Trimethylbenzene	ND	1.0	"	"	"	"	"	"	
1,3,5-Trimethylbenzene	ND	1.0	"	"	"	"	"	"	

Date Sampled: **06/12/24 11:05**

Analyte	Result	Reporting	Units	Dilution	Batch	Prepared	Analyzed	Method	Notes
		Limit							
Surrogate: 1,2-Dichloroethane-d4	11.4	85.7 %	23-173		"	"	"	"	
Surrogate: Toluene-d8	13.1	98.1 %	20-170		"	"	"	"	
Surrogate: 4-Bromofluorobenzene	12.4	92.7 %	21-167		"	"	"	"	

Summit Scientific

The results in this report apply to the samples analyzed in accordance with the chain of custody document. This analytical report must be reproduced in its entirety.



Tasman Geosciences
6855 W. 119th Ave.
Broomfield CO, 80020

Project: PDC - J&L Farms 14,24-29 Tank Battery

Project Number: [none]
Project Manager: Karen Olson

Reported:
06/25/24 08:43

BH05
2406173-05 (Water)

Summit Scientific

Volatile Organic Compounds by EPA Method 8260B

Date Sampled: **06/12/24 12:07**

Analyte	Result	Reporting		Units	Dilution	Batch	Prepared	Analyzed	Method	Notes
		Limit								
Benzene	44	1.0		ug/l	1	BHF0370	06/13/24	06/14/24	EPA 8260B	
Toluene	ND	1.0		"	"	"	"	"	"	
Ethylbenzene	170	1.0		"	"	"	"	"	"	
Xylenes (total)	ND	2.0		"	"	"	"	"	"	
Naphthalene	ND	1.0		"	"	"	"	"	"	
1,2,4-Trimethylbenzene	ND	1.0		"	"	"	"	"	"	
1,3,5-Trimethylbenzene	ND	1.0		"	"	"	"	"	"	

Date Sampled: **06/12/24 12:07**

Analyte	Result	Reporting		Units	Dilution	Batch	Prepared	Analyzed	Method	Notes
		Limit								
Surrogate: 1,2-Dichloroethane-d4	11.4	85.6 %		23-173		"	"	"	"	
Surrogate: Toluene-d8	13.3	100 %		20-170		"	"	"	"	
Surrogate: 4-Bromofluorobenzene	13.5	101 %		21-167		"	"	"	"	

Summit Scientific

The results in this report apply to the samples analyzed in accordance with the chain of custody document. This analytical report must be reproduced in its entirety.



Tasman Geosciences
6855 W. 119th Ave.
Broomfield CO, 80020

Project: PDC - J&L Farms 14,24-29 Tank Battery

Project Number: [none]
Project Manager: Karen Olson

Reported:
06/25/24 08:43

BH06R
2406173-06 (Water)

Summit Scientific

Volatile Organic Compounds by EPA Method 8260B

Date Sampled: **06/12/24 12:18**

Analyte	Result	Reporting	Units	Dilution	Batch	Prepared	Analyzed	Method	Notes
		Limit							
Benzene	67	1.0	ug/l	1	BHF0370	06/13/24	06/14/24	EPA 8260B	
Toluene	ND	1.0	"	"	"	"	"	"	
Ethylbenzene	210	1.0	"	"	"	"	"	"	
Xylenes (total)	200	2.0	"	"	"	"	"	"	
Naphthalene	3.1	1.0	"	"	"	"	"	"	
1,2,4-Trimethylbenzene	170	1.0	"	"	"	"	"	"	
1,3,5-Trimethylbenzene	4.8	1.0	"	"	"	"	"	"	

Date Sampled: **06/12/24 12:18**

Analyte	Result	Reporting	Units	Dilution	Batch	Prepared	Analyzed	Method	Notes
		Limit							
Surrogate: 1,2-Dichloroethane-d4	12.3	92.3 %	23-173		"	"	"	"	
Surrogate: Toluene-d8	13.1	98.3 %	20-170		"	"	"	"	
Surrogate: 4-Bromofluorobenzene	13.7	103 %	21-167		"	"	"	"	

Summit Scientific

The results in this report apply to the samples analyzed in accordance with the chain of custody document. This analytical report must be reproduced in its entirety.



Tasman Geosciences
6855 W. 119th Ave.
Broomfield CO, 80020

Project: PDC - J&L Farms 14,24-29 Tank Battery

Project Number: [none]
Project Manager: Karen Olson

Reported:
06/25/24 08:43

BH07R2
2406173-07 (Water)

Summit Scientific

Volatile Organic Compounds by EPA Method 8260B

Date Sampled: **06/12/24 11:15**

Analyte	Result	Reporting	Units	Dilution	Batch	Prepared	Analyzed	Method	Notes
		Limit							
Benzene	ND	1.0	ug/l	1	BHF0370	06/13/24	06/14/24	EPA 8260B	
Toluene	ND	1.0	"	"	"	"	"	"	
Ethylbenzene	ND	1.0	"	"	"	"	"	"	
Xylenes (total)	ND	2.0	"	"	"	"	"	"	
Naphthalene	ND	1.0	"	"	"	"	"	"	
1,2,4-Trimethylbenzene	ND	1.0	"	"	"	"	"	"	
1,3,5-Trimethylbenzene	ND	1.0	"	"	"	"	"	"	

Date Sampled: **06/12/24 11:15**

Analyte	Result	Reporting	Units	Dilution	Batch	Prepared	Analyzed	Method	Notes
		Limit							
Surrogate: 1,2-Dichloroethane-d4	10.9	81.7 %	23-173		"	"	"	"	
Surrogate: Toluene-d8	12.6	94.3 %	20-170		"	"	"	"	
Surrogate: 4-Bromofluorobenzene	12.3	92.2 %	21-167		"	"	"	"	

Summit Scientific

The results in this report apply to the samples analyzed in accordance with the chain of custody document. This analytical report must be reproduced in its entirety.



Tasman Geosciences
6855 W. 119th Ave.
Broomfield CO, 80020

Project: PDC - J&L Farms 14,24-29 Tank Battery

Project Number: [none]
Project Manager: Karen Olson

Reported:
06/25/24 08:43

BH09
2406173-08 (Water)

Summit Scientific

Volatile Organic Compounds by EPA Method 8260B

Date Sampled: **06/12/24 11:16**

Analyte	Result	Reporting		Units	Dilution	Batch	Prepared	Analyzed	Method	Notes
		Limit								
Benzene	2.1	1.0		ug/l	1	BHF0370	06/13/24	06/14/24	EPA 8260B	
Toluene	ND	1.0		"	"	"	"	"	"	
Ethylbenzene	45	1.0		"	"	"	"	"	"	
Xylenes (total)	2.3	2.0		"	"	"	"	"	"	
Naphthalene	ND	1.0		"	"	"	"	"	"	
1,2,4-Trimethylbenzene	4.2	1.0		"	"	"	"	"	"	
1,3,5-Trimethylbenzene	ND	1.0		"	"	"	"	"	"	

Date Sampled: **06/12/24 11:16**

Analyte	Result	Reporting		Units	Dilution	Batch	Prepared	Analyzed	Method	Notes
		Limit								
Surrogate: 1,2-Dichloroethane-d4	11.3	84.5 %		23-173		"	"	"	"	
Surrogate: Toluene-d8	13.1	98.5 %		20-170		"	"	"	"	
Surrogate: 4-Bromofluorobenzene	13.3	99.6 %		21-167		"	"	"	"	

Summit Scientific

The results in this report apply to the samples analyzed in accordance with the chain of custody document. This analytical report must be reproduced in its entirety.



Tasman Geosciences
6855 W. 119th Ave.
Broomfield CO, 80020

Project: PDC - J&L Farms 14,24-29 Tank Battery

Project Number: [none]
Project Manager: Karen Olson

Reported:
06/25/24 08:43

BH10
2406173-09 (Water)

Summit Scientific

Volatile Organic Compounds by EPA Method 8260B

Date Sampled: **06/12/24 11:26**

Analyte	Result	Reporting	Units	Dilution	Batch	Prepared	Analyzed	Method	Notes
		Limit							
Benzene	ND	1.0	ug/l	1	BHF0370	06/13/24	06/14/24	EPA 8260B	
Toluene	ND	1.0	"	"	"	"	"	"	
Ethylbenzene	ND	1.0	"	"	"	"	"	"	
Xylenes (total)	ND	2.0	"	"	"	"	"	"	
Naphthalene	ND	1.0	"	"	"	"	"	"	
1,2,4-Trimethylbenzene	ND	1.0	"	"	"	"	"	"	
1,3,5-Trimethylbenzene	ND	1.0	"	"	"	"	"	"	

Date Sampled: **06/12/24 11:26**

Analyte	Result	Reporting	Units	Dilution	Batch	Prepared	Analyzed	Method	Notes
		Limit							
Surrogate: 1,2-Dichloroethane-d4	11.2	84.3 %	23-173		"	"	"	"	
Surrogate: Toluene-d8	13.0	97.6 %	20-170		"	"	"	"	
Surrogate: 4-Bromofluorobenzene	12.5	93.9 %	21-167		"	"	"	"	

Summit Scientific

The results in this report apply to the samples analyzed in accordance with the chain of custody document. This analytical report must be reproduced in its entirety.



Tasman Geosciences
6855 W. 119th Ave.
Broomfield CO, 80020

Project: PDC - J&L Farms 14,24-29 Tank Battery

Project Number: [none]
Project Manager: Karen Olson

Reported:
06/25/24 08:43

BH11
2406173-10 (Water)

Summit Scientific

Volatile Organic Compounds by EPA Method 8260B

Date Sampled: **06/12/24 11:31**

Analyte	Result	Reporting	Units	Dilution	Batch	Prepared	Analyzed	Method	Notes
		Limit							
Benzene	ND	1.0	ug/l	1	BHF0370	06/13/24	06/14/24	EPA 8260B	
Toluene	ND	1.0	"	"	"	"	"	"	
Ethylbenzene	ND	1.0	"	"	"	"	"	"	
Xylenes (total)	ND	2.0	"	"	"	"	"	"	
Naphthalene	ND	1.0	"	"	"	"	"	"	
1,2,4-Trimethylbenzene	ND	1.0	"	"	"	"	"	"	
1,3,5-Trimethylbenzene	ND	1.0	"	"	"	"	"	"	

Date Sampled: **06/12/24 11:31**

Analyte	Result	Reporting	Units	Dilution	Batch	Prepared	Analyzed	Method	Notes
		Limit							
Surrogate: 1,2-Dichloroethane-d4	10.4	77.6 %	23-173		"	"	"	"	
Surrogate: Toluene-d8	12.7	95.3 %	20-170		"	"	"	"	
Surrogate: 4-Bromofluorobenzene	12.7	95.0 %	21-167		"	"	"	"	

Summit Scientific

The results in this report apply to the samples analyzed in accordance with the chain of custody document. This analytical report must be reproduced in its entirety.



Tasman Geosciences
6855 W. 119th Ave.
Broomfield CO, 80020

Project: PDC - J&L Farms 14,24-29 Tank Battery

Project Number: [none]
Project Manager: Karen Olson

Reported:
06/25/24 08:43

BH12
2406173-11 (Water)

Summit Scientific

Volatile Organic Compounds by EPA Method 8260B

Date Sampled: **06/12/24 11:35**

Analyte	Result	Reporting	Units	Dilution	Batch	Prepared	Analyzed	Method	Notes
		Limit							
Benzene	ND	1.0	ug/l	1	BHF0370	06/13/24	06/14/24	EPA 8260B	
Toluene	ND	1.0	"	"	"	"	"	"	
Ethylbenzene	ND	1.0	"	"	"	"	"	"	
Xylenes (total)	ND	2.0	"	"	"	"	"	"	
Naphthalene	ND	1.0	"	"	"	"	"	"	
1,2,4-Trimethylbenzene	ND	1.0	"	"	"	"	"	"	
1,3,5-Trimethylbenzene	ND	1.0	"	"	"	"	"	"	

Date Sampled: **06/12/24 11:35**

Analyte	Result	Reporting	Units	Dilution	Batch	Prepared	Analyzed	Method	Notes
		Limit							
Surrogate: 1,2-Dichloroethane-d4	11.2	84.4 %	23-173		"	"	"	"	
Surrogate: Toluene-d8	13.2	99.2 %	20-170		"	"	"	"	
Surrogate: 4-Bromofluorobenzene	12.5	94.1 %	21-167		"	"	"	"	

Summit Scientific

The results in this report apply to the samples analyzed in accordance with the chain of custody document. This analytical report must be reproduced in its entirety.



Tasman Geosciences
6855 W. 119th Ave.
Broomfield CO, 80020

Project: PDC - J&L Farms 14,24-29 Tank Battery
Project Number: [none]
Project Manager: Karen Olson

Reported:
06/25/24 08:43

BH13
2406173-12 (Water)

Summit Scientific

Volatile Organic Compounds by EPA Method 8260B

Date Sampled: **06/12/24 11:45**

Analyte	Result	Reporting	Units	Dilution	Batch	Prepared	Analyzed	Method	Notes
		Limit							
Benzene	ND	1.0	ug/l	1	BHF0370	06/13/24	06/14/24	EPA 8260B	
Toluene	ND	1.0	"	"	"	"	"	"	
Ethylbenzene	ND	1.0	"	"	"	"	"	"	
Xylenes (total)	ND	2.0	"	"	"	"	"	"	
Naphthalene	ND	1.0	"	"	"	"	"	"	
1,2,4-Trimethylbenzene	ND	1.0	"	"	"	"	"	"	
1,3,5-Trimethylbenzene	ND	1.0	"	"	"	"	"	"	

Date Sampled: **06/12/24 11:45**

Analyte	Result	Reporting	Units	Dilution	Batch	Prepared	Analyzed	Method	Notes
		Limit							
Surrogate: 1,2-Dichloroethane-d4	11.1	83.5 %	23-173		"	"	"	"	
Surrogate: Toluene-d8	13.2	98.9 %	20-170		"	"	"	"	
Surrogate: 4-Bromofluorobenzene	12.5	93.8 %	21-167		"	"	"	"	

Summit Scientific

The results in this report apply to the samples analyzed in accordance with the chain of custody document. This analytical report must be reproduced in its entirety.



Tasman Geosciences
6855 W. 119th Ave.
Broomfield CO, 80020

Project: PDC - J&L Farms 14,24-29 Tank Battery

Project Number: [none]
Project Manager: Karen Olson

Reported:
06/25/24 08:43

BH14
2406173-13 (Water)

Summit Scientific

Volatile Organic Compounds by EPA Method 8260B

Date Sampled: **06/12/24 11:47**

Analyte	Result	Reporting	Units	Dilution	Batch	Prepared	Analyzed	Method	Notes
		Limit							
Benzene	ND	1.0	ug/l	1	BHF0370	06/13/24	06/14/24	EPA 8260B	
Toluene	ND	1.0	"	"	"	"	"	"	
Ethylbenzene	ND	1.0	"	"	"	"	"	"	
Xylenes (total)	ND	2.0	"	"	"	"	"	"	
Naphthalene	ND	1.0	"	"	"	"	"	"	
1,2,4-Trimethylbenzene	ND	1.0	"	"	"	"	"	"	
1,3,5-Trimethylbenzene	ND	1.0	"	"	"	"	"	"	

Date Sampled: **06/12/24 11:47**

Analyte	Result	Reporting	Units	Dilution	Batch	Prepared	Analyzed	Method	Notes
		Limit							
Surrogate: 1,2-Dichloroethane-d4	11.4	85.4 %	23-173		"	"	"	"	
Surrogate: Toluene-d8	13.0	97.7 %	20-170		"	"	"	"	
Surrogate: 4-Bromofluorobenzene	12.3	92.3 %	21-167		"	"	"	"	

Summit Scientific

The results in this report apply to the samples analyzed in accordance with the chain of custody document. This analytical report must be reproduced in its entirety.



Tasman Geosciences
6855 W. 119th Ave.
Broomfield CO, 80020

Project: PDC - J&L Farms 14,24-29 Tank Battery

Project Number: [none]
Project Manager: Karen Olson

Reported:
06/25/24 08:43

BH15
2406173-14 (Water)

Summit Scientific

Volatile Organic Compounds by EPA Method 8260B

Date Sampled: **06/12/24 12:02**

Analyte	Result	Reporting	Units	Dilution	Batch	Prepared	Analyzed	Method	Notes
		Limit							
Benzene	ND	1.0	ug/l	1	BHF0370	06/13/24	06/14/24	EPA 8260B	
Toluene	ND	1.0	"	"	"	"	"	"	
Ethylbenzene	ND	1.0	"	"	"	"	"	"	
Xylenes (total)	ND	2.0	"	"	"	"	"	"	
Naphthalene	ND	1.0	"	"	"	"	"	"	
1,2,4-Trimethylbenzene	ND	1.0	"	"	"	"	"	"	
1,3,5-Trimethylbenzene	ND	1.0	"	"	"	"	"	"	

Date Sampled: **06/12/24 12:02**

Analyte	Result	Reporting	Units	Dilution	Batch	Prepared	Analyzed	Method	Notes
		Limit							
Surrogate: 1,2-Dichloroethane-d4	10.7	80.3 %	23-173		"	"	"	"	
Surrogate: Toluene-d8	12.8	96.0 %	20-170		"	"	"	"	
Surrogate: 4-Bromofluorobenzene	12.4	92.6 %	21-167		"	"	"	"	

Summit Scientific

The results in this report apply to the samples analyzed in accordance with the chain of custody document. This analytical report must be reproduced in its entirety.



Tasman Geosciences
6855 W. 119th Ave.
Broomfield CO, 80020

Project: PDC - J&L Farms 14,24-29 Tank Battery

Project Number: [none]
Project Manager: Karen Olson

Reported:
06/25/24 08:43

Volatile Organic Compounds by EPA Method 8260B - Quality Control

Summit Scientific

Analyte	Reporting			Spike	Source		%REC		RPD	
	Result	Limit	Units	Level	Result	%REC	Limits	RPD	Limit	Notes

Batch BHF0370 - EPA 5030 Water MS

Blank (BHF0370-BLK1)

Prepared: 06/13/24 Analyzed: 06/14/24

Benzene	ND	1.0	ug/l							
Toluene	ND	1.0	"							
Ethylbenzene	ND	1.0	"							
Xylenes (total)	ND	2.0	"							
Naphthalene	ND	1.0	"							
1,2,4-Trimethylbenzene	ND	1.0	"							
1,3,5-Trimethylbenzene	ND	1.0	"							
Surrogate: 1,2-Dichloroethane-d4	11.2		"	13.3		84.2	23-173			
Surrogate: Toluene-d8	12.7		"	13.3		95.5	20-170			
Surrogate: 4-Bromofluorobenzene	12.6		"	13.3		94.7	21-167			

LCS (BHF0370-BS1)

Prepared: 06/13/24 Analyzed: 06/14/24

Benzene	38.6	1.0	ug/l	33.3		116	51-132			
Toluene	37.6	1.0	"	33.3		113	51-138			
Ethylbenzene	39.2	1.0	"	33.3		118	58-146			
m,p-Xylene	79.8	2.0	"	66.7		120	57-144			
o-Xylene	38.3	1.0	"	33.3		115	53-146			
Naphthalene	36.6	1.0	"	33.3		110	70-130			
1,2,4-Trimethylbenzene	41.1	1.0	"	33.3		123	70-130			
1,3,5-Trimethylbenzene	39.1	1.0	"	33.3		117	70-130			
Surrogate: 1,2-Dichloroethane-d4	11.1		"	13.3		83.4	23-173			
Surrogate: Toluene-d8	12.9		"	13.3		96.8	20-170			
Surrogate: 4-Bromofluorobenzene	13.0		"	13.3		97.5	21-167			

Matrix Spike (BHF0370-MS1)

Source: 2406168-03

Prepared: 06/13/24 Analyzed: 06/14/24

Benzene	37.5	1.0	ug/l	33.3	ND	112	34-141			
Toluene	36.4	1.0	"	33.3	ND	109	27-151			
Ethylbenzene	37.4	1.0	"	33.3	ND	112	29-160			
m,p-Xylene	79.3	2.0	"	66.7	ND	119	20-166			
o-Xylene	37.1	1.0	"	33.3	ND	111	33-159			
Naphthalene	34.7	1.0	"	33.3	ND	104	70-130			
1,2,4-Trimethylbenzene	38.5	1.0	"	33.3	ND	116	70-130			
1,3,5-Trimethylbenzene	36.4	1.0	"	33.3	ND	109	70-130			
Surrogate: 1,2-Dichloroethane-d4	11.8		"	13.3		88.8	23-173			
Surrogate: Toluene-d8	13.0		"	13.3		97.7	20-170			
Surrogate: 4-Bromofluorobenzene	12.9		"	13.3		97.0	21-167			

Summit Scientific

The results in this report apply to the samples analyzed in accordance with the chain of custody document. This analytical report must be reproduced in its entirety.



Tasman Geosciences
6855 W. 119th Ave.
Broomfield CO, 80020

Project: PDC - J&L Farms 14,24-29 Tank Battery

Project Number: [none]
Project Manager: Karen Olson

Reported:
06/25/24 08:43

Volatile Organic Compounds by EPA Method 8260B - Quality Control
Summit Scientific

Analyte	Reporting			Spike	Source		%REC		RPD	
	Result	Limit	Units	Level	Result	%REC	Limits	RPD	Limit	Notes

Batch BHF0370 - EPA 5030 Water MS

Matrix Spike Dup (BHF0370-MSD1)

Source: 2406168-03

Prepared: 06/13/24 Analyzed: 06/14/24

Benzene	37.5	1.0	ug/l	33.3	ND	113	34-141	0.107	30	
Toluene	36.8	1.0	"	33.3	ND	110	27-151	1.04	30	
Ethylbenzene	38.0	1.0	"	33.3	ND	114	29-160	1.43	30	
m,p-Xylene	80.4	2.0	"	66.7	ND	121	20-166	1.33	30	
o-Xylene	37.5	1.0	"	33.3	ND	112	33-159	1.10	30	
Naphthalene	34.8	1.0	"	33.3	ND	105	70-130	0.489	30	
1,2,4-Trimethylbenzene	39.1	1.0	"	33.3	ND	117	70-130	1.57	30	
1,3,5-Trimethylbenzene	37.0	1.0	"	33.3	ND	111	70-130	1.52	30	
Surrogate: 1,2-Dichloroethane-d4	11.9		"	13.3		89.0	23-173			
Surrogate: Toluene-d8	12.8		"	13.3		96.4	20-170			
Surrogate: 4-Bromofluorobenzene	13.2		"	13.3		98.9	21-167			

Summit Scientific

The results in this report apply to the samples analyzed in accordance with the chain of custody document. This analytical report must be reproduced in its entirety.



Tasman Geosciences
6855 W. 119th Ave.
Broomfield CO, 80020

Project: PDC - J&L Farms 14,24-29 Tank Battery

Project Number: [none]
Project Manager: Karen Olson

Reported:
06/25/24 08:43

Notes and Definitions

DET	Analyte DETECTED
ND	Analyte NOT DETECTED at or above the reporting limit
NR	Not Reported
dry	Sample results reported on a dry weight basis
RPD	Relative Percent Difference