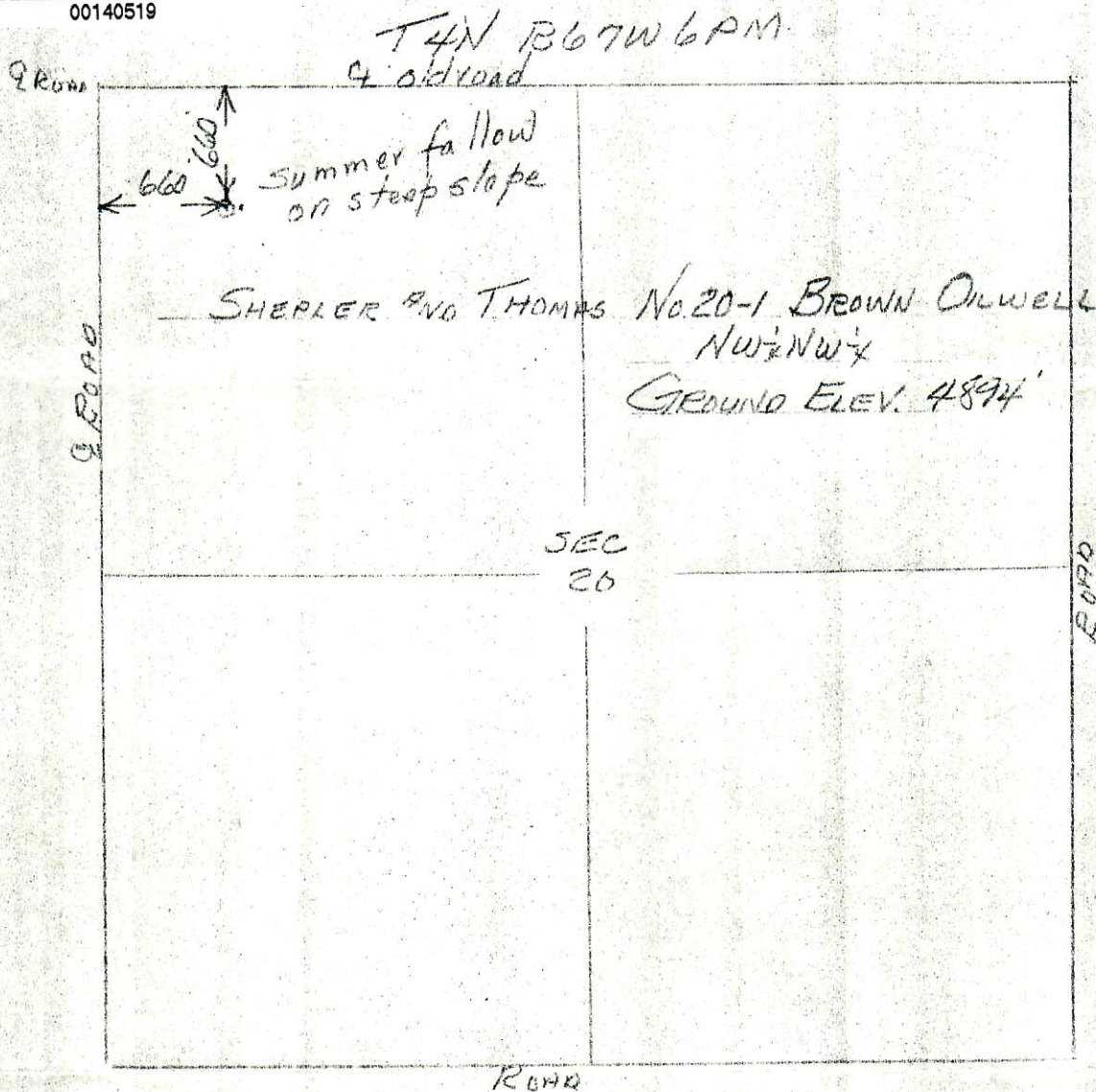


CERTIFICATE OF SURVEY
- for
Shepler and Thomas
Weld County, Colorado

RECEIVED
DEC 13 1984
COLO. OIL & GAS CONS. COMM.



00140519



I hereby certify that the above plat is an accurate representation of a correct survey showing the location of Shepler and Thomas-No. 20-1 Brown Oilwell in NW $\frac{1}{4}$ NW $\frac{1}{4}$ Sec. 20 T4N R67W 6PM. The elevation of the ground at the stake is 4894 feet above sea level from U.S.G.S. Bench Mark.

Fort Morgan, Colorado
August 4, 1984

Leslie J. [Signature]
Registered Professional Engineer
State of Colorado