

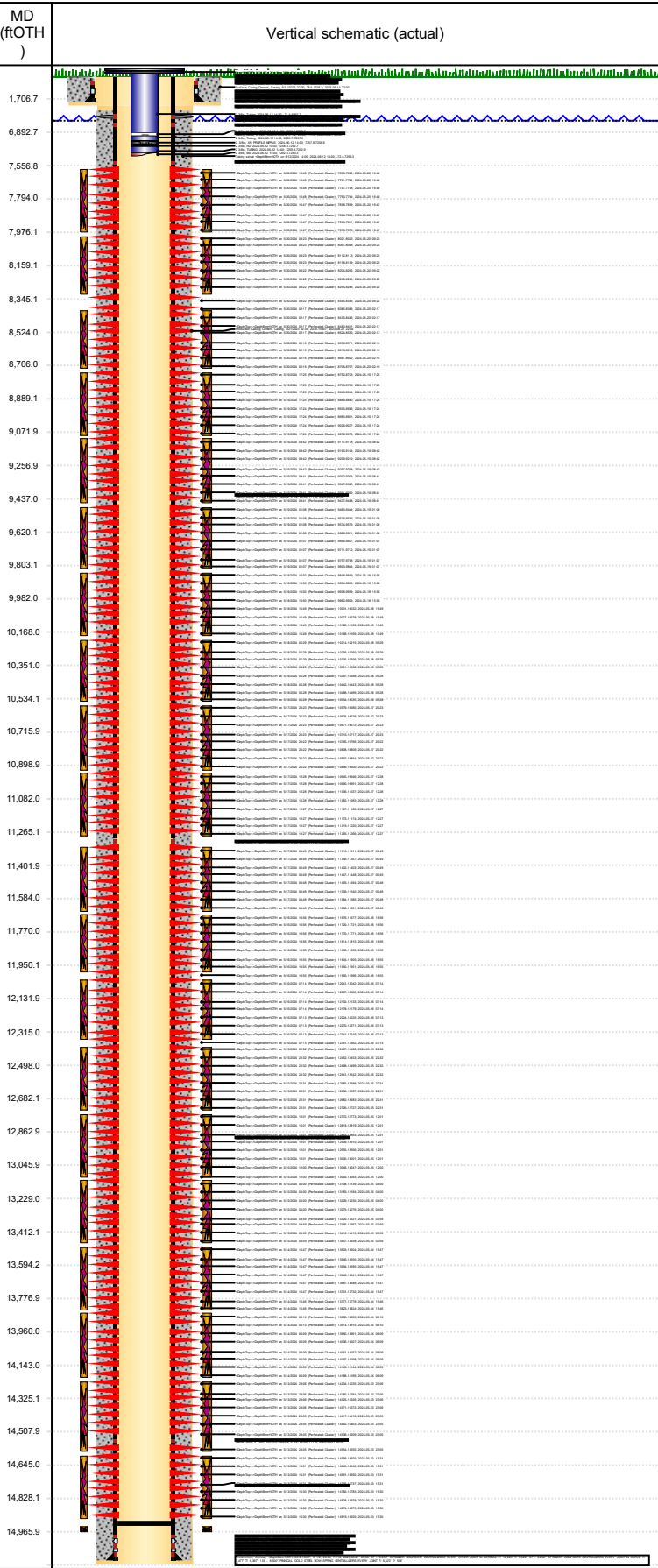


Wellbore Schematic Input Report

Well Name: Hen 05N

Original Hole [Land]

Vertical schematic (actual)



Well Header						
Surface UWI 0512351799		Asset Team 10004359		Production Tree Location Land		
Original RKB Elevation (ft) 4,807.50		Original KB to Ground (ft) 28.50		Original Spud Date 8/19/2023		Abandon Date
Range 64W			Well Sub-Status PR		High Press... N	
Directions To Well				Latitude (°) 40° 19' 41.7" N		Longitude (°) 104° 34' 20.424" W
Comment						
Congressional Location						
Quarter 3 SW	Quarter 4 NE	Section	Township	Twnshp N/S Dir	Range	Range E/W Dir
Rig Operator						
Rig/Unit Supervisor Jason Morris						
Daily Cost Summary						
Sum of Field Est (Cost) 0						
Wellbore Plug Back Total Depths						
Date	PBTD (ftOTH)	Method		Com		
5/30/2024		Clean Out		TD BASED OFF CT MEASUREMENT		
Wellbore Sections						
Section Des		Hole Size (in)	Top Depth (ftOTH)	Btm Depth (ftOTH)		
Surface		13 1/2				
Surface		13 1/2				
Production		8 1/2				
Zone Statuses						
Zone Name		Status Date		Status		
Casing Strings						
Surface, Actual, <DepthBtm>ftOTH						
Casing Description Surface	Run Date 6/14/2023	OD (in) 9 5/8	Wt/Len (L...) 36.00	Grade J-55	Top Depth...	Set Depth...
Production, Actual, <DepthBtm>ftOTH						
Casing Description Production	Run Date 8/21/2023	OD (in) 5 1/2	Wt/Len (L...) 20.00	Grade P-110	Top Depth...	Set Depth...
Cement						
Des		Start Date	Top (ftOTH)	Btm (ftOTH)		
Surface		6/14/2023				
Production Casing Cement		8/21/2023				
Proposed Cement						
Des		Top (ftOTH)	Btm (ftOTH)			
Tubing Strings						
Tubing Description Tubing	Run Date 6/12/2024	String... 2 3/8	ID (in) 1.991	Wt (lb/ft) 4.70	Grade L-80	Len (ft) 7,365.72
Tubing Components						
Item Des	OD (in)	Wt (lb/ft)	Grade	Jts	Len (ft)	Btm (ftOTH) Btm (TVD) (ftOTH)
HANGER	7	4.70	N-80	1	1.00	
Tubing	2 3/8	4.70	L-80	210	6,964.13	
X Nipple	2 3/8	4.70	N-80	1	0.97	
Tubing	2 3/8	4.70	N-80	11	364.17	
XN PROFILE NIPPLE	2 3/8	4.70	N-80	1	1.06	
RD	2 3/8	4.70	N-80	1	0.80	
TUBING	2 3/8	4.70	L-80	1	33.15	
MS	2 3/8	4.70	J-55	1	0.44	
Other In Hole						
Run Date	Des		Make	OD (in)	Top (ftOTH)	Btm (ftOTH)
Proposed Other In Hole						
Des		Make	OD (in)	Top (ftOTH)	Btm (ftOTH)	



Wellbore Schematic Input Report

Well Name: Hen 05N

MD (fROTH)	Original Hole [Land] Vertical schematic (actual)	Perforation Data				
		Linked Zone	Sum of Entered Shot Total	Top (fROTH)	Btm (fROTH)	Date
1,706.7		Niobrara B, Original Hole	4			5/18/2024
		Niobrara B, Original Hole	4			5/18/2024
6,892.7		Niobrara B, Original Hole	4			5/18/2024
		Niobrara B, Original Hole	4			5/18/2024
7,556.8		Niobrara B, Original Hole	5			5/18/2024
		Niobrara B, Original Hole	5			5/18/2024
7,794.0		Niobrara B, Original Hole	5			5/18/2024
		Niobrara B, Original Hole	5			5/18/2024
7,976.1		Niobrara B, Original Hole	5			5/18/2024
		Niobrara B, Original Hole	5			5/18/2024
8,159.1		Niobrara B, Original Hole	4			5/17/2024
		Niobrara B, Original Hole	4			5/17/2024
8,345.1		Niobrara B, Original Hole	4			5/17/2024
		Niobrara B, Original Hole	4			5/17/2024
8,524.0		Niobrara B, Original Hole	4			5/17/2024
		Niobrara B, Original Hole	4			5/17/2024
8,706.0		Niobrara B, Original Hole	5			5/17/2024
		Niobrara B, Original Hole	5			5/17/2024
8,889.1		Niobrara B, Original Hole	5			5/17/2024
		Niobrara B, Original Hole	5			5/17/2024
9,071.9		Niobrara B, Original Hole	5			5/17/2024
		Niobrara B, Original Hole	5			5/17/2024
9,256.9		Niobrara B, Original Hole	4			5/17/2024
		Niobrara B, Original Hole	4			5/17/2024
9,437.0		Niobrara B, Original Hole	4			5/17/2024
		Niobrara B, Original Hole	4			5/17/2024
9,620.1		Niobrara B, Original Hole	4			5/17/2024
		Niobrara B, Original Hole	4			5/17/2024
9,803.1		Niobrara B, Original Hole	5			5/17/2024
		Niobrara B, Original Hole	5			5/17/2024
9,982.0		Niobrara B, Original Hole	5			5/17/2024
		Niobrara B, Original Hole	5			5/17/2024
10,168.0		Niobrara B, Original Hole	5			5/17/2024
		Niobrara B, Original Hole	5			5/17/2024
10,351.0		Niobrara B, Original Hole	4			5/17/2024
		Niobrara B, Original Hole	4			5/17/2024
10,534.1		Niobrara B, Original Hole	4			5/17/2024
		Niobrara B, Original Hole	4			5/17/2024
10,715.9		Niobrara B, Original Hole	4			5/17/2024
		Niobrara B, Original Hole	4			5/17/2024
10,898.9		Niobrara B, Original Hole	5			5/17/2024
		Niobrara B, Original Hole	5			5/17/2024
11,082.0		Niobrara B, Original Hole	5			5/17/2024
		Niobrara B, Original Hole	5			5/17/2024
11,265.1		Niobrara B, Original Hole	5			5/17/2024
		Niobrara B, Original Hole	5			5/17/2024
11,401.9		Niobrara B, Original Hole	4			5/16/2024
		Niobrara B, Original Hole	4			5/16/2024
11,584.0		Niobrara B, Original Hole	4			5/16/2024
		Niobrara B, Original Hole	4			5/16/2024
11,770.0		Niobrara B, Original Hole	4			5/16/2024
		Niobrara B, Original Hole	4			5/16/2024
11,950.1		Niobrara B, Original Hole	5			5/16/2024
		Niobrara B, Original Hole	5			5/16/2024
12,131.9		Niobrara B, Original Hole	5			5/16/2024
		Niobrara B, Original Hole	5			5/16/2024
12,315.0		Niobrara B, Original Hole	5			5/16/2024
		Niobrara B, Original Hole	5			5/16/2024
12,498.0		Niobrara B, Original Hole	4			5/16/2024
		Niobrara B, Original Hole	4			5/16/2024
12,682.1		Niobrara B, Original Hole	4			5/16/2024
		Niobrara B, Original Hole	4			5/16/2024
12,862.9		Niobrara B, Original Hole	4			5/16/2024
		Niobrara B, Original Hole	4			5/16/2024
13,045.9		Niobrara B, Original Hole	5			5/16/2024
		Niobrara B, Original Hole	5			5/16/2024
13,229.0		Niobrara B, Original Hole	5			5/16/2024
		Niobrara B, Original Hole	5			5/16/2024
13,412.1		Niobrara B, Original Hole	5			5/16/2024
		Niobrara B, Original Hole	5			5/16/2024
13,594.2		Niobrara B, Original Hole	4			5/15/2024
		Niobrara B, Original Hole	4			5/15/2024
13,776.9		Niobrara B, Original Hole	4			5/15/2024
		Niobrara B, Original Hole	4			5/15/2024
13,960.0		Niobrara B, Original Hole	4			5/15/2024
		Niobrara B, Original Hole	4			5/15/2024
14,143.0		Niobrara B, Original Hole	5			5/15/2024
		Niobrara B, Original Hole	5			5/15/2024
14,325.1		Niobrara B, Original Hole	5			5/15/2024
		Niobrara B, Original Hole	5			5/15/2024
14,507.9		Niobrara B, Original Hole	5			5/15/2024
		Niobrara B, Original Hole	5			5/15/2024
14,645.0		Niobrara B, Original Hole	4			5/15/2024
		Niobrara B, Original Hole	4			5/15/2024
14,828.1		Niobrara B, Original Hole	4			5/15/2024
		Niobrara B, Original Hole	4			5/15/2024
14,965.9		Niobrara B, Original Hole	4			5/15/2024
		Niobrara B, Original Hole	4			5/15/2024



Wellbore Schematic Input Report

Well Name: Hen 05N

Original Hole [Land]		Perforation Data				
MD (fROTH)	Vertical schematic (actual)	Linked Zone	Sum of Entered Shot Total	Top (fROTH)	Btm (fROTH)	Date
6.892.7		Niobrara B, Original Hole	5			5/15/2024
7.556.8		Niobrara B, Original Hole	5			5/15/2024
7.794.0		Niobrara B, Original Hole	4			5/15/2024
7.976.1		Niobrara B, Original Hole	4			5/15/2024
8.159.1		Niobrara B, Original Hole	4			5/15/2024
8.345.1		Niobrara B, Original Hole	5			5/15/2024
8.524.0		Niobrara B, Original Hole	5			5/15/2024
8.706.0		Niobrara B, Original Hole	5			5/15/2024
8.889.1		Niobrara B, Original Hole	4			5/14/2024
9.071.9		Niobrara B, Original Hole	4			5/14/2024
9.256.9		Niobrara B, Original Hole	4			5/14/2024
9.437.0		Niobrara B, Original Hole	5			5/14/2024
9.620.1		Niobrara B, Original Hole	5			5/14/2024
9.803.1		Niobrara B, Original Hole	5			5/14/2024
9.982.0		Niobrara B, Original Hole	4			5/14/2024
10.168.0		Niobrara B, Original Hole	4			5/14/2024
10.351.0		Niobrara B, Original Hole	4			5/14/2024
10.534.1		Niobrara B, Original Hole	5			5/14/2024
10.715.9		Niobrara B, Original Hole	5			5/14/2024
10.898.9		Niobrara B, Original Hole	5			5/14/2024
11.082.0		Niobrara B, Original Hole	4			5/13/2024
11.265.1		Niobrara B, Original Hole	4			5/13/2024
11.401.9		Niobrara B, Original Hole	4			5/13/2024
11.584.0		Niobrara B, Original Hole	5			5/13/2024
11.770.0		Niobrara B, Original Hole	5			5/13/2024
11.950.1		Niobrara B, Original Hole	5			5/13/2024
12.131.9		Niobrara B, Original Hole	4			5/13/2024
12.315.0		Niobrara B, Original Hole	4			5/13/2024
12.498.0		Niobrara B, Original Hole	4			5/13/2024
12.682.1		Niobrara B, Original Hole	5			5/13/2024
12.862.9		Niobrara B, Original Hole	5			5/13/2024
13.045.9		Niobrara B, Original Hole	5			5/13/2024
13.229.0		Niobrara B, Original Hole	5			5/13/2024
13.412.1		Niobrara B, Original Hole	5			5/13/2024
13.594.2		Niobrara B, Original Hole	5			5/13/2024
13.776.9		Niobrara B, Original Hole	5			5/13/2024
13.960.0		Niobrara B, Original Hole	5			5/13/2024
14.143.0		Niobrara B, Original Hole	5			5/13/2024
14.325.1		Niobrara B, Original Hole	5			5/13/2024
14.507.9		Niobrara B, Original Hole	5			5/13/2024
14.645.0		Niobrara B, Original Hole	5			5/13/2024
14.828.1		Niobrara B, Original Hole	5			5/13/2024
14.965.9		Niobrara B, Original Hole	5			5/13/2024
Total			720			
Job Supply Amounts						
Supply Item Des		Job Supply Type	Uni...	Job Category	Total...	Total...
Daily Cost Breakdown by Category						
Field Est (Cost)		Description	Note			