

February 22, 2024 :



Photo taken after condensate spray was released due to overpressurization, facing east.



Photo taken facing the earth after condensate spray was released due to overpressurization.



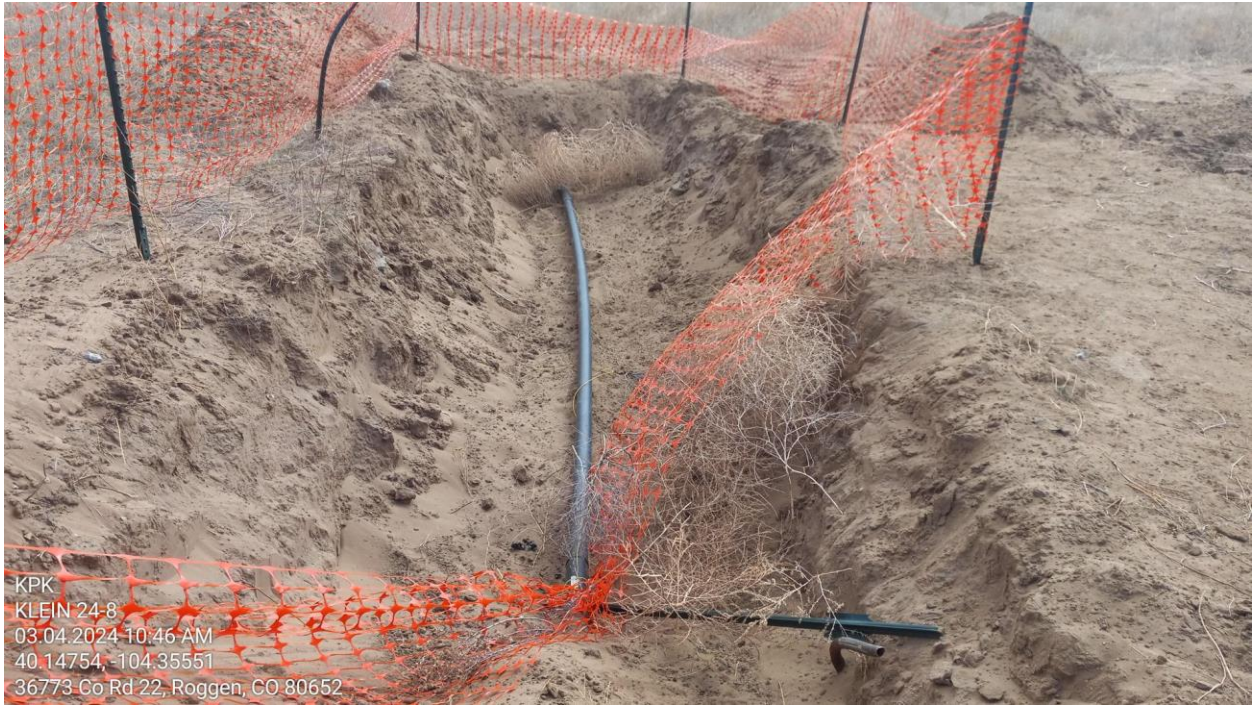
Photo taken facing southeast showing the scrape area after condensate mist was released and soil removed.



Photo depicts fencing around the location where the condensate mist originated, facing east.



Photo depicts the scrape area after additional scraping was performed. Facing west.



KPK
KLEIN 24 8
03.04.2024 10:46 AM
40 14754, -104.35551
36773 Co Rd 22, Roggen, CO 80652

Photo shows the excavation extent after the flowline was exposed and repaired. Facing east.