



Wellbore Schematic Input Report

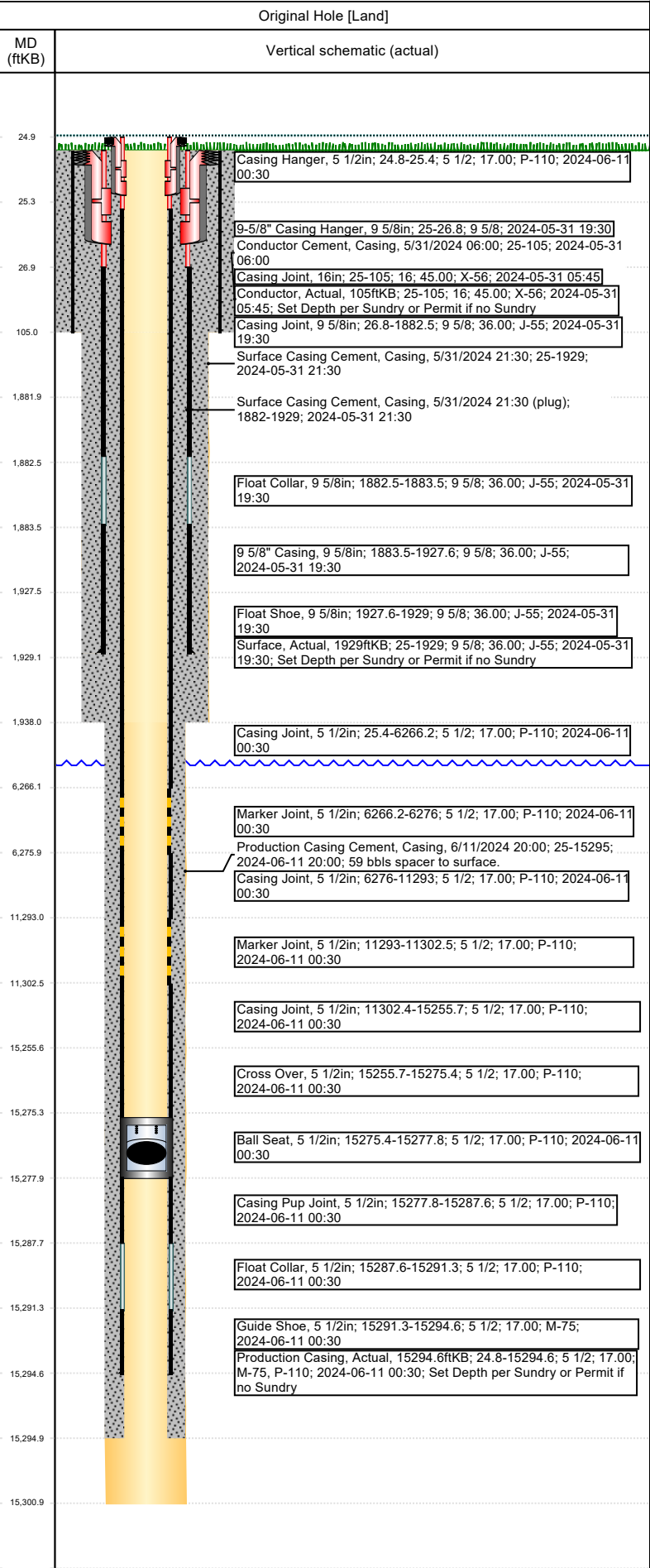
Well Name: BEEBE DRAW FEDERAL H15-764

Original Hole [Land]		Well Header							
MD (ftKB)	Vertical schematic (actual)	Surface UWI 0512348847			Asset Team		Production Tree Location Land		
		Original RKB Elevation (ft) 4,829.00		Original KB to Ground (ft) 25.00		Original Spud Date 5/31/2024		Abandon Date	
		Range			Well Sub-Status WO			High Pressure N	
		Directions To Well CR 38 & CR 39, east 1.5 miles, south onto CR 41 1/2 1.0 mile, east on Beebe Draw Parkway 0.75 mile, south into				Latitude (°) 40.247724		Longitude (°) -104.652509	
		Comment Log Exception for H03-14 PAD: One of the first wells drilled on the pad will be logged with Cased hole Pulsed Neutron Log with Gamma Ray Log from kick-off point into the surface casing. All wells on the pad will have a cement bond log with gamma-ray run on production casing (or on intermediate casing if production liner is run) into the surface casing. The horizontal portion of every well will be logged with a measured while-drilling gamma-ray log. This is a Federal well, the name was updated to include Federal; BHL was changed; Federal permit reflects these changes. Approved Federal Sundry: Added True 41's BOP Schematic; True 41's Choke; Schematic; True 41's Flow Diagram. See Permits and Sundry for details.							
Congressional Location									
Quarter 3 SE		Quarter 4 SW		Section 3	Township 3	Township N/S Dir N	Range 65	Range E/W Dir W	
Rig Operator									
Rig/Unit Supervisor									
Daily Cost Summary									
Sum of Field Est (Cost) 0									
Wellbore Plug Back Total Depths									
Date		PBTD (ftKB)		Method		Com			
6/11/2024		15,288		CSG TALLY					
Wellbore Sections									
Section Des			Hole Size (in)		Top Depth (ftKB)		Btm Depth (ftKB)		
Conductor			16		25.0		105.0		
Surface			13 1/2		105.0		1,938.0		
PRODUCTION			8 1/2		1,938.0		15,301.0		
Zone Statuses									
Zone Name			Status Date			Status			
Casing Strings									
Conductor, Actual, 105ftKB									
Casing Description Conductor			Run Date 5/31/2024	OD (in) 16	Wt/Len (lb/ft) 45.00	Grade X-56	Top Depth (M) 25	Set Depth (M) 105	
Surface, Actual, 1929ftKB									
Casing Description Surface			Run Date 5/31/2024	OD (in) 9 5/8	Wt/Len (lb/ft) 36.00	Grade J-55	Top Depth (M) 25	Set Depth (M) 1929	
Production Casing, Actual, 15294.6ftKB									
Casing Description Production Casing			Run Date 6/11/2024	OD (in) 5 1/2	Wt/Len (lb/ft) 17.00	Grade P-110	Top Depth (M) 24.8	Set Depth (M) 15294.6	
Cement									
Des			Start Date		Top (ftKB)		Btm (ftKB)		
Conductor Cement			5/31/2024		25.0		105.0		
Surface Casing Cement			5/31/2024		25.0		1,929.0		
Production Casing Cement			6/11/2024		25.0		15,295.0		
Proposed Cement									
Des					Top (ftKB)		Btm (ftKB)		
Tubing Strings									
Tubing Description			Run Date	String Make	ID (in)	Wt (lb/ft)	Grade	Len (ft)	Set Depth
Other In Hole									
Run Date		Des			Make		OD (in)	Top (ftKB)	Btm (ftKB)
Proposed Other In Hole									
Des			Make			OD (in)	Top (ftKB)	Btm (ftKB)	



Wellbore Schematic Input Report

Well Name: BEEBE DRAW FEDERAL H15-764



Logs			
Date	Type	Depth Top (MD) (ftKB)	Btm (ftKB)
6/9/2024	Logging While Drilling (LWD)	1,926	15,288.0
6/26/2024	CBL/CCL/GR	25	7,205.0
Job Supply Amounts			
Supply Item Des	Job Supply Type	Unit	Job Category
Total Re	Total Co	Total Re	Total Co
Daily Cost Breakdown by Category			
Field Est (Cost)	Description	Note	