



**RADIAL BOND TOOL
GAMMA RAY
CCL**

Company CIVITAS
Well ARISTOCRAT ANGUS 06-04-02
Field WATTENBERG
County WELD
State CO

Company CIVITAS
Well ARISTOCRAT ANGUS 06-04-02
Field WATTENBERG
County WELD State CO

Location: API # : 05-123-33027
LAT 40.248964 LONG -104.628588
SW/SE
SEC 2 TWP 3N RGE 65W
Permanent Datum GL Elevation 4781'
Log Measured From KB 13'
Drilling Measured From KB
Other Services
Elevation
K.B. 4794'
D.F. 4793'
G.L. 4781'

Date MAY 31 2024
Run Number ONE
Depth Driller 8110'
Depth Logger 699'
Bottom Logged Interval 693'
Top Log Interval SURFACE
Open Hole Size 7.875"
Type Fluid WATER
Density / Viscosity N/A
Max. Recorded Temp. N/A
Estimated Cement Top N/A
Time Well Ready ON ARRIVAL
Time Logger on Bottom N/A
Equipment Number 3814
Location GREELEY
Recorded By MICHAEL RAMSEY
Witnessed By MIKE COLE

Borehole Record				Tubing Record			
Run Number	Bit	From	To	Size	Weight	From	To


Casing Record	Size	Wgt/Ft	Top	Bottom
Surface String	13.375"	54.5#	SURFACE	757'
Prot. String				
Production String	4.5"	11.6#	SURFACE	8127'
Liner				

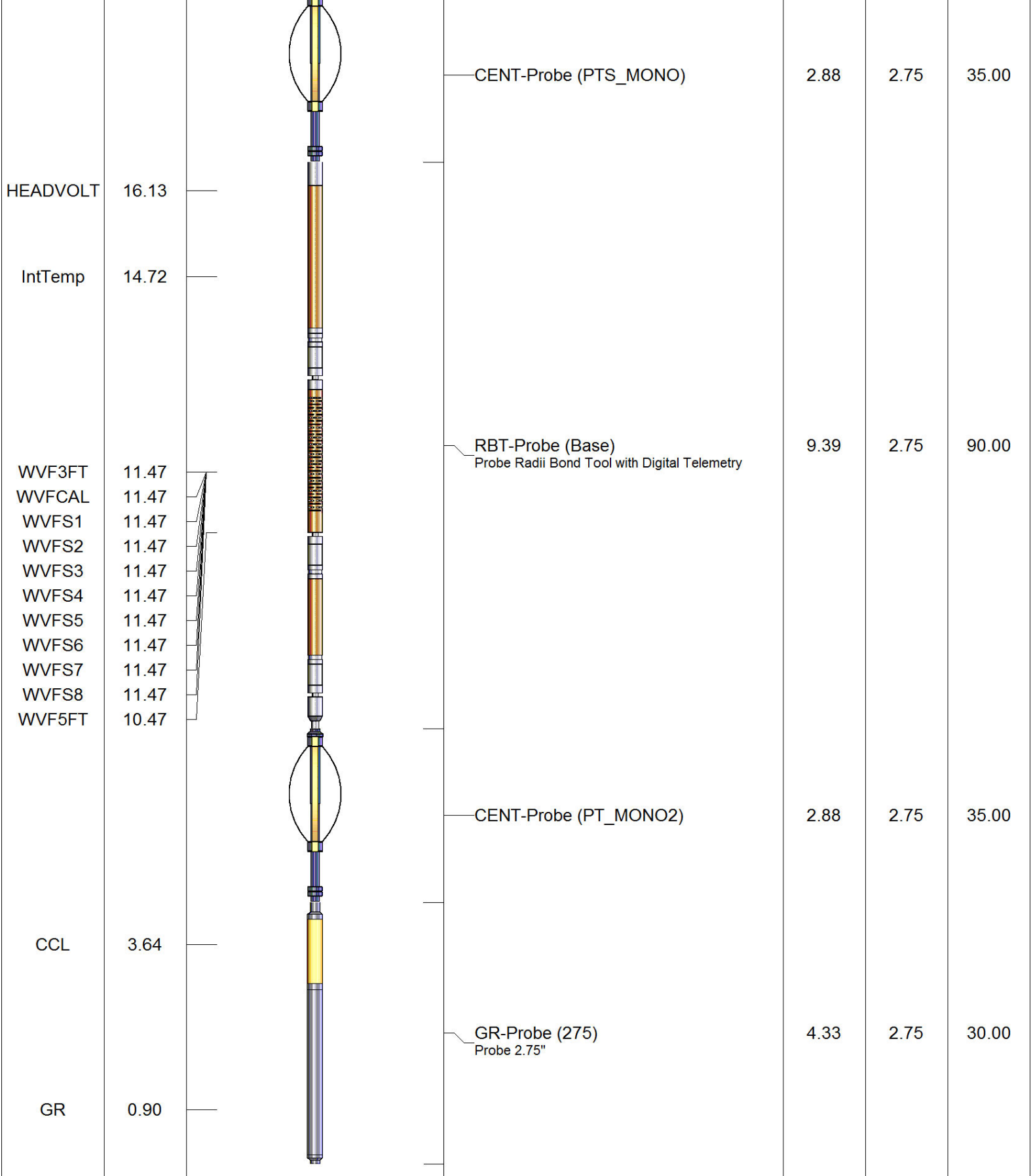
<<< Fold Here >>>

All interpretations are opinions based on inferences from electrical or other measurements and we cannot and do not guarantee the accuracy or correctness of any interpretation, and we shall not, except in the case of gross or willful negligence on our part, be liable or responsible for any loss, costs, damages, or expenses incurred or sustained by anyone resulting from any interpretation made by any of our officers, agents or employees. These interpretations are also subject to our general terms and conditions set out in our current Price Schedule.

Comments

**RAN RBL TO VERIFY CEMENT BOND
WELL LOADED UPON ARRIVAL
LOG CORRELATED TO AXIS RCBL DATED MAY 28, 2024
UNABLE TO CALIBRATE DUE TO NO CLEAR FREE PIPE
RAN PREVIOUS 4.5" 11.6# CALIBRATION**

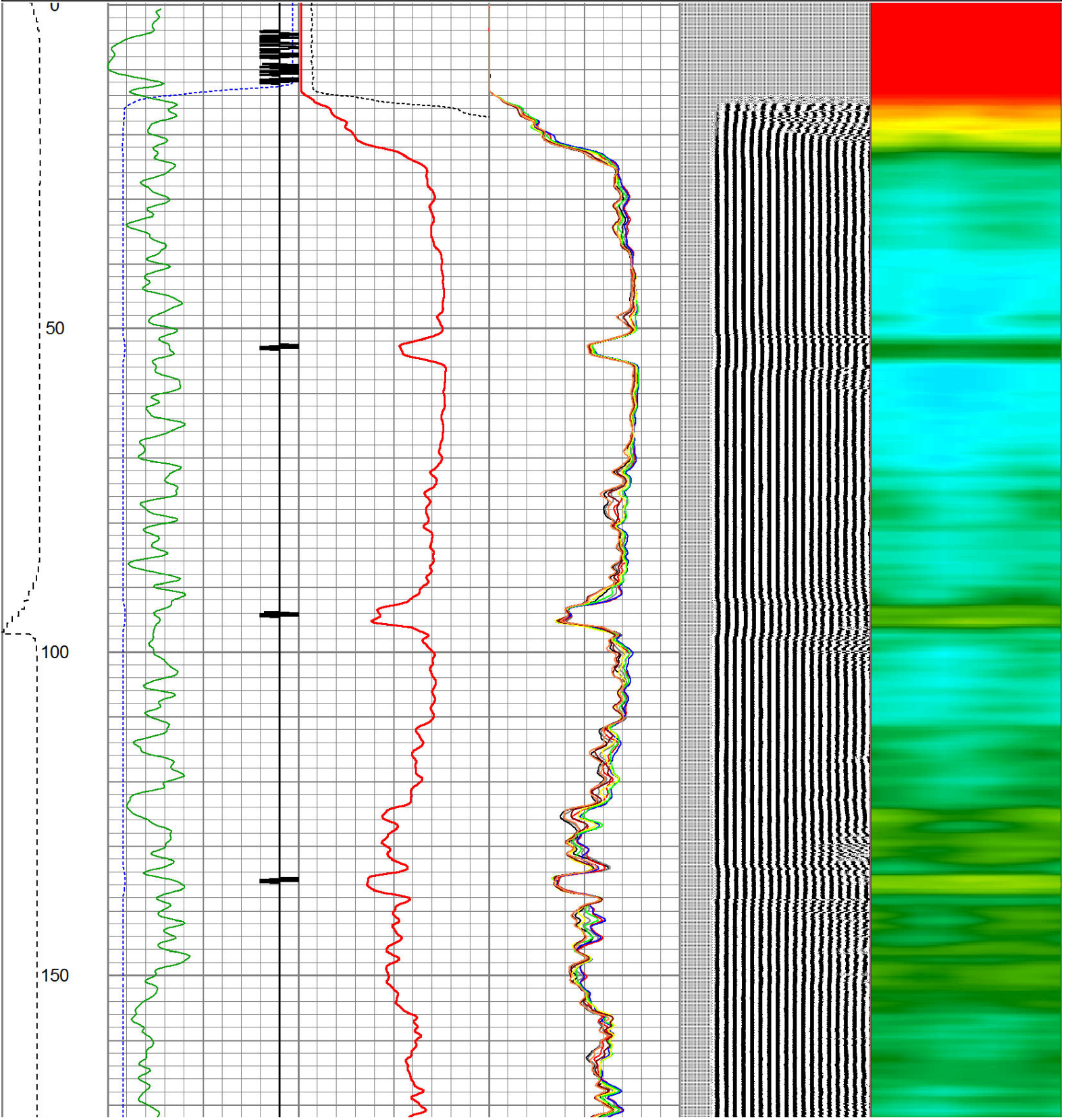
Sensor	Offset (ft)	Schematic	Description	Len (ft)	OD (in)	Wt (lb)
			CHD1_4	1.00	1.44	1.00



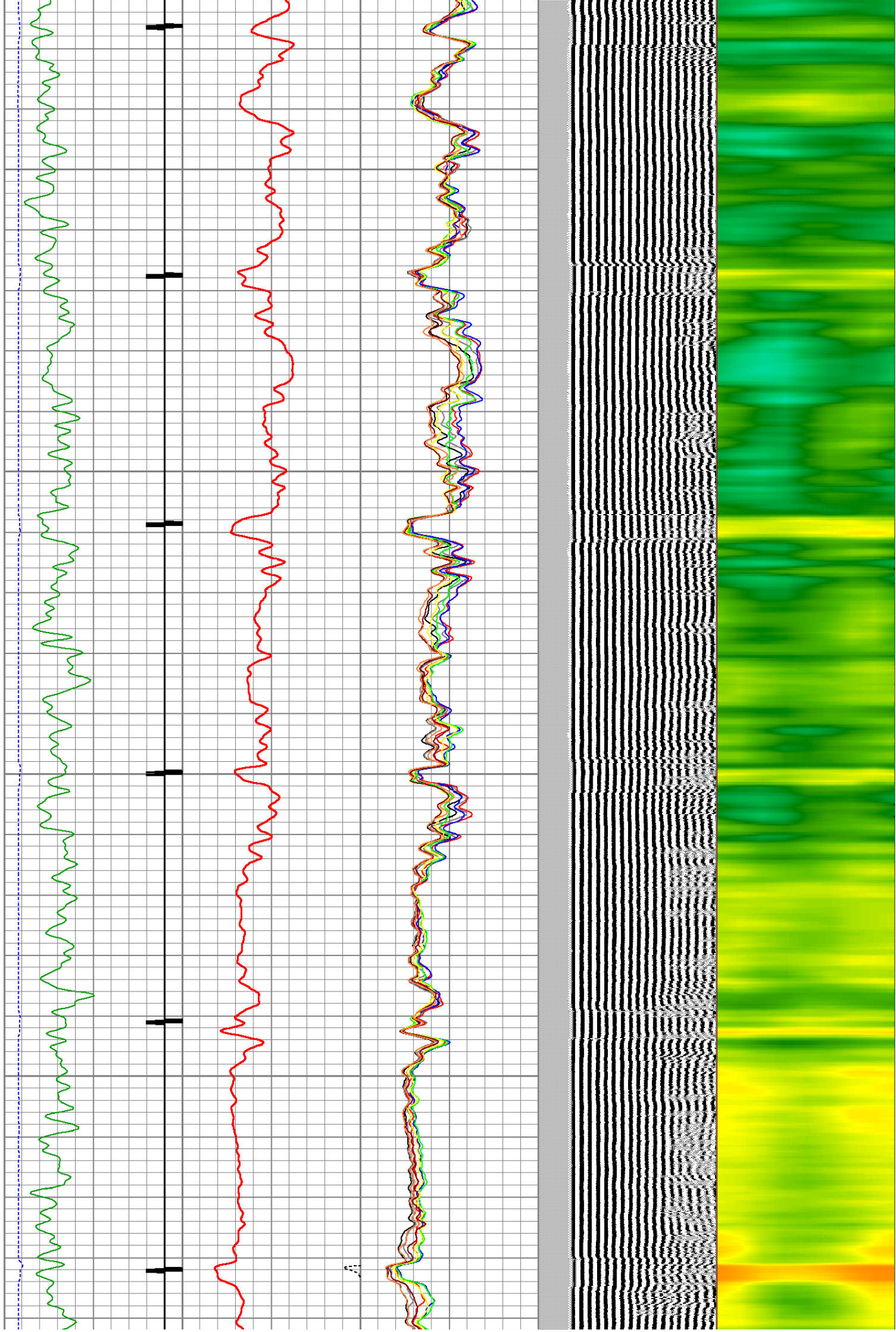
Dataset: aristocrat angus 06-04-02 5-31-2024.db: field/well/run1/pass2
 Total Length: 20.49 ft
 Total Weight: 191.00 lb
 O.D. 2.75 in

Database File: aristocrat angus 06-04-02 5-31-2024.db
 Dataset Pathname: pass2
 Presentation Format: ips_rbt

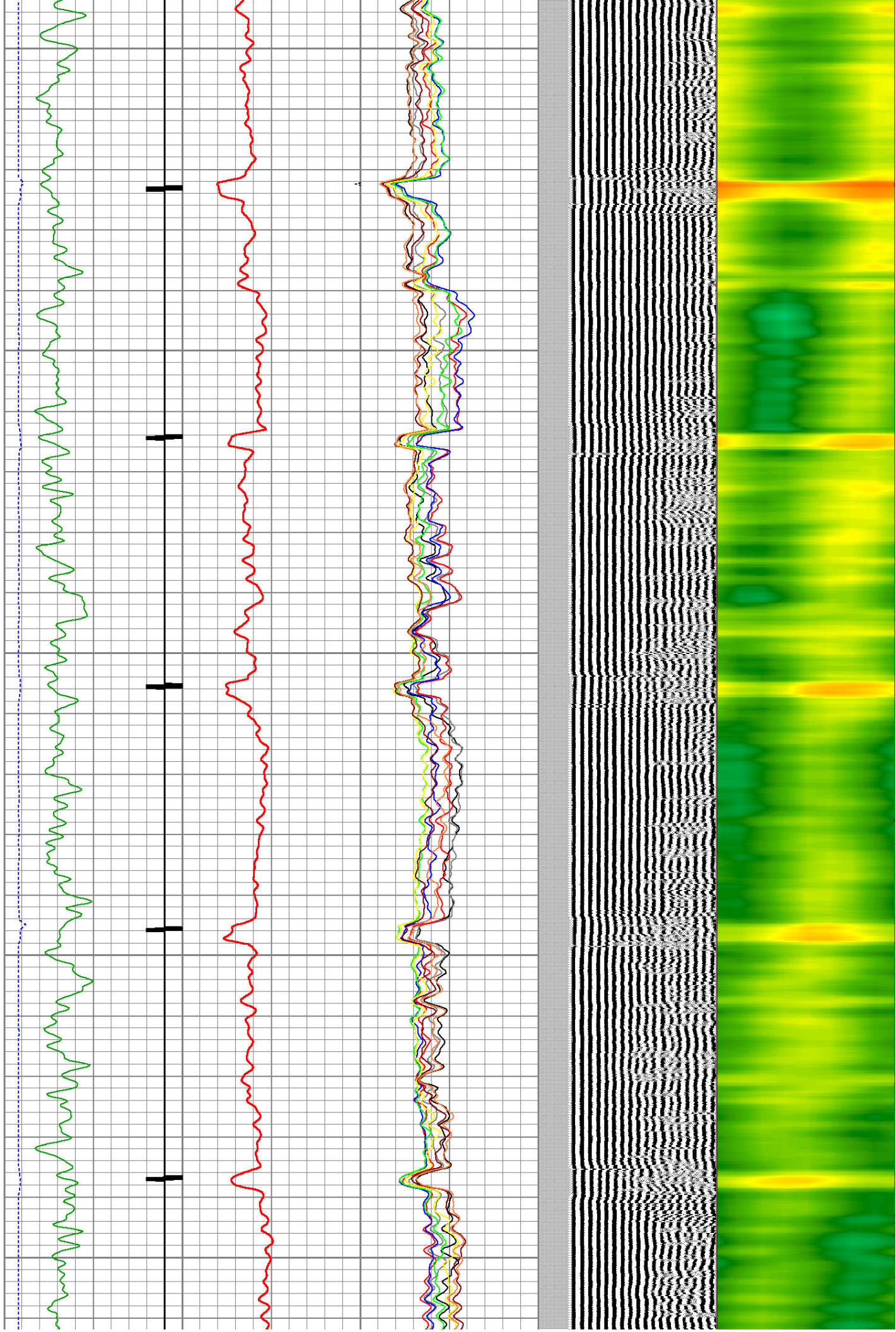
LSPD	200	TT (usec)	1000	0	AMP (mV)	100	0	AMPS1	100	200	VDL	1200	1	Cement Map	8
(ft/min)	-9	CCL	1	0	AMPx5 (mV)	20	0	AMPS2	100				1		100
0	250	GR (GAPI)	150					AMPS3	100						
		GR (GAPI)	400					AMPS4	100						
								AMPS5	100						
								AMPS6	100						
								AMPS7	100						
								AMPS8	100						

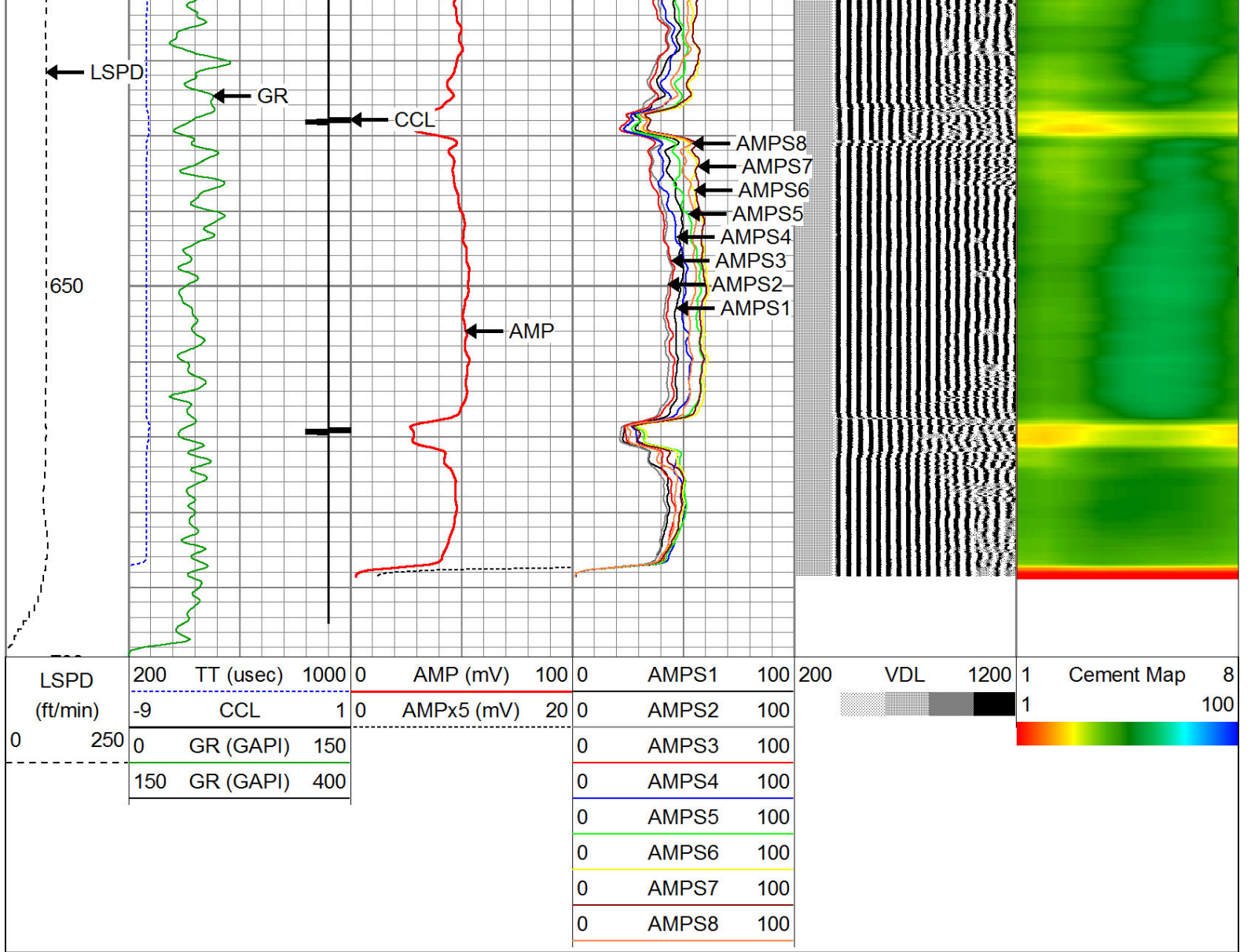


200
250
300
350



400
450
500
550
600





Company	CIVITAS
Well	ARISTOCRAT ANGUS 06-04-02
Field	WATTENBERG
County	WELD
State	CO