



**RADIAL BOND TOOL
GAMMA RAY
CCL**

Company CIVITAS
Well ARISTOCRAT ANGUS 06-04-02
Field WATTENBERG
County WELD
State CO Country USA

Company CIVITAS
Well ARISTOCRAT ANGUS 06-04-02
Field WATTENBERG
County WELD
State CO Country USA

Location: API #: 05-123-33027
SWSE
LAT. 40.248964 LONG. -104.628588
SEC 4 TWP 3N RGE 65W
Permanent Datum GL Elevation 4781'
Log Measured From KB 13'
Drilling Measured From KB
Other Services
Elevation
K.B. 4794'
D.F. 4793'
G.L. 4781'

Date 3-18-24
Run Number ONE
Depth Driller 8140'
Depth Logger 3000'
Bottom Logged Interval 3004'
Top Log Interval SURFACE
Open Hole Size 12.25"
Type Fluid WATER
Density / Viscosity NA
Max. Recorded Temp. NA
Estimated Cement Top NA
Time Well Ready ON ARRIVAL
Time Logger on Bottom NA
Equipment Number 3815
Location GREELEY, CO
Recorded By P.GULLICKSON
Witnessed By E.CHAVEZ

Borehole Record				Tubing Record			
Run Number	Bit	From	To	Size	Weight	From	To


	Size	Mgt/Ft	Top	Bottom
Casing Record				
Surface String	13.375'	54.5#	SURFACE	757'
Prot. String				
Production String	4.5"	11.6#	SURFACE	8127'
Liner				

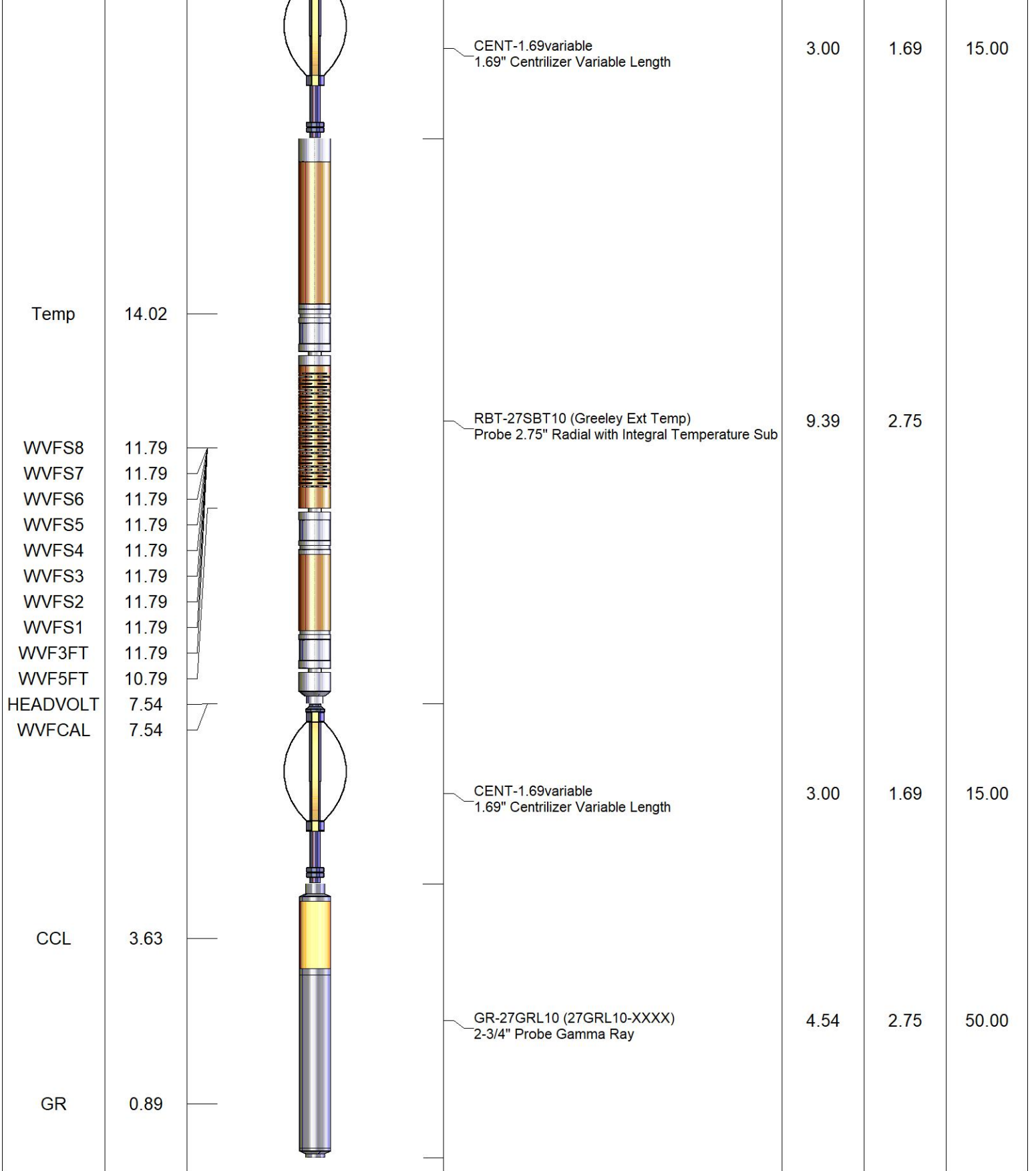
<<< Fold Here >>>

All interpretations are opinions based on inferences from electrical or other measurements and we cannot and do not guarantee the accuracy or correctness of any interpretation, and we shall not, except in the case of gross or willful negligence on our part, be liable or responsible for any loss, costs, damages, or expenses incurred or sustained by anyone resulting from any interpretation made by any of our officers, agents or employees. These interpretations are also subject to our general terms and conditions set out in our current Price Schedule.

Comments

**RAN CBL TO VERIFY CEMENT BOND
WELL LOADED UPON ARRIVAL,**

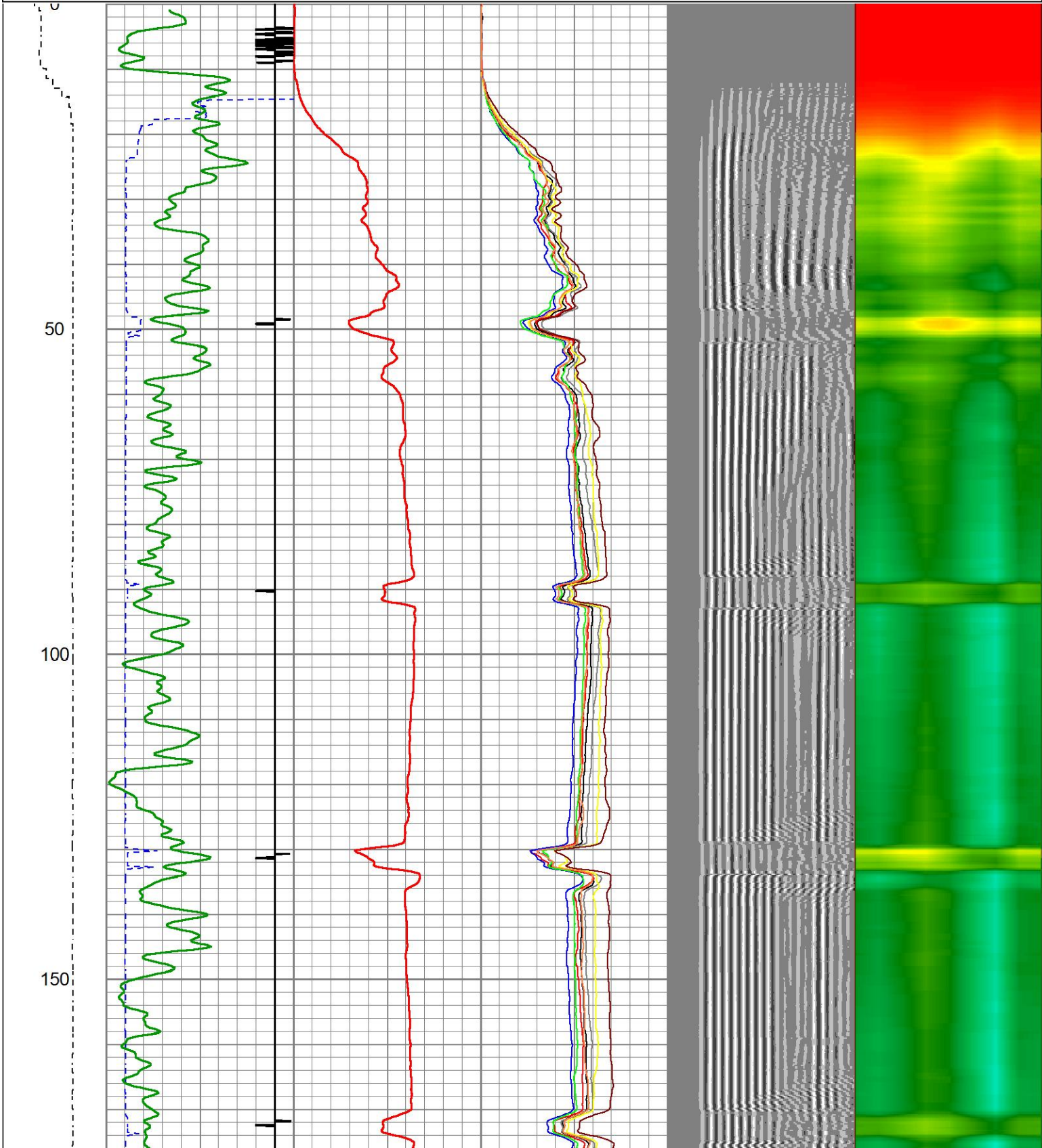
Sensor	Offset (ft)	Schematic	Description	Length (ft)	O.D. (in)	Weight (lb)
			CHD-1_11/16_Cablehead 1 11/16 Cablehead	1.00	1.68	5.00

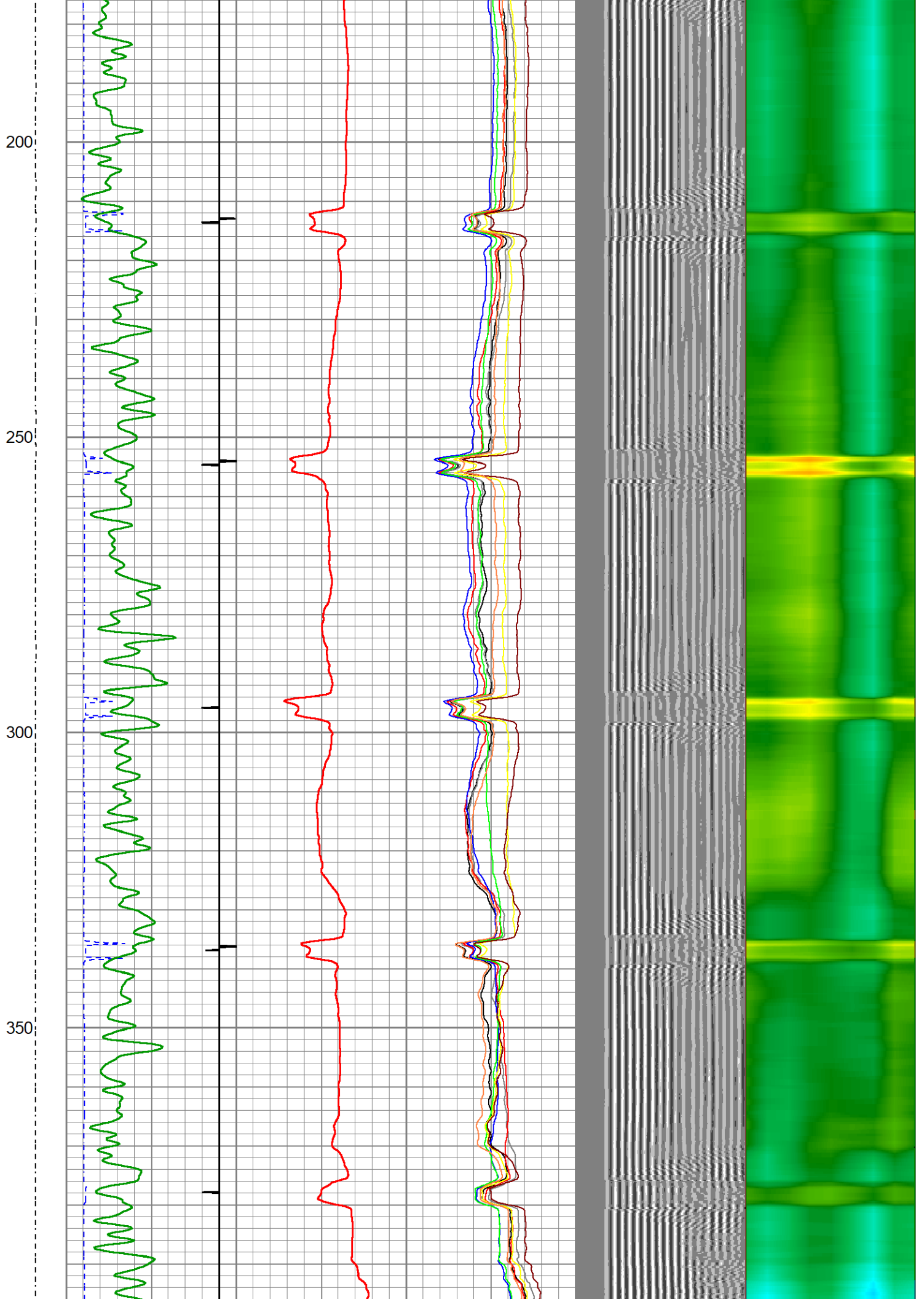


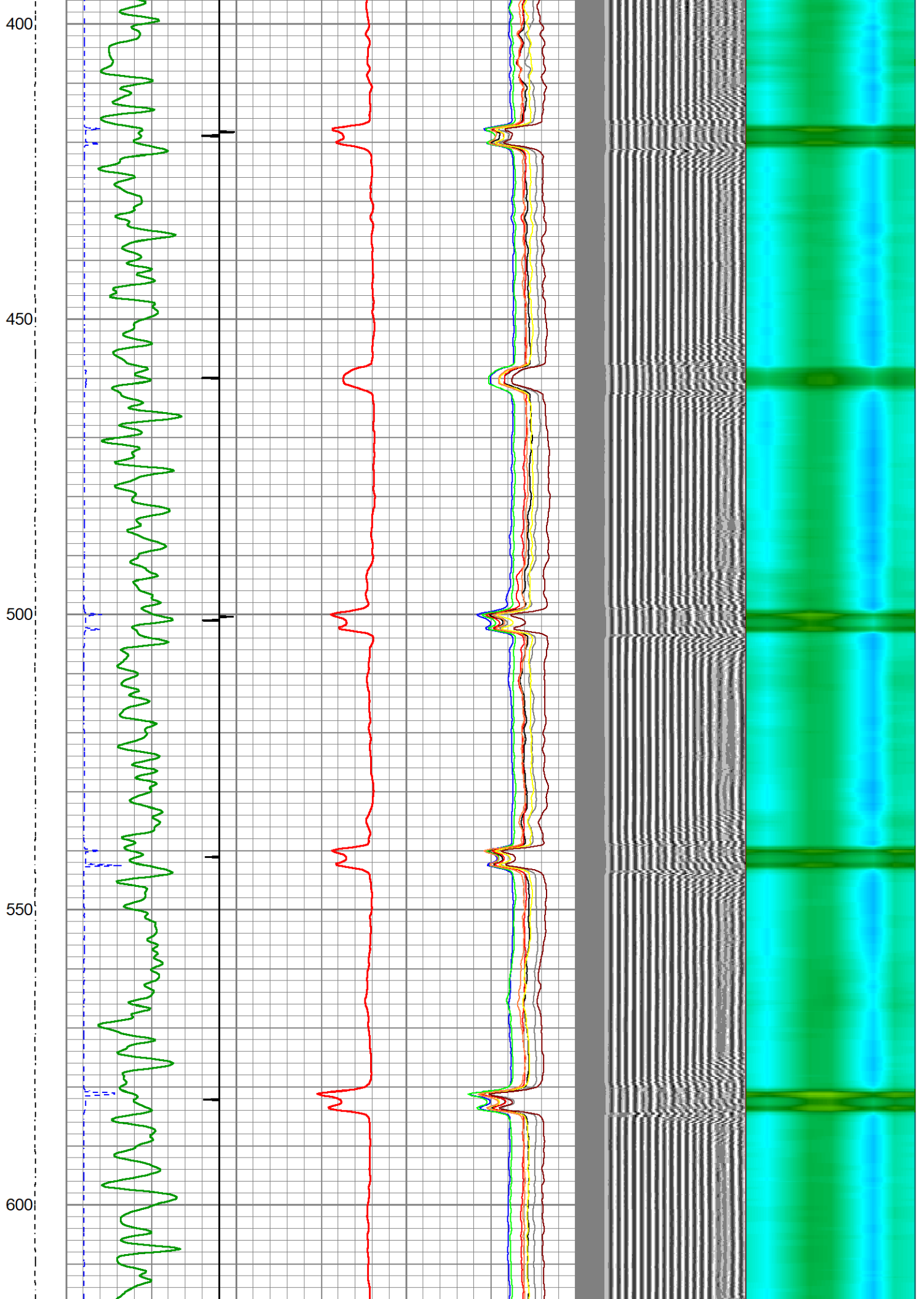
Dataset: aristocrate angus 06-04-02.db: field/well/run1/pass10
 Total length: 20.93 ft
 Total weight: 85.00 lb
 O.D.: 2.75 in

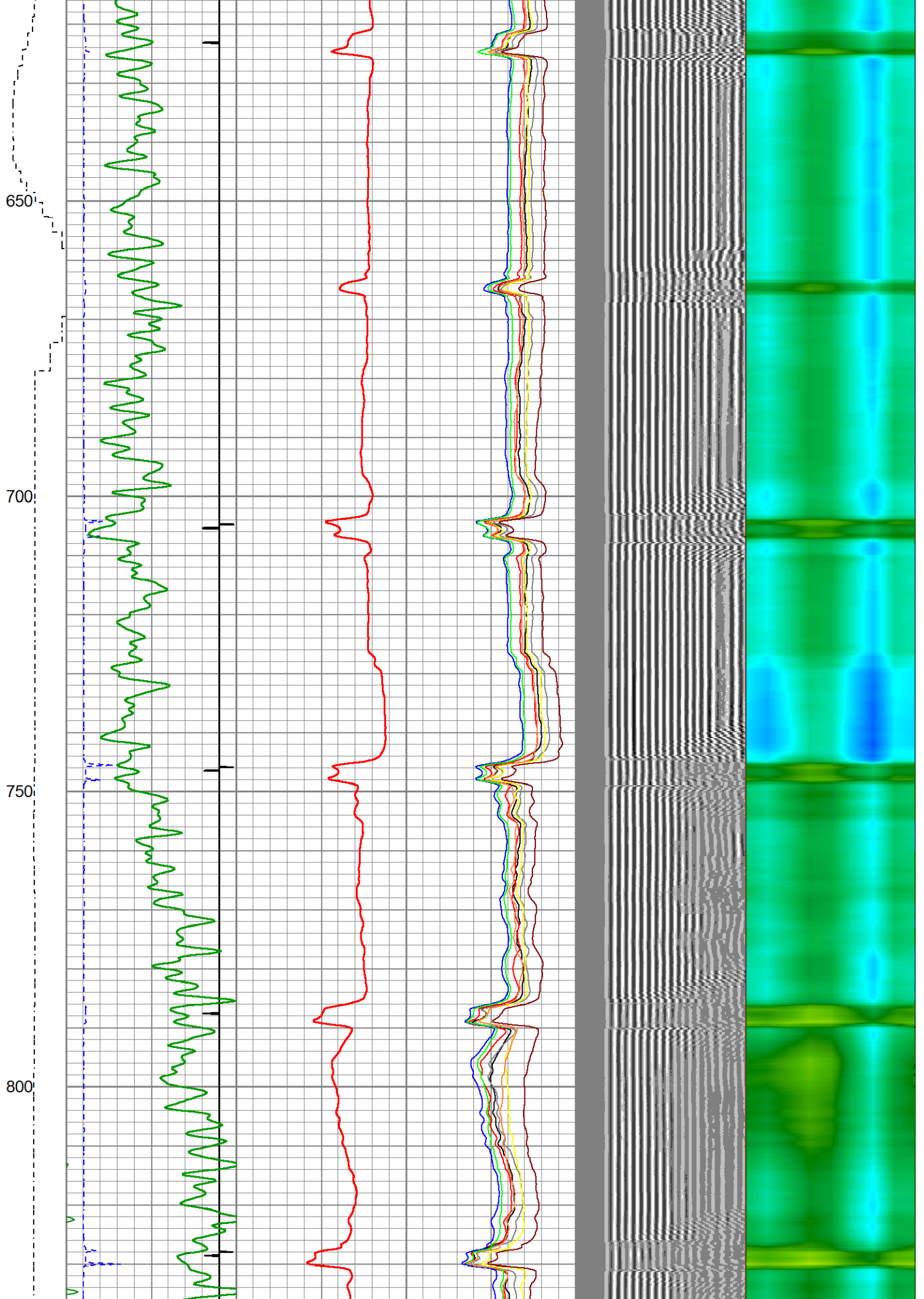
Database File aristocrate angus 06-04-02.db
 Dataset Pathname pass10
 Presentation Format ips_rbtcolorcivitas
 Dataset Creation Mon Mar 18 16:02:20 2024
 Charted by Depth in Feet scaled 1:240

LSPD	200	TT (usec)	1000	0	AMP (mV)	100	0	AMPS1	100	200	VDL (usec)	1200	1	Cement Map	8
(ft/min)	-9	CCL	1				0	AMPS2	100						
0	250	GR (GAPI)	150				0	AMPS3	100						
		GR (GAPI)	400				0	AMPS4	100						
							0	AMPS5	100						
							0	AMPS6	100						
							0	AMPS7	100						
							0	AMPS8	100						

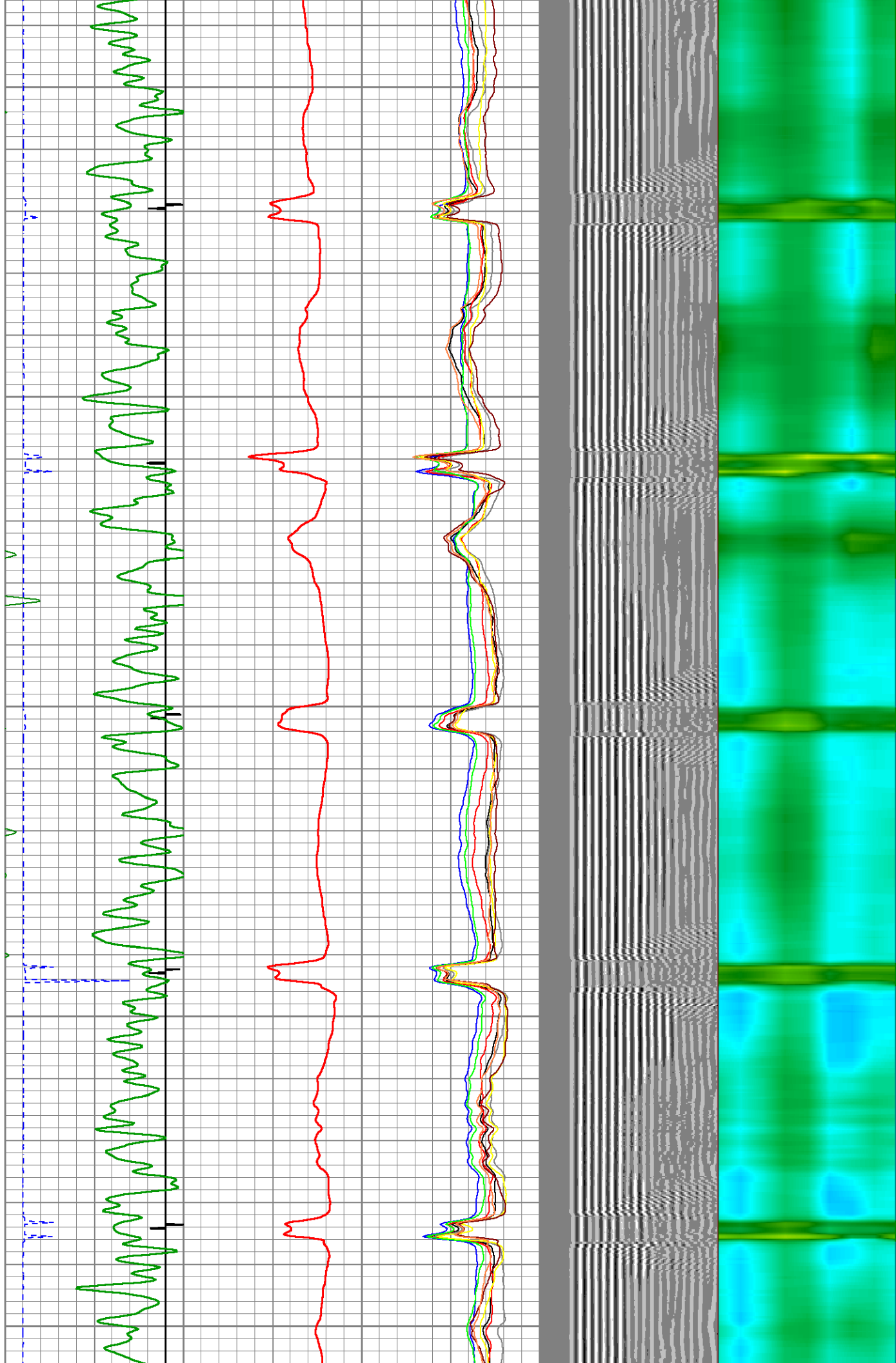








850
900
950
1000
1050

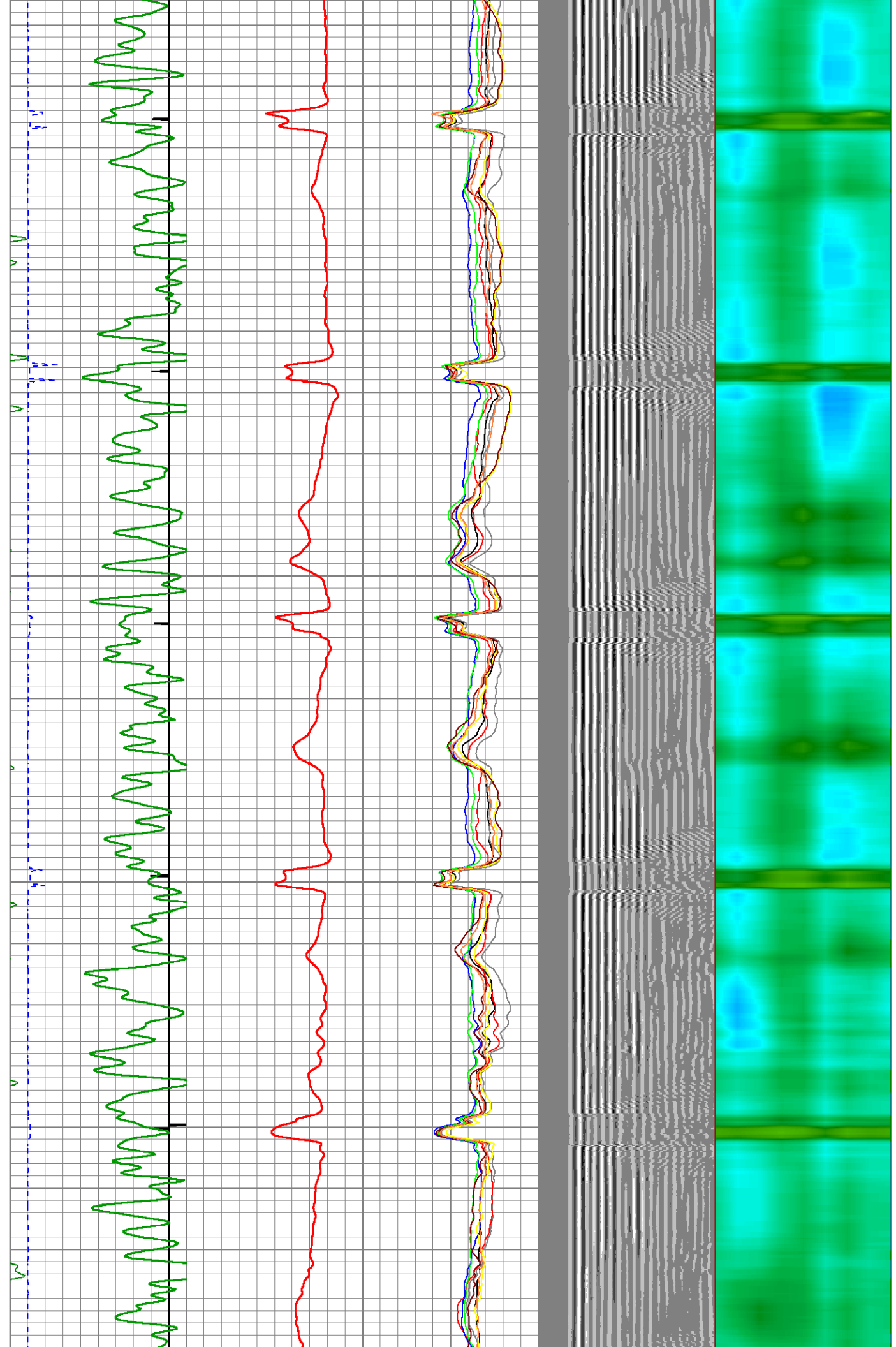


1100

1150

1200

1250

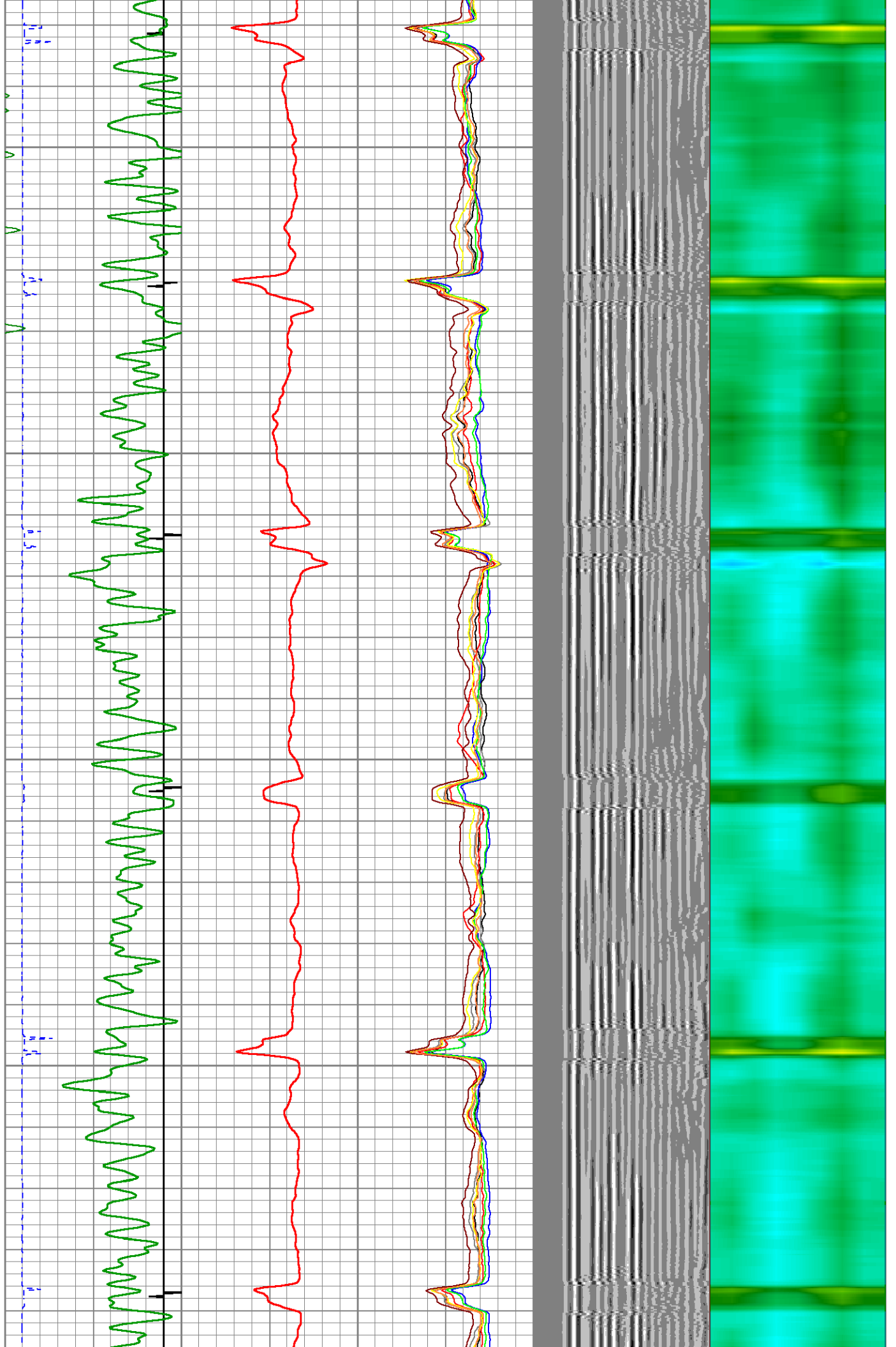


1300

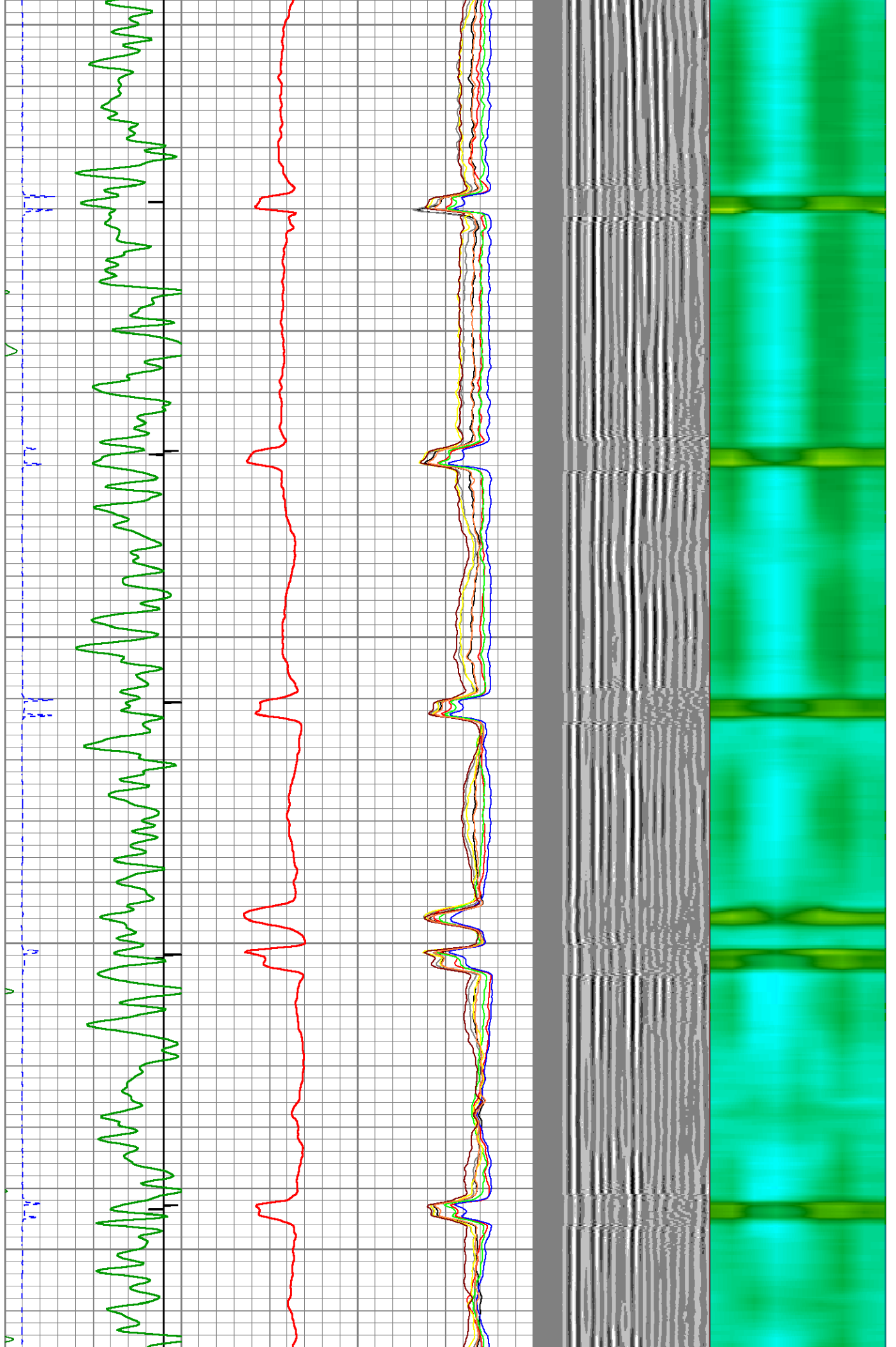
1350

1400

1450



1500
1550
1600
1650
1700

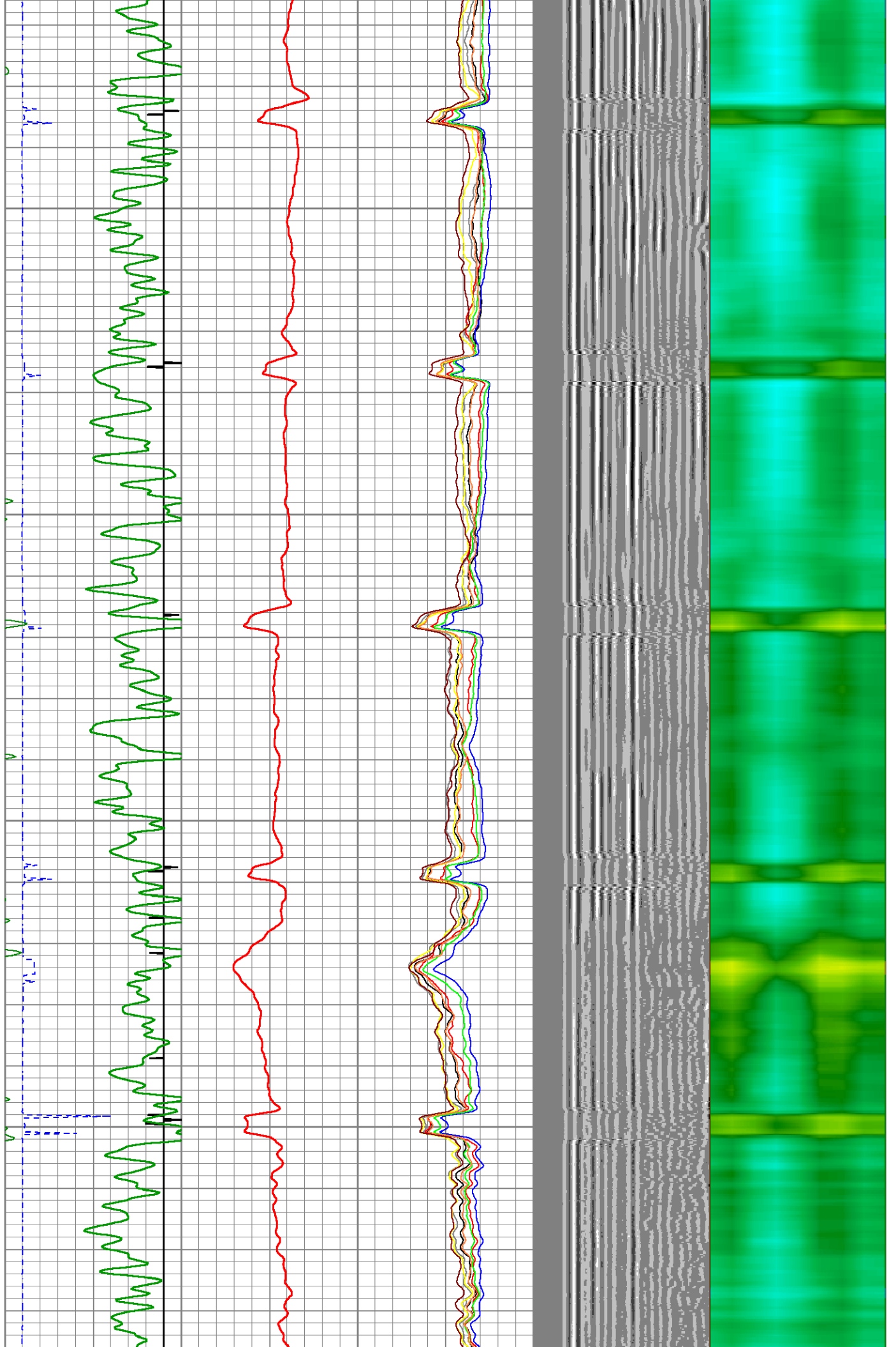


1750

1800

1850

1900



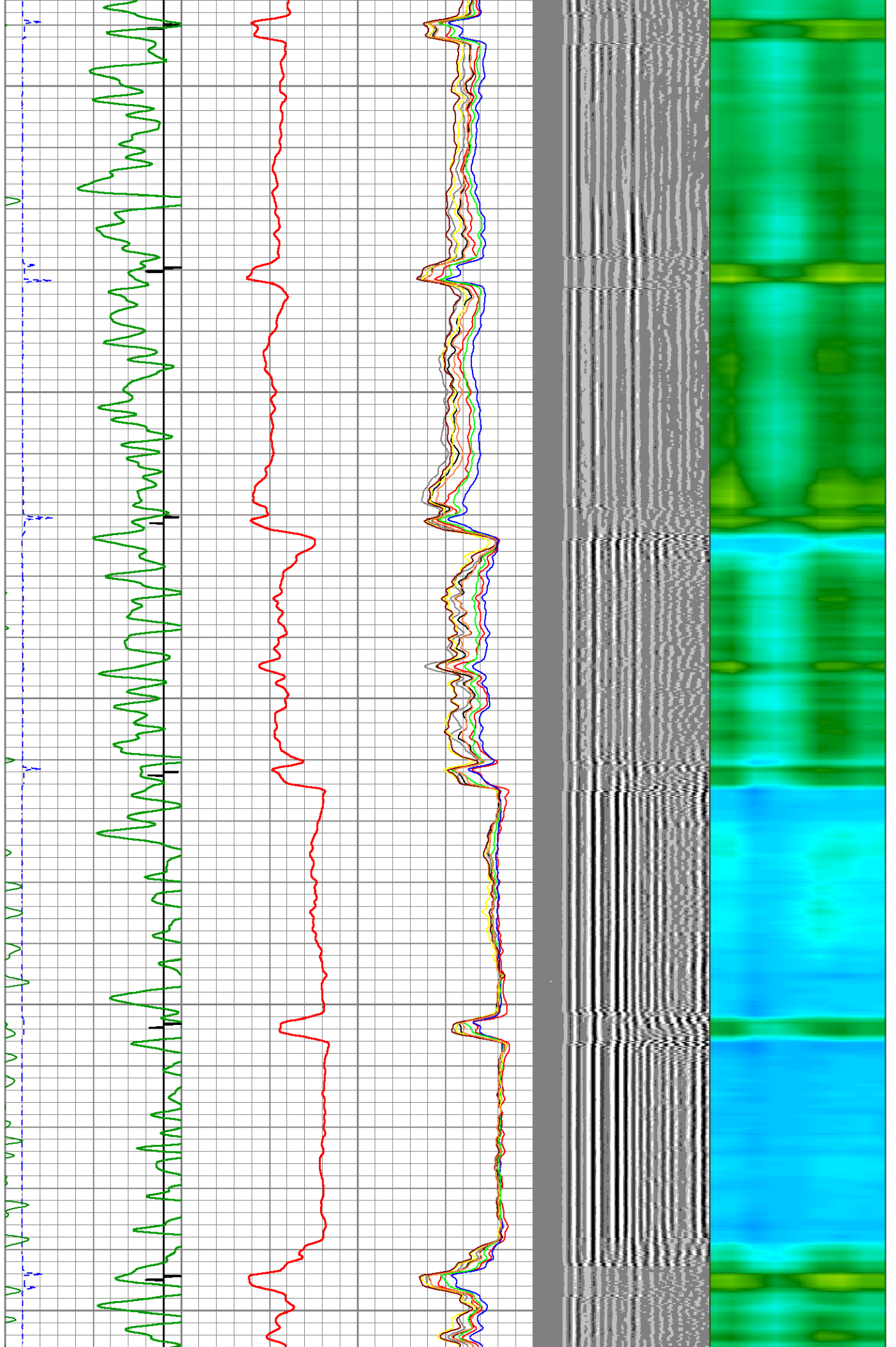
1950

2000

2050

2100

2150

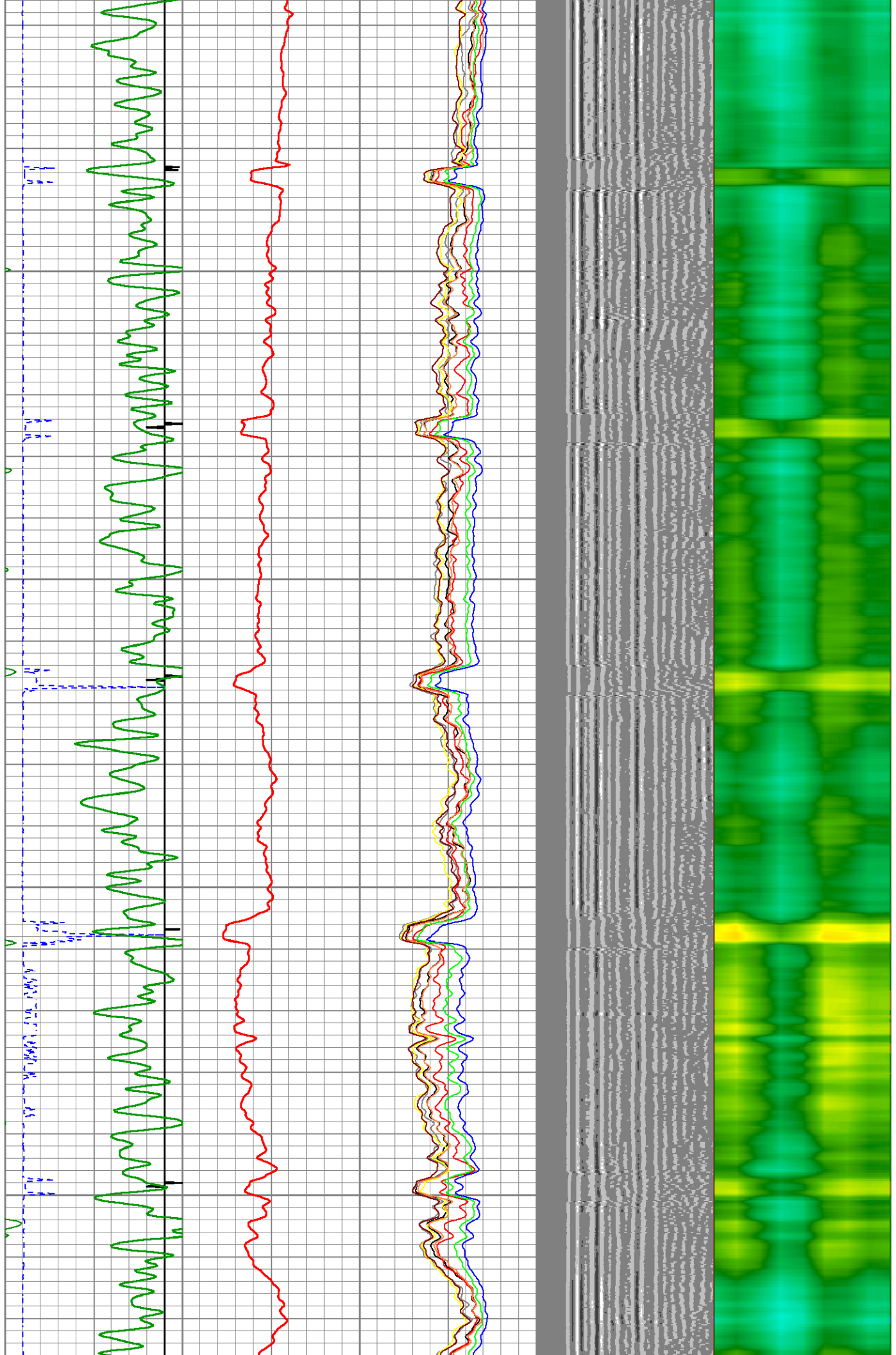


2200

2250

2300

2350

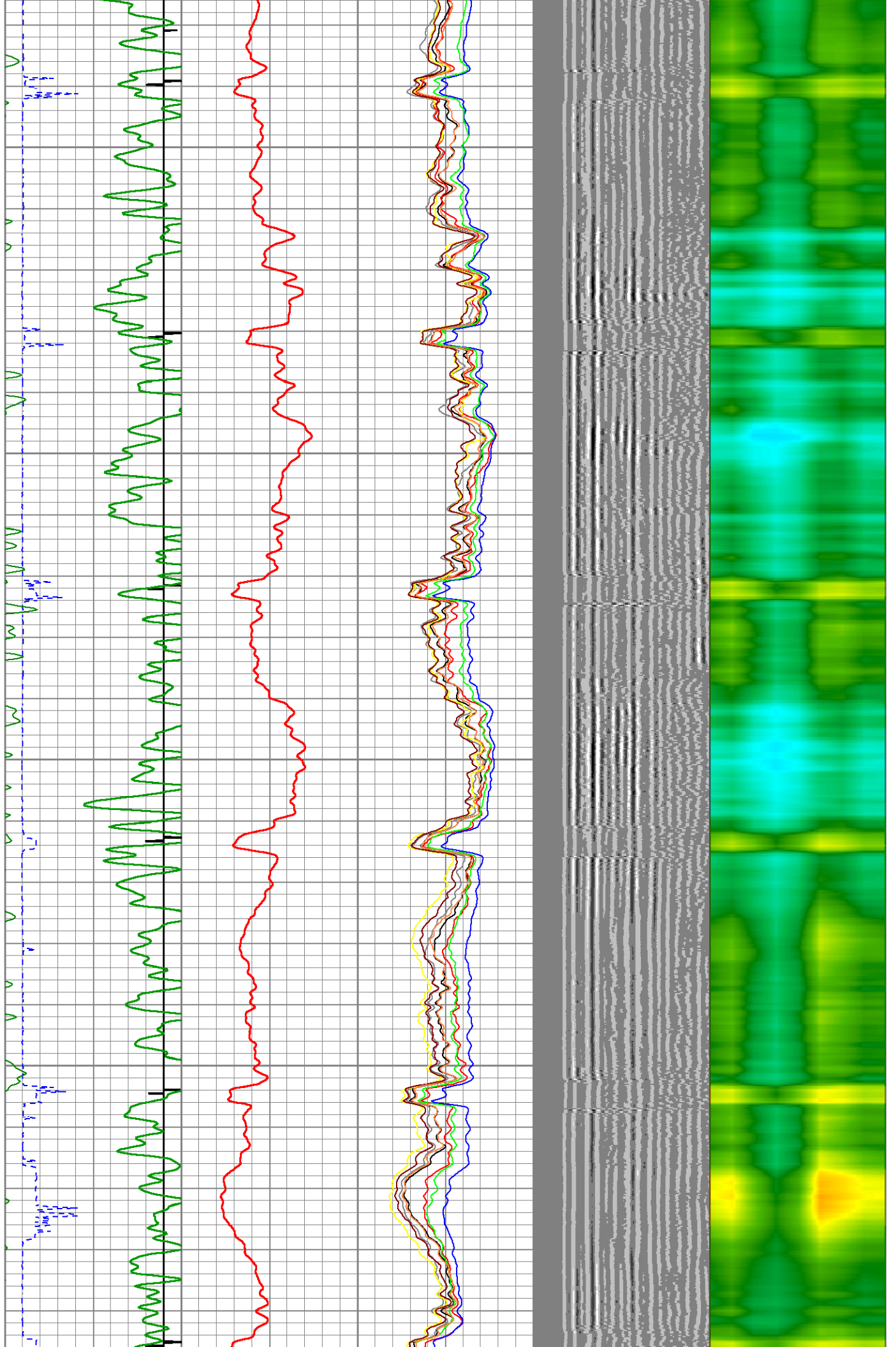


2400

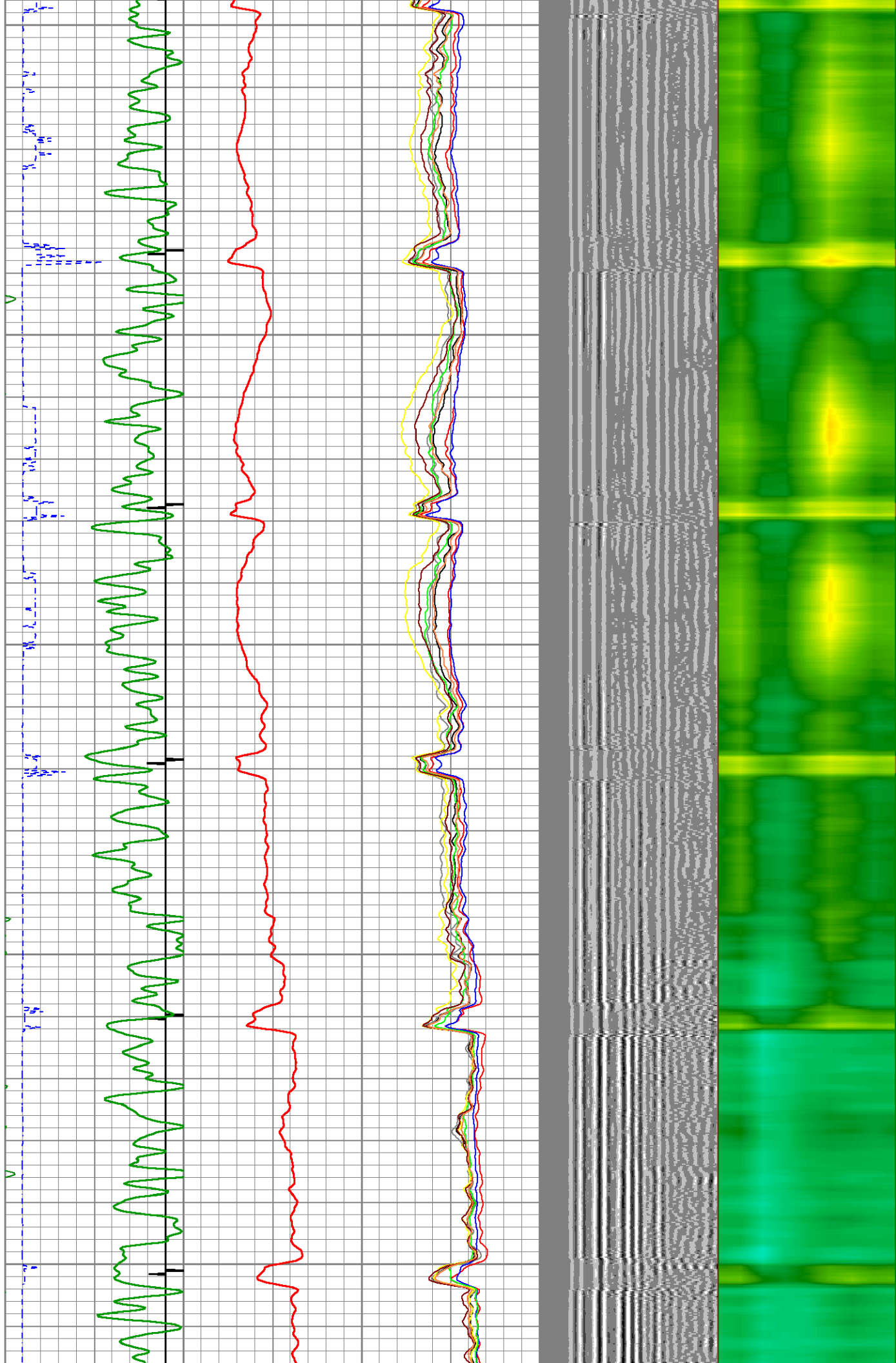
2450

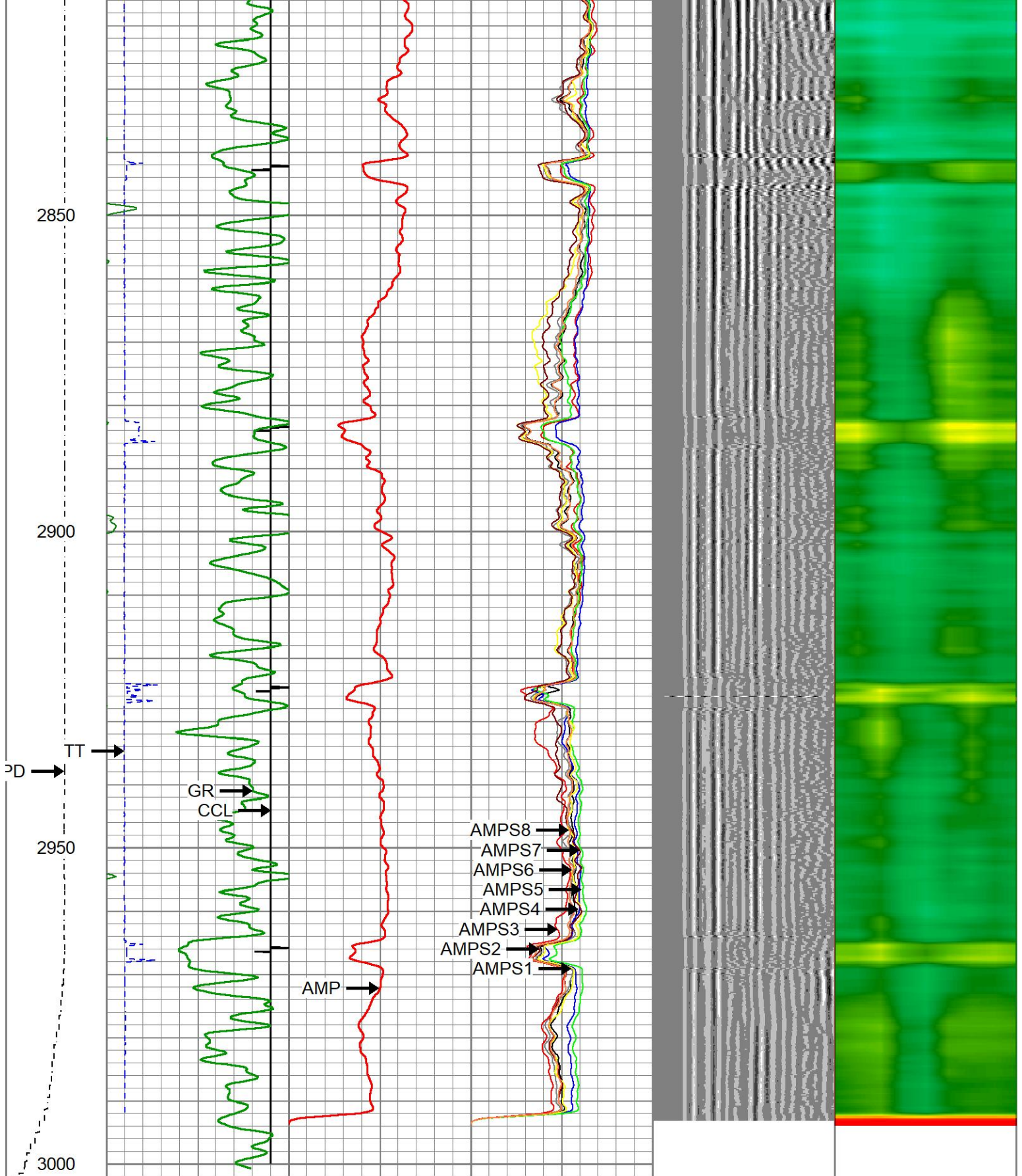
2500

2550



2600
2650
2700
2750
2800





LSPD	200	TT (usec)	1000	0	AMP (mV)	100	0	AMPS1	100	200	VDL (usec)	1200	1	Cement Map	8
(ft/min)	-9	CCL	1					AMPS2	100						
0	250	0	GR (GAPI)	150				AMPS3	100						
		150	GR (GAPI)	400				AMPS4	100						
								AMPS5	100						
								AMPS6	100						
								AMPS7	100						

Calibration Report

Database File aristocrate angus 06-04-02.db
 Dataset Pathname pass10
 Dataset Creation Mon Mar 18 16:02:20 2024

Gamma Ray Calibration Report

Serial Number: 27GRL10-XXXX
 Tool Model: 27GRL10
 Performed: (Not Performed)

Calibrator Value: 1.0 GAPI

Background Reading: 0.0 cps
 Calibrator Reading: 1.0 cps

Sensitivity: 1.0000 GAPI/cps

Segmented Cement Bond Log Calibration Report

Serial Number: Greeley Ext Temp
 Tool Model: 27SBT10

Calibration Casing Diameter: 4.500 in
 Calibration Depth: 2800.590 ft

Master Calibration, performed (Derived):

	Raw (v)		Calibrated (mv)		Results	
	Zero	Cal	Zero	Cal	Gain	Offset
3'	0.005	0.974	0.250	81.196	83.485	-0.135
CAL	0.003	0.256				
5'	0.017	0.785	0.250	81.196	105.375	-1.529
SUM						
S1	0.015	1.061	0.000	81.196	77.592	-1.147
S2	0.002	0.969	0.000	81.196	83.941	-0.158
S3	0.004	1.062	0.000	81.196	76.707	-0.275
S4	0.002	1.239	0.000	81.196	65.635	-0.156
S5	0.004	1.247	0.000	81.196	65.354	-0.283
S6	0.001	1.107	0.000	81.196	73.462	-0.099
S7	0.001	1.015	0.000	81.196	80.034	-0.043
S8	0.000	1.123	0.000	81.196	72.287	-0.016

Internal Reference Calibration, performed Thu Jun 23 09:23:51 2022:

	Raw (v)		Calibrated (v)		Results	
	Zero	Cal	Zero	Cal	Gain	Offset
CAL	0.000	0.000	0.003	0.256	1.000	0.000

Air Zero Calibration, performed Mon Mar 18 15:28:27 2024:

	Raw (v)		Calibrated (v)		Results	
	Zero		Zero		Gain	Offset
3'	0.004		0.000			0.005
5'	0.004		0.000			0.017

SUM			
S1	0.004	0.000	0.015
S2	0.003	0.000	0.002
S3	0.002	0.000	0.004
S4	0.004	0.000	0.002
S5	0.004	0.000	0.004
S6	0.006	0.000	0.001
S7	0.005	0.000	0.000
S8	0.006	0.000	0.000



Company	CIVITAS	
Well	ARISTOCRAT ANGUS 06-04-02	
Field	WATTENBERG	
County	WELD	
State	CO	Country USA