



**RADIAL BOND TOOL
GAMMA RAY
CCL**

Company CIVITAS RESOURCES
Well ARISTOCRAT ANGUS 06-04-02
Field WATTENBERG
County WELD
State CO Country USA

Company CIVITAS RESOURCES
Well ARISTOCRAT ANGUS 06-04-02
Field WATTENBERG
County WELD
State CO Country USA

Location: API #: 05-123-33027
SW/SE
LAT. 40.248964 LONG. -104.628588
SEC 2 TWP 3N RGE 65W
Permanent Datum GL Elevation 4781'
Log Measured From KB 13'
Drilling Measured From KB
Other Services
Elevation
K.B. 4794'
D.F. 4793'
G.L. 4781'

Date JUNE 5 2024
Run Number ONE
Depth Driller 8110'
Depth Logger 372'
Bottom Logged Interval 368'
Top Log Interval SURFACE
Open Hole Size 7.875"
Type Fluid WATER
Density / Viscosity NA
Max. Recorded Temp. NA
Estimated Cement Top N/A
Time Well Ready ON ARRIVAL
Time Logger on Bottom NA
Equipment Number 3813
Location PLATTEVILLE, CO
Recorded By RICK MARTINEZ
Witnessed By MIKE COLE

Borehole Record			Tubing Record				
Run Number	Bit	From	To	Size	Weight	From	To


Casing Record	Size	Mgt/Ft	Top	Bottom
Surface String	13.375"	54.5#	SURFACE	757'
Prot. String				
Production String	4.5"	11.6#	SURFACE	8127'
Liner				

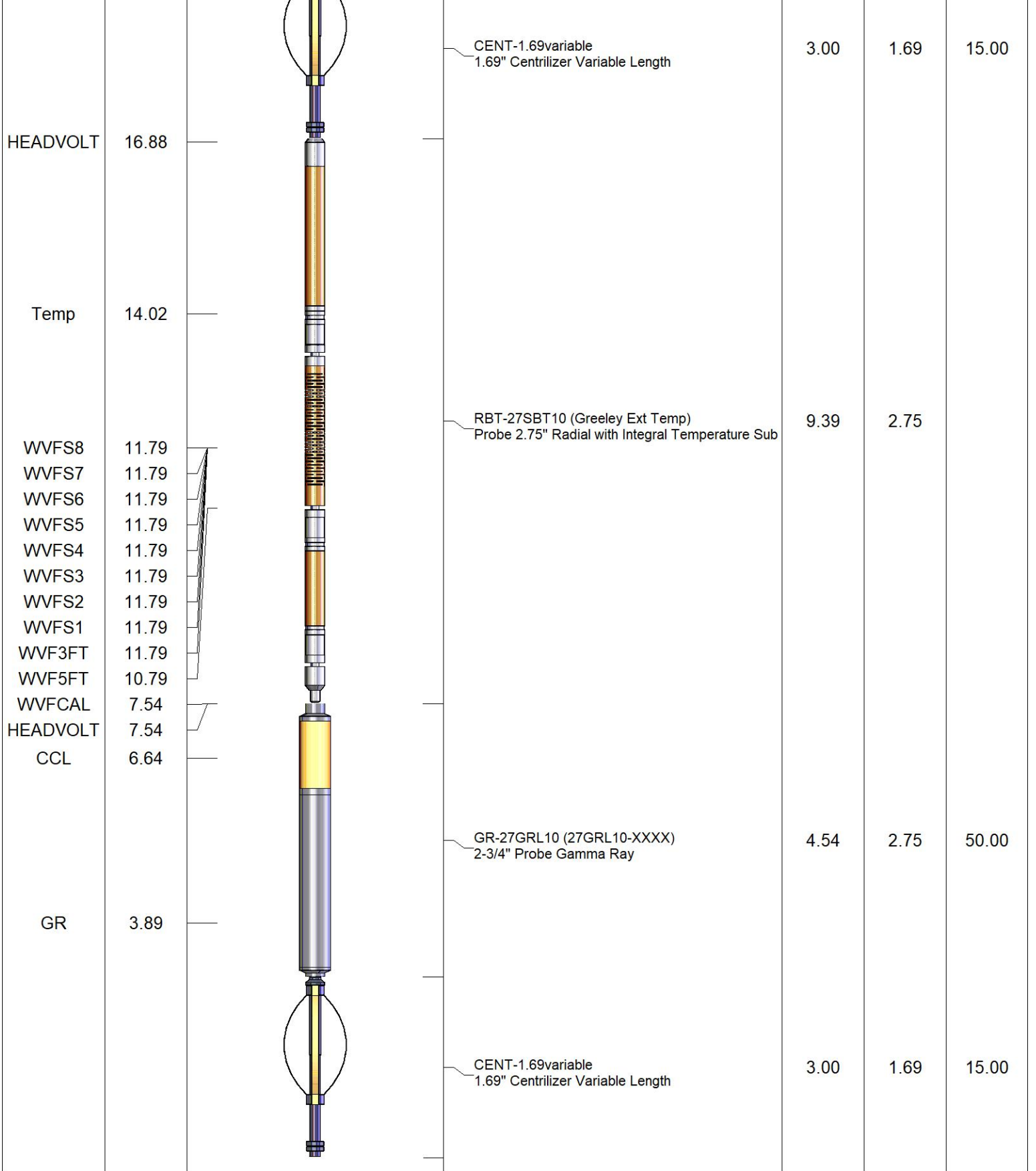
<<< Fold Here >>>

All interpretations are opinions based on inferences from electrical or other measurements and we cannot and do not guarantee the accuracy or correctness of any interpretation, and we shall not, except in the case of gross or willful negligence on our part, be liable or responsible for any loss, costs, damages, or expenses incurred or sustained by anyone resulting from any interpretation made by any of our officers, agents or employees. These interpretations are also subject to our general terms and conditions set out in our current Price Schedule.

Comments

**RAN CBL TO VERIFY CEMENT BOND
WELL LOADED UPON ARRIVAL**

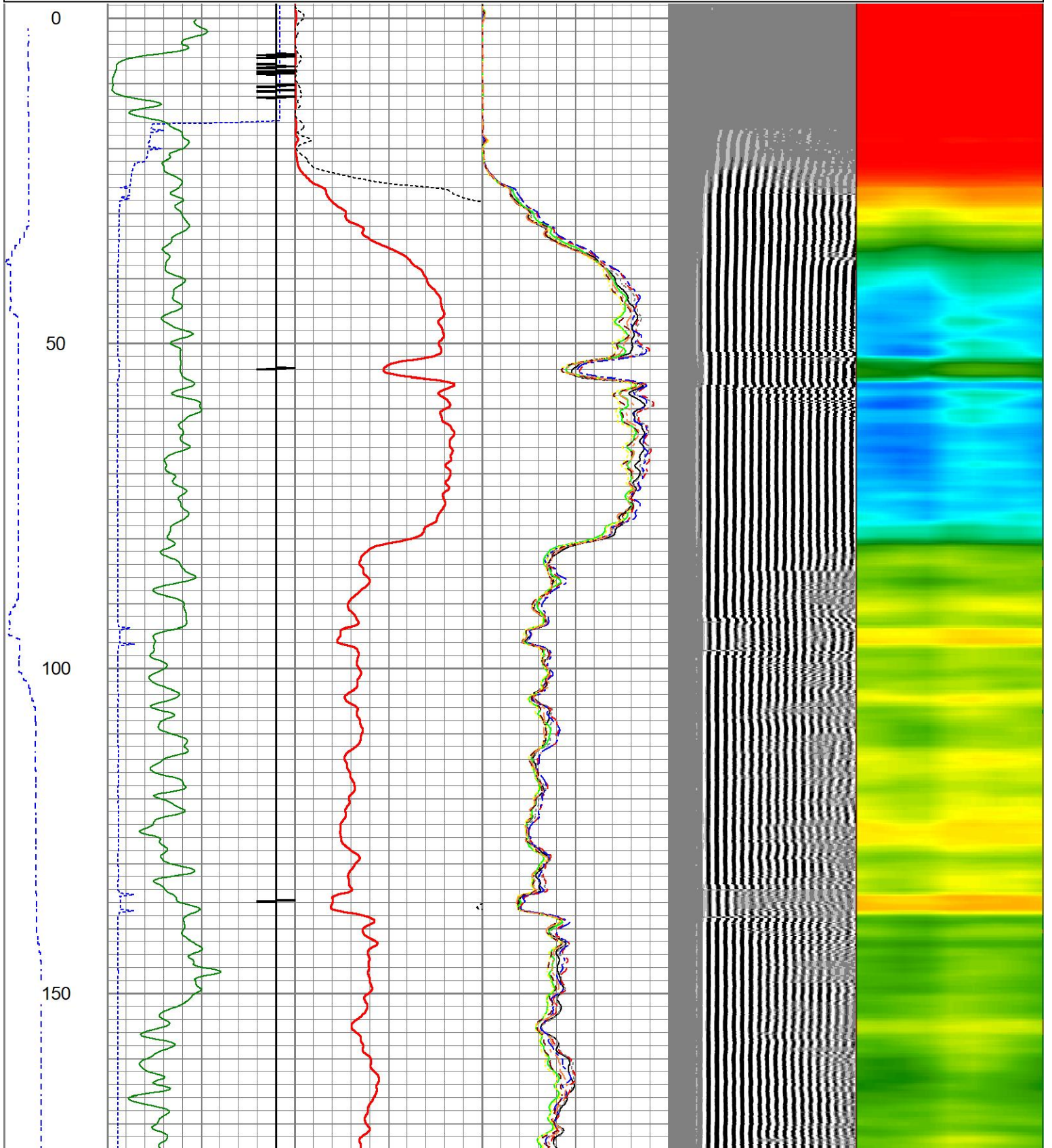
Sensor	Offset (ft)	Schematic	Description	Length (ft)	O.D. (in)	Weight (lb)
			CHD-1_11/16_Cablehead 1 11/16 Cablehead	1.00	1.68	5.00

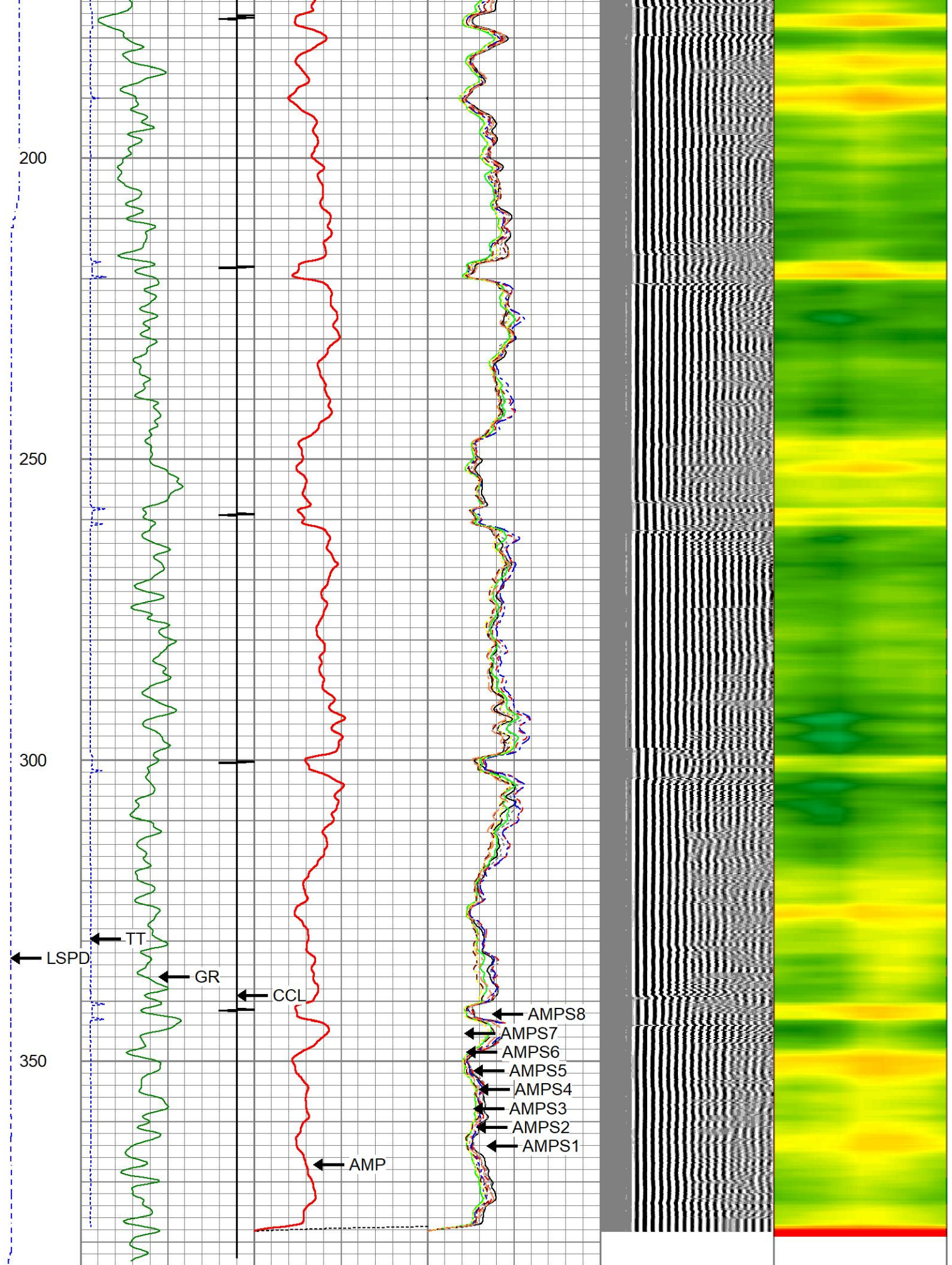


Dataset: aristocrat angus 06-04-02.db: field/well/run1/main2
 Total length: 20.93 ft
 Total weight: 85.00 lb
 O.D.: 2.75 in

Database File aristocrat angus 06-04-02.db
 Dataset Pathname main2
 Presentation Format ips_rbt Civitas
 Dataset Creation Wed Jun 05 10:55:14 2024
 Charted by Depth in Foot scaled 1:240

LSPD	200	TT (usec)	1000	0	AMP (mV)	100	0	AMPS1	100	200	VDL (usec)	1200	1	Cement Map	8
(ft/min)	-9	CCL	1	0	AMPx5 (mV)	20	0	AMPS2	100						
0	250	GR (GAPI)	150					AMPS3	100						
		GR (GAPI)	400					AMPS4	100						
								AMPS5	100						
								AMPS6	100						
								AMPS7	100						
								AMPS8	100						





LSPD	200	TT (usec)	1000	0	AMP (mV)	100	0	AMPS1	100	200	VDL (usec)	1200	1	Cement Map	8
(ft/min)	-9	CCL	1	0	AMPx5 (mV)	20	0	AMPS2	100						

0	250	0	GR (GAPI)	150	0	AMPS3	100
		150	GR (GAPI)	400	0	AMPS4	100
					0	AMPS5	100
					0	AMPS6	100
					0	AMPS7	100
					0	AMPS8	100

Calibration Report

Database File aristocrat angus 06-04-02.db
 Dataset Pathname main2
 Dataset Creation Wed Jun 05 10:55:14 2024

Gamma Ray Calibration Report

Serial Number: 27GRL10-XXXX
 Tool Model: 27GRL10
 Performed: (Not Performed)

Calibrator Value: 1.0 GAPI

Background Reading: 0.0 cps
 Calibrator Reading: 1.0 cps

Sensitivity: 1.0000 GAPI/cps

Segmented Cement Bond Log Calibration Report

Serial Number: Greeley Ext Temp
 Tool Model: 27SBT10

Calibration Casing Diameter: 4.500 in
 Calibration Depth: 3579.139 ft

Master Calibration, performed Thu May 9 17:21:44 2024:

	Raw (v)		Calibrated (mv)		Results	
	Zero	Cal	Zero	Cal	Gain	Offset
3'	0.015	0.843	0.250	81.196	97.763	-1.241
CAL	1.031	1.102				
5'	0.019	0.690	0.250	81.196	120.502	-2.004
SUM						
S1	0.016	0.816	0.000	81.196	101.418	-1.582
S2	0.016	0.786	0.000	81.196	105.422	-1.654
S3	0.016	0.779	0.000	81.196	106.361	-1.667
S4	0.016	0.794	0.000	81.196	104.384	-1.697
S5	0.016	0.868	0.000	81.196	95.273	-1.528
S6	0.016	0.896	0.000	81.196	92.274	-1.437
S7	0.016	0.874	0.000	81.196	94.590	-1.479
S8	0.016	0.852	0.000	81.196	97.061	-1.512

Internal Reference Calibration, performed Wed Sep 7 12:57:05 2022:

	Raw (v)		Calibrated (v)		Results	
	Zero	Cal	Zero	Cal	Gain	Offset
CAL	0.000	0.000	1.031	1.102	1.000	0.000

Air Zero Calibration, performed Wed Jun 5 10:37:37 2024:

	Raw (v)	Calibrated (v)	Results
	Zero	Zero	Offset
3'	0.020	0.000	-0.005
5'	0.018	0.000	0.001
SUM			
S1	0.018	0.000	-0.002
S2	0.020	0.000	-0.004
S3	0.020	0.000	-0.004
S4	0.020	0.000	-0.003
S5	0.019	0.000	-0.003
S6	0.019	0.000	-0.003
S7	0.017	0.000	-0.002
S8	0.018	0.000	-0.002



Company	CIVITAS RESOURCES		
Well	ARISTOCRAT ANGUS 06-04-02		
Field	WATTENBERG		
County	WELD		
State	CO	Country	USA