

Project: Rio Blanco County, CO  
 Site: ELU A18 495 Pad  
 Well: ELU A18 FED 13D-7 495  
 Wellbore: OH  
 Design: Design #6  
 Latitude: 39.708927  
 Longitude: -108.103656  
 Ground Level: 8029.0  
 RKB=30' @ 8059.0usft (TBD)

PROJECT DETAILS: Rio Blanco County, CO

Geodetic System: Universal Transverse Mercator (US Survey Feet)  
 Datum: NAD 1927 - Western US  
 Ellipsoid: Clarke 1866  
 Zone: Zone 12N (114 W to 108 W)  
 System Datum: Mean Sea Level

REFERENCE INFORMATION

Vertical (TVD) Reference: RKB=30' @ 8059.0usft (TBD)  
 Section (VS) Reference: Slot - z 13D-7(0.0N, 0.0E)  
 Measured Depth Reference: RKB=30' @ 8059.0usft (TBD)  
 Calculation Method: Minimum Curvature

SECTION DETAILS

MD	Inc	Azi	TVD	+N/-S	+E/-W	Dleg	TFace	Vsect	Annotation
0.0	0.00	0.00	0.0	0.0	0.0	0.00	0.00	0.0	
200.0	0.00	0.00	200.0	0.0	0.0	0.00	0.00	0.0	Build 3° / 100'
769.5	17.09	344.87	761.1	81.4	-22.0	3.00	344.87	84.2	EOB @ 17.09° Inc. / 344.87° Azm
8565.3	17.09	344.87	8212.9	2292.5	-619.8	0.00	0.00	2372.9	Drop 3° / 100'
9134.9	0.00	0.00	8774.0	2373.8	-641.8	3.00	180.00	2457.1	EOD @ Vertical / Build 1.5° / 100'
8995.0	7186.6		9217.4	8856.5	-642.6	1.50	240.00	2456.9	EOB @ 1.24° Inc. / 240.00° Azm
8774.0	9134.9		13807.0	2373.8	-728.4	0.00	0.00	2435.3	TD @ 13807.0' MD / 13445.0' TVD

DESIGN TARGET DETAILS

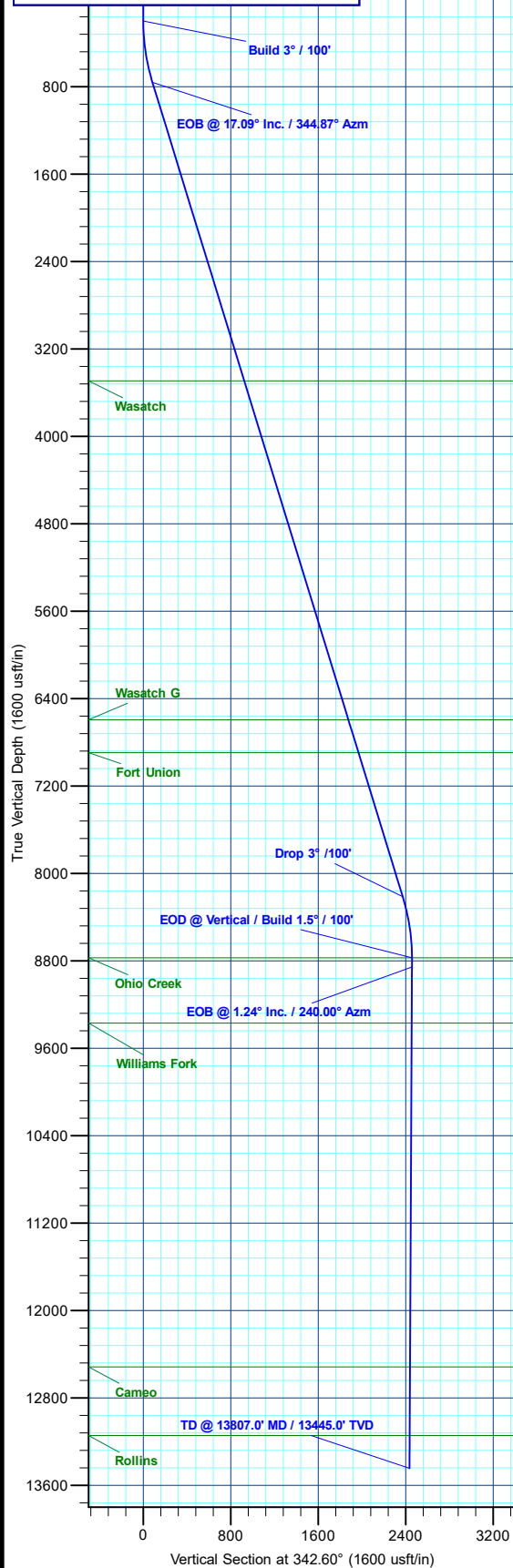
Name	TVD	+N/-S	+E/-W	Northing	Easting	Latitude	Longitude
z 13D-7 - OHCR	8774.0	2373.8	-641.8	14435570.47	2454341.44	39.715441	-108.105937
z 13D-7 - PBHL	13445.0	2323.8	-728.4	14435517.70	2454256.50	39.715304	-108.106245

WELL DETAILS: ELU A18 FED 13D-7 495

+N/-S	+E/-W	Ground Level	Northing	Easting	Latitude	Longitude
0.0	0.0	8029.0	14433218.60	2455059.60	39.708927	-108.103656 z 13D-7

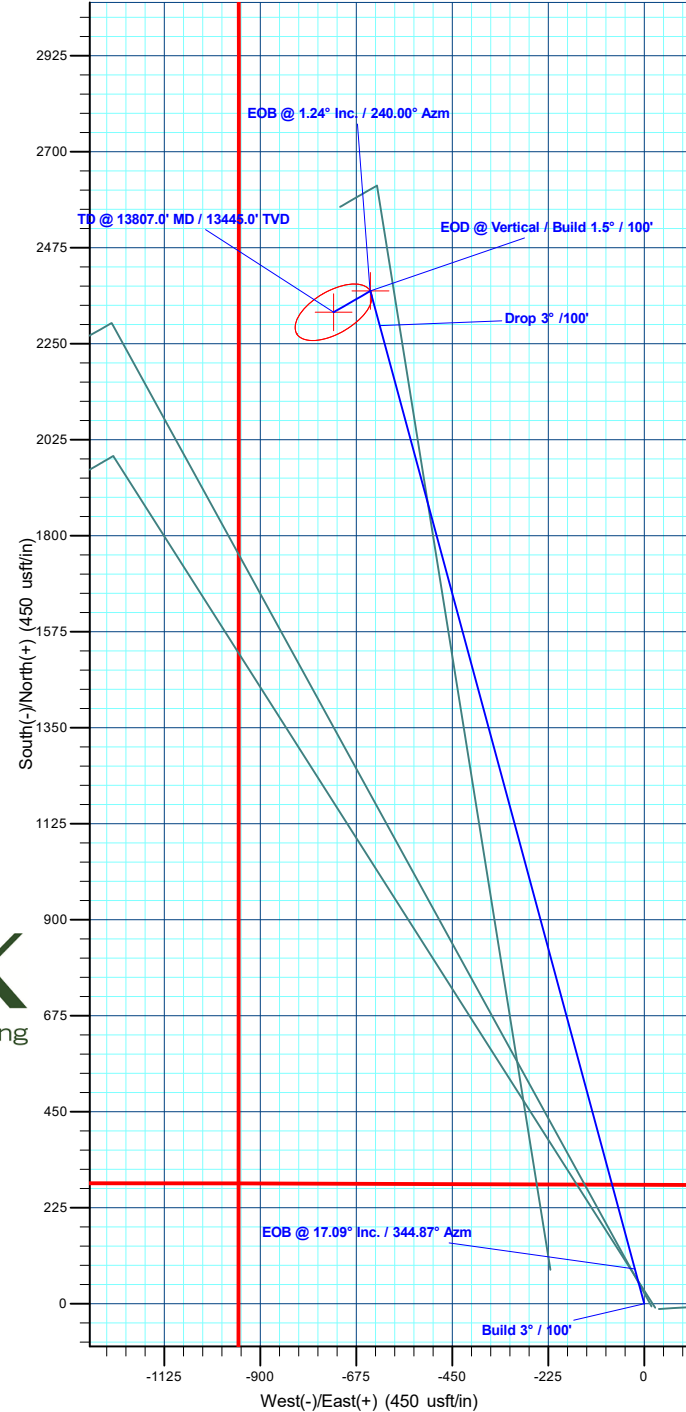
FORMATION TOP DETAILS

TVDPPath	MDPath	Formation
3494.0	3628.6	Wasatch
6995.0	6872.8	Wasatch G
8995.0	7186.6	Fort Union
8774.0	9134.9	Ohio Creek
9371.0	9732.0	Williams Fork
12517.0	12878.7	Cameo
13145.0	13506.9	Rollins



**T M** Azimuths to True North  
 Magnetic North: 9.07°

Magnetic Field  
 Strength: 50801.3nT  
 Dip Angle: 65.65°  
 Date: 7/15/2024  
 Model: HDGM2024



Plan: Design #6 (ELU A18 FED 13D-7 495/OH)

Created By: Will Jircik Date: 12:50, July 15 2024



## **Caerus Oil & Gas**

Rio Blanco County, CO

ELU A18 495 Pad

ELU A18 FED 13D-7 495 - Slot z 13D-7

OH

Plan: Design #6

## **KLX Well Planning Report**

15 July, 2024



<b>Database:</b>	KLXDirectional-AD	<b>Local Co-ordinate Reference:</b>	Well ELU A18 FED 13D-7 495 - Slot z 13D-7
<b>Company:</b>	Caerus Oil & Gas	<b>TVD Reference:</b>	RKB=30' @ 8059.0usft (TBD)
<b>Project:</b>	Rio Blanco County, CO	<b>MD Reference:</b>	RKB=30' @ 8059.0usft (TBD)
<b>Site:</b>	ELU A18 495 Pad	<b>North Reference:</b>	True
<b>Well:</b>	ELU A18 FED 13D-7 495	<b>Survey Calculation Method:</b>	Minimum Curvature
<b>Wellbore:</b>	OH		
<b>Design:</b>	Design #6		

<b>Project</b>	Rio Blanco County, CO		
<b>Map System:</b>	Universal Transverse Mercator (US Survey Fee	<b>System Datum:</b>	Mean Sea Level
<b>Geo Datum:</b>	NAD 1927 - Western US		
<b>Map Zone:</b>	Zone 12N (114 W to 108 W)		

<b>Site</b>	ELU A18 495 Pad				
<b>Site Position:</b>		<b>Northing:</b>	14,433,285.62 usft	<b>Latitude:</b>	39.709129
<b>From:</b>	Map	<b>Easting:</b>	2,454,854.21 usft	<b>Longitude:</b>	-108.104378
<b>Position Uncertainty:</b>	0.0 usft	<b>Slot Radius:</b>	13-3/16 "	<b>Grid Convergence:</b>	1.85 °

<b>Well</b>	ELU A18 FED 13D-7 495 - Slot z 13D-7					
<b>Well Position</b>	<b>+N/-S</b>	-73.6 usft	<b>Northing:</b>	14,433,218.60 usft	<b>Latitude:</b>	39.708927
	<b>+E/-W</b>	203.1 usft	<b>Easting:</b>	2,455,059.60 usft	<b>Longitude:</b>	-108.103657
<b>Position Uncertainty</b>		0.0 usft	<b>Wellhead Elevation:</b>		<b>Ground Level:</b>	8,029.0 usft

<b>Wellbore</b>	OH
-----------------	----

Magnetics	Model Name	Sample Date	Declination (°)	Dip Angle (°)	Field Strength (nT)
	HDGM2024	7/15/2024	9.07	65.65	50,801.30000000

<b>Design</b>	Design #6
---------------	-----------

<b>Audit Notes:</b>	
<b>Version:</b>	<b>Phase:</b> PLAN <b>Tie On Depth:</b> 0.0
<b>Vertical Section:</b>	<b>Depth From (TVD) (usft)</b> <b>+N/-S (usft)</b> <b>+E/-W (usft)</b> <b>Direction (°)</b>
	0.0 0.0 0.0 342.60

Plan Sections										
Measured Depth (usft)	Inclination (°)	Azimuth (°)	Vertical Depth (usft)	+N/-S (usft)	+E/-W (usft)	Dogleg Rate (°/100usft)	Build Rate (°/100usft)	Turn Rate (°/100usft)	TFO (°)	Target
0.0	0.00	0.00	0.0	0.0	0.0	0.00	0.00	0.00	0.00	
200.0	0.00	0.00	200.0	0.0	0.0	0.00	0.00	0.00	0.00	
769.5	17.09	344.87	761.1	81.4	-22.0	3.00	3.00	0.00	344.87	
8,565.3	17.09	344.87	8,212.9	2,292.5	-619.8	0.00	0.00	0.00	0.00	
9,134.9	0.00	0.00	8,774.0	2,373.8	-641.8	3.00	-3.00	0.00	180.00	z 13D-7 - OHCR
9,217.4	1.24	240.00	8,856.5	2,373.4	-642.6	1.50	1.50	-145.47	240.00	
13,807.0	1.24	240.00	13,445.0	2,323.8	-728.4	0.00	0.00	0.00	0.00	z 13D-7 - PBHL

<b>Database:</b>	KLXDirectional-AD	<b>Local Co-ordinate Reference:</b>	Well ELU A18 FED 13D-7 495 - Slot z 13D-7
<b>Company:</b>	Caerus Oil & Gas	<b>TVD Reference:</b>	RKB=30' @ 8059.0usft (TBD)
<b>Project:</b>	Rio Blanco County, CO	<b>MD Reference:</b>	RKB=30' @ 8059.0usft (TBD)
<b>Site:</b>	ELU A18 495 Pad	<b>North Reference:</b>	True
<b>Well:</b>	ELU A18 FED 13D-7 495	<b>Survey Calculation Method:</b>	Minimum Curvature
<b>Wellbore:</b>	OH		
<b>Design:</b>	Design #6		

Planned Survey									
Measured Depth (usft)	Inclination (°)	Azimuth (°)	Vertical Depth (usft)	+N/-S (usft)	+E/-W (usft)	Vertical Section (usft)	Dogleg Rate (°/100usft)	Build Rate (°/100usft)	Turn Rate (°/100usft)
0.0	0.00	0.00	0.0	0.0	0.0	0.0	0.00	0.00	0.00
100.0	0.00	0.00	100.0	0.0	0.0	0.0	0.00	0.00	0.00
<b>Build 3° / 100'</b>									
200.0	0.00	0.00	200.0	0.0	0.0	0.0	0.00	0.00	0.00
300.0	3.00	344.87	300.0	2.5	-0.7	2.6	3.00	3.00	0.00
400.0	6.00	344.87	399.6	10.1	-2.7	10.5	3.00	3.00	0.00
500.0	9.00	344.87	498.8	22.7	-6.1	23.5	3.00	3.00	0.00
600.0	12.00	344.87	597.1	40.3	-10.9	41.7	3.00	3.00	0.00
700.0	15.00	344.87	694.3	62.8	-17.0	65.0	3.00	3.00	0.00
<b>EOB @ 17.09° Inc. / 344.87° Azm</b>									
769.5	17.09	344.87	761.1	81.4	-22.0	84.2	3.00	3.00	0.00
800.0	17.09	344.87	790.3	90.0	-24.3	93.2	0.00	0.00	0.00
900.0	17.09	344.87	885.8	118.4	-32.0	122.5	0.00	0.00	0.00
1,000.0	17.09	344.87	981.4	146.7	-39.7	151.9	0.00	0.00	0.00
1,100.0	17.09	344.87	1,077.0	175.1	-47.3	181.2	0.00	0.00	0.00
1,200.0	17.09	344.87	1,172.6	203.5	-55.0	210.6	0.00	0.00	0.00
1,300.0	17.09	344.87	1,268.2	231.8	-62.7	240.0	0.00	0.00	0.00
1,400.0	17.09	344.87	1,363.8	260.2	-70.3	269.3	0.00	0.00	0.00
1,500.0	17.09	344.87	1,459.4	288.6	-78.0	298.7	0.00	0.00	0.00
1,600.0	17.09	344.87	1,554.9	316.9	-85.7	328.0	0.00	0.00	0.00
1,700.0	17.09	344.87	1,650.5	345.3	-93.3	357.4	0.00	0.00	0.00
1,800.0	17.09	344.87	1,746.1	373.6	-101.0	386.7	0.00	0.00	0.00
1,900.0	17.09	344.87	1,841.7	402.0	-108.7	416.1	0.00	0.00	0.00
2,000.0	17.09	344.87	1,937.3	430.4	-116.4	445.5	0.00	0.00	0.00
2,100.0	17.09	344.87	2,032.9	458.7	-124.0	474.8	0.00	0.00	0.00
2,200.0	17.09	344.87	2,128.5	487.1	-131.7	504.2	0.00	0.00	0.00
2,300.0	17.09	344.87	2,224.0	515.5	-139.4	533.5	0.00	0.00	0.00
2,400.0	17.09	344.87	2,319.6	543.8	-147.0	562.9	0.00	0.00	0.00
2,500.0	17.09	344.87	2,415.2	572.2	-154.7	592.3	0.00	0.00	0.00
2,600.0	17.09	344.87	2,510.8	600.5	-162.4	621.6	0.00	0.00	0.00
2,700.0	17.09	344.87	2,606.4	628.9	-170.0	651.0	0.00	0.00	0.00
2,800.0	17.09	344.87	2,702.0	657.3	-177.7	680.3	0.00	0.00	0.00
2,900.0	17.09	344.87	2,797.6	685.6	-185.4	709.7	0.00	0.00	0.00
3,000.0	17.09	344.87	2,893.2	714.0	-193.0	739.0	0.00	0.00	0.00
3,100.0	17.09	344.87	2,988.7	742.4	-200.7	768.4	0.00	0.00	0.00
3,200.0	17.09	344.87	3,084.3	770.7	-208.4	797.8	0.00	0.00	0.00
3,300.0	17.09	344.87	3,179.9	799.1	-216.0	827.1	0.00	0.00	0.00
3,400.0	17.09	344.87	3,275.5	827.4	-223.7	856.5	0.00	0.00	0.00
3,500.0	17.09	344.87	3,371.1	855.8	-231.4	885.8	0.00	0.00	0.00
3,600.0	17.09	344.87	3,466.7	884.2	-239.0	915.2	0.00	0.00	0.00
<b>Wasatch</b>									
3,628.6	17.09	344.87	3,494.0	892.3	-241.2	923.6	0.00	0.00	0.00
3,700.0	17.09	344.87	3,562.3	912.5	-246.7	944.5	0.00	0.00	0.00
3,800.0	17.09	344.87	3,657.8	940.9	-254.4	973.9	0.00	0.00	0.00
3,900.0	17.09	344.87	3,753.4	969.3	-262.0	1,003.3	0.00	0.00	0.00
4,000.0	17.09	344.87	3,849.0	997.6	-269.7	1,032.6	0.00	0.00	0.00
4,100.0	17.09	344.87	3,944.6	1,026.0	-277.4	1,062.0	0.00	0.00	0.00
4,200.0	17.09	344.87	4,040.2	1,054.3	-285.1	1,091.3	0.00	0.00	0.00
4,300.0	17.09	344.87	4,135.8	1,082.7	-292.7	1,120.7	0.00	0.00	0.00
4,400.0	17.09	344.87	4,231.4	1,111.1	-300.4	1,150.1	0.00	0.00	0.00
4,500.0	17.09	344.87	4,326.9	1,139.4	-308.1	1,179.4	0.00	0.00	0.00
4,600.0	17.09	344.87	4,422.5	1,167.8	-315.7	1,208.8	0.00	0.00	0.00
4,700.0	17.09	344.87	4,518.1	1,196.2	-323.4	1,238.1	0.00	0.00	0.00

<b>Database:</b>	KLXDirectional-AD	<b>Local Co-ordinate Reference:</b>	Well ELU A18 FED 13D-7 495 - Slot z 13D-7
<b>Company:</b>	Caerus Oil & Gas	<b>TVD Reference:</b>	RKB=30' @ 8059.0usft (TBD)
<b>Project:</b>	Rio Blanco County, CO	<b>MD Reference:</b>	RKB=30' @ 8059.0usft (TBD)
<b>Site:</b>	ELU A18 495 Pad	<b>North Reference:</b>	True
<b>Well:</b>	ELU A18 FED 13D-7 495	<b>Survey Calculation Method:</b>	Minimum Curvature
<b>Wellbore:</b>	OH		
<b>Design:</b>	Design #6		

Planned Survey									
Measured Depth (usft)	Inclination (°)	Azimuth (°)	Vertical Depth (usft)	+N/-S (usft)	+E/-W (usft)	Vertical Section (usft)	Dogleg Rate (°/100usft)	Build Rate (°/100usft)	Turn Rate (°/100usft)
4,800.0	17.09	344.87	4,613.7	1,224.5	-331.1	1,267.5	0.00	0.00	0.00
4,900.0	17.09	344.87	4,709.3	1,252.9	-338.7	1,296.8	0.00	0.00	0.00
5,000.0	17.09	344.87	4,804.9	1,281.2	-346.4	1,326.2	0.00	0.00	0.00
5,100.0	17.09	344.87	4,900.5	1,309.6	-354.1	1,355.6	0.00	0.00	0.00
5,200.0	17.09	344.87	4,996.1	1,338.0	-361.7	1,384.9	0.00	0.00	0.00
5,300.0	17.09	344.87	5,091.6	1,366.3	-369.4	1,414.3	0.00	0.00	0.00
5,400.0	17.09	344.87	5,187.2	1,394.7	-377.1	1,443.6	0.00	0.00	0.00
5,500.0	17.09	344.87	5,282.8	1,423.1	-384.7	1,473.0	0.00	0.00	0.00
5,600.0	17.09	344.87	5,378.4	1,451.4	-392.4	1,502.3	0.00	0.00	0.00
5,700.0	17.09	344.87	5,474.0	1,479.8	-400.1	1,531.7	0.00	0.00	0.00
5,800.0	17.09	344.87	5,569.6	1,508.1	-407.7	1,561.1	0.00	0.00	0.00
5,900.0	17.09	344.87	5,665.2	1,536.5	-415.4	1,590.4	0.00	0.00	0.00
6,000.0	17.09	344.87	5,760.7	1,564.9	-423.1	1,619.8	0.00	0.00	0.00
6,100.0	17.09	344.87	5,856.3	1,593.2	-430.7	1,649.1	0.00	0.00	0.00
6,200.0	17.09	344.87	5,951.9	1,621.6	-438.4	1,678.5	0.00	0.00	0.00
6,300.0	17.09	344.87	6,047.5	1,650.0	-446.1	1,707.9	0.00	0.00	0.00
6,400.0	17.09	344.87	6,143.1	1,678.3	-453.8	1,737.2	0.00	0.00	0.00
6,500.0	17.09	344.87	6,238.7	1,706.7	-461.4	1,766.6	0.00	0.00	0.00
6,600.0	17.09	344.87	6,334.3	1,735.0	-469.1	1,795.9	0.00	0.00	0.00
6,700.0	17.09	344.87	6,429.8	1,763.4	-476.8	1,825.3	0.00	0.00	0.00
6,800.0	17.09	344.87	6,525.4	1,791.8	-484.4	1,854.6	0.00	0.00	0.00
<b>Wasatch G</b>									
6,872.8	17.09	344.87	6,595.0	1,812.4	-490.0	1,876.0	0.00	0.00	0.00
6,900.0	17.09	344.87	6,621.0	1,820.1	-492.1	1,884.0	0.00	0.00	0.00
7,000.0	17.09	344.87	6,716.6	1,848.5	-499.8	1,913.4	0.00	0.00	0.00
7,100.0	17.09	344.87	6,812.2	1,876.9	-507.4	1,942.7	0.00	0.00	0.00
<b>Fort Union</b>									
7,186.6	17.09	344.87	6,895.0	1,901.4	-514.1	1,968.1	0.00	0.00	0.00
7,200.0	17.09	344.87	6,907.8	1,905.2	-515.1	1,972.1	0.00	0.00	0.00
7,300.0	17.09	344.87	7,003.4	1,933.6	-522.8	2,001.4	0.00	0.00	0.00
7,400.0	17.09	344.87	7,099.0	1,961.9	-530.4	2,030.8	0.00	0.00	0.00
7,500.0	17.09	344.87	7,194.5	1,990.3	-538.1	2,060.1	0.00	0.00	0.00
7,600.0	17.09	344.87	7,290.1	2,018.7	-545.8	2,089.5	0.00	0.00	0.00
7,700.0	17.09	344.87	7,385.7	2,047.0	-553.4	2,118.9	0.00	0.00	0.00
7,800.0	17.09	344.87	7,481.3	2,075.4	-561.1	2,148.2	0.00	0.00	0.00
7,900.0	17.09	344.87	7,576.9	2,103.8	-568.8	2,177.6	0.00	0.00	0.00
8,000.0	17.09	344.87	7,672.5	2,132.1	-576.4	2,206.9	0.00	0.00	0.00
8,100.0	17.09	344.87	7,768.1	2,160.5	-584.1	2,236.3	0.00	0.00	0.00
8,200.0	17.09	344.87	7,863.6	2,188.9	-591.8	2,265.7	0.00	0.00	0.00
8,300.0	17.09	344.87	7,959.2	2,217.2	-599.4	2,295.0	0.00	0.00	0.00
8,400.0	17.09	344.87	8,054.8	2,245.6	-607.1	2,324.4	0.00	0.00	0.00
8,500.0	17.09	344.87	8,150.4	2,273.9	-614.8	2,353.7	0.00	0.00	0.00
<b>Drop 3° /100'</b>									
8,565.3	17.09	344.87	8,212.9	2,292.5	-619.8	2,372.9	0.00	0.00	0.00
8,600.0	16.05	344.87	8,246.1	2,302.0	-622.4	2,382.8	3.00	-3.00	0.00
8,700.0	13.05	344.87	8,342.9	2,326.3	-628.9	2,407.9	3.00	-3.00	0.00
8,800.0	10.05	344.87	8,440.8	2,345.6	-634.2	2,427.9	3.00	-3.00	0.00
8,900.0	7.05	344.87	8,539.7	2,359.9	-638.0	2,442.7	3.00	-3.00	0.00
9,000.0	4.05	344.87	8,639.2	2,369.2	-640.6	2,452.4	3.00	-3.00	0.00
9,100.0	1.05	344.87	8,739.1	2,373.5	-641.7	2,456.8	3.00	-3.00	0.00
<b>EOD @ Vertical / Build 1.5° / 100' - Ohio Creek</b>									
9,134.9	0.00	0.00	8,774.0	2,373.8	-641.8	2,457.1	3.00	-3.00	0.00
9,200.0	0.98	240.00	8,839.1	2,373.6	-642.3	2,457.0	1.50	1.50	0.00
<b>EOB @ 1.24° Inc. / 240.00° Azm</b>									

<b>Database:</b>	KLXDirectional-AD	<b>Local Co-ordinate Reference:</b>	Well ELU A18 FED 13D-7 495 - Slot z 13D-7
<b>Company:</b>	Caerus Oil & Gas	<b>TVD Reference:</b>	RKB=30' @ 8059.0usft (TBD)
<b>Project:</b>	Rio Blanco County, CO	<b>MD Reference:</b>	RKB=30' @ 8059.0usft (TBD)
<b>Site:</b>	ELU A18 495 Pad	<b>North Reference:</b>	True
<b>Well:</b>	ELU A18 FED 13D-7 495	<b>Survey Calculation Method:</b>	Minimum Curvature
<b>Wellbore:</b>	OH		
<b>Design:</b>	Design #6		

Planned Survey										
Measured Depth (usft)	Inclination (°)	Azimuth (°)	Vertical Depth (usft)	+N/-S (usft)	+E/-W (usft)	Vertical Section (usft)	Dogleg Rate (°/100usft)	Build Rate (°/100usft)	Turn Rate (°/100usft)	
9,217.4	1.24	240.00	8,856.5	2,373.4	-642.6	2,456.9	1.50	1.50	0.00	
9,300.0	1.24	240.00	8,939.1	2,372.5	-644.1	2,456.6	0.00	0.00	0.00	
9,400.0	1.24	240.00	9,039.1	2,371.4	-646.0	2,456.1	0.00	0.00	0.00	
9,500.0	1.24	240.00	9,139.0	2,370.3	-647.9	2,455.6	0.00	0.00	0.00	
9,600.0	1.24	240.00	9,239.0	2,369.3	-649.7	2,455.1	0.00	0.00	0.00	
9,700.0	1.24	240.00	9,339.0	2,368.2	-651.6	2,454.7	0.00	0.00	0.00	
<b>Williams Fork</b>										
9,732.0	1.24	240.00	9,371.0	2,367.8	-652.2	2,454.5	0.00	0.00	0.00	
9,800.0	1.24	240.00	9,439.0	2,367.1	-653.5	2,454.2	0.00	0.00	0.00	
9,900.0	1.24	240.00	9,538.9	2,366.0	-655.3	2,453.7	0.00	0.00	0.00	
10,000.0	1.24	240.00	9,638.9	2,364.9	-657.2	2,453.3	0.00	0.00	0.00	
10,100.0	1.24	240.00	9,738.9	2,363.9	-659.1	2,452.8	0.00	0.00	0.00	
10,200.0	1.24	240.00	9,838.9	2,362.8	-660.9	2,452.3	0.00	0.00	0.00	
10,300.0	1.24	240.00	9,938.9	2,361.7	-662.8	2,451.8	0.00	0.00	0.00	
10,400.0	1.24	240.00	10,038.8	2,360.6	-664.7	2,451.4	0.00	0.00	0.00	
10,500.0	1.24	240.00	10,138.8	2,359.6	-666.6	2,450.9	0.00	0.00	0.00	
10,600.0	1.24	240.00	10,238.8	2,358.5	-668.4	2,450.4	0.00	0.00	0.00	
10,700.0	1.24	240.00	10,338.8	2,357.4	-670.3	2,450.0	0.00	0.00	0.00	
10,800.0	1.24	240.00	10,438.7	2,356.3	-672.2	2,449.5	0.00	0.00	0.00	
10,900.0	1.24	240.00	10,538.7	2,355.2	-674.0	2,449.0	0.00	0.00	0.00	
11,000.0	1.24	240.00	10,638.7	2,354.2	-675.9	2,448.5	0.00	0.00	0.00	
11,100.0	1.24	240.00	10,738.7	2,353.1	-677.8	2,448.1	0.00	0.00	0.00	
11,200.0	1.24	240.00	10,838.6	2,352.0	-679.6	2,447.6	0.00	0.00	0.00	
11,300.0	1.24	240.00	10,938.6	2,350.9	-681.5	2,447.1	0.00	0.00	0.00	
11,400.0	1.24	240.00	11,038.6	2,349.8	-683.4	2,446.7	0.00	0.00	0.00	
11,500.0	1.24	240.00	11,138.6	2,348.8	-685.3	2,446.2	0.00	0.00	0.00	
11,600.0	1.24	240.00	11,238.6	2,347.7	-687.1	2,445.7	0.00	0.00	0.00	
11,700.0	1.24	240.00	11,338.5	2,346.6	-689.0	2,445.3	0.00	0.00	0.00	
11,800.0	1.24	240.00	11,438.5	2,345.5	-690.9	2,444.8	0.00	0.00	0.00	
11,900.0	1.24	240.00	11,538.5	2,344.4	-692.7	2,444.3	0.00	0.00	0.00	
12,000.0	1.24	240.00	11,638.5	2,343.4	-694.6	2,443.8	0.00	0.00	0.00	
12,100.0	1.24	240.00	11,738.4	2,342.3	-696.5	2,443.4	0.00	0.00	0.00	
12,200.0	1.24	240.00	11,838.4	2,341.2	-698.3	2,442.9	0.00	0.00	0.00	
12,300.0	1.24	240.00	11,938.4	2,340.1	-700.2	2,442.4	0.00	0.00	0.00	
12,400.0	1.24	240.00	12,038.4	2,339.0	-702.1	2,442.0	0.00	0.00	0.00	
12,500.0	1.24	240.00	12,138.3	2,338.0	-704.0	2,441.5	0.00	0.00	0.00	
12,600.0	1.24	240.00	12,238.3	2,336.9	-705.8	2,441.0	0.00	0.00	0.00	
12,700.0	1.24	240.00	12,338.3	2,335.8	-707.7	2,440.5	0.00	0.00	0.00	
12,800.0	1.24	240.00	12,438.3	2,334.7	-709.6	2,440.1	0.00	0.00	0.00	
<b>Cameo</b>										
12,878.7	1.24	240.00	12,517.0	2,333.9	-711.0	2,439.7	0.00	0.00	0.00	
12,900.0	1.24	240.00	12,538.2	2,333.6	-711.4	2,439.6	0.00	0.00	0.00	
13,000.0	1.24	240.00	12,638.2	2,332.6	-713.3	2,439.1	0.00	0.00	0.00	
13,100.0	1.24	240.00	12,738.2	2,331.5	-715.2	2,438.7	0.00	0.00	0.00	
13,200.0	1.24	240.00	12,838.2	2,330.4	-717.0	2,438.2	0.00	0.00	0.00	
13,300.0	1.24	240.00	12,938.2	2,329.3	-718.9	2,437.7	0.00	0.00	0.00	
13,400.0	1.24	240.00	13,038.1	2,328.2	-720.8	2,437.2	0.00	0.00	0.00	
13,500.0	1.24	240.00	13,138.1	2,327.2	-722.7	2,436.8	0.00	0.00	0.00	
<b>Rollins</b>										
13,506.9	1.24	240.00	13,145.0	2,327.1	-722.8	2,436.7	0.00	0.00	0.00	
13,600.0	1.24	240.00	13,238.1	2,326.1	-724.5	2,436.3	0.00	0.00	0.00	
13,700.0	1.24	240.00	13,338.1	2,325.0	-726.4	2,435.8	0.00	0.00	0.00	
<b>TD @ 13807.0' MD / 13445.0' TVD</b>										

<b>Database:</b>	KLXDirectional-AD	<b>Local Co-ordinate Reference:</b>	Well ELU A18 FED 13D-7 495 - Slot z 13D-7
<b>Company:</b>	Caerus Oil & Gas	<b>TVD Reference:</b>	RKB=30' @ 8059.0usft (TBD)
<b>Project:</b>	Rio Blanco County, CO	<b>MD Reference:</b>	RKB=30' @ 8059.0usft (TBD)
<b>Site:</b>	ELU A18 495 Pad	<b>North Reference:</b>	True
<b>Well:</b>	ELU A18 FED 13D-7 495	<b>Survey Calculation Method:</b>	Minimum Curvature
<b>Wellbore:</b>	OH		
<b>Design:</b>	Design #6		

Planned Survey									
Measured Depth (usft)	Inclination (°)	Azimuth (°)	Vertical Depth (usft)	+N/-S (usft)	+E/-W (usft)	Vertical Section (usft)	Dogleg Rate (°/100usft)	Build Rate (°/100usft)	Turn Rate (°/100usft)
13,807.0	1.24	240.00	13,445.0	2,323.8	-728.4	2,435.3	0.00	0.00	0.00

Design Targets									
Target Name	Dip Angle (°)	Dip Dir. (°)	TVD (usft)	+N/-S (usft)	+E/-W (usft)	Northing (usft)	Easting (usft)	Latitude	Longitude
z 13D-7 - OHCR - hit/miss target - Shape	0.00	0.00	8,774.0	2,373.8	-641.8	14,435,570.47	2,454,341.45	39.715442	-108.105937
- plan hits target center - Point									
z 13D-7 - PBHL - plan hits target center - Ellipse (radii L100.0 W50.0 on 240.00 azi)	0.00	0.00	13,445.0	2,323.8	-728.4	14,435,517.70	2,454,256.50	39.715304	-108.106245

Formations						
Measured Depth (usft)	Vertical Depth (usft)	Name	Lithology	Dip (°)	Dip Direction (°)	
3,628.6	3,494.0	Wasatch				
6,872.8	6,595.0	Wasatch G				
7,186.6	6,895.0	Fort Union				
9,134.9	8,774.0	Ohio Creek				
9,732.0	9,371.0	Williams Fork				
12,878.7	12,517.0	Cameo				
13,506.9	13,145.0	Rollins				

Plan Annotations				
Measured Depth (usft)	Vertical Depth (usft)	+N/-S (usft)	+E/-W (usft)	Comment
200.0	200.0	0.0	0.0	Build 3° / 100'
769.5	761.1	81.4	-22.0	EOB @ 17.09° Inc. / 344.87° Azm
8,565.3	8,212.9	2,292.5	-619.8	Drop 3° / 100'
9,134.9	8,774.0	2,373.8	-641.8	EOD @ Vertical / Build 1.5° / 100'
9,217.4	8,856.5	2,373.4	-642.6	EOB @ 1.24° Inc. / 240.00° Azm
13,807.0	13,445.0	2,323.8	-728.4	TD @ 13807.0' MD / 13445.0' TVD