



P&A Wellbore For State

Well Name: Hen 02N

Horizontal, Original Hole, 7/17/2024 1:24:46 PM		Well Header						
MD (ftKB)	Vertical schematic (actual)	API	Division	District	Well Config			
		05123517950000		Evans	Horizontal			
		KB-Grd (ft)	Spud Date	Abandon Date	Well Sub-Status	Probl...		
		28.50	8/9/2023			No		
		Comment						
		Wellbore Sections						
		Section Des	Size (in)	Act Top (ftKB)	Act Btm (ftKB)			
		Surface	13 1/2	28.5	1,758.5			
		Production	8 1/2	1,758.5	15,174.0			
		Casing Strings						
		Csg Des	Run Date	OD (in)	Wt/Len (lb/ft)	Grade	Top (ftKB)	Set Depth (ftKB)
		Surface	6/12/2023	9 5/8	36.00	J-55	28.5	1,748.5
		Production	8/11/2023	5 1/2	20.00	P-110	28.5	15,160.0
		Cement						
		Des	Start Date	Top (ftKB)	Btm (ftKB)			
		Surface	6/12/2023	28.5	1,748.5			
		Production Casing Cement	8/12/2023	1,869.0	15,160.0			
		Zone Statuses						
		Zone Name	Status Date	Status	Fluid Type	Job	Prod Method	
		Perforation Data						
		Linked Zone	Explosive Type	Entered Shot Total	Top (ftKB)	Btm (ftKB)	Date	
		Niobrara, Original Hole	RDX	4	7,700	7,701	5/20/2024	
		Niobrara, Original Hole	RDX	4	7,746	7,747	5/20/2024	
		Niobrara, Original Hole	RDX	4	7,793	7,794	5/20/2024	
		Niobrara, Original Hole	RDX	4	7,839	7,840	5/20/2024	
		Niobrara, Original Hole	RDX	5	7,885	7,886	5/20/2024	
		Niobrara, Original Hole	RDX	5	7,936	7,937	5/20/2024	
		Niobrara, Original Hole	RDX	5	7,980	7,981	5/20/2024	
		Niobrara, Original Hole	RDX	5	8,025	8,026	5/20/2024	
		Niobrara, Original Hole	RDX	4	8,070	8,071	5/20/2024	
		Niobrara, Original Hole	RDX	4	8,117	8,118	5/20/2024	
		Niobrara, Original Hole	RDX	4	8,163	8,164	5/20/2024	
		Niobrara, Original Hole	RDX	4	8,209	8,210	5/20/2024	
		Niobrara, Original Hole	RDX	5	8,256	8,257	5/20/2024	
		Niobrara, Original Hole	RDX	5	8,302	8,303	5/20/2024	
		Niobrara, Original Hole	RDX	5	8,348	8,349	5/20/2024	
		Niobrara, Original Hole	RDX	5	8,395	8,396	5/20/2024	
		Niobrara, Original Hole	RDX	4	8,442	8,443	5/19/2024	
		Niobrara, Original Hole	RDX	4	8,488	8,489	5/19/2024	
		Niobrara, Original Hole	RDX	4	8,535	8,536	5/19/2024	
		Niobrara, Original Hole	RDX	4	8,581	8,582	5/19/2024	
		Niobrara, Original Hole	RDX	5	8,627	8,628	5/19/2024	
		Niobrara, Original Hole	RDX	5	8,674	8,675	5/19/2024	
		Niobrara, Original Hole	RDX	5	8,720	8,721	5/19/2024	
		Niobrara, Original Hole	RDX	5	8,766	8,767	5/19/2024	
		Niobrara, Original Hole	RDX	4	8,813	8,814	5/19/2024	
		Niobrara, Original Hole	RDX	4	8,859	8,860	5/19/2024	
		Niobrara, Original Hole	RDX	4	8,906	8,907	5/19/2024	
		Niobrara, Original Hole	RDX	4	8,954	8,955	5/19/2024	
		Niobrara, Original Hole	RDX	5	8,999	9,000	5/19/2024	
		Niobrara, Original Hole	RDX	5	9,045	9,046	5/19/2024	
		Niobrara, Original Hole	RDX	5	9,091	9,092	5/19/2024	
		Niobrara, Original Hole	RDX	5	9,137	9,138	5/19/2024	
		Niobrara, Original Hole	RDX	4	9,184	9,185	5/19/2024	
		Niobrara, Original Hole	RDX	4	9,230	9,231	5/19/2024	
		Niobrara, Original Hole	RDX	4	9,277	9,278	5/19/2024	
		Niobrara, Original Hole	RDX	4	9,323	9,324	5/19/2024	



P&A Wellbore For State

Horizontal, Original Hole, 7/17/2024 1:24:47 PM		Perforation Data					
MD (ftKB)	Vertical schematic (actual)	Linked Zone	Explosive Type	Entered Shot Total	Depth (ftKB)		Date
					Top	Btm	
1,748.4		Niobrara, Original Hole	RDX	5	9,369	9,370	5/19/2024
7,061.0		Niobrara, Original Hole	RDX	5	9,416	9,417	5/19/2024
7,703.4		Niobrara, Original Hole	RDX	5	9,462	9,463	5/19/2024
7,884.8		Niobrara, Original Hole	RDX	5	9,508	9,509	5/19/2024
8,069.9		Niobrara, Original Hole	RDX	4	9,555	9,556	5/18/2024
8,255.9		Niobrara, Original Hole	RDX	4	9,601	9,602	5/18/2024
8,397.0		Niobrara, Original Hole	RDX	4	9,647	9,648	5/18/2024
8,582.0		Niobrara, Original Hole	RDX	4	9,694	9,695	5/18/2024
8,767.1		Niobrara, Original Hole	RDX	5	9,740	9,741	5/18/2024
8,955.1		Niobrara, Original Hole	RDX	5	9,787	9,788	5/18/2024
9,138.1		Niobrara, Original Hole	RDX	5	9,833	9,834	5/18/2024
9,324.1		Niobrara, Original Hole	RDX	5	9,880	9,881	5/18/2024
9,508.9		Niobrara, Original Hole	RDX	4	9,926	9,927	5/18/2024
9,694.9		Niobrara, Original Hole	RDX	4	9,972	9,973	5/18/2024
9,880.9		Niobrara, Original Hole	RDX	4	10,018	10,019	5/18/2024
10,065.9		Niobrara, Original Hole	RDX	4	10,065	10,066	5/18/2024
10,251.0		Niobrara, Original Hole	RDX	4	10,111	10,112	5/18/2024
10,437.0		Niobrara, Original Hole	RDX	5	10,158	10,159	5/18/2024
10,622.0		Niobrara, Original Hole	RDX	5	10,204	10,205	5/18/2024
10,805.1		Niobrara, Original Hole	RDX	5	10,250	10,251	5/18/2024
10,993.1		Niobrara, Original Hole	RDX	4	10,297	10,298	5/18/2024
11,179.1		Niobrara, Original Hole	RDX	4	10,343	10,344	5/18/2024
11,363.8		Niobrara, Original Hole	RDX	4	10,389	10,390	5/18/2024
11,503.0		Niobrara, Original Hole	RDX	4	10,436	10,437	5/18/2024
11,689.0		Niobrara, Original Hole	RDX	5	10,482	10,483	5/18/2024
11,874.0		Niobrara, Original Hole	RDX	5	10,529	10,530	5/18/2024
12,060.0		Niobrara, Original Hole	RDX	5	10,575	10,576	5/18/2024
12,245.1		Niobrara, Original Hole	RDX	5	10,621	10,622	5/18/2024
12,431.1		Niobrara, Original Hole	RDX	4	10,668	10,669	5/17/2024
12,616.1		Niobrara, Original Hole	RDX	4	10,714	10,715	5/17/2024
12,801.8		Niobrara, Original Hole	RDX	4	10,760	10,761	5/17/2024
12,986.9		Niobrara, Original Hole	RDX	4	10,804	10,805	5/17/2024
13,172.9		Niobrara, Original Hole	RDX	5	10,854	10,855	5/17/2024
13,357.9		Niobrara, Original Hole	RDX	5	10,899	10,900	5/17/2024
13,544.0		Niobrara, Original Hole	RDX	5	10,946	10,947	5/17/2024
13,729.0		Niobrara, Original Hole	RDX	5	10,992	10,993	5/17/2024
13,914.0		Niobrara, Original Hole	RDX	4	11,039	11,040	5/17/2024
14,100.1		Niobrara, Original Hole	RDX	4	11,085	11,086	5/17/2024
14,285.1		Niobrara, Original Hole	RDX	4	11,131	11,132	5/17/2024
14,471.1		Niobrara, Original Hole	RDX	4	11,178	11,179	5/17/2024
14,655.8		Niobrara, Original Hole	RDX	5	11,224	11,225	5/17/2024
14,795.9		Niobrara, Original Hole	RDX	5	11,270	11,271	5/17/2024
14,981.0		Niobrara, Original Hole	RDX	5	11,317	11,318	5/17/2024
15,124.0		Niobrara, Original Hole	RDX	5	11,363	11,364	5/17/2024
		Niobrara, Original Hole	RDX	4	11,410	11,411	5/16/2024
		Niobrara, Original Hole	RDX	4	11,456	11,457	5/16/2024
		Niobrara, Original Hole	RDX	4	11,502	11,503	5/16/2024
		Niobrara, Original Hole	RDX	4	11,549	11,550	5/16/2024
		Niobrara, Original Hole	RDX	5	11,595	11,596	5/16/2024
		Niobrara, Original Hole	RDX	5	11,641	11,642	5/16/2024
		Niobrara, Original Hole	RDX	5	11,688	11,689	5/16/2024
		Niobrara, Original Hole	RDX	5	11,734	11,735	5/16/2024
		Niobrara, Original Hole	RDX	4	11,780	11,781	5/16/2024
		Niobrara, Original Hole	RDX	4	11,827	11,828	5/16/2024
		Niobrara, Original Hole	RDX	4	11,873	11,874	5/16/2024
		Niobrara, Original Hole	RDX	4	11,918	11,919	5/16/2024



P&A Wellbore For State

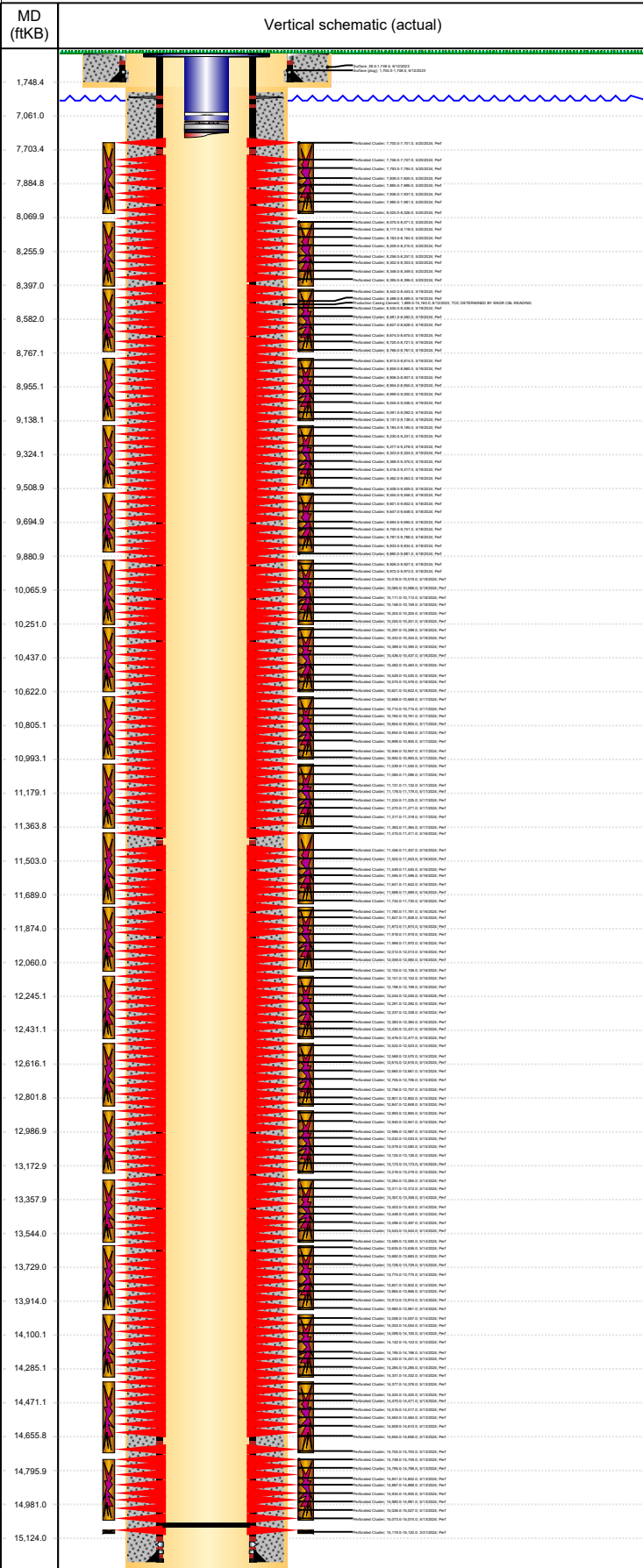
Horizontal, Original Hole, 7/17/2024 1:24:47 PM		Perforation Data					
MD (ftKB)	Vertical schematic (actual)	Linked Zone	Explosive Type	Entered Shot Total	Depth (ftKB)		Date
					Top	Btm	
1,748.4		Niobrara, Original Hole	RDX	5	11,969	11,970	5/16/2024
7,061.0		Niobrara, Original Hole	RDX	5	12,012	12,013	5/16/2024
7,703.4		Niobrara, Original Hole	RDX	5	12,059	12,060	5/16/2024
7,884.8		Niobrara, Original Hole	RDX	5	12,105	12,106	5/16/2024
8,069.9		Niobrara, Original Hole	RDX	4	12,151	12,152	5/16/2024
8,255.9		Niobrara, Original Hole	RDX	4	12,198	12,199	5/16/2024
8,397.0		Niobrara, Original Hole	RDX	4	12,244	12,245	5/16/2024
8,582.0		Niobrara, Original Hole	RDX	4	12,291	12,292	5/16/2024
8,767.1		Niobrara, Original Hole	RDX	5	12,337	12,338	5/16/2024
8,955.1		Niobrara, Original Hole	RDX	5	12,383	12,384	5/16/2024
9,138.1		Niobrara, Original Hole	RDX	5	12,430	12,431	5/16/2024
9,324.1		Niobrara, Original Hole	RDX	5	12,476	12,477	5/16/2024
9,508.9		Niobrara, Original Hole	RDX	4	12,522	12,523	5/15/2024
9,694.9		Niobrara, Original Hole	RDX	4	12,569	12,570	5/15/2024
9,880.9		Niobrara, Original Hole	RDX	4	12,615	12,616	5/15/2024
10,065.9		Niobrara, Original Hole	RDX	4	12,661	12,661	5/15/2024
10,251.0		Niobrara, Original Hole	RDX	4	12,660	12,661	5/15/2024
10,437.0		Niobrara, Original Hole	RDX	5	12,705	12,706	5/15/2024
10,622.0		Niobrara, Original Hole	RDX	5	12,756	12,757	5/15/2024
10,805.1		Niobrara, Original Hole	RDX	5	12,756	12,757	5/15/2024
10,993.1		Niobrara, Original Hole	RDX	5	12,801	12,802	5/15/2024
11,179.1		Niobrara, Original Hole	RDX	5	12,847	12,848	5/15/2024
11,363.8		Niobrara, Original Hole	RDX	4	12,893	12,894	5/15/2024
11,503.0		Niobrara, Original Hole	RDX	4	12,940	12,941	5/15/2024
11,689.0		Niobrara, Original Hole	RDX	4	12,986	12,987	5/15/2024
11,874.0		Niobrara, Original Hole	RDX	4	13,032	13,033	5/15/2024
12,060.0		Niobrara, Original Hole	RDX	5	13,079	13,080	5/15/2024
12,245.1		Niobrara, Original Hole	RDX	5	13,125	13,126	5/15/2024
12,431.1		Niobrara, Original Hole	RDX	5	13,172	13,173	5/15/2024
12,616.1		Niobrara, Original Hole	RDX	5	13,218	13,219	5/15/2024
12,801.8		Niobrara, Original Hole	RDX	4	13,264	13,265	5/14/2024
12,986.9		Niobrara, Original Hole	RDX	4	13,311	13,312	5/14/2024
13,172.9		Niobrara, Original Hole	RDX	4	13,357	13,358	5/14/2024
13,357.9		Niobrara, Original Hole	RDX	4	13,403	13,404	5/14/2024
13,544.0		Niobrara, Original Hole	RDX	5	13,448	13,449	5/14/2024
13,729.0		Niobrara, Original Hole	RDX	5	13,496	13,497	5/14/2024
13,914.0		Niobrara, Original Hole	RDX	5	13,543	13,544	5/14/2024
14,100.1		Niobrara, Original Hole	RDX	5	13,589	13,590	5/14/2024
14,285.1		Niobrara, Original Hole	RDX	4	13,635	13,636	5/14/2024
14,471.1		Niobrara, Original Hole	RDX	4	13,682	13,683	5/14/2024
14,655.8		Niobrara, Original Hole	RDX	4	13,728	13,729	5/14/2024
14,795.9		Niobrara, Original Hole	RDX	4	13,774	13,775	5/14/2024
14,981.0		Niobrara, Original Hole	RDX	5	13,821	13,822	5/14/2024
15,124.0		Niobrara, Original Hole	RDX	5	13,865	13,866	5/14/2024
		Niobrara, Original Hole	RDX	5	13,913	13,914	5/14/2024
		Niobrara, Original Hole	RDX	5	13,960	13,961	5/14/2024
		Niobrara, Original Hole	RDX	4	14,006	14,007	5/14/2024
		Niobrara, Original Hole	RDX	4	14,053	14,054	5/14/2024
		Niobrara, Original Hole	RDX	4	14,099	14,100	5/14/2024
		Niobrara, Original Hole	RDX	4	14,142	14,143	5/14/2024
		Niobrara, Original Hole	RDX	5	14,195	14,196	5/14/2024
		Niobrara, Original Hole	RDX	5	14,240	14,241	5/14/2024
		Niobrara, Original Hole	RDX	5	14,284	14,285	5/14/2024
		Niobrara, Original Hole	RDX	5	14,331	14,332	5/14/2024
		Niobrara, Original Hole	RDX	4	14,377	14,378	5/13/2024
		Niobrara, Original Hole	RDX	4	14,424	14,425	5/13/2024
		Niobrara, Original Hole	RDX	4	14,470	14,471	5/13/2024
		Niobrara, Original Hole	RDX	4	14,516	14,517	5/13/2024



P&A Wellbore For State

Horizontal, Original Hole, 7/17/2024 1:24:48 PM

Vertical schematic (actual)



Perforation Data		Explosive Type	Entered Shot Total	Top (ftKB)	Btm (ftKB)	Date
Niobrara, Original Hole	RDX	5	14,563	14,564	5/13/2024	
Niobrara, Original Hole	RDX	5	14,609	14,610	5/13/2024	
Niobrara, Original Hole	RDX	5	14,655	14,656	5/13/2024	
Niobrara, Original Hole	RDX	5	14,702	14,703	5/13/2024	
Niobrara, Original Hole	RDX	4	14,748	14,749	5/13/2024	
Niobrara, Original Hole	RDX	4	14,795	14,796	5/13/2024	
Niobrara, Original Hole	RDX	4	14,841	14,842	5/13/2024	
Niobrara, Original Hole	RDX	4	14,887	14,888	5/13/2024	
Niobrara, Original Hole	RDX	5	14,934	14,935	5/13/2024	
Niobrara, Original Hole	RDX	5	14,980	14,981	5/13/2024	
Niobrara, Original Hole	RDX	5	15,026	15,027	5/13/2024	
Niobrara, Original Hole	RDX	5	15,073	15,074	5/13/2024	
Niobrara, Original Hole		12	15,119	15,120	3/31/2024	

Stimulation Stages			
Zone	Stim/Treat Date	Top (ftKB)	Btm (ftKB)
Niobrara, Original Hole	5/20/2024	7,700.0	8,026.0
Niobrara, Original Hole	5/20/2024	8,071.0	8,397.0
Niobrara, Original Hole	5/20/2024	8,442.0	8,767.0
Niobrara, Original Hole	5/19/2024	8,813.0	9,138.0
Niobrara, Original Hole	5/19/2024	9,184.0	9,509.0
Niobrara, Original Hole	5/19/2024	9,555.0	9,880.0
Niobrara, Original Hole	5/18/2024	9,926.0	10,251.0
Niobrara, Original Hole	5/18/2024	10,297.0	10,622.0
Niobrara, Original Hole	5/17/2024	10,668.0	10,993.0
Niobrara, Original Hole	5/17/2024	11,039.0	11,364.0
Niobrara, Original Hole	5/17/2024	11,410.0	11,735.0
Niobrara, Original Hole	5/16/2024	11,780.0	12,106.0
Niobrara, Original Hole	5/16/2024	12,151.0	12,477.0
Niobrara, Original Hole	5/16/2024	12,522.0	12,848.0
Niobrara, Original Hole	5/15/2024	12,893.0	13,219.0
Niobrara, Original Hole	5/15/2024	13,264.0	13,590.0
Niobrara, Original Hole	5/14/2024	13,635.0	13,961.0
Niobrara, Original Hole	5/14/2024	14,006.0	14,332.0
Niobrara, Original Hole	5/13/2024	14,377.0	14,703.0
Niobrara, Original Hole	5/13/2024	14,748.0	15,074.0
Niobrara, Original Hole	5/13/2024	15,119.0	15,120.0

Other In Hole					
Run Date	Des	Make	OD (in)	Top (ftKB)	Btm (ftKB)

Logs			
Date	Type	Top (ftKB)	Btm (ftKB)

Plug Back Total Depths			
Date	Type	Com	Depth (ftKB)
8/11/2023	Float Collar		15,145.8
5/25/2024	No Tag Established	TD BASED OFF CTU COUNTER	15,080.0