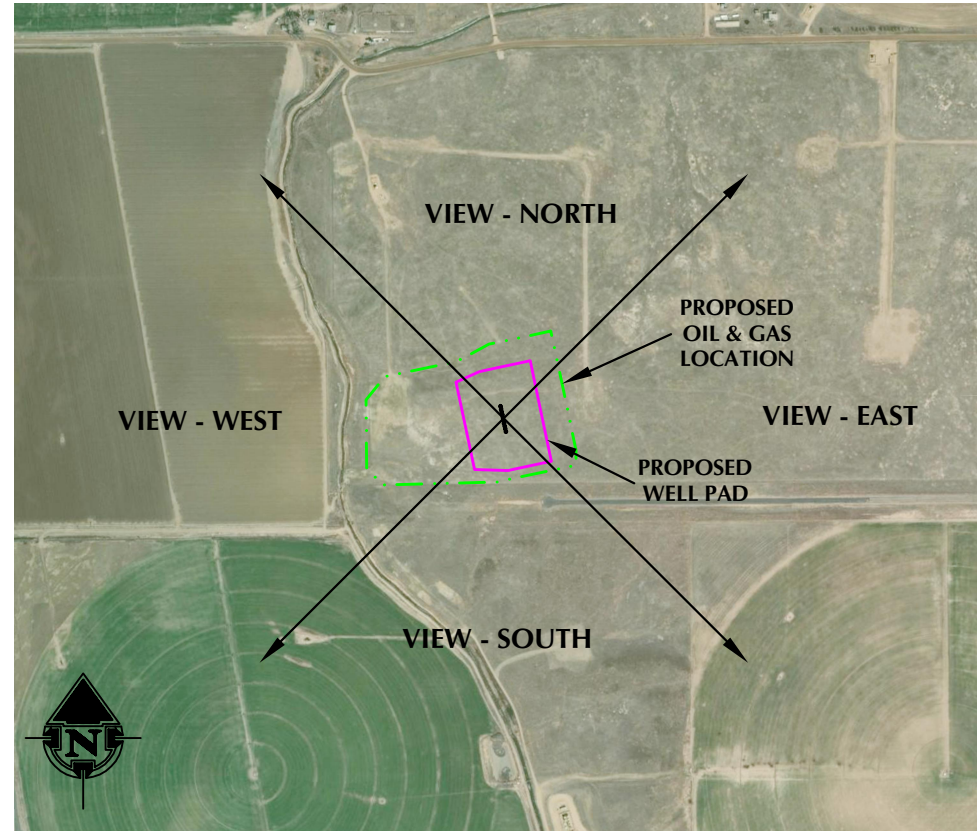


**WELL PAD LOCATION PICTURES
LARKSPUR FED**

S1/2 NW1/4 SECTION 5, TOWNSHIP 2 NORTH, RANGE 66 WEST, 6TH P.M., WELD COUNTY, COLORADO



LOCATION PICTURE OF LARKSPUR FED WELL PAD - CAMERA VIEW NORTH



VIEW - OVERHEAD
AERIAL IMAGERY COURTESY OF ESRI, INC.



LOCATION PICTURE OF LARKSPUR FED WELL PAD - CAMERA VIEW EAST



LOCATION PICTURE OF LARKSPUR FED WELL PAD - CAMERA VIEW SOUTH



LOCATION PICTURE OF LARKSPUR FED WELL PAD - CAMERA VIEW WEST

K:\AMDRK\2023\2023_IDS_LARKSPUR_FED_T2N_R66W_SEC_5\DWG\LARKSPUR_FED_T2N_R66W_SEC_5.dwg, 3/8/2024 3:07:04 PM, s.sundberg



LOVELAND OFFICE
6706 North Franklin Avenue
Loveland, Colorado 80538
Phone 970-776-4331

SHERIDAN OFFICE
1095 Saberton Avenue
Sheridan, Wyoming 82801
Phone 307-674-0609

CONSULTING, LLC

**Kerr-McGee Oil &
Gas Onshore LP**
1099 18th Street
Denver, Colorado 80202

DATE SURVEYED: 11/30/23
DATE: 3/8/24
DRAFTER: SRS
REVISED:

DATA SOURCES:
-AERIAL IMAGERY COURTESY OF ESRI, INC.