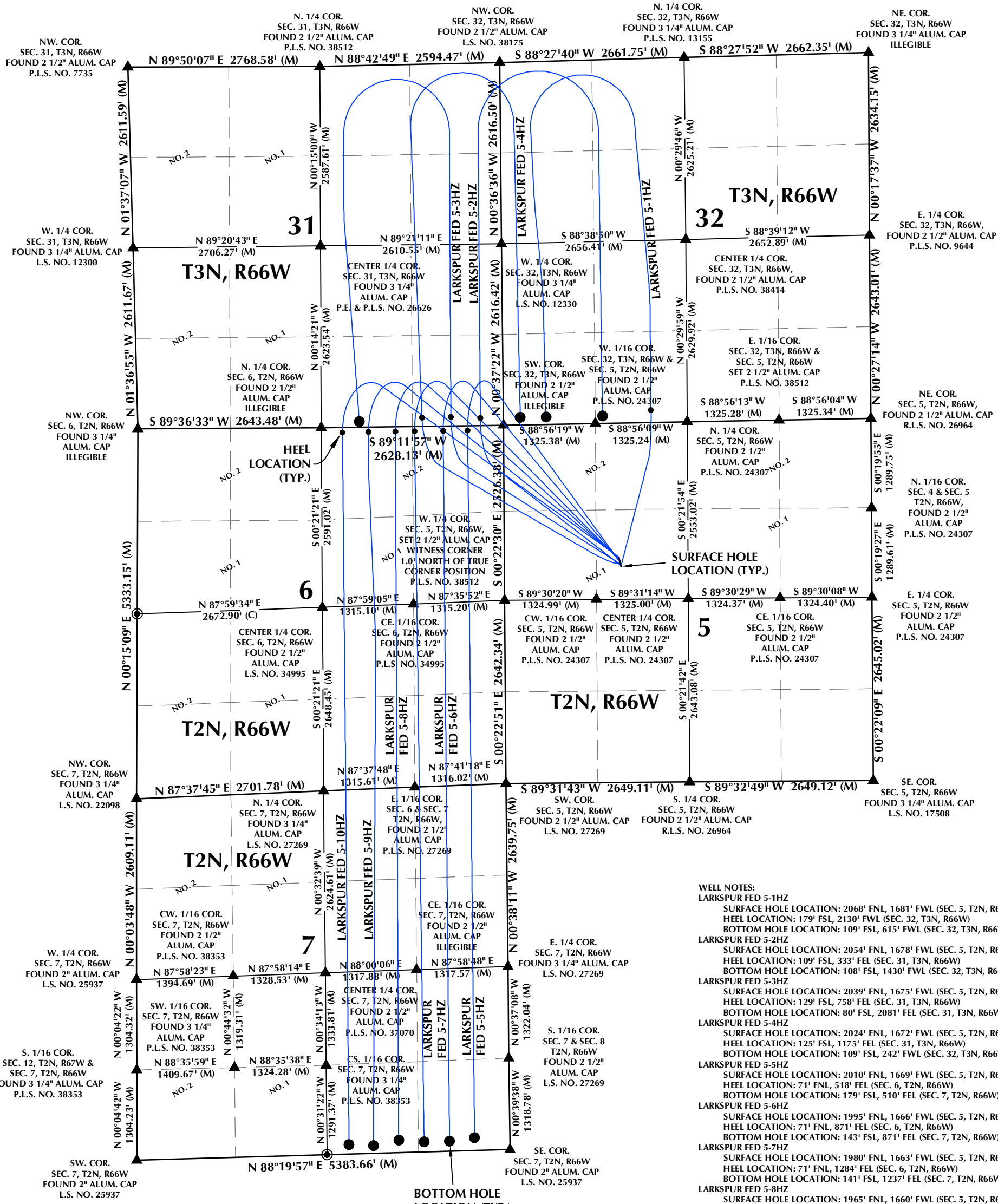


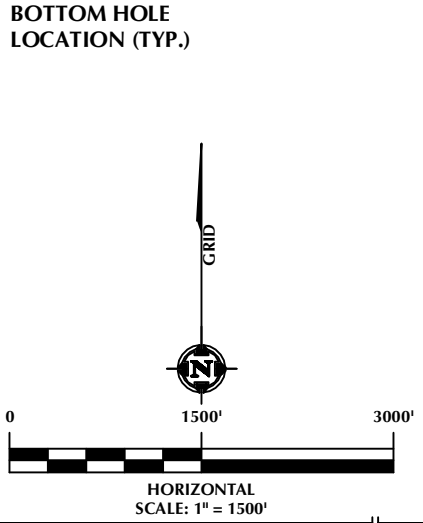
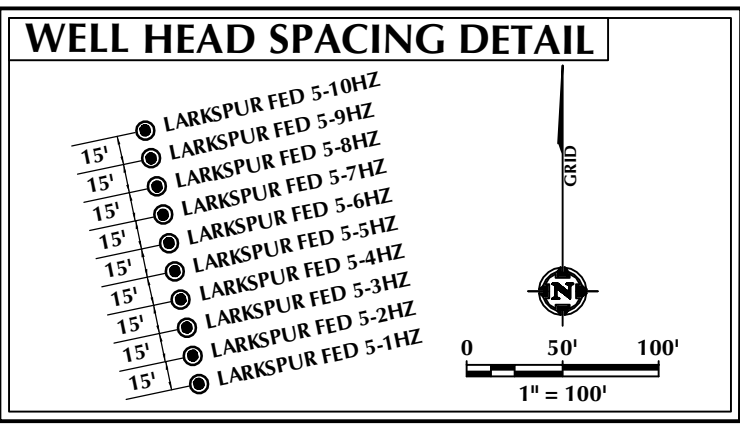
# DIRECTIONAL WELL PLAT (ECMC) / MULTI-WELL PLAN (OGED)

## SECTIONS 31 & 32, T3N, R66W & SECTIONS 5, 6 & 7, T2N, R66W, 6TH P.M.



- WELL NOTES:**
- LARKSPUR FED 5-1HZ  
SURFACE HOLE LOCATION: 2068' FNL, 1681' FWL (SEC. 5, T2N, R66W)  
HEEL LOCATION: 179' FSL, 2130' FWL (SEC. 32, T3N, R66W)  
BOTTOM HOLE LOCATION: 109' FSL, 615' FWL (SEC. 32, T3N, R66W)
  - LARKSPUR FED 5-2HZ  
SURFACE HOLE LOCATION: 2054' FNL, 1678' FWL (SEC. 5, T2N, R66W)  
HEEL LOCATION: 109' FSL, 333' FWL (SEC. 31, T3N, R66W)  
BOTTOM HOLE LOCATION: 108' FSL, 1430' FWL (SEC. 32, T3N, R66W)
  - LARKSPUR FED 5-3HZ  
SURFACE HOLE LOCATION: 2039' FNL, 1675' FWL (SEC. 5, T2N, R66W)  
HEEL LOCATION: 129' FSL, 758' FWL (SEC. 31, T3N, R66W)  
BOTTOM HOLE LOCATION: 109' FSL, 2081' FWL (SEC. 31, T3N, R66W)
  - LARKSPUR FED 5-4HZ  
SURFACE HOLE LOCATION: 2024' FNL, 1672' FWL (SEC. 5, T2N, R66W)  
HEEL LOCATION: 125' FSL, 1175' FWL (SEC. 31, T3N, R66W)  
BOTTOM HOLE LOCATION: 109' FSL, 242' FWL (SEC. 32, T3N, R66W)
  - LARKSPUR FED 5-5HZ  
SURFACE HOLE LOCATION: 2010' FNL, 1669' FWL (SEC. 5, T2N, R66W)  
HEEL LOCATION: 71' FNL, 518' FWL (SEC. 6, T2N, R66W)  
BOTTOM HOLE LOCATION: 179' FSL, 510' FWL (SEC. 7, T2N, R66W)
  - LARKSPUR FED 5-6HZ  
SURFACE HOLE LOCATION: 1995' FNL, 1666' FWL (SEC. 5, T2N, R66W)  
HEEL LOCATION: 71' FNL, 871' FWL (SEC. 6, T2N, R66W)  
BOTTOM HOLE LOCATION: 80' FSL, 871' FWL (SEC. 7, T2N, R66W)
  - LARKSPUR FED 5-7HZ  
SURFACE HOLE LOCATION: 1980' FNL, 1663' FWL (SEC. 5, T2N, R66W)  
HEEL LOCATION: 71' FNL, 1284' FWL (SEC. 6, T2N, R66W)  
BOTTOM HOLE LOCATION: 141' FSL, 1237' FWL (SEC. 7, T2N, R66W)
  - LARKSPUR FED 5-8HZ  
SURFACE HOLE LOCATION: 1965' FNL, 1660' FWL (SEC. 5, T2N, R66W)  
HEEL LOCATION: 71' FNL, 1562' FWL (SEC. 6, T2N, R66W)  
BOTTOM HOLE LOCATION: 179' FSL, 1603' FWL (SEC. 7, T2N, R66W)
  - LARKSPUR FED 5-9HZ  
SURFACE HOLE LOCATION: 1951' FNL, 1657' FWL (SEC. 5, T2N, R66W)  
HEEL LOCATION: 72' FNL, 1949' FWL (SEC. 6, T2N, R66W)  
BOTTOM HOLE LOCATION: 109' FSL, 1969' FWL (SEC. 7, T2N, R66W)
  - LARKSPUR FED 5-10HZ  
SURFACE HOLE LOCATION: 1936' FNL, 1654' FWL (SEC. 5, T2N, R66W)  
HEEL LOCATION: 73' FNL, 2324' FWL (SEC. 6, T2N, R66W)  
BOTTOM HOLE LOCATION: 134' FSL, 2321' FWL (SEC. 7, T2N, R66W)

- NOTES:**
1. ▲ INDICATES SECTION CORNER.
  2. ● INDICATES CALCULATED CORNER.
  3. ELEVATION BASED ON NAVD88 (GEOID18).
  4. BASIS OF BEARINGS DERIVED FROM COLORADO COORDINATE SYSTEM OF 1983, NORTH ZONE.
  5. ALL MEASURED DISTANCES ARE GRID.
- COMBINED SCALE FACTOR: .99972897 CALCULATED FROM THE W. 1/4 CORNER OF SECTION 5, T2N, R66W.



**WELL PAD - LARKSPUR FED**

**DIRECTIONAL WELL PLAT (ECMC) / MULTI-WELL PLAN (OGED)**  
 LARKSPUR FED 5-1HZ, LARKSPUR FED 5-2HZ,  
 LARKSPUR FED 5-3HZ, LARKSPUR FED 5-4HZ,  
 LARKSPUR FED 5-5HZ, LARKSPUR FED 5-6HZ,  
 LARKSPUR FED 5-7HZ, LARKSPUR FED 5-8HZ,  
 LARKSPUR FED 5-9HZ & LARKSPUR FED 5-10HZ  
 SECTIONS 31 & 32, T3N, R66W, &  
 SECTIONS 5, 6 & 7, T2N, R66W, 6TH P.M.  
 WELD COUNTY, COLORADO

**Kerr-McGee Oil &  
Gas Onshore LP**

1099 18th Street  
Denver, Colorado 80202

**609**

**CONSULTING, LLC**

**SHERIDAN OFFICE**  
1095 Saberton Avenue  
Sheridan, Wyoming 82801  
Phone 307-674-0609

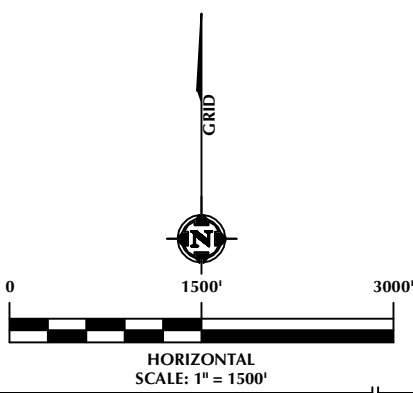
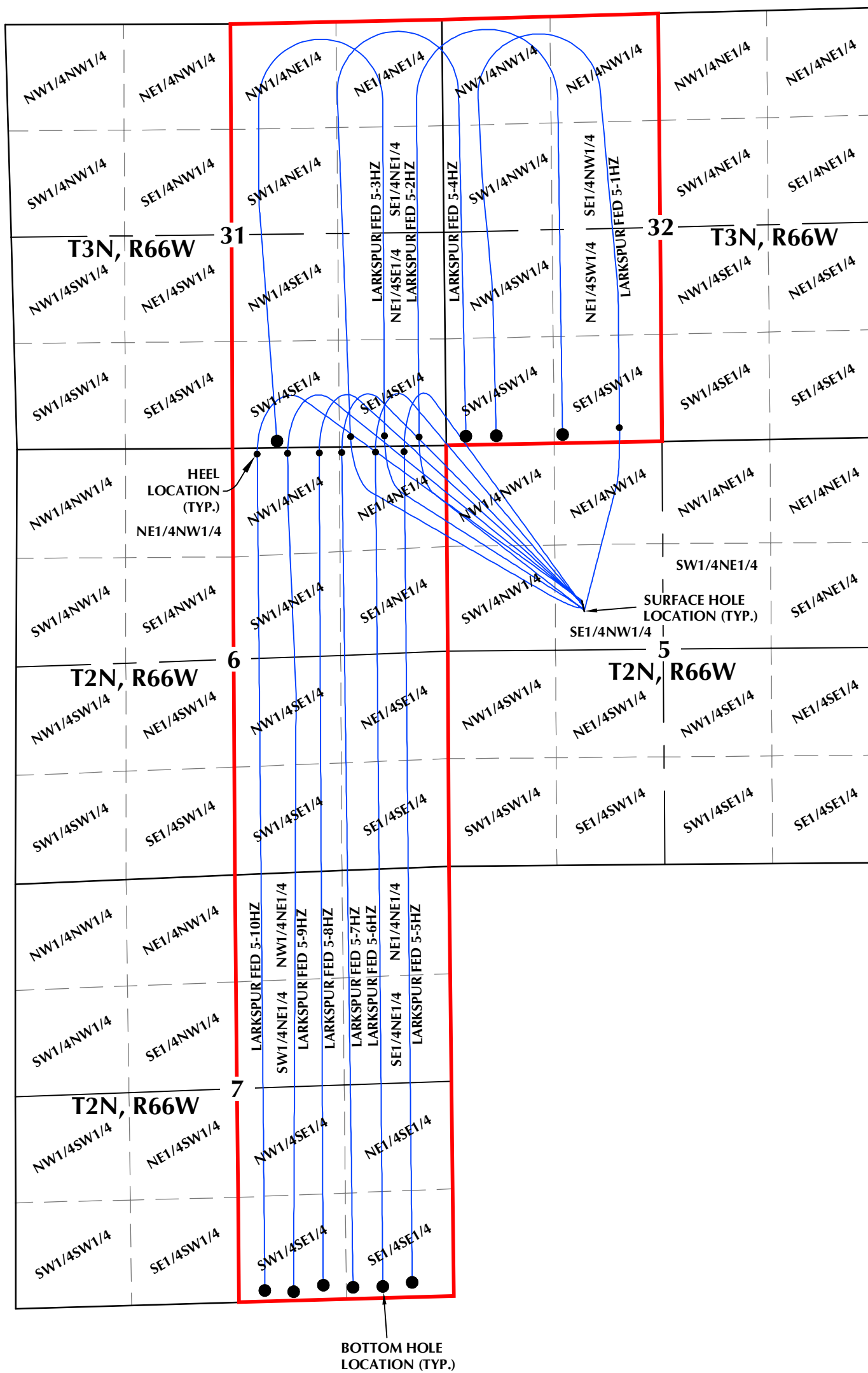
**LOVELAND OFFICE**  
6706 North Franklin Avenue  
Loveland, Colorado 80538  
Phone 970-776-4331

DRAFTED BY:	SJM	CHECKED BY:	RKF
DATE DRAFTED:	3/21/34	DATE SURVEYED:	1/3/24
REVISED:		FILE NAME:	23-125

SHEET NO:  
1A  
1A OF 1

K:\WMD\KOC\2023\2023\_125\_LARKSPUR\_FED\_T2N\_R66W\_SEC\_5PLAT\LARKSPUR.dwg, 3/21/2024 1:21:16 PM, smiller

**DIRECTIONAL WELL PLAT (ECMC) / MULTI-WELL PLAN (OGED)  
SECTIONS 31 & 32, T3N, R66W & SECTIONS 5, 6 & 7, T2N, R66W, 6TH P.M.**



- LEGEND:**
- DSU BOUNDARY
  - WELLBORE TRAJECTORY
  - HEEL LOCATION
  - BOTTOM HOLE LOCATION

**WELL PAD - LARKSPUR FED**

DIRECTIONAL WELL PLAT (ECMC) / MULTI-WELL PLAN (OGED)  
LARKSPUR FED 5-1HZ, LARKSPUR FED 5-2HZ,  
LARKSPUR FED 5-3HZ, LARKSPUR FED 5-4HZ,  
LARKSPUR FED 5-5HZ, LARKSPUR FED 5-6HZ,  
LARKSPUR FED 5-7HZ, LARKSPUR FED 5-8HZ,  
LARKSPUR FED 5-9HZ & LARKSPUR FED 5-10HZ  
SECTIONS 31 & 32, T3N, R66W, &  
SECTIONS 5, 6 & 7, T2N, R66W, 6TH P.M.  
WELD COUNTY, COLORADO

**Kerr-McGee Oil &  
Gas Onshore LP**  
1099 18th Street  
Denver, Colorado 80202



**CONSULTING, LLC**

SHERIDAN OFFICE  
1095 Saberton Avenue  
Sheridan, Wyoming 82801  
Phone 307-674-0609

LOVELAND OFFICE  
6706 North Franklin Avenue  
Loveland, Colorado 80538  
Phone 970-776-4331

DRAFTED BY:	SJM	CHECKED BY:	RKF	<b>1B</b> 1B OF 1
DATE DRAFTED:	3/21/34	DATE SURVEYED:	1/3/24	
REVISED:		FILE NAME:	23-125	

K:\AMARCO\2023\23\_125\_LARKSPUR\_FED\_T2N\_R66W\_SEC\_5\PLAT\SPAT\LARKSPUR.dwg, 3/21/2024 1:21:19 PM, smiller