



# PATINA OIL & GAS CORPORATION

Aufrecht 1

SENE 2-5N-67W

1368' FNL & 1287' FEL

Weld County, Colorado

## CURRENT WELLBORE SCHEMATIC

10/5/2003

### CODELL RECOMPLETE

API: 05-123-07415  
OGCC # 68594

GL Elev: 4909'  
KB Elev: 4919'

Spud Date: 2/23/1972

#### Surface Casing :

8 5/8" 24# @ 235'

Cement: 150 sx

TOC @ 6960'

Tubing Details: NA

Acidize w/2000 gal 15% HCl

Re-Frac'd J-Sand 12/14/82 w/117,138 gal GWX 50/40 fluid & 165,000# 20/40 sand

Avg Rate: 12 bpm Max Rate: 12 bpm

Avg PSI: 7000 Max PSI: 7500 ISIP: 3300

J-Sand Re-Perfs: 7658'-7686' (26 holes)

FGS J-Sand 3/30/83

Liner: 2-7/8" 6.5# @ 7612'

Cement: 62/135 sx (9/10/03)

Production Casing :

4 1/2" 11.6# @ 7755'

Cement: 250 sx (3/5/72)

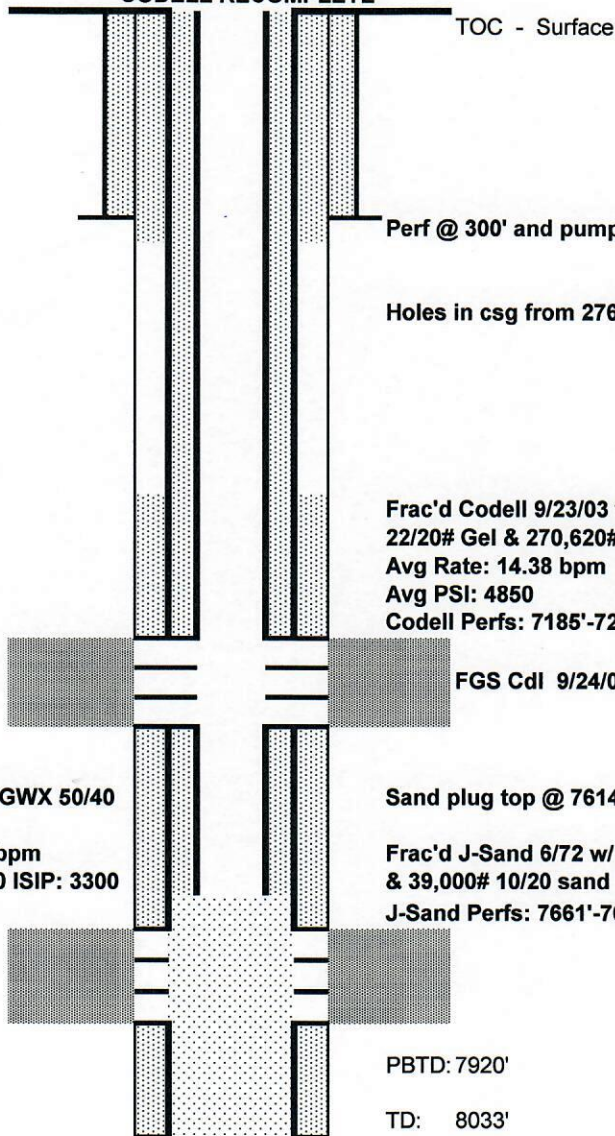
Comments: Single well battey

Shut in since 5/92, on State shut in list. As of 8/14/02, no lease.

No data in well file prior to 12/82, except for original form 5. After 12/82, data still sketchy.

Ran Neutron GR log 12/3/82, discovered "chatter area" @ 7435'-7448' that looked like possible perfs. Set pkr below area to frac.

Location discrepancy, was some state forms say NENE, 990' FNL & 990' FEL.



Perf @ 300' and pump 30 bbl cmt, 9/5/03

Holes in csg from 2763' to 4619', run liner.

Frac'd Codell 9/23/03 w/127,680 gal Vistar 22/20# Gel & 270,620# 20/40 Ottawa Sand  
Avg Rate: 14.38 bpm Max Rate: 14.74 bpm  
Avg PSI: 4850 Max PSI: 5234 ISIP: 3508  
Codell Perfs: 7185'-7205' (80 holes)

FGS Cdl 9/24/03

Sand plug top @ 7614'

Frac'd J-Sand 6/72 w/ ? bbls fluid, 21,500# 20/40 & 39,000# 10/20 sand  
J-Sand Perfs: 7661'-7678' (10 holes)

PBTD: 7920'

TD: 8033'