



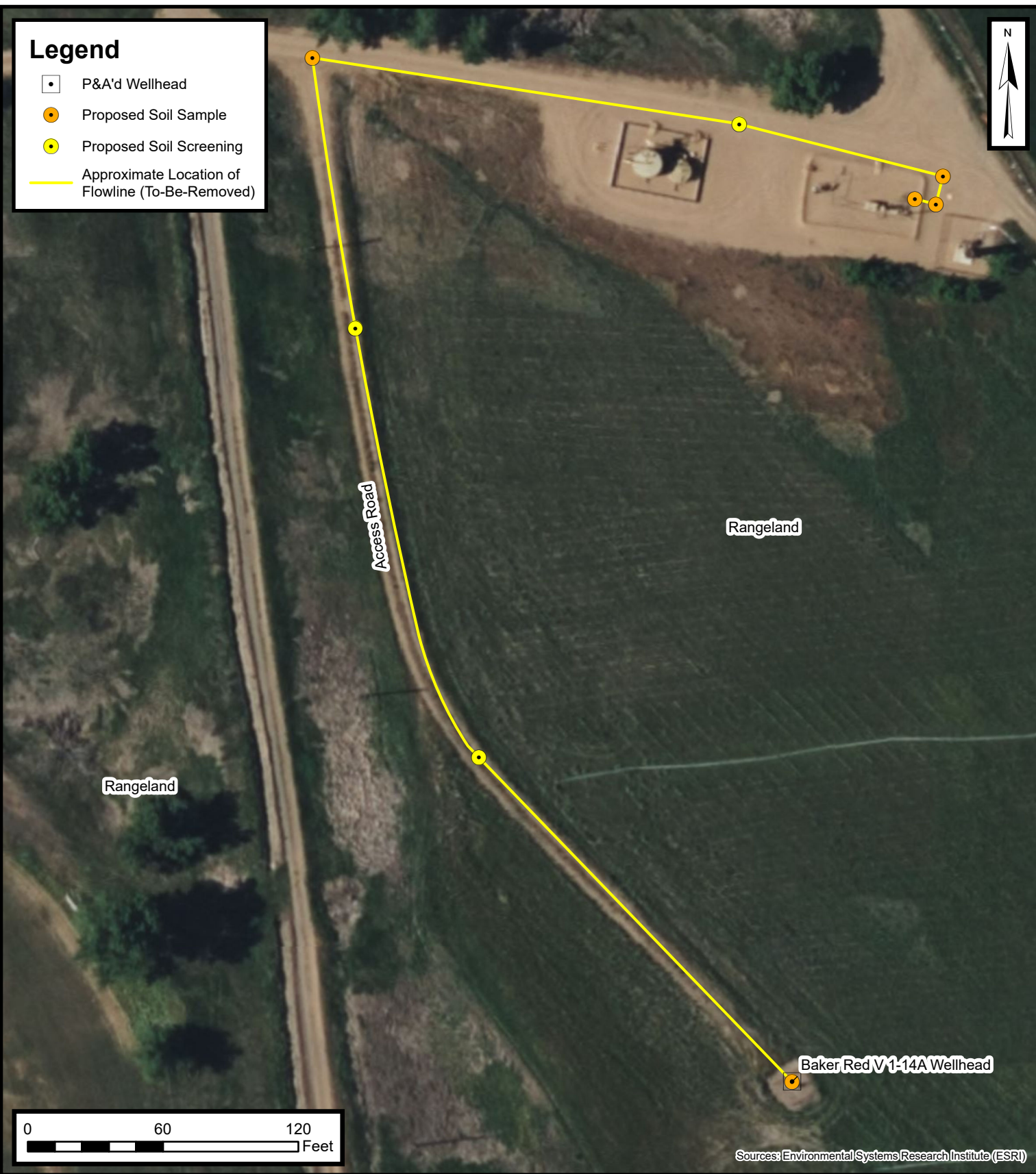


Default Folder: C:\Users\Mangan\OneDrive - ENSOLUM, LLC\Ensolium GIS\0 - Projects\Kerr-McGee Oil & Gas Onshore, LP\09A1417866 - Baker Red V 1-14A Wellhead

## Legend

-  P&A'd Wellhead
-  Proposed Soil Sample
-  Proposed Soil Screening
-  Approximate Location of Flowline (To-Be-Removed)



### Proposed Flowline Excavation and Soil Sampling Locations Map

Baker Red V 1-14A Flowline  
Kerr-McGee Oil & Gas Onshore, LP  
SESW SEC 1-T2N-R67W  
Weld County, CO

Project Number: 09A1417866

FIGURE

3