



Well Location Plat

GREGORY 0780 4-4H9

As shown in the , T7N, R80W, 6th P.M.
Jackson County, Colorado

BASIS OF BEARINGS

US STATE PLANE 1983
CO NORTH 0501
EPSG: 2231

BASIS OF ELEVATION

NAVD88 Computed using GEOID12B
as measured using a combination of
Static and Kinematic GPS based on
an OPUS Solution Report.

T.8N, R80W, 6th P.M.

NAD 83 Surface Location

Lat=40.613969°N
Long=106.390126°W

STATE PLANE NAD 83(CO. NORTH)

N=1467750.81
E=2752877.38

NAD 83 Top of Productive Zone

Lat=40.614868°N
Long=106.379563°W

STATE PLANE NAD 83 (CO. NORTH)

N=1468049.35
E=2755813.03

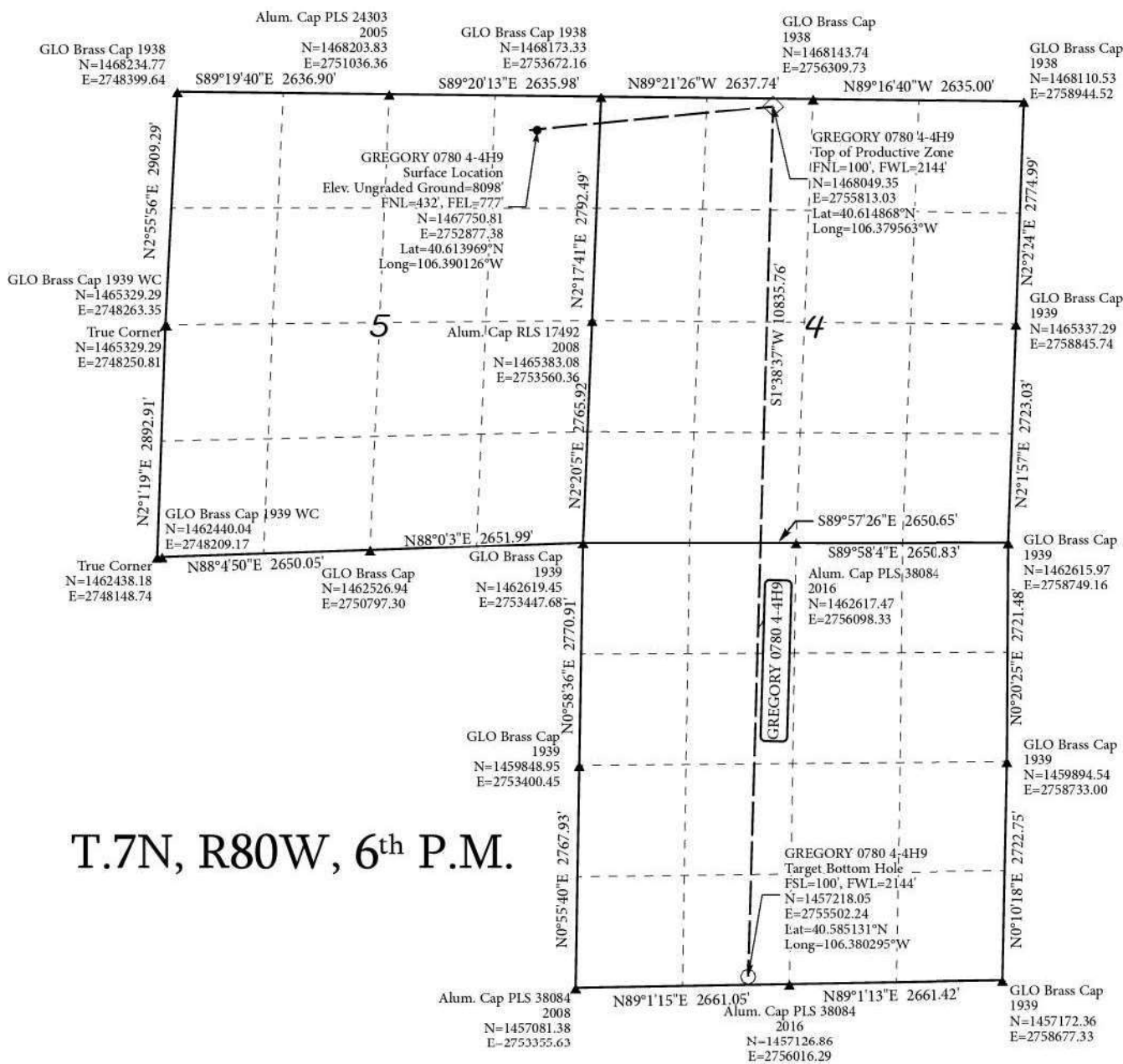
NAD 83 Target Bottom Hole

Lat=40.585131°N
Long=106.380295°W

STATE PLANE NAD 83 (CO. NORTH)

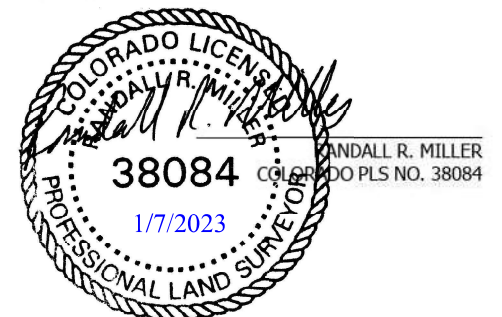
N=1457218.05
E=2755502.24

PDOP=1.313



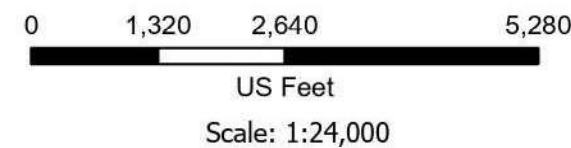
T.7N, R80W, 6th P.M.

THIS IS TO CERTIFY THAT THE ABOVE PLAT WAS PREPARED FROM
FIELD NOTES OF ACTUAL SURVEYS MADE BY ME OR UNDER MY
SUPERVISION AND THAT THE SAME ARE TRUE AND CORRECT TO
THE BEST OF MY KNOWLEDGE AND BELIEF.



Legend

- Surface Location
- ◇ Top of Productive Zone
- Target Bottom Hole
- ▲ Found Corners



NORTH PARK ENGINEERING & CONSULTING, INC.
P.O. BOX 395
WALDEN, CO 80480
(970) 723-3725

DATE OF FIELD WORK: 07/11/2022	DRAWING COMPLETION: 10/11/2022
SURVEYED BY: Curtis Utley	CHECKED BY: Randall Miller
DRAWN BY: Alex Lawton	