



**Well Location Plat**

GREGORY 0780 7-4H9

As shown in the , T7N, R80W, 6<sup>th</sup> P.M.  
Jackson County, Colorado

**BASIS OF BEARINGS**  
US STATE PLANE 1983  
CO NORTH 0501  
EPSG: 2231

T.8N, R80W, 6<sup>th</sup> P.M.

**BASIS OF ELEVATION**  
NAVD88 Computed using GEOID12B  
as measured using a combination of  
Static and Kinematic GPS based on  
an OPUS Solution Report.

**NAD 83 Surface Location**

Lat=40.613967°N  
Long=106.390342°W  
**STATE PLANE NAD 83(CO. NORTH)**  
N=1467750.81  
E=2752817.41

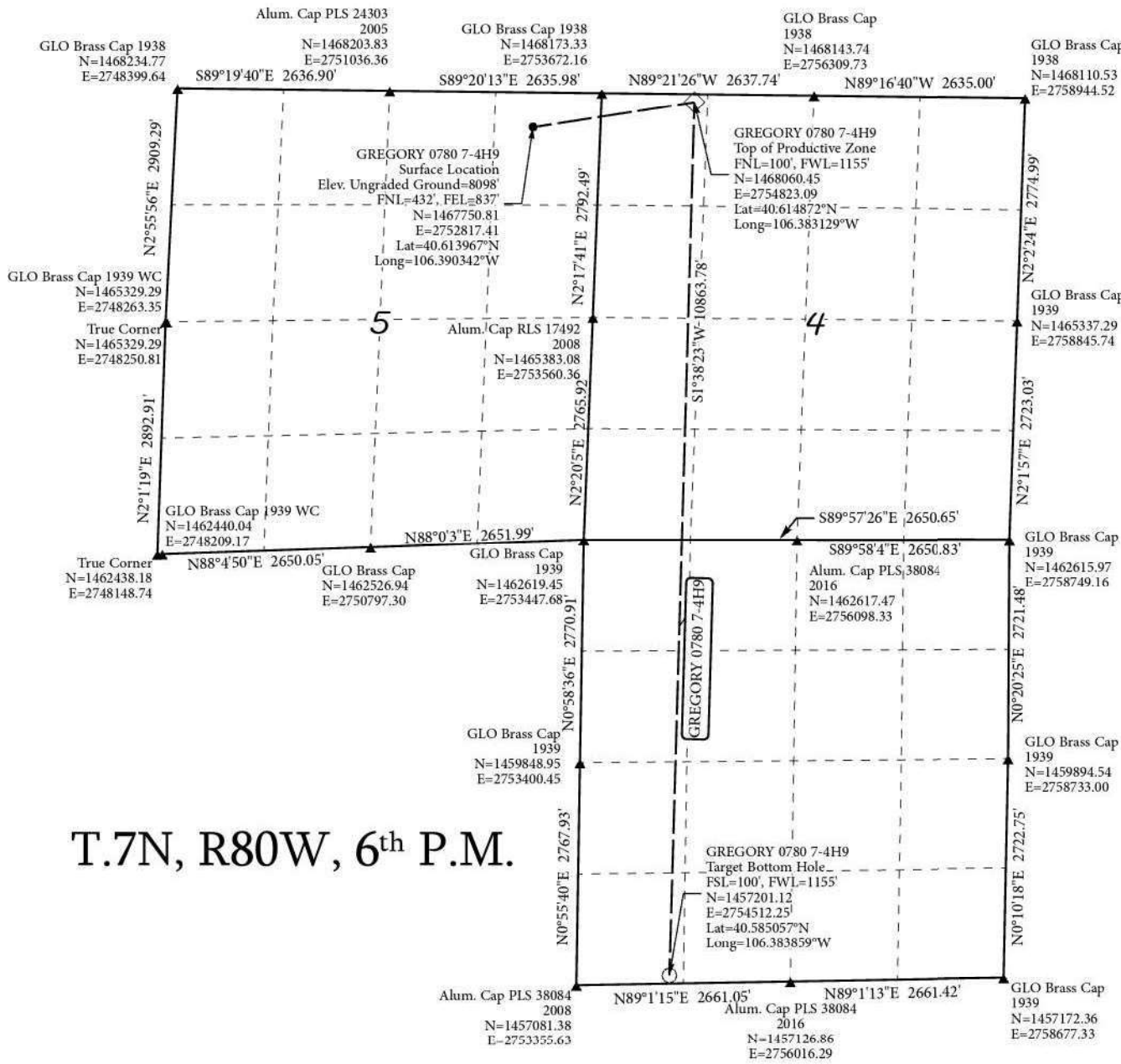
**NAD 83 Top of Productive Zone**

Lat=40.614872°N  
Long=106.383129°W  
**STATE PLANE NAD 83 (CO. NORTH)**  
N=1468060.45  
E=2754823.09

**NAD 83 Target Bottom Hole**

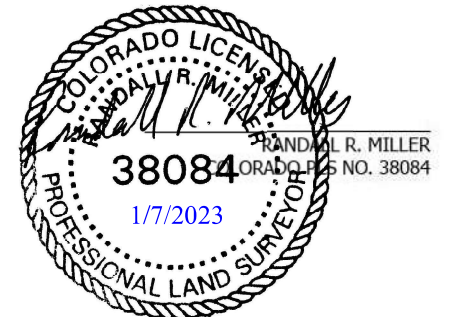
Lat=40.585057°N  
Long=106.383859°W  
**STATE PLANE NAD 83 (CO. NORTH)**  
N=1457201.12  
E=2754512.25

**PDOP=1.285**



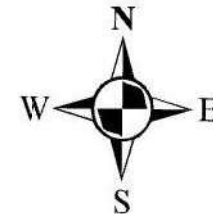
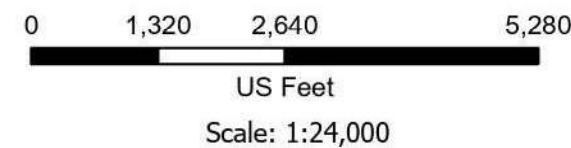
T.7N, R80W, 6<sup>th</sup> P.M.

THIS IS TO CERTIFY THAT THE ABOVE PLAT WAS PREPARED FROM  
FIELD NOTES OF ACTUAL SURVEYS MADE BY ME OR UNDER MY  
SUPERVISION AND THAT THE SAME ARE TRUE AND CORRECT TO  
THE BEST OF MY KNOWLEDGE AND BELIEF.



**Legend**

- Surface Location
- ◇ Top of Productive Zone
- Target Bottom Hole
- ▲ Found Corners



**NORTH PARK ENGINEERING & CONSULTING, INC.**  
P.O. BOX 395  
WALDEN, CO 80480  
(970) 723-3725

DATE OF FIELD WORK: 07/11/2022	DRAWING COMPLETION: 10/11/2022
SURVEYED BY: Curtis Utley	DRAWN BY: Alex Lawton
CHECKED BY: Randall Miller	