



**RADAIL BOND LOG  
GAMMA RAY  
CCL / VDL / MAP**

Company CHEVRON  
Well GOLLNER O 27-07  
Field WATTENBERG 90750  
County WELD  
State CO. Country U.S.A.

Company CHEVRON  
Well GOLLNER O 27-07  
Field WATTENBERG 90750  
County WELD  
State CO. Country U.S.A.

Location: API #: 05-123-15972  
Qtr. Qtr. SWNE  
Permanent Datum SEC 27 TWP 4N RGE 67W  
Log Measured From KB 10' Elevation 4889'  
Drilling Measured From KB Elevation 4889'  
Other Services NONE  
K.B. 4899'  
D.F. 4898'  
G.L. 4889'

Date APRIL 15th, 2024  
Run Number 1  
Depth Driller 7440'  
Depth Logger 2517'  
Bottom Logged Interval 2510'  
Top Log Interval SURFACE  
Open Hole Size 8-5/8"  
Type Fluid WATER  
Density / Viscosity 8.3#  
Max. Recorded Temp. N/A  
Estimated Cement Top N/A  
Time Well Ready N/A  
Time Logger on Bottom N/A  
Equipment Number DSS HSR10 002  
Location MILLIKEN, CO  
Recorded By T. VAN NEST  
Witnessed By MR. BOBBY ESPINOSA

Borehole Record			Tubing Record				
Run Number	Bit	From	To	Size	Weight	From	To

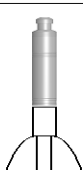
Casing Record	Size	Wgt/Ft	Top	Bottom
Surface String	8-5/8"	24#	SURFACE	381'
Prot. String				
Production String	2-7/8"	8.7#	SURFACE	7416'
Liner				

<<< Fold Here >>>

All interpretations are opinions based on inferences from electrical or other measurements and we cannot and do not guarantee the accuracy or correctness of any interpretation, and we shall not, except in the case of gross or willful negligence on our part, be liable or responsible for any loss, costs, damages, or expenses incurred or sustained by anyone resulting from any interpretation made by any of our officers, agents or employees. These interpretations are also subject to our general terms and conditions set out in our current Price Schedule.

**Comments**

**NO CORRELATION LOGS AVAILBLE**

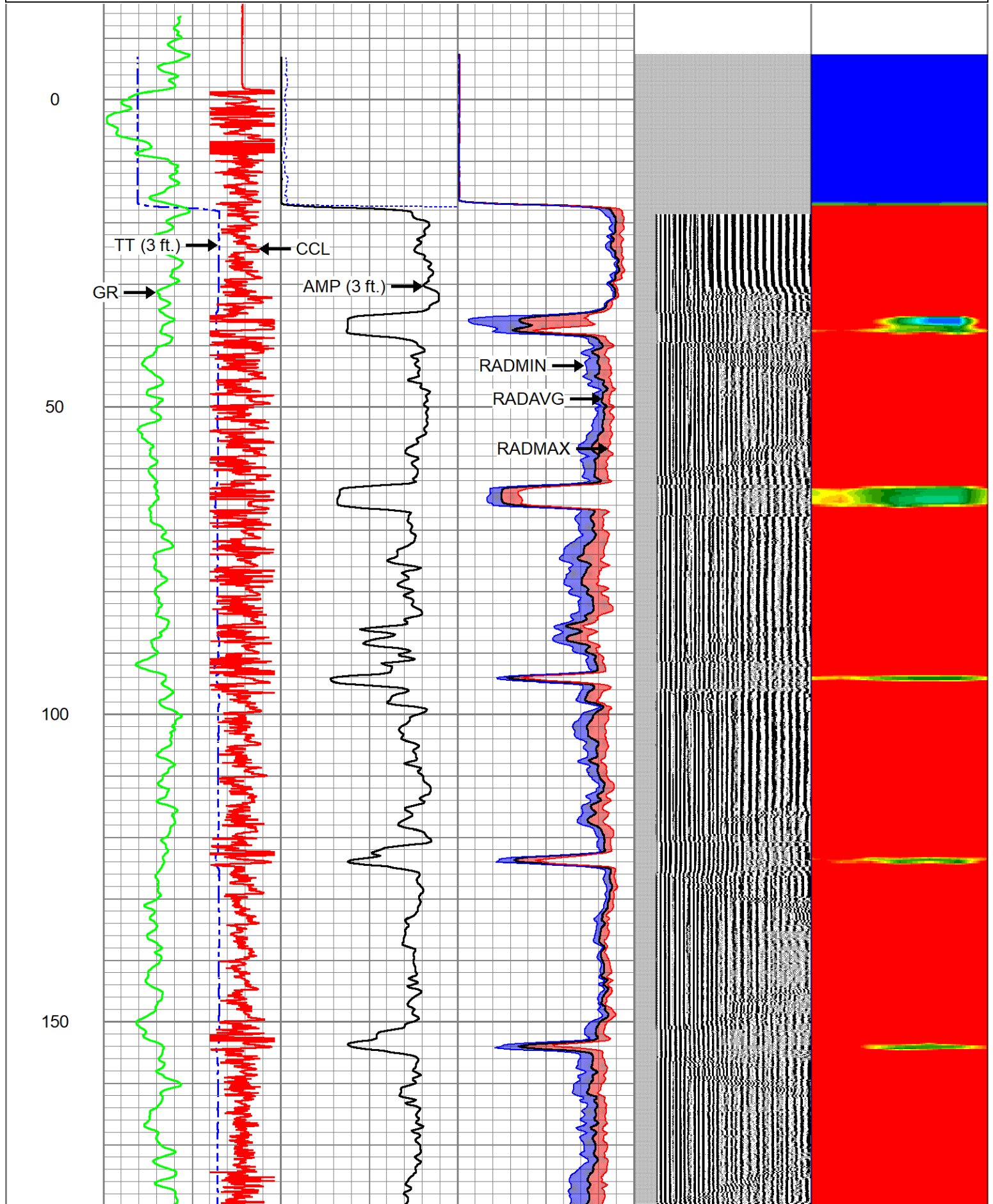
Sensor	Offset (ft)	Schematic	Description	Length (ft)	O.D. (in)	Weight (lb)
			Cable_Head-1_7/16 Titan 1 7/16" Cable Head	1.02	1.44	3.31

			PROBE-1.688_bow Bowspring centralizer for 1 11/16" Probe CBL	3.17	1.69	10.00
CCL	0.00					
GR	0.97					
			DSS_HSR_ELE-DSS_HSR_10_ELE (HSR10 0000) DSS 1 11/16" HSR Bond tool - Electronics Module	5.99	1.69	27.50
ROTV	5.24					
TCF	5.24					
THV	5.24					
INTEMP	5.24					
PNEG	5.24					
PPOS	5.24					
GRHV	5.24					
WVFS6	7.16					
WVFS5	7.16					
WVFS4	7.16					
WVFS3	7.16		DSS_HSR_SND-DSS_HSR_10_SND (HSR10 0000) DSS 1 11/16" HSR Bond tool - Sonde Module	8.26	1.69	41.50
WVFS2	7.16					
WVFS1	7.16					
WVFCAL	7.66					
WVF3FT	7.66					
WVF5FT	8.66					
TEMP	13.16					
WVFSYNC	13.50					
			PROBE-1.688_bow Bowspring centralizer for 1 11/16" Probe CBL	3.17	1.69	10.00

Dataset: chevron gollner o 27-07.db: WATTENBERG\_90750/GOLLNER\_O\_27-07/DSS\_HSR\_10\_RBL/RBL.1  
 Total length: 21.60 ft  
 Total weight: 92.31 lb  
 O.D.: 1.69 in

Database File chevron gollner o 27-07.db  
 Dataset Pathname WATTENBERG\_90750/GOLLNER\_O\_27-07/DSS\_HSR\_10\_RBL/RBL.1  
 Presentation Format ranger\_dss\_radial  
 Dataset Creation Mon Apr 15 10:49:42 2024  
 Charted by Depth in Feet scaled 1:240

TT (3 ft.)		AMP (3 ft.)		0	RADAVG	120	VDL (5 ft.)		1	RADIAL MAP	6
350	(usec)	120	0	(mV)	120	0	RADMAX	120	200	(usec)	1200
-20000 CCL		20000		3' Amplitude x5		0	RADMIN	120			
0	GR (GAPI)	150	0	(mV)	20						



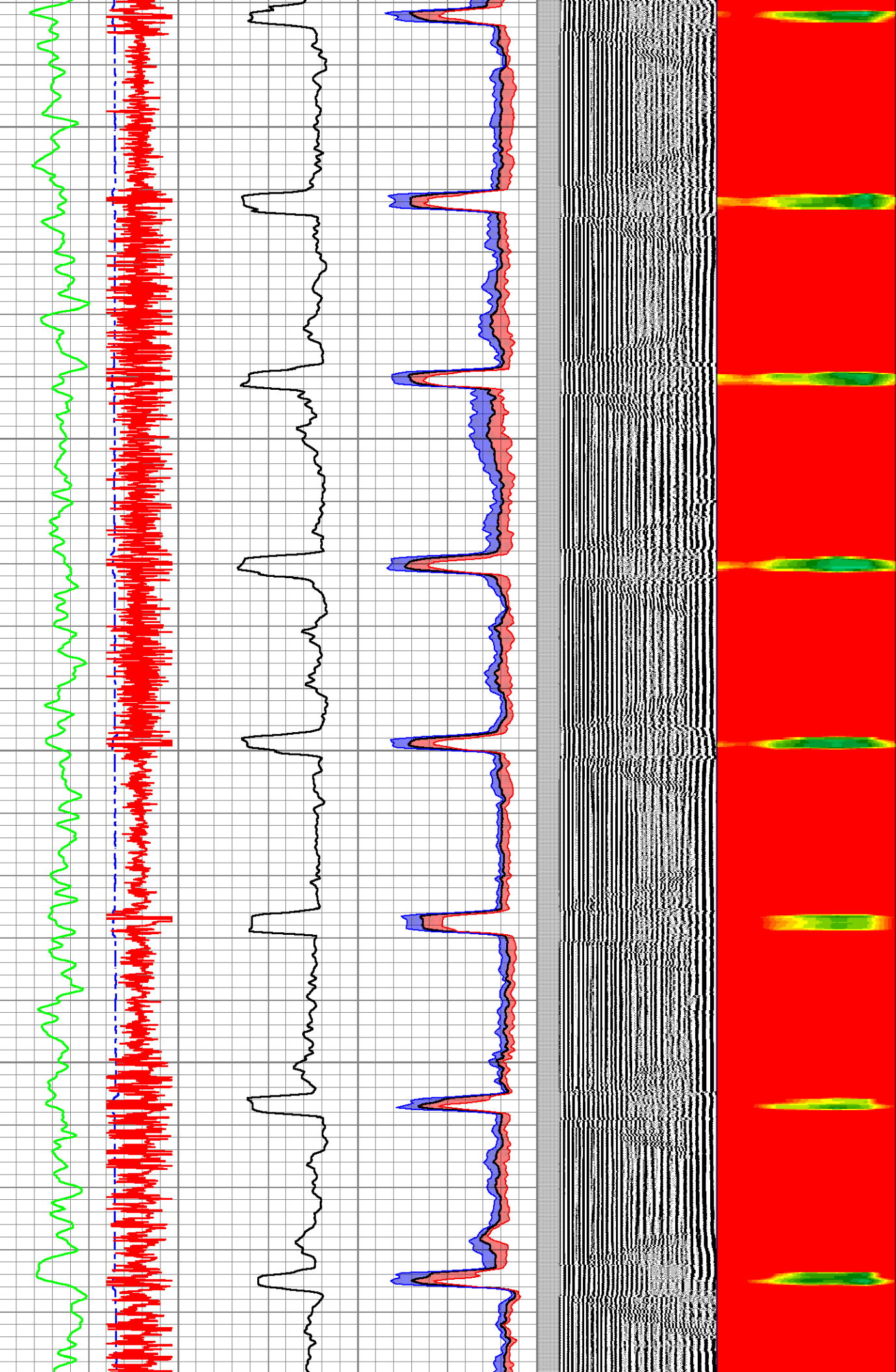
200

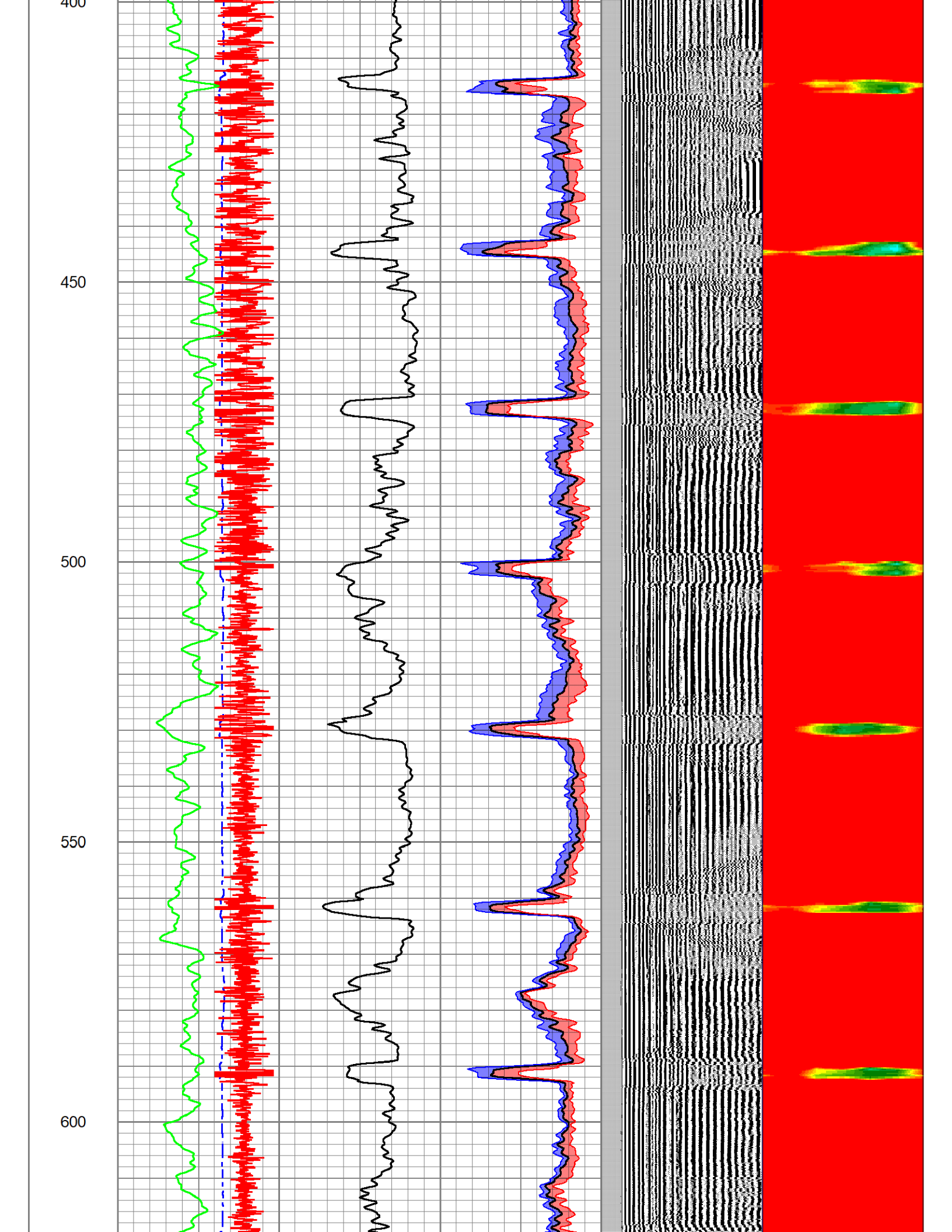
250

300

350

400



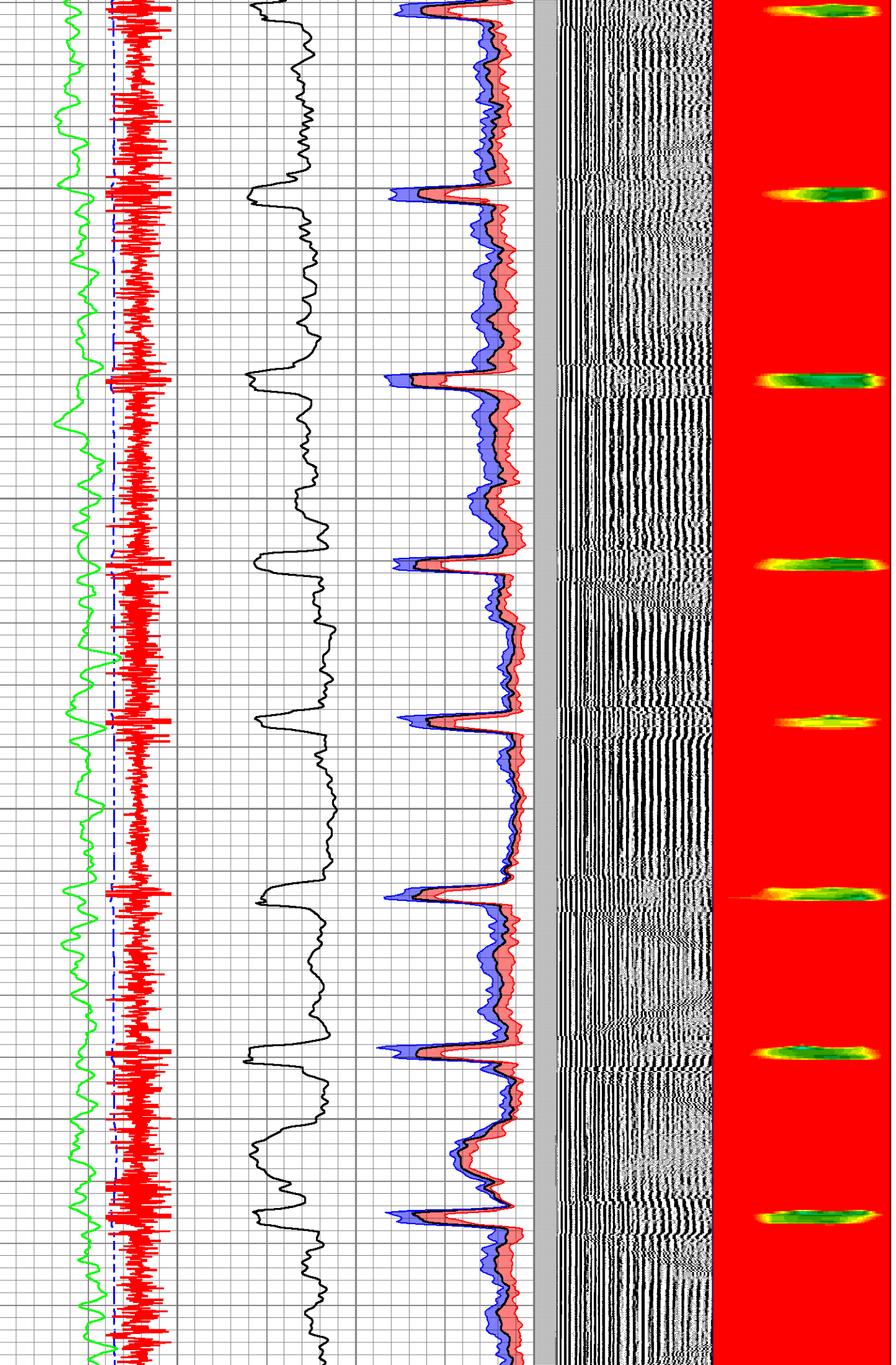


650

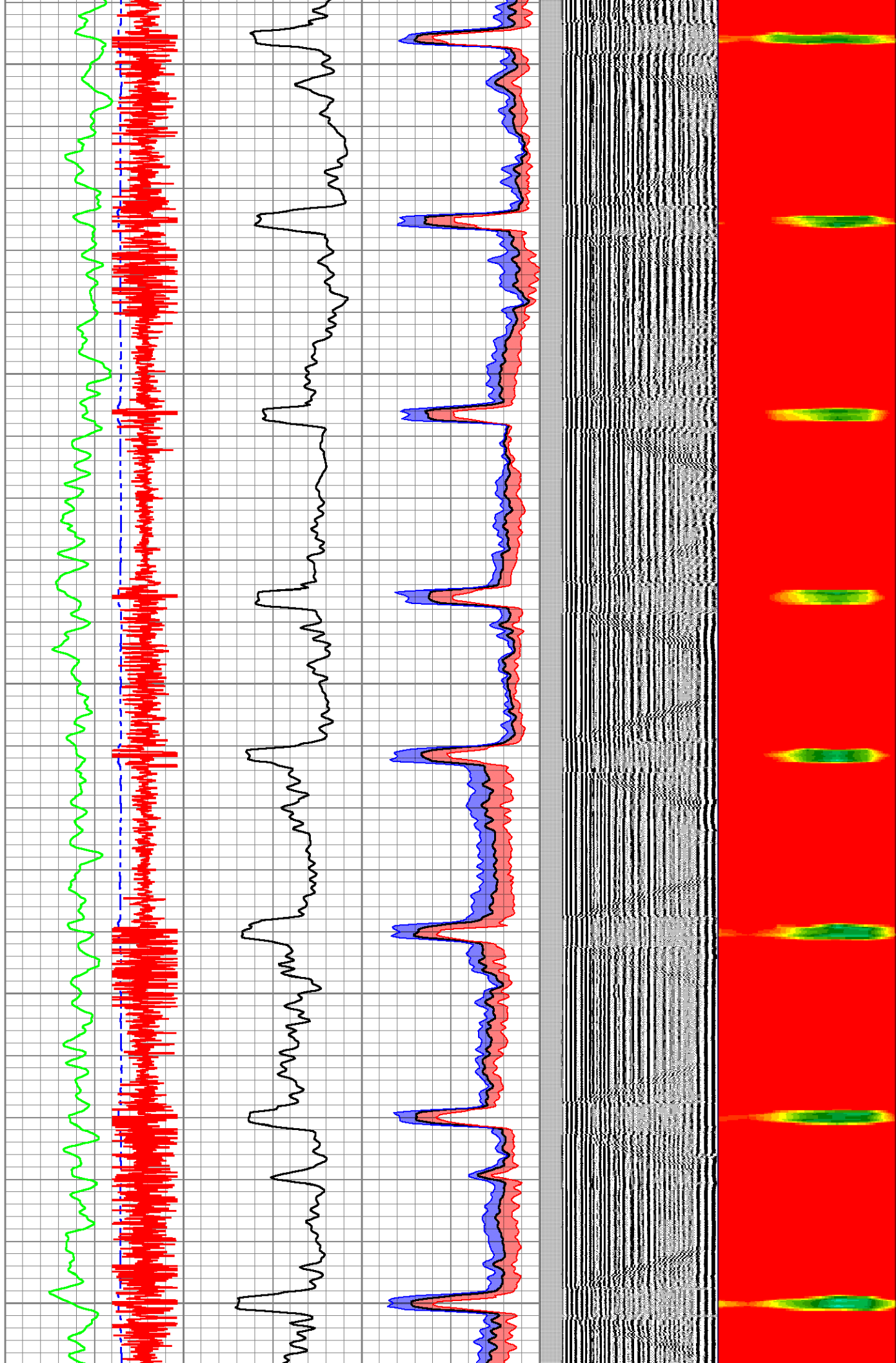
700

750

800



850  
900  
950  
1000  
1050

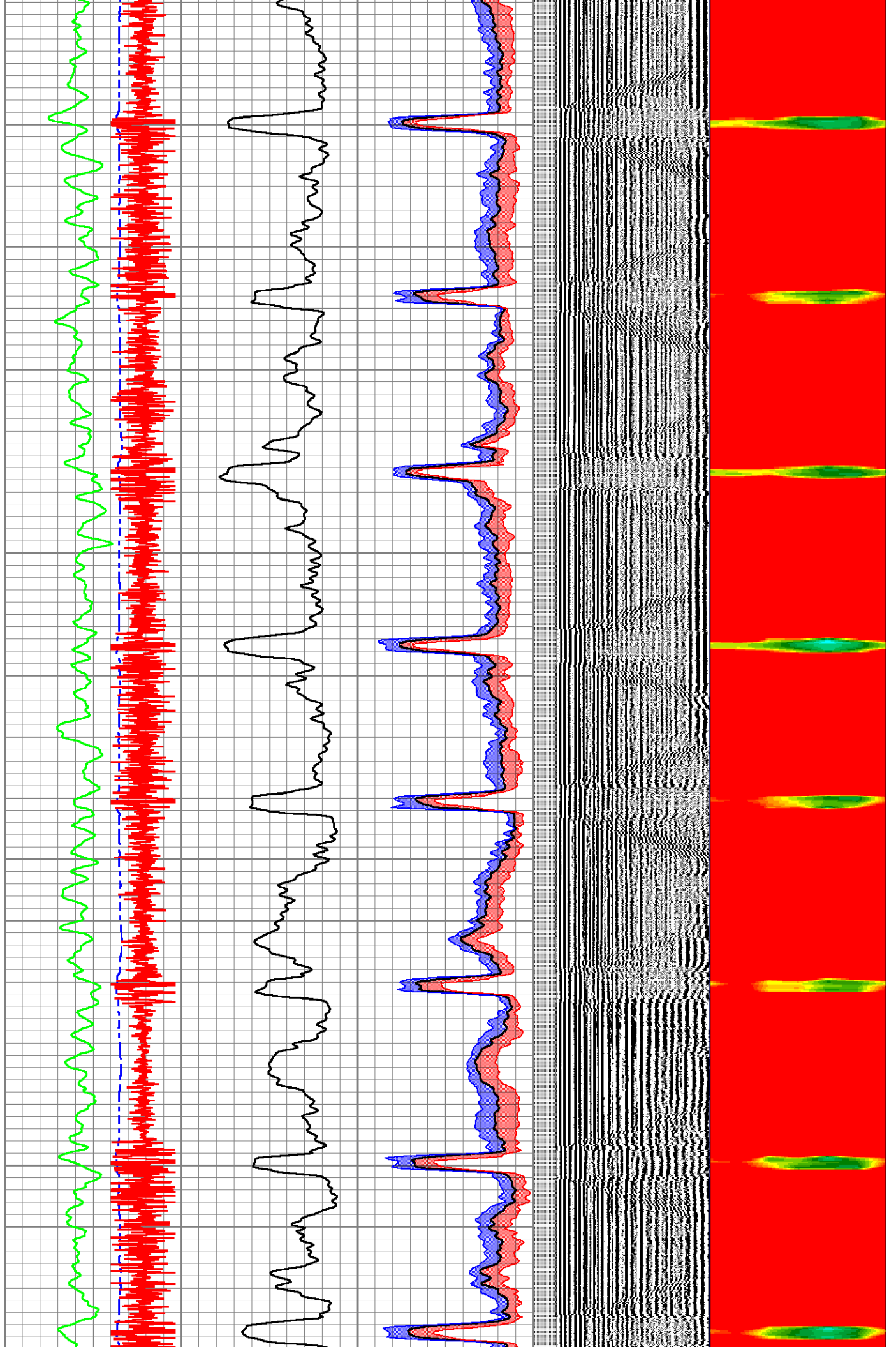


1100

1150

1200

1250



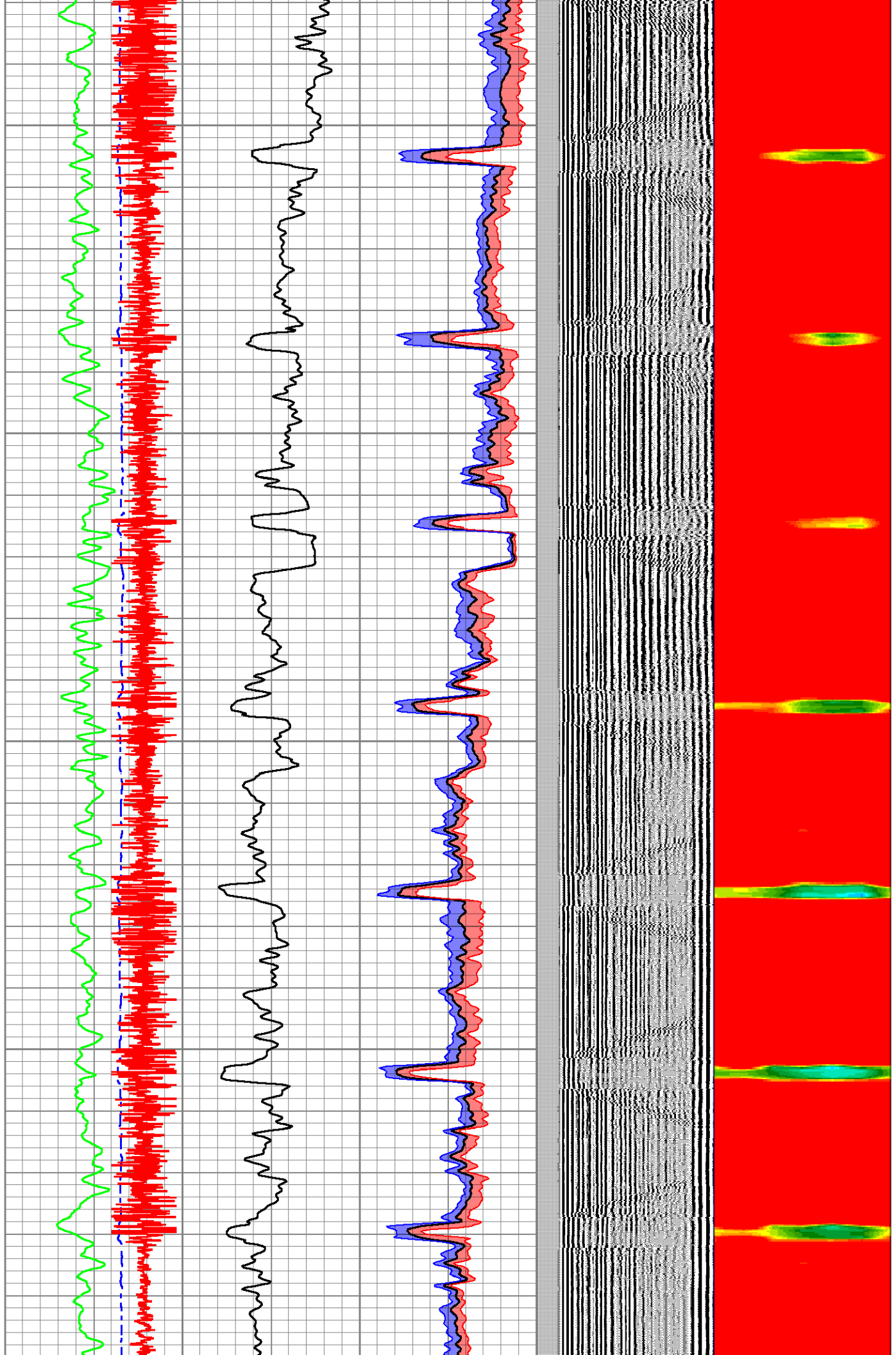
1300

1350

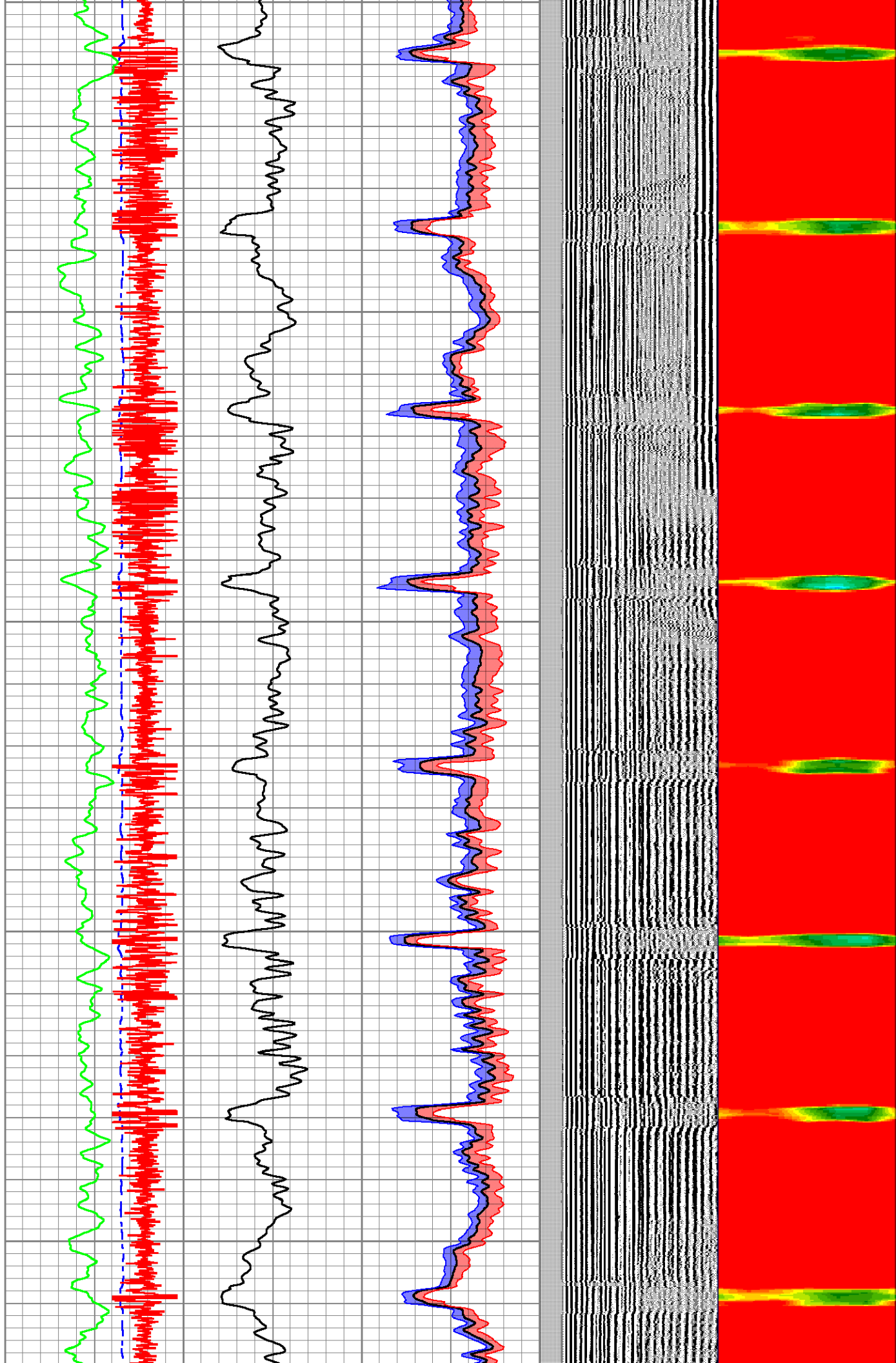
1400

1450

1500



1500  
1550  
1600  
1650  
1700

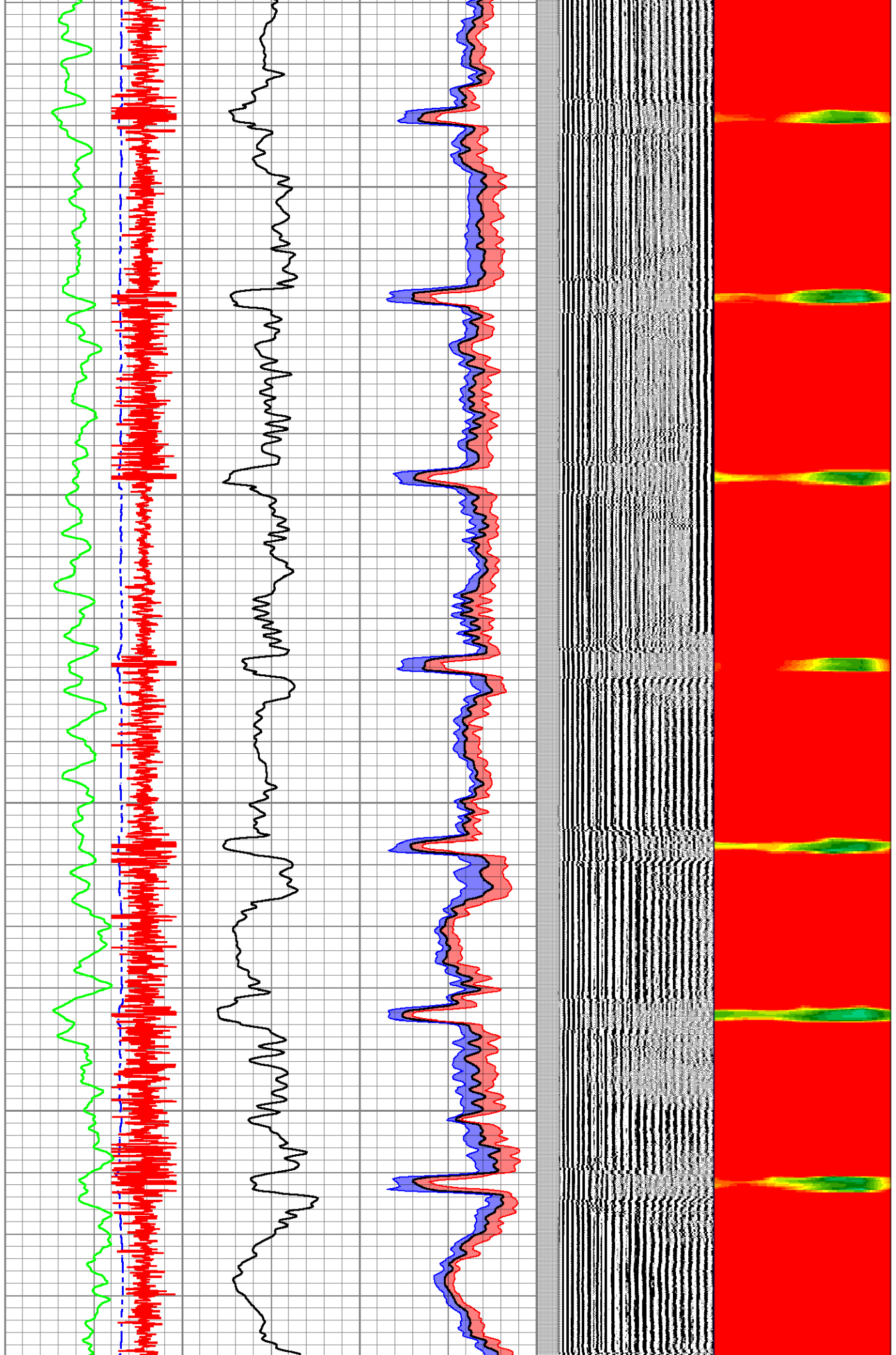


1750

1800

1850

1900



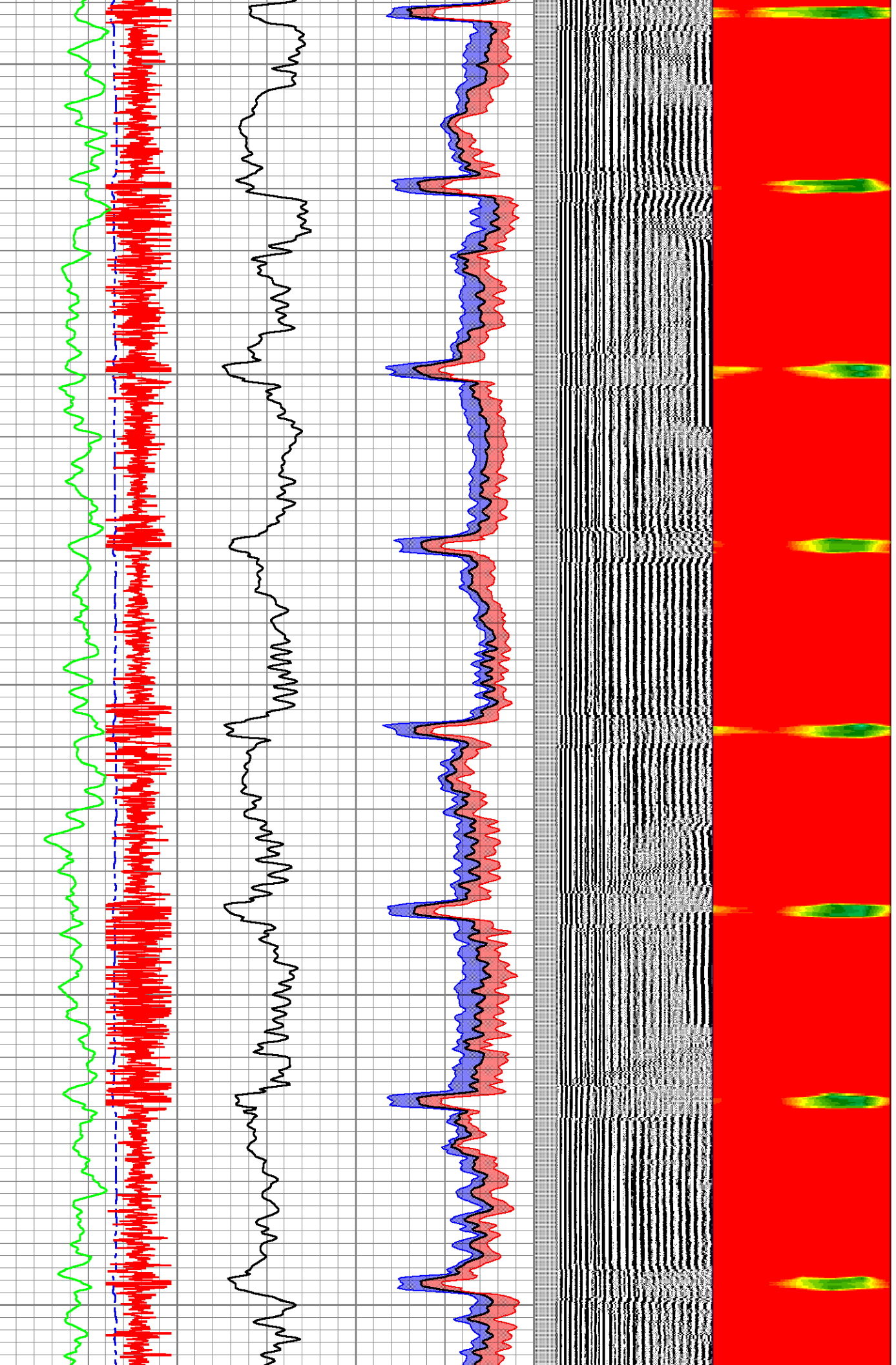
1950

2000

2050

2100

2150

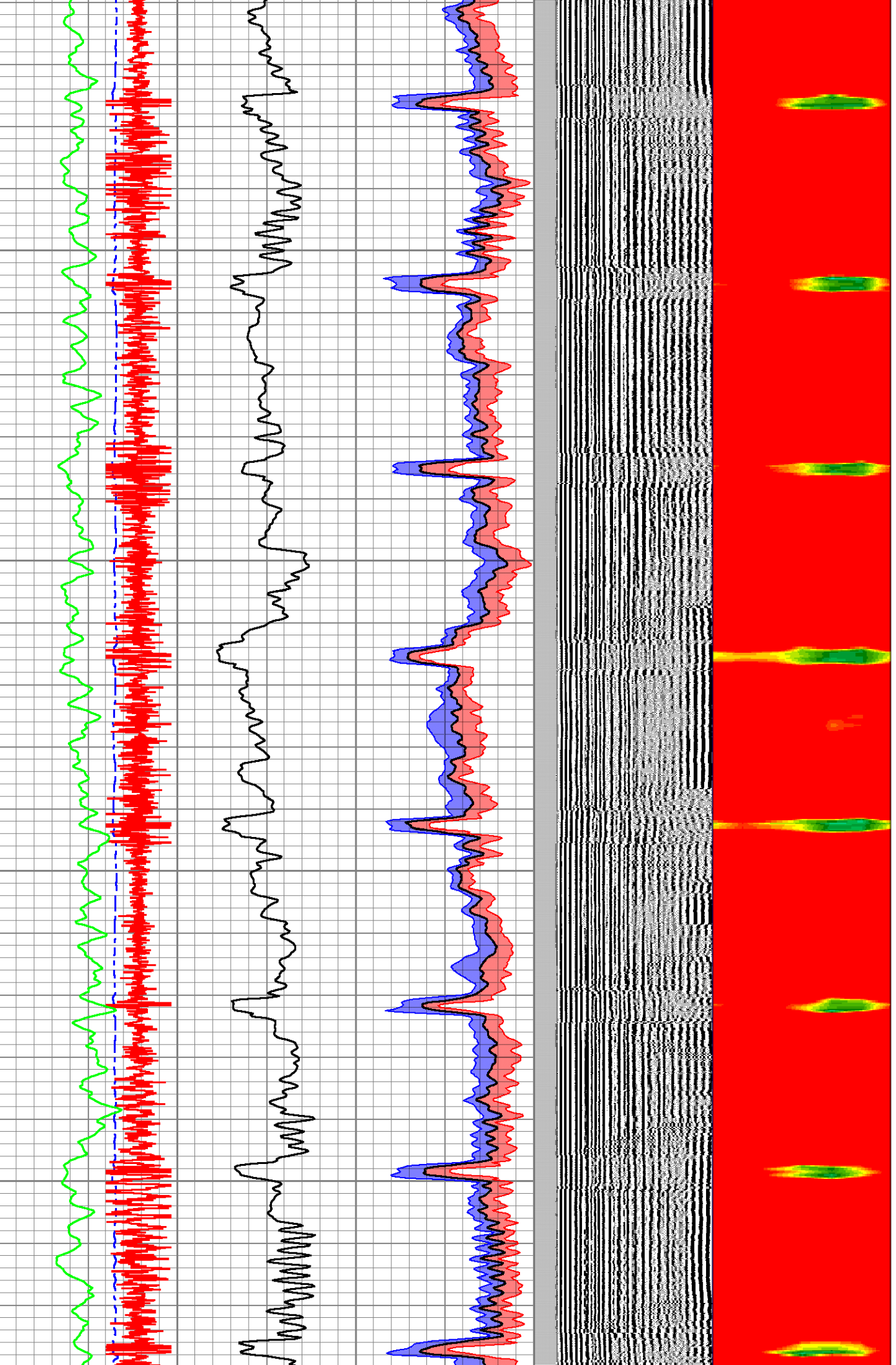


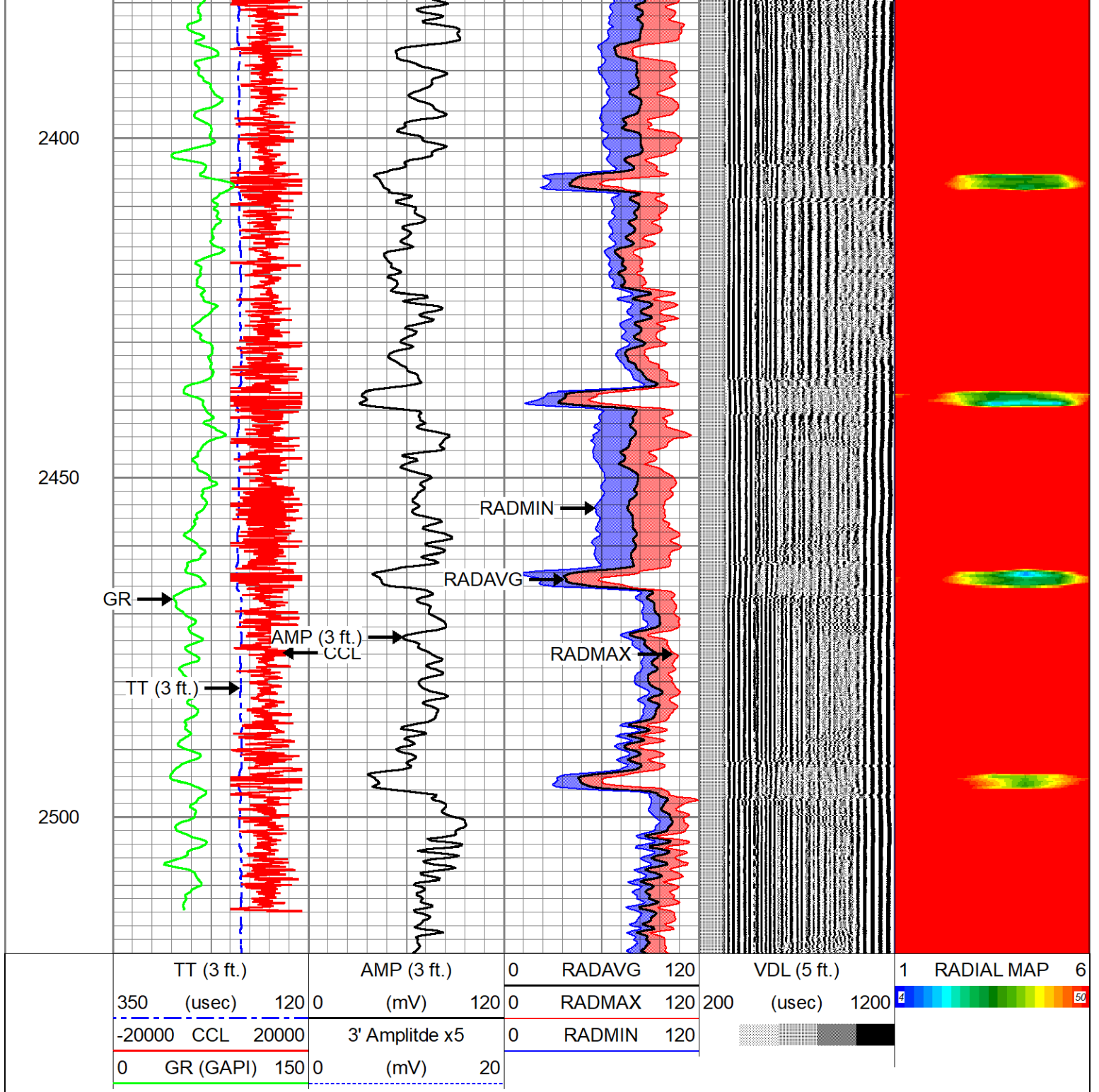
2200

2250

2300

2350





**Company** CHEVRON  
**Well** GOLLNER O 27-07  
**Field** WATTENBERG 90750  
**County** WELD  
**State** CO.

**Country** U.S.A.