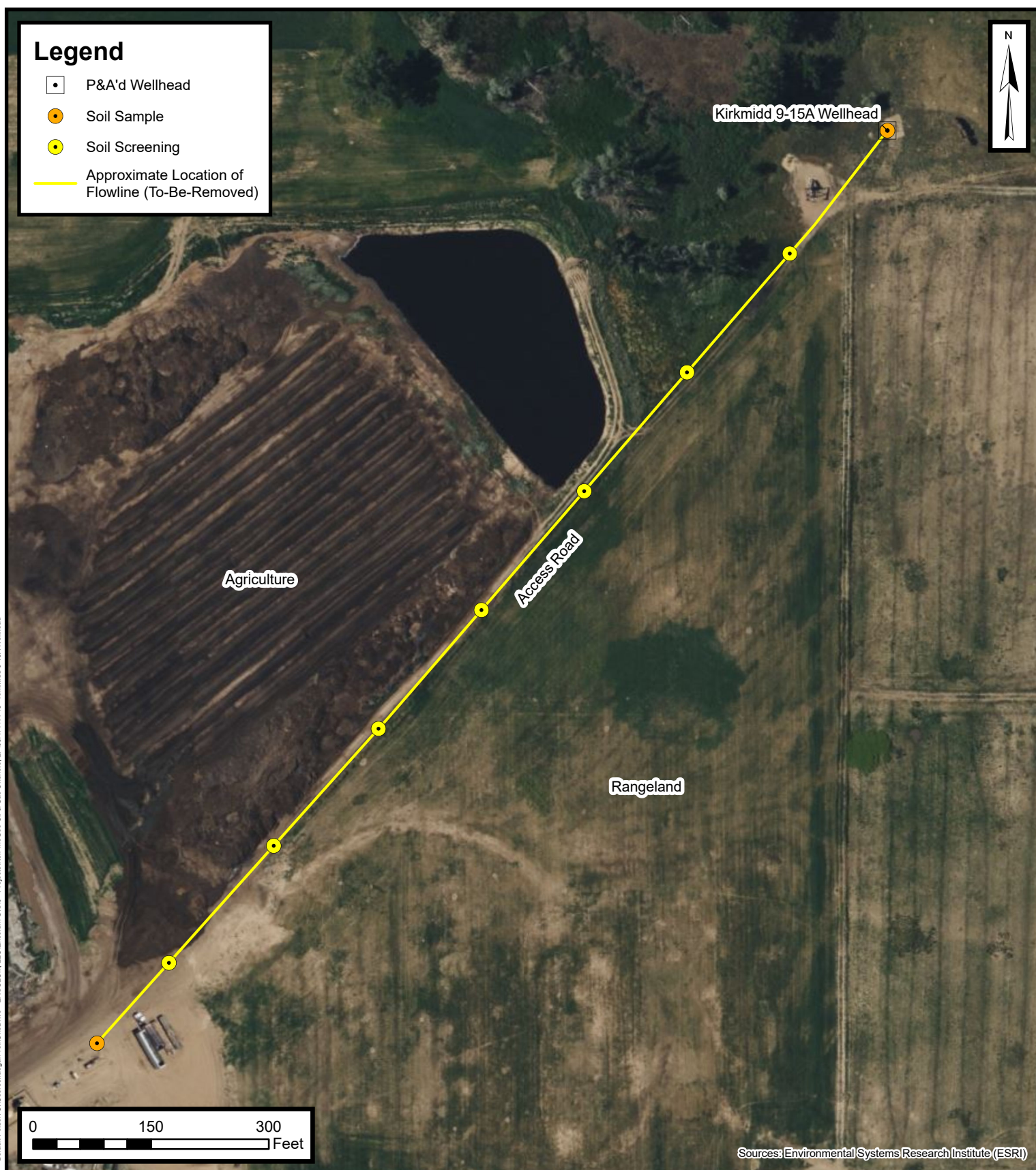


Default Folder: C:\Users\Mangan\OneDrive - ENSOLUM, LLC\Ensolium GIS0 - Projects\Kerr-McGee Oil & Gas Onshore, LP\09A1417743 - Kirkmid 9-15A Wellhead



Proposed Flowline Excavation and Soil Sampling Locations Map

Kirkmid 9-15A Flowline
Kerr-McGee Oil & Gas Onshore, LP
NESE SEC 15-T2N-R67W
Weld County, CO

Project Number: 09A1417743

FIGURE
3