



Well Services
E-LINE

**RADIAL BOND TOOL
GAMMA RAY
CCL**

Company NOBLE
Well CHESNUT G22-03
Field WATTENBERG
County WELD
State CO
Country USA

Company NOBLE
Well CHESNUT G22-03
Field WATTENBERG
County WELD
State CO
Country USA

Location: API #: 05-123-12188
LAT 40303256 LONG -104.651551
SEC 22 TWP 4N RGE 65W
Permanent Datum GL
Log Measured From KB 13'
Drilling Measured From GL

Elevation 4741'
Other Services
K.B. 4751'
D.F. 4749'
G.L. 4738'

Date 10-15-2021

Run Number ONE

Depth Driller 7220'

Depth Logger 1505'

Bottom Logged Interval 1509'

Top Log Interval SURFACE

Open Hole Size 8.625'

Type Fluid WATER

Density / Viscosity N/A

Max. Recorded Temp. 100.27°

Estimated Cement Top N/A

Time Well Ready ON ARRIVAL

Time Logger on Bottom N/A

Equipment Number 7770

Location GREELEY, CO

Recorded By CODY JENSEN

Witnessed By CY ADAMDREILING

Borehole Record				Tubing Record			
Run Number	Bit	From	To	Size	Weight	From	To


Casing Record	Size	Wgt/Ft	Top	Bottom
Surface String	8.625"	24#	SURFACE	522'
Prot. String				
Production String	4.5"	10.5#	SURFACE	7220'
Liner				

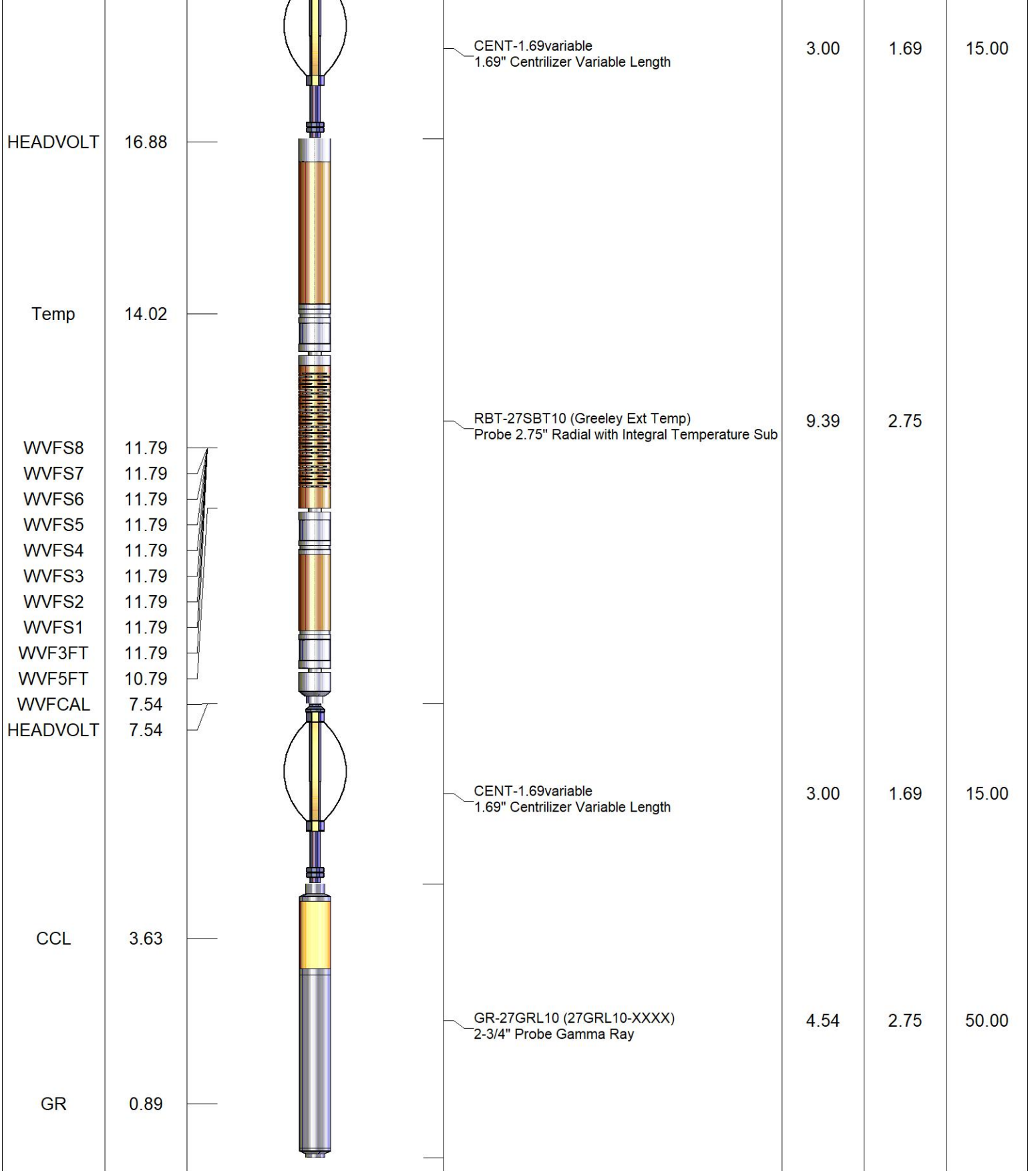
<<< Fold Here >>>

All interpretations are opinions based on inferences from electrical or other measurements and we cannot and do not guarantee the accuracy or correctness of any interpretation, and we shall not, except in the case of gross or willful negligence on our part, be liable or responsible for any loss, costs, damages, or expenses incurred or sustained by anyone resulting from any interpretation made by any of our officers, agents or employees. These interpretations are also subject to our general terms and conditions set out in our current Price Schedule.

Comments

**RAN CBL TO VERIFY CEMENT BOND
WELL LOADED UPON ARRIVAL**

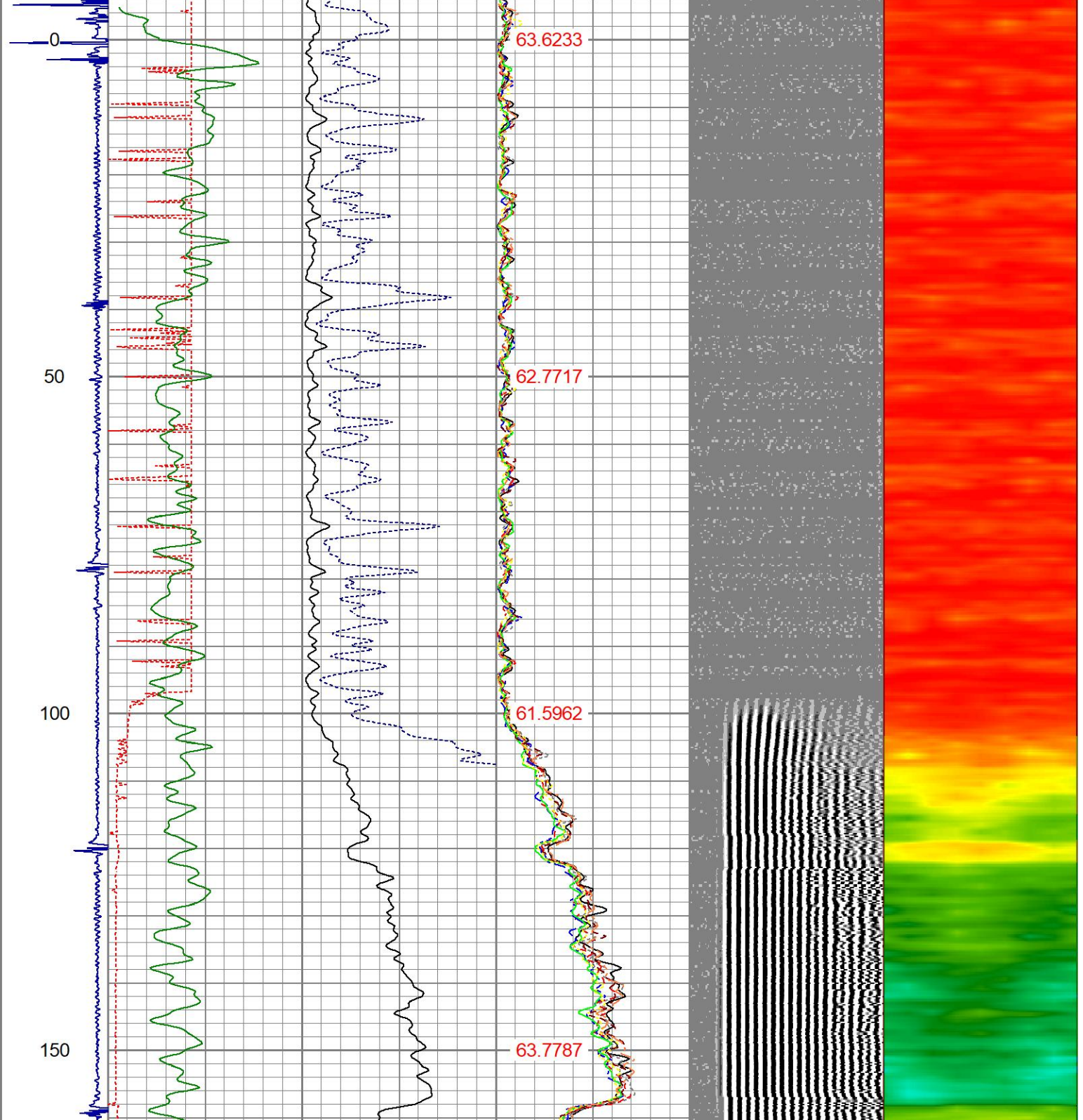
Sensor	Offset (ft)	Schematic	Description	Length (ft)	O.D. (in)	Weight (lb)
			CHD-1_11/16_Cablehead 1 11/16 Cablehead	1.00	1.68	5.00

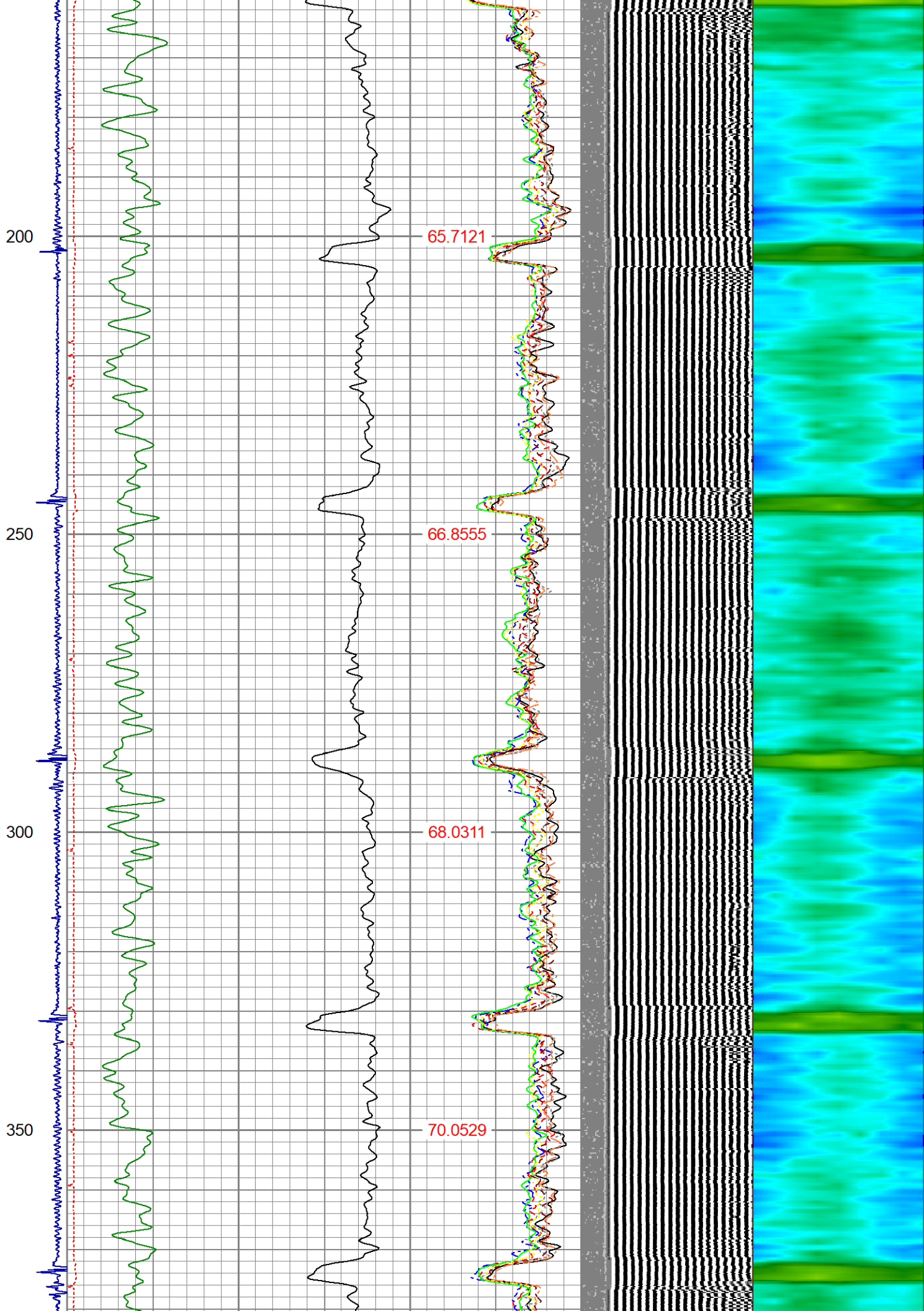


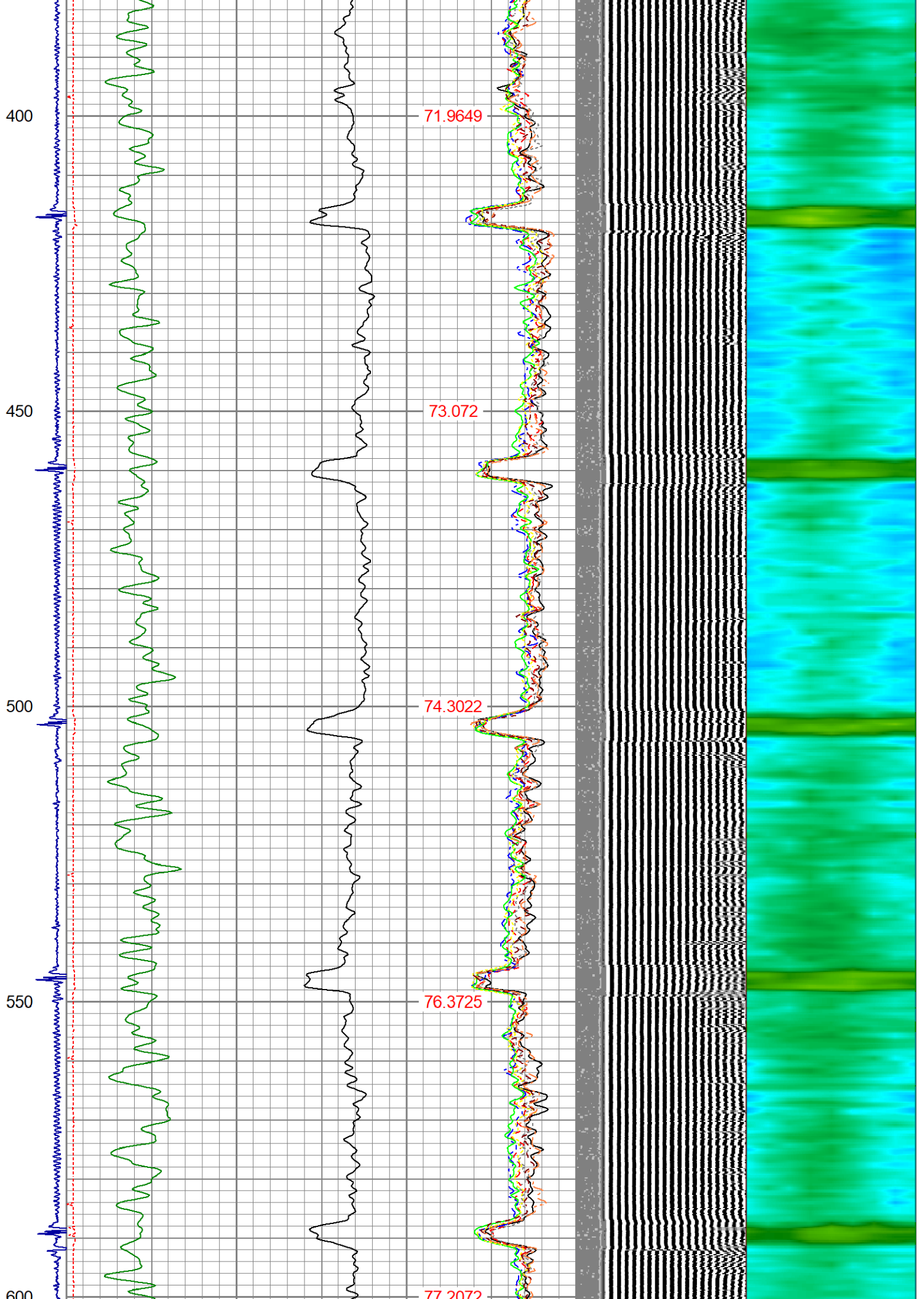
Dataset: chesnut g22-03.db: field/well/run1/pass68
 Total length: 20.93 ft
 Total weight: 85.00 lb
 O.D.: 2.75 in

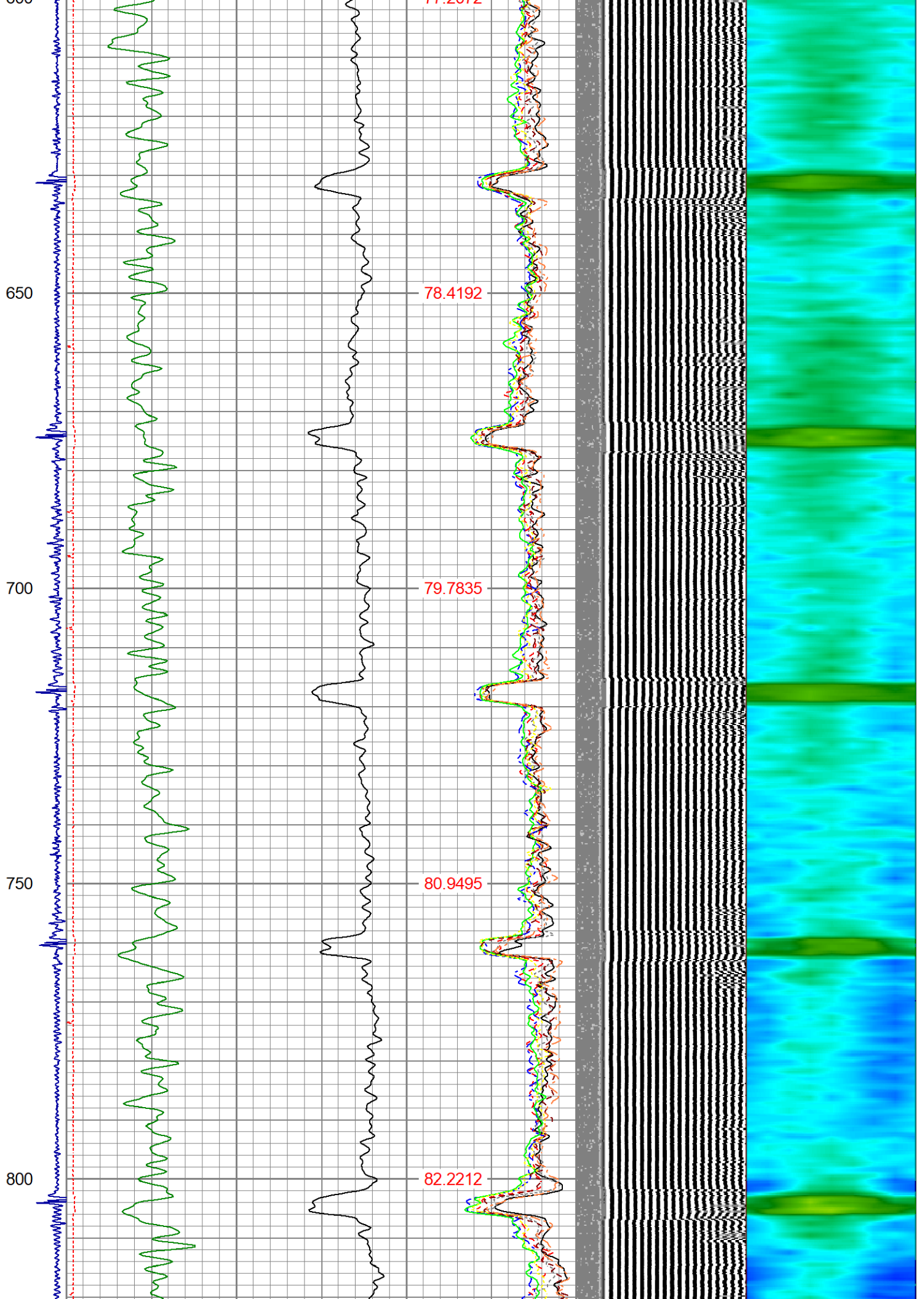
Database File chesnut g22-03.db
 Dataset Pathname pass68
 Presentation Format ips_rbtcolor
 Dataset Creation Fri Oct 15 08:57:34 2021
 Charted by Depth in Foot scaled 1:240

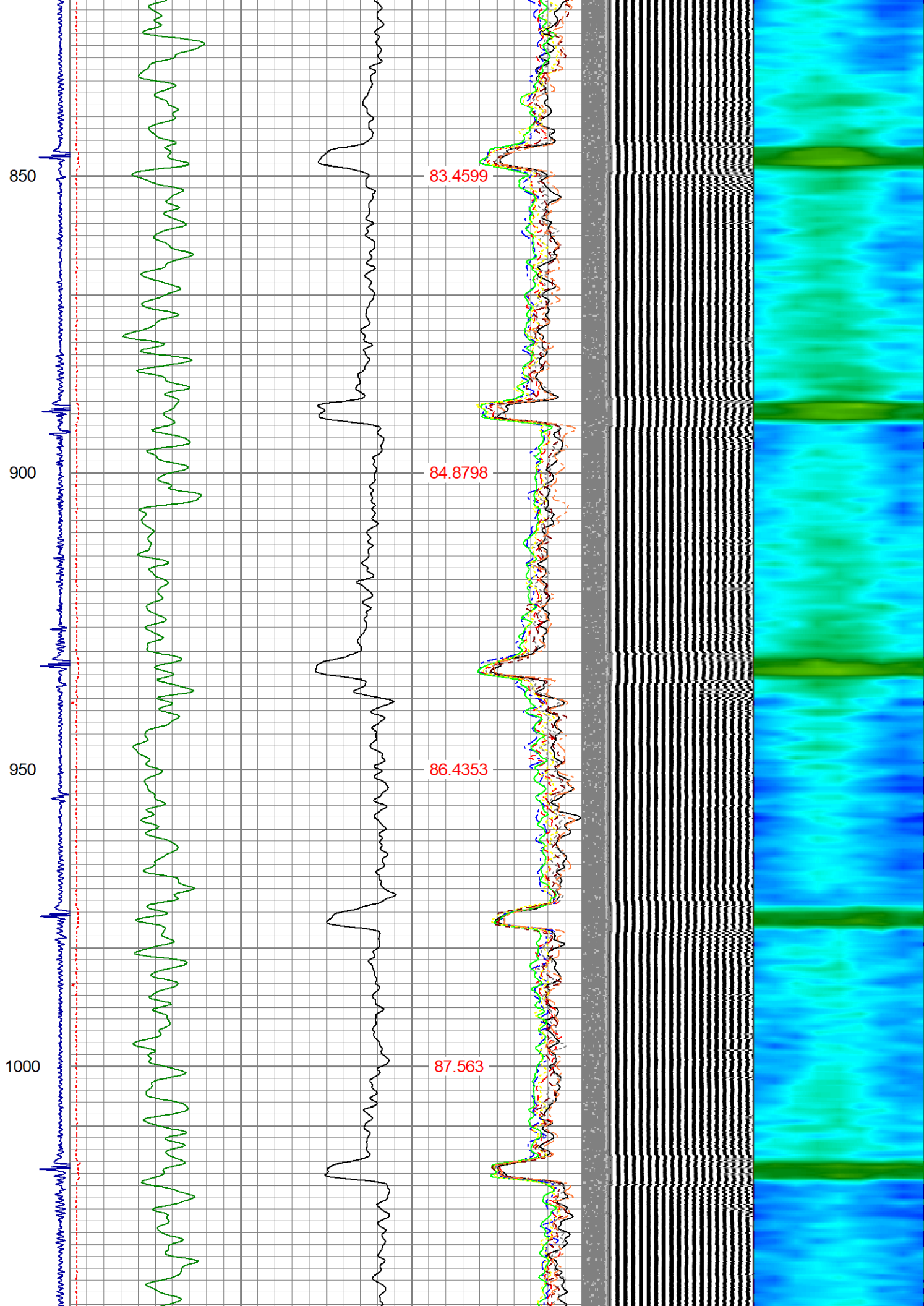
-9	CCL	1	200	TT (usec)	1000	0	AMP (mV)	100	0	AMPS1	100	200	VDL (usec)	1200	1	Cement Map	8
LSPD	0	GR (GAPI)	200	0	AMPx5 (mV)	20	0	AMPS2	100								
(ft/min)	200	GR (GAPI)	400					0	AMPS3	100							
0	250							0	AMPS4	100							
								0	AMPS5	100							
								0	AMPS6	100							
								0	AMPS7	100							
								0	AMPS8	100							
								TEMP									
								(degF)									

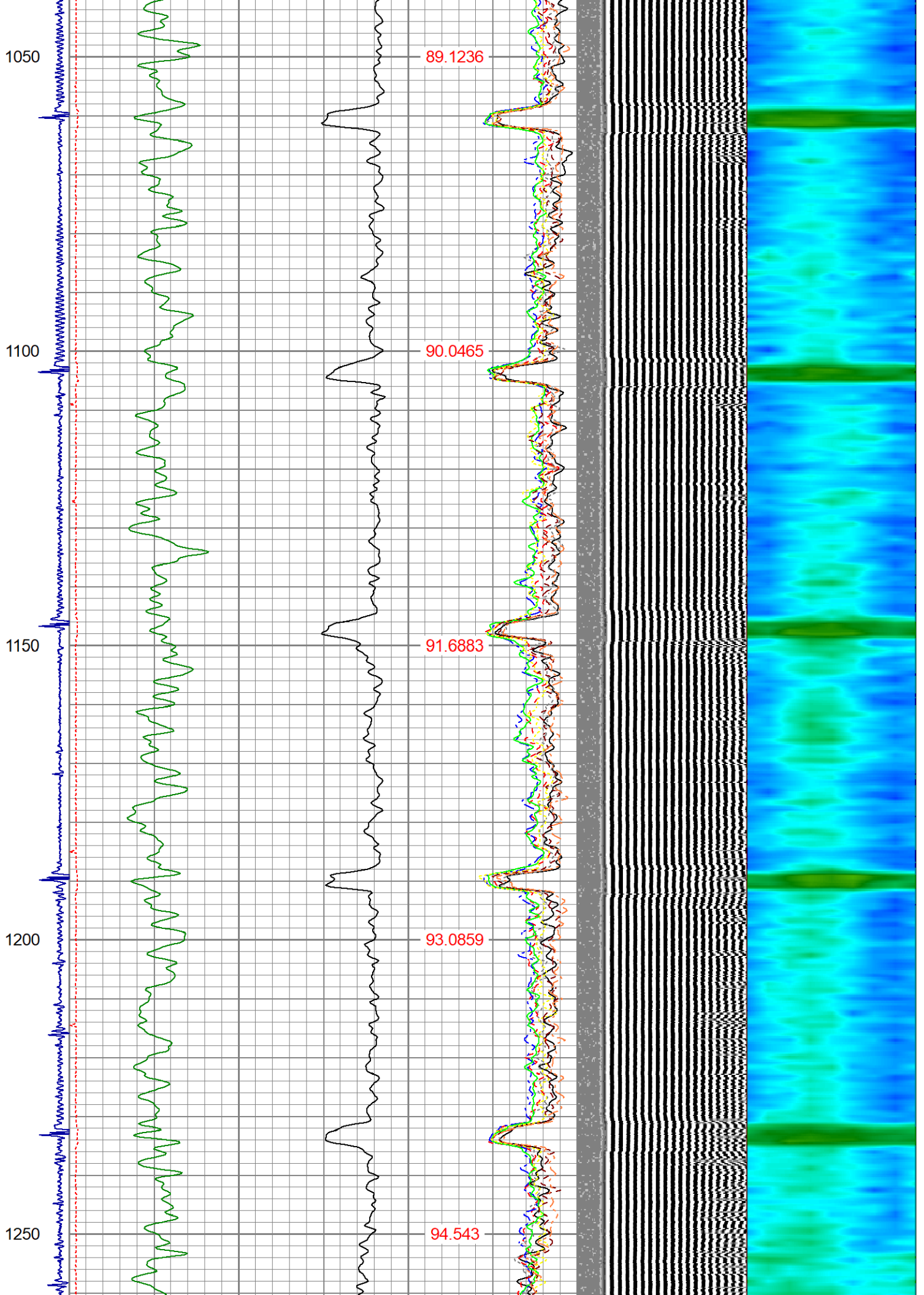


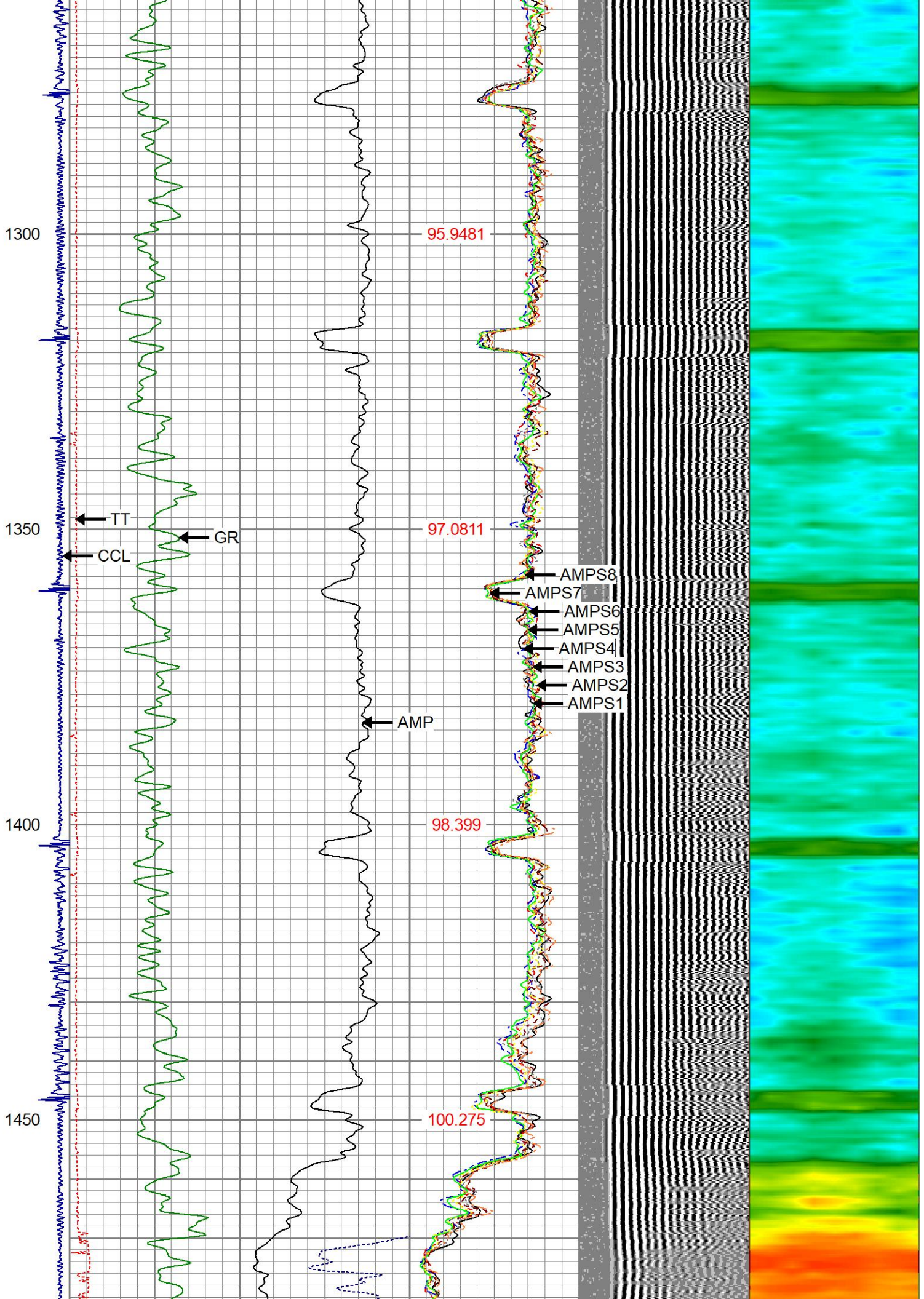


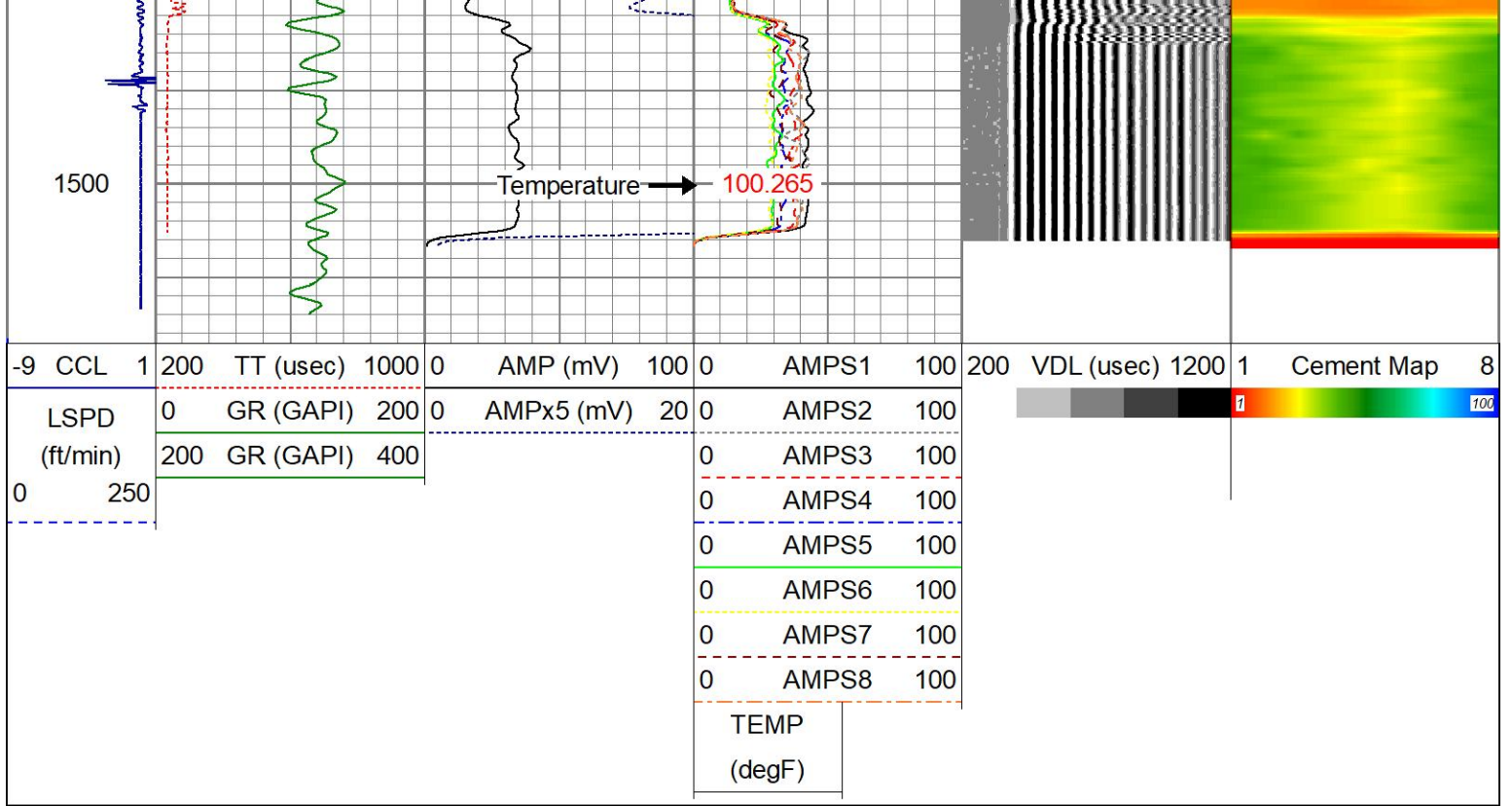












Calibration Report

Database File chesnut g22-03.db
 Dataset Pathname pass68
 Dataset Creation Fri Oct 15 08:57:34 2021

Gamma Ray Calibration Report

Serial Number: 27GRL10-XXXX
 Tool Model: 27GRL10
 Performed: (Not Performed)

Calibrator Value: 1.0 GAPI

Background Reading: 0.0 cps
 Calibrator Reading: 1.0 cps

Sensitivity: 1.0000 GAPI/cps

Segmented Cement Bond Log Calibration Report

Serial Number: Greeley Ext Temp
 Tool Model: 27SBT10

Calibration Casing Diameter: 4.500 in
 Calibration Depth: 834.308 ft

Master Calibration, performed Fri Oct 15 08:48:24 2021:

	Raw (v)		Calibrated (mv)		Results	
	Zero	Cal	Zero	Cal	Gain	Offset
3'	0.000	0.829	1.000	81.196	96.742	1.000
CAL	0.000	0.994				
5'	0.000	0.773	1.000	81.196	103.730	1.000
SUM						
S1	0.000	0.780	0.000	81.196	104.050	0.000
S2	0.000	0.812	0.000	81.196	99.986	0.000
S3	0.000	0.820	0.000	81.196	96.733	0.000

S3	0.000	0.839	0.000	81.196	96.722	0.000
S4	0.000	0.889	0.000	81.196	91.350	0.000
S5	0.000	0.882	0.000	81.196	92.079	0.000
S6	0.000	0.844	0.000	81.196	96.237	0.000
S7	0.000	0.799	0.000	81.196	101.638	0.000
S8	0.000	0.768	0.000	81.196	105.713	0.000

Internal Reference Calibration, performed (Not Performed):

	Raw (v)		Calibrated (v)		Results	
	Zero	Cal	Zero	Cal	Gain	Offset
CAL	0.000	0.000	0.000	0.994	1.000	0.000

Air Zero Calibration, performed Fri Oct 15 07:32:50 2021:

	Raw (v)		Calibrated (v)		Results	
	Zero		Zero		Offset	
3'	0.000		0.000		0.000	
5'	0.000		0.000		0.000	
SUM						
S1	0.000		0.000		0.000	
S2	0.000		0.000		0.000	
S3	0.000		0.000		0.000	
S4	0.000		0.000		0.000	
S5	0.000		0.000		0.000	
S6	0.000		0.000		0.000	
S7	0.000		0.000		0.000	
S8	0.000		0.000		0.000	



Well Services
E - L I N E

Company	NOBLE		
Well	CHESNUT G22-03		
Field	WATTENBERG		
County	WELD		
State	CO	Country	USA