

**SEDIMENT BASIN 1:**  
 BASIN - DEPTH 4.3'  
 TRIB. AREA: 15.15 AC  
 VOL. REQ'D: 67,257 CF  
 VOL. PROVIDED: 83,881 CF  
 BTM EL: 5494.0'  
 LOWEST ORIFICE EL: 5495.3'  
 SPILLWAY CREST EL: 5497.0'  
 SPILLWAY CREST LENGTH (CL): 30'  
 EMBANKMENT CREST EL: 5498.3'  
 8" RISER PIPE  
 WITH HOLE DIAMETER (HD): 2-1/16"

LEGEND	
HP	HIGH POINT ELEVATION
F-8.1'	WELL PAD CORNER STAKE DESIGN "C" CUT OR "F" FILL AT CORNER STAKE
EG EL-5552.1'	EXISTING GROUND ELEV. AT CORNER STAKE
FG EL-5512.9'	FINISHED GROUND ELEV. AT CORNER STAKE
DD	DIVERSION DITCH
IPC	RRB FOR CULVERT PROTECTION
RRA	RIP-RAP APRON

LEGEND	
OP	OUTLET PROTECTION
SB	SEDIMENT BASIN
SCL	SEDIMENT CONTROL LOG
BM	BERM
SF	SILT FENCE
[Green Box]	TOPSOIL AREA TO BE STRIPPED
[Red Box]	WORKING PAD SURFACE
[Dashed Red Box]	OIL & GAS LOCATION

LEGEND	
[Dashed Line]	PROPOSED WILDLIFE FENCE
[Dashed Line]	PROPOSED PIPELINE
[Dashed Line]	EXISTING PIPELINE
[Dashed Line]	EXISTING FENCE
[Dashed Line]	EXISTING TELEPHONE
[Dashed Line]	EXISTING R-O-W
[Dashed Line]	FUTURE R-O-W
[Dashed Line]	EXISTING OVERHEAD POWER
[Dashed Line]	EXISTING MAJOR CONTOUR
[Dashed Line]	EXISTING MINOR CONTOUR
[Dashed Line]	PIPELINE EASEMENT

WORKING PAD SURFACE DISTURBANCE = 9.16 ACRES  
 DISTURBANCE DURING CONSTRUCTION = 9.10 ACRES  
 TOTAL OIL & GAS LOCATION = 18.26 ACRES

**NOTES:**  
 • Contours shown at 1' intervals.  
 • Cut/Fill slopes 4:1 (Typ.).  
 • Overall working pad surface = 700' x 570'

NOTE: Earthwork calculations require a fill @ some of the location stakes for balance. All fill is to be compacted to a minimum of 95% of the maximum dry density obtained by AASHTO method 1-99.

REV: 02 04-16-24 D.J.G. (UPDATE TOPSOIL STRIPPING)  
**CRESTONE PEAK RESOURCES OPERATING LLC**

**ASPEN 3-65 15-14 SOUTH PAD**  
 W 1/2 SW 1/4, SECTION 15, T3S, R65W, 6th P.M.  
 ADAMS COUNTY, COLORADO

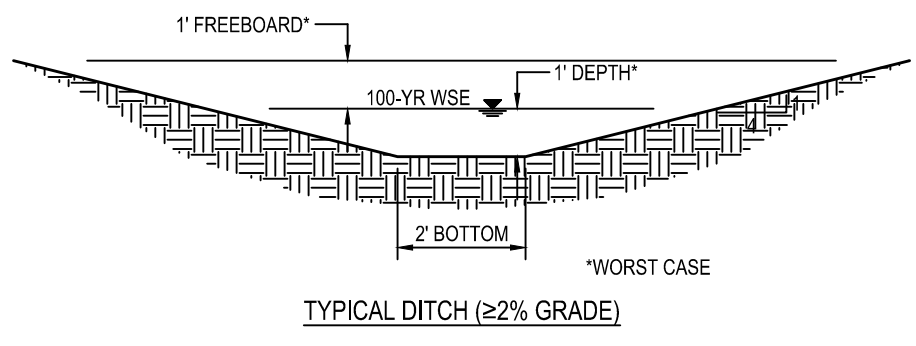
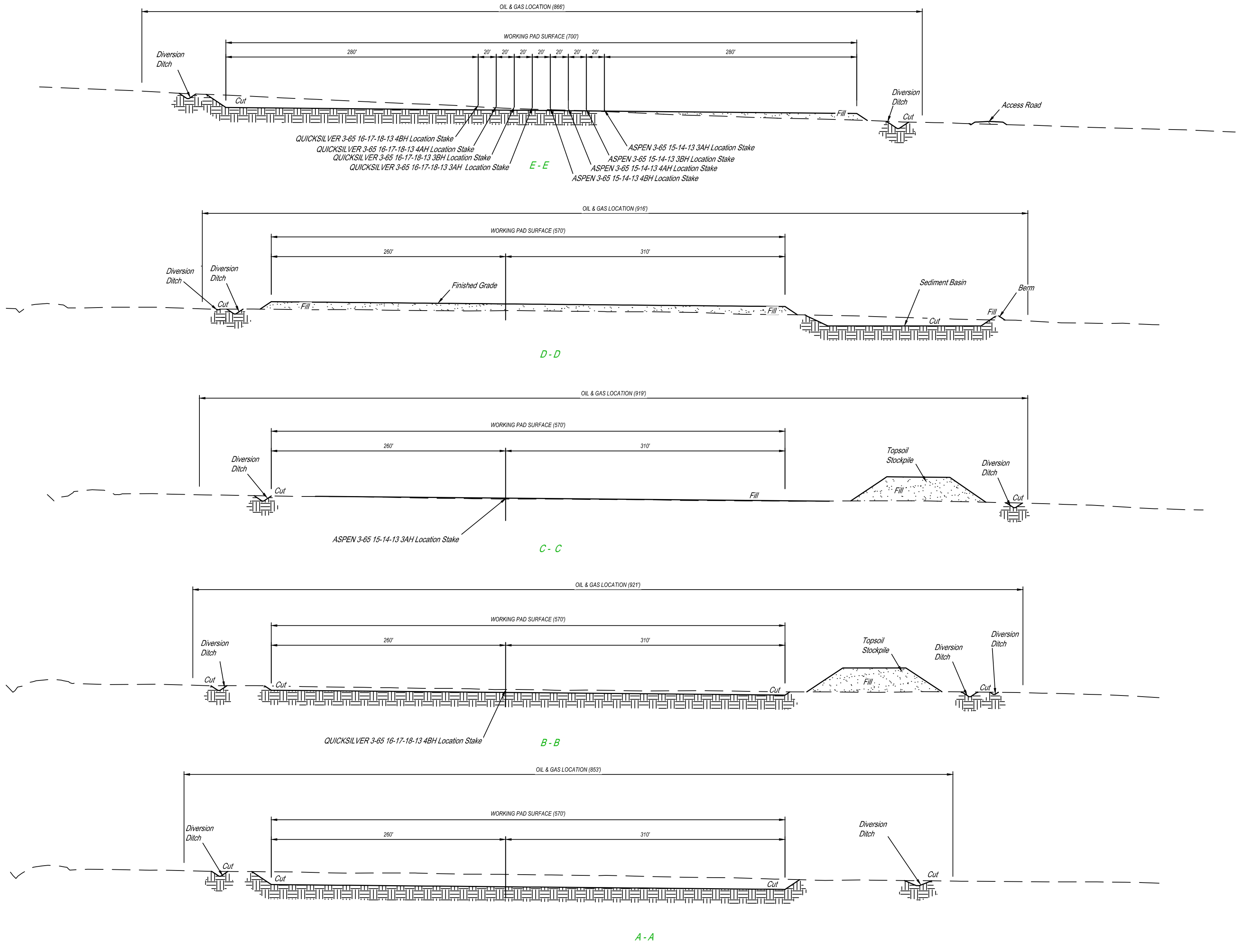
**UELS, LLC**  
 Corporate Office \* 85 South 200 East  
 Vernal, UT 84078 \* (435) 789-1017

UJINTAH  
 ENGINEERING & LAND SURVEYING

SURVEYED BY	ORION RICE, N.W.	11-23-21	SCALE
DRAWN BY	M.D.	02-08-22	1" = 80'

**CONSTRUCTION LAYOUT - PLAN VIEW**

1" = 30'  
X-Section  
Scale  
1" = 80'



APPROXIMATE EARTHWORK QUANTITIES	
(11") TOPSOIL STRIPPING	16,050 Cu. Yds.
WELL PAD CUT	14,570 Cu. Yds.
ACCESS ROAD CUT	60 Cu. Yds.
DITCH & SED BASIN CUT	6,580 Cu. Yds.
<b>TOTAL CUT</b>	<b>37,260 Cu. Yds.</b>
WELL PAD FILL	19,430 Cu. Yds.
ACCESS ROAD FILL	1,520 Cu. Yds.
DITCH & SED BASIN FILL	260 Cu. Yds.
<b>TOTAL FILL</b>	<b>21,210 Cu. Yds.</b>
EXCESS MATERIAL	16,050 Cu. Yds.
TOPSOIL	16,050 Cu. Yds.
<b>DEFICIT UNBALANCE</b>	<b>0 Cu. Yds.</b>
GRAVEL BASE ON PAD (6")	7,390 Cu. Yds.

APPROXIMATE WELL SITE DISTURBANCE AREAS	
WORKING PAD SURFACE DISTURBANCE	±9.16 ACRES
CONSTRUCTION DISTURBANCE	±9.10
<b>TOTAL OIL &amp; GAS LOCATION</b>	<b>±18.26</b>

APPROXIMATE SURFACE DISTURBANCE AREAS		
	DISTANCE	ACRES
WELL SITE DISTURBANCE	NA	±18.26
ACCESS ROAD DISTURBANCE	±678'	±1.05
<b>TOTAL SURFACE USE AREA</b>		<b>±19.31</b>

**NOTES:**  
 • Fill quantity includes 10% for compaction.  
 • Calculations based on 11" of topsoil stripping.  
 • Cut/Fill slopes 4:1 (Typ.).

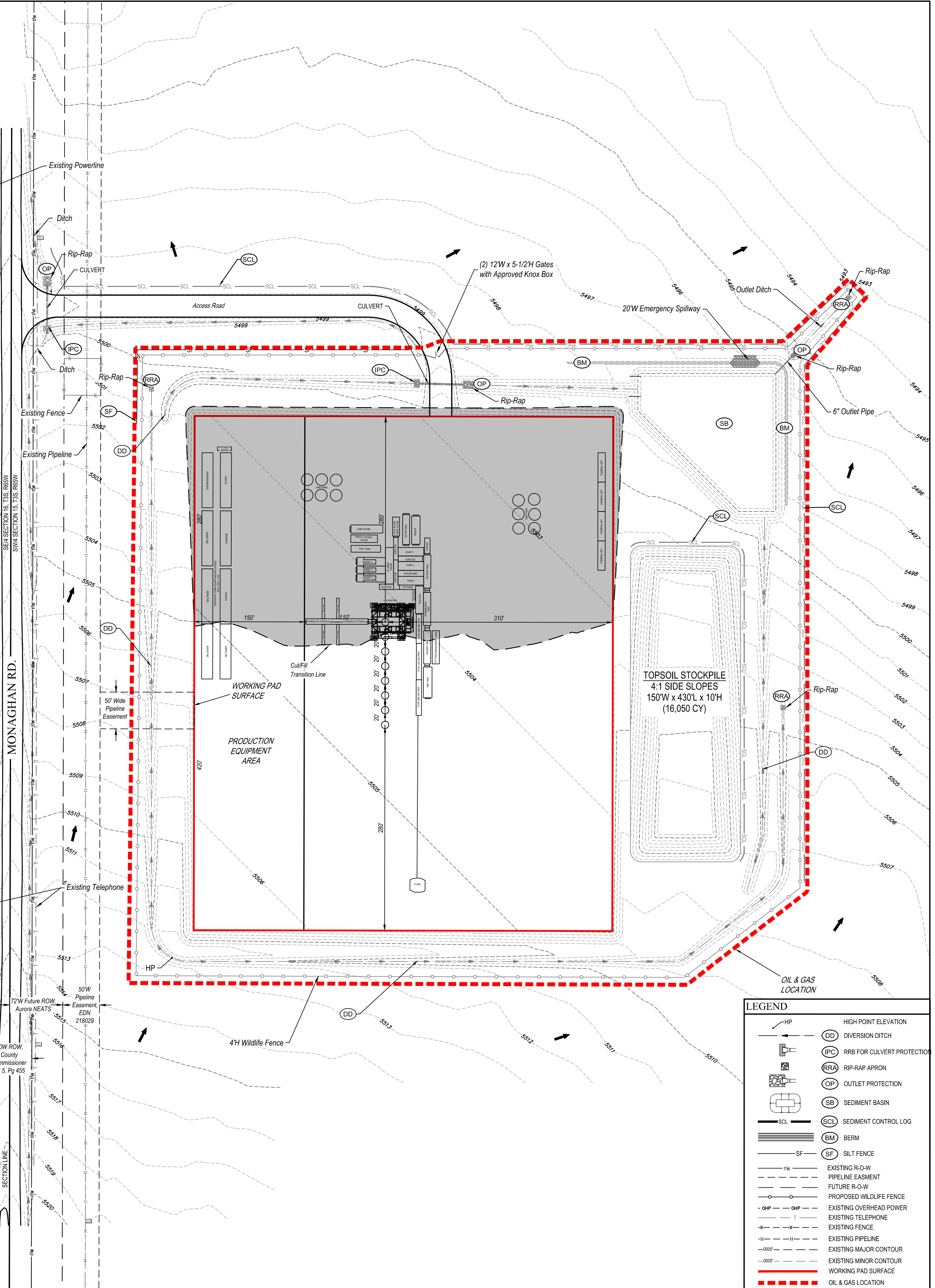
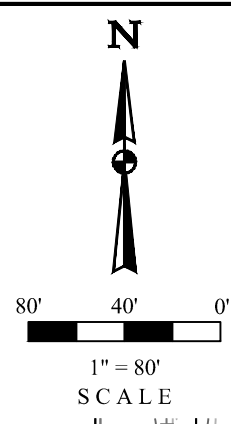
**UELS, LLC**  
 Corporate Office \* 85 South 200 East  
 Vernal, UT 84078 \* (435) 789-1017

REV: 02 04-16-24 D.J.G. (CORRECT ACCESS DISTANCE)  
**CRESTONE PEAK RESOURCES OPERATING LLC**

**ASPEN 3-65 15-14 SOUTH PAD**  
 W 1/2 SW 1/4, SECTION 15, T3S, R65W, 6th P.M.  
 ADAMS COUNTY, COLORADO

SURVEYED BY	ORION RICE, N.W.	11-23-21	SCALE
DRAWN BY	M.D.	02-08-22	AS SHOWN

**CONSTRUCTION LAYOUT - CROSS SECTIONS**



LEGEND	
	HIGH POINT ELEVATION
	DIVERSION DITCH
	RRB FOR CULVERT PROTECTION
	RIP-RAP APRON
	OUTLET PROTECTION
	SEDIMENT BASIN
	SEDIMENT CONTROL LOG
	BERM
	SILT FENCE
	EXISTING R-O-W
	PIPELINE EASEMENT
	FUTURE R-O-W
	PROPOSED WILDLIFE FENCE
	EXISTING OVERHEAD POWER
	EXISTING TELEPHONE
	EXISTING FENCE
	EXISTING PIPELINE
	EXISTING MAJOR CONTOUR
	EXISTING MINOR CONTOUR
	WORKING PAD SURFACE
	OIL & GAS LOCATION

**NOTES:**  
 • Contours shown at 1' intervals.  
 • Overall working pad surface = 700' x 570'

CRESTONE PEAK RESOURCES OPERATING LLC

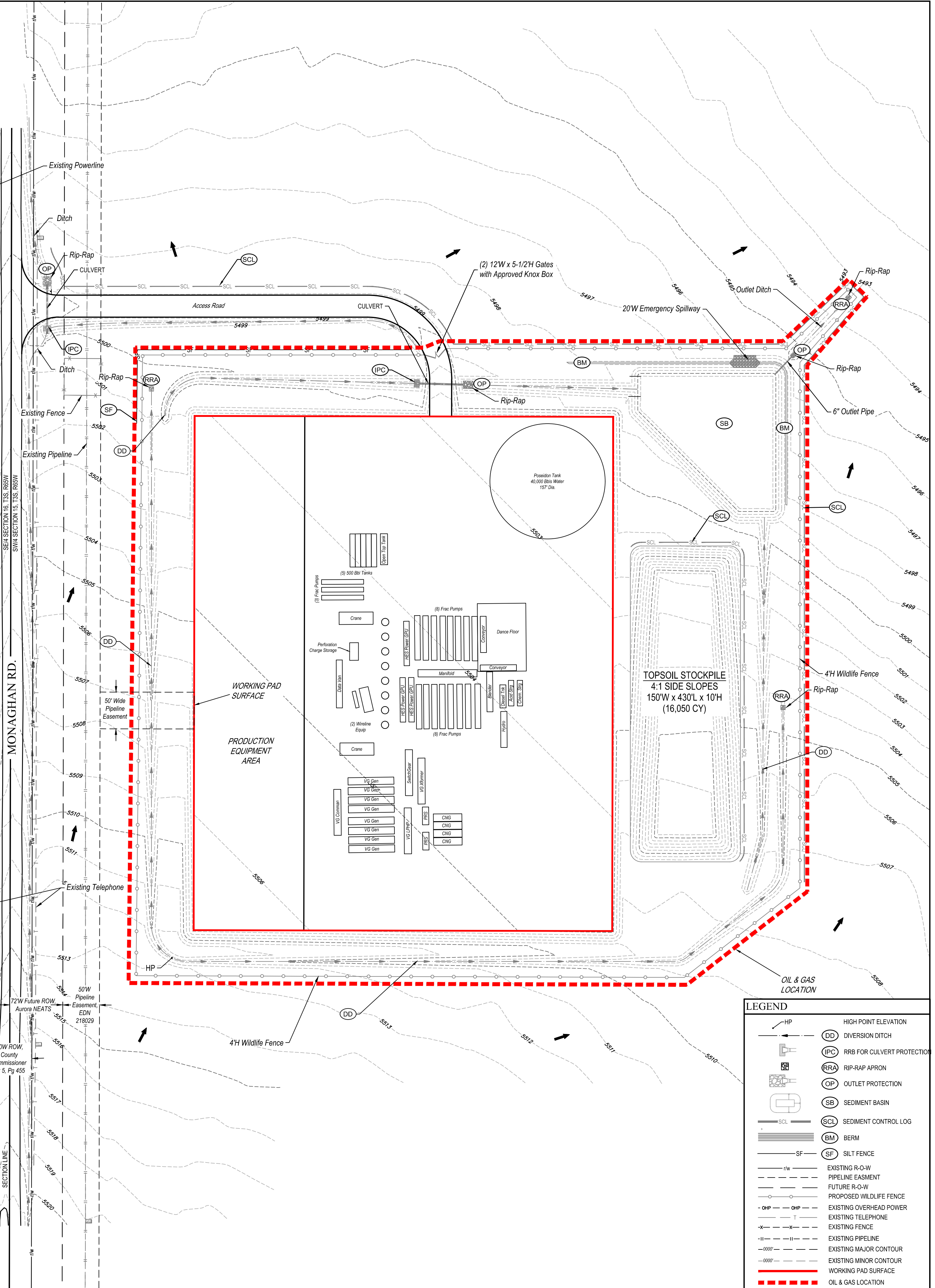
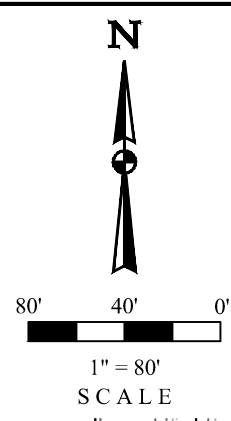
ASPEN 3-65 15-14 SOUTH PAD  
 W 1/2 SW 1/4, SECTION 15, T3S, R65W, 6th P.M.  
 ADAMS COUNTY, COLORADO

**UELS, LLC**  
 Corporate Office \* 85 South 200 East  
 Vernal, UT 84078 \* (435) 789-1017

SURVEYED BY	ORION RICE, N.W.	11-23-21	SCALE
DRAWN BY	M.D.	02-08-22	1" = 80'

REV: 02 04-16-24 D.J.G. (ADDED PIPELINE EASEMENT)

**PRELIMINARY DRILL RIG LAYOUT**



LEGEND	
	HIGH POINT ELEVATION
	DIVERSION DITCH
	RRB FOR CULVERT PROTECTION
	RIP-RAP APRON
	OUTLET PROTECTION
	SEDIMENT BASIN
	SEDIMENT CONTROL LOG
	BERM
	SILT FENCE
	EXISTING R-O-W
	PIPELINE EASEMENT
	FUTURE R-O-W
	PROPOSED WILDLIFE FENCE
	EXISTING OVERHEAD POWER
	EXISTING TELEPHONE
	EXISTING FENCE
	EXISTING PIPELINE
	EXISTING MAJOR CONTOUR
	EXISTING MINOR CONTOUR
	WORKING PAD SURFACE
	OIL & GAS LOCATION

**NOTES:**  
 • Contours shown at 1' intervals.  
 • Overall working pad surface = 700' x 570'

**CRESTONE PEAK RESOURCES OPERATING LLC**

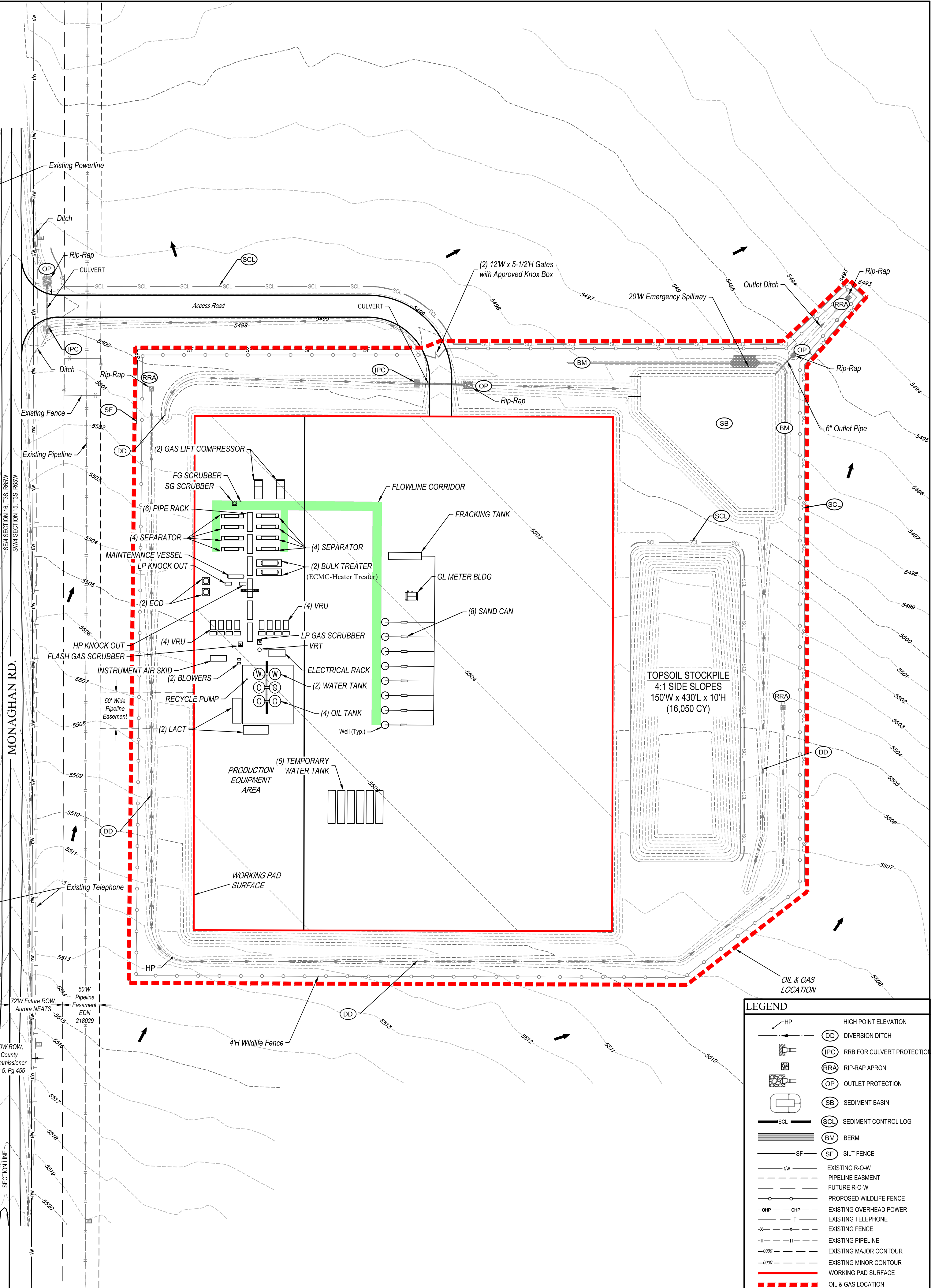
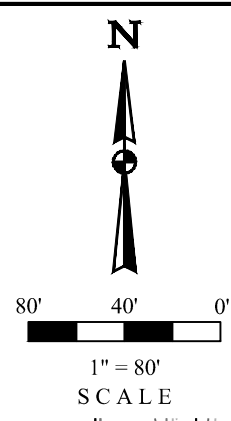
**ASPEN 3-65 15-14 SOUTH PAD  
 W 1/2 SW 1/4, SECTION 15, T3S, R65W, 6th P.M.  
 ADAMS COUNTY, COLORADO**

**UELS, LLC**  
 Corporate Office \* 85 South 200 East  
 Vernal, UT 84078 \* (435) 789-1017

SURVEYED BY	ORION RICE, N.W.	11-23-21	SCALE
DRAWN BY	M.D.	02-08-22	1" = 80'

REV: 02 04-16-24 D.J.G. (ADDED PIPELINE EASEMENT)

**PRELIMINARY WELL COMPLETION & STIMULATION LAYOUT**



LEGEND	
	HIGH POINT ELEVATION
	DIVERSION DITCH
	RRB FOR CULVERT PROTECTION
	RIP-RAP APRON
	OUTLET PROTECTION
	SEDIMENT BASIN
	SEDIMENT CONTROL LOG
	BERM
	SILT FENCE
	EXISTING R-O-W
	PIPELINE EASEMENT
	FUTURE R-O-W
	PROPOSED WILDLIFE FENCE
	EXISTING OVERHEAD POWER
	EXISTING TELEPHONE
	EXISTING FENCE
	EXISTING PIPELINE
	EXISTING MAJOR CONTOUR
	EXISTING MINOR CONTOUR
	WORKING PAD SURFACE
	OIL & GAS LOCATION

**NOTES:**  
 • Contours shown at 1' intervals.  
 • Overall working pad surface = 700' x 570'

CRESTONE PEAK RESOURCES OPERATING LLC

ASPEN 3-65 15-14 SOUTH PAD  
 W 1/2 SW 1/4, SECTION 15, T3S, R65W, 6th P.M.  
 ADAMS COUNTY, COLORADO

**UELS, LLC**  
 Corporate Office \* 85 South 200 East  
 Vernal, UT 84078 \* (435) 789-1017

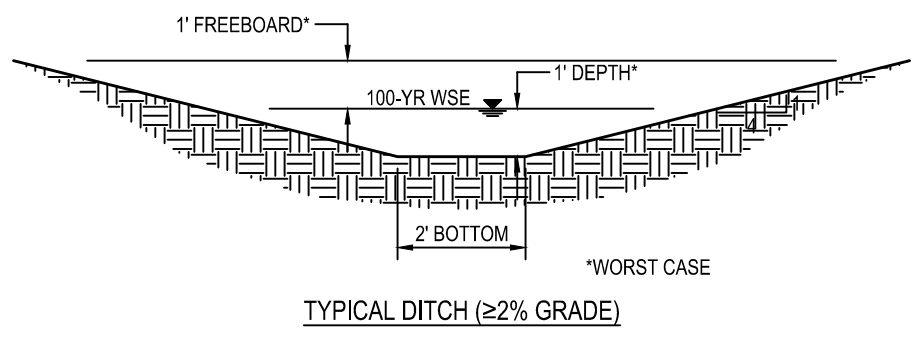
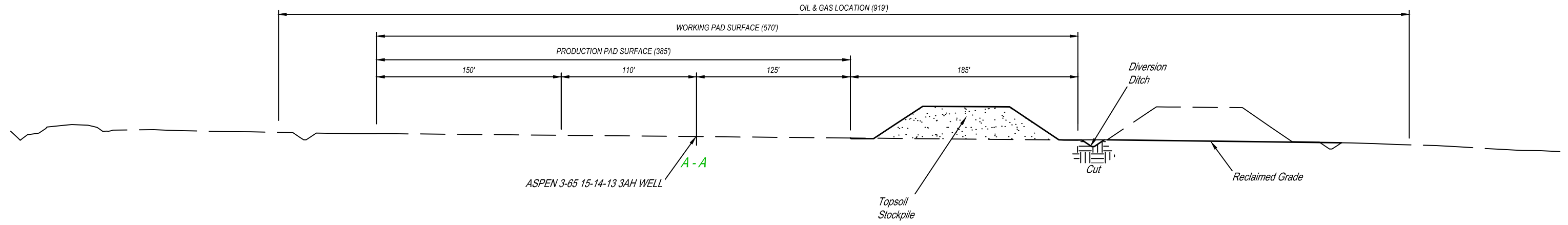
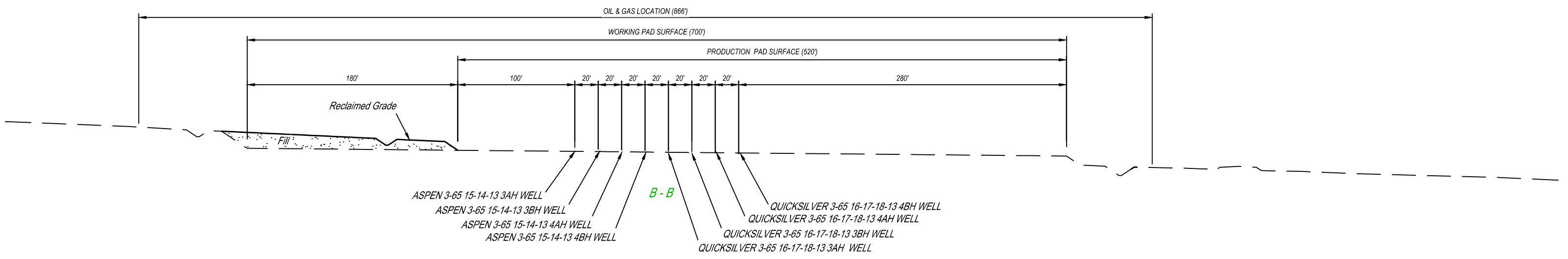
SURVEYED BY	ORION RICE, N.W.	11-23-21	SCALE
DRAWN BY	M.D.	02-08-22	1" = 80'

REV: 03 04-16-24 D.J.G. (ADDED PIPELINE EASEMENT)

**PRELIMINARY FLOWBACK EQUIPMENT LAYOUT**



X-Section Scale  
1" = 80'



APPROXIMATE EARTHWORK QUANTITIES	
(11") TOPSOIL STRIPPING	0 Cu. Yds.
PAD RECLAMATION	30,430 Cu. Yds.
<b>TOTAL CUT</b>	<b>30,430 Cu. Yds.</b>
<b>PAD RECLAIM - FILL</b>	<b>30,430 Cu. Yds.</b>
DEFICIT MATERIAL	0 Cu. Yds.
TOPSOIL ON RECLAIMED PAD	4,050 Cu. Yds.

**NOTES:**  
 • Fill quantity includes 10% for compaction.  
 • Calculations based on 11" of topsoil stripping.  
 • Cut/Fill slopes 4:1 (Typ.).

REV: 01 11-16-23 K.C. (UPDATE SURFACE)

**CRESTONE PEAK RESOURCES OPERATING LLC**  
 ASPEN 3-65 15-14 SOUTH PAD  
 W 1/2 SW 1/4, SECTION 15, T3S, R65W, 6th P.M.  
 ADAMS COUNTY, COLORADO

**UELS, LLC**  
 Corporate Office \* 85 South 200 East  
 Vernal, UT 84078 \* (435) 789-1017

SURVEYED BY: ORION RICE, N.W. 11-23-21 SCALE:  
 DRAWN BY: K.C. 11-16-22 AS SHOWN  
**INTERIM RECLAMATION - CROSS SECTIONS**