



**RADIAL BOND TOOL  
GAMMA RAY  
CCL**

Company CHEVRON  
Well STATE PC AB16-09  
Field WATTENBERG  
County WELD  
State CO  
Country USA

Company CHEVRON  
Well STATE PC AB16-09  
Field WATTENBERG  
County WELD  
State CO  
Country USA

Location: API #: 05-123-31496  
LAT. 40.57136528 LONG. -104.547482475  
SEC 17 TWP 7N RGE 64W  
Permanent Datum GL Elevation 4882'  
Log Measured From KB 13'  
Drilling Measured From KB  
Other Services NONE  
Elevation  
K.B. ---  
D.F. ---  
G.L. 4882'

Date	5-APR-2024
Run Number	ONE
Depth Driller	9219'
Depth Logger	1400'
Bottom Logged Interval	1405'
Top Log Interval	SURFACE
Open Hole Size	8.625"
Type Fluid	WATER
Density / Viscosity	NA
Max. Recorded Temp.	---
Estimated Cement Top	N/A
Time Well Ready	ON ARRIVAL
Time Logger on Bottom	NA
Equipment Number	7770
Location	GREELEY, CO
Recorded By	W.Wacker
Witnessed By	Cody Jones

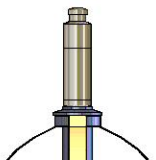
Borehole Record				Tubing Record			
Run Number	Bit	From	To	Size	Weight	From	To
Casing Record							
Surface String		9 5/8					Bottom
Prot. String							805'
Production String		7"					9203'
Liner							

<<< Fold Here >>>

All interpretations are opinions based on inferences from electrical or other measurements and we cannot and do not guarantee the accuracy or correctness of any interpretation, and we shall not, except in the case of gross or willful negligence on our part, be liable or responsible for any loss, costs, damages, or expenses incurred or sustained by anyone resulting from any interpretation made by any of our officers, agents or employees. These interpretations are also subject to our general terms and conditions set out in our current Price Schedule.

**Comments**

**RAN CBL TO VERIFY CEMENT BOND  
WELL LOADED UPON ARRIVAL  
CORRELATED TO KELLY BUSHING AT 13 FT.**

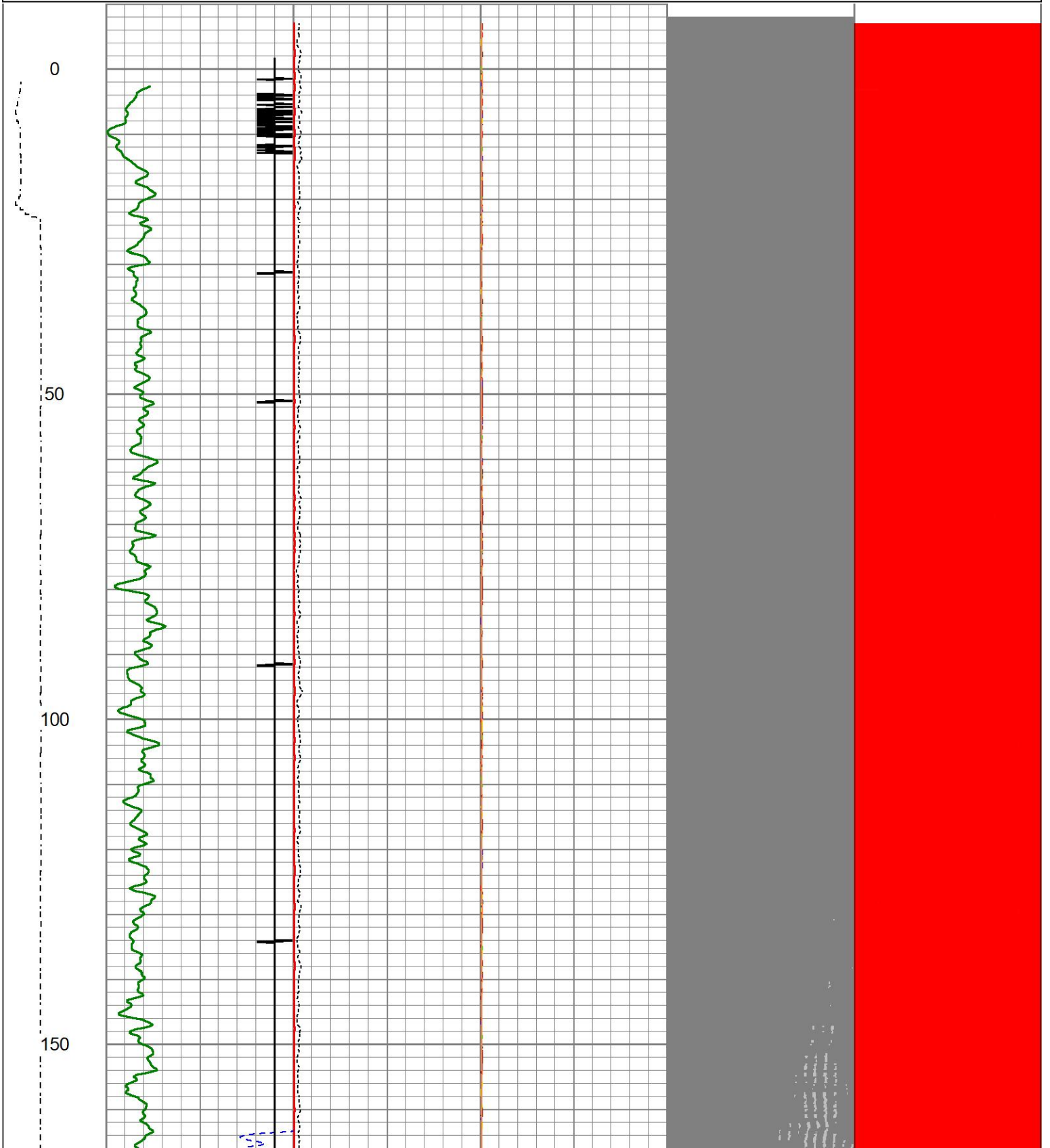
Sensor	Offset (ft)	Schematic	Description	Length (ft)	O.D. (in)	Weight (lb)
			CHD-1_7/16_Cabehead 1 7/16 Cablehead	1.00	1.44	5.00

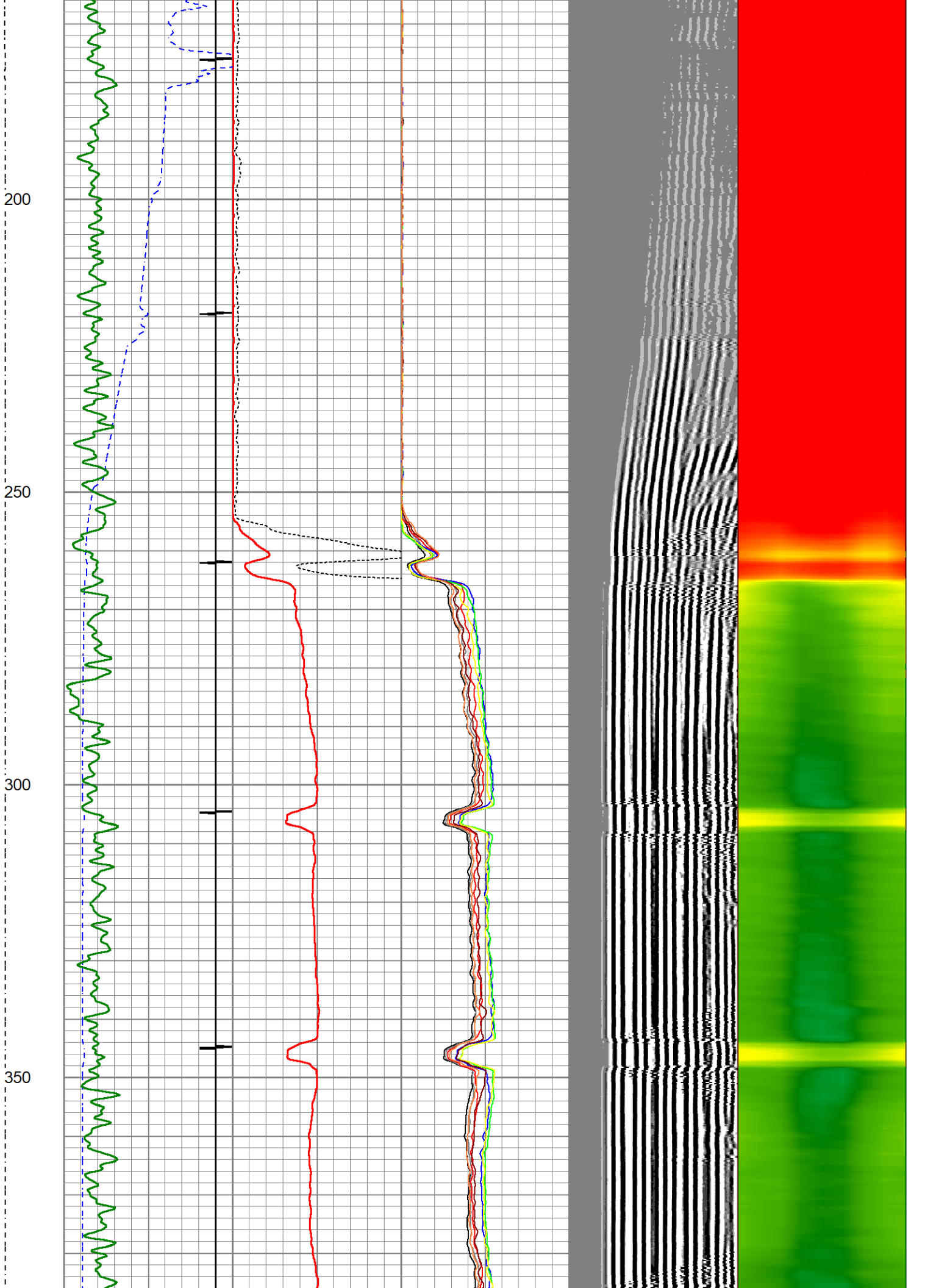
			CENT-2.75variable 2.75" variable length	2.00	2.75	25.00
HEADVOLT	15.88					
Temp	13.02					
WVFS8	10.79		RBT-27SBT10 (Greeley-Ext-Temp-7") Probe 2.75" Radial with Integral Temperature Sub	9.39	2.75	
WVFS7	10.79					
WVFS6	10.79					
WVFS5	10.79					
WVFS4	10.79					
WVFS3	10.79					
WVFS2	10.79					
WVFS1	10.79					
WVF3FT	10.79					
WVF5FT	9.79					
WVFCAL	6.54					
HEADVOLT	6.54					
			CENT-2.75variable 2.75" variable length	2.00	2.75	25.00
CCL	3.63					
			GR-27GRL10 (27GRL10-XXXX) 2-3/4" Probe Gamma Ray	4.54	2.75	50.00
GR	0.89					

Dataset: chev\_7\_inch.db: field/well/cbl/m  
 Total length: 18.93 ft  
 Total weight: 105.00 lb  
 O.D.: 2.75 in

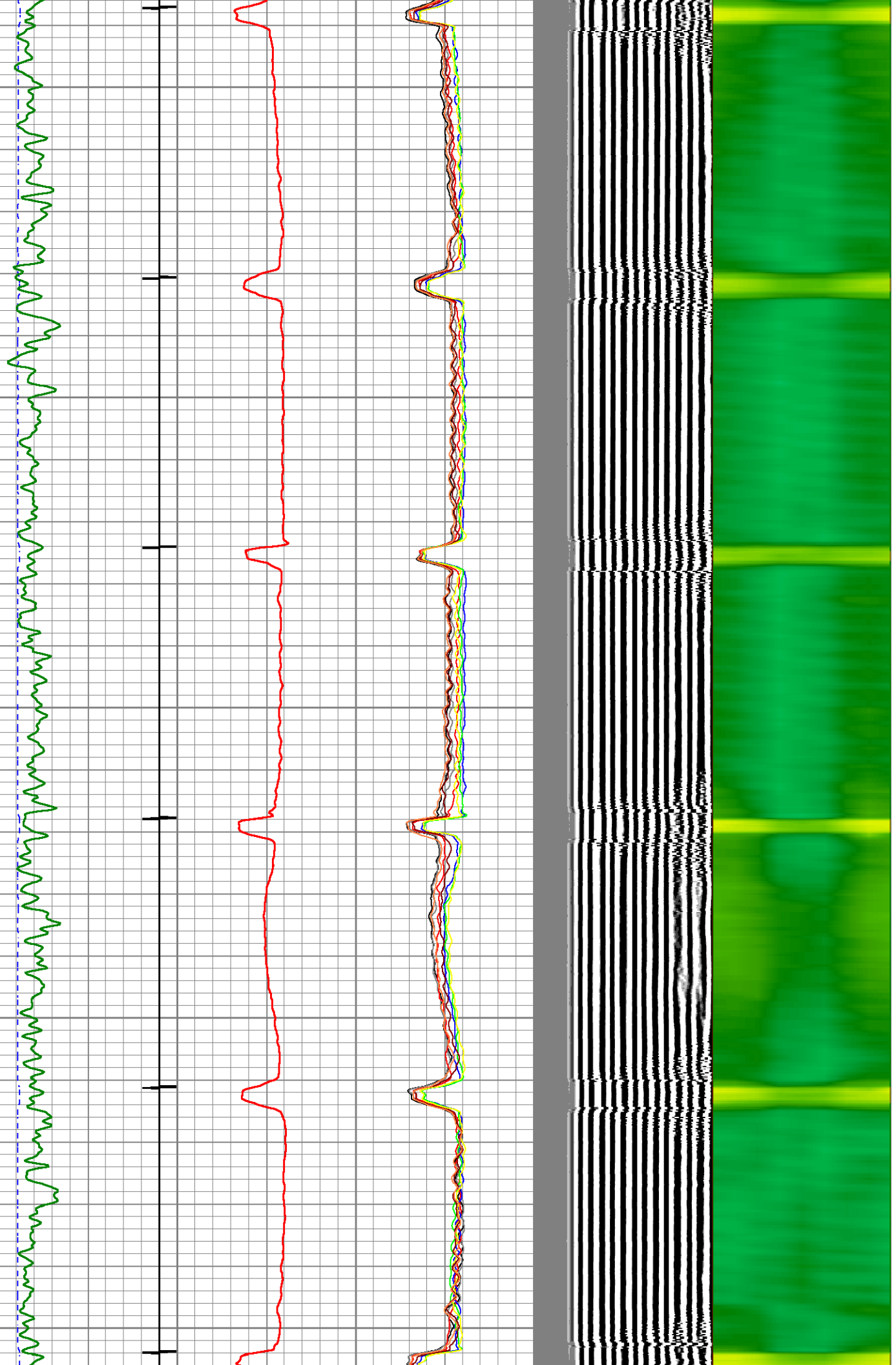
Database File chev\_7\_inch.db  
 Dataset Pathname cbl/main  
 Presentation Format ips\_rbtcolorcivitas2  
 Dataset Creation Fri Apr 05 12:26:03 2024  
 Charted by Depth in Feet scaled 1:240

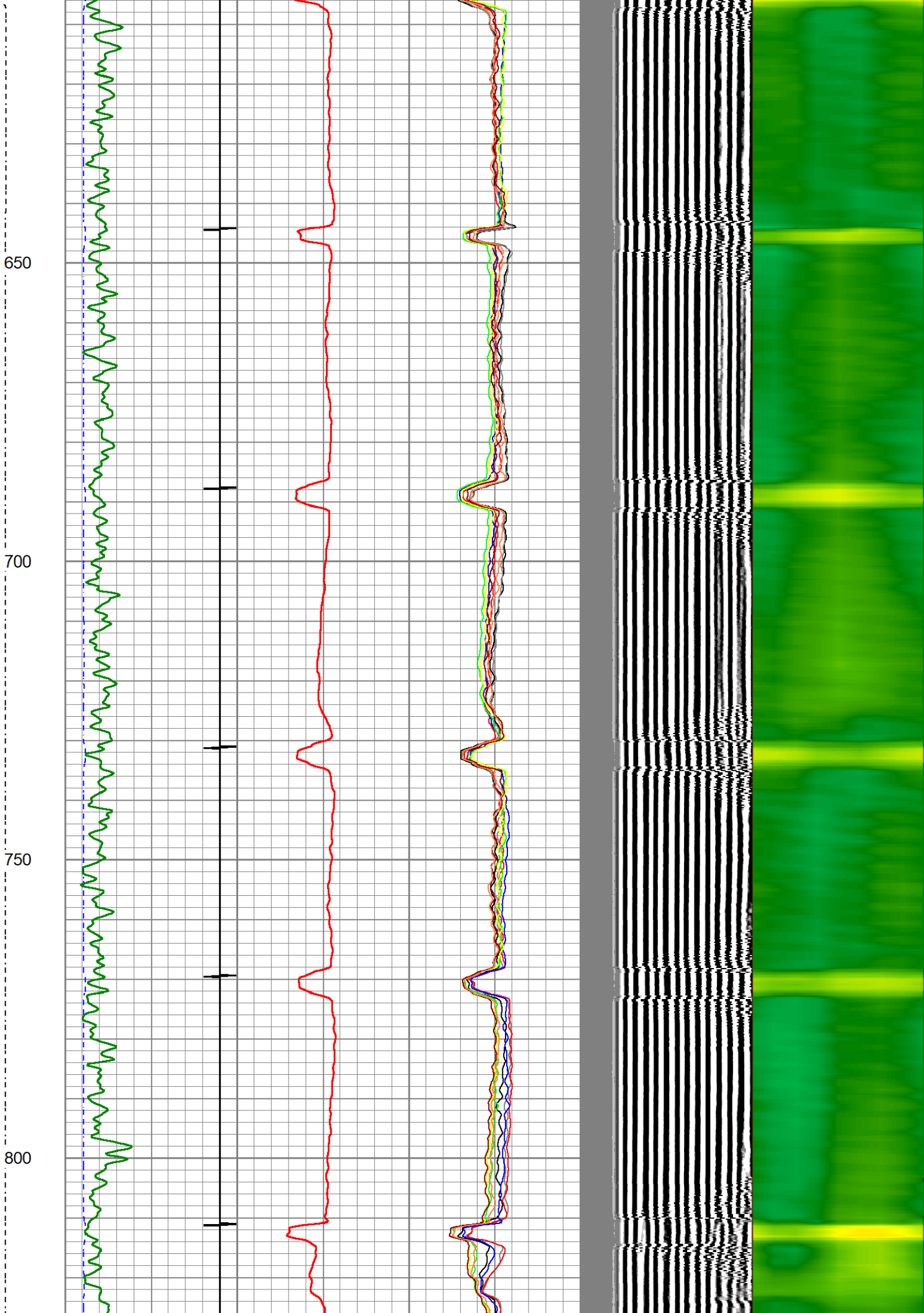
LSPD	200	TT (usec)	1000	0	AMP (mV)	100	0	AMPS1	100	200	VDL (usec)	1200	1	Cement Map	8
(ft/min)	-9	CCL	1	0	AMP3FT (mV)	20	0	AMPS2	100						
0	-250	GR (GAPI)	150					AMPS3	100						
		GR (GAPI)	400					AMPS4	100						
								AMPS5	100						
								AMPS6	100						
								AMPS7	100						
								AMPS8	100						

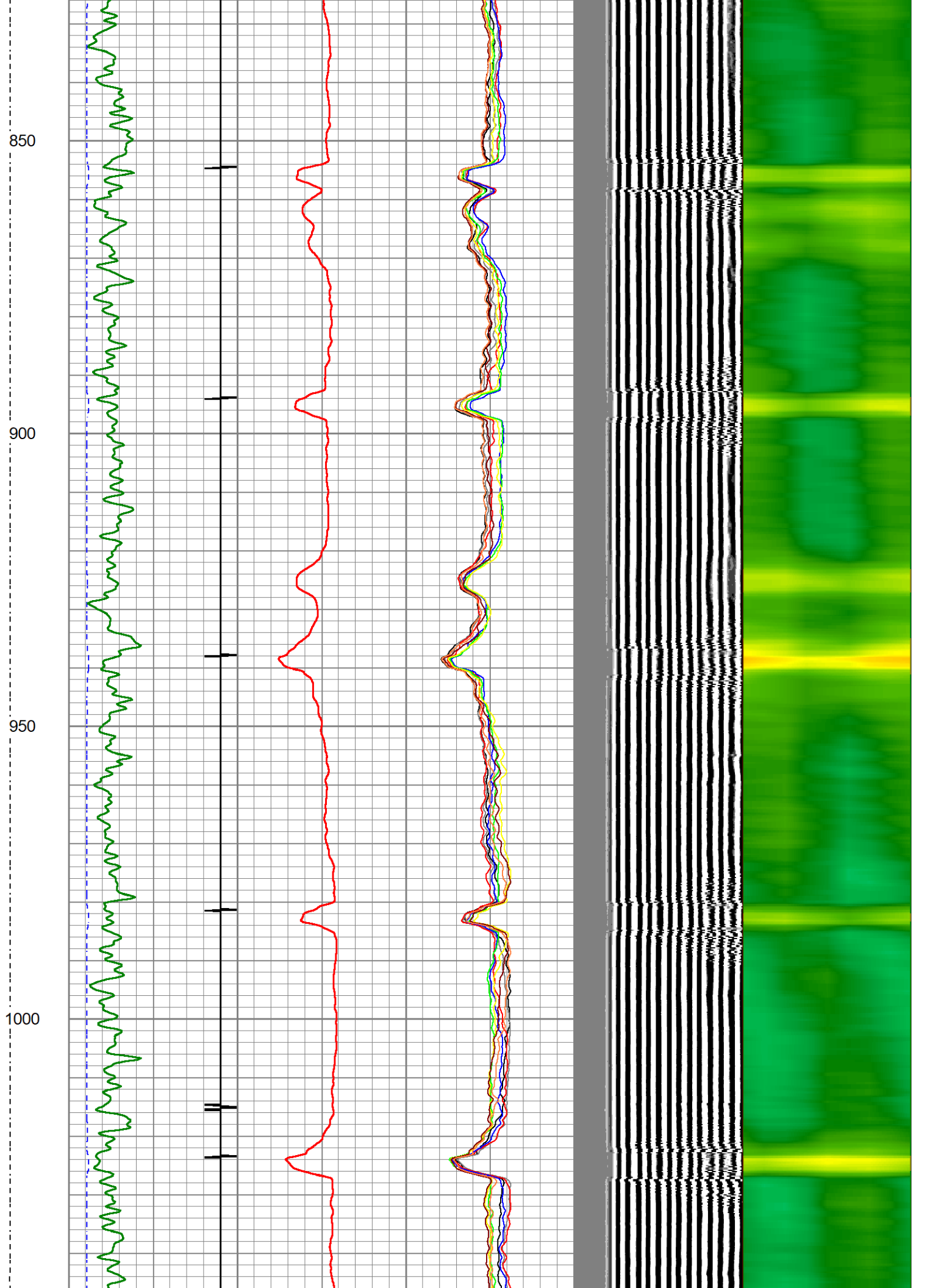


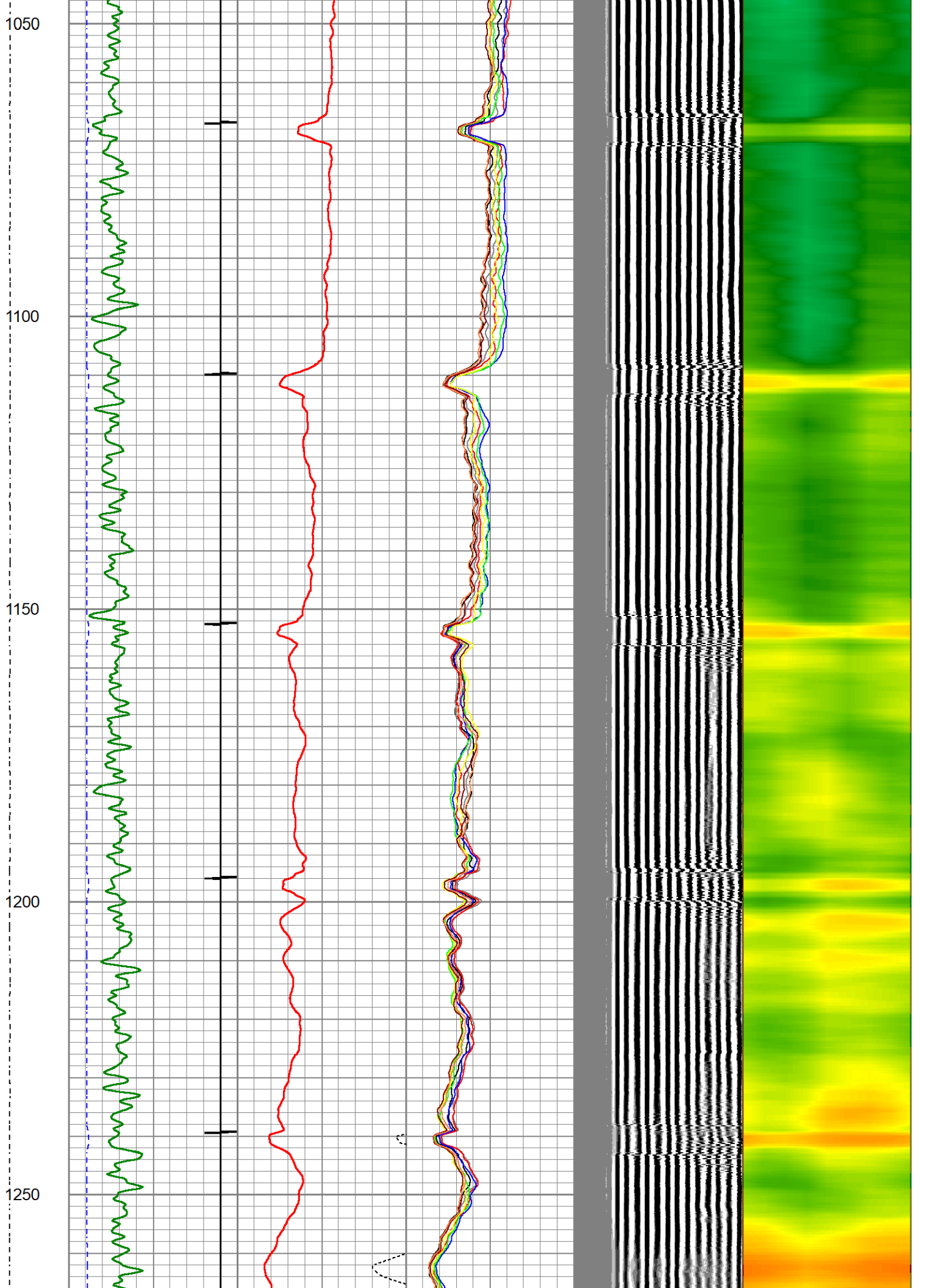


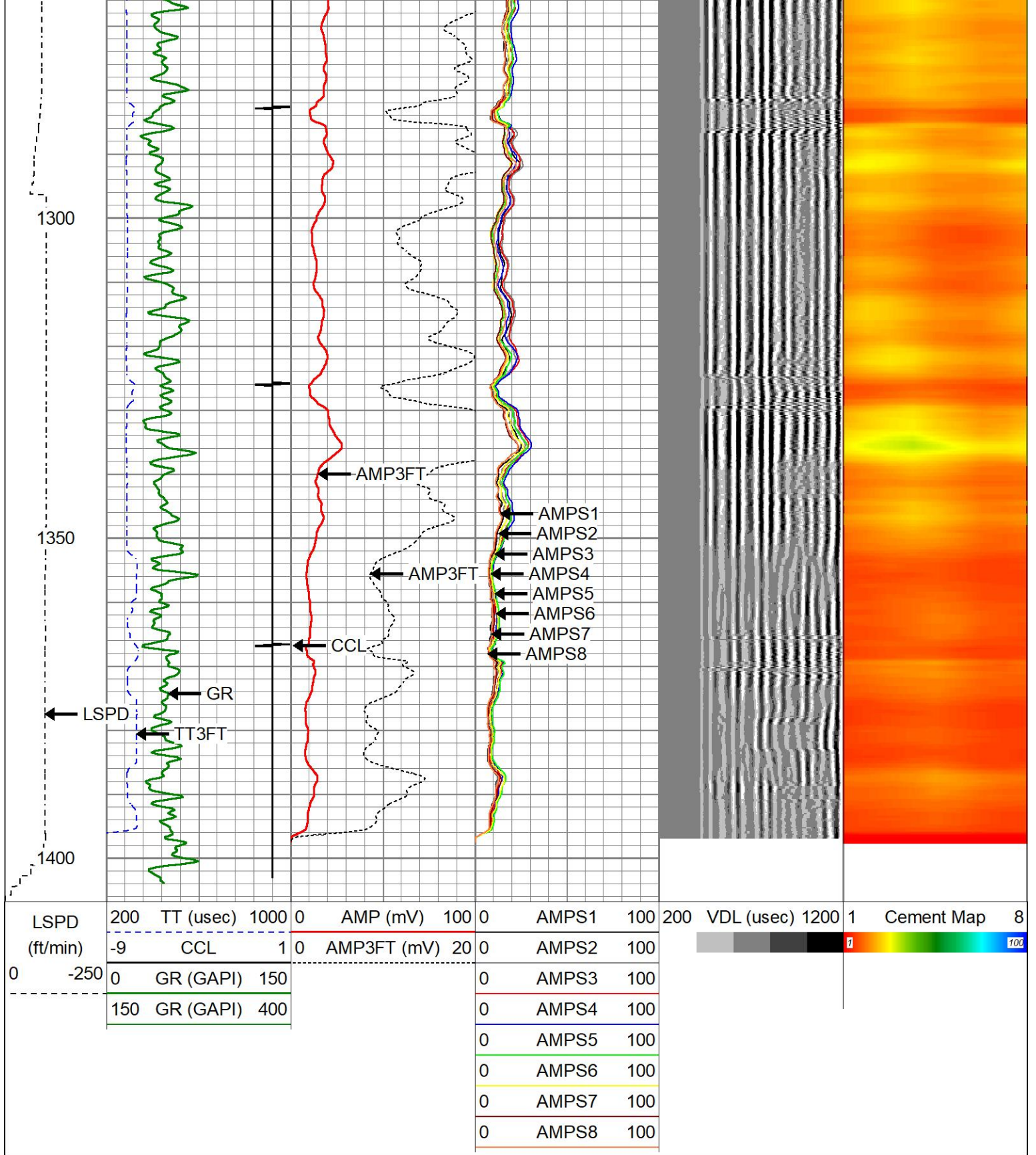
400  
450  
500  
550  
600











### Calibration Report

Database File chev\_7\_inch.db  
 Dataset Pathname cbl/main  
 Dataset Creation Fri Apr 05 12:26:03 2024

### Gamma Ray Calibration Report

Serial Number: 27GRL10-XXXX  
 Tool Model: 27GRL10  
 Performed: Mon Mar 11 13:46:24 2024

Calibrator Value:	1.0	GAPI
Background Reading:	0.0	cps
Calibrator Reading:	1.0	cps
Sensitivity:	0.5000	GAPI/cps

**Segmented Cement Bond Log Calibration Report**

Serial Number:	Greeley-Ext-Temp-7"	
Tool Model:	27SBT10	
Calibration Casing Diameter:	7.000	in
Calibration Depth:	459.992	ft

Master Calibration, performed (Derived):

	Raw (v)		Calibrated (mv)		Results	
	Zero	Cal	Zero	Cal	Gain	Offset
3'	0.000	0.774	0.000	62.165	80.320	-0.001
CAL	0.000	1.021				
5'	0.000	0.756	0.000	62.165	82.256	-0.000
SUM						
S1	-0.000	0.764	0.000	62.165	81.305	0.041
S2	0.000	0.740	0.000	62.165	84.019	-0.001
S3	0.000	0.778	0.000	62.165	79.897	-0.001
S4	0.000	0.795	0.000	62.165	78.189	-0.001
S5	0.000	0.831	0.000	62.165	74.798	-0.001
S6	0.000	0.804	0.000	62.165	77.317	-0.001
S7	0.000	0.799	0.000	62.165	77.847	-0.001
S8	0.000	0.777	0.000	62.165	80.011	-0.001

Internal Reference Calibration, performed (Not Performed):

	Raw (v)		Calibrated (v)		Results	
	Zero	Cal	Zero	Cal	Gain	Offset
CAL	0.000	0.000	0.000	1.021	1.000	0.000

Air Zero Calibration, performed Fri Apr 5 11:52:55 2024:

	Raw (v)		Calibrated (v)		Results	
	Zero		Zero		Offset	
3'	0.000		0.000			0.000
5'	0.000		0.000			0.000
SUM						
S1	0.000		0.000			0.000
S2	0.000		0.000			0.000
S3	0.000		0.000			0.000
S4	0.000		0.000			0.000
S5	0.000		0.000			0.000
S6	0.000		0.000			0.000
S7	0.000		0.000			0.000
S8	0.000		0.000			0.000



Company CHEVRON  
Well STATE PC AB16-09



Field WATTENBERG  
County WELD  
State CO

Country USA