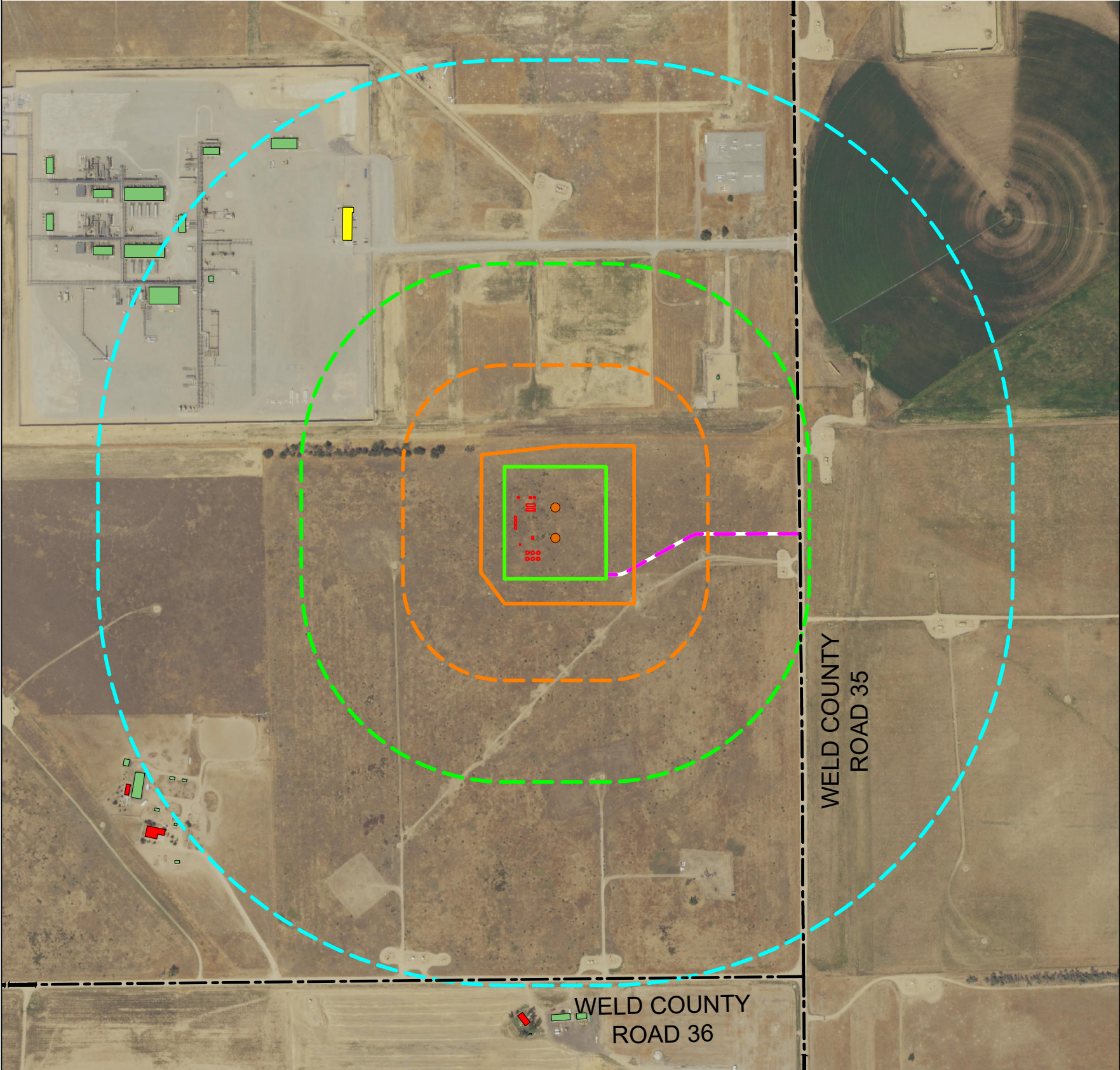


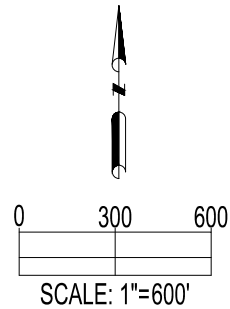
GLADE  
CULTURAL FEATURES MAP



CULTURAL TABLE: (NUMBER OF FEATURES FOUND WITHIN EACH RADIUS AS MEASURED FROM THE WORKING PAD SURFACE)						
	BUILDING UNITS	RESIDENTIAL BUILDING UNITS	HIGH OCCUPANCY BUILDING UNITS	SCHOOL PROPERTIES	SCHOOL FACILITIES	DESIGNATED OUTSIDE ACTIVITY AREAS
0-500 FEET	0	0	0	0	0	0
501-1,000 FEET	0	0	0	0	0	0
1,001-2,000 FEET	1	0	0	0	0	0
2,001-5,280 FEET	24	20	0	0	0	0

CULTURAL DISTANCES:

	From Well	From Equipment	From Working Pad Surface
BUILDING	±1015' NE	±1064' NE	±695' NE
BUILDING UNIT	±1651' NW	±1502' NW	±1343' NW
RESIDENTIAL BUILDING UNIT	±2395' SW	±2215' SW	±2075' SW
HIGH OCCUPANCY BUILDING UNIT	+5280' NW	+5280' NW	+5280' NW
DESIGNATED OUTSIDE ACTIVITY AREA	+5280' SW	+5280' SW	+5280' SW
PUBLIC ROAD	±1189' E	±1268' E	±936' E
ABOVE GROUND UTILITY	±1583' NE	±1588' NE	±1292' NE
RAILROAD	+5280' NW	+5280' NW	+5280' NW
PROPERTY LINE	±336' N	±281' N	±132' N
SCHOOL FACILITY	+5280' NW	+5280' NW	+5280' NW
SCHOOL PROPERTY LINE	+5280' NW	+5280' NW	+5280' NW
CHILD CARE CENTER	+5280' NE	+5280' NE	+5280' NE
DIC BOUNDARY	±2916' N	±2871' N	±2714' N
RESIDENTIAL BUILDING UNIT, HIGH OCCUPANCY BUILDING UNIT, OR SCHOOL FACILITY WITHIN A DISPROPORTIONATELY IMPACED COMMUNITY WITHIN 2,000 FEET OF THE PROPOSED WORKING PAD SURFACE	±4166' NW	±4002' NW	±3849' NW




DATA SOURCE:  
AERIAL IMAGERY: NAIP 2021  
WATER WELLS: COLORADO DWR  
NHD: USGS  
  
PUBLICLY AVAILABLE DATA SOURCES HAVE NOT BEEN INDEPENDENTLY VERIFIED BY ASCENT.

REFERENCE LOCATION  
  
\*\*GLADE NORTH\*\*  
  
LAT: 40.253073° N  
LONG: 104.739141° W  
ELEVATION: 4897'  
2324' FSL & 1193' FEL  
PDOP: 1.6  
GPS OPERATOR: JOSH MCCRAKEN

DISCLAIMER:  
THIS PLOT DOES NOT REPRESENT A MONUMENTED LAND SURVEY AND SHOULD NOT BE RELIED UPON TO DETERMINE BOUNDARY LINES, PROPERTY OWNERSHIP OR OTHER PROPERTY INTERESTS. PARCEL LINES, IF DEPICTED HAVE NOT BEEN FIELD VERIFIED AND MAY BE BASED UPON PUBLICLY AVAILABLE DATA THAT ALSO HAS NOT BEEN INDEPENDENTLY VERIFIED.

CURRENT SURFACE USE: DRY LAND CROP  
FUTURE SURFACE USE: DRY LAND CROP



8620 Wolff Court  
Westminster, CO 80031  
(303) 928-7128  
www.ascentgeomatics.com

FIELD DATE:  
12-03-23

DRAWING DATE:  
02-02-24

DRAWN BY:  
HJL

CHECKED BY:  
CSG

SITE NAME:  
GLADE

SURFACE LOCATION:  
NE 1/4 SE 1/4 SEC. 2, T3N, R66W, 6TH P.M.  
WELD COUNTY, COLORADO

LEGEND:

= PROPOSED WELL

= RESIDENTIAL BUILDING UNIT

= BUILDING

= BUILDING UNIT

= PUBLIC ROAD

= PROPOSED ACCESS ROAD

= WORKING PAD SURFACE

= DEEP GEOTHERMAL LOCATION


= PROPOSED FACILITY

= 500' RADIUS FROM WPS

= 1000' RADIUS FROM WPS

= 2000' RADIUS FROM WPS

PREPARED FOR:



PLAT: \\AGSFS\PROJECTS\OXY\_B230002\PROD\2A\GLADE\_2A\_CULTURALFEATURESMAP\_LAYOUT.TAB: Cultural Features