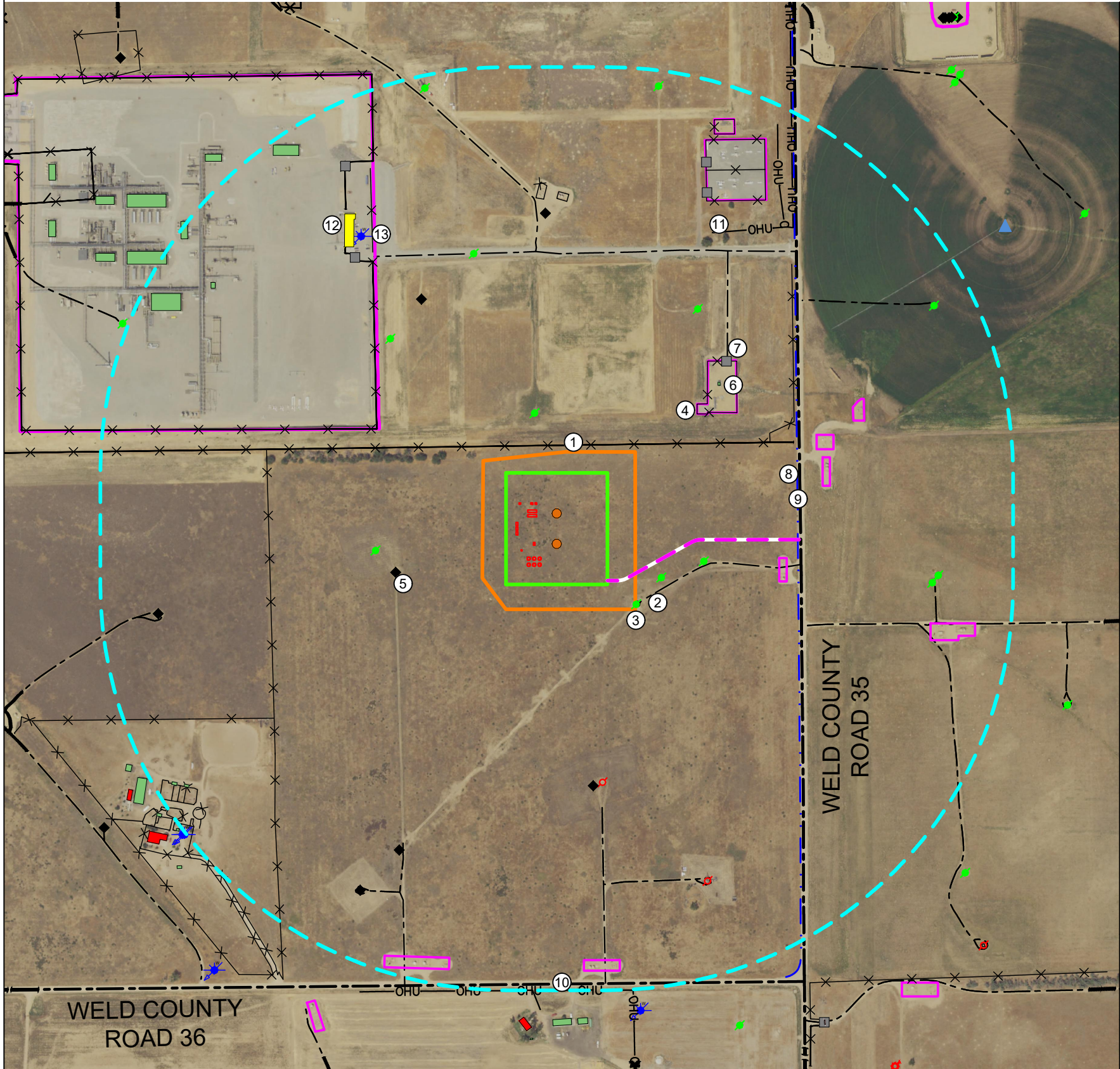
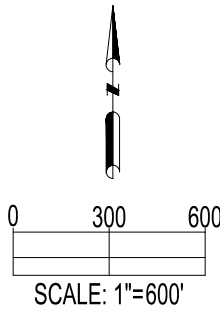


GLADE
LOCATION DRAWING



IMPROVEMENTS:
(AS MEASURED FROM THE PROPOSED WORKING PAD SURFACE)

1. FENCE:	±133' N, ±529' NE, ±673' NW, ±816' NE, ±1161' W, ±1319' SW, ±1338' N, ±1349' N, ±1427' NE, ±1751' NE, ±1826' SW, ±1858' SW, ±1925' SW, ±1946' SW
2. PRIVATE ROAD:	±161' SE, ±816' NE, ±996' SE, ±996' SE, ±1080' N, ±1100' S, ±1100' S, ±1283' NE, ±1283' NE, ±1373' SW, ±1373' SW, ±1479' S, ±1541' E, ±1541' E, ±1604' SW, ±1614' E, ±1614' E, ±1703' W
3. ABANDONED OIL & GAS WELL:	±172' SE, ±266' E, ±295' N, ±475' E, ±643' W, ±873' NW, ±923' NE, ±975' S, ±1092' N, ±1542' SE, ±1602' E, ±1631' E, ±1809' NE, ±1923' N, ±1938' NW
4. EXISTING FACILITY:	±530' NE, ±662' NW, ±847' E, ±1038' E, ±1061' E, ±1240' NE, ±1430' NE, ±1605' E, ±1753' NE, ±1851' S, ±1860' S
5. EXISTING OIL & GAS WELL:	±544' W, ±952' NW, ±992' S, ±1280' N, ±1411' SW, ±1670' SW, ±1721' W
6. BUILDING:	±695' NE, ±1698' NW, ±1792' NW, ±1849' SW, ±1868' NW, ±1893' SW, ±1948' NW, ±1964' NW
7. GATE:	±805' NE, ±1297' NW, ±1467' NE, ±1608' NE, ±1707' NW
8. DITCH:	±935' E, ±1480' NE
9. WELD COUNTY ROAD 35:	±936' E
10. WELD COUNTY ROAD 36:	±1955' S
11. OVERHEAD UTILITY:	±1292' NE, ±1494' NE
12. BUILDING UNIT:	±1343' NW
13. WATER WELL:	±1367' NW



DATA SOURCE:
AERIAL IMAGERY: NAIP 2021
WATER WELLS: COLORADO DWR
NHD: USGS

PUBLICLY AVAILABLE DATA SOURCES HAVE NOT
BEEN INDEPENDENTLY VERIFIED BY ASCENT.

OIL & GAS SURFACE ACREAGE:

13.0 ACRES OIL & GAS LOCATION
6.3 ACRES WORKING PAD SURFACE
11.5 ACRES INTERIM RECLAIM

DISCLAIMER:
THIS PLOT DOES NOT REPRESENT A MONUMENTED LAND SURVEY AND SHOULD NOT BE RELIED UPON TO DETERMINE BOUNDARY LINES,
PROPERTY OWNERSHIP OR OTHER PROPERTY INTERESTS. PARCEL LINES, IF DEPICTED HAVE NOT BEEN FIELD VERIFIED AND MAY BE BASED
UPON PUBLICLY AVAILABLE DATA THAT ALSO HAS NOT BEEN INDEPENDENTLY VERIFIED.

REFERENCE LOCATION

GLADE NORTH

LAT: 40.253073° N
LONG: 104.739141° W
ELEVATION: 4897'
2324' FSL & 1193' FEL
PDOP: 1.6
GPS OPERATOR: JOSH MCCRAKEN

CURRENT SURFACE USE: DRY LAND CROP
FUTURE SURFACE USE: DRY LAND CROP



FIELD
DATE:
12-03-23

DRAWN BY:
HJL

DRAWING
DATE:
02-02-24

CHECKED BY:
CSG

SITE NAME:
GLADE

SURFACE LOCATION:
NE 1/4 SE 1/4 SEC. 2, T3N, R66W, 6TH P.M.
WELD COUNTY, COLORADO

LEGEND:

- = PROPOSED WELL
- = PLUGGED & ABANDONED WELL
- ★ = WATER WELL
- ◆ = EXISTING WELL
- ⊗ = TEMPORARILY ABANDONED WELL

- X—X— = FENCE
- OHU— = OVERHEAD UTILITY
- - - - - = DITCH
- . - . - = PROPOSED ACCESS ROAD
- - - - - = PRIVATE ROAD
- - - - - = PUBLIC ROAD

- = GATE
- = BUILDING
- = BUILDING UNIT
- = RESIDENTIAL BUILDING UNIT
- = EXISTING FACILITY

- = 2000' BUFFER FROM WPS
- = DEEP GEOTHERMAL LOCATION
- = WORKING PAD SURFACE
- = PROPOSED FACILITY

PREPARED FOR:

