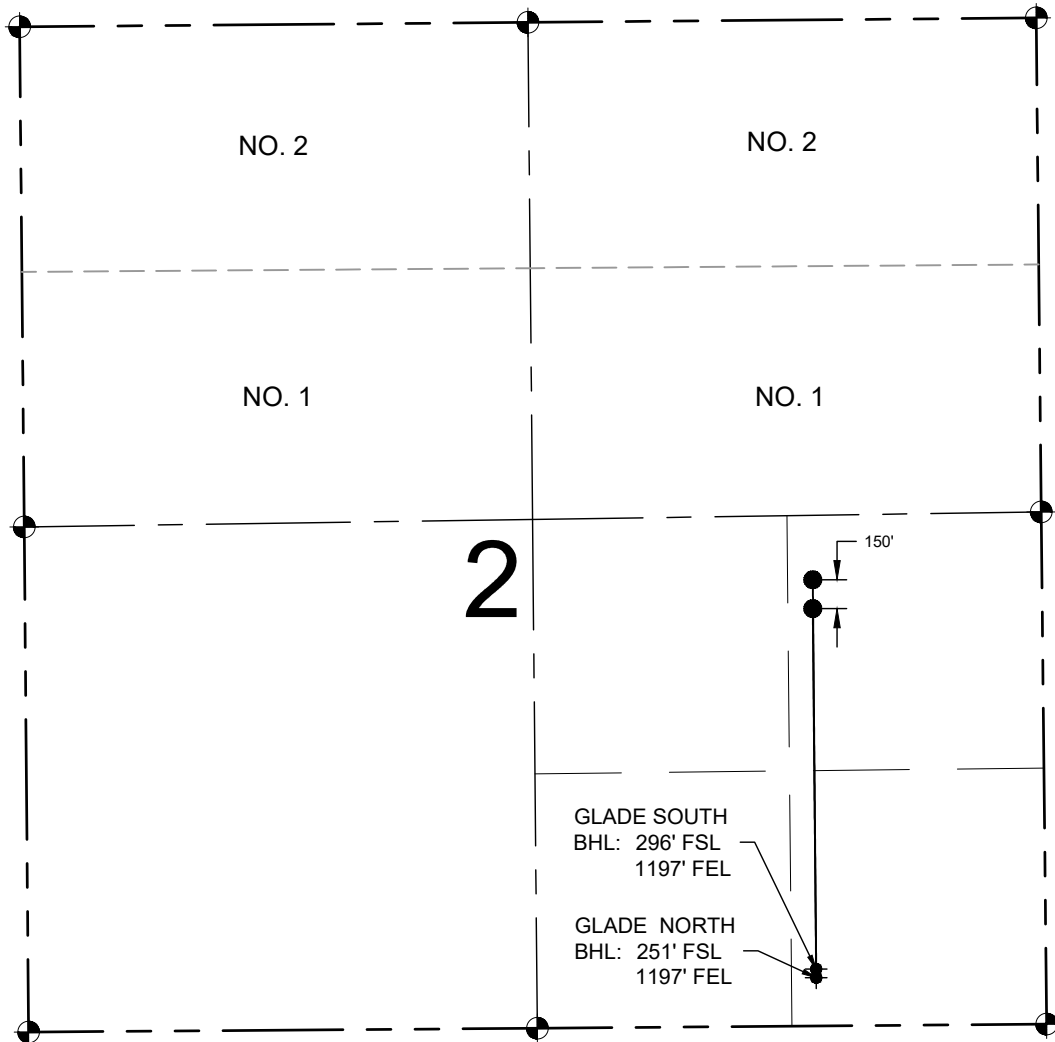
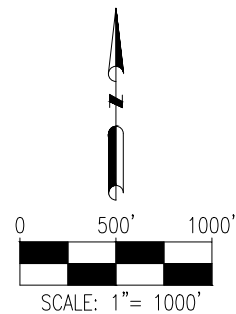


GLADE GEOTHERMAL PAD DIRECTIONAL WELL PLAT



LEGEND

- = EXISTING MONUMENT
- = PROPOSED WELL
- ⊕ = BOTTOM HOLE
- BHL = BOTTOM HOLE



NOTES:

1. THIS FIELD SURVEY CONFORMS TO THE MINIMUM STANDARDS SET BY THE ECMC, RULE NO. 216.
2. ALL BEARINGS ARE GRID BEARINGS OF THE COLORADO STATE PLANE COORDINATE SYSTEM, NORTH ZONE, NORTH AMERICAN DATUM 1983/2011. THE LINEAL DIMENSIONS AS SHOWN HEREIN ARE GRID DISTANCES BASED UPON THE "U.S. SURVEY FOOT." TO DERIVE GROUND DISTANCES MULTIPLY SHOWN DISTANCE BY 1.00027482.
3. FIELD VERIFICATION OF MONUMENTS COMPLETED WITHIN 1 YEAR OF SIGNATURE DATE, UNLESS OTHERWISE NOTED.

NOTES:

- GLADE NORTH TO BE AT 2324' FSL & 1193' FEL.
- BOTTOM HOLE AT 251' FSL & 1197' FEL.
- GLADE SOUTH TO BE AT 2173' FSL & 1195' FEL.
- BOTTOM HOLE AT 296' FSL & 1197' FEL.



FIELD DATE:
01-16-24
DRAWING DATE:
03-14-24
BY:
NJH

CHECKED:
KJM

SITE NAME:
GLADE GEOTHERMAL PAD
SURFACE LOCATION:
**NE 1/4 SE 1/4 SEC. 2, T3N, R66W, 6TH P.M.
WELD COUNTY, COLORADO**

PREPARED FOR:

