



OXY USA Inc.

Dust Mitigation Plan

**GLADE Project
NE/4 SE/4 Section 2, T3N R66W, 6th P.M.**

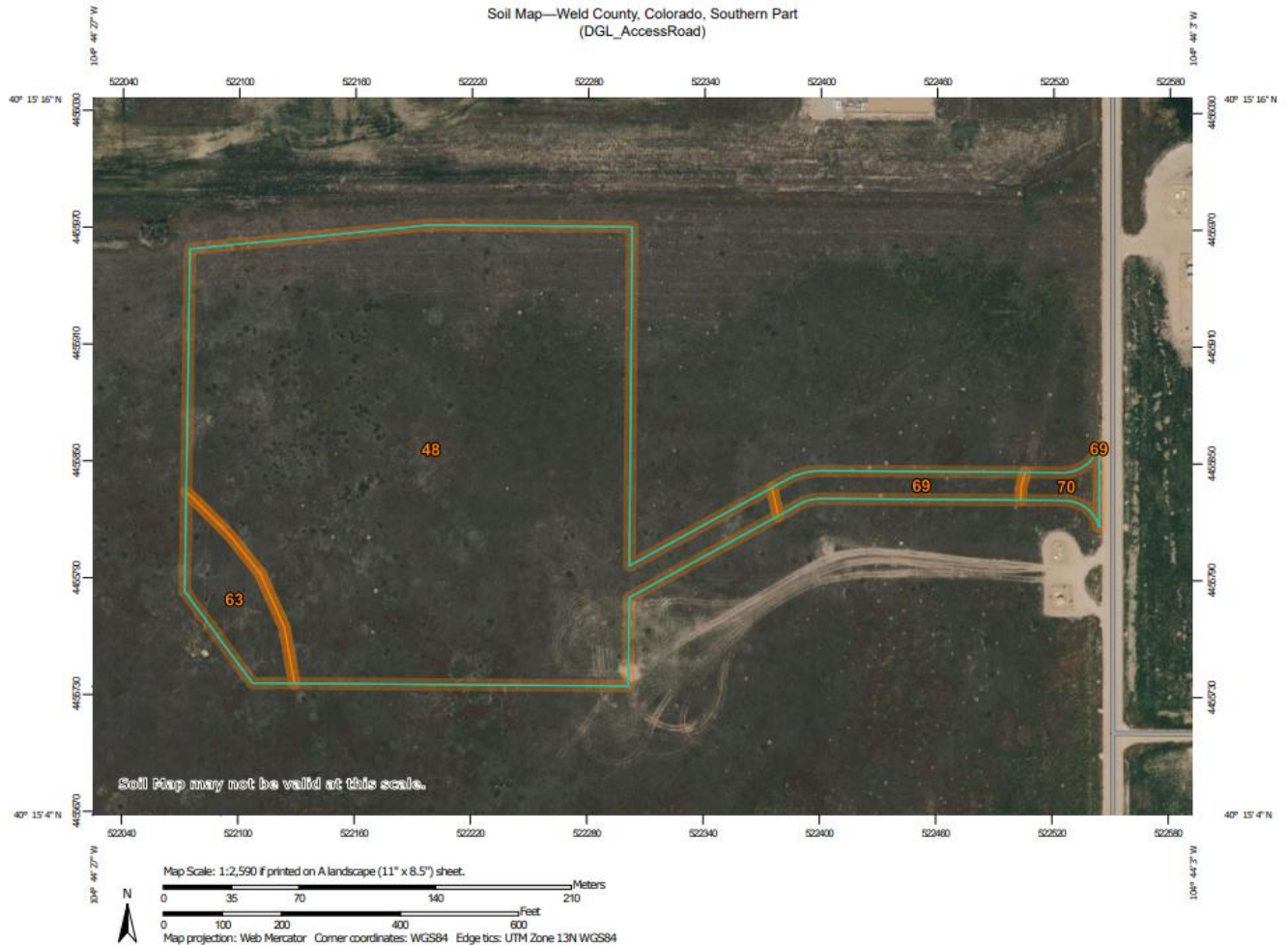
Weld County, Colorado

April 2024

OXY USA Inc.
Dust Mitigation Plan – GLADE

Introduction:

OXY USA INC (OXY) has developed this Dust Mitigation Plan in compliance with the Colorado Energy and Carbon Management Commission (ECMC) Rule 427.



Map Unit Symbol	Map Unit Name	Acres in AOI	Percent of AOI
48	Olney fine sandy loam, 3 to 5 percent slopes	12.6	90.4%
63	Terry fine sandy loam, 3 to 9 percent slopes	0.7	5.1%
69	Valent sand, 0 to 3 percent slopes	0.5	3.3%
70	Valent sand, 3 to 9 percent slopes	0.2	1.2%
Totals for Area of Interest		13.9	100.0%

427.a(2) Proposed Vehicle Speed Limits to Minimize Dust

- 10 mph on lease road from WCR 35 West into location and 5 mph once vehicles reach well pad/facility

427.a(3) Total Area of Disturbance (In Acres)

- Well pad and Facility – Working Pad Surface (WPS) – 13 acres
- Access road – 1.15 acres

427.a(4) Whether Access Roads are Paved

- Access roads are not paved, they are constructed with a minimum of four - inches of gravel road base

427.a(5) Number of Anticipated Truck Trips During Each Phase

- Construction Phase – 1,558 truck trips
- Drilling Phase – 6,657 truck trips
- Evaluation Phase – 2,192 truck trips

427.a(6) A plan for Suppressing Fugitive Dust Caused Solely by Wind

- On active locations, in the event dust is caused solely by the wind OXY will have fresh water deployed to suppress dust for the duration of the wind event
- In addition, disturbed soils will be placed to minimize ability for soil particles to become airborne. Various techniques to be used depending on soil type specific to each location:
 - Track pack/compact topsoil piles, consolidate soil used to construct perimeter ditch/berm and sediment traps
 - Hydro mulch and/or hydroseed topsoil piles and/or other stormwater BMP features
 - Seed/straw crimp disturbed soils where feasible
 - Place and compact gravel layer on working pad surfaces and access roads

427.a(7) Best Management Practices

- OXY will proactively deploy fresh water to suppress dust along access road to well pad/ facility during all phases of pre-production operations
- Speed limits will be reduced to 10 mph on access road and 5 mph once vehicles reach well pad/facility
- Access roads and Vehicle Tracking Control will receive maintenance as needed throughout operations
- In the event of high winds that generate dust that cannot be mitigated with an application of water, OXY will shut down construction operations