



Service Order #: 658176

Date: 4/8/2024

Well Name:	Location:	County:	St:	API#
BARCLAY 44-14		WELD	CO	

Formation:	Cement Via:	Type Of Service:	Well Type/Age:	AFE#:	PO#:
	TUBING	SUSSEX AGM			

Customer: OXY USA INC

Remarks: H2O TEMP 70\*, PH ~7, CHLORIDES 0 PPM  
100SKS, 20.8BBLS, DISPLACE 15.9BBLS  
PERFS@ 4405'  
CICR@ 4375'  
ETOC@ 4311'

Customer Rep: JOSE

PH:

WELLBORE DATA				
Type	Size	Weight	Depth	Volume
Surface Casing:				
Production Casing:	4.5	0	0.0	0
Intermediate:	0	0	0.0	0
Drill Pipe:	0	0	0.0	0
Tubing:	2.375	0		

Type	Size	Depth (Top)	Depth (Bot)	Volume
Liner:				0
Open Hole:	0.0			

OTHER DATA		
BHT	Max PSI	Total Depth

Packer or Retainer Type/Depth:

--	--

Perf Depths:	#	TotalPerf
	0	
	0	
	0	

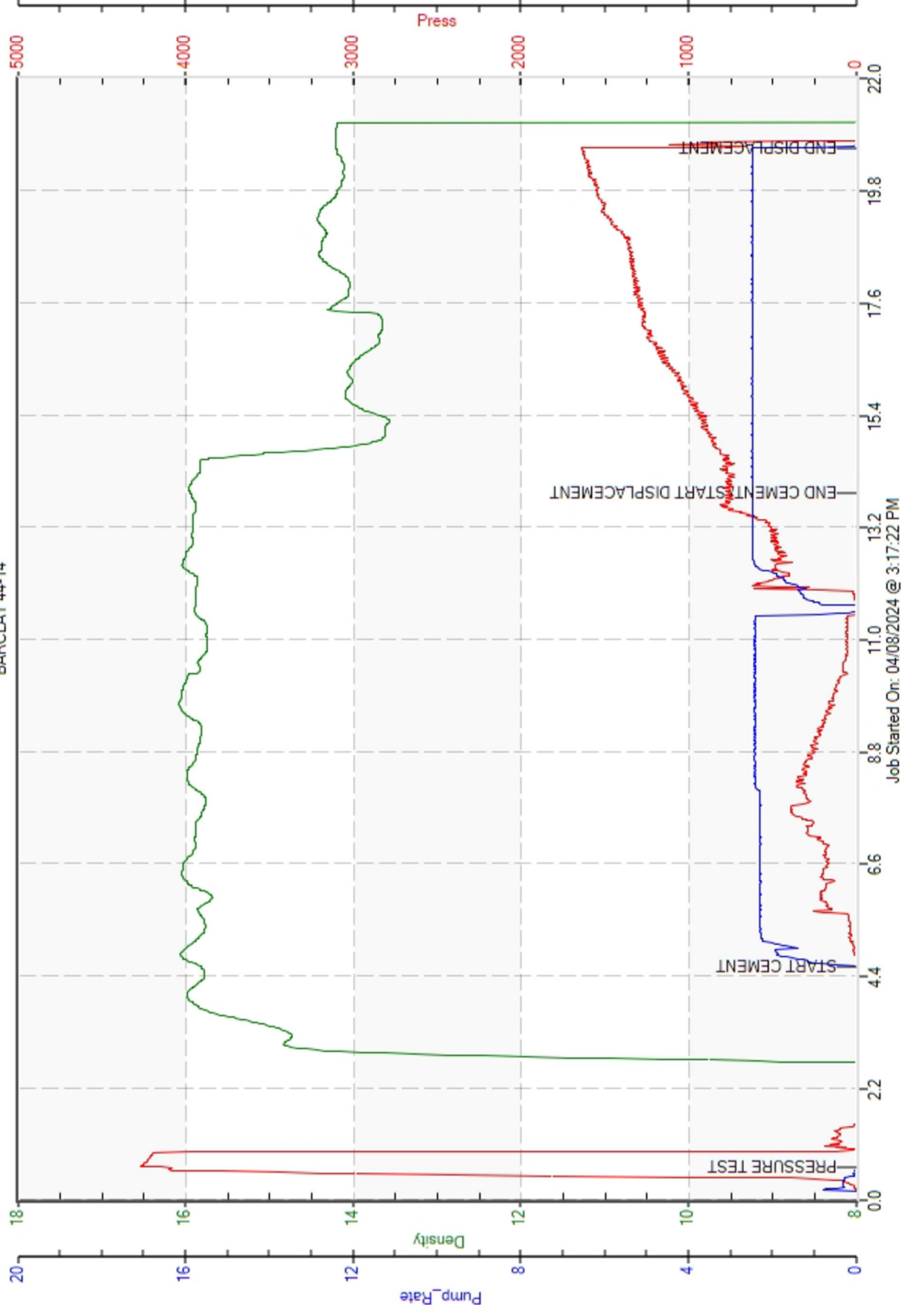
TIME	PUMP RATES		DENSITY	PRESS	STG TOT	TOTAL	REMARKS
	WATER (gpm)	PUMP (bpm)	(lb/gal)	(psi)	(bbbls)	(bbbls)	
15:18	0	0.0	6.88	4273	0.1	0.1	PRESSURE TEST
15:21	0	0.0	15.82	0	0.1	0.1	START CEMENT
15:31	0	2.5	15.95	765	20.8	20.8	END CEMENT/ START DISPLACEMENT
15:38	0	2.5	14.22	1640	15.9	37.6	END DISPLACEMENT

## Summary

Max Fl. Rate	Avg Fl. Rate	Max Psi	Avg Psi
2.5	2.3	4,273	647

Customer Acknowledgement:	Service Rating:	Cementer:	PRODUCTS USED
	<input type="checkbox"/> Satisfactory <input type="checkbox"/> Unsatisfactory	JEREMIE	SUSSEX AGM, CLASS G CMT, 2% GYPSUM(EXPANSION), .4% C16A(LATEX), .25% C17(FUID LOSS), .3% C35(DISPERSANT), 1.17 YIELD, 5.05 GAL/SKS, 15.8 LBS/GAL

OXY USA INC  
BARCLAY 44-14





Service Order #: 658175

Date: 4/8/2024

Well Name:	Location:	County:	St:	API#
BARCLAY 44-14		WELD	CO	

Formation:	Cement Via:	Type Of Service:	Well Type/Age:	AFE#:	PO#:
	TUBING	NIOBRARA AGM			

Customer: OXY USA INC

Remarks: H2O TEMP 69\*, PH ~7, CHLORIDES 0 PPM  
100SKS, 27.1BBLS, DISPLACE 26.9BBLS  
PERFS@ 7258'  
CICR@ 7228'  
ETOC@ 7164'

Customer Rep: JOSE

PH:

WELLBORE DATA				
Type	Size	Weight	Depth	Volume
Surface Casing:				
Production Casing:	4.5	0	0.0	0
Intermediate:	0	0	0.0	0
Drill Pipe:	0	0	0.0	0
Tubing:	2.375	0		

Type	Size	Depth (Top)	Depth (Bot)	Volume
Liner:				0
Open Hole:	0.0			

OTHER DATA		
BHT	Max PSI	Total Depth

Packer or Retainer Type/Depth:

--	--

Perf Depths:	#	TotalPerf
	0	
	0	
	0	

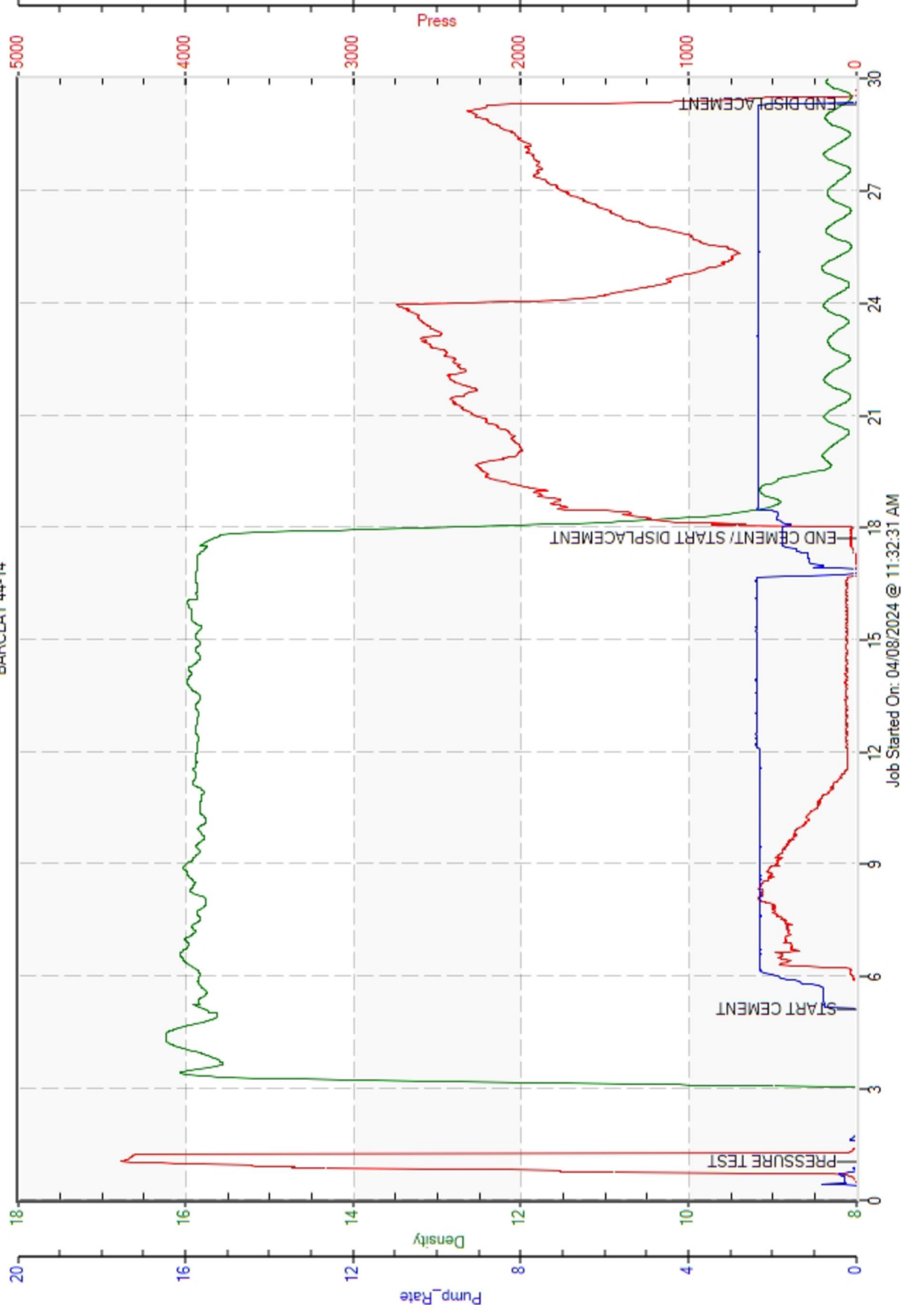
TIME	PUMP RATES		DENSITY	PRESS	STG TOT	TOTAL	REMARKS
	WATER (gpm)	PUMP (bpm)	(lb/gl)	(psi)	(bbls)	(bbls)	
11:33	0	0.0	6.88	4385	0.1	0.1	PRESSURE TEST
11:37	0	0.0	15.80	0	0.1	0.1	START CEMENT
11:50	0	1.8	15.65	33	27.1	27.1	END CEMENT/ START DISPLACEMENT
12:01	0	2.1	8.14	2060	26.9	54.1	END DISPLACEMENT

## Summary

Max Fl. Rate	Avg Fl. Rate	Max Psi	Avg Psi
2.1	2.2	4,385	975

Customer Acknowledgement:	Service Rating:	Cementer:	PRODUCTS USED
	<input type="checkbox"/> Satisfactory <input type="checkbox"/> Unsatisfactory	JEREMIE	NIO AGM, G CMT, 35% SILICA, .4% C16A(LATEX), .4% C17(FLUID LOSS), .3% C35(DISPERSANT), .2% C23(RETARDER), 1.52 YIELD, 6.22 GAL/SKS, 15.8 LBS/GAL

OXY USA INC  
BARCLAY 44-14





Service Order #: 658177

Date: 4/9/2024

Well Name:	Location:	County:	St:	API#
BARCLAY 44-14		WELD	CO	

Formation:	Cement Via:	Type Of Service:	Well Type/Age:	AFE#:	PO#:
	TUBING	LOWER AGM			

Customer: OXY USA INC

Remarks: H2O TEMP 70\*, PH ~7, CHLORIDES 0 PPM  
160SKS, 34.2BBLS, DISPLACE 27.9BBLS  
PERFS@ 2300'  
ETOC@ 1800'

Customer Rep: JOSE

PH:

WELLBORE DATA				
Type	Size	Weight	Depth	Volume
Surface Casing:				
Production Casing:	4.5	0	0.0	0
Intermediate:	0	0	0.0	0
Drill Pipe:	0	0	0.0	0
Tubing:		0		

Type	Size	Depth (Top)	Depth (Bot)	Volume
Liner:				0
Open Hole:	0.0			

OTHER DATA		
BHT	Max PSI	Total Depth

Packer or Retainer Type/Depth:

--	--

Perf Depths:	#	TotalPerf
	0	
	0	
	0	

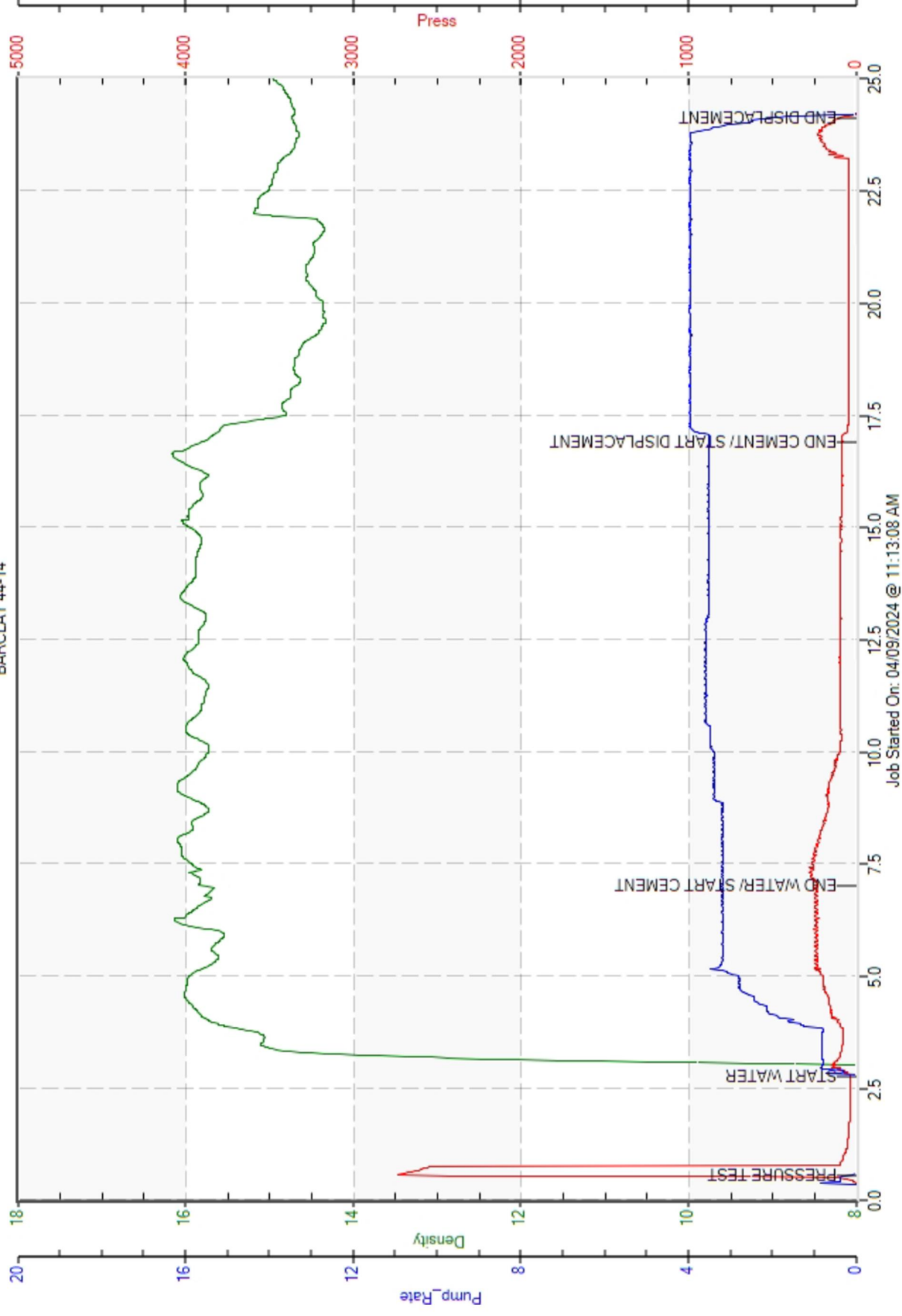
TIME	PUMP RATES		DENSITY	PRESS	STG TOT	TOTAL	REMARKS
	WATER (gpm)	PUMP (bpm)	(lb/gl)	(psi)	(bbls)	(bbls)	
11:13	0	0.1	6.88	2739	0.1	0.1	PRESSURE TEST
11:15	0	0.0	6.38	41	0.1	0.1	START WATER
11:20	0	3.2	15.85	250	10.0	10.0	END WATER/ START CEMENT
11:30	0	3.5	15.79	83	34.2	44.3	END CEMENT/ START DISPLACEMENT
11:37	0	1.8	14.73	93	27.9	72.6	END DISPLACEMENT

## Summary

Max Fl. Rate	Avg Fl. Rate	Max Psi	Avg Psi
3.5	3.4	2,739	117

Customer Acknowledgement:	Service Rating:	Cementer:	PRODUCTS USED
	<input type="checkbox"/> Satisfactory <input type="checkbox"/> Unsatisfactory	JEREMIE	LOWER AGM, G CMT, 4% GYPSUM(EXPANSION), 1% CaCl, .4% C16A(LATEX), 1.20 YIELD, 5.149 GAL/SKS, 15.8 LBS/GAL

OXY USA INC  
BARCLAY 44-14





Service Order #: 658125

Date: 4/10/2024

Well Name:	Location:	County:	St:	API#
BARCLAY 44-14		WELD	CO	

Formation:	Cement Via:	Type Of Service:	Well Type/Age:	AFE#:	PO#:
	TUBING	PLUG			

Customer: OCCIDENTAL

Remarks: H2O TEMP 69\*, PH 7, CHLORIDES <100  
370 SKS, 79.7 BBLs, DISPLACE 1.7 BBLs  
ETOC 1500' - 450'

Customer Rep: JOSE C.

PH:

## WELLBORE DATA

Type	Size	Weight	Depth	Volume
Surface Casing:	8.625	24	585.0	
Production Casing:	0	0	0.0	0
Intermediate:	0	0	0.0	0
Drill Pipe:	0	0	0.0	0
Tubing:	2.374	4.7	1,500.0	

Type	Size	Depth (Top)	Depth (Bot)	Volume
Liner:				0
Open Hole:	7.9	585.0	1,500.0	

## OTHER DATA

BHT	Max PSI	Total Depth

Packer or Retainer Type/Depth:

--	--

Perf Depths: # TotalPerf

		0	
		0	
		0	

TIME	PUMP RATES		DENSITY	PRESS	STG TOT	TOTAL	REMARKS
	WATER (gpm)	PUMP (bpm)	(lb/gal)	(psi)	(bbls)	(bbls)	
8:26	0	0.0	-0.01	3317	0.2	0.2	PSI TEST
8:27	0	0.1	-0.01	0	0.2	0.2	H2O SPACER
8:33	0	2.2	15.84	284	10.2	10.2	END SPACER / START CMT
8:55	215	3.7	15.50	783	79.7	90.1	END CMT / START DISPLACEMENT
8:56	0	2.2	6.99	27	1.7	93.4	OFF LINE

## Summary

Max Fl. Rate	Avg Fl. Rate	Max Psi	Avg Psi
3.8	3.1	3,356	549

Customer Acknowledgement:

Service Rating:

Cementer:

☐ Satisfactory☐ Unsatisfactory

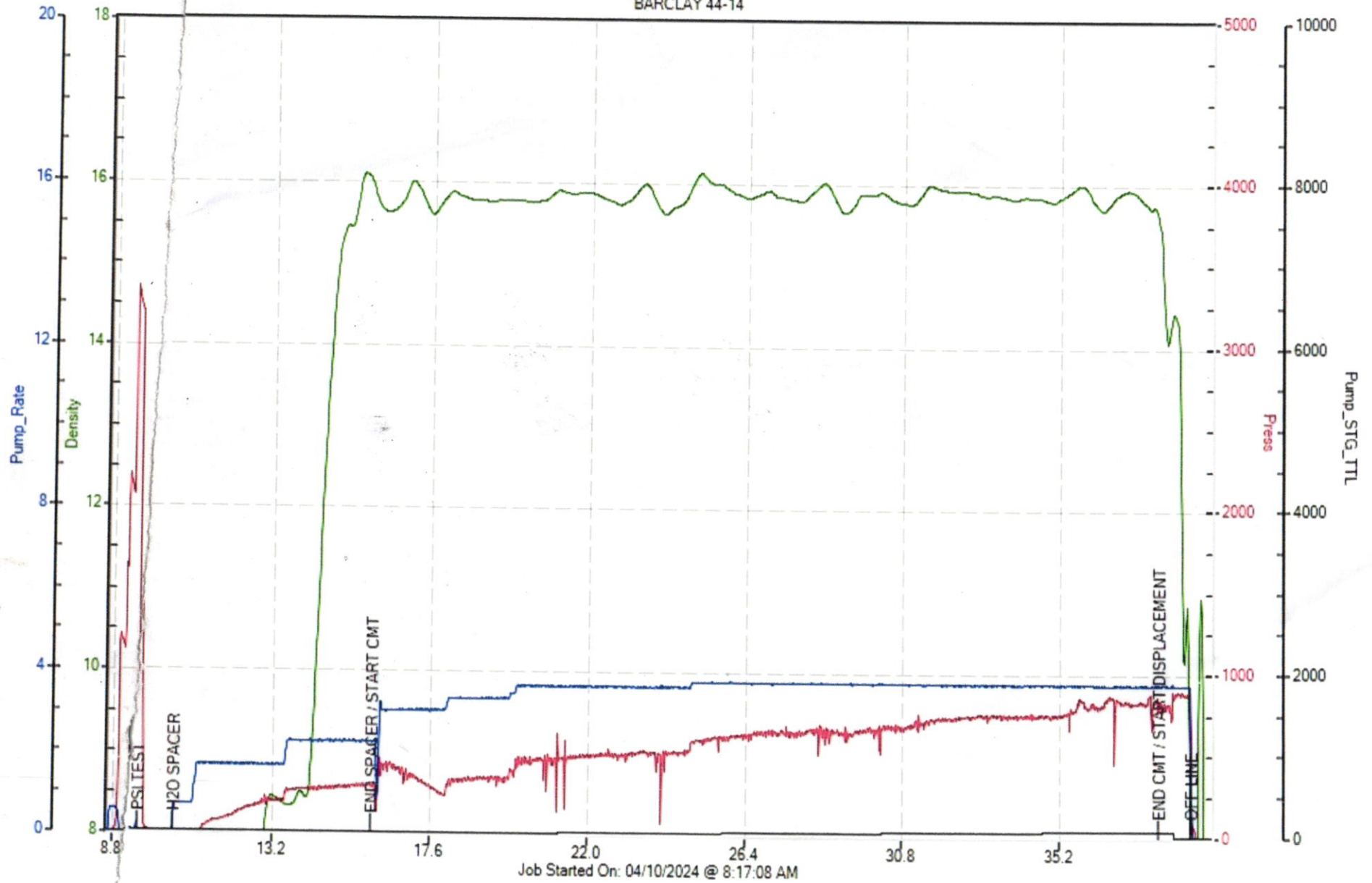
BOHLEN

## PRODUCTS USED

UPPER AGM, G CMT, 4% GYPSUM(EXPANSION), 1.5% CaCl, .4% C16A(LATEX), 1.21 YIELD, 5.153 GAL/SK, 15.8 LBS/GAL



OCCIDENTAL  
BARCLAY 44-14







Service Order #: 658407

Date: 4/10/2024

Well Name:	Location:	County:	St:	API#	
BARCLAY 44-14		WELD	CO		
Formation:	Cement Via:	Type Of Service:	Well Type/Age:	AFE#:	PO#:
	TUBING	PLUG			

Customer: OCCIDENTAL

Remarks: H2O TEMP 69\*, PH 7, CHLORIDES <100  
104 SKS, 22.5 BBLS, DISPLACE 1.5 BBLS  
ETOC 772' - 450'

Customer Rep: JOSE C.

PH:

## WELLBORE DATA

Type	Size	Weight	Depth	Volume
Surface Casing:	8.625	24	585.0	
Production Casing:	0	0	0.0	0
Intermediate:	0	0	0.0	0
Drill Pipe:	0	0	0.0	0
Tubing:	2.374	4.7	772.0	

## OTHER DATA

BHT	Max PSI	Total Depth

Packer or Retainer Type/Depth:

--	--

Type	Size	Depth (Top)	Depth (Bot)	Volume
Liner:				0
Open Hole:	7.9	585.0	7,720.0	

Perf Depths: # TotalPerf

		0	
		0	
		0	

TIME	PUMP RATES		DENSITY	PRESS	STG TOT	TOTAL	REMARKS
	WATER (gpm)	PUMP (bpm)	(lb/gal)	(psi)	(bbbls)	(bbbls)	
14:05	0	0.0	-0.01	1466	0.1	0.1	PSI TEST
14:06	0	0.6	-0.01	0	0.0	0.0	H2O SPACER
14:10	0	2.0	15.45	192	5.0	5.0	END SPACER / START CMT
14:21	0	2.0	0.54	58	22.5	27.6	END CMT / START DISPLACEMENT
14:21	0	1.7	-0.01	6	1.5	29.1	OFF LINE

## Summary

Max Fl. Rate	Avg Fl. Rate	Max Psi	Avg Psi
2.1	1.8	1,555	91

Customer Acknowledgement:

Service Rating:

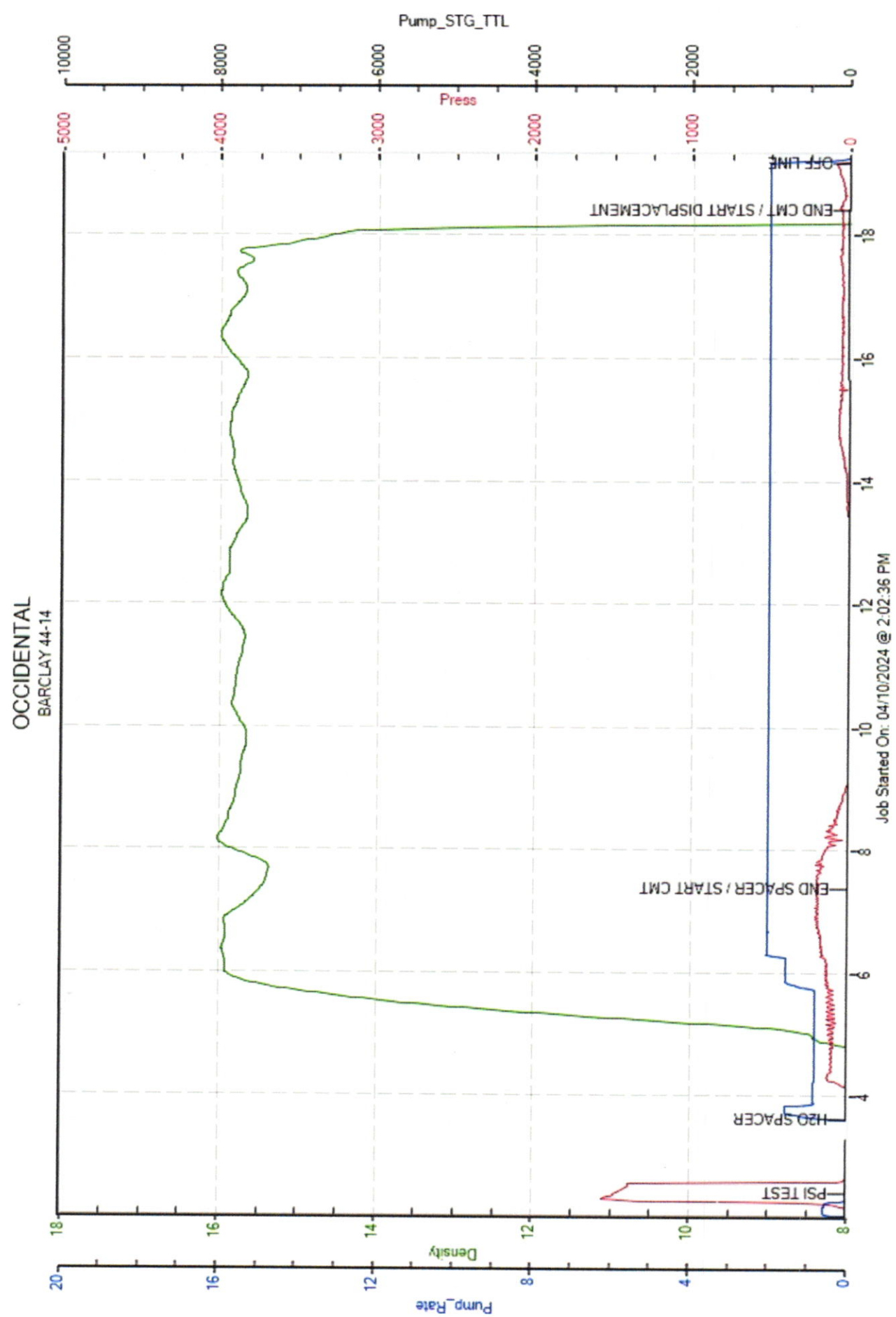
- ☐ Satisfactory  
☐ Unsatisfactory

Cementer:

BOHLEN

## PRODUCTS USED

UPPER AGM, G CMT, 4% GYPSUM(EXPANSION), 1.5% CaCl, .4% C16A(LATEX), 1.21 YIELD, 5.153 GAL/SK, 15.8 LBS/GAL





Service Order #: 659077

Date: 4/11/2024

Well Name:	Location:	County:	St:	API#
BARCLAY 44-14		WELD	CO	

Formation:	Cement Via:	Type Of Service:	Well Type/Age:	AFE#:	PO#:
	TUBING	PLUG			

Customer: OCCIDENTAL

Remarks: H2O TEMP 67\*, PH 7, CHLORIDES <100  
95 SKS, 20.5 BBLS  
ETOC 300' - SURFACE

Customer Rep: JOSE C.

PH:

## WELLBORE DATA

Type	Size	Weight	Depth	Volume
Surface Casing:	8.625	24	300.0	
Production Casing:	0	0	0.0	0
Intermediate:	0	0	0.0	0
Drill Pipe:	0	0	0.0	0
Tubing:	2.375	4.7	300.0	

Type	Size	Depth (Top)	Depth (Bot)	Volume
Liner:				0
Open Hole:	0.0			

## OTHER DATA

BHT	Max PSI	Total Depth

Packer or Retainer Type/Depth:

Perf Depths:	#	TotalPerf
	0	
	0	
	0	

TIME	PUMP RATES		DENSITY	PRESS	STG TOT	TOTAL	REMARKS
	WATER (gpm)	PUMP (bpm)	(lb/gal)	(psi)	(bbls)	(bbls)	
11:01	0	0.5	0.00	1603	0.1	0.1	PSI TEST
11:05	43	0.0	15.81	12	0.0	0.0	START CMT
11:15	0	2.0	12.50	157	20.5	20.5	CMT TO SURFACE / OFF LINE

## Summary

Max Fl. Rate	Avg Fl. Rate	Max Psi	Avg Psi
2.1	2.0	1,603	57

Customer Acknowledgement:

Service Rating:

Cementer:

☐ Satisfactory☐ Unsatisfactory

BOHLEN

## PRODUCTS USED

SURFACE AGM, G CMT, 4% GYPSUM(EXPANSION), 2% CaCl, .4% C-16A(LATEX), 1.21 YIELD, 5.168 GAL/SKS, 15.8 LBS/GAL

OCCIDENTAL  
BARCLAY 44-14

