

**ANTELOPE FARMS 1-24**

API # 001-08004

Loc. # 320098

FIELD NAME PORTER - #69798

Spud Date 11/17/1981

Basin DENVER - JULESBURG

Location NWSW 24 2S 63W 6

Elevation GL (ft) 5254

Elevation KB (ft) 5264

TD (ft) 7558

PBSD (ft) 7558

**Formation Tops**

DENVER - 72'

UPPER ARAPAHOE - 263'

LOWER ARAPAHOE - 468'

FOX HILLS TOP - 981'

FOX HILLS BASE - 1222'

Base of Upper Pierre - 2460'

No SUSSEX Fm Production w/in 1 mi.

No SHANNON Fm Production w/in 1 mi.

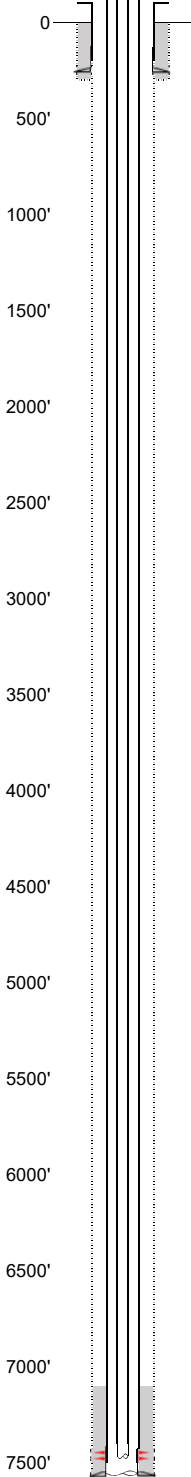
NIOBRARA - 6628'

FORT HAYS - 6945'

BENTONITE - 7264'

D SAND - 7357'

J SAND - 7405'

**EXISTING****Existing Casing and Cement Coverage**

Deepest DWR w/in 1 mi. = 410'

UPPER ARAPAHOE - 263'

LOWER ARAPAHOE - 468'

SURF: Size: 8.625", Hole Size: 12.25 in.

Depth: 258 ft., Weight: 24

Cement: 125 sx, Top: 0 ft., Method: Vis

FOX HILLS TOP - 981'

FOX HILLS BASE - 1222'

1ST, Size: 4.5", Hole Size: 7.875"

Depth: 7558 ft., Weight: 11.6

Cement: 150 sx, TOC: 7130', Method: CBL

Base of Upper Pierre - 2460'

NIOBRARA - 6628'

2 3/8" tubing @ 7486'

TOC = 7130' (CBL)

J Sand Perfs 7483' - 7500'

PBSD (ft) 7558'

TD (ft) 7558'

**PROPOSED****Depth****Plug Placement**