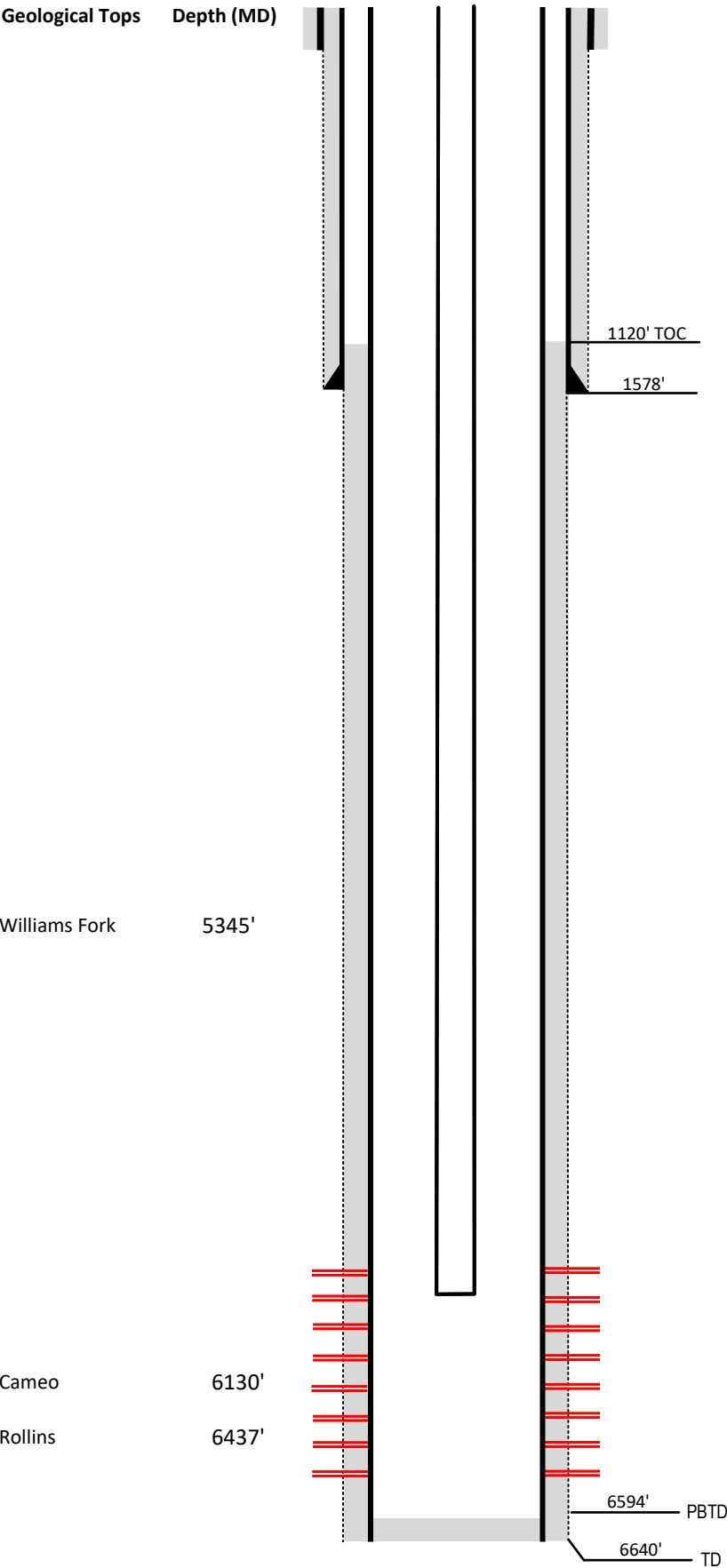


Laramie Energy

Current Wellbore Diagram
Not to scale

FEDERAL WELL: YES ☐ NO ☒



Well Name	Hawkins Ranch #10-8B
API	05-077-09485-00
Surface Location	NESE Sec 10 T10S R94W
GPS Coordinates	39.204481, -107.863271
County, State	Mesa County, Co
Diagram Date	2/13/2024

Hole	24" @ 40'
Conductor	16" @ 40'
Cement	Surface

Surface Hole	12.25" @ 1578'
Casing	8 5/8" 32# J-55 @ 1578'
Cement	420 sks
TOC	Surface

Production Hole	7.875" @ 6639'
Casing	4 1/2" 11.6# I-80 @ 6639'
Cement	800 sks
TOC	1120'

Tubing	2 3/8" J-55 EUE @ 6106'
--------	-------------------------

Perforations	Top	Bottom
	5355'	6357'