

NOBLE ENERGY, INC

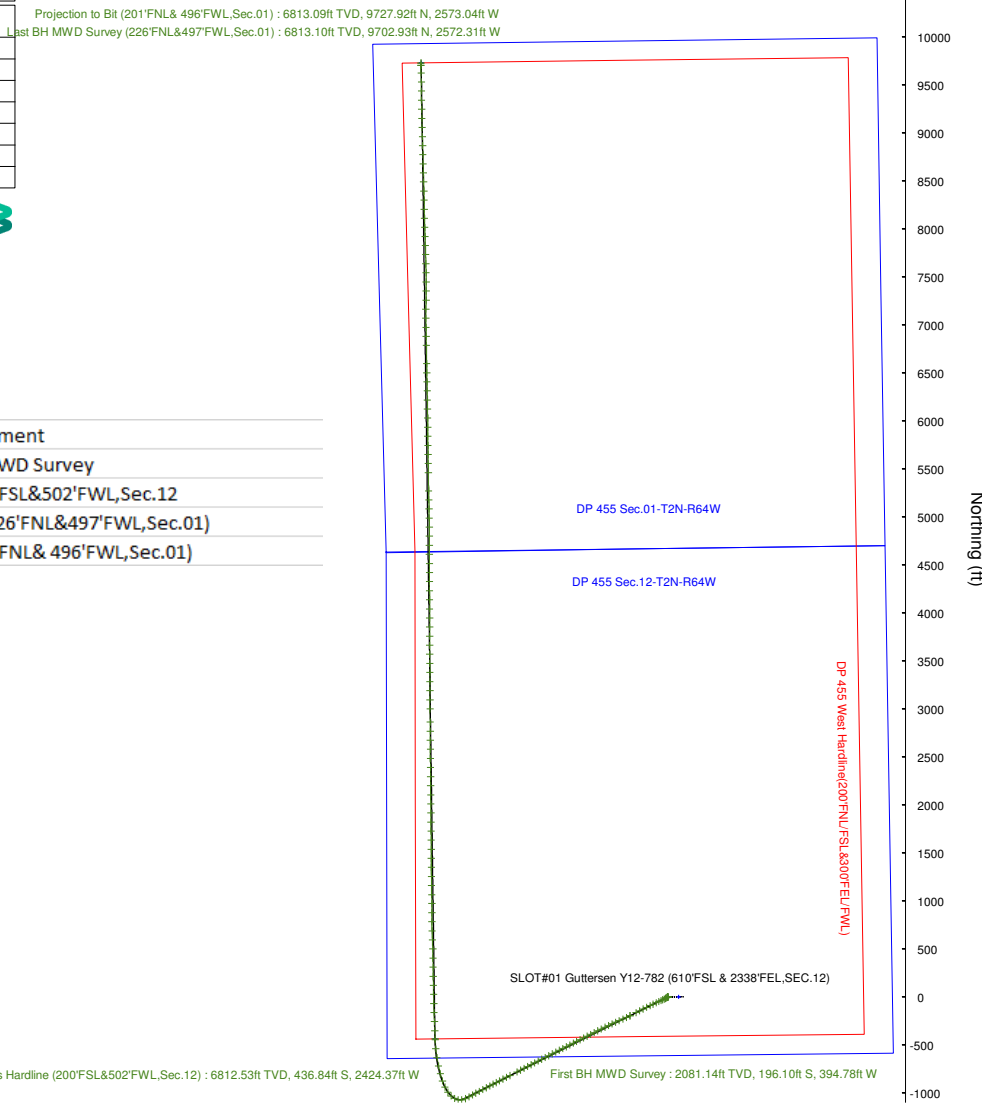
Location: COLORADO Slot: SLOT#01 Guttersen Y12-782 (610'FSL & 2338'FEL,SEC.12)
 Field: WELD COUNTY (NOBLE NAD 83 GRID) Well: Guttersen Y12-782
 Facility: SEC.12-T02N-R64W Wellbore: Guttersen Y12-782 PWB

Plot reference wellpath is Guttersen Y12-782 (REV-C.0) PWP
 True vertical depths are referenced to RIG (4863'GL+30'KB = 4893'RKB) (RKB)
 Reference wellpath measured depths are referenced to RIG (4863'GL+30'KB = 4893'RKB) (RKB)
 RIG (4863'GL+30'KB = 4893'RKB) (RKB) to Mean Sea Level: 4893 feet
 Mean Sea Level to Ground level (At Slot: SLOT#01 Guttersen Y12-782 (610'FSL & 2338'FEL,SEC.12)): 0 feet
 Offset wellpath MDs are referenced to each path's default MD datum

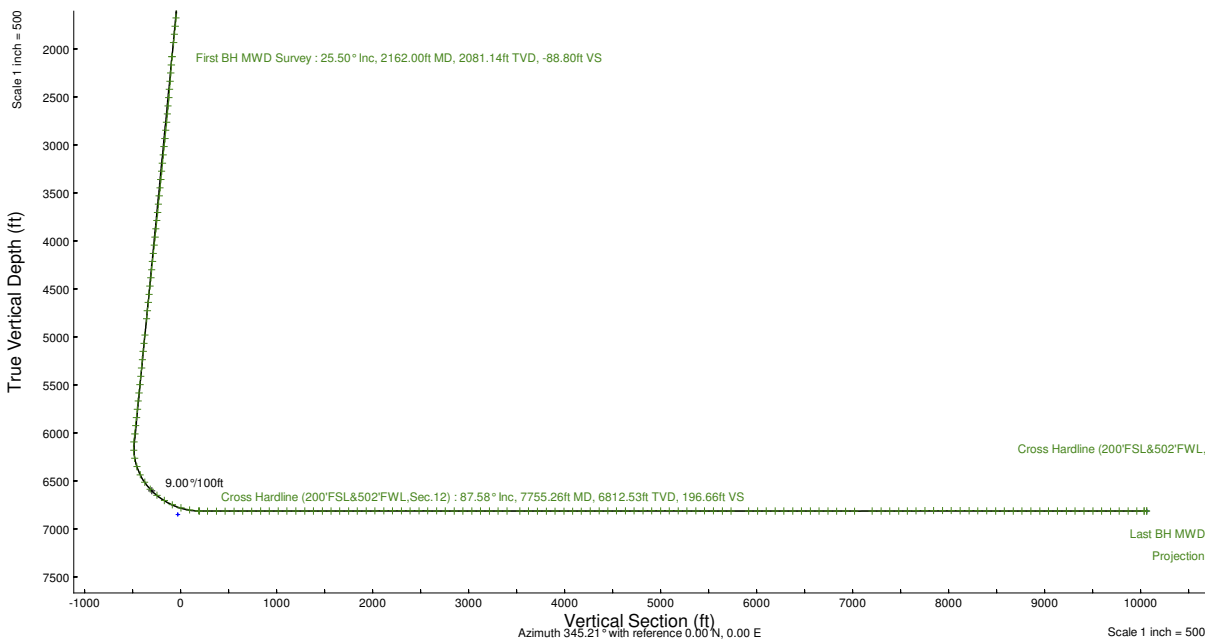
Location Information				
Facility Name	Grid East (US ft)	Grid North (US ft)	Latitude	Longitude
SEC.12-T02N-R64W	3279878.757	1298091.404	40°08'50.3448"N	104°29'55.6692"W
Slot	Local N (ft)	Local E (ft)	Grid East (US ft)	Grid North (US ft)
SLOT#01 Guttersen Y12-782 (610'FSL & 2338'FEL,SEC.12)	0.00	0.00	3279878.757	1298091.404
RIG (4863'GL+30'KB = 4893'RKB) (RKB) to Ground level (At Slot: SLOT#01 Guttersen Y12-782 (610'FSL & 2338'FEL,SEC.12))			Latitude	Longitude
			4893ft	
Mean Sea Level to Ground level (At Slot: SLOT#01 Guttersen Y12-782 (610'FSL & 2338'FEL,SEC.12))			Offset	Longitude
			0ft	
RIG (4863'GL+30'KB = 4893'RKB) (RKB) to Mean Sea Level			Offset	Longitude
			4893ft	



Scale 1 inch = 500 Easting (ft)
 -5000 -4000 -3000 -2000 -1000 0 1000 2000



MD (ft)	INC (deg)	AZ (deg)	TVD (ft)	Local N (ft)	Local E (ft)	Comment
2162	25.5	242.11	2081.14	-196.1	-394.78	First BH MWD Survey
7755.26	87.575	357.686	6812.53	-436.84	-2424.37	Cross Hardline (200'FSL&502'FWL,Sec.12)
17897	90.03	358.34	6813.1	9702.93	-2572.31	Last BH MWD Survey (226'FNL&497'FWL,Sec.01)
17922	90.03	358.34	6813.09	9727.92	-2573.04	Projection to Bit (201'FNL&496'FWL,Sec.01)



Cross Hardline (200'FSL&502'FWL,Sec.12) : 6812.53ft TVD, 436.84ft S, 2424.37ft W
 First BH MWD Survey : 2081.14ft TVD, 196.10ft S, 394.78ft W
 Last BH MWD Survey (226'FNL&497'FWL,Sec.01) : 90.03° Inc, 17897.00ft MD, 6813.10ft TVD, 10038.11ft VS
 Projection to Bit (201'FNL&496'FWL,Sec.01) : 90.03° Inc, 17922.00ft MD, 6813.09ft TVD, 10062.46ft VS

REFERENCE WELLPATH IDENTIFICATION			
Operator	NOBLE ENERGY, INC	Well	Guttersen Y12-782
Field	WELD COUNTY (NOBLE NAD 83 GRID)	API/Legal	
Facility	SEC.12-T02N-R64W	Wellbore	Guttersen Y12-782 AWB
Slot	SLOT#01 Guttersen Y12-782 (610'FSL & 2338'FEL,SEC.12)		

REPORT SETUP INFORMATION			
Projection System	NAD83 / Lambert Colorado SP, Northern Zone (501), US feet	Software System	WellArchitect® 6.0
North Reference	Grid	User	Robiale01
Scale	0.999958	Report Generated	6/12/2024 at 3:23:28 PM
Convergence at slot	0.65° East	Database	WA_Denver

WELLPATH LOCATION						
	Local coordinates		Grid coordinates		Geographic coordinates	
	North[ft]	East[ft]	Easting[US ft]	Northing[US ft]	Latitude	Longitude
Slot Location	0.00	0.00	3279878.76	1298091.40	40.1473180°	-104.4987970°
Facility Reference Pt			3279878.76	1298091.40	40.1473180°	-104.4987970°
Field Reference Pt			3000000.00	4454105.15	48.7761986°	-105.5000000°

WELLPATH DATUM			
Calculation method	Minimum curvature	RIG (4863'GL+30'KB = 4893'RKB) (RKB) to Facility Vertical Datum	4893.00ft
Horizontal Reference Pt	Slot	RIG (4863'GL+30'KB = 4893'RKB) (RKB) to Mean Sea Level	4893.00ft
Vertical Reference Pt	RIG (4863'GL+30'KB = 4893'RKB) (RKB)	RIG (4863'GL+30'KB = 4893'RKB) (RKB) to Ground Level at Slot (SLOT#01 Guttersen Y12-782 (610'FSL & 2338'FEL,SEC.12))	4893.00ft
MD Reference Pt	RIG (4863'GL+30'KB = 4893'RKB) (RKB)	Section Origin	N 0.00, E 0.00 ft
Field Vertical Reference	Mean Sea Level	Section Azimuth	345.21°

REFERENCE WELLPATH IDENTIFICATION			
Operator	NOBLE ENERGY, INC	Well	Guttersen Y12-782
Field	WELD COUNTY (NOBLE NAD 83 GRID)	API/Legal	
Facility	SEC.12-T02N-R64W	Wellbore	Guttersen Y12-782 AWB
Slot	SLOT#01 Guttersen Y12-782 (610'FSL & 2338'FEL,SEC.12)		

WELLPATH DATA (188 stations) † = interpolated, ‡ = extrapolated station										
MD [ft]	Inclination [°]	Azimuth [°]	TVD [ft]	Vert Sect [ft]	North [ft]	East [ft]	Latitude	Longitude	DLS [°/100ft]	Comments
0.00†	0.000	236.010	0.00	0.00	0.00	0.00	40.1473180	-104.4987970	0.00	
30.00	0.000	236.010	30.00	0.00	0.00	0.00	40.1473180	-104.4987970	0.00	
203.00	0.000	236.010	203.00	0.00	0.00	0.00	40.1473180	-104.4987970	0.00	
294.00	0.180	139.510	294.00	-0.13	-0.11	0.09	40.1473177	-104.4987967	0.20	
389.00	0.350	184.510	389.00	-0.54	-0.51	0.17	40.1473166	-104.4987964	0.27	
484.00	0.350	186.620	484.00	-1.08	-1.09	0.11	40.1473150	-104.4987966	0.01	
578.00	1.230	245.330	577.99	-1.52	-1.80	-0.84	40.1473131	-104.4988001	1.16	
673.00	3.250	251.830	672.91	-1.85	-3.06	-4.32	40.1473097	-104.4988126	2.14	
767.00	4.840	244.450	766.67	-2.75	-5.60	-10.43	40.1473029	-104.4988345	1.78	
862.00	5.360	233.730	861.30	-5.12	-9.96	-17.63	40.1472912	-104.4988605	1.14	
957.00	7.470	238.300	955.70	-8.55	-15.83	-26.46	40.1472754	-104.4988923	2.28	
1051.00	9.150	241.810	1048.71	-12.05	-22.57	-38.25	40.1472572	-104.4989347	1.87	
1146.00	11.260	247.610	1142.21	-15.03	-29.67	-53.48	40.1472382	-104.4989895	2.47	
1241.00	13.890	245.860	1234.92	-18.11	-37.87	-72.47	40.1472163	-104.4990577	2.80	
1335.00	16.970	245.150	1325.52	-22.34	-48.25	-95.22	40.1471885	-104.4991395	3.28	
1430.00	20.050	244.800	1415.59	-27.70	-61.01	-122.54	40.1471543	-104.4992378	3.24	
1525.00	21.900	245.150	1504.30	-33.74	-75.39	-153.35	40.1471158	-104.4993486	1.95	
1619.00	23.740	244.100	1590.93	-40.45	-91.03	-186.28	40.1470739	-104.4994670	2.00	
1714.00	25.760	244.450	1677.20	-47.98	-108.29	-222.12	40.1470277	-104.4995958	2.13	
1809.00	26.290	244.100	1762.57	-55.89	-126.38	-259.67	40.1469792	-104.4997309	0.58	
1903.00	25.410	241.810	1847.17	-64.57	-145.00	-296.17	40.1469292	-104.4998622	1.42	
1998.00	25.320	243.220	1933.01	-73.51	-163.78	-332.27	40.1468787	-104.4999921	0.64	
2162.00	25.500	242.110	2081.14	-88.80	-196.10	-394.78	40.1467920	-104.5002170	0.31	First BH MWD Survey
2256.00	25.690	246.300	2165.93	-96.54	-213.75	-431.32	40.1467446	-104.5003484	1.94	
2351.00	25.780	246.240	2251.50	-102.94	-230.35	-469.08	40.1467002	-104.5004841	0.10	
2445.00	25.970	246.380	2336.08	-109.29	-246.83	-506.65	40.1466562	-104.5006191	0.21	
2540.00	25.900	246.250	2421.51	-115.71	-263.52	-544.70	40.1466115	-104.5007559	0.09	
2635.00	25.720	244.080	2507.04	-122.92	-280.89	-582.23	40.1465650	-104.5008909	1.01	
2729.00	25.750	244.240	2591.71	-130.74	-298.68	-618.97	40.1465173	-104.5010230	0.08	
2824.00	25.760	244.360	2677.28	-138.55	-316.58	-656.16	40.1464693	-104.5011567	0.06	
2919.00	25.870	244.380	2762.80	-146.33	-334.48	-693.46	40.1464214	-104.5012909	0.12	
3013.00	26.000	243.070	2847.33	-154.51	-352.68	-730.32	40.1463726	-104.5014234	0.62	
3108.00	26.070	242.630	2932.69	-163.43	-371.70	-767.42	40.1463215	-104.5015569	0.22	
3203.00	25.810	243.610	3018.12	-172.14	-390.49	-804.49	40.1462711	-104.5016902	0.53	
3297.00	25.890	243.340	3102.71	-180.47	-408.80	-841.16	40.1462219	-104.5018221	0.15	
3392.00	25.450	243.100	3188.34	-189.02	-427.34	-877.90	40.1461722	-104.5019543	0.48	
3487.00	25.780	242.940	3274.00	-197.69	-445.97	-914.50	40.1461222	-104.5020859	0.35	
3581.00	25.410	244.090	3358.78	-205.92	-464.08	-950.84	40.1460736	-104.5022167	0.66	
3676.00	24.220	242.670	3445.00	-214.08	-481.94	-986.49	40.1460257	-104.5023449	1.40	
3771.00	25.600	243.030	3531.17	-222.64	-500.19	-1022.09	40.1459767	-104.5024730	1.46	
3866.00	25.410	242.990	3616.91	-231.28	-518.76	-1058.54	40.1459268	-104.5026041	0.20	
3960.00	24.660	242.740	3702.08	-239.78	-536.90	-1093.94	40.1458781	-104.5027314	0.81	
4055.00	25.870	242.580	3787.99	-248.59	-555.52	-1129.96	40.1458281	-104.5028610	1.28	
4150.00	25.830	242.900	3873.48	-257.53	-574.49	-1166.78	40.1457772	-104.5029935	0.15	
4245.00	25.990	242.910	3958.93	-266.38	-593.40	-1203.74	40.1457264	-104.5031264	0.17	

REFERENCE WELLPATH IDENTIFICATION			
Operator	NOBLE ENERGY, INC	Well	Guttersen Y12-782
Field	WELD COUNTY (NOBLE NAD 83 GRID)	API/Legal	
Facility	SEC.12-T02N-R64W	Wellbore	Guttersen Y12-782 AWB
Slot	SLOT#01 Guttersen Y12-782 (610'FSL & 2338'FEL,SEC.12)		

WELLPATH DATA (188 stations) † = interpolated, ‡ = extrapolated station										
MD [ft]	Inclination [°]	Azimuth [°]	TVD [ft]	Vert Sect [ft]	North [ft]	East [ft]	Latitude	Longitude	DLS [°/100ft]	Comments
4339.00	25.830	242.860	4043.48	-275.14	-612.12	-1240.30	40.1456762	-104.5032579	0.17	
4434.00	26.030	243.070	4128.92	-283.95	-631.00	-1277.30	40.1456255	-104.5033910	0.23	
4529.00	25.820	243.150	4214.36	-292.65	-649.79	-1314.34	40.1455751	-104.5035243	0.22	
4623.00	25.780	242.870	4298.99	-301.30	-668.35	-1350.80	40.1455252	-104.5036554	0.14	
4718.00	25.810	242.630	4384.52	-310.21	-687.28	-1387.55	40.1454744	-104.5037876	0.11	
4813.00	25.930	242.700	4470.00	-319.22	-706.32	-1424.37	40.1454233	-104.5039201	0.13	
4908.00	25.840	243.150	4555.47	-328.04	-725.19	-1461.30	40.1453726	-104.5040529	0.23	
5002.00	25.750	242.870	4640.10	-336.68	-743.76	-1497.75	40.1453228	-104.5041840	0.16	
5097.00	25.720	242.910	4725.68	-345.48	-762.55	-1534.47	40.1452723	-104.5043161	0.04	
5191.00	25.840	242.900	4810.33	-354.19	-781.17	-1570.86	40.1452223	-104.5044471	0.13	
5381.00	25.850	242.940	4981.32	-371.82	-818.88	-1644.61	40.1451211	-104.5047123	0.01	
5475.00	26.110	242.640	5065.82	-380.67	-837.71	-1681.23	40.1450706	-104.5048441	0.31	
5570.00	25.790	242.880	5151.24	-389.63	-856.74	-1718.19	40.1450195	-104.5049770	0.35	
5664.00	23.940	242.340	5236.53	-398.24	-874.91	-1753.29	40.1449707	-104.5051033	1.98	
5759.00	23.490	242.560	5323.50	-406.68	-892.59	-1787.16	40.1449232	-104.5052252	0.48	
5854.00	23.030	242.280	5410.78	-414.98	-909.95	-1820.41	40.1448765	-104.5053448	0.50	
5948.00	25.020	242.460	5496.64	-423.48	-927.70	-1854.32	40.1448289	-104.5054668	2.12	
6043.00	25.790	242.830	5582.45	-432.35	-946.43	-1890.52	40.1447786	-104.5055970	0.83	
6138.00	25.700	242.720	5668.02	-441.23	-965.30	-1927.21	40.1447279	-104.5057290	0.11	
6232.00	25.650	242.550	5752.74	-450.09	-984.02	-1963.38	40.1446776	-104.5058591	0.09	
6327.00	25.690	242.700	5838.36	-459.06	-1002.95	-1999.93	40.1446268	-104.5059906	0.08	
6421.00	25.730	242.690	5923.05	-467.89	-1021.65	-2036.16	40.1445766	-104.5061209	0.04	
6516.00	25.720	242.790	6008.64	-476.79	-1040.54	-2072.82	40.1445259	-104.5062528	0.05	
6611.00	25.460	242.250	6094.32	-485.80	-1059.47	-2109.22	40.1444750	-104.5063838	0.37	
6705.00	25.690	259.750	6179.23	-488.72	-1072.53	-2147.20	40.1444404	-104.5065201	8.02	
6799.00	24.190	282.680	6264.67	-478.20	-1071.92	-2186.14	40.1444432	-104.5066594	10.35	
6894.00	25.350	299.590	6351.03	-454.97	-1057.59	-2222.86	40.1444837	-104.5067901	7.53	
6989.00	30.550	311.280	6434.99	-420.66	-1031.58	-2258.74	40.1445562	-104.5069174	7.93	
7083.00	36.470	325.520	6513.45	-374.42	-992.70	-2292.59	40.1446640	-104.5070369	10.43	
7177.00	43.940	334.860	6585.26	-315.90	-940.02	-2322.33	40.1448095	-104.5071412	10.19	
7272.00	51.590	340.830	6649.10	-246.22	-874.90	-2348.61	40.1449890	-104.5072326	9.29	
7367.00	58.390	345.910	6703.59	-168.54	-800.38	-2370.71	40.1451942	-104.5073087	8.39	
7461.00	66.040	348.270	6747.38	-85.49	-719.38	-2389.22	40.1454171	-104.5073716	8.44	
7556.00	73.550	349.920	6780.17	3.39	-631.90	-2406.04	40.1456578	-104.5074283	8.07	
7651.00	80.160	355.040	6801.78	95.06	-540.26	-2418.08	40.1459097	-104.5074677	8.71	
7745.00	87.260	357.720	6812.07	186.66	-447.08	-2423.96	40.1461656	-104.5074850	8.07	
7755.26†	87.575	357.686	6812.53	196.66	-436.84	-2424.37	40.1461938	-104.5074860	3.09	Cross Hardline (200'FSL&502'FWL,Sec.12)
7840.00	90.180	357.410	6814.19	279.42	-352.20	-2428.00	40.1464262	-104.5074956	3.09	
7935.00	90.030	357.490	6814.02	372.26	-257.29	-2432.22	40.1466868	-104.5075069	0.18	
8029.00	89.940	358.330	6814.05	463.96	-163.35	-2435.65	40.1469448	-104.5075154	0.90	
8124.00	89.940	358.800	6814.14	556.39	-68.38	-2438.03	40.1472055	-104.5075201	0.49	
8218.00	90.030	358.660	6814.17	647.78	25.59	-2440.11	40.1474635	-104.5075238	0.18	
8313.00	90.120	358.640	6814.04	740.18	120.57	-2442.35	40.1477243	-104.5075280	0.10	
8408.00	90.030	358.850	6813.92	832.54	215.54	-2444.43	40.1479851	-104.5075317	0.24	
8502.00	90.220	359.340	6813.72	923.79	309.53	-2445.92	40.1482431	-104.5075332	0.56	

REFERENCE WELLPATH IDENTIFICATION			
Operator	NOBLE ENERGY, INC	Well	Guttersen Y12-782
Field	WELD COUNTY (NOBLE NAD 83 GRID)	API/Legal	
Facility	SEC.12-T02N-R64W	Wellbore	Guttersen Y12-782 AWB
Slot	SLOT#01 Guttersen Y12-782 (610'FSL & 2338'FEL,SEC.12)		

WELLPATH DATA (188 stations)										
MD [ft]	Inclination [°]	Azimuth [°]	TVD [ft]	Vert Sect [ft]	North [ft]	East [ft]	Latitude	Longitude	DLS [°/100ft]	Comments
8597.00	90.430	359.070	6813.18	1015.97	404.52	-2447.24	40.1485039	-104.5075341	0.36	
8692.00	89.600	358.910	6813.15	1108.23	499.50	-2448.91	40.1487646	-104.5075363	0.89	
8786.00	90.060	356.530	6813.43	1199.99	593.42	-2452.65	40.1490225	-104.5075459	2.58	
8881.00	90.150	358.830	6813.26	1292.74	688.34	-2456.49	40.1492832	-104.5075559	2.42	
8975.00	89.970	359.340	6813.16	1384.00	782.33	-2458.00	40.1495412	-104.5075575	0.58	
9070.00	90.090	0.190	6813.11	1475.95	877.32	-2458.39	40.1498020	-104.5075551	0.90	
9165.00	89.940	359.540	6813.08	1567.86	972.32	-2458.61	40.1500627	-104.5075521	0.70	
9258.00	90.030	358.030	6813.11	1658.25	1065.30	-2460.58	40.1503180	-104.5075554	1.63	
9353.00	90.280	359.620	6812.85	1750.58	1160.28	-2462.53	40.1505788	-104.5075586	1.69	
9447.00	90.120	359.560	6812.52	1841.63	1254.27	-2463.20	40.1508368	-104.5075572	0.18	
9542.00	90.180	359.670	6812.27	1933.64	1349.27	-2463.84	40.1510976	-104.5075557	0.13	
9636.00	90.520	359.730	6811.70	2024.65	1443.27	-2464.33	40.1513556	-104.5075537	0.37	
9731.00	90.030	359.460	6811.24	2116.67	1538.26	-2465.00	40.1516164	-104.5075523	0.59	
9826.00	90.180	359.770	6811.07	2208.68	1633.26	-2465.64	40.1518771	-104.5075508	0.36	
9920.00	89.720	358.790	6811.15	2299.86	1727.25	-2466.82	40.1521352	-104.5075512	1.15	
10015.00	90.090	0.060	6811.31	2391.95	1822.25	-2467.78	40.1523959	-104.5075508	1.39	
10109.00	89.880	359.260	6811.33	2482.97	1916.24	-2468.33	40.1526540	-104.5075491	0.88	
10204.00	89.820	359.370	6811.58	2575.10	2011.24	-2469.47	40.1529147	-104.5075493	0.13	
10298.00	89.660	359.440	6812.01	2666.23	2105.23	-2470.45	40.1531728	-104.5075491	0.19	
10393.00	89.720	359.500	6812.52	2758.30	2200.22	-2471.33	40.1534335	-104.5075484	0.09	
10488.00	90.030	359.490	6812.73	2850.36	2295.22	-2472.16	40.1536943	-104.5075476	0.33	
10582.00	89.850	359.600	6812.83	2941.44	2389.22	-2472.91	40.1539523	-104.5075465	0.22	
10677.00	89.970	359.740	6812.98	3033.42	2484.22	-2473.46	40.1542131	-104.5075447	0.19	
10772.00	90.280	359.690	6812.77	3125.39	2579.21	-2473.93	40.1544739	-104.5075425	0.33	
10866.00	89.940	359.740	6812.59	3216.40	2673.21	-2474.40	40.1547319	-104.5075404	0.37	
10961.00	89.750	359.550	6812.85	3308.40	2768.21	-2474.98	40.1549927	-104.5075387	0.28	
11056.00	90.060	359.570	6813.00	3400.43	2863.21	-2475.71	40.1552535	-104.5075376	0.33	
11193.00	89.660	359.280	6813.34	3533.23	3000.20	-2477.09	40.1556295	-104.5075370	0.36	
11288.00	89.690	359.610	6813.88	3625.31	3095.19	-2478.01	40.1558903	-104.5075365	0.35	
11383.00	89.780	359.520	6814.32	3717.34	3190.19	-2478.73	40.1561511	-104.5075353	0.13	
11478.00	89.970	359.900	6814.53	3809.32	3285.19	-2479.21	40.1564118	-104.5075332	0.45	
11572.00	89.970	359.810	6814.57	3900.26	3379.19	-2479.45	40.1566699	-104.5075303	0.10	
11667.00	90.030	359.510	6814.57	3992.25	3474.19	-2480.01	40.1569306	-104.5075285	0.32	
11762.00	89.850	359.390	6814.67	4084.33	3569.18	-2480.92	40.1571914	-104.5075279	0.23	
11856.00	90.250	0.100	6814.59	4175.32	3663.18	-2481.34	40.1574494	-104.5075257	0.87	
11951.00	91.050	359.710	6813.51	4267.21	3758.17	-2481.50	40.1577102	-104.5075224	0.94	
12046.00	90.370	359.760	6812.34	4359.16	3853.16	-2481.94	40.1579709	-104.5075202	0.72	
12140.00	89.910	359.810	6812.11	4450.14	3947.16	-2482.29	40.1582289	-104.5075177	0.49	
12235.00	89.850	359.670	6812.31	4542.10	4042.16	-2482.72	40.1584897	-104.5075154	0.16	
12330.00	90.060	359.930	6812.38	4634.03	4137.16	-2483.06	40.1587505	-104.5075128	0.35	
12424.00	90.430	359.850	6811.98	4724.96	4231.16	-2483.24	40.1590085	-104.5075097	0.40	
12519.00	90.180	359.700	6811.47	4816.90	4326.16	-2483.61	40.1592693	-104.5075072	0.31	
12614.00	90.030	359.910	6811.30	4908.84	4421.16	-2483.93	40.1595300	-104.5075046	0.27	
12708.00	90.120	359.880	6811.18	4999.77	4515.16	-2484.10	40.1597880	-104.5075014	0.10	
12803.00	89.880	359.790	6811.18	5091.69	4610.16	-2484.38	40.1600488	-104.5074986	0.27	

REFERENCE WELLPATH IDENTIFICATION			
Operator	NOBLE ENERGY, INC	Well	Guttersen Y12-782
Field	WELD COUNTY (NOBLE NAD 83 GRID)	API/Legal	
Facility	SEC.12-T02N-R64W	Wellbore	Guttersen Y12-782 AWB
Slot	SLOT#01 Guttersen Y12-782 (610'FSL & 2338'FEL,SEC.12)		

WELLPATH DATA (188 stations)										
MD [ft]	Inclination [°]	Azimuth [°]	TVD [ft]	Vert Sect [ft]	North [ft]	East [ft]	Latitude	Longitude	DLS [°/100ft]	Comments
12898.00	89.780	359.910	6811.46	5183.60	4705.15	-2484.63	40.1603096	-104.5074957	0.16	
12992.00	90.000	359.660	6811.64	5274.57	4799.15	-2484.98	40.1605676	-104.5074932	0.35	
13087.00	89.850	359.750	6811.76	5366.55	4894.15	-2485.47	40.1608284	-104.5074911	0.18	
13181.00	89.690	358.740	6812.14	5457.74	4988.14	-2486.71	40.1610864	-104.5074918	1.09	
13276.00	90.090	359.180	6812.32	5550.01	5083.13	-2488.43	40.1613472	-104.5074942	0.63	
13371.00	89.570	358.600	6812.60	5642.32	5178.11	-2490.27	40.1616079	-104.5074969	0.82	
13465.00	90.030	358.930	6812.93	5733.70	5272.08	-2492.30	40.1618659	-104.5075004	0.60	
13654.00	89.850	359.180	6813.13	5917.20	5461.06	-2495.41	40.1623847	-104.5075040	0.16	
13749.00	89.850	359.280	6813.38	6009.37	5556.05	-2496.69	40.1626455	-104.5075048	0.11	
13844.00	89.780	358.820	6813.69	6101.61	5651.03	-2498.27	40.1629063	-104.5075066	0.49	
13938.00	90.650	359.260	6813.33	6192.88	5745.02	-2499.84	40.1631643	-104.5075085	1.04	
14033.00	90.030	359.280	6812.77	6285.03	5840.01	-2501.05	40.1634251	-104.5075090	0.65	
14127.00	90.000	359.810	6812.74	6376.10	5934.01	-2501.80	40.1636831	-104.5075079	0.56	
14222.00	89.910	359.080	6812.82	6468.19	6029.00	-2502.72	40.1639439	-104.5075074	0.77	
14317.00	89.690	359.030	6813.15	6560.42	6123.99	-2504.29	40.1642047	-104.5075092	0.24	
14411.00	89.850	359.300	6813.53	6651.65	6217.98	-2505.66	40.1644627	-104.5075103	0.33	
14506.00	89.820	358.700	6813.80	6743.91	6312.96	-2507.31	40.1647235	-104.5075125	0.63	
14600.00	89.660	358.830	6814.23	6835.29	6406.94	-2509.34	40.1649815	-104.5075159	0.22	
14695.00	89.970	359.030	6814.54	6927.57	6501.92	-2511.11	40.1652422	-104.5075185	0.39	
14790.00	89.690	358.810	6814.82	7019.86	6596.90	-2512.90	40.1655030	-104.5075211	0.37	
14979.00	91.110	359.100	6813.50	7203.44	6785.86	-2516.35	40.1660218	-104.5075259	0.77	
15074.00	89.750	358.980	6812.78	7295.68	6880.85	-2517.94	40.1662825	-104.5075278	1.44	
15168.00	89.780	358.860	6813.17	7387.00	6974.83	-2519.71	40.1665406	-104.5075303	0.13	
15263.00	89.720	358.810	6813.58	7479.32	7069.81	-2521.65	40.1668013	-104.5075334	0.08	
15358.00	91.080	2.010	6812.92	7570.98	7164.79	-2520.97	40.1670620	-104.5075272	3.66	
15452.00	90.680	0.900	6811.48	7661.22	7258.74	-2518.58	40.1673198	-104.5075149	1.26	
15547.00	90.920	0.280	6810.15	7752.80	7353.73	-2517.60	40.1675805	-104.5075076	0.70	
15642.00	90.370	359.540	6809.08	7844.69	7448.72	-2517.75	40.1678413	-104.5075043	0.97	
15736.00	90.150	358.850	6808.66	7935.90	7542.71	-2519.07	40.1680993	-104.5075053	0.77	
15831.00	89.480	358.280	6808.96	8028.32	7637.68	-2521.45	40.1683600	-104.5075100	0.93	
15926.00	89.750	358.580	6809.60	8120.80	7732.64	-2524.05	40.1686208	-104.5075155	0.42	
16020.00	89.510	358.230	6810.21	8212.32	7826.60	-2526.67	40.1688788	-104.5075211	0.45	
16115.00	89.450	358.260	6811.07	8304.87	7921.56	-2529.58	40.1691395	-104.5075277	0.07	
16210.00	89.480	358.120	6811.96	8397.43	8016.50	-2532.58	40.1694002	-104.5075346	0.15	
16304.00	89.450	358.140	6812.83	8489.05	8110.45	-2535.65	40.1696581	-104.5075419	0.04	
16399.00	90.090	359.310	6813.22	8581.41	8205.42	-2537.76	40.1699189	-104.5075456	1.40	
16494.00	90.030	358.690	6813.12	8673.67	8300.41	-2539.42	40.1701797	-104.5075477	0.66	
16588.00	90.250	358.560	6812.89	8765.11	8394.38	-2541.67	40.1704377	-104.5075520	0.27	
16683.00	89.630	358.250	6812.99	8857.60	8489.34	-2544.32	40.1706984	-104.5075577	0.73	
16778.00	89.880	358.140	6813.39	8950.17	8584.30	-2547.31	40.1709591	-104.5075646	0.29	
16872.00	89.940	358.540	6813.54	9041.71	8678.26	-2550.03	40.1712171	-104.5075706	0.43	
16967.00	89.940	358.590	6813.64	9134.14	8773.23	-2552.41	40.1714779	-104.5075753	0.05	
17062.00	90.150	358.590	6813.56	9226.56	8868.20	-2554.75	40.1717386	-104.5075799	0.22	
17156.00	89.910	358.300	6813.52	9318.06	8962.16	-2557.30	40.1719966	-104.5075852	0.40	
17251.00	90.060	358.560	6813.54	9410.54	9057.13	-2559.90	40.1722574	-104.5075907	0.32	

REFERENCE WELLPATH IDENTIFICATION

Operator	NOBLE ENERGY, INC	Well	Guttersen Y12-782
Field	WELD COUNTY (NOBLE NAD 83 GRID)	API/Legal	
Facility	SEC.12-T02N-R64W	Wellbore	Guttersen Y12-782 AWB
Slot	SLOT#01 Guttersen Y12-782 (610'FSL & 2338'FEL,SEC.12)		

WELLPATH DATA (188 stations) † = interpolated, ‡ = extrapolated station

MD [ft]	Inclination [°]	Azimuth [°]	TVD [ft]	Vert Sect [ft]	North [ft]	East [ft]	Latitude	Longitude	DLS [°/100ft]	Comments
17346.00	89.780	358.480	6813.67	9502.99	9152.09	-2562.36	40.1725181	-104.5075957	0.31	
17440.00	90.030	358.590	6813.83	9594.45	9246.06	-2564.76	40.1727761	-104.5076005	0.29	
17535.00	89.720	358.490	6814.04	9686.89	9341.03	-2567.18	40.1730369	-104.5076054	0.34	
17630.00	90.620	1.470	6813.75	9778.74	9436.02	-2567.21	40.1732976	-104.5076017	3.28	
17724.00	89.820	358.410	6813.39	9869.64	9530.01	-2567.31	40.1735556	-104.5075983	3.36	
17819.00	90.280	358.310	6813.31	9962.15	9624.97	-2570.03	40.1738163	-104.5076042	0.50	
17897.00	90.030	358.340	6813.10	10038.11	9702.93	-2572.31	40.1740304	-104.5076093	0.32	Last BH MWD Survey (226'FNL&497'FWL,Sec.01)
17922.00†	90.030	358.340	6813.09	10062.46	9727.92	-2573.04	40.1740990	-104.5076109	0.00	Projection to Bit (201'FNL& 496'FWL,Sec.01)

TARGETS

Name	TVD [ft]	North [ft]	East [ft]	Grid East [US ft]	Grid North [US ft]	Latitude	Longitude	Shape
DP 455 Sec.01-T2N-R64W	-3.00	0.00	0.00	3279878.76	1298091.40	40.1473180	-104.4987970	polygon
2D Polygon: dimensions not calculated								
DP 455 Sec.12-T2N-R64W	-3.00	0.00	0.00	3279878.76	1298091.40	40.1473180	-104.4987970	polygon
2D Polygon: dimensions not calculated								
Guttersen Y12-782 BHL (200'FNL & 500'FWL,SEC.01)	6814.00	9728.95	-2569.27	3277309.60	1307819.93	40.1741017	-104.5075974	point
Guttersen Y12-782 BPZ (200'FNL & 500'FWL,SEC.01)	6814.00	9728.95	-2569.27	3277309.60	1307819.93	40.1741017	-104.5075974	point
Guttersen Y12-782 LP (200'FSL & 500'FWL,SEC.12)	6814.00	-436.84	-2426.35	3277452.51	1297654.58	40.1461938	-104.5074931	point
DP 455 West Hardline (200'FNL/FSL&300'FEL/FWL)	6849.00	0.90	112.38	3279991.13	1298092.31	40.1473170	-104.4983950	polygon
2D Polygon: dimensions not calculated								

WELLPATH COMPOSITION - Ref Wellbore: Guttersen Y12-782 AWB Ref Wellpath: Guttersen Y12-782 AWP

Start MD [ft]	End MD [ft]	Positional Uncertainty Model	Log Name/Comment	Wellbore	Survey Date
30.00	1998.00	OWSG MWD rev2 - Standard	13.5" Surface OWSG MWD rev2 - Standard	Guttersen Y12-782 AWB	6/12/2024
1998.00	17922.00	OWSG MWD rev2 (MS+IFR1)	8.5" Monobore OWSG MWD rev2 (MS+IFR1)	Guttersen Y12-782 AWB	6/12/2024

REFERENCE WELLPATH IDENTIFICATION			
Operator	NOBLE ENERGY, INC	Well	Guttersen Y12-782
Field	WELD COUNTY (NOBLE NAD 83 GRID)	API/Legal	
Facility	SEC.12-T02N-R64W	Wellbore	Guttersen Y12-782 AWB
Slot	SLOT#01 Guttersen Y12-782 (610'FSL & 2338'FEL,SEC.12)		

WELLPATH COMMENTS				
MD [ft]	Inclination [°]	Azimuth [°]	TVD [ft]	Comment
2162.00	25.500	242.110	2081.14	First BH MWD Survey
7755.26	87.575	357.686	6812.53	Cross Hardline (200'FSL&502'FWL,Sec.12)
17897.00	90.030	358.340	6813.10	Last BH MWD Survey (226'FNL&497'FWL,Sec.01)
17922.00	90.030	358.340	6813.09	Projection to Bit (201'FNL& 496'FWL,Sec.01)