

# NOBLE ENERGY, INC

Location: COLORADO Slot: SLOT#02 Guttersen Y12-773 (610'FSL & 2316'FEL,SEC.12)  
 Field: WELD COUNTY (NOBLE NAD 83 GRID) Well: Guttersen Y12-773  
 Facility: SEC.12-T02N-R64W Wellbore: Guttersen Y12-773 PWB

Plot reference wellpath is Guttersen Y12-773 (REV-C.0) PWP  
 True vertical depths are referenced to RIG (4863'GL+30'KB = 4893'RKB) (RKB)  
 Reference wellpath measured depths are referenced to RIG (4863'GL+30'KB = 4893'RKB) (RKB)  
 RIG (4863'GL+30'KB = 4893'RKB) (RKB) to Mean Sea Level: 4893 feet  
 Mean Sea Level to Ground level (At Slot: SLOT#02 Guttersen Y12-773 (610'FSL & 2316'FEL,SEC.12)): 0 feet  
 Offset wellpath MDs are referenced to each path's default MD datum

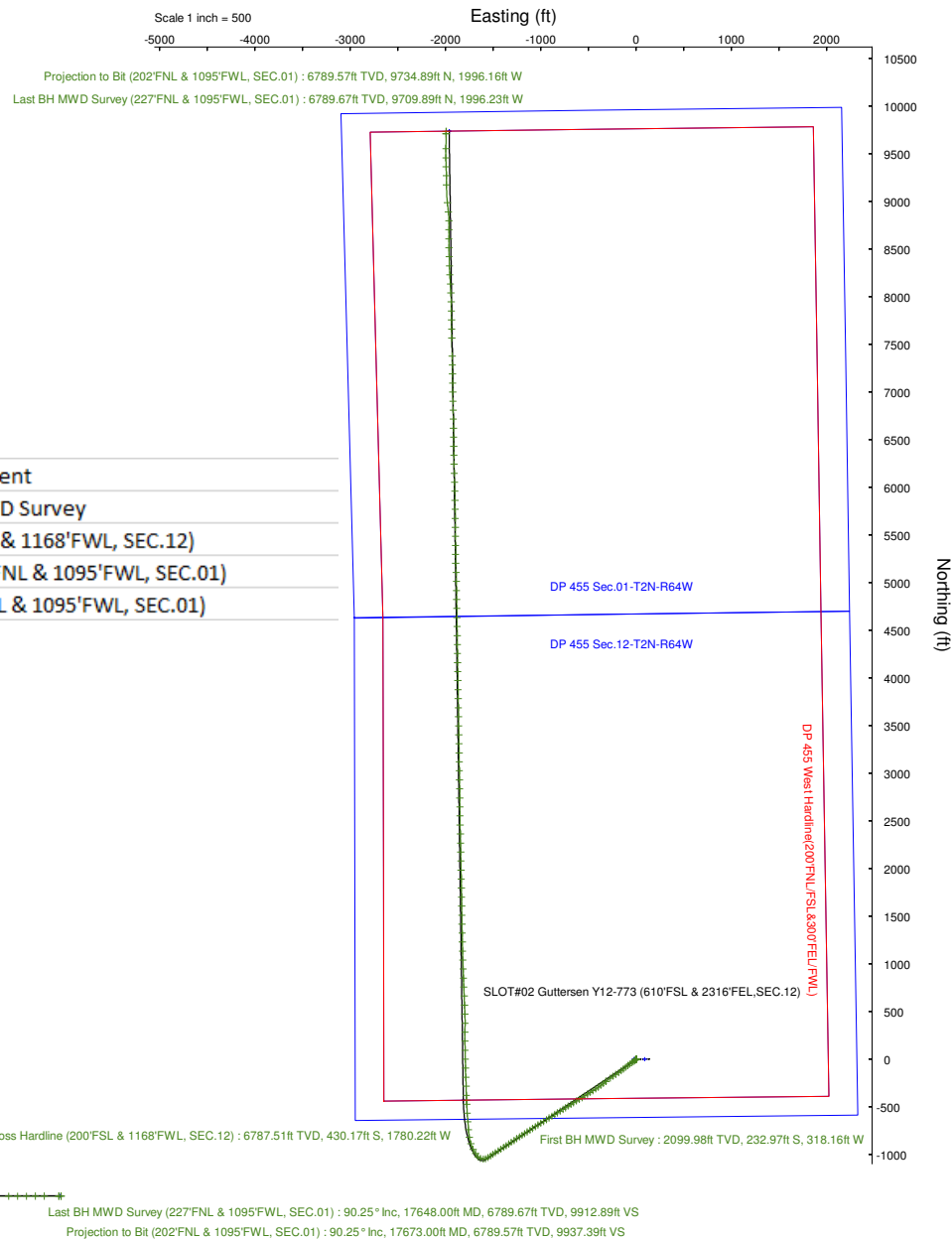
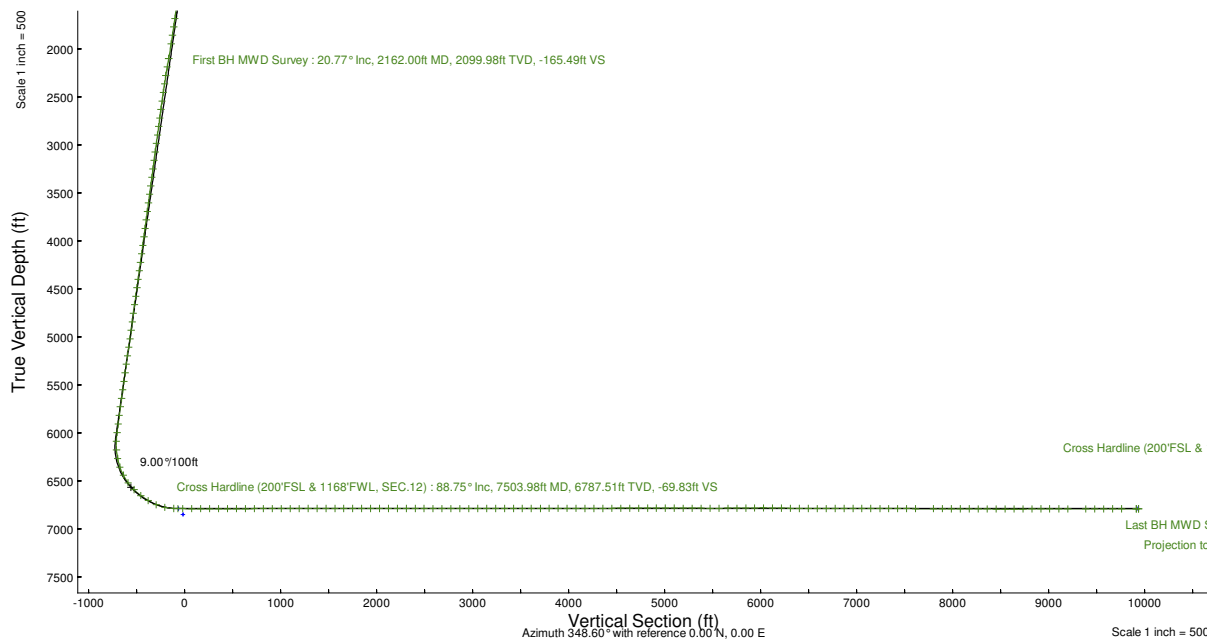
Grid System: NAD83 / Lambert Colorado SP, Northern Zone (501), US feet  
 North Reference: Grid north  
 Scale: True distance  
 Coordinates are in feet referenced to Slot  
 Depths are in feet  
 Created by: robiale01 on 2024-06-13; Database: WA\_Denver

## Location Information

Facility Name	Grid East (US ft)	Grid North (US ft)	Latitude	Longitude		
SEC.12-T02N-R64W	3279678.757	1298091.404	40°08'50.3448"N	104°29'55.6692"W		
Slot	Local N (ft)	Local E (ft)	Grid East (US ft)	Grid North (US ft)	Latitude	Longitude
SLOT#02 Guttersen Y12-773 (610'FSL & 2316'FEL,SEC.12)	0.25	22.36	3279901.120	1298091.657	40°08'50.3448"N	104°29'55.3812"W
RIG (4863'GL+30'KB = 4893'RKB) (RKB) to Ground level (At Slot: SLOT#02 Guttersen Y12-773 (610'FSL & 2316'FEL,SEC.12))						4893ft
Mean Sea Level to Ground level (At Slot: SLOT#02 Guttersen Y12-773 (610'FSL & 2316'FEL,SEC.12))						0ft
RIG (4863'GL+30'KB = 4893'RKB) (RKB) to Mean Sea Level						4893ft



MD (ft)	INC (deg)	AZ (deg)	TVD (ft)	Local N (ft)	Local E (ft)	Comment
2162	20.77	231.5	2099.98	-232.97	-318.16	First BH MWD Survey
7503.98	88.751	357.749	6787.51	-430.17	-1780.22	Cross Hardline (200'FSL & 1168'FWL, SEC.12)
17648	90.25	0.17	6789.67	9709.89	-1996.23	Last BH MWD Survey (227'FNL & 1095'FWL, SEC.01)
17673	90.25	0.17	6789.57	9734.89	-1996.16	Projection to Bit (202'FNL & 1095'FWL, SEC.01)



REFERENCE WELLPATH IDENTIFICATION			
Operator	NOBLE ENERGY, INC	Well	Guttersen Y12-773
Field	WELD COUNTY (NOBLE NAD 83 GRID)	API/Legal	
Facility	SEC.12-T02N-R64W	Wellbore	Guttersen Y12-773 AWB
Slot	SLOT#02 Guttersen Y12-773 (610'FSL & 2316'FEL,SEC.12)		

REPORT SETUP INFORMATION			
Projection System	NAD83 / Lambert Colorado SP, Northern Zone (501), US feet	Software System	WellArchitect® 6.0
North Reference	Grid	User	Robiale01
Scale	0.999958	Report Generated	6/13/2024 at 1:25:07 PM
Convergence at slot	0.65° East	Database	WA_Denver

WELLPATH LOCATION						
	Local coordinates		Grid coordinates		Geographic coordinates	
	North[ft]	East[ft]	Easting[US ft]	Northing[US ft]	Latitude	Longitude
Slot Location	0.25	22.36	3279901.12	1298091.66	40.1473180°	-104.4987170°
Facility Reference Pt			3279878.76	1298091.40	40.1473180°	-104.4987970°
Field Reference Pt			3000000.00	4454105.15	48.7761986°	-105.5000000°

WELLPATH DATUM			
Calculation method	Minimum curvature	RIG (4863'GL+30'KB = 4893'RKB) (RKB) to Facility Vertical Datum	4893.00ft
Horizontal Reference Pt	Slot	RIG (4863'GL+30'KB = 4893'RKB) (RKB) to Mean Sea Level	4893.00ft
Vertical Reference Pt	RIG (4863'GL+30'KB = 4893'RKB) (RKB)	RIG (4863'GL+30'KB = 4893'RKB) (RKB) to Ground Level at Slot (SLOT#02 Guttersen Y12-773 (610'FSL & 2316'FEL,SEC.12))	4893.00ft
MD Reference Pt	RIG (4863'GL+30'KB = 4893'RKB) (RKB)	Section Origin	N 0.00, E 0.00 ft
Field Vertical Reference	Mean Sea Level	Section Azimuth	348.60°

REFERENCE WELLPATH IDENTIFICATION			
Operator	NOBLE ENERGY, INC	Well	Guttersen Y12-773
Field	WELD COUNTY (NOBLE NAD 83 GRID)	API/Legal	
Facility	SEC.12-T02N-R64W	Wellbore	Guttersen Y12-773 AWB
Slot	SLOT#02 Guttersen Y12-773 (610'FSL & 2316'FEL,SEC.12)		

WELLPATH DATA (186 stations) † = interpolated, ‡ = extrapolated station										
MD [ft]	Inclination [°]	Azimuth [°]	TVD [ft]	Vert Sect [ft]	North [ft]	East [ft]	Latitude	Longitude	DLS [°/100ft]	Comments
0.00†	0.000	56.550	0.00	0.00	0.00	0.00	40.1473180	-104.4987170	0.00	
30.00	0.000	56.550	30.00	0.00	0.00	0.00	40.1473180	-104.4987170	0.00	
203.00	0.260	56.550	203.00	0.15	0.22	0.33	40.1473186	-104.4987158	0.15	
294.00	0.530	49.340	294.00	0.43	0.60	0.82	40.1473196	-104.4987140	0.30	
389.00	0.530	26.140	388.99	0.99	1.29	1.35	40.1473215	-104.4987121	0.22	
484.00	0.530	21.390	483.99	1.71	2.09	1.70	40.1473237	-104.4987108	0.05	
578.00	0.620	266.960	577.99	2.15	2.47	1.35	40.1473247	-104.4987121	1.03	
673.00	2.200	212.820	672.96	0.92	0.91	-0.15	40.1473205	-104.4987175	2.00	
767.00	4.400	224.420	766.80	-2.40	-3.19	-3.65	40.1473094	-104.4987302	2.43	
862.00	6.240	228.820	861.38	-7.01	-9.19	-10.09	40.1472931	-104.4987535	1.98	
957.00	8.440	232.860	955.60	-12.61	-16.80	-19.54	40.1472725	-104.4987876	2.38	
1051.00	10.640	235.320	1048.30	-19.03	-25.90	-32.17	40.1472479	-104.4988331	2.38	
1146.00	13.370	235.140	1141.21	-26.87	-37.17	-48.40	40.1472175	-104.4988916	2.87	
1241.00	15.120	233.030	1233.28	-36.59	-50.90	-67.31	40.1471804	-104.4989598	1.92	
1335.00	16.800	233.390	1323.66	-47.67	-66.38	-88.01	40.1471385	-104.4990345	1.79	
1430.00	17.940	231.100	1414.33	-60.28	-83.75	-110.42	40.1470915	-104.4991153	1.40	
1525.00	19.080	232.330	1504.41	-73.91	-102.43	-134.10	40.1470410	-104.4992008	1.27	
1619.00	19.430	232.860	1593.15	-87.50	-121.26	-158.72	40.1469901	-104.4992896	0.42	
1714.00	21.460	236.730	1682.17	-100.83	-140.34	-185.85	40.1469386	-104.4993874	2.57	
1809.00	21.980	238.480	1770.42	-113.42	-159.16	-215.54	40.1468878	-104.4994944	0.87	
1903.00	21.280	234.970	1857.81	-126.31	-178.15	-244.50	40.1468366	-104.4995987	1.56	
1998.00	20.580	233.910	1946.54	-140.20	-197.88	-272.11	40.1467833	-104.4996983	0.84	
2162.00	20.770	231.500	2099.98	-165.49	-232.97	-318.16	40.1466884	-104.4998644	0.53	First BH MWD Survey
2256.00	20.790	230.280	2187.86	-180.99	-254.00	-344.04	40.1466315	-104.4999578	0.46	
2351.00	20.190	234.530	2276.86	-195.68	-274.29	-370.36	40.1465766	-104.5000528	1.69	
2445.00	21.010	236.800	2364.85	-208.55	-292.93	-397.67	40.1465263	-104.5001512	1.22	
2540.00	21.180	236.360	2453.48	-221.37	-311.76	-426.21	40.1464755	-104.5002541	0.24	
2635.00	21.040	236.920	2542.11	-234.17	-330.58	-454.79	40.1464247	-104.5003570	0.26	
2729.00	21.000	238.310	2629.85	-246.24	-348.64	-483.26	40.1463760	-104.5004596	0.53	
2824.00	20.770	238.330	2718.61	-257.98	-366.42	-512.08	40.1463281	-104.5005634	0.24	
2919.00	20.720	237.580	2807.45	-269.85	-384.28	-540.60	40.1462800	-104.5006661	0.28	
3013.00	22.000	238.310	2894.99	-281.92	-402.44	-569.62	40.1462310	-104.5007707	1.39	
3108.00	20.740	238.430	2983.46	-293.89	-420.60	-599.10	40.1461821	-104.5008768	1.33	
3203.00	21.300	238.200	3072.14	-305.70	-438.49	-628.09	40.1461338	-104.5009812	0.60	
3297.00	21.100	238.040	3159.78	-317.60	-456.45	-656.96	40.1460855	-104.5010852	0.22	
3392.00	20.970	238.150	3248.45	-329.54	-474.47	-685.90	40.1460369	-104.5011895	0.14	
3487.00	20.060	238.320	3337.42	-341.13	-492.00	-714.21	40.1459897	-104.5012914	0.96	
3581.00	20.080	237.820	3425.71	-352.44	-509.06	-741.59	40.1459437	-104.5013900	0.18	
3676.00	21.060	238.060	3514.65	-364.22	-526.77	-769.88	40.1458959	-104.5014919	1.04	
3771.00	20.910	238.090	3603.35	-376.15	-544.76	-798.75	40.1458474	-104.5015959	0.16	
3866.00	21.080	238.400	3692.05	-387.98	-562.68	-827.69	40.1457992	-104.5017002	0.21	
3960.00	20.370	238.480	3779.96	-399.45	-580.09	-856.04	40.1457522	-104.5018022	0.76	
4055.00	21.350	238.100	3868.73	-411.19	-597.87	-884.81	40.1457043	-104.5019059	1.04	
4150.00	21.130	238.320	3957.28	-423.19	-616.00	-914.07	40.1456555	-104.5020112	0.25	
4245.00	21.020	237.910	4045.93	-435.14	-634.05	-943.07	40.1456068	-104.5021157	0.19	

REFERENCE WELLPATH IDENTIFICATION			
Operator	NOBLE ENERGY, INC	Well	Guttersen Y12-773
Field	WELD COUNTY (NOBLE NAD 83 GRID)	API/Legal	
Facility	SEC.12-T02N-R64W	Wellbore	Guttersen Y12-773 AWB
Slot	SLOT#02 Guttersen Y12-773 (610'FSL & 2316'FEL,SEC.12)		

WELLPATH DATA (186 stations) † = interpolated, ‡ = extrapolated station										
MD [ft]	Inclination [°]	Azimuth [°]	TVD [ft]	Vert Sect [ft]	North [ft]	East [ft]	Latitude	Longitude	DLS [°/100ft]	Comments
4339.00	21.560	237.460	4133.51	-447.33	-652.29	-971.92	40.1455576	-104.5022196	0.60	
4434.00	21.050	238.010	4222.02	-459.62	-670.72	-1001.10	40.1455080	-104.5023247	0.58	
4529.00	21.130	238.070	4310.66	-471.63	-688.81	-1030.10	40.1454592	-104.5024292	0.09	
4623.00	21.080	236.680	4398.35	-483.88	-707.06	-1058.61	40.1454100	-104.5025319	0.54	
4718.00	20.610	237.110	4487.13	-496.38	-725.52	-1086.93	40.1453602	-104.5026339	0.52	
4813.00	21.220	237.340	4575.87	-508.74	-743.88	-1115.44	40.1453107	-104.5027367	0.65	
4908.00	20.850	236.790	4664.54	-521.26	-762.42	-1144.06	40.1452607	-104.5028398	0.44	
5002.00	20.950	237.310	4752.36	-533.58	-780.66	-1172.20	40.1452115	-104.5029411	0.22	
5097.00	18.570	238.400	4841.76	-544.97	-797.76	-1199.38	40.1451654	-104.5030390	2.54	
5191.00	19.920	237.050	4930.50	-556.02	-814.31	-1225.57	40.1451207	-104.5031334	1.51	
5286.00	21.900	237.760	5019.24	-568.27	-832.57	-1254.14	40.1450715	-104.5032363	2.10	
5381.00	20.890	232.900	5107.70	-581.92	-852.24	-1282.63	40.1450184	-104.5033390	2.15	
5475.00	20.790	237.030	5195.56	-595.32	-871.43	-1310.00	40.1449666	-104.5034377	1.57	
5570.00	20.400	236.790	5284.48	-607.67	-889.67	-1338.00	40.1449174	-104.5035385	0.42	
5664.00	19.850	236.930	5372.74	-619.65	-907.35	-1365.08	40.1448697	-104.5036361	0.59	
5759.00	20.650	236.720	5461.87	-631.85	-925.35	-1392.60	40.1448211	-104.5037353	0.85	
5854.00	20.700	237.090	5550.75	-644.25	-943.66	-1420.70	40.1447717	-104.5038365	0.15	
5948.00	20.720	236.790	5638.68	-656.52	-961.80	-1448.56	40.1447228	-104.5039369	0.11	
6043.00	20.730	236.830	5727.53	-669.00	-980.20	-1476.69	40.1446732	-104.5040382	0.02	
6137.00	18.840	237.270	5815.98	-680.69	-997.51	-1503.39	40.1446265	-104.5041344	2.02	
6232.00	18.990	237.180	5905.85	-691.91	-1014.18	-1529.28	40.1445815	-104.5042277	0.16	
6327.00	19.000	236.940	5995.68	-703.27	-1030.99	-1555.23	40.1445361	-104.5043212	0.08	
6421.00	16.620	246.210	6085.18	-711.80	-1044.77	-1580.36	40.1444991	-104.5044116	3.93	
6516.00	16.590	278.840	6176.42	-710.02	-1048.17	-1606.25	40.1444906	-104.5045044	9.69	
6611.00	19.170	290.500	6266.85	-697.08	-1040.62	-1634.28	40.1445122	-104.5046043	4.63	
6705.00	21.970	316.400	6355.03	-673.99	-1022.44	-1660.92	40.1445629	-104.5046989	10.04	
6799.00	29.430	327.780	6439.72	-637.46	-990.11	-1685.41	40.1446524	-104.5047851	9.48	
6894.00	37.120	332.400	6519.10	-588.03	-944.88	-1711.18	40.1447773	-104.5048755	8.52	
6989.00	45.250	341.950	6590.61	-526.83	-887.25	-1734.97	40.1449362	-104.5049583	10.80	
7083.00	53.660	350.000	6661.72	-455.64	-818.04	-1751.94	40.1451267	-104.5050162	11.05	
7177.00	57.870	357.450	6704.64	-378.35	-740.89	-1760.29	40.1453388	-104.5050430	7.93	
7272.00	67.590	354.770	6748.12	-294.73	-656.76	-1766.10	40.1455699	-104.5050604	10.53	
7367.00	78.900	355.880	6775.46	-204.54	-566.24	-1773.48	40.1458186	-104.5050831	11.96	
7461.00	87.900	357.840	6786.26	-112.24	-473.10	-1778.57	40.1460744	-104.5050976	9.80	
7503.98†	88.751	357.749	6787.51	-69.83	-430.17	-1780.22	40.1461922	-104.5051018	1.99	Cross Hardline (200'FSL & 1168'FWL, SEC.12)
7556.00	89.780	357.640	6788.18	-18.47	-378.20	-1782.32	40.1463350	-104.5051072	1.99	
7651.00	90.000	358.760	6788.36	75.20	-283.25	-1785.30	40.1465957	-104.5051141	1.20	
7745.00	89.780	357.670	6788.54	167.88	-189.30	-1788.23	40.1468537	-104.5051208	1.18	
7840.00	90.000	358.460	6788.73	261.59	-94.35	-1791.44	40.1471144	-104.5051284	0.86	
7935.00	89.910	358.870	6788.80	355.12	0.62	-1793.65	40.1473751	-104.5051325	0.44	
8029.00	89.970	358.700	6788.90	447.64	94.60	-1795.64	40.1476331	-104.5051359	0.19	
8124.00	90.250	359.250	6788.72	541.09	189.59	-1797.34	40.1478939	-104.5051382	0.65	
8218.00	90.060	0.710	6788.46	633.24	283.58	-1797.37	40.1481519	-104.5051345	1.57	
8313.00	90.310	0.600	6788.16	726.14	378.58	-1796.29	40.1484126	-104.5051268	0.29	
8408.00	90.220	357.560	6787.72	819.55	473.55	-1797.81	40.1486734	-104.5051284	3.20	

REFERENCE WELLPATH IDENTIFICATION			
Operator	NOBLE ENERGY, INC	Well	Guttersen Y12-773
Field	WELD COUNTY (NOBLE NAD 83 GRID)	API/Legal	
Facility	SEC.12-T02N-R64W	Wellbore	Guttersen Y12-773 AWB
Slot	SLOT#02 Guttersen Y12-773 (610'FSL & 2316'FEL,SEC.12)		

WELLPATH DATA (186 stations)										
MD [ft]	Inclination [°]	Azimuth [°]	TVD [ft]	Vert Sect [ft]	North [ft]	East [ft]	Latitude	Longitude	DLS [°/100ft]	Comments
8502.00	90.120	357.780	6787.44	912.37	567.47	-1801.64	40.1489313	-104.5051383	0.26	
8597.00	89.690	357.410	6787.59	1006.20	662.39	-1805.62	40.1491919	-104.5051488	0.60	
8692.00	89.970	357.840	6787.88	1100.02	757.31	-1809.56	40.1494526	-104.5051591	0.54	
8786.00	90.030	357.860	6787.88	1192.80	851.24	-1813.08	40.1497105	-104.5051679	0.07	
8881.00	90.800	358.020	6787.19	1286.54	946.18	-1816.50	40.1499712	-104.5051763	0.83	
8975.00	90.060	358.070	6786.48	1379.26	1040.12	-1819.71	40.1502292	-104.5051840	0.79	
9070.00	90.030	358.720	6786.41	1472.88	1135.08	-1822.37	40.1504899	-104.5051897	0.68	
9165.00	90.150	359.020	6786.26	1566.36	1230.06	-1824.24	40.1507507	-104.5051926	0.34	
9258.00	89.970	358.810	6786.16	1657.85	1323.05	-1826.00	40.1510060	-104.5051952	0.30	
9353.00	89.850	358.780	6786.31	1751.35	1418.02	-1828.00	40.1512667	-104.5051985	0.13	
9447.00	89.720	359.120	6786.66	1843.82	1512.01	-1829.72	40.1515248	-104.5052009	0.39	
9542.00	89.970	359.150	6786.92	1937.22	1607.00	-1831.16	40.1517855	-104.5052022	0.27	
9636.00	89.910	359.060	6787.02	2029.64	1700.99	-1832.62	40.1520436	-104.5052037	0.12	
9731.00	90.000	359.040	6787.09	2123.07	1795.97	-1834.20	40.1523043	-104.5052055	0.10	
9826.00	90.220	359.080	6786.91	2216.49	1890.96	-1835.76	40.1525651	-104.5052073	0.24	
9920.00	89.910	358.640	6786.80	2308.99	1984.94	-1837.63	40.1528231	-104.5052102	0.57	
10015.00	89.780	358.980	6787.06	2402.48	2079.92	-1839.60	40.1530839	-104.5052135	0.38	
10109.00	89.940	358.860	6787.29	2494.96	2173.90	-1841.37	40.1533419	-104.5052160	0.21	
10204.00	90.000	358.790	6787.34	2588.45	2268.88	-1843.32	40.1536027	-104.5052192	0.10	
10298.00	89.750	358.600	6787.55	2681.00	2362.86	-1845.46	40.1538607	-104.5052231	0.33	
10393.00	89.910	358.890	6787.83	2774.51	2457.83	-1847.54	40.1541214	-104.5052267	0.35	
10488.00	90.180	359.180	6787.75	2867.94	2552.82	-1849.14	40.1543822	-104.5052286	0.42	
10582.00	90.180	359.180	6787.46	2960.34	2646.81	-1850.49	40.1546403	-104.5052296	0.00	
10677.00	90.310	359.220	6787.05	3053.72	2741.80	-1851.81	40.1549010	-104.5052306	0.14	
10772.00	90.060	359.320	6786.75	3147.08	2836.79	-1853.02	40.1551618	-104.5052311	0.28	
10866.00	89.780	359.190	6786.88	3239.46	2930.78	-1854.25	40.1554198	-104.5052317	0.33	
10961.00	89.780	358.970	6787.24	3332.87	3025.77	-1855.77	40.1556806	-104.5052333	0.23	
11056.00	90.310	359.120	6787.17	3426.30	3120.76	-1857.36	40.1559414	-104.5052352	0.58	
11150.00	89.940	359.130	6786.96	3518.72	3214.75	-1858.79	40.1561994	-104.5052366	0.39	
11245.00	90.370	358.930	6786.70	3612.14	3309.73	-1860.40	40.1564602	-104.5052385	0.50	
11340.00	90.250	359.160	6786.19	3705.57	3404.72	-1861.98	40.1567209	-104.5052404	0.27	
11434.00	90.310	359.050	6785.73	3797.99	3498.70	-1863.45	40.1569790	-104.5052418	0.13	
11529.00	90.150	359.500	6785.35	3891.35	3593.70	-1864.65	40.1572397	-104.5052423	0.50	
11624.00	89.970	358.880	6785.25	3984.73	3688.69	-1866.00	40.1575005	-104.5052433	0.68	
11718.00	89.910	358.780	6785.35	4077.24	3782.67	-1867.91	40.1577585	-104.5052464	0.12	
11813.00	89.450	358.900	6785.88	4170.72	3877.64	-1869.84	40.1580193	-104.5052495	0.50	
11908.00	90.180	359.130	6786.19	4264.15	3972.63	-1871.47	40.1582801	-104.5052515	0.81	
12002.00	90.120	359.190	6785.94	4356.56	4066.62	-1872.85	40.1585381	-104.5052527	0.09	
12097.00	90.990	359.010	6785.02	4449.97	4161.60	-1874.34	40.1587989	-104.5052542	0.94	
12192.00	89.940	359.220	6784.25	4543.37	4256.59	-1875.81	40.1590596	-104.5052556	1.13	
12286.00	90.060	359.180	6784.25	4635.76	4350.58	-1877.12	40.1593176	-104.5052565	0.13	
12381.00	90.060	358.890	6784.15	4729.19	4445.56	-1878.72	40.1595784	-104.5052585	0.31	
12476.00	90.180	359.590	6783.95	4822.56	4540.55	-1879.98	40.1598392	-104.5052592	0.75	
12570.00	90.090	359.010	6783.73	4914.92	4634.55	-1881.13	40.1600972	-104.5052595	0.62	
12665.00	89.820	359.080	6783.80	5008.35	4729.53	-1882.71	40.1603580	-104.5052613	0.29	

REFERENCE WELLPATH IDENTIFICATION			
Operator	NOBLE ENERGY, INC	Well	Guttersen Y12-773
Field	WELD COUNTY (NOBLE NAD 83 GRID)	API/Legal	
Facility	SEC.12-T02N-R64W	Wellbore	Guttersen Y12-773 AWB
Slot	SLOT#02 Guttersen Y12-773 (610'FSL & 2316'FEL,SEC.12)		

WELLPATH DATA (186 stations)										
MD [ft]	Inclination [°]	Azimuth [°]	TVD [ft]	Vert Sect [ft]	North [ft]	East [ft]	Latitude	Longitude	DLS [°/100ft]	Comments
12760.00	90.060	358.970	6783.90	5101.78	4824.52	-1884.33	40.1606188	-104.5052633	0.28	
12854.00	89.850	359.220	6783.98	5194.21	4918.51	-1885.81	40.1608768	-104.5052649	0.35	
12949.00	90.150	359.140	6783.98	5287.59	5013.50	-1887.17	40.1611376	-104.5052659	0.33	
13043.00	89.140	357.640	6784.56	5380.22	5107.45	-1889.81	40.1613955	-104.5052716	1.92	
13138.00	90.000	357.060	6785.27	5474.11	5202.35	-1894.21	40.1616561	-104.5052835	1.09	
13233.00	90.250	0.610	6785.06	5567.58	5297.31	-1896.14	40.1619169	-104.5052866	3.75	
13327.00	90.180	359.190	6784.71	5659.76	5391.31	-1896.30	40.1621749	-104.5052834	1.51	
13422.00	90.180	359.440	6784.41	5753.10	5486.30	-1897.44	40.1624357	-104.5052837	0.26	
13517.00	90.550	359.450	6783.81	5846.40	5581.30	-1898.36	40.1626964	-104.5052831	0.39	
13611.00	91.320	359.620	6782.27	5938.68	5675.28	-1899.12	40.1629544	-104.5052821	0.84	
13706.00	89.690	359.320	6781.44	6031.97	5770.27	-1900.00	40.1632152	-104.5052814	1.74	
13800.00	89.410	359.220	6782.18	6124.34	5864.26	-1901.20	40.1634732	-104.5052819	0.32	
13895.00	88.830	358.090	6783.63	6217.87	5959.22	-1903.43	40.1637339	-104.5052861	1.34	
13990.00	89.350	357.860	6785.14	6311.59	6054.15	-1906.78	40.1639946	-104.5052943	0.60	
14084.00	89.480	359.050	6786.10	6404.20	6148.11	-1909.32	40.1642526	-104.5052996	1.27	
14179.00	89.320	358.670	6787.10	6497.67	6243.08	-1911.21	40.1645133	-104.5053025	0.43	
14273.00	89.910	359.080	6787.73	6590.16	6337.06	-1913.05	40.1647713	-104.5053054	0.76	
14368.00	90.250	358.980	6787.60	6683.59	6432.05	-1914.66	40.1650321	-104.5053073	0.37	
14463.00	90.430	359.030	6787.03	6777.03	6527.03	-1916.31	40.1652929	-104.5053094	0.20	
14557.00	90.220	359.360	6786.50	6869.42	6621.02	-1917.63	40.1655509	-104.5053104	0.42	
14652.00	89.910	359.010	6786.39	6962.81	6716.01	-1918.98	40.1658117	-104.5053114	0.49	
14746.00	89.720	358.890	6786.70	7055.28	6809.99	-1920.70	40.1660697	-104.5053138	0.24	
14841.00	89.820	358.660	6787.08	7148.78	6904.97	-1922.74	40.1663305	-104.5053172	0.26	
14936.00	89.850	358.860	6787.35	7242.29	6999.95	-1924.79	40.1665912	-104.5053208	0.21	
15030.00	89.940	359.050	6787.52	7334.76	7093.93	-1926.51	40.1668492	-104.5053231	0.22	
15125.00	89.880	358.990	6787.67	7428.20	7188.92	-1928.13	40.1671100	-104.5053251	0.09	
15220.00	89.880	359.190	6787.87	7521.61	7283.91	-1929.64	40.1673708	-104.5053267	0.21	
15314.00	89.630	358.660	6788.27	7614.08	7377.89	-1931.40	40.1676288	-104.5053293	0.62	
15504.00	89.940	359.050	6788.99	7801.05	7567.85	-1935.20	40.1681503	-104.5053352	0.26	
15598.00	89.850	358.950	6789.16	7893.50	7661.83	-1936.84	40.1684084	-104.5053373	0.14	
15693.00	89.630	358.780	6789.59	7986.98	7756.82	-1938.72	40.1686691	-104.5053402	0.29	
15787.00	89.970	359.180	6789.92	8079.44	7850.80	-1940.40	40.1689271	-104.5053424	0.56	
15882.00	89.780	358.930	6790.12	8172.87	7945.79	-1941.96	40.1691879	-104.5053442	0.33	
15977.00	89.570	357.340	6790.66	8266.55	8040.73	-1945.05	40.1694486	-104.5053515	1.69	
16072.00	89.690	356.260	6791.28	8360.57	8135.58	-1950.36	40.1697091	-104.5053667	1.14	
16166.00	89.780	356.660	6791.71	8453.69	8229.40	-1956.16	40.1699668	-104.5053837	0.44	
16261.00	89.690	357.820	6792.15	8547.61	8324.29	-1960.73	40.1702274	-104.5053962	1.22	
16356.00	90.370	359.180	6792.10	8641.19	8419.25	-1963.22	40.1704882	-104.5054013	1.60	
16450.00	90.220	359.090	6791.62	8733.61	8513.24	-1964.64	40.1707462	-104.5054026	0.19	
16545.00	90.310	359.110	6791.18	8827.01	8608.23	-1966.13	40.1710069	-104.5054041	0.10	
16640.00	90.400	1.720	6790.59	8919.99	8703.21	-1965.44	40.1712677	-104.5053979	2.75	
16734.00	90.090	359.540	6790.19	9011.92	8797.20	-1964.41	40.1715256	-104.5053904	2.34	
16829.00	89.600	352.130	6790.44	9106.10	8891.88	-1971.31	40.1717857	-104.5054113	7.82	
16924.00	89.970	354.760	6790.80	9200.75	8986.25	-1982.15	40.1720451	-104.5054463	2.80	
17113.00	90.090	359.940	6790.70	9387.49	9174.99	-1990.89	40.1725634	-104.5054700	2.74	

REFERENCE WELLPATH IDENTIFICATION			
Operator	NOBLE ENERGY, INC	Well	Guttersen Y12-773
Field	WELD COUNTY (NOBLE NAD 83 GRID)	API/Legal	
Facility	SEC.12-T02N-R64W	Wellbore	Guttersen Y12-773 AWB
Slot	SLOT#02 Guttersen Y12-773 (610'FSL & 2316'FEL,SEC.12)		

WELLPATH DATA (186 stations) † = interpolated, ‡ = extrapolated station										
MD [ft]	Inclination [°]	Azimuth [°]	TVD [ft]	Vert Sect [ft]	North [ft]	East [ft]	Latitude	Longitude	DLS [°/100ft]	Comments
17208.00	89.910	359.030	6790.70	9480.78	9269.98	-1991.74	40.1728241	-104.5054692	0.98	
17302.00	89.940	357.210	6790.83	9573.48	9363.93	-1994.82	40.1730821	-104.5054765	1.94	
17397.00	90.400	0.180	6790.54	9667.00	9458.89	-1996.99	40.1733428	-104.5054804	3.16	
17492.00	90.090	0.170	6790.14	9760.06	9553.89	-1996.70	40.1736036	-104.5054755	0.33	
17648.00	90.250	0.170	6789.67	9912.89	9709.89	-1996.23	40.1740318	-104.5054676	0.10	Last BH MWD Survey (227'FNL & 1095'FWL, SEC.01)
17673.00‡	90.250	0.170	6789.57	9937.39	9734.89	-1996.16	40.1741004	-104.5054664	0.00	Projection to Bit (202'FNL & 1095'FWL, SEC.01)

TARGETS									
Name	TVD [ft]	North [ft]	East [ft]	Grid East [US ft]	Grid North [US ft]	Latitude	Longitude	Shape	
DP 455 Sec.01-T2N-R64W	-3.00	-0.25	-22.36	3279878.76	1298091.40	40.1473180	-104.4987970	polygon	
	2D Polygon: dimensions not calculated								
DP 455 Sec.12-T2N-R64W	-3.00	-0.25	-22.36	3279878.76	1298091.40	40.1473180	-104.4987970	polygon	
	2D Polygon: dimensions not calculated								
Guttersen Y12-773 BHL (200'FNL & 1128'FWL,SEC.01)	6788.00	9736.65	-1963.16	3277938.05	1307827.88	40.1741042	-104.5053482	point	
Guttersen Y12-773 BPZ (200'FNL & 1128'FWL,SEC.01)	6788.00	9736.65	-1963.16	3277938.05	1307827.88	40.1741042	-104.5053482	point	
Guttersen Y12-773 LP (200'FSL & 1134'FWL,SEC.12)	6788.00	-430.17	-1814.28	3278086.92	1297661.50	40.1461933	-104.5052236	point	
DP 455 West Hardline (200'FNL/FSL&300'FEL/FWL)	6849.00	0.65	90.02	3279991.13	1298092.31	40.1473170	-104.4983950	polygon	
	2D Polygon: dimensions not calculated								

WELLPATH COMPOSITION - Ref Wellbore: Guttersen Y12-773 AWB Ref Wellpath: Guttersen Y12-773 AWP					
Start MD [ft]	End MD [ft]	Positional Uncertainty Model	Log Name/Comment	Wellbore	Survey Date
30.00	1998.00	OWSG MWD rev2 - Standard	13.5" Surface OWSG MWD rev2 - Standard	Guttersen Y12-773 AWB	6/12/2024
1998.00	17673.00	OWSG MWD rev2 (MS+IFR1)	8.5" Monobore - OWSG MWD rev2 (MS+IFR1)	Guttersen Y12-773 AWB	6/12/2024

REFERENCE WELLPATH IDENTIFICATION			
Operator	NOBLE ENERGY, INC	Well	Guttersen Y12-773
Field	WELD COUNTY (NOBLE NAD 83 GRID)	API/Legal	
Facility	SEC.12-T02N-R64W	Wellbore	Guttersen Y12-773 AWB
Slot	SLOT#02 Guttersen Y12-773 (610'FSL & 2316'FEL,SEC.12)		

WELLPATH COMMENTS				
MD [ft]	Inclination [°]	Azimuth [°]	TVD [ft]	Comment
2162.00	20.770	231.500	2099.98	First BH MWD Survey
7503.98	88.751	357.749	6787.51	Cross Hardline (200'FSL & 1168'FWL, SEC.12)
17648.00	90.250	0.170	6789.67	Last BH MWD Survey (227'FNL & 1095'FWL, SEC.01)
17673.00	90.250	0.170	6789.57	Projection to Bit (202'FNL & 1095'FWL, SEC.01)