

# NOBLE ENERGY, INC

Location: COLORADO Slot: SLOT#03 Guttersen Y12-763 (610'FSL & 2293'FEL,SEC.12)  
 Field: WELD COUNTY (NOBLE NAD 83 GRID) Well: Guttersen Y12-763  
 Facility: SEC.12-T02N-R64W Wellbore: Guttersen Y12-763 PWB

Plot reference wellpath is Guttersen Y12-763 (REV-C.0) PWP  
 True vertical depths are referenced to RIG (4864'GL+30'KB@4894'RKB) (RKB)  
 Reference wellpath measured depths are referenced to RIG (4864'GL+30'KB@4894'RKB) (RKB)  
 RIG (4864'GL+30'KB@4894'RKB) (RKB) to Mean Sea Level: 4894 feet  
 Mean Sea Level to Ground level (At Slot: SLOT#03 Guttersen Y12-763 (610'FSL & 2293'FEL,SEC.12)): 0 feet  
 Offset wellpath MDs are referenced to each path's default MD datum

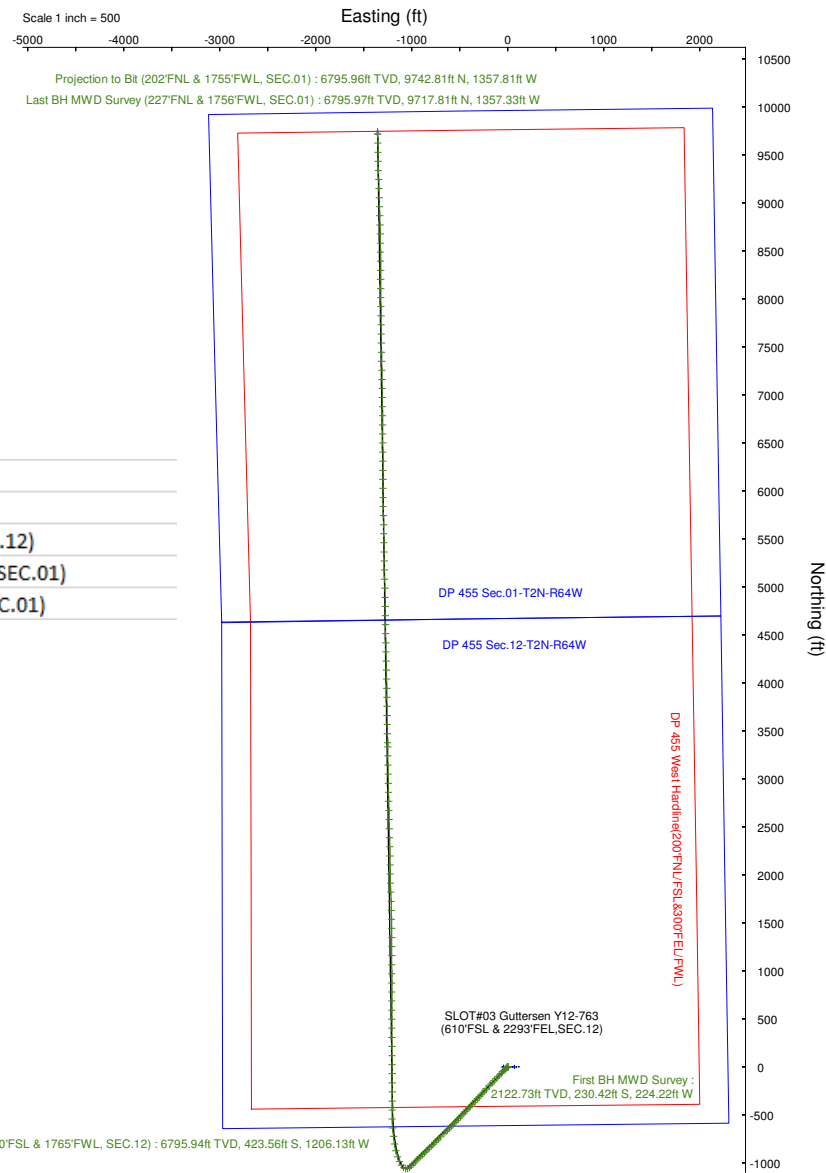
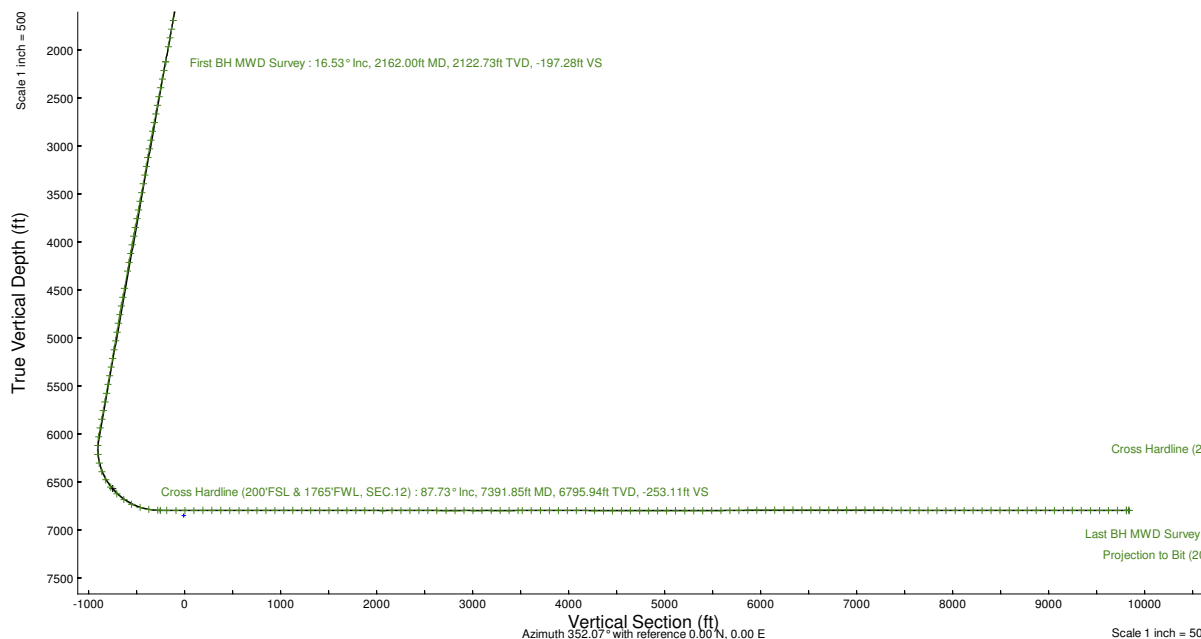
Grid System: NAD83 / Lambert Colorado SP, Northern Zone (501), US feet  
 North Reference: Grid north  
 Scale: True distance  
 Coordinates are in feet referenced to Slot  
 Depths are in feet  
 Created by: robiale01 on 2024-06-13; Database: WA\_Denver

## Location Information

Facility Name		Grid East (US ft)	Grid North (US ft)	Latitude	Longitude	
SEC.12-T02N-R64W		3279678.757	1298091.404	40°08'50.3448"N	104°29'55.6692"W	
Slot	Local N (ft)	Local E (ft)	Grid East (US ft)	Grid North (US ft)	Latitude	Longitude
SLOT#03 Guttersen Y12-763 (610'FSL & 2293'FEL,SEC.12)	0.51	45.01	3279923.762	1298091.913	40°08'50.3448"N	104°29'55.0896"W
RIG (4864'GL+30'KB@4894'RKB) (RKB) to Ground level (At Slot: SLOT#03 Guttersen Y12-763 (610'FSL & 2293'FEL,SEC.12))				4894ft		
Mean Sea Level to Ground level (At Slot: SLOT#03 Guttersen Y12-763 (610'FSL & 2293'FEL,SEC.12))				0ft		
RIG (4864'GL+30'KB@4894'RKB) (RKB) to Mean Sea Level				4894ft		



MD (ft)	INC (deg)	AZ (deg)	TVD (ft)	Local N (ft)	Local E (ft)	Comment
2162	16.53	222.04	2122.73	-230.42	-224.22	First BH MWD Survey
7391.85	87.725	0.419	6795.94	-423.56	-1206.13	Cross Hardline (200'FSL & 1765'FWL, SEC.12)
17535	90.03	358.9	6795.97	9717.81	-1357.33	Last BH MWD Survey (227'FNL & 1756'FWL, SEC.01)
17560	90.03	358.9	6795.96	9742.81	-1357.81	Projection to Bit (202'FNL & 1755'FWL, SEC.01)



Last BH MWD Survey (227'FNL & 1756'FWL, SEC.01) : 90.03° Inc, 17535.00ft MD, 6795.97ft TVD, 9812.15ft VS  
 Projection to Bit (202'FNL & 1755'FWL, SEC.01) : 90.03° Inc, 17560.00ft MD, 6795.96ft TVD, 9836.97ft VS

REFERENCE WELLPATH IDENTIFICATION			
Operator	NOBLE ENERGY, INC	Well	Guttersen Y12-763
Field	WELD COUNTY (NOBLE NAD 83 GRID)	API/Legal	
Facility	SEC.12-T02N-R64W	Wellbore	Guttersen Y12-763 AWB
Slot	SLOT#03 Guttersen Y12-763 (610'FSL & 2293'FEL,SEC.12)		

REPORT SETUP INFORMATION			
Projection System	NAD83 / Lambert Colorado SP, Northern Zone (501), US feet	Software System	WellArchitect® 6.0
North Reference	Grid	User	Robiale01
Scale	0.999958	Report Generated	6/12/2024 at 3:28:18 PM
Convergence at slot	0.65° East	Database	WA_Denver

WELLPATH LOCATION						
	Local coordinates		Grid coordinates		Geographic coordinates	
	North[ft]	East[ft]	Easting[US ft]	Northing[US ft]	Latitude	Longitude
Slot Location	0.51	45.01	3279923.76	1298091.91	40.1473180°	-104.4986360°
Facility Reference Pt			3279878.76	1298091.40	40.1473180°	-104.4987970°
Field Reference Pt			3000000.00	4454105.15	48.7761986°	-105.5000000°

WELLPATH DATUM			
Calculation method	Minimum curvature	RIG (4864'GL+30'KB@4894'RKB) (RKB) to Facility Vertical Datum	4894.00ft
Horizontal Reference Pt	Slot	RIG (4864'GL+30'KB@4894'RKB) (RKB) to Mean Sea Level	4894.00ft
Vertical Reference Pt	RIG (4864'GL+30'KB@4894'RKB) (RKB)	RIG (4864'GL+30'KB@4894'RKB) (RKB) to Ground Level at Slot (SLOT#03 Guttersen Y12-763 (610'FSL & 2293'FEL,SEC.12))	4894.00ft
MD Reference Pt	RIG (4864'GL+30'KB@4894'RKB) (RKB)	Section Origin	N 0.00, E 0.00 ft
Field Vertical Reference	Mean Sea Level	Section Azimuth	352.07°

REFERENCE WELLPATH IDENTIFICATION			
Operator	NOBLE ENERGY, INC	Well	Guttersen Y12-763
Field	WELD COUNTY (NOBLE NAD 83 GRID)	API/Legal	
Facility	SEC.12-T02N-R64W	Wellbore	Guttersen Y12-763 AWB
Slot	SLOT#03 Guttersen Y12-763 (610'FSL & 2293'FEL,SEC.12)		

WELLPATH DATA (187 stations) † = interpolated, ‡ = extrapolated station										
MD [ft]	Inclination [°]	Azimuth [°]	TVD [ft]	Vert Sect [ft]	North [ft]	East [ft]	Latitude	Longitude	DLS [°/100ft]	Comments
0.00†	0.000	285.940	0.00	0.00	0.00	0.00	40.1473180	-104.4986360	0.00	
30.00	0.000	285.940	30.00	0.00	0.00	0.00	40.1473180	-104.4986360	0.00	
203.00	0.260	285.940	203.00	0.16	0.11	-0.38	40.1473183	-104.4986373	0.15	
294.00	0.440	270.120	294.00	0.29	0.17	-0.93	40.1473185	-104.4986393	0.22	
389.00	0.260	292.270	389.00	0.45	0.25	-1.49	40.1473187	-104.4986413	0.23	
484.00	0.530	286.120	483.99	0.74	0.45	-2.11	40.1473193	-104.4986435	0.29	
578.00	0.620	307.210	577.99	1.28	0.88	-2.93	40.1473205	-104.4986465	0.24	
673.00	1.850	238.310	672.97	1.02	0.38	-4.65	40.1473192	-104.4986526	1.82	
767.00	3.690	222.490	766.86	-1.52	-2.64	-7.98	40.1473110	-104.4986647	2.10	
862.00	5.540	221.610	861.54	-6.44	-8.33	-13.09	40.1472956	-104.4986832	1.95	
957.00	7.380	221.780	955.94	-13.36	-16.31	-20.20	40.1472739	-104.4987089	1.94	
1051.00	9.150	225.830	1048.96	-21.69	-26.02	-29.59	40.1472475	-104.4987429	1.98	
1146.00	10.550	227.230	1142.55	-31.12	-37.19	-41.39	40.1472172	-104.4987855	1.49	
1241.00	12.400	223.540	1235.65	-42.44	-50.49	-54.80	40.1471811	-104.4988341	2.09	
1335.00	13.980	224.770	1327.17	-55.61	-65.86	-69.75	40.1471394	-104.4988882	1.71	
1430.00	15.740	224.770	1418.99	-70.37	-83.16	-86.91	40.1470924	-104.4989502	1.85	
1525.00	15.920	224.420	1510.39	-86.14	-101.61	-105.10	40.1470423	-104.4990160	0.21	
1619.00	16.180	223.370	1600.72	-102.21	-120.34	-123.12	40.1469915	-104.4990812	0.41	
1714.00	16.180	224.070	1691.96	-118.63	-139.47	-141.42	40.1469395	-104.4991475	0.21	
1809.00	16.360	223.190	1783.16	-135.18	-158.74	-159.78	40.1468872	-104.4992139	0.32	
1903.00	16.000	222.840	1873.43	-151.68	-177.89	-177.65	40.1468352	-104.4992786	0.40	
1998.00	15.120	220.730	1964.95	-168.15	-196.88	-194.64	40.1467836	-104.4993401	1.10	
2162.00	16.530	222.040	2122.73	-197.28	-230.42	-224.22	40.1466925	-104.4994473	0.89	First BH MWD Survey
2256.00	16.620	221.690	2212.83	-214.59	-250.39	-242.11	40.1466382	-104.4995121	0.14	
2350.00	16.560	221.370	2302.91	-232.04	-270.48	-259.91	40.1465836	-104.4995766	0.12	
2445.00	16.770	223.850	2393.92	-249.34	-290.52	-278.35	40.1465292	-104.4996433	0.78	
2540.00	16.510	223.690	2484.94	-266.20	-310.17	-297.17	40.1464758	-104.4997114	0.28	
2634.00	16.570	223.650	2575.06	-282.83	-329.52	-315.65	40.1464233	-104.4997783	0.06	
2729.00	16.560	223.720	2666.11	-299.64	-349.11	-334.36	40.1463701	-104.4998460	0.02	
2824.00	16.480	223.430	2757.19	-316.46	-368.68	-352.98	40.1463170	-104.4999134	0.12	
2918.00	16.600	221.300	2847.30	-333.55	-388.45	-371.00	40.1462633	-104.4999787	0.66	
3013.00	15.540	223.330	2938.59	-350.38	-407.90	-388.69	40.1462104	-104.5000427	1.26	
3107.00	15.600	224.300	3029.14	-366.00	-426.11	-406.16	40.1461610	-104.5001060	0.28	
3202.00	16.570	224.100	3120.42	-382.16	-444.98	-424.51	40.1461098	-104.5001723	1.02	
3297.00	15.320	222.740	3211.76	-398.45	-463.93	-442.46	40.1460583	-104.5002373	1.37	
3392.00	14.940	223.770	3303.47	-413.99	-481.99	-459.44	40.1460093	-104.5002988	0.49	
3486.00	15.970	223.340	3394.07	-429.59	-500.14	-476.70	40.1459600	-104.5003612	1.10	
3581.00	16.420	223.450	3485.30	-446.15	-519.39	-494.91	40.1459077	-104.5004271	0.47	
3676.00	16.530	223.470	3576.40	-462.96	-538.95	-513.44	40.1458546	-104.5004942	0.12	
3770.00	16.530	223.540	3666.51	-479.63	-558.35	-531.85	40.1458019	-104.5005608	0.02	
3865.00	16.510	224.140	3757.59	-496.35	-577.83	-550.56	40.1457490	-104.5006285	0.18	
3960.00	16.690	223.240	3848.63	-513.20	-597.46	-569.31	40.1456957	-104.5006964	0.33	
4055.00	16.630	224.870	3939.65	-529.97	-617.03	-588.24	40.1456426	-104.5007649	0.50	
4149.00	16.530	225.920	4029.74	-545.99	-635.86	-607.34	40.1455915	-104.5008340	0.34	
4244.00	16.690	225.730	4120.77	-562.05	-654.79	-626.81	40.1455401	-104.5009044	0.18	

REFERENCE WELLPATH IDENTIFICATION			
Operator	NOBLE ENERGY, INC	Well	Guttersen Y12-763
Field	WELD COUNTY (NOBLE NAD 83 GRID)	API/Legal	
Facility	SEC.12-T02N-R64W	Wellbore	Guttersen Y12-763 AWB
Slot	SLOT#03 Guttersen Y12-763 (610'FSL & 2293'FEL,SEC.12)		

WELLPATH DATA (187 stations) † = interpolated, ‡ = extrapolated station										
MD [ft]	Inclination [°]	Azimuth [°]	TVD [ft]	Vert Sect [ft]	North [ft]	East [ft]	Latitude	Longitude	DLS [°/100ft]	Comments
4339.00	16.590	225.330	4211.80	-578.25	-673.85	-646.23	40.1454884	-104.5009746	0.16	
4434.00	16.460	225.300	4302.87	-594.42	-692.85	-665.44	40.1454368	-104.5010441	0.14	
4623.00	16.490	225.710	4484.11	-626.35	-730.41	-703.67	40.1453349	-104.5011823	0.06	
4718.00	16.540	225.650	4575.19	-642.37	-749.28	-722.99	40.1452837	-104.5012522	0.06	
4812.00	16.550	225.570	4665.30	-658.28	-768.00	-742.12	40.1452329	-104.5013214	0.03	
4907.00	16.470	225.540	4756.38	-674.34	-786.91	-761.40	40.1451816	-104.5013911	0.08	
5002.00	14.160	224.560	4848.00	-689.43	-804.62	-779.16	40.1451336	-104.5014553	2.45	
5096.00	14.620	225.680	4939.06	-703.47	-821.10	-795.72	40.1450888	-104.5015152	0.57	
5191.00	16.600	225.720	5030.55	-718.63	-838.96	-814.01	40.1450404	-104.5015814	2.08	
5286.00	16.370	225.100	5121.64	-734.73	-857.88	-833.21	40.1449890	-104.5016508	0.30	
5380.00	14.680	225.930	5212.21	-749.72	-875.52	-851.15	40.1449412	-104.5017157	1.81	
5475.00	16.950	225.500	5303.61	-765.07	-893.60	-869.68	40.1448921	-104.5017827	2.39	
5569.00	16.680	225.650	5393.59	-781.24	-912.63	-889.10	40.1448405	-104.5018529	0.29	
5664.00	16.320	225.540	5484.68	-797.28	-931.51	-908.38	40.1447893	-104.5019226	0.38	
5759.00	16.640	225.410	5575.77	-813.35	-950.41	-927.59	40.1447380	-104.5019921	0.34	
5853.00	16.850	225.190	5665.79	-829.56	-969.46	-946.84	40.1446863	-104.5020617	0.23	
5948.00	16.810	225.540	5756.72	-846.00	-988.78	-966.41	40.1446338	-104.5021325	0.11	
6043.00	16.850	225.040	5847.65	-862.47	-1008.13	-985.96	40.1445813	-104.5022032	0.16	
6137.00	16.840	225.490	5937.62	-878.79	-1027.31	-1005.31	40.1445293	-104.5022732	0.14	
6232.00	16.930	225.910	6028.52	-895.15	-1046.58	-1025.06	40.1444770	-104.5023446	0.16	
6326.00	12.640	251.700	6119.48	-905.09	-1059.35	-1044.68	40.1444426	-104.5024153	8.25	
6421.00	13.790	283.340	6212.09	-902.85	-1060.00	-1065.60	40.1444414	-104.5024901	7.61	
6515.00	16.920	310.660	6302.84	-888.51	-1048.49	-1086.91	40.1444737	-104.5025659	8.29	
6610.00	23.170	325.390	6392.09	-861.40	-1024.06	-1108.04	40.1445414	-104.5026405	8.41	
6705.00	31.250	334.220	6476.54	-821.16	-986.41	-1129.42	40.1446454	-104.5027154	9.49	
6799.00	38.760	340.990	6553.51	-768.98	-936.54	-1149.65	40.1447829	-104.5027857	8.98	
6894.00	47.810	346.540	6622.62	-704.61	-874.05	-1167.57	40.1449550	-104.5028473	10.33	
6988.00	53.590	351.610	6682.16	-632.03	-802.67	-1181.21	40.1451513	-104.5028933	7.43	
7083.00	63.280	352.760	6731.83	-551.19	-722.57	-1192.16	40.1453715	-104.5029292	10.25	
7177.00	74.260	354.490	6765.82	-463.74	-635.62	-1201.83	40.1456105	-104.5029603	11.81	
7272.00	81.870	359.800	6785.46	-371.27	-542.89	-1206.39	40.1458652	-104.5029729	9.70	
7366.00	86.830	0.310	6794.72	-278.66	-449.38	-1206.30	40.1461218	-104.5029688	5.30	
7391.85†	87.725	0.419	6795.94	-253.11	-423.56	-1206.13	40.1461927	-104.5029672	3.49	Cross Hardline (200'FSL & 1765'FWL, SEC.12)
7461.00	90.120	0.710	6797.24	-184.74	-354.43	-1205.45	40.1463824	-104.5029619	3.49	
7556.00	89.780	0.410	6797.33	-90.78	-259.44	-1204.52	40.1466431	-104.5029548	0.48	
7650.00	89.780	359.450	6797.69	2.34	-165.44	-1204.64	40.1469012	-104.5029514	1.02	
7745.00	90.650	359.730	6797.33	96.52	-70.44	-1205.32	40.1471619	-104.5029500	0.96	
7840.00	90.000	359.560	6796.79	190.69	24.56	-1205.91	40.1474227	-104.5029483	0.71	
7934.00	89.850	359.430	6796.92	283.90	118.55	-1206.74	40.1476807	-104.5029475	0.21	
8029.00	89.750	359.490	6797.25	378.11	213.55	-1207.63	40.1479415	-104.5029469	0.12	
8123.00	89.940	359.510	6797.50	471.32	307.54	-1208.45	40.1481995	-104.5029460	0.20	
8218.00	89.850	359.420	6797.68	565.53	402.54	-1209.34	40.1484603	-104.5029454	0.13	
8313.00	90.060	0.140	6797.75	659.67	497.54	-1209.70	40.1487211	-104.5029429	0.79	
8407.00	90.060	0.050	6797.65	752.75	591.54	-1209.55	40.1489791	-104.5029385	0.10	
8502.00	90.090	0.160	6797.53	846.82	686.54	-1209.37	40.1492398	-104.5029341	0.12	

REFERENCE WELLPATH IDENTIFICATION			
Operator	NOBLE ENERGY, INC	Well	Guttersen Y12-763
Field	WELD COUNTY (NOBLE NAD 83 GRID)	API/Legal	
Facility	SEC.12-T02N-R64W	Wellbore	Guttersen Y12-763 AWB
Slot	SLOT#03 Guttersen Y12-763 (610'FSL & 2293'FEL,SEC.12)		

WELLPATH DATA (187 stations)										
MD [ft]	Inclination [°]	Azimuth [°]	TVD [ft]	Vert Sect [ft]	North [ft]	East [ft]	Latitude	Longitude	DLS [°/100ft]	Comments
8596.00	90.180	359.940	6797.31	939.91	780.54	-1209.29	40.1494979	-104.5029300	0.25	
8691.00	90.030	359.720	6797.13	1034.04	875.54	-1209.57	40.1497586	-104.5029272	0.28	
8786.00	90.030	359.960	6797.08	1128.17	970.53	-1209.84	40.1500194	-104.5029243	0.25	
8880.00	89.690	359.900	6797.31	1221.28	1064.53	-1209.95	40.1502774	-104.5029210	0.37	
8975.00	89.970	359.700	6797.59	1315.42	1159.53	-1210.28	40.1505382	-104.5029183	0.36	
9069.00	90.120	0.030	6797.52	1408.55	1253.53	-1210.51	40.1507962	-104.5029153	0.39	
9164.00	89.850	359.810	6797.54	1502.66	1348.53	-1210.64	40.1510570	-104.5029120	0.37	
9258.00	89.750	359.690	6797.87	1595.82	1442.53	-1211.05	40.1513150	-104.5029097	0.17	
9352.00	90.000	358.610	6798.08	1689.10	1536.52	-1212.44	40.1515730	-104.5029109	1.18	
9447.00	90.090	358.690	6798.00	1783.47	1631.49	-1214.68	40.1518338	-104.5029151	0.13	
9541.00	90.120	359.040	6797.83	1876.81	1725.47	-1216.54	40.1520918	-104.5029180	0.37	
9636.00	89.660	356.660	6798.01	1971.32	1820.40	-1220.11	40.1523525	-104.5029269	2.55	
9730.00	90.030	358.770	6798.27	2064.86	1914.32	-1223.85	40.1526104	-104.5029365	2.28	
9825.00	90.280	359.060	6798.01	2159.18	2009.30	-1225.65	40.1528711	-104.5029391	0.40	
9920.00	89.850	358.970	6797.90	2253.48	2104.29	-1227.29	40.1531319	-104.5029411	0.46	
10014.00	90.090	359.380	6797.95	2346.76	2198.28	-1228.64	40.1533899	-104.5029422	0.51	
10109.00	89.880	358.710	6797.98	2441.06	2293.26	-1230.22	40.1536507	-104.5029441	0.74	
10203.00	89.940	358.490	6798.12	2534.45	2387.24	-1232.52	40.1539087	-104.5029485	0.24	
10298.00	89.940	358.520	6798.22	2628.85	2482.20	-1235.00	40.1541695	-104.5029535	0.03	
10393.00	89.970	358.840	6798.30	2723.22	2577.18	-1237.19	40.1544302	-104.5029575	0.34	
10487.00	90.030	358.620	6798.30	2816.58	2671.15	-1239.27	40.1546882	-104.5029612	0.24	
10582.00	90.060	358.410	6798.22	2910.98	2766.12	-1241.73	40.1549490	-104.5029662	0.22	
10677.00	89.880	359.110	6798.27	3005.34	2861.10	-1243.79	40.1552097	-104.5029697	0.76	
10771.00	90.150	359.140	6798.25	3098.62	2955.09	-1245.22	40.1554678	-104.5029711	0.29	
10866.00	89.820	358.680	6798.27	3192.95	3050.07	-1247.03	40.1557285	-104.5029737	0.60	
10961.00	89.940	358.860	6798.47	3287.30	3145.05	-1249.07	40.1559893	-104.5029772	0.23	
11055.00	90.120	359.190	6798.42	3380.61	3239.03	-1250.67	40.1562473	-104.5029791	0.40	
11150.00	90.310	359.210	6798.07	3474.87	3334.02	-1252.00	40.1565081	-104.5029801	0.20	
11193.00	90.340	359.230	6797.82	3517.54	3377.02	-1252.58	40.1566261	-104.5029804	0.08	
11288.00	90.060	358.620	6797.49	3611.86	3472.00	-1254.36	40.1568869	-104.5029830	0.71	
11383.00	89.780	358.680	6797.62	3706.23	3566.98	-1256.60	40.1571477	-104.5029872	0.30	
11477.00	90.060	359.030	6797.76	3799.57	3660.96	-1258.48	40.1574057	-104.5029901	0.48	
11572.00	90.310	359.570	6797.45	3893.81	3755.95	-1259.64	40.1576665	-104.5029905	0.63	
11667.00	89.780	359.270	6797.37	3988.03	3850.94	-1260.60	40.1579272	-104.5029901	0.64	
11761.00	89.720	359.020	6797.78	4081.32	3944.93	-1262.01	40.1581853	-104.5029913	0.27	
11856.00	89.850	359.250	6798.14	4175.59	4039.92	-1263.44	40.1584460	-104.5029926	0.28	
11951.00	89.350	358.230	6798.80	4269.95	4134.89	-1265.53	40.1587068	-104.5029963	1.20	
12045.00	89.660	358.660	6799.62	4363.36	4228.86	-1268.08	40.1589648	-104.5030016	0.56	
12140.00	89.750	358.990	6800.11	4457.70	4323.83	-1270.03	40.1592255	-104.5030048	0.36	
12235.00	89.880	358.680	6800.41	4552.04	4418.81	-1271.96	40.1594863	-104.5030079	0.35	
12329.00	90.090	359.290	6800.44	4645.36	4512.80	-1273.62	40.1597443	-104.5030100	0.69	
12424.00	89.780	358.830	6800.54	4739.65	4607.78	-1275.18	40.1600051	-104.5030118	0.58	
12518.00	89.910	358.650	6800.80	4833.01	4701.76	-1277.25	40.1602631	-104.5030154	0.24	
12613.00	90.830	359.860	6800.19	4927.26	4796.75	-1278.48	40.1605239	-104.5030160	1.60	
12708.00	89.940	358.660	6799.55	5021.51	4891.74	-1279.71	40.1607846	-104.5030166	1.57	

REFERENCE WELLPATH IDENTIFICATION			
Operator	NOBLE ENERGY, INC	Well	Guttersen Y12-763
Field	WELD COUNTY (NOBLE NAD 83 GRID)	API/Legal	
Facility	SEC.12-T02N-R64W	Wellbore	Guttersen Y12-763 AWB
Slot	SLOT#03 Guttersen Y12-763 (610'FSL & 2293'FEL,SEC.12)		

WELLPATH DATA (187 stations)										
MD [ft]	Inclination [°]	Azimuth [°]	TVD [ft]	Vert Sect [ft]	North [ft]	East [ft]	Latitude	Longitude	DLS [°/100ft]	Comments
12802.00	89.940	358.500	6799.65	5114.90	4985.71	-1282.04	40.1610426	-104.5030211	0.17	
12897.00	89.940	358.500	6799.74	5209.31	5080.67	-1284.53	40.1613034	-104.5030262	0.00	
12992.00	90.180	358.760	6799.65	5303.68	5175.65	-1286.80	40.1615641	-104.5030305	0.37	
13086.00	90.090	358.940	6799.42	5397.03	5269.63	-1288.69	40.1618222	-104.5030335	0.21	
13181.00	90.220	358.890	6799.17	5491.35	5364.61	-1290.48	40.1620829	-104.5030361	0.15	
13276.00	90.520	358.850	6798.55	5585.68	5459.59	-1292.36	40.1623437	-104.5030390	0.32	
13370.00	90.770	359.130	6797.50	5678.99	5553.57	-1294.01	40.1626017	-104.5030411	0.40	
13465.00	91.170	359.090	6795.89	5773.26	5648.54	-1295.49	40.1628624	-104.5030426	0.42	
13559.00	90.180	358.700	6794.78	5866.58	5742.52	-1297.30	40.1631204	-104.5030453	1.13	
13654.00	90.090	359.020	6794.56	5960.92	5837.50	-1299.19	40.1633812	-104.5030482	0.35	
13748.00	90.310	359.300	6794.23	6054.20	5931.49	-1300.57	40.1636392	-104.5030494	0.38	
13843.00	90.310	0.250	6793.71	6148.34	6026.49	-1300.94	40.1639000	-104.5030469	1.00	
13938.00	90.430	359.810	6793.10	6242.42	6121.48	-1300.89	40.1641607	-104.5030429	0.48	
14032.00	89.970	359.190	6792.77	6335.63	6215.48	-1301.71	40.1644188	-104.5030420	0.82	
14127.00	89.910	0.030	6792.87	6429.81	6310.48	-1302.36	40.1646795	-104.5030405	0.89	
14222.00	90.120	359.440	6792.85	6523.96	6405.47	-1302.80	40.1649403	-104.5030383	0.66	
14316.00	90.000	359.670	6792.75	6617.16	6499.47	-1303.53	40.1651983	-104.5030371	0.28	
14411.00	90.060	359.190	6792.70	6711.37	6594.47	-1304.48	40.1654591	-104.5030367	0.51	
14505.00	89.820	359.710	6792.80	6804.60	6688.46	-1305.38	40.1657171	-104.5030361	0.61	
14600.00	90.370	359.650	6792.64	6898.76	6783.46	-1305.91	40.1659779	-104.5030342	0.58	
14695.00	89.660	359.230	6792.61	6992.97	6878.45	-1306.84	40.1662387	-104.5030337	0.87	
14789.00	89.750	359.380	6793.10	7086.22	6972.45	-1307.98	40.1664967	-104.5030340	0.19	
14884.00	89.420	358.500	6793.79	7180.54	7067.43	-1309.73	40.1667575	-104.5030365	0.99	
14978.00	89.630	359.360	6794.57	7273.86	7161.41	-1311.49	40.1670155	-104.5030390	0.94	
15073.00	89.660	358.950	6795.15	7368.13	7256.39	-1312.89	40.1672763	-104.5030402	0.43	
15168.00	89.720	359.200	6795.67	7462.42	7351.38	-1314.42	40.1675370	-104.5030418	0.27	
15262.00	89.720	358.860	6796.13	7555.73	7445.36	-1316.02	40.1677950	-104.5030437	0.36	
15357.00	89.600	358.840	6796.69	7650.06	7540.34	-1317.92	40.1680558	-104.5030467	0.13	
15452.00	89.690	358.990	6797.28	7744.38	7635.32	-1319.72	40.1683166	-104.5030493	0.18	
15546.00	89.940	359.870	6797.58	7837.61	7729.32	-1320.66	40.1685746	-104.5030489	0.97	
15641.00	90.000	359.300	6797.63	7931.79	7824.32	-1321.34	40.1688354	-104.5030476	0.60	
15736.00	89.940	358.950	6797.68	8026.07	7919.30	-1322.80	40.1690961	-104.5030489	0.37	
15830.00	90.250	359.850	6797.53	8119.30	8013.30	-1323.78	40.1693542	-104.5030487	1.01	
15925.00	89.880	359.110	6797.42	8213.51	8108.29	-1324.64	40.1696149	-104.5030479	0.87	
16020.00	90.060	0.090	6797.47	8307.69	8203.29	-1325.30	40.1698757	-104.5030465	1.05	
16114.00	90.650	359.740	6796.89	8400.81	8297.29	-1325.44	40.1701337	-104.5030432	0.73	
16209.00	90.180	359.810	6796.20	8494.94	8392.28	-1325.82	40.1703945	-104.5030407	0.50	
16304.00	90.000	359.450	6796.05	8589.12	8487.28	-1326.43	40.1706553	-104.5030391	0.42	
16398.00	90.030	359.650	6796.03	8682.32	8581.28	-1327.17	40.1709133	-104.5030379	0.22	
16493.00	89.910	358.710	6796.07	8776.59	8676.27	-1328.53	40.1711741	-104.5030390	1.00	
16588.00	89.910	357.010	6796.22	8871.10	8771.20	-1332.08	40.1714347	-104.5030479	1.79	
16683.00	89.970	358.970	6796.32	8965.59	8866.13	-1335.41	40.1716954	-104.5030560	2.06	
16777.00	89.750	358.630	6796.55	9058.94	8960.11	-1337.38	40.1719534	-104.5030592	0.43	
16872.00	89.720	357.570	6796.99	9153.41	9055.06	-1340.53	40.1722142	-104.5030667	1.12	
16966.00	90.090	358.730	6797.15	9246.88	9149.01	-1343.56	40.1724721	-104.5030738	1.30	

REFERENCE WELLPATH IDENTIFICATION			
Operator	NOBLE ENERGY, INC	Well	Guttersen Y12-763
Field	WELD COUNTY (NOBLE NAD 83 GRID)	API/Legal	
Facility	SEC.12-T02N-R64W	Wellbore	Guttersen Y12-763 AWB
Slot	SLOT#03 Guttersen Y12-763 (610'FSL & 2293'FEL,SEC.12)		

WELLPATH DATA (187 stations) † = interpolated, ‡ = extrapolated station										
MD [ft]	Inclination [°]	Azimuth [°]	TVD [ft]	Vert Sect [ft]	North [ft]	East [ft]	Latitude	Longitude	DLS [°/100ft]	Comments
17061.00	89.850	357.660	6797.20	9341.34	9243.96	-1346.55	40.1727328	-104.5030806	1.15	
17156.00	89.820	358.470	6797.47	9435.82	9338.90	-1349.76	40.1729935	-104.5030883	0.85	
17251.00	89.910	359.120	6797.70	9530.16	9433.88	-1351.76	40.1732543	-104.5030916	0.69	
17345.00	90.180	359.310	6797.62	9623.43	9527.87	-1353.05	40.1735123	-104.5030925	0.35	
17440.00	90.890	358.310	6796.73	9717.77	9622.85	-1355.02	40.1737731	-104.5030957	1.29	
17535.00	90.030	358.900	6795.97	9812.15	9717.81	-1357.33	40.1740338	-104.5031001	1.10	Last BH MWD Survey (227'FNL & 1756'FWL, SEC.01)
17560.00‡	90.030	358.900	6795.96	9836.97	9742.81	-1357.81	40.1741024	-104.5031009	0.00	Projection to Bit (202'FNL & 1755'FWL, SEC.01)

TARGETS									
Name	TVD [ft]	North [ft]	East [ft]	Grid East [US ft]	Grid North [US ft]	Latitude	Longitude	Shape	
DP 455 Sec.01-T2N-R64W	-2.00	-0.51	-45.01	3279878.76	1298091.40	40.1473180	-104.4987970	polygon	
	2D Polygon: dimensions not calculated								
DP 455 Sec.12-T2N-R64W	-2.00	-0.51	-45.01	3279878.76	1298091.40	40.1473180	-104.4987970	polygon	
	2D Polygon: dimensions not calculated								
Guttersen Y12-763 BHL (200'FNL & 1756'FWL,SEC.01)	6797.00	9744.34	-1357.32	3278566.50	1307835.83	40.1741066	-104.5030990	point	
Guttersen Y12-763 BPZ (200'FNL & 1756'FWL,SEC.01)	6797.00	9744.34	-1357.32	3278566.50	1307835.83	40.1741066	-104.5030990	point	
Guttersen Y12-763 LP (200'FSL & 1769'FWL,SEC.12)	6797.00	-423.51	-1202.50	3278721.32	1297668.42	40.1461927	-104.5029541	point	
DP 455 West Hardline (200'FNL/FSL&300'FEL/FWL)	6850.00	0.40	67.37	3279991.13	1298092.31	40.1473170	-104.4983950	polygon	
	2D Polygon: dimensions not calculated								

WELLPATH COMPOSITION - Ref Wellbore: Guttersen Y12-763 AWB Ref Wellpath: Guttersen Y12-763 AWP					
Start MD [ft]	End MD [ft]	Positional Uncertainty Model	Log Name/Comment	Wellbore	Survey Date
30.00	1998.00	OWSG MWD rev2 - Standard	13.5" Surface OWSG MWD rev2 - Standard	Guttersen Y12-763 AWB	6/12/2024
1998.00	17560.00	OWSG MWD rev2 (MS+IFR1)	8.5" Monobore - OWSG MWD rev2 (MS+IFR1)	Guttersen Y12-763 AWB	6/12/2024

REFERENCE WELLPATH IDENTIFICATION			
Operator	NOBLE ENERGY, INC	Well	Guttersen Y12-763
Field	WELD COUNTY (NOBLE NAD 83 GRID)	API/Legal	
Facility	SEC.12-T02N-R64W	Wellbore	Guttersen Y12-763 AWB
Slot	SLOT#03 Guttersen Y12-763 (610'FSL & 2293'FEL,SEC.12)		

WELLPATH COMMENTS				
MD [ft]	Inclination [°]	Azimuth [°]	TVD [ft]	Comment
2162.00	16.530	222.040	2122.73	First BH MWD Survey
7391.85	87.725	0.419	6795.94	Cross Hardline (200'FSL & 1765'FWL, SEC.12)
17535.00	90.030	358.900	6795.97	Last BH MWD Survey (227'FNL & 1756'FWL, SEC.01)
17560.00	90.030	358.900	6795.96	Projection to Bit (202'FNL & 1755'FWL, SEC.01)